

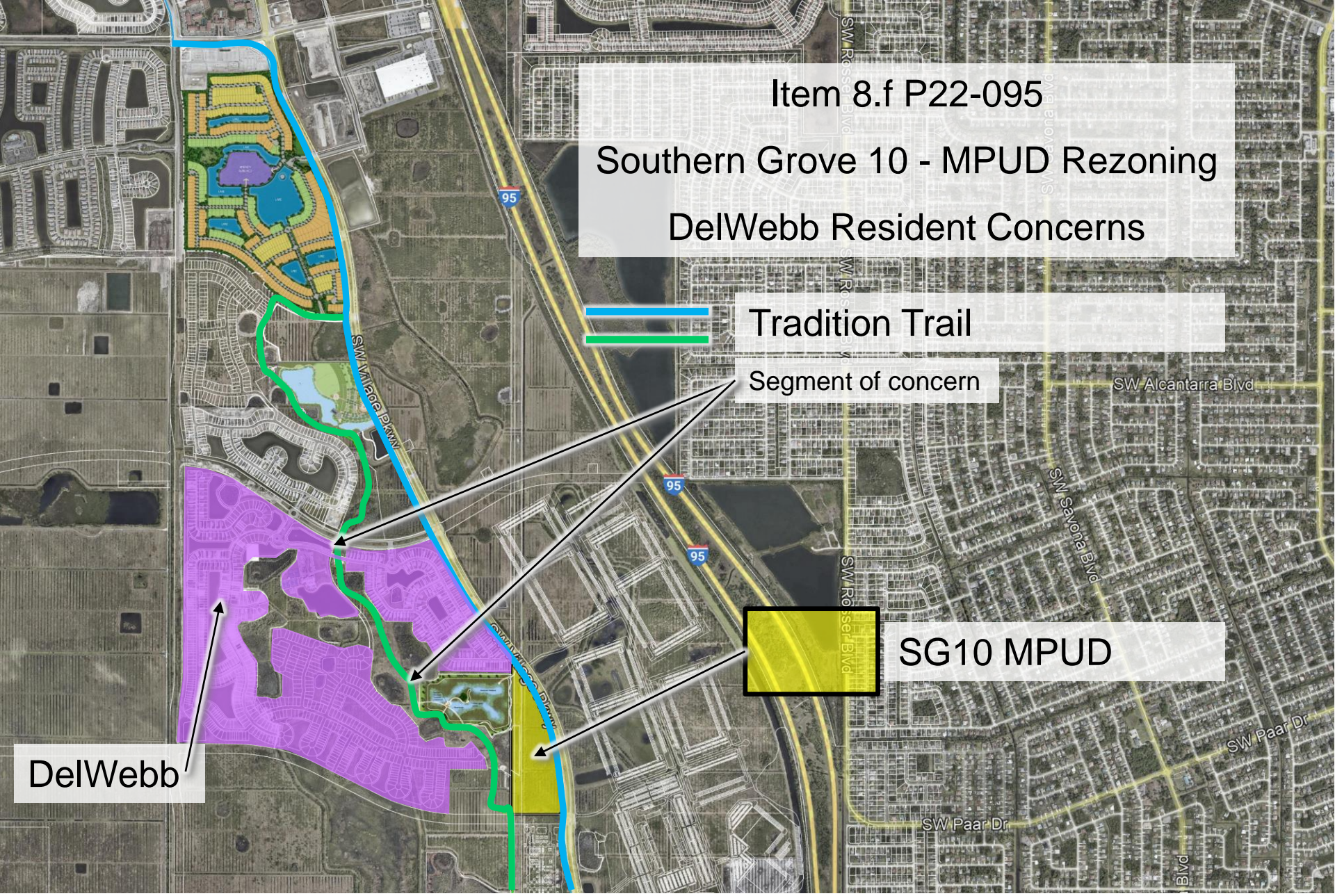
Item 8.f P22-095
Southern Grove 10 - MPUD Rezoning
DelWebb Resident Concerns

Tradition Trail

Segment of concern

SG10 MPUD

DelWebb





Tradition Regional Park



Talk in the Park



Stars and Stripes in the Park



SoGro in the Park



Tradition Town Center

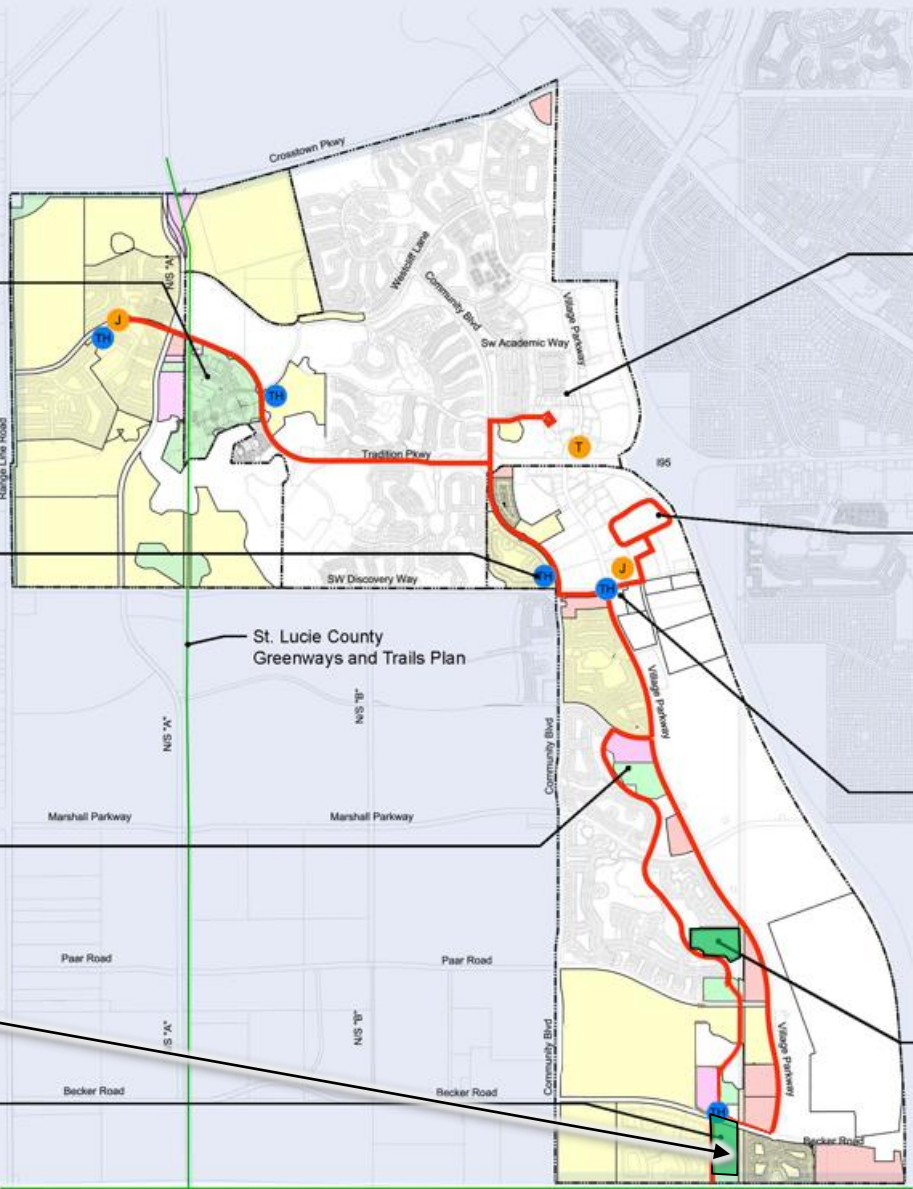
B-Lake



Heart in the Park



Walk in the Park



LEGEND

- Trail
- St. Lucie County Greenways and Trails Plan
- City Parks

- "Destinations"**
- Trailhead
 - Tradition "T" Digital Sign
 - Jaffe Iconic Art Statement Brand Identity
 - TIM Stop
 - Seating Area

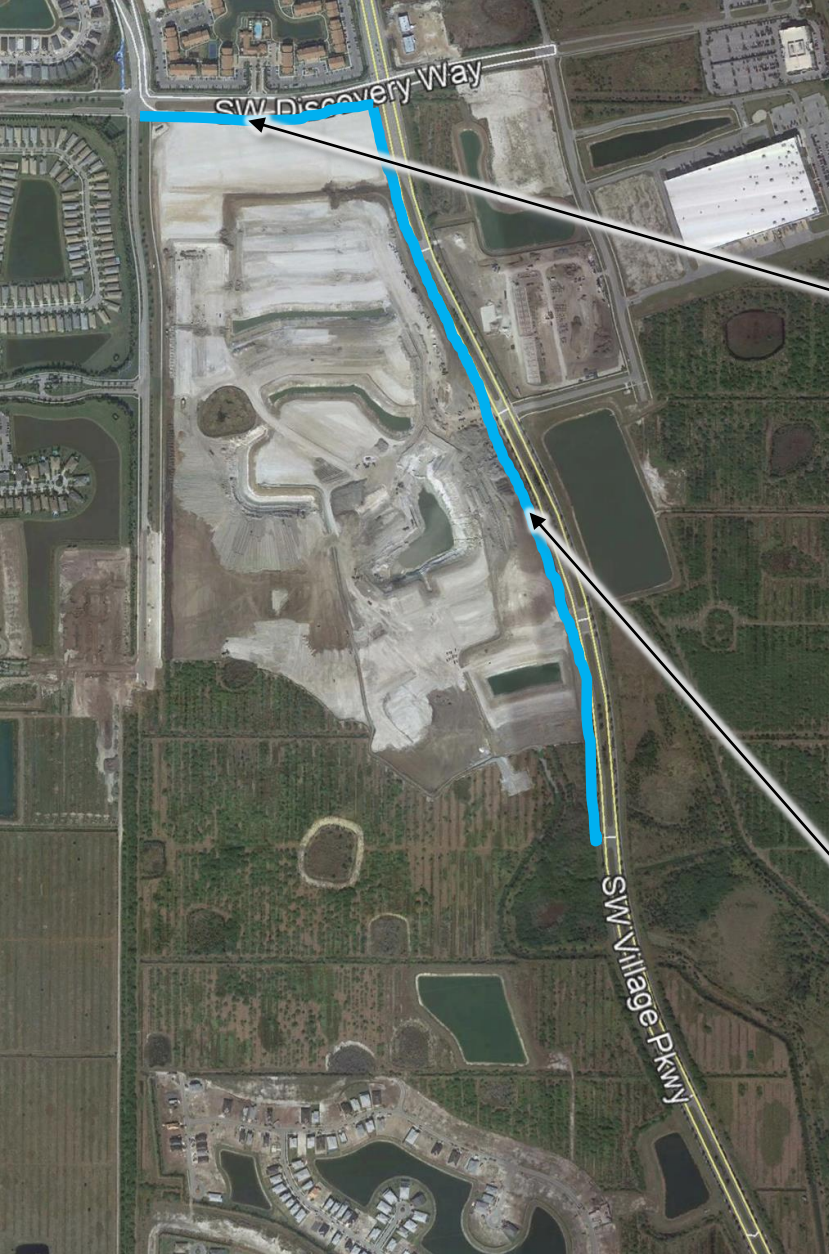


The T Trail

Tradition, City of Port St. Lucie
Experiences Map

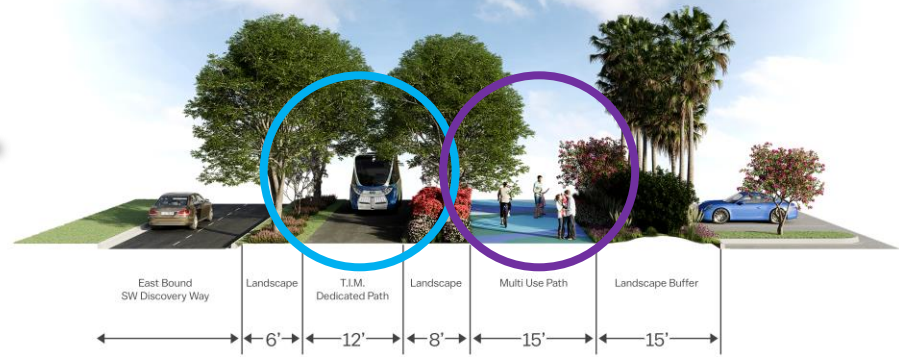


The 'T' Trail – Experiences Master Plan



Dedicated TIM Path

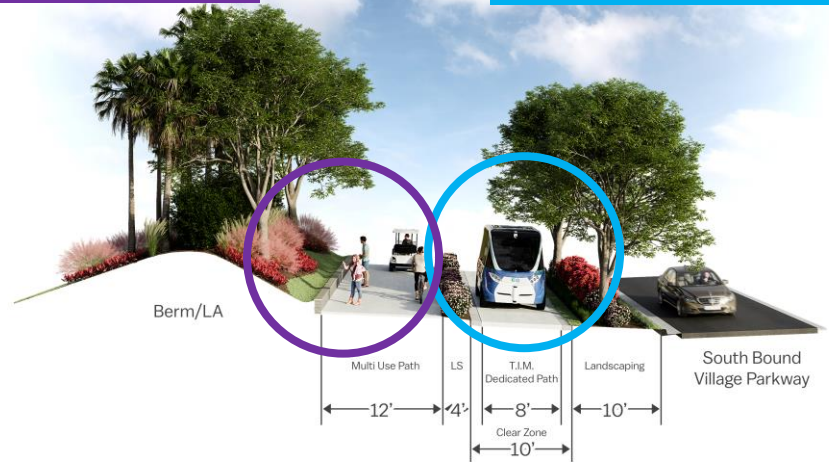
Multi Use Path



Tradition Trail Cross Section
SW DISCOVERY WAY EAST BOUND WEST OF SW VILLAGE PARKWAY

Multi Use Path

Dedicated TIM Path



Tradition Trail Cross Section
Village Parkway



Next Phase of TRAIL

Specific Points:

1. Initial meeting between Pulte, Mattamy and DWT Trail Group last fall with agreement to develop options for Trail within DWT;
2. Pulte and Mattamy are working towards setting a date to review with residents (30-45 days);
3. The Multi-Use (green line) of Tradition Trail is not tied to any aspect of this rezoning application;

Segment of concern

DelWebb

SG10 MPUD

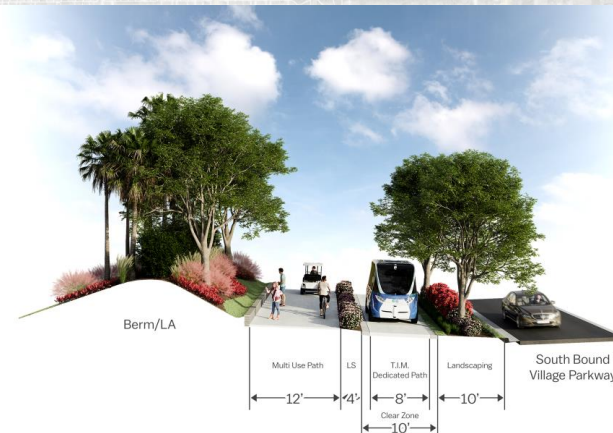
TRAIL – TIM and MU Path

TRAIL – MU Path

Specific Points:

1. All properties within Southern Grove have NCD Land Use and are required to rezone to MPUD;
2. MPUDs specifically west of Village Parkway have been required to acknowledge and provide for Tradition Trail;

TRAIL – TIM and MU Path



SG10 MPUD



TRADITION



SG10 MPUD Request