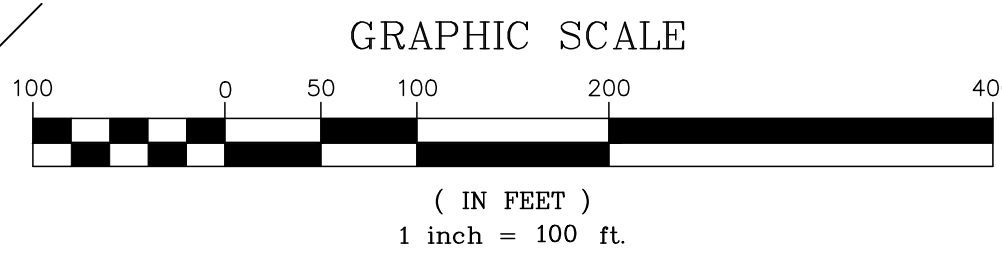
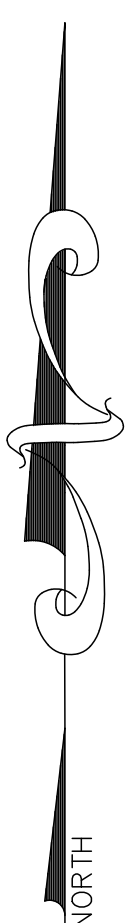
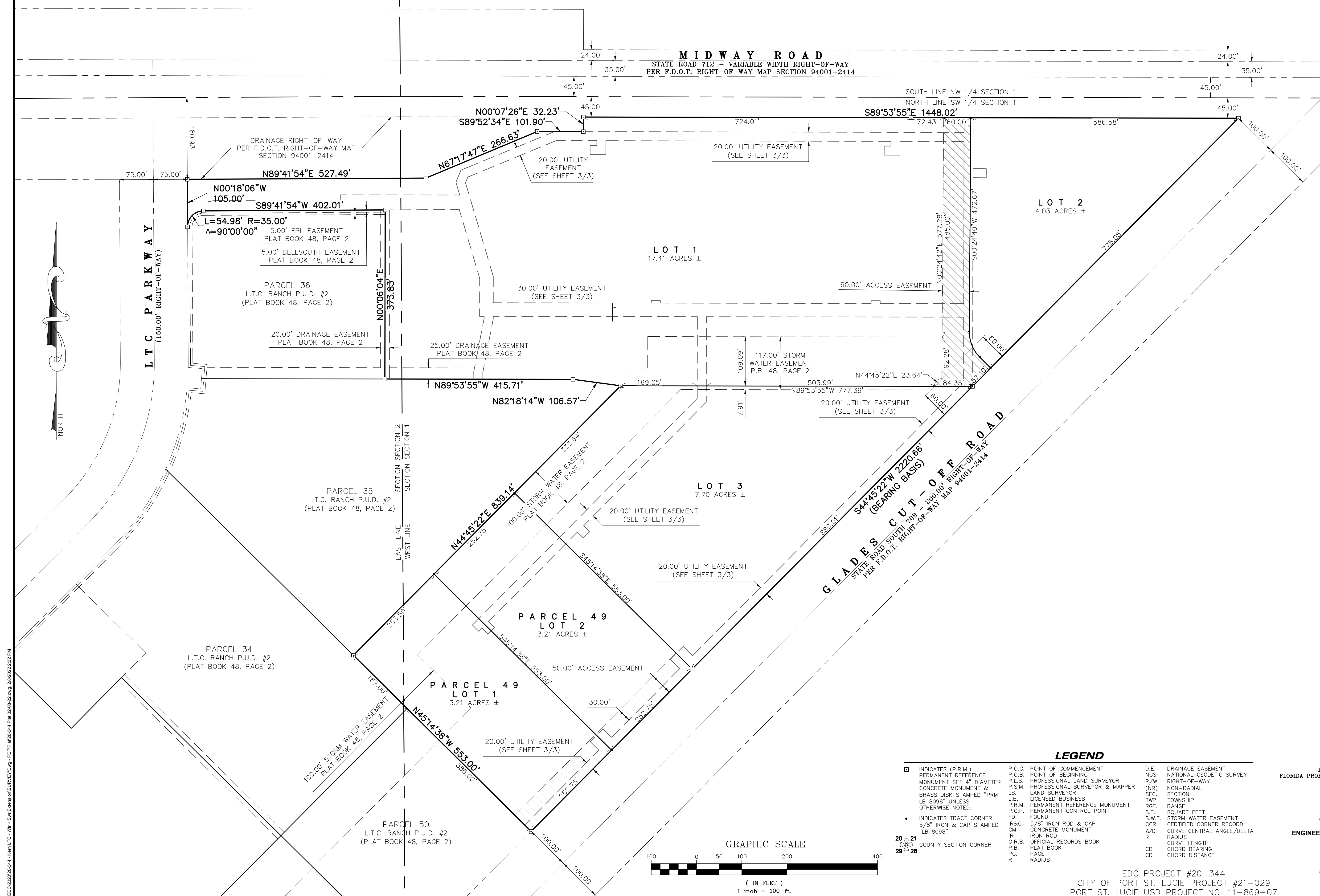




# L.T.C. RANCH P.U.D. #2 REPLAT #2

A REPLAT OF TRACT "7" AND PARCEL 49 OF L.T.C. RANCH P.U.D. #2 AS RECORDED IN PLAT BOOK 48, PAGE 2 AND BEING A PORTION OF SECTIONS 1 & 2, TOWNSHIP 36 SOUTH, RANGE 39 EAST, CITY OF PORT ST. LUCIE, ST. LUCIE COUNTY, FLORIDA

PLAT BOOK \_\_\_\_\_  
PAGE \_\_\_\_\_  
DOCKET NO. \_\_\_\_\_



**LEGEND**

□ INDICATES (P.R.M.) PERMANENT REFERENCE MONUMENT SET 4" DIAMETER CONCRETE MONUMENT & BRASS DISK STAMPED "PRM LB 8098" UNLESS OTHERWISE NOTED.	• INDICATES TRACT CORNER 5/8" IRON & CAP STAMPED "LB 8098"	○ COUNTY SECTION CORNER	P.O.C. POINT OF COMMENCEMENT	P.O.B. POINT OF BEGINNING	P.L.S. PROFESSIONAL LAND SURVEYOR	P.S.M. PROFESSIONAL SURVEYOR & MAPPER	L.S. LAND SURVEYOR	L.B. LICENSED BUSINESS	P.R.M. PERMANENT REFERENCE MONUMENT FOUND	IR&C 5/8" IRON ROD & CAP CONCRETE MONUMENT	IR IRON ROD	O.R.B. OFFICIAL RECORDS BOOK	P.B. PLAT BOOK	P.G. PAGE	R RADIUS	D.E. DRAINAGE EASEMENT	NGS NATIONAL GEODETIC SURVEY	R/W RIGHT-OF-WAY	(NR) NON-RADIAL	SEC. SECTION	TWP. TOWNSHIP	RGE. RANGE	S.F. SQUARE FEET	S.W.E. STORM WATER EASEMENT	COR CERTIFIED CORNER RECORD	A/D CURVE CENTRAL ANGLE/DELTA	R RADIUS	L CURVE LENGTH	CB CHORD BEARING	CD CHORD DISTANCE
--	--	-------------------------	------------------------------	---------------------------	-----------------------------------	---------------------------------------	--------------------	------------------------	---	--	-------------	------------------------------	----------------	-----------	----------	------------------------	------------------------------	------------------	-----------------	--------------	---------------	------------	------------------	-----------------------------	-----------------------------	-------------------------------	----------	----------------	------------------	-------------------

Z:\EDC\2020\20-344-Kim.LTC-VW-SW-Easement\SURVEY\DWG - PDP\Plat\20-344.Plat 02:48:32.dwg, 28/09/2022 2:32 PM

PREPARED BY MICHAEL T. OWEN  
FLORIDA PROFESSIONAL SURVEYOR AND MAPPER No. 5556

**ENGINEERS SURVEYORS ENVIRONMENTAL**

PORT SAINT LUCIE  
10250 SW VILLAGE PARKWAY SUITE 201  
PORT SAINT LUCIE, FL 34987  
© 1990-2022  
www.edc-inc.com

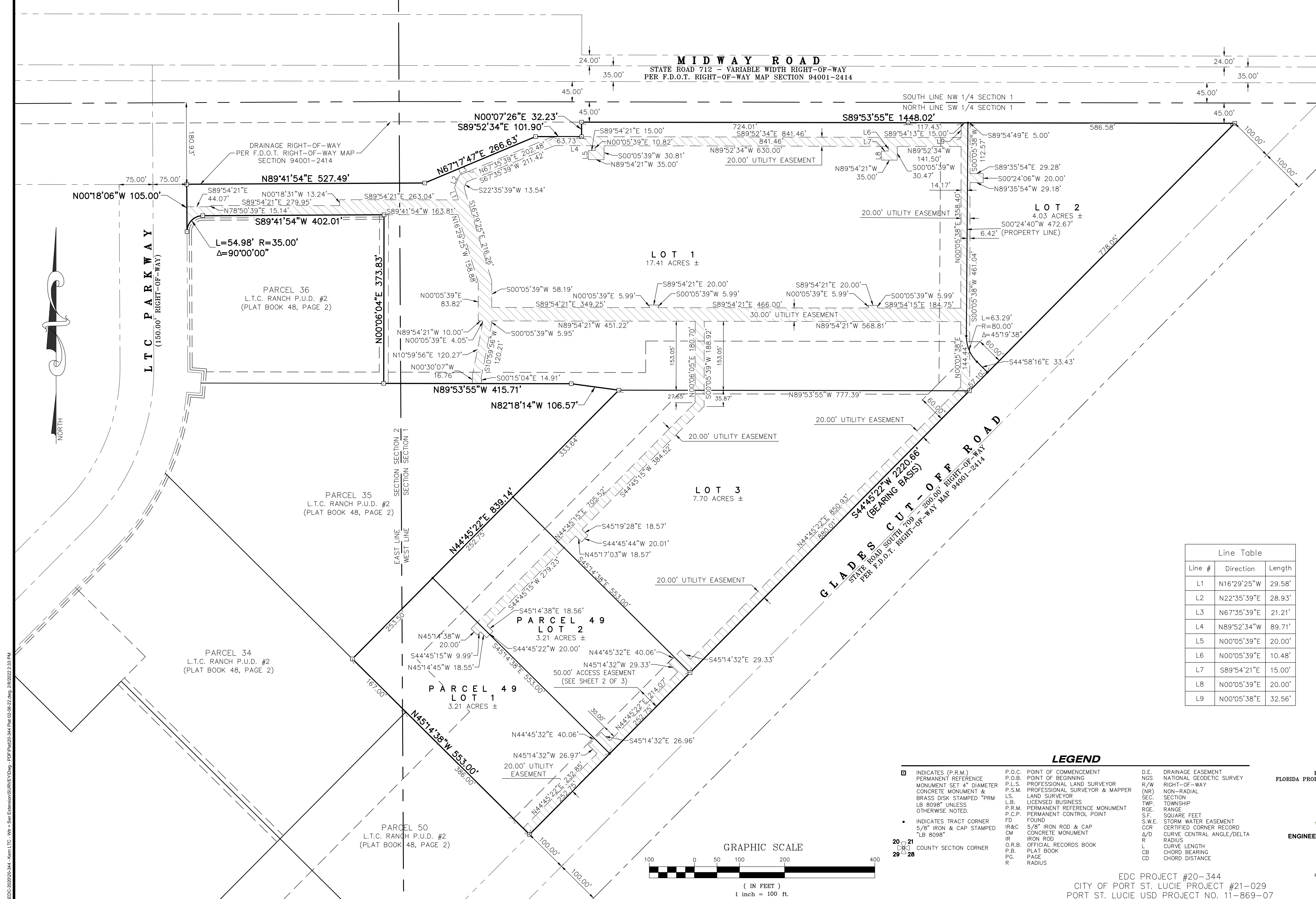
F.B.P.E. CERTIFICATE OF AUTHORIZATION 8935  
L.B. CERTIFICATE OF AUTHORIZATION 8098

EDC PROJECT #20-344  
CITY OF PORT ST. LUCIE PROJECT #21-029  
PORT ST. LUCIE USD PROJECT NO. 11-869-07

# L.T.C. RANCH P.U.D. #2 REPLAT #2

A REPLAT OF TRACT "7" AND PARCEL 49 OF L.T.C. RANCH P.U.D. #2 AS RECORDED IN PLAT BOOK 48, PAGE 2 AND BEING A PORTION OF SECTIONS 1 & 2, TOWNSHIP 36 SOUTH, RANGE 39 EAST, CITY OF PORT ST. LUCIE, ST. LUCIE COUNTY, FLORIDA

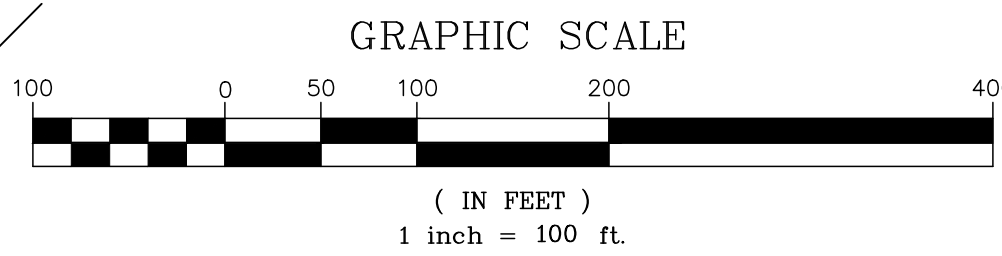
PLAT BOOK \_\_\_\_\_  
PAGE \_\_\_\_\_  
DOCKET NO. \_\_\_\_\_



Line #	Direction	Length
L1	N16°29'25"W	29.58'
L2	N22°35'39"E	28.93'
L3	N67°35'39"E	21.21'
L4	N89°52'34"W	89.71'
L5	N00°05'39"E	20.00'
L6	N00°05'39"E	10.48'
L7	S89°54'21"E	15.00'
L8	N00°05'39"E	20.00'
L9	N00°05'38"E	32.56'

### LEGEND

- INDICATES (P.R.M.) PERMANENT REFERENCE MONUMENT SET 4" DIAMETER CONCRETE MONUMENT & BRASS DISK STAMPED "PRM LB 8098" UNLESS OTHERWISE NOTED.
- INDICATES TRACT CORNER 5/8" IRON & CAP STAMPED "LB 8098"
- ① COUNTY SECTION CORNER
- P.O.C. POINT OF COMMENCEMENT
- P.O.B. POINT OF BEGINNING
- P.L.S. PROFESSIONAL LAND SURVEYOR
- P.S.M. PROFESSIONAL SURVEYOR & MAPPER
- L.S. LAND SURVEYOR
- L.B. LICENSED BUSINESS
- P.R.M. PERMANENT REFERENCE MONUMENT FOUND
- P.C.P. PERMANENT CONTROL POINT
- IR&C 5/8" IRON ROD & CAP CONCRETE MONUMENT
- IR IRON ROD
- O.R.B. OFFICIAL RECORDS BOOK
- P.B. PLAT BOOK
- P.G. PAGE
- R RADIUS
- D.E. DRAINAGE EASEMENT
- NGS NATIONAL GEODETIC SURVEY
- R/W RIGHT-OF-WAY
- (NR) NON-RADIAL
- SEC. SECTION
- TWP. TOWNSHIP
- RGE. RANGE
- S.F. SQUARE FEET
- S.W.E. STORM WATER EASEMENT
- C.C.R. CERTIFIED CORNER RECORD
- Δ/D CURVE CENTRAL ANGLE/Delta
- R RADIUS
- L CURVE LENGTH
- CB CHORD BEARING
- CD CHORD DISTANCE



PREPARED BY MICHAEL T. OWEN  
FLORIDA PROFESSIONAL SURVEYOR AND MAPPER No. 5556

ENGINEERS SURVEYORS & ENVIRONMENTAL  
PORT SAINT LUCIE  
10250 SW VILLAGE PARKWAY SUITE 201  
PORT SAINT LUCIE, FL 34987  
© 1990-2000  
www.edc-inc.com

EDC PROJECT #20-344  
CITY OF PORT ST. LUCIE PROJECT #21-029  
PORT ST. LUCIE USD PROJECT NO. 11-869-07

F.B.P.E. CERTIFICATE OF AUTHORIZATION 8935  
L.B. CERTIFICATE OF AUTHORIZATION 8098