

CITY CENTER MASTER SIGN PROGRAM

City of Port St. Lucie



April 11, 2011, P11-024 (Ord. 11-35)
February 10, 2020, P19-231 (Ord. 20-10) 1st Amendment



EXHIBIT A

Introduction

This Master Sign Program provides a comprehensive overview of signs within the City Center PUD (Planned Unit Development). The guidelines are not intended to restrict imagination, innovation, or variety, ~~but~~ They are intended to assist in creating a consistent, and well-planned solution for sign usage ~~identification~~ throughout the development ~~center~~.

Procedure

All ~~proposed~~ signs addressed within this program, prior to Permit application submittal ~~for a sign permit from~~ to the City of Port St. Lucie, must be approved in writing by the City of Port St. Lucie Community Redevelopment Agency (CRA), ~~which will review signs based on the criteria that follows.~~ A letter of approval from the City of Port St. Lucie CRA must be submitted with the application to the City of Port St. Lucie. The CRA will review signs based on the criteria that follows.

Background

The sign guidelines in this manual supersede existing City of Port St. Lucie Land Development Regulations ~~codes and ordinances~~ and the City Center PUD. Existing city codes shall be used for sign criteria not addressed in this program.

~~City Center Primary Monument Sign #1 (See Figure 1)~~

One (1) primary monument sign ~~is~~ shall be located at the southeast quadrant of the intersection of Walton Road and US Highway US#1. ~~LED variable display message boards may be located on the middle section of the structure and shall be no more than~~ This sign type currently exist as indicated on attached Exhibit A. The sign may consist of a single electric message sign featuring text messages and high-powered graphic images in either monochrome or full color. The electric message sign portion of the sign may be a maximum of 100 square feet, on each side, and limited in use by the Civic Center. Non-LED signage may be located directly below the LED message board and shall be no more than The monument sign may also include a maximum of 100 square foot area of non-electric message sign. This section shall be for City Center tenant use. The sign may be a maximum of 30 feet in height. The City Center tenants are defined as businesses located within the City Center PUD. feet on each side. "CITY CENTER", located at the top of the structure, shall be no more than 40 square feet on each side. The existing decorative pilasters may be removed.

~~Monument Entry Signs – Type I (See Figure 2)~~

~~A second monument sign is located near the entrance to the Frontage Road that extends from Highway US1. The top of the sign shall indicate "CITY CENTER" in the same lettering style as exhibited on the City Center primary monument sign. The signage lettering height shall be 12" in height and the signage area may be no more than 18 square feet on one side. See Figure~~

~~2. for dimensions for top part of the sign. Non-LED signage may be located beneath the "CITY CENTER" signage and shall be no more than 50 square feet on one side.~~

~~**Monument Entry Signs – Type I or II (See Exhibit Figures 2 & 3 B)**~~

~~Four, Two other monument type entry signs are permitted at project street entrances at Highway US 1, Walton Road and Village Green Drive, and on the Frontage Road. Signs shall be located outside the right of way. These signs may be Type I or II.~~

Primary Monument Sign #2

One (1) primary monument sign may be located along US Highway #1, south of the entrance to City Center at SE Village Square Drive, in the vicinity of the northbound right turn lane into City Center. The sign may consist of a single electric message sign featuring text messages and high-powered graphic images in either monochrome or full color. The electric message sign portion of the sign may be a maximum of 160 square feet. This sign shall be for City use. The sign may be a maximum of 40 feet in height.

Secondary Monument Signs

Secondary Monument Signs are permitted at each ingress/egress off Walton Road, Post Terrace, and US Highway #1 to the City Center PUD property. An existing sign is located along Highway US #1 along Frontage Road Access as indicated on attached Exhibit A. One sign may be located on one of the sides of each entry. The sign may be located within a ROW. Signs may be a maximum of 50 square feet. The sign may be for City and City Center tenant use. The sign may be no more than 15 feet in height.

Parking Garage signage

Two (2) façade signs, one (1) per façade, are permitted on the parking garage. Each sign may be a maximum of 351.25 square feet.

~~**Overhang Signs**~~ **Projected Blade Signs and/or Blade Signs hanging from a structure**

~~Overhang signs shall be permitted provided they do not exceed~~ Blade signs located on City Center, Event Center, or parking garage buildings shall follow the following regulations. Each sign may be a maximum of 35 25 square feet. ~~in overall area and~~ Blade signs shall provide at least 8' vertical clearance from the sidewalk grade. Signs shall not project more than 5' from the building face. There is no limit to the amount of such signs on these locations. A 96 square foot double face sign is permitted to be suspended below the eave of One (1) hanging blade sign may be located on the Village Square stage. The sign may be a maximum of 100 square feet.

All other blade signs shall follow City Sign Code requirements.

~~**Village Square Freestanding Archway Sign**~~

~~A freestanding archway structure will be located adjacent to Village Square and will be approximately 21-foot wide by 16-foot high. A 30 square foot sign will be centered at the~~

~~top of the archway.~~

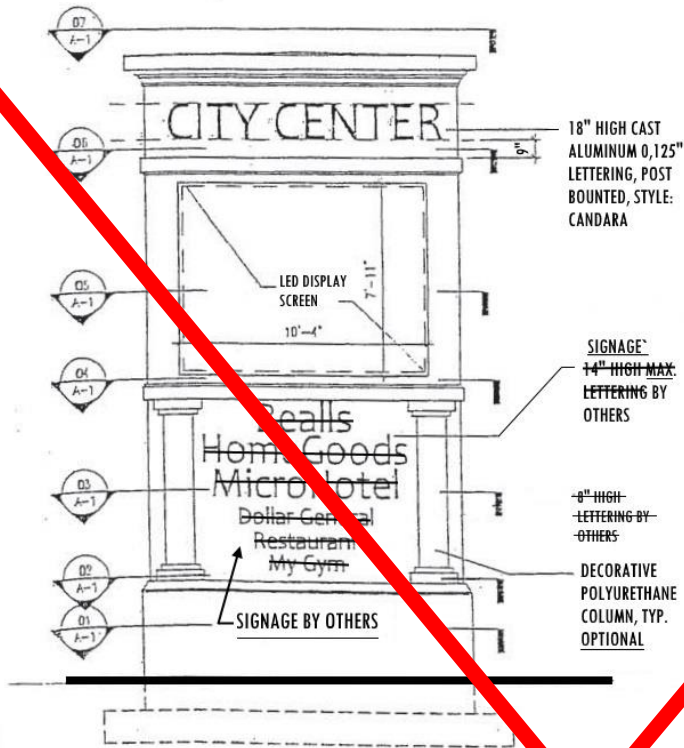


Figure 1. Existing Primary Monument Sign at Corner of US #1 and Walton Road.

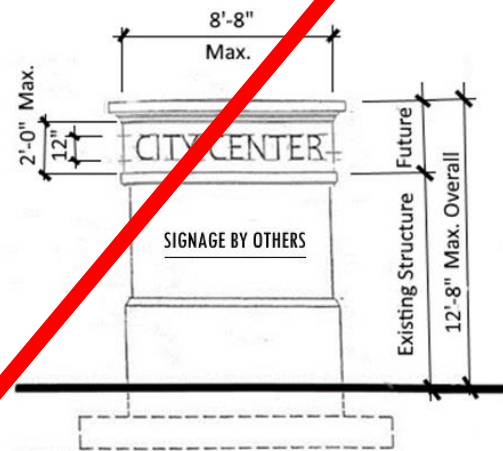


Figure 2. Monument Sign Type #1. Refer to construction drawings for dimensions of the existing sign structure. See file P19-231.

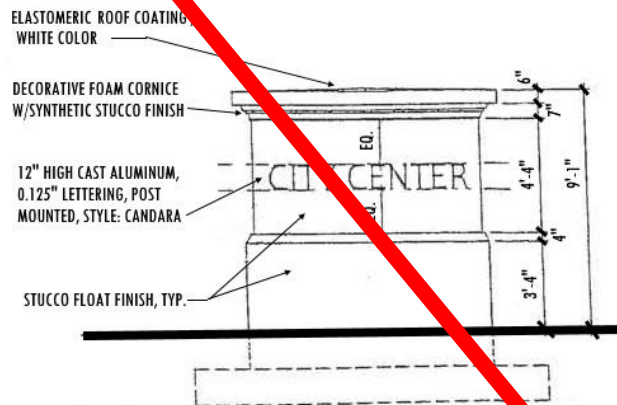





Figure 3. Monument Sign Type #2. Refer to construction drawings for dimensions. See file P19-231.

Construction Document Files: P&Z file P19-231, P11-024.

Exhibit A



-  Ingress/egress areas for secondary monument signs
-  Existing Signs
-  Proposed Sign