

RESOLUTION 24-R72

A RESOLUTION TO SUPPORT RENAMING A ROAD RIGHT-OF-WAY WITHIN THE VERANO SOUTH PUD 1-POD G-PLAT NO. 1 PLAT AS LEGALLY DESCRIBED AND DEPICTED ON EXHIBIT “A”; PROVIDING FOR CONFLICT; PROVIDING FOR SEVERABILITY; AND PROVIDING AN EFFECTIVE DATE.

WHEREAS, the Verano #5 Community Development District, property owner, seeks to rename the road right-of-way legally described within Exhibit “A” and depicted on page three (3) of Exhibit “A”, attached hereto, and identified as E/W 3, and within the City of Port St. Lucie, Marshall Parkway; and

WHEREAS, the City of Port St. Lucie Planning and Zoning Board held a public hearing on September 5, 2024, to consider the street name change request (P24-102), notice of said hearing to adjoining property owners for a radius of seven hundred and fifty (750) feet having been given and advertising of public hearing having been made; and

WHEREAS, the City Council held a public hearing on September 23, 2024, to consider the street name change request (P24-102), advertising of the public hearing having been made.

NOW, THEREFORE, BE IT RESOLVED BY THE CITY OF PORT ST. LUCIE, FLORIDA:

Section 1. Ratification of Recitals. The foregoing recitals are hereby ratified and confirmed as true and correct and are hereby made a part of this Resolution.

Section 2. The City Council supports renaming the road right-of-way legally described within Exhibit “A” and depicted on page three (3) of Exhibit “A”, attached hereto, and identified as SW Pietra Way, and within the City of Port St. Lucie, to SW Macelli Way.

Section 3. Conflict. If any resolutions, or parts of resolutions, are in conflict herewith, this Resolution shall control to the extent of the conflicting provisions.

Section 4. Severability. The provisions of this Resolution are intended to be severable. If any part of this Resolution is determined to be void or is declared illegal, invalid, or unconstitutional by a Court of competent jurisdiction, the remainder of this Resolution shall

RESOLUTION 24-R72

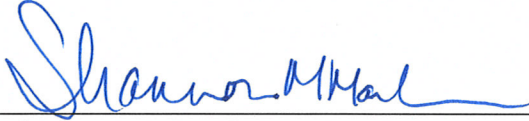
remain in full force and effect.

Section 5. Effective Date. This Resolution shall become effective immediately upon adoption.

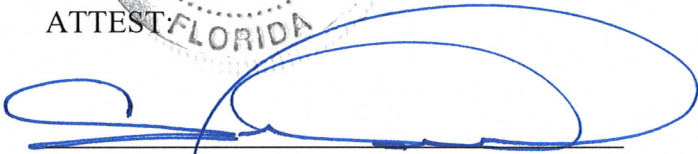
PASSED AND ADOPTED by the City Council of the City of Port St. Lucie, Florida, this 23rd day of September 2024.

CITY OF PORT ST. LUCIE, FLORIDA



BY: 
Shannon M. Martin, Mayor

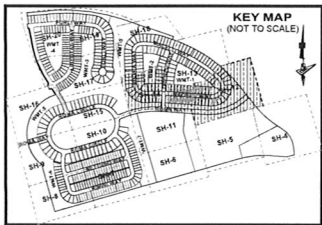
ATTEST:


Sally Walsh, City Clerk

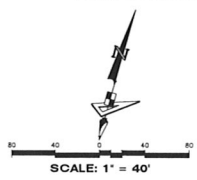
APPROVED AS TO FORM:

BY: 
Richard Berrios, City Attorney

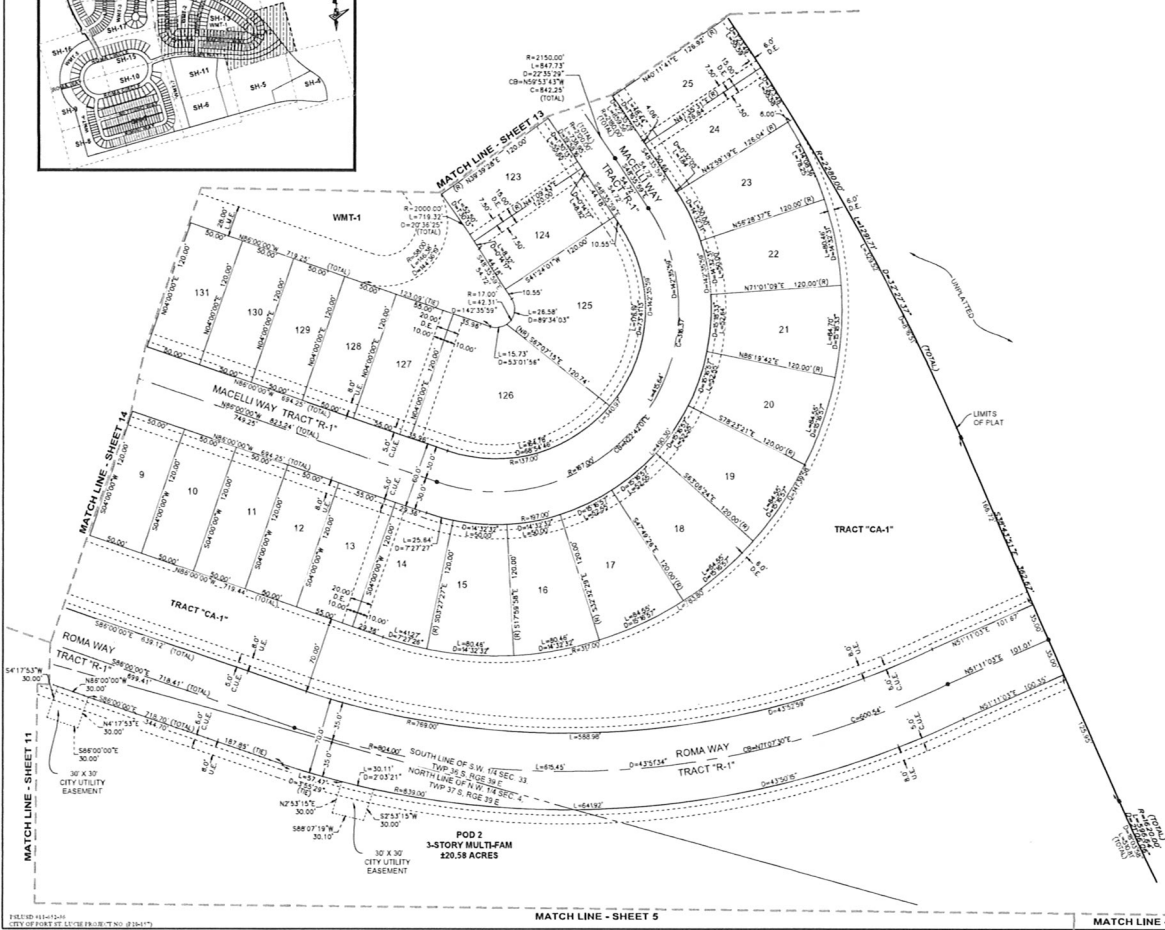
VERANO SOUTH P.U.D. I - POD G - PLAT NO. I
 BEING A PORTION OF SECTIONS 12 AND 13, TOWNSHIP 36 SOUTH, RANGE 19 EAST,
 AND SECTIONS 4 AND 5, TOWNSHIP 37 SOUTH, RANGE 19 EAST,
 CITY OF PORT ST. LUCIE, ST. LUCIE COUNTY, FLORIDA.



PLAT BOOK
PAGE
FILE NO.
DATE
TIME



- LEGEND**
- P.B. Plot Book
 - Pg(A) Page(s)
 - S.F.W.M.D. South Florida Water Management District
 - A.E. Access Easement
 - C.U.E. City Utility Easement
 - D.E. Drainage Easement
 - E.A.E. Emergency Access Easement
 - L.M.E. Lake Maintenance Easement
 - U.E. Utility Easement
 - L.E. Landscape Easement
 - WMT Stormwater Management Tract
 - E Centerline
 - R/W Right-of-Way
 - P.U.D. Planned Unit Development
 - R Radius
 - L Arc Length
 - D Delta-Central Angle
 - CB Chord Bearing
 - C Chord Length
 - (R) Radial
 - (NR) Non-Radial
 - C.M. Concrete Monument
 - LB Licensed Business
 - Indicates (PRM) Permanent Reference Monument of 4" Concrete Monument LB7768 (Unless Otherwise Noted)
 - Indicates (PCR) Permanent Control Point LB7768



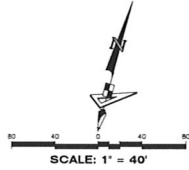
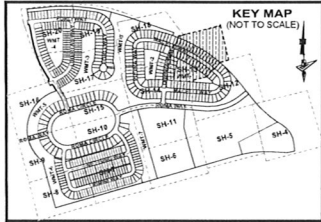
GeoPoint
 Surveying, Inc.

4111 St. Johns Ave. Phone: 888.888.0700
 Suite 200, Port St. Lucie, FL 34952
 www.geopointsurvey.com
 State Book 11 1206

SHEET 12 OF 20 SHEETS

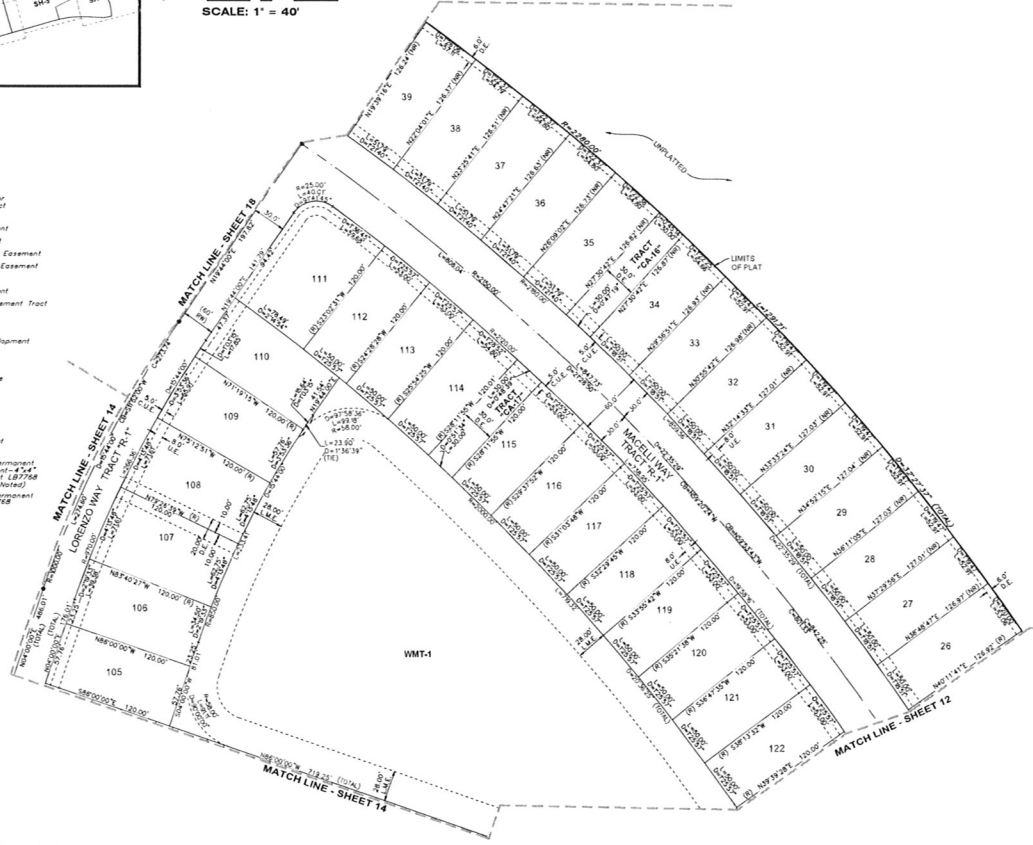
VERANO SOUTH P.U.D. I - POD G - PLAT NO. 1

BEING A PORTION OF SECTIONS 22 AND 33, TOWNSHIP 36 SOUTH, RANGE 39 EAST,
AND SECTIONS 4 AND 5, TOWNSHIP 37 SOUTH, RANGE 39 EAST,
CITY OF FORT ST. LUCIE, ST. LUCIE COUNTY, FLORIDA.



PLAT BOOK
PAGE
FILE NO.
DATE
TITLE

- LEGEND**
- P.B. Plat Book
 - Pg(s). Page(s)
 - S.F.W.M.D. South Florida Water Management District
 - A.E. Access Easement
 - C.U.E. City Utility Easement
 - D.E. Drainage Easement
 - E.A.E. Emergency Access Easement
 - L.M.E. Lake Maintenance Easement
 - U.E. Utility Easement
 - L.E. Landscape Easement
 - WMT Stormwater Management Tract
 - E. Contour
 - R/W. Right-of-Way
 - P.U.D. Planned Unit Development
 - R. Radius
 - L. Arc Length
 - D. Delta-Central Angle
 - CB. Chord Bearing
 - C. Chord Length
 - (M) Medal
 - (N) Non-Radial
 - C.M. Concrete Monument
 - LB. Licensed Business
 - (FBI) Permanent Reference Monument - 4" x 4" Concrete Monument - LB756 (Unless Otherwise Noted)
 - (FBI) Permanent Control Point - LB756



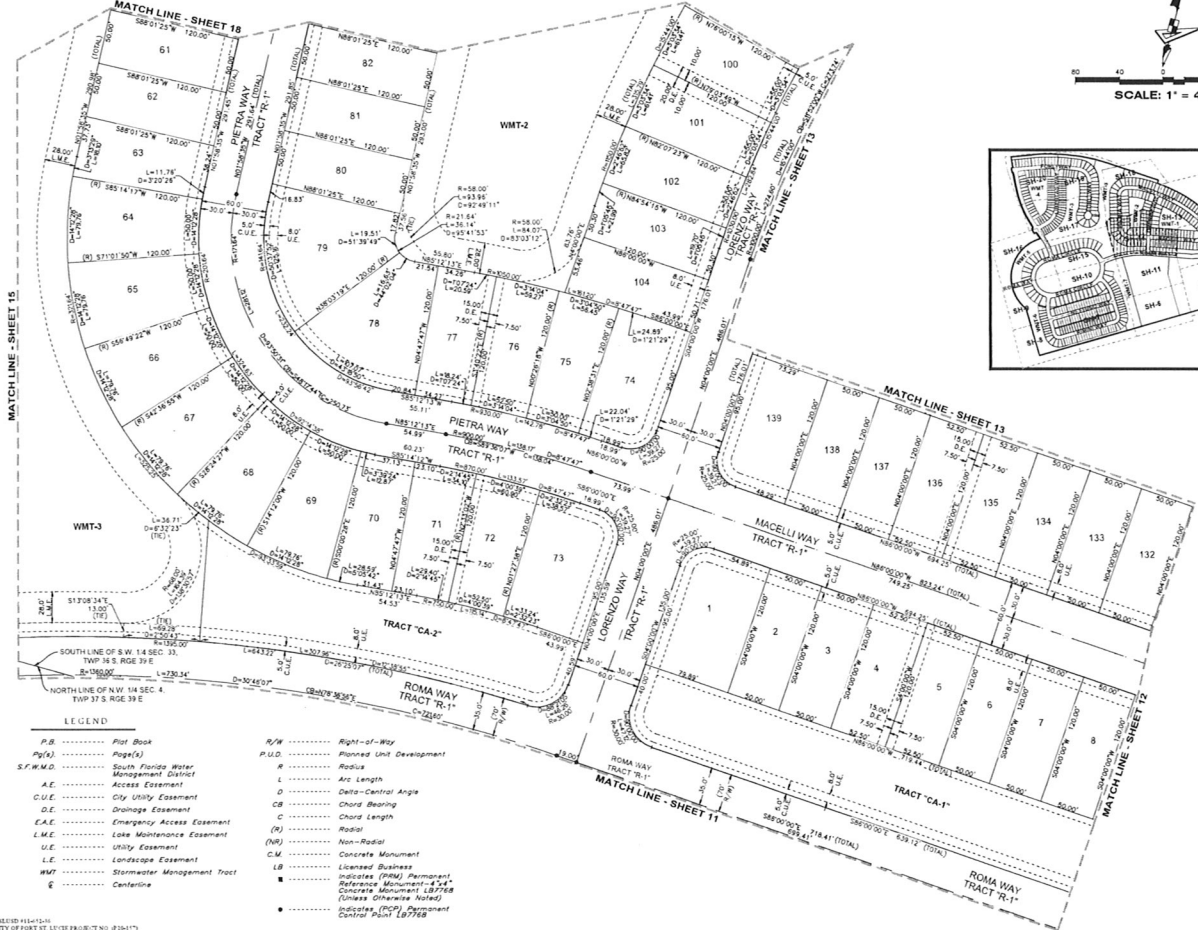
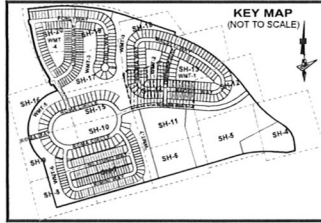
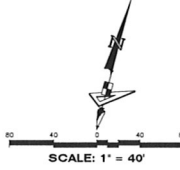
GeoPoint
Surveying, Inc.

117-20 Blue Hawk Blvd. Phone: (352) 444-2720
 Suite 100. www.GeoPointSurveying.com
 Fort Pierce, FL 34946
SHEET 13 OF 20 SHEETS

FILED 11-14-14
 CITY OF FORT ST. LUCIE, FLORIDA

VERANO SOUTH P.U.D. I - POD G - PLAT NO. 1
 BEING A PORTION OF SECTIONS 32 AND 33, TOWNSHIP 39 SOUTH, RANGE 39 EAST,
 AND SECTIONS 4 AND 5, TOWNSHIP 37 SOUTH, RANGE 39 EAST,
 CITY OF PORT ST. LUCIE, ST. LUCIE COUNTY, FLORIDA.

PLAT BOOK
PAGE
FILE NO.
DATE
TIME



LEGEND

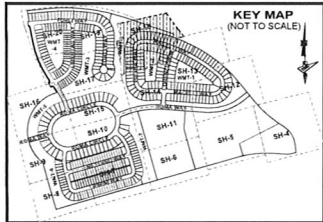
- | | |
|---|--|
| P.B. Plat Book | R/W Right-of-Way |
| Pg. (S) Page(s) | P.U.D. Planned Unit Development |
| S.F.W.M.D. South Florida Water Management District | R Radius |
| A.E. Access Easement | L Arc Length |
| C.U.E. City Utility Easement | D Delta-Central Angle |
| D.E. Drainage Easement | CB Chord Bearing |
| E.A.E. Emergency Access Easement | C Chord Length |
| L.M.E. Lake Maintenance Easement | (R) Radial |
| U.E. Utility Easement | (NR) Non-Radial |
| L.E. Landscape Easement | C.M. Concrete Monument |
| W.M.T. Stormwater Management Tract | Landmark Building |
| Centerline | Indicates (FRM) Permanent Reference Monument's "X" |
| | Concrete Monument LB7768 (Unless Otherwise Noted) |
| | Indicates (FCP) Permanent Control Point LB7768 |


GeoPoint
 Surveying, Inc.
4117 E. Star Hawk Blvd. Phone: (888) 444-2700
 3800 E. US Highway 1, Suite 1000
 Fort Pierce, FL 34946
 www.geopointsurveying.com
SHEET 14 OF 20 SHEETS

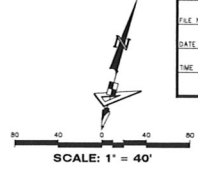
FILED: 11/14/14
 CITY OF PORT ST. LUCIE: 11/14/14

VERANO SOUTH P.U.D. I - POD G - PLAT NO. 1

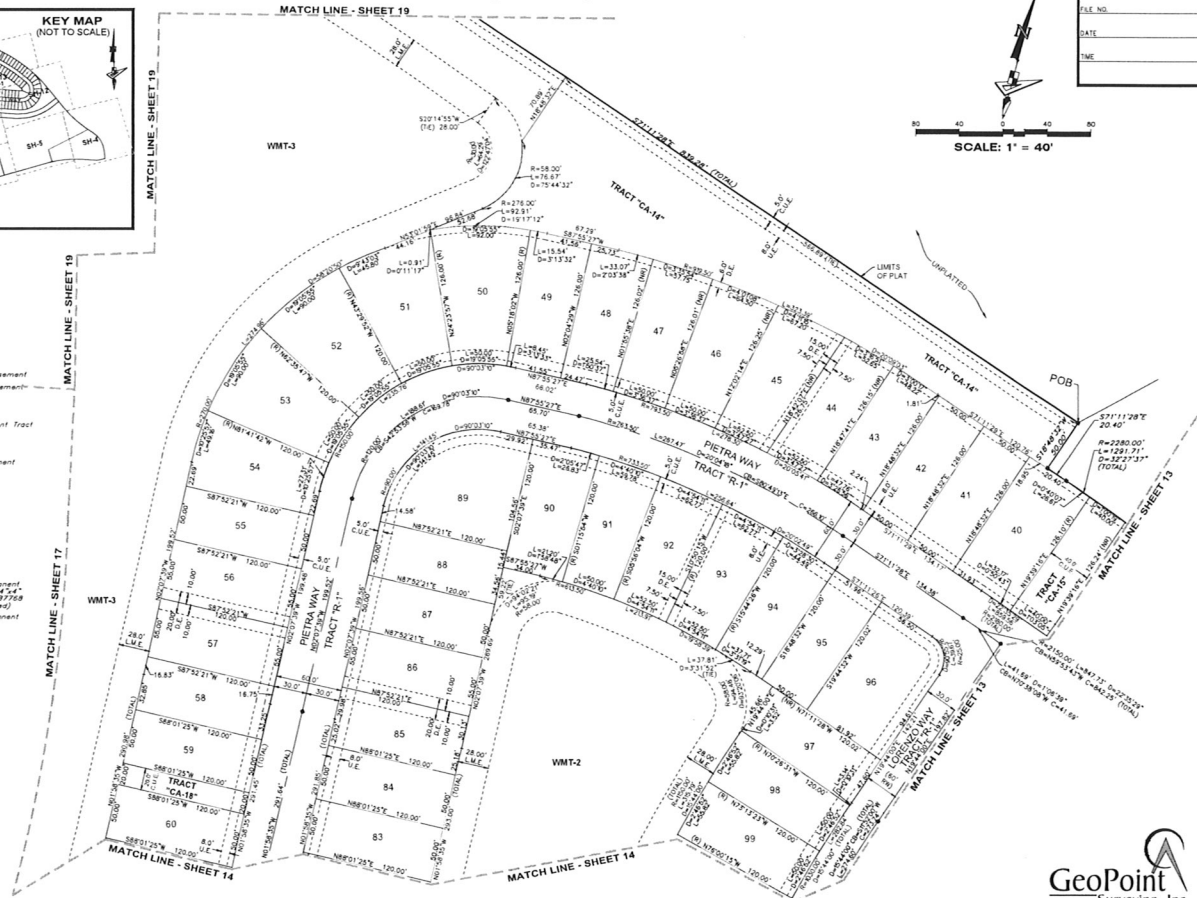
BEING A PORTION OF SECTIONS 12 AND 13, TOWNSHIP 36 SOUTH, RANGE 39 EAST,
AND SECTIONS 4 AND 5, TOWNSHIP 37 SOUTH, RANGE 39 EAST,
CITY OF PORT ST. LUCIE, ST. LUCIE COUNTY, FLORIDA.



PLAT BOOK
PAGE
FILE NO.
DATE
TIME



- LEGEND**
- P.B. Plot Book
 - Pg(A) Page(s)
 - S.F.W.M.D. South Florida Water Management District
 - A.E. Access Easement
 - C.U.E. City Utility Easement
 - D.E. Drainage Easement
 - E.A.E. Emergency Access Easement
 - L.M.E. Lake Maintenance Easement
 - U.E. Utility Easement
 - L.E. Landscape Easement
 - WMT Stormwater Management Tract
 - C Centerline
 - R/W Right-of-Way
 - P.U.D. Planned Unit Development
 - R Radius
 - L Arc Length
 - D Delta-Central Angle
 - CB Chord Bearing
 - C Chord Length
 - R Radial
 - (NR) Non-Record
 - C.M. Concrete Monument
 - L.B. Licensed Business
 - Indicates (PBM) Permanent Reference Monument - 4" x 4" Concrete Monument (2025) (Unless Otherwise Noted)
 - Indicates (PBM) Permanent Control Point (2025)



FILE NO. H5472-01
CITY OF PORT ST. LUCIE 18-000-7-00-0204-17

GeoPoint
Surveying, Inc.

4117 S. Blue Heron Blvd. Phone: (888) 444-7722
Suite 101 www.geopointsurveying.com
Hialeah, FL 33154
SHEET 18 OF 20 SHEETS