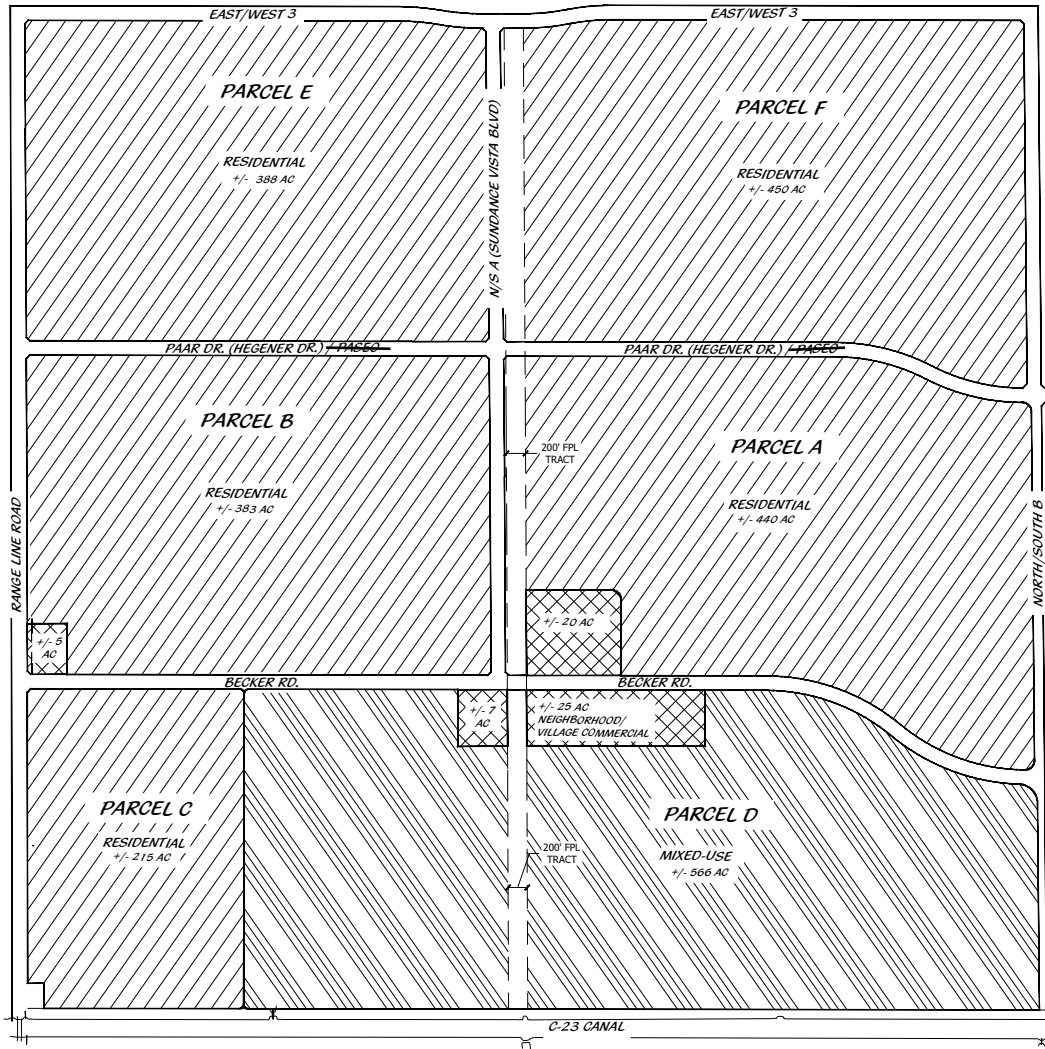


FIGURE 1-6

WILSON GROVE

Port St. Lucie, Florida



PROPOSED LAND USES

RESIDENTIAL	1876 AC
*(INCLUDES ROW ACREAGE)	96 AC
*(INCLUDES FPL ACREAGE)	30 AC
NEIGHBORHOOD/ VILLAGE COMMERCIAL	57 AC
MIXED-USE	566 AC
*(INCLUDES FPL ACREAGE)	15 AC
TOTAL AREA	2,499 AC

*PROPOSED ACREAGES OF SUBDISTRICTS HAVE BEEN ROUNDED TO THE NEAREST +/- 1 ACRE.

LEGEND



RESIDENTIAL
INCLUDING NEIGHBORHOODS OF HOUSING, WHICH NEIGHBORHOOD MAY ALSO CONTAIN SCHOOLS, PARKS, PLACES OF WORSHIP AND CIVIC FACILITIES ESSENTIAL TO THE DAILY LIFE OF THE RESIDENTS



NEIGHBORHOOD / VILLAGE COMMERCIAL
INCLUDING COMMERCIAL AND OFFICE USES, PERSONAL AND HOUSEHOLD SERVICE ESTABLISHMENTS, INSTITUTIONAL USES, PUBLIC FACILITIES, PARKS, PLAYGROUNDS, AND OTHER SIMILAR SERVICES



MIXED USE
INCLUDING COMMERCIAL AND OFFICE USES, HOSPITAL AND MEDICAL USES, RESTAURANTS, THEATERS, HOTELS, INSTITUTIONAL USES, PUBLIC FACILITIES (INCLUDING UTILITIES), LIGHT INDUSTRIAL, WAREHOUSE/DISTRIBUTION, RESIDENTIAL AND OTHER SIMILAR SERVICES

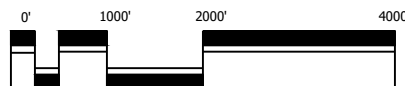
~~*LOCATION AND CONFIGURATION OF ALL DEVELOPMENT PARCELS INCLUDING ACCESS LOCATIONS, LAKES, OPEN SPACE, RESIDENTIAL AND NON-RESIDENTIAL USES WILL BE FULLY DELINEATED DURING THE ZONING AND/OR PLATTING PROCESS.~~

~~THIS MAP IS AN ARTIST'S ILLUSTRATION OF THE GENERALIZED CONCEPT WHICH IS ONE OF MANY ALTERNATIVE SOLUTIONS WHICH SHARE A COMMON UNDERLYING DESIGN BASIS TO PROVIDE A FRAMEWORK WHICH RECOGNIZES THE REGIONAL IMPACTS WHICH THIS SCALE OF ENDEAVOR MAY HAVE AND TO ACCOMMODATE SUCH IMPACTS WITHIN THE LIMITS OF THE LAW AND BALANCED DESIGN IMPERATIVES TO PROVIDE ECONOMICALLY VIABLE AND MARKET SENSITIVE SOLUTIONS TO MEET THE NEEDS OF OUR CUSTOMERS AND THE COMMUNITY THEY CREATE. THE PLAN FOR CONSTRUCTION MAY VARY AS THE NATURAL EVOLUTION OF THE SPECIFIC ENGINEERED SOLUTIONS ARE PROCESSED THROUGH THE VARIOUS DESIGN AND JURISDICTIONAL AUTHORITIES TO FINAL APPROVAL. NOTWITHSTANDING MARGINAL VARIATIONS IN DESIGN AS THE DETAILED ENGINEERING BECOME MORE REFINED, PRIOR APPROVALS SHALL ENTITLE THE APPLICANT WITHOUT RETURNING FOR REVISION REVIEW BY PRIOR AUTHORITY, TO CONTINUE SUBSEQUENT MORE LOCALIZED DECISIONS AS FUNCTIONAL DETAILS BECOME EVIDENT. THE PROPERTY OWNER AND/OR DEVELOPERS RESERVE ALL RIGHTS TO MAKE SUCH ADJUSTMENTS AS NEEDED TO ACCOMPLISH THESE FUNCTIONAL DESIGN ACCOMMODATIONS.~~



Coffeur & Hearing
Landscape Architects
Land Planners
Environmental Consultants
1934 Commerce Lane
Suite 1
Jupiter, Florida 33458
561.747.9326 | Fax 747.1377
www.coffeurhearing.com
Lic# LC-C000239

COMPREHENSIVE LAND USE PLAN WILSON GROVE



Scale: 1" = 2000'



Additions shown as underlined and deletions shown as ~~strikethrough~~