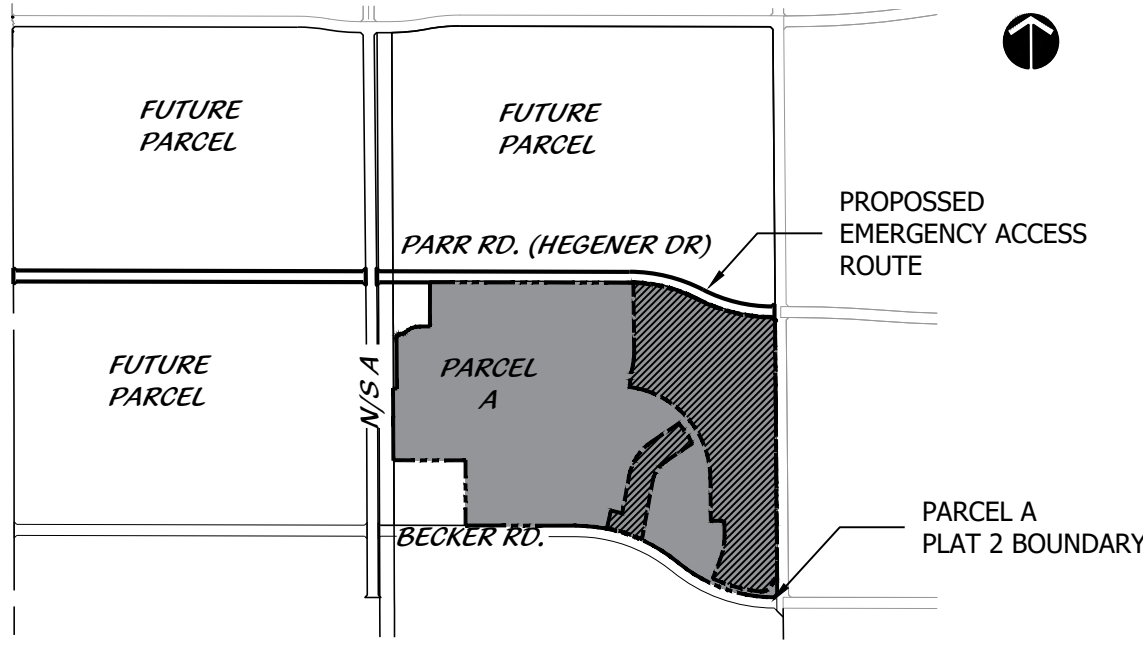


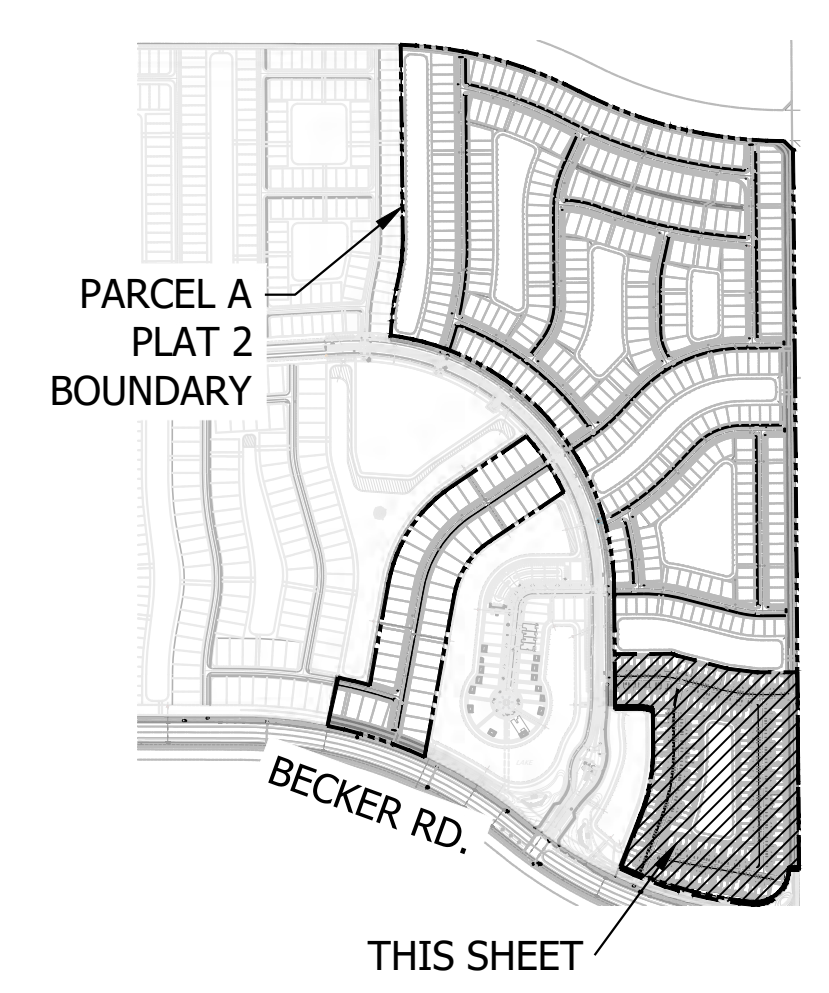
LANDSCAPE DATA

TOTAL PLAT 2 SITE AREA		5,657,024.52 S.F. (129.87 ACRES)	
STREET TREE REQUIREMENTS		REQUIRED	PROVIDED
1 TREE PER LOT (CB)		519	519
* 2 MDSTORY TREES = 1 12' TREE			
LANDSCAPE BUFFER REQUIREMENTS		LENGTH (LF)	REQUIRED
SPECIES MIX (ED, LJ45, QV, RE, SS)		5	5
NORTH (PARR RD) (1 TREE PER 50' LF)		1964.90	39
TOTAL SHRUBS (CONT. HEDGE 2' O.C.)			982
EAST (RIVERLAND BLVD) (1 TREE PER 50' LF)		3542.10	71
TOTAL SHRUBS (CONT. HEDGE 2' O.C.)			1771
SOUTH (BECKER RD) (1 TREE PER 50' LF)		504.50	10
TOTAL SHRUBS (CONT. HEDGE 2' O.C.)			252
NATIVE REQUIREMENTS PER MPUD SEC. 4.(A).4.		REQUIRED	PROVIDED
TOTAL TREES (CRITERIA DOES NOT APPLY TO REQUIRED STREET TREES)		120	120
MINIMUM 50% NATIVE		60	60
MAXIMUM 25% PALM TREES		30	30
MINIMUM 50% DROUGHT TOLERANT		60	60
MINIMUM 20% FLOWERING (LJ45)		24	24
TOTAL SHRUBS		3006	3006
MINIMUM 25% NATIVE		751	3006
MINIMUM 50% DROUGHT TOLERANT		1503	3,006

VICINITY MAP



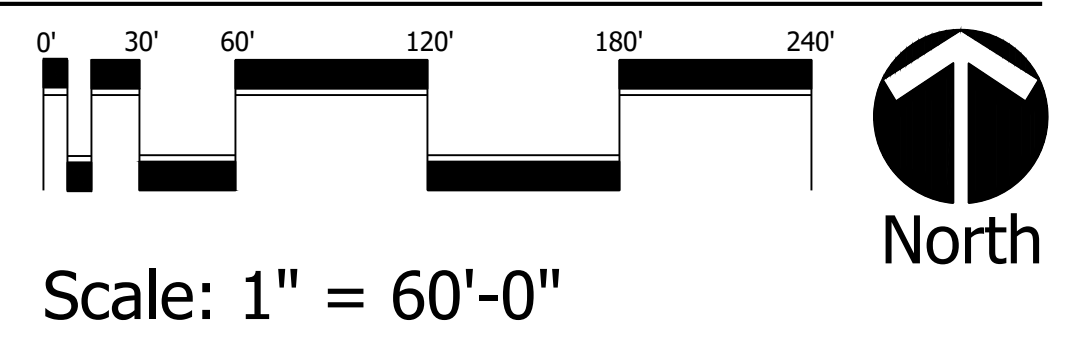
KEY MAP



\*NOTE:  
STREET TREES SHALL BE LOCATED A MINIMUM OF 10' FROM MAINLINE UTILITIES.  
IN CASES WHERE A PROPOSED STREET TREE IS WITHIN 10' OF A SERVICE LINE, A DEEP ROOT BARRIER SHALL BE INSTALLED.  
REFER TO SHEET L8 FOR DETAIL.

PSLUSD # 11-681-A4  
PSL# P24-195

PLAT 2  
LANDSCAPE PLAN

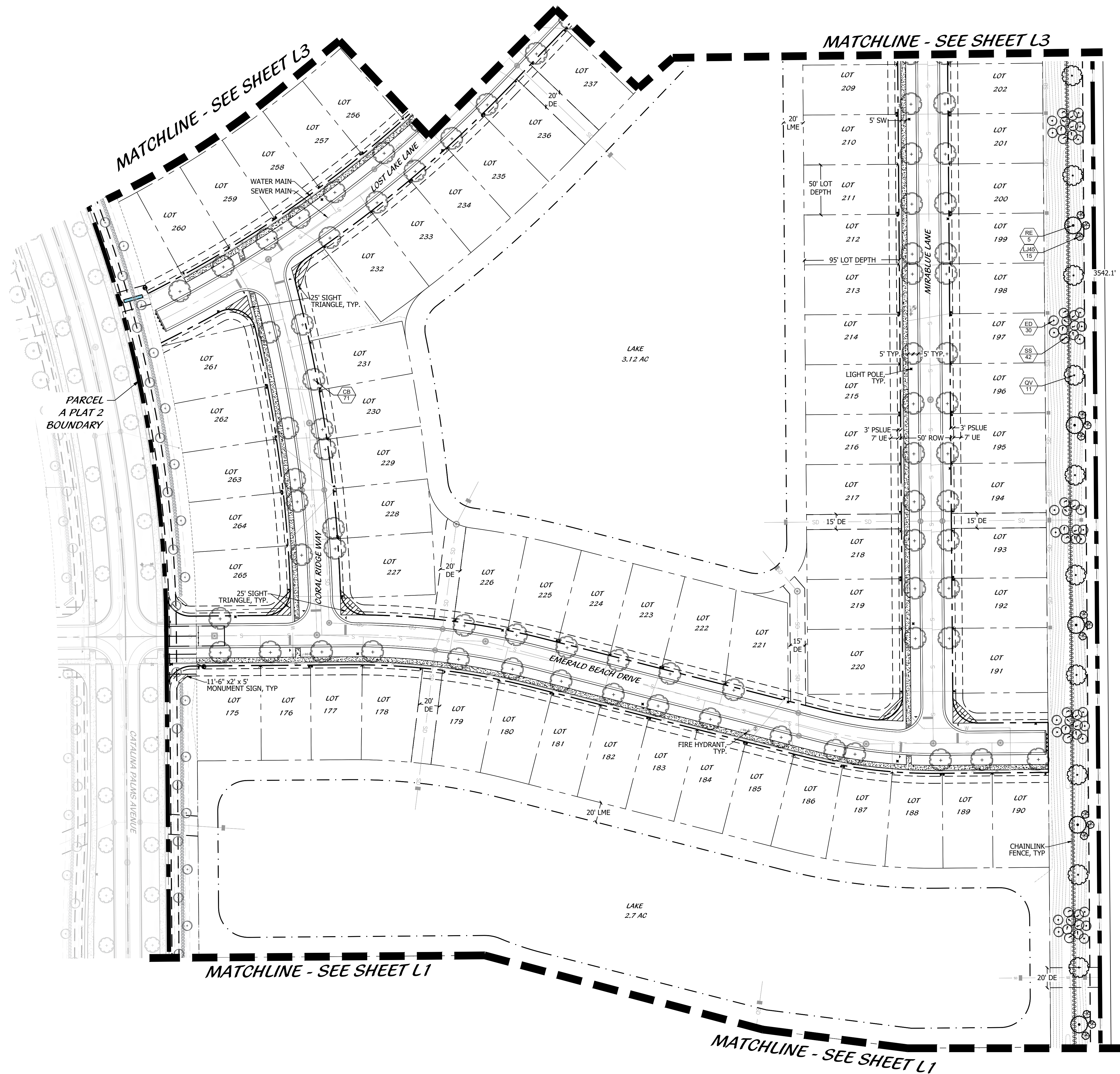


  
**Cotleur & Hearing**  
Landscape Architects  
Land Planners  
Environmental Consultants  
1934 Commerce Lane  
Suite 1  
Jupiter, Florida 33458  
561.747.6336 · Fax 747.1377  
www.cotleurhearing.com  
Lic# LC-C000239

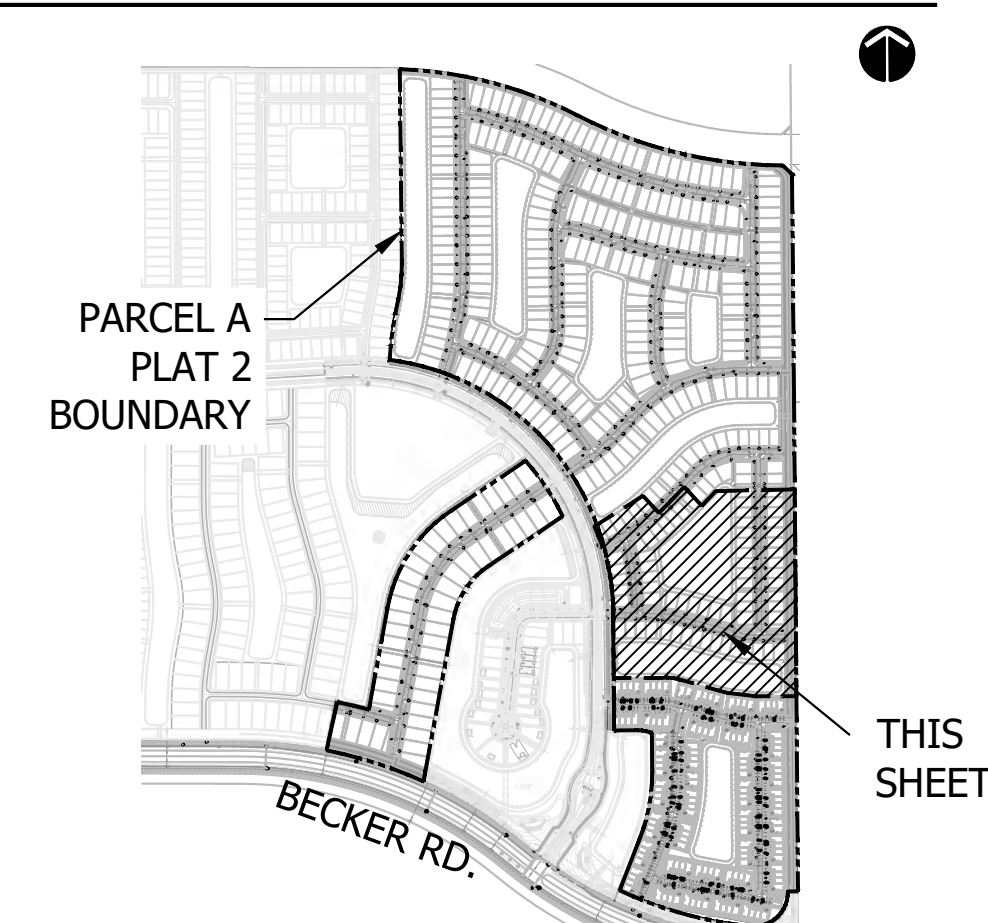
MPUD PARCEL A  
CATALINA PALMS  
Port St. Lucie, Florida

DESIGNED	PRP
DRAWN	PRP
APPROVED	LAH
JOB NUMBER	20-0518
DATE	04-11-25
REVISIONS	





KEY MAP



# MPUD PARCEL A CATALINA PALMS Port St. Lucie, Florida

PSLUSD # 11-681-A4  
PSL# P24-195  
**PLAT 2**  
**LANDSCAPE PLAN**

0' 25' 50' 100' 150' 200'

Scale: 1" = 50'-0"

North

**Cotleur & Hearing**  
Landscape Architects  
Land Planners  
Environmental Consultants  
1934 Commerce Lane  
Suite 1  
Jupiter, Florida 33458  
561.747.6336 · Fax 747.1377  
www.cotleurhearing.com  
Lic# LC-C000239

DESIGNED	PRP
DRAWN	PRP
APPROVED	LAH
JOB NUMBER	20-0518
DATE	04-11-25
REVISIONS	





Lic# LC-C000239

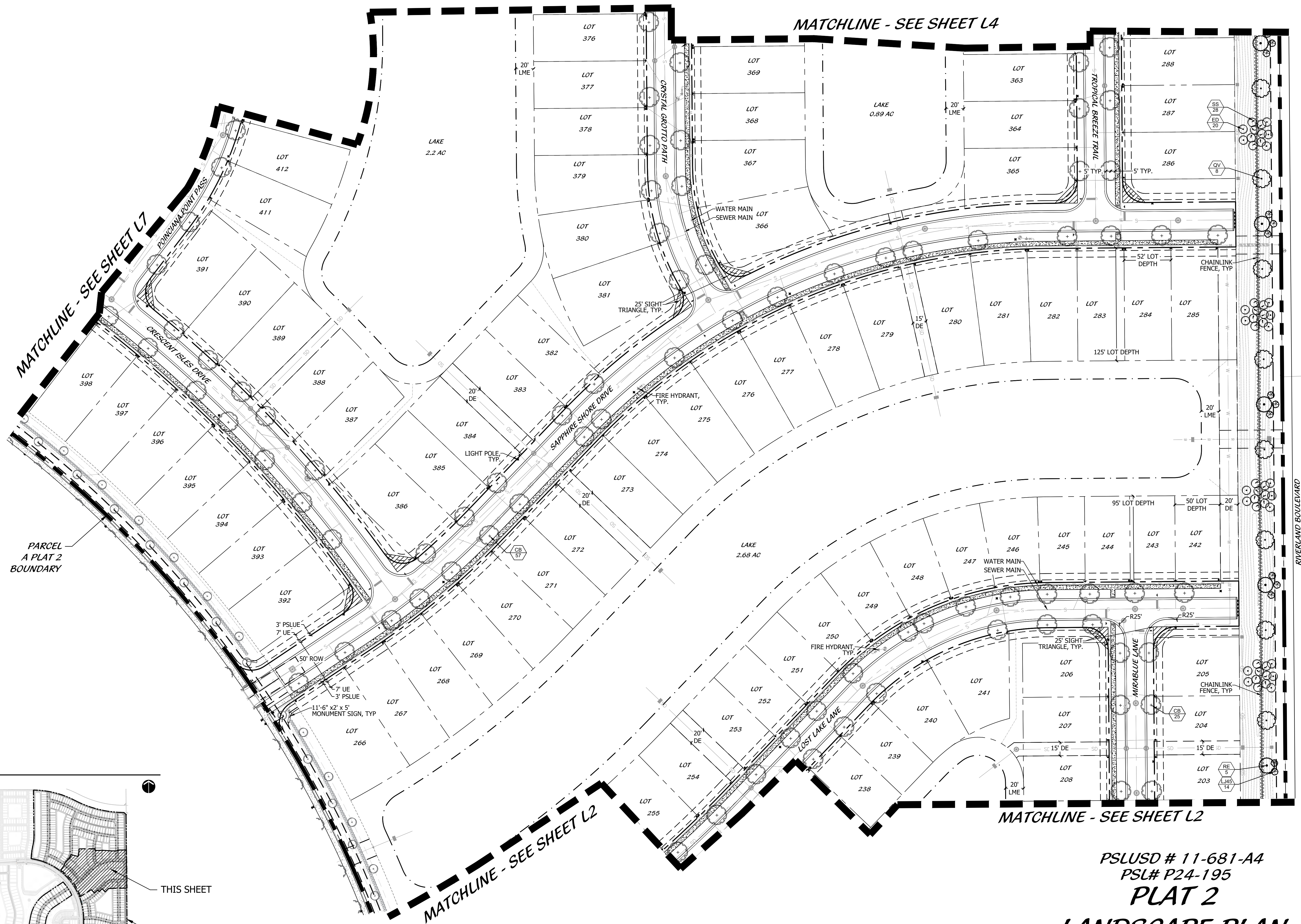
***MPUD PARCEL A***  
***CATALINA PALMS***  
Port St. Lucie, Florida

# Port St. Lucie, Florida

DESIGNED _____	PRP
DRAWN _____	PRP
APPROVED _____	LAH
JOB NUMBER _____	20-0518
DATE _____	04-11-25
REVISIONS _____	

SHEET **L3** OF **8**

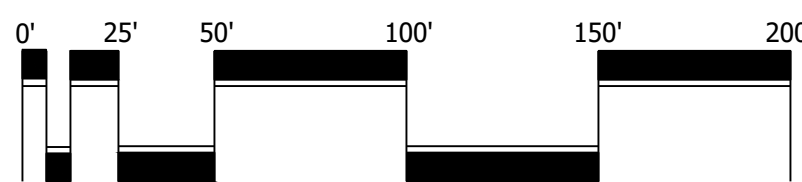
© COTLEUR & HEARING, INC.  
These drawings are the property of the architect and are not to be used for extensions or on other projects except by agreement in writing with the architect. Immediately report any discrepancies to the architect.



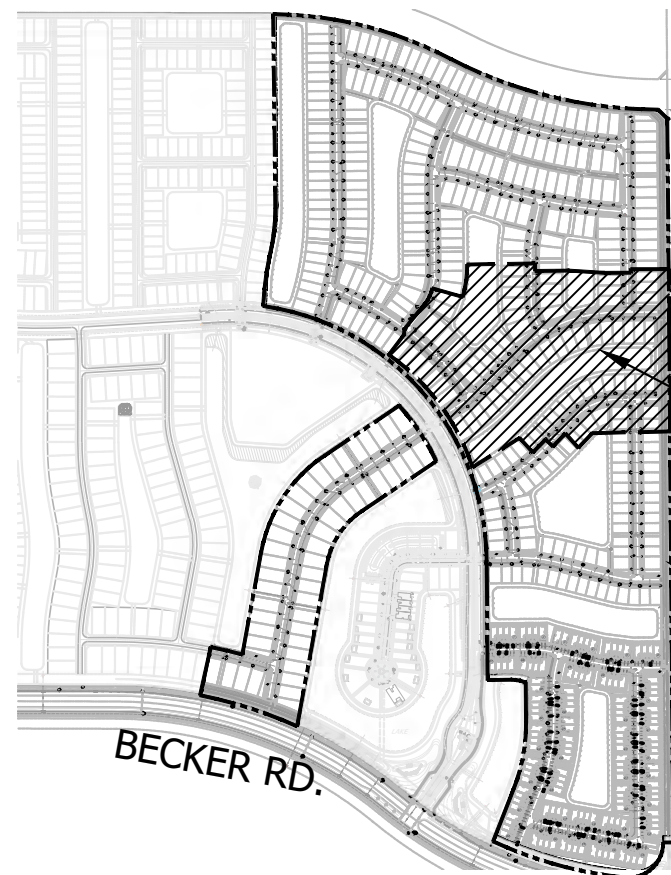
PSLUSD # 11-681-A4  
PSL# P24-195

*PLAT 2*

# LANDSCAPE PLAN



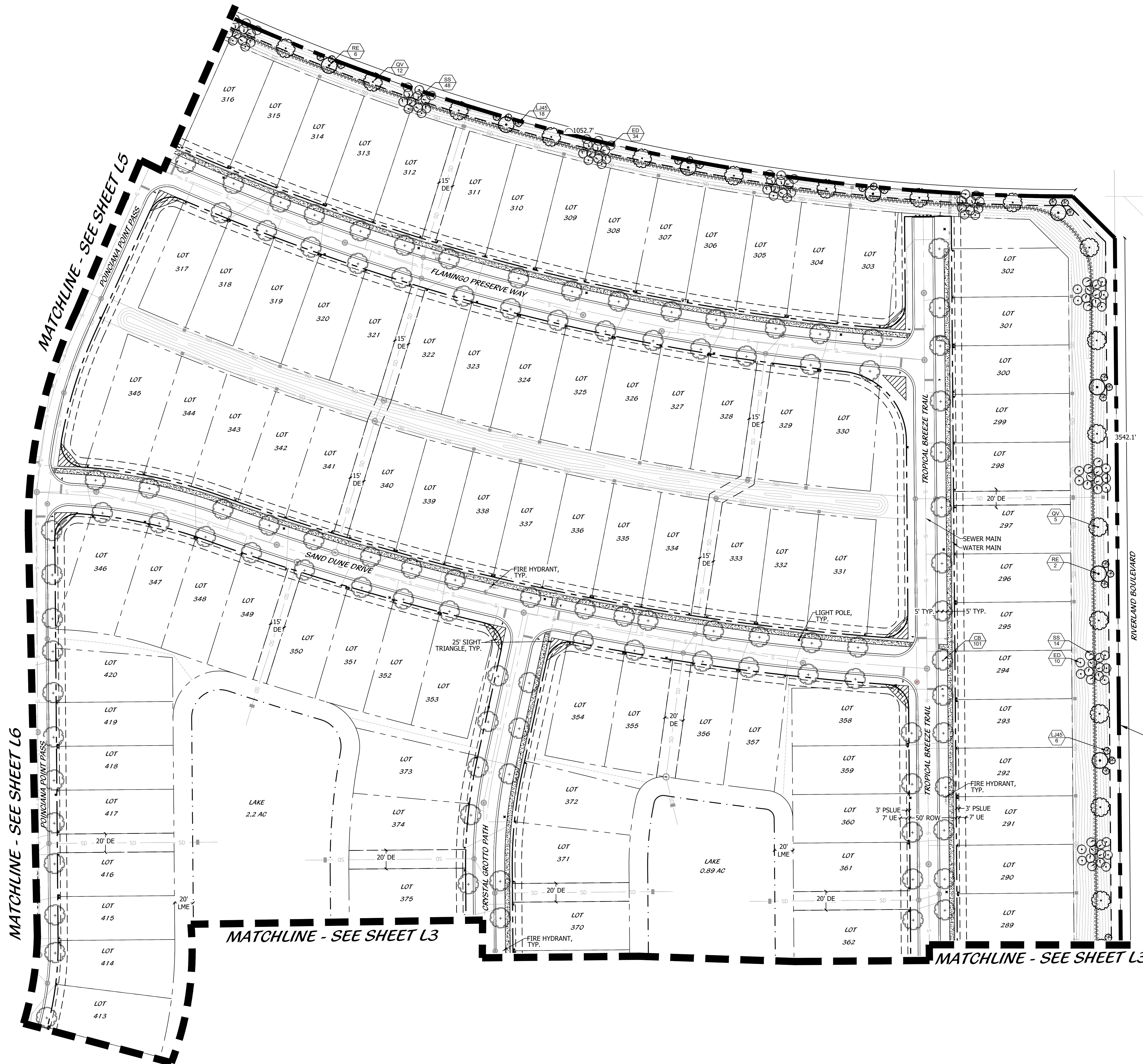
Scale: 1" = 50'-0"



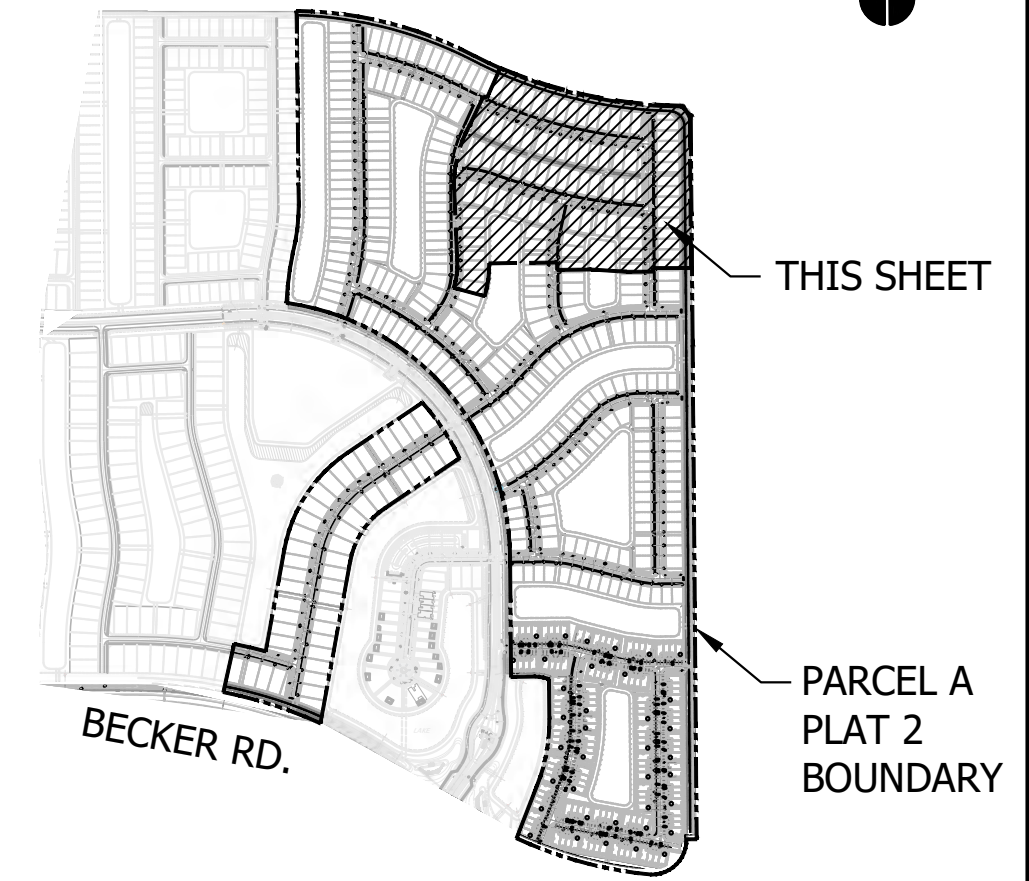
- THIS SHEET

— PARCEL A  
PLAT 2  
BOUNDARY





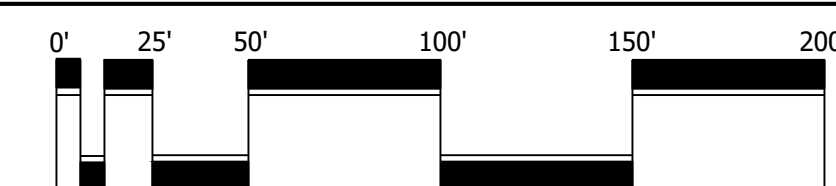
KEY MAP



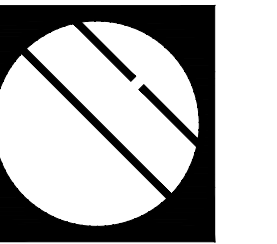
MPUD PARCEL A  
CATALINA PALMS  
Port St. Lucie, Florida

PSLUSD # 11-681-A4  
PSL# P24-195

PLAT 2  
LANDSCAPE PLAN



Scale: 1" = 50'-0"



Cotleur & Hearing

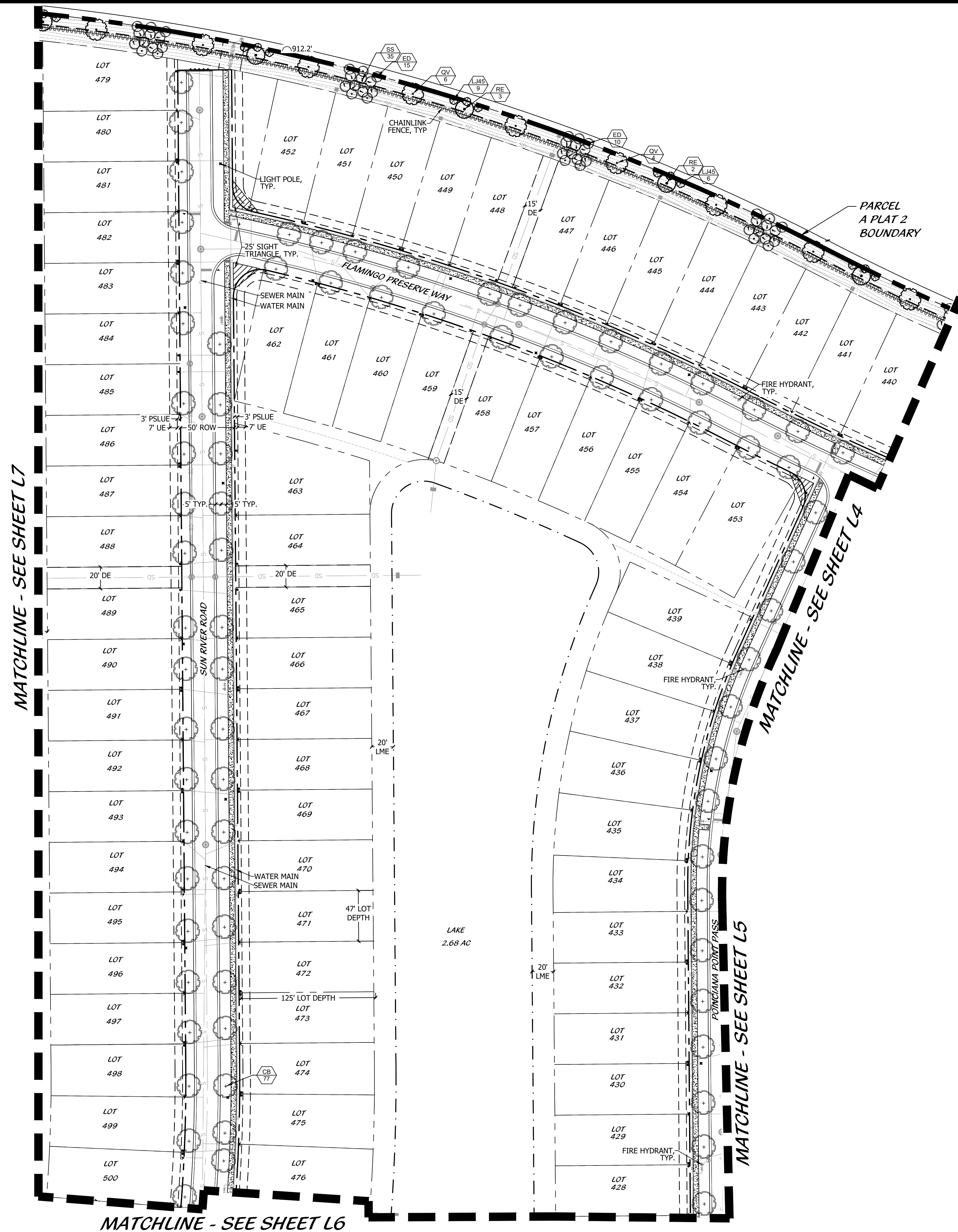
Landscape Architects  
Land Planners  
Environmental Consultants  
1934 Commerce Lane  
Suite 1  
Jupiter, Florida 33458  
561.747.6336 · Fax 747.1377  
www.cotleurhearing.com  
Lic# LC-C000239

DESIGNED	PRP
DRAWN	PRP
APPROVED	LAH
JOB NUMBER	20-0518
DATE	04-11-25
REVISIONS	

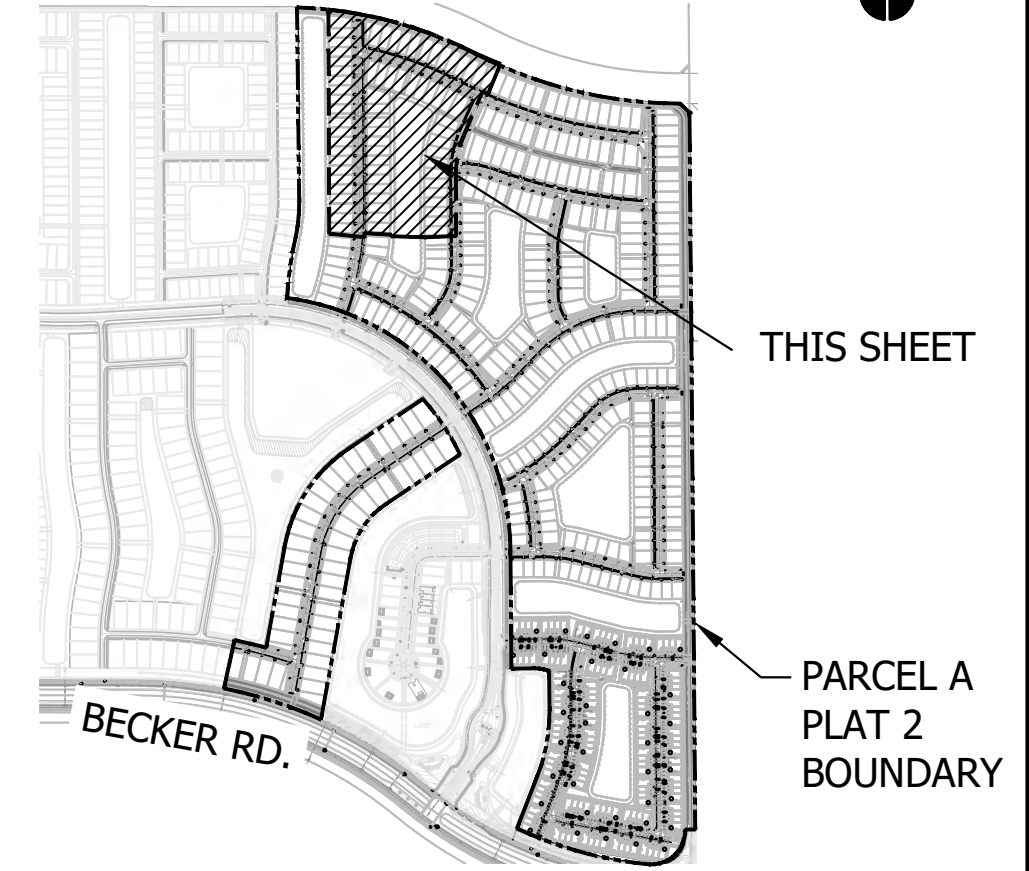
SHEET L4 OF 8

© COTLEUR & HEARING, INC.  
These drawings are the property of the architect and are not to be used for extensions or on other projects except by agreement in writing with the architect. Immediately report any discrepancies to the architect.





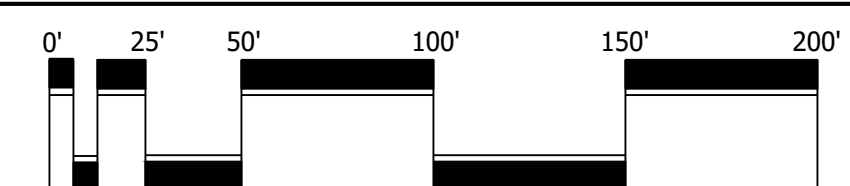
KEY MAP



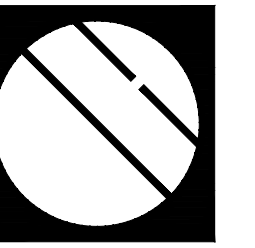
PSLUSD # 11-681-A4  
PSL# P24-195

PLAT 2

LANDSCAPE PLAN



Scale: 1" = 50'-0"



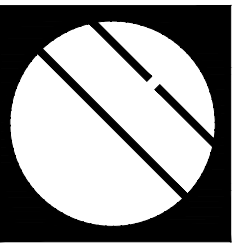
Cotleur & Hearing

Landscape Architects  
Land Planners  
Environmental Consultants  
1934 Commerce Lane  
Suite 1  
Jupiter, Florida 33458  
561.747.6336 · Fax 747.1377  
www.cotleurhearing.com  
Lic# LC-C000239

MPUD PARCEL A  
CATALINA PALMS  
Port St. Lucie, Florida

DESIGNED	PRP
DRAWN	PRP
APPROVED	LAH
JOB NUMBER	20-0518
DATE	04-11-25
REVISIONS	





Cotleur & Hearing

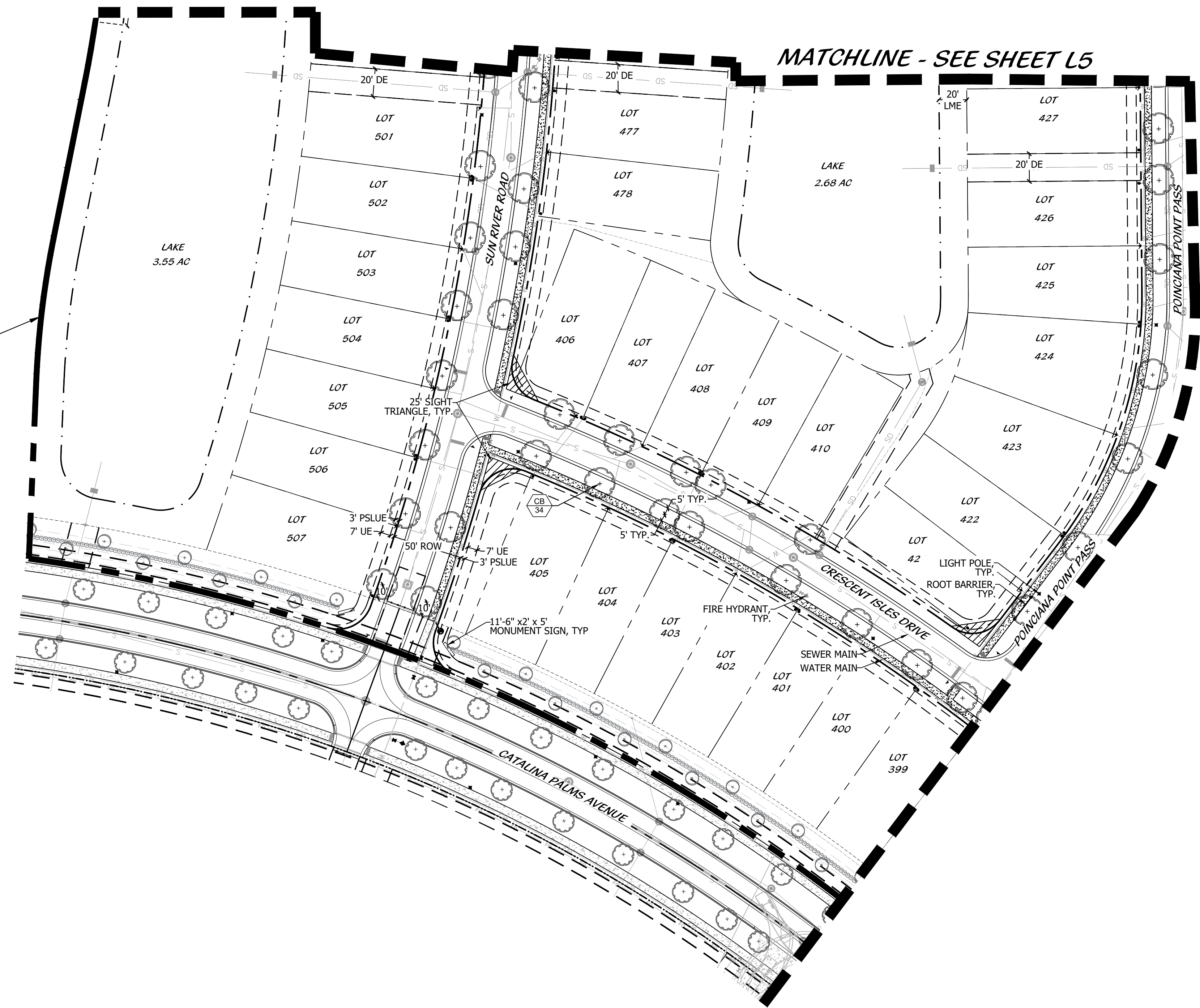
Landscape Architects  
Land Planners  
Environmental Consultants

1934 Commerce Lane  
Suite 1  
Jupiter, Florida 33458  
561.747.6336 · Fax 747.1377  
www.cotleurhearing.com  
Lic# LC-C000239

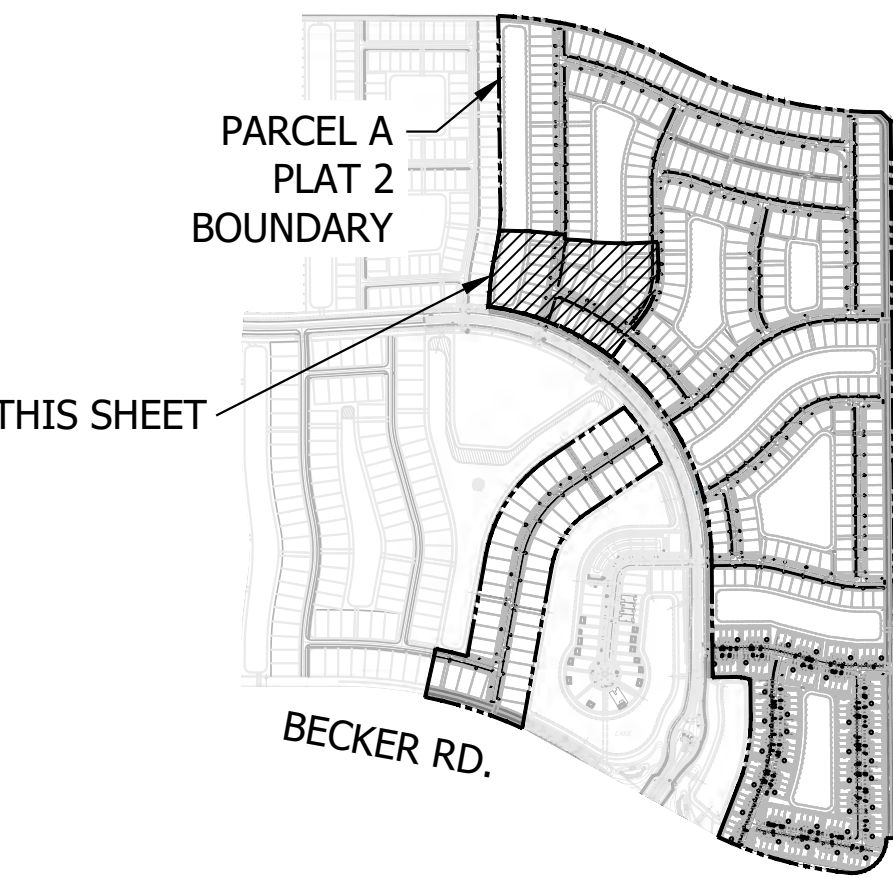
MPUD PARCEL A  
CATALINA PALMS  
Port St. Lucie, Florida

DESIGNED	PRP
DRAWN	PRP
APPROVED	LAH
JOB NUMBER	20-0518
DATE	04-11-25
REVISIONS	

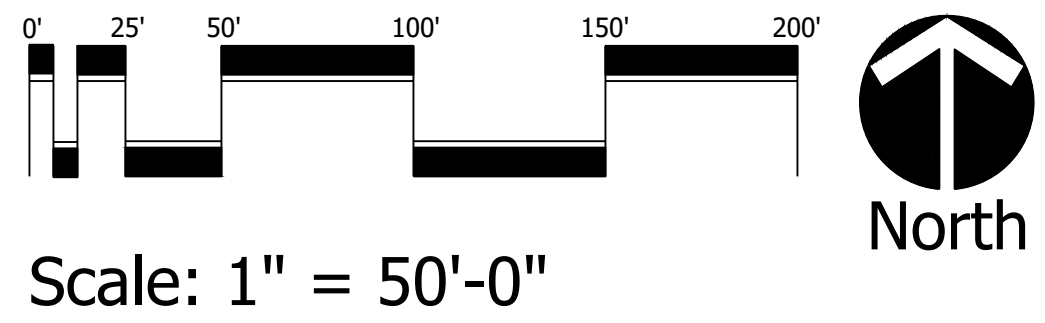
SHEET L6 OF 8  
© COTLEUR & HEARING, INC.  
These drawings are the property of the architect and are not to be used for extensions or on other projects except by agreement in writing with the architect. Immediately report any discrepancies to the architect.



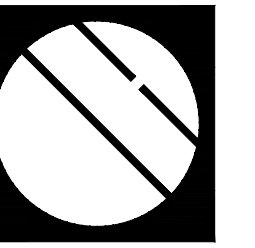
KEY MAP



PSLUSD # 11-681-A4  
PSL# P24-195  
PLAT 2  
LANDSCAPE PLAN



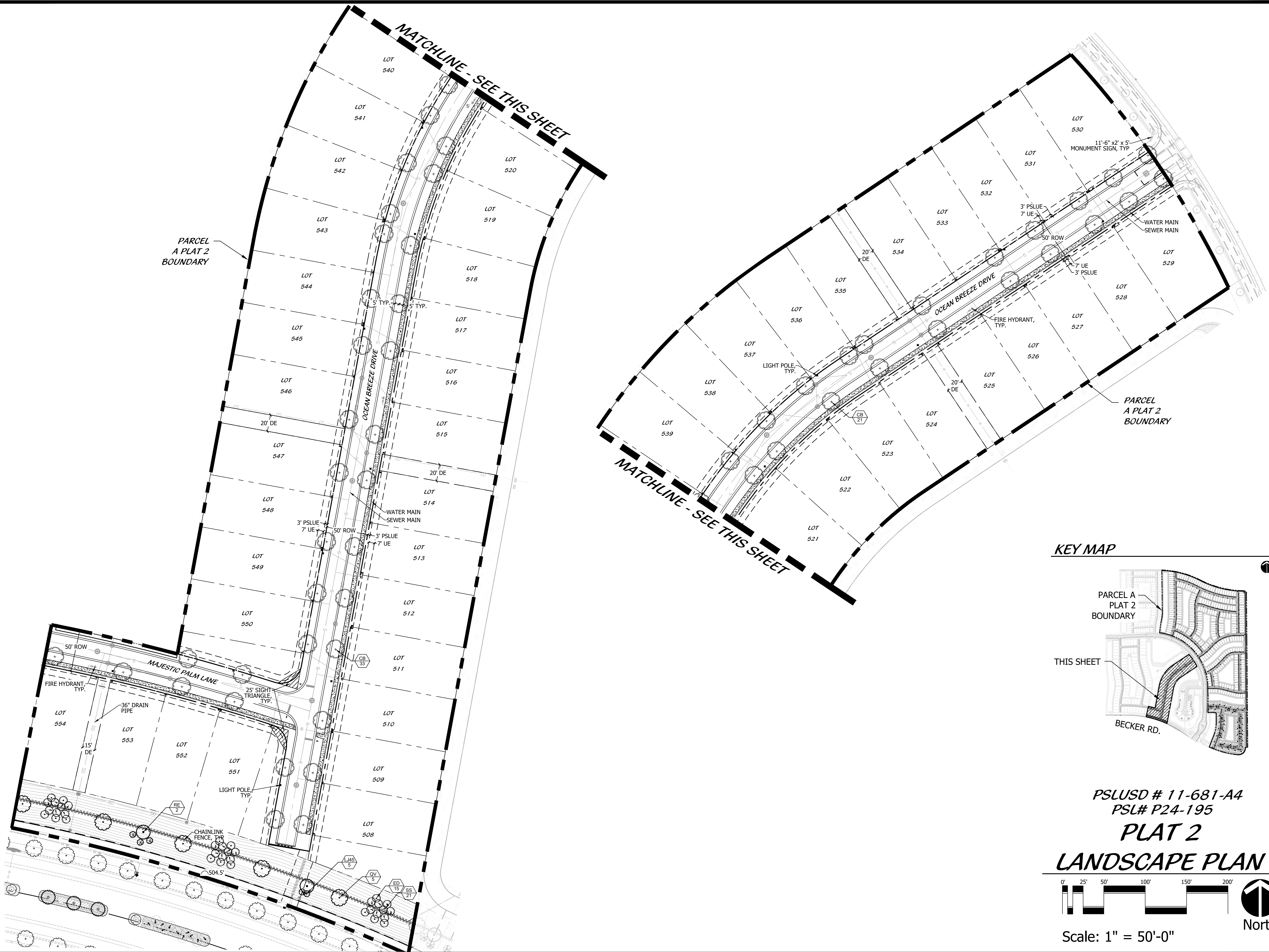




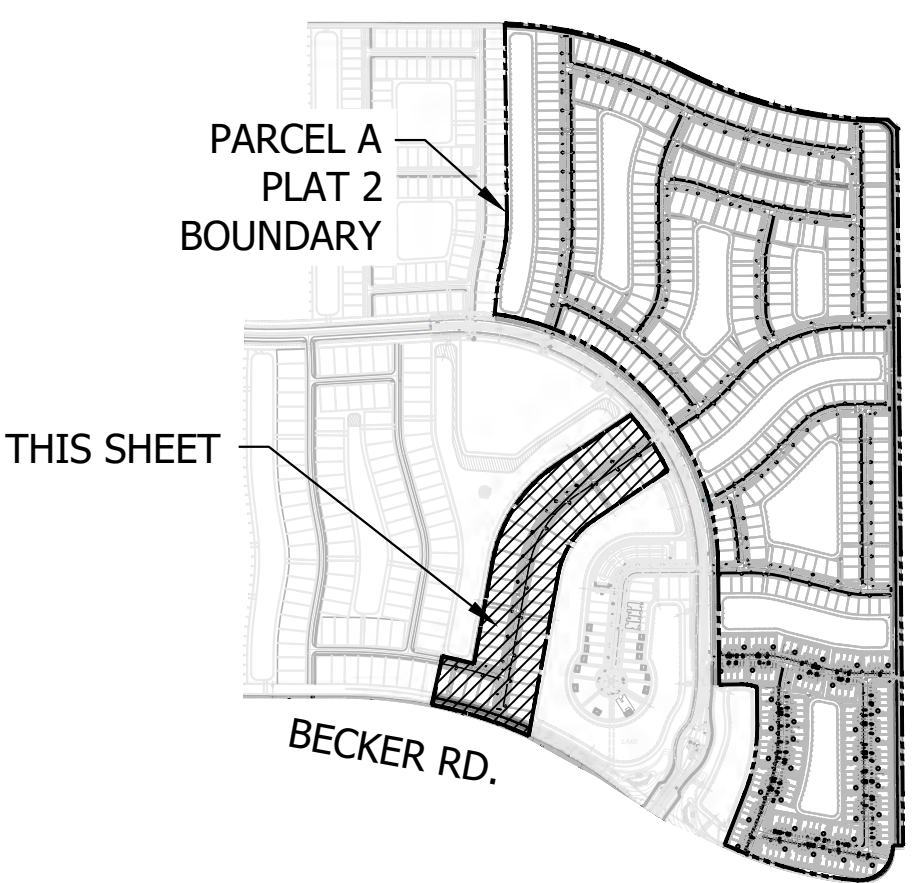
# Cotleur & Hearing

Landscape Architects  
Land Planners  
Environmental Consultants  
1934 Commerce Lane  
Suite 1  
Jupiter, Florida 33458  
561.747.6336 · Fax 747.1377  
www.cotleurhearing.com  
Lic# LC-C000239

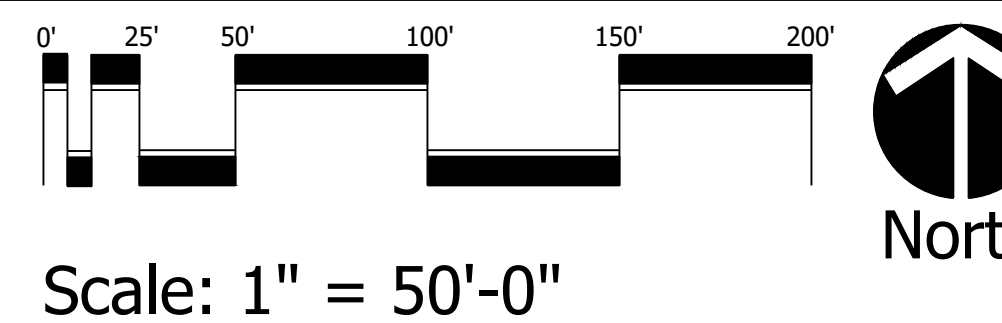
## MPUD PARCEL A CATALINA PALMS Port St. Lucie, Florida



KEY MAP



PSLUSD # 11-681-A4  
PSL# P24-195  
**PLAT 2**  
**LANDSCAPE PLAN**



DESIGNED	PRP
DRAWN	PRP
APPROVED	LAH
JOB NUMBER	20-0518
DATE	04-11-25
REVISIONS	



PLANT LIST

TREES									
CB ◊	562	CALOPHYLLUM BRASILIENSE	BRAZILIAN BEAUTYLEAF	FG	2" CAL	12' - 14' HT	N	FULL CANOPY, FLORIDA FANCY	
ED	154	ELAEOCARPUS DECIPENS	JAPANESE BLUEBERRY TREE	45 GAL	3" CAL	12' OA	N	CONICAL, FULL TO BASE, MATCHED	
LJ45 ◊	85	LIGUSTRUM JAPONICUM	JAPANESE PRIVET	45 GAL	1" EA	6' HT., 6' SPD.	N	MULTI-STEM, LIMB UP 2.5'	
QV ◊	59	QUERCUS VIRGINIANA	SOUTHERN LIVE OAK	65 GAL	5" CAL	16'-18' HT	Y	FLORIDA #1, DOUBLE DUG ROOT BALL	

PALM TREES									
RE	29	ROYSTONEA REGIA	ROYAL PALM	FIELD GROWN	NA	6' G.W.	Y	MATCHED, FULL CANOPY	
SS ◊	216	SABAL PALMETTO	CURVED CABBAGE PALM	B & B	NA	10', 16', OR 22' CT, STGG	Y	STRONG, UNIQUE CURVES, SLICK TRUNKS	

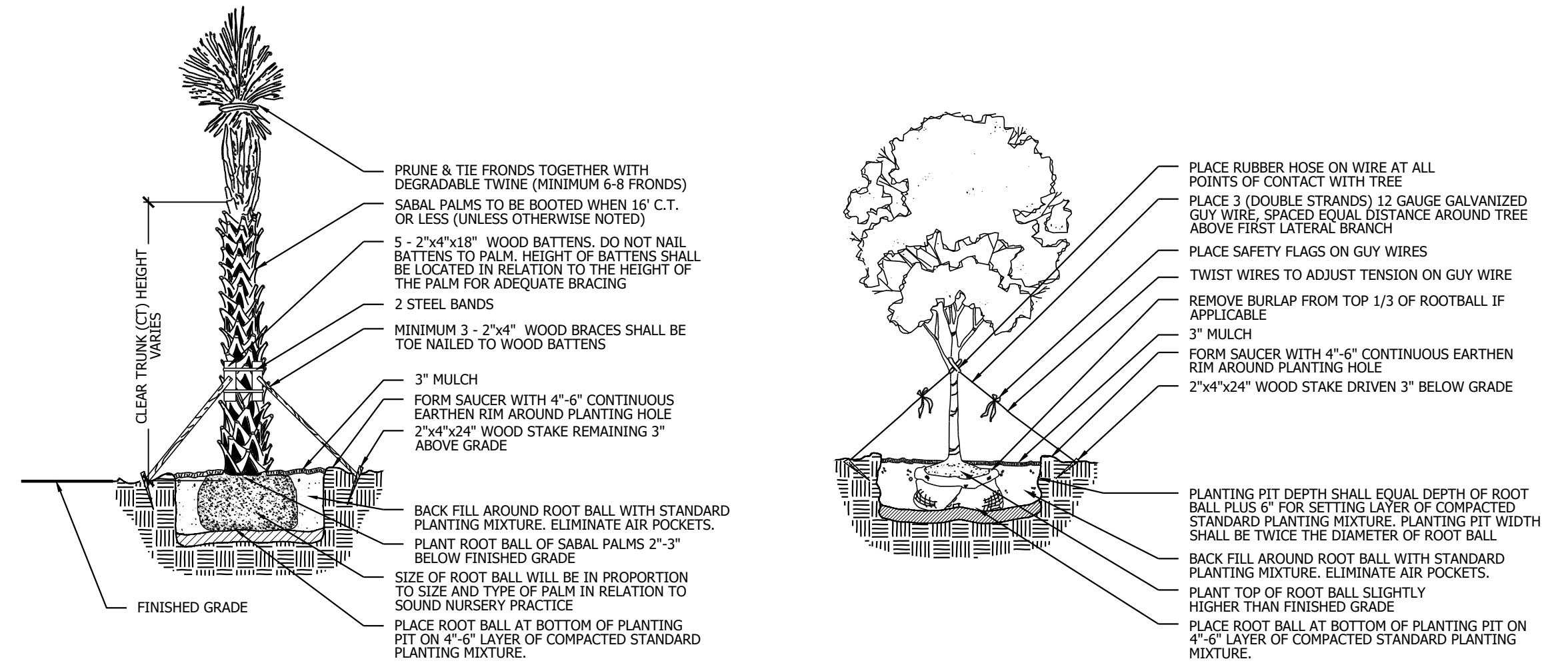
CODE	QTY	BOTANICAL NAME	COMMON NAME	CONT	SIZE	SPACE	NATIVE	REMARKS
SHRUBS								
C13 0	3,006	CHRYSOBALANUS ICACO 'RED TIP'	RED TIP COCO PLUM	3 GAL.	2' X 2'	2' O.C.	Y	FULL & THICK

NOTE: ALL PLANT MATERIAL TO BE FLORIDA NO. 1 OR BETTER

SOD: ST. AUGUSTINE

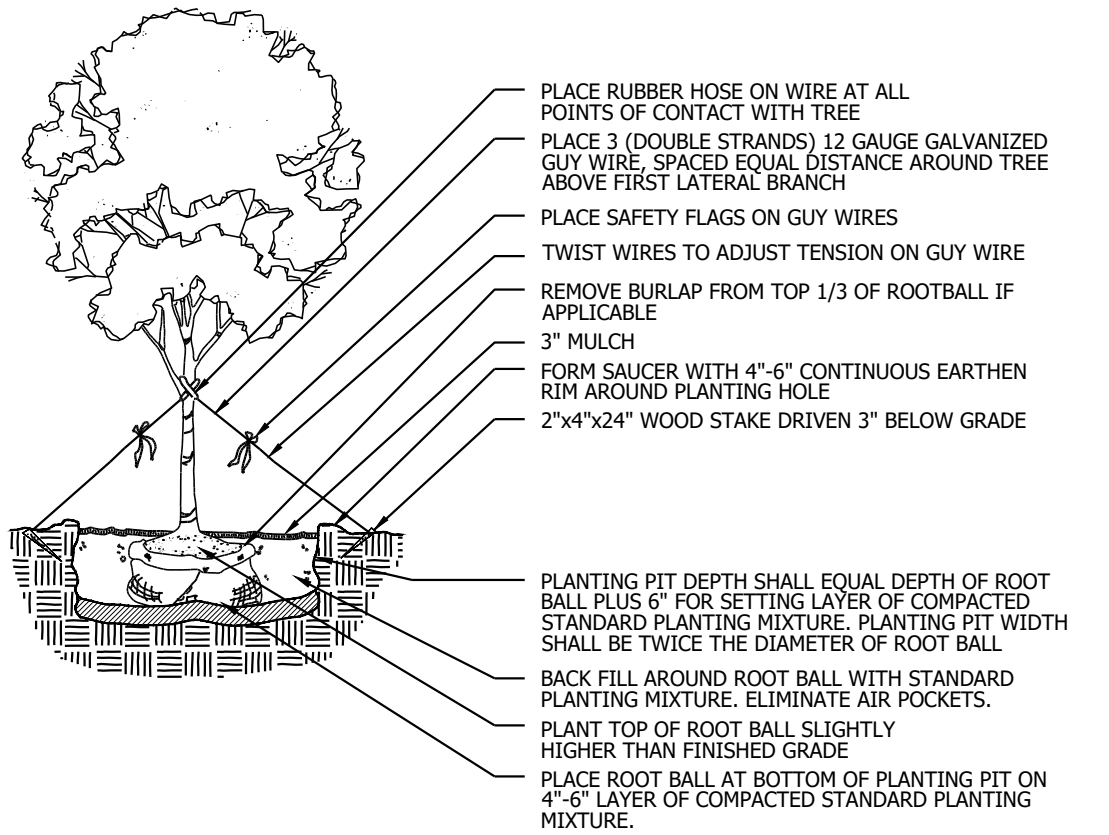
(◊) INDICATES DROUGHT TOLERANT PLANT MATERIAL

PLANTING DETAILS



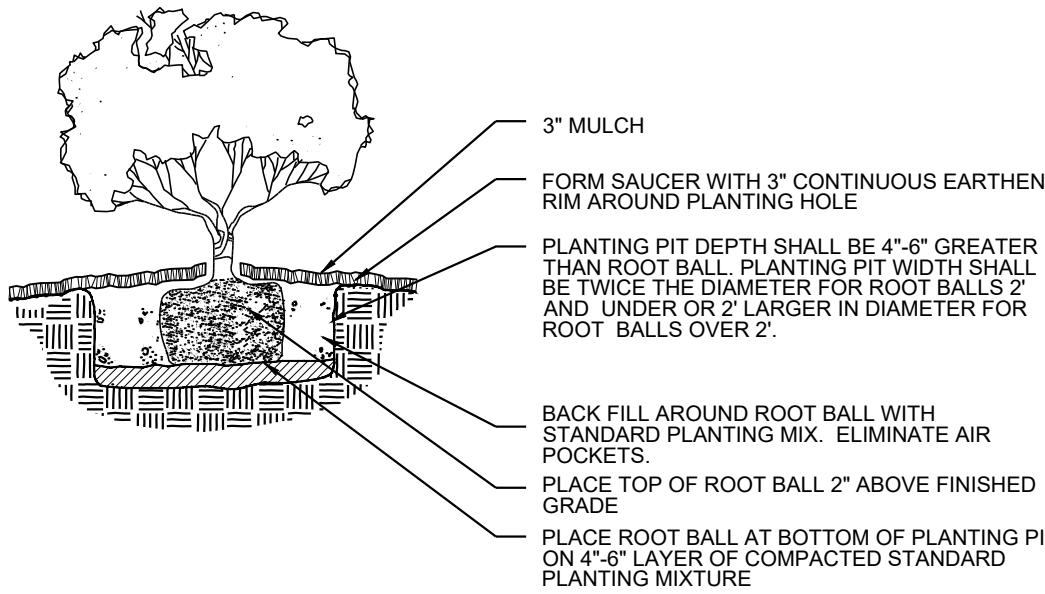
PALM PLANTING DETAIL

NTS



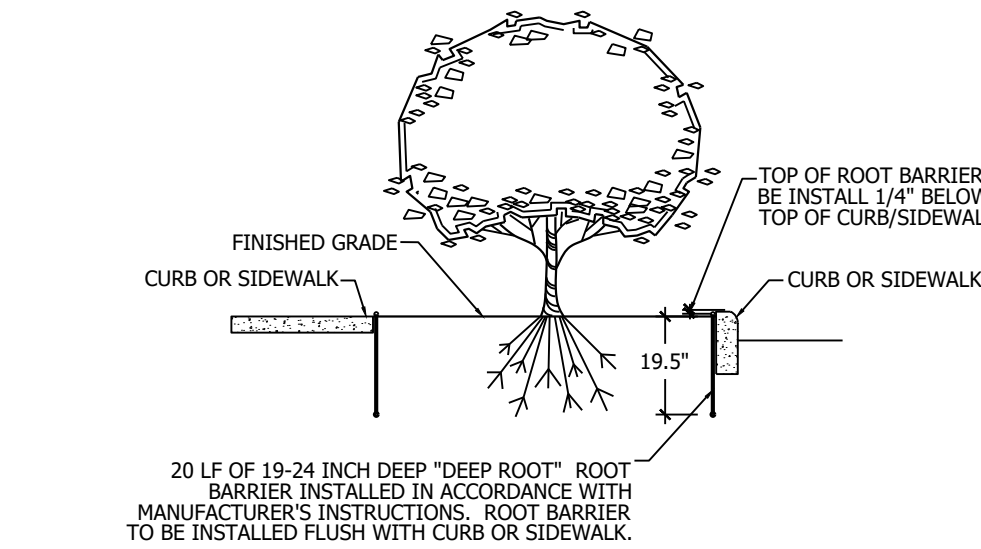
LARGE TREE PLANTING DETAIL

NTS



SHRUB/GROUNDCOVER PLANTING DETAIL

NTS



ROOT BARRIER DETAIL

SECTION VIEW

NTS

ROOT BARRIER DETAIL

PLAN VIEW

NTS

LANDSCAPE SPECIFICATIONS

1. GENERAL LANDSCAPE REQUIREMENTS  
LANDSCAPE CONTRACT WORK INCLUDES, BUT IS NOT LIMITED TO, SOIL PREPARATION, FINE OR FINISH GRADING, FURNISHING AND INSTALLING PLANT MATERIAL, WATERING, STAKING, GUYING AND MULCHING.

PLANT SIZE AND QUALITY

TREES, PALMS, SHRUBS, GROUNDCOVERS:  
PLANT SPECIES AND SIZES SHALL CONFORM TO THOSE INDICATED ON THE DRAWINGS. NOMENCLATURE SHALL CONFORM TO STANDARD PLANT NAMES, 1994 EDITION. ALL NURSERY STOCK SHALL BE IN ACCORDANCE WITH GRADES AND STANDARDS FOR NURSERY PLANTS PARTS 1 & II, LATEST EDITION PUBLISHED BY THE FLORIDA DEPARTMENT OF AGRICULTURE AND CONSUMER SERVICES. UNLESS SPECIFIED OTHERWISE, ALL PLANTS SHALL BE FLORIDA GRADE NUMBER 1 OR BETTER AS DETERMINED BY THE FLORIDA DIVISION OF PLANT INDUSTRY. THIGHTLY KNIT PLANT, SO TRAINED OR FANDED IN ITS DEVELOPMENT THAT FIRST APPEARANCE IS UNQUESTIONABLE AND IT IS OUTSTANDINGLY SUPERIOR IN FORM, NUMBER OF BRANCHES, COMPACTNESS AND SYMMETRY. ALL PLANTS SHALL BE FREELY GUG, SOUND, HEALTHY, VIGOROUS, WELL BRANCHED AND FREE OF DISEASE AND INSECT EGGS AND LARVAE AND SHALL HAVE ADEQUATE ROOT SYSTEMS. TREES AND PALMS FOR PLANTING ROWS SHALL BE UNIFORM IN SIZE AND SHAPE. ALL MATERIALS SHALL BE SUBJECT TO APPROVAL BY THE LANDSCAPE ARCHITECT. THE PLANTS FURNISHED SHALL BE NORMAL FOR THE VARIETY AND FLORIDA NUMBER 1. PLANTS SHALL BE PRUNED PRIOR TO DELIVERY ONLY UPON THE APPROVAL OF THE LANDSCAPE ARCHITECT.

ALL CONTAINER GROWN MATERIAL SHALL BE HEALTHY, VIGOROUS, WELL-ROOTED PLANTS AND ESTABLISHED IN THE CONTAINER IN WHICH THEY ARE SOLD. THE PLANTS SHALL HAVE TOPS OF GOOD QUALITY AND BE IN A HEALTHY GROWING CONDITION.

AN ESTABLISHED CONTAINER GROWN PLANT SHALL BE TRANSPLANTED INTO A CONTAINER AND GROWN IN THAT CONTAINER SUFFICIENTLY LONG ENOUGH FOR THE NEW FIBROUS ROOTS TO HAVE DEVELOPED SO THAT THE ROOT MASS WILL RETAIN ITS SHAPE AND HOLD TOGETHER WHEN REMOVED FROM THE CONTAINER.

MULCH SHALL BE SHREDED CYPRESS MULCH. ALL MULCH IS TO BE APPLIED TO A DEPTH OF 3' EXCEPT FOR THOSE SPECIFIC SITUATIONS SHOWN BELOW IN SECTIONS 2.3 & 4

FERTILIZER IN BACKFILL MIXTURE FOR ALL PLANTS SHALL CONSIST OF MILORGANITE ACTIVATED SLUDGE MIXED WITH THE BACKFILL AT A RATE OF NOT LESS THAN 20 LBS. PER CUBIC YARD.

FERTILIZER FOR TREES AND SHRUBS MAY BE TABLET FORM OR GRANULAR. GRANULAR FERTILIZER SHALL BE UNIFORM IN COMPOSITION, DRY AND FREE-FLOWING. THIS FERTILIZER SHALL BE DELIVERED TO THE SITE IN THE ORIGINAL UNOPENED BAGS BEARING THE MANUFACTURER'S STATEMENT OF ANALYSIS, AND SHALL MEET THE FOLLOWING REQUIREMENTS: 16% NITROGEN, 7% PHOSPHORUS, 12% POTASSIUM, PLUS IRON. TABLET FERTILIZER (AGFORM OR EQUAL) IN 21 GRAM SIZE SHALL MEET THE FOLLOWING REQUIREMENTS: 20% NITROGEN, 10% PHOSPHORUS AND 3% POTASSIUM.

FERTILIZER WILL BE APPLIED AT THE FOLLOWING RATES:

PLANT SIZE	16-7-12	AGFORM TABLETS* (21 GRAM)
1 GAL.	1/4 LB.	1
1 GAL.	1/3 LB.	1
7-15 GAL.	1/2 LB.	1
1 1/2" CALIPER	2 LBS./1" CALIPER	2 PER 1" CALIPER
6" AND LARGER	3 LBS./1" CALIPER	2 PER 1" CALIPER

\*FLORIDA EAST COAST PALM SPECIAL\* SHALL BE APPLIED TO ALL PALMS AT INSTALLATION AT A RATE OF .5 LB. PER INCH OF TRUNK UNLESS OTHERWISE SPECIFIED.

FIELD GROWN TREES AND PALMS PREVIOUSLY ROOT PRUNED SHALL OBTAIN A ROOT BALL WITH SUFFICIENT ROOTS FOR CONTINUED GROWTH WITHOUT RESULTING SHOCK.

CONTRACTOR SHALL NOT MARK OR SCAR TRUNK IN ANY FASHION.

PLANTS SHALL BE WATERED AS NECESSARY OR WITHIN 24 HOURS AFTER NOTIFICATION BY THE LANDSCAPE ARCHITECT.

THE LOCATIONS OF PLANTS, AS SHOWN IN THESE PLANS, ARE APPROXIMATE. THE FINAL LOCATIONS MAY BE ADJUSTED TO ACCOMMODATE UNFORESEEN FIELD CONDITIONS. MAJOR ADJUSTMENTS TO THE LAYOUT ARE TO BE APPROVED BY THE LANDSCAPE ARCHITECT.

ALL PLASTIC FABRIC SHALL BE REMOVED FROM PLANT MATERIAL AT TIME OF INSTALLATION.

ALL TREES MUST BE STAKED AS SHOWN ON THE PLANTING DETAILS WITHIN 24 HOURS OF PLANTING. STAKES TO REMAIN FOR A MINIMUM OF 9 MONTHS, BUT NO LONGER THAN 18 MONTHS. CONTRACTOR IS RESPONSIBLE FOR MAINTENANCE AND REMOVAL OF THE STAKES.

ALL TREES MUST BE PRUNED AS PER LANDSCAPE ARCHITECT'S DIRECTION. SABAL PALMS MAY BE HURRICANE CUT.

ALL SHRUBS, TREES AND GROUND COVER WILL HAVE IMPROVED SOIL, AS PER PLANTING SOIL NOTES. THE SOILS SHALL BE PLACED IN THE HOLE DURING PLANTING. TOP DRESSING ONLY IS NOT ACCEPTABLE.

DO NOT ALLOW AIR POCKETS TO FORM WHEN BACKFILLING. ALL TREES SHALL BE SPIKED IN UTILIZING WATER AND A TREE DAM.

THE LANDSCAPE CONTRACTOR SHALL WATER, MULCH, WEED, PRUNE, AND OTHERWISE MAINTAIN ALL PLANTS, INCLUDING SOD, UNTIL COMPLETION OF CONTRACT OR ACCEPTANCE BY LANDSCAPE ARCHITECT. SETTLED PLANTS SHALL BE RESET TO PROPER GRADE, PLANTING SAUCERS RESTORED, AND DEFECTIVE WORK CORRECTED.

THE LANDSCAPE CONTRACTOR SHALL AT ALL TIMES KEEP THE PREMISES FREE FROM ACCUMULATION OF WASTE MATERIALS OR DEBRIS DURING THE PERFORMANCE OF THE WORK. UPON COMPLETION OF THE WORK, THE CONTRACTOR SHALL PROMPTLY REMOVE ALL WASTE MATERIALS, DEBRIS, UNUSED PLANT MATERIAL, EMPTY PLANT CONTAINERS AND ALL EQUIPMENT FROM THE PROJECT SITE.

UPON COMPLETION OF THE WORK, THE LANDSCAPE CONTRACTOR SHALL NOTIFY THE LANDSCAPE ARCHITECT AND REQUEST A FINAL INSPECTION. ANY ITEMS THAT ARE JUDGED INCOMPLETE OR UNACCEPTABLE BY THE LANDSCAPE ARCHITECT OR OWNER'S REPRESENTATIVE SHALL BE PROMPTLY CORRECTED BY THE LANDSCAPE CONTRACTOR.

THE LANDSCAPE CONTRACTOR SHALL GUARANTEE ALL PLANT MATERIAL FOR A PERIOD OF SIX (6) MONTHS FROM THE DATE OF CONDITIONAL ACCEPTANCE IN WRITING FROM THE LANDSCAPE ARCHITECT. AT THE TIME OF CONDITIONAL ACCEPTANCE, THE SIX (6) MONTH PERIOD SHALL COMMENCE. ANY MATERIALS WHICH HAVE DIED DURING THIS PERIOD SHALL BE PROMPTLY REPLACED WITH SPECIMENS THAT MEET THE MINIMUM REQUIREMENTS CALLED FOR ON THE DRAWINGS. THE LANDSCAPE CONTRACTOR SHALL NOT BE HELD RESPONSIBLE FOR THE DEATH OR DAMAGE RESULTING FROM LIGHTNING, VANDALISM, AND COMBUSTIBLES OR FROM NEGLIGENCE BY THE OWNER. CONTRACTOR SHALL BE RESPONSIBLE FOR WATERING AND OTHERWISE MAINTAINING PLANTS UP TO THE CONDITIONAL ACCEPTANCE PERIOD, UNLESS A WRITTEN AGREEMENT WITH THE LANDSCAPE ARCHITECT PROVIDES FOR A DIFFERENT ARRANGEMENT.

2. PLANTING TREES  
EXCAVATE PIT AS PER PLANTING DETAILS. COMPACT LAYER OF TOPSOIL IN PIT WITH A SLIGHTLY DISHED GRADE TO CENTER.

BACKFILL AROUND BALL WITH TOPSOIL AND SLIGHTLY COMPACT. WATER THOROUGHLY AS LAYERS ARE PLACED TO ELIMINATE VOIDS AND AIR POCKETS. BUILD A 6" HIGH BERM OF TOPSOIL BEYOND EDGE OF EXCAVATION. APPLY 3" (AFTER SETTLEMENT) OF MULCH.

PRUNE TREE TO REMOVE DAMAGED BRANCHES, IMPROVE NATURAL SHAPE AND THIN OUT STRUCTURE. DO NOT REMOVE MORE THAN 15% OF BRANCHES. DO NOT PRUNE BACK TERMINAL LEADER.

GUY AND STAKE TREE IN ACCORDANCE WIT THE STAKING DETAILS IMMEDIATELY AFTER PLANTING.

3. PLANTING SHRUBS

LAYOUT SHRUBS TO CREATE A CONTINUOUS SMOOTH FRONT LINE AND FILL IN BEHIND.

EXCAVATE PIT OR TRENCH TO 2 TIMES THE DIAMETER OF THE BALLS OR CONTAINERS OR 1'-0" WIDER THAN THE SPREAD OF ROOTS AND 3" DEEPER THAN REQUIRED FOR POSITIONING AT PROPER HEIGHT. COMPACT A LAYER OF TOPSOIL IN BOTTOM BEFORE PLACING PLANTS. BACKFILL AROUND PLANTS WITH PLANTING MIXTURE COMPACTED TO ELIMINATE VOIDS AND AIR POCKETS. FORM GRADE SLIGHTLY DISHED AND BERMED AT EDGES OF EXCAVATION. APPLY 2" OF MULCH.

PRUNE SHRUBS TO REMOVE DAMAGED BRANCHES, IMPROVE NATURAL SHAPE AND THIN OUT STRUCTURE. DO NOT REMOVE MORE THAN 15% OF BRANCHES.

4. PLANTING GROUND COVER

LOOSEN SUBGRADE TO DEPTH OF 4" IN AREAS WHERE TOPSOIL HAS BEEN STRIPPED AND SPREAD SMOOTH. SPACE PLANTS AS OTHERWISE INDICATED. DIG HOLES LARGE ENOUGH TO ALLOW SPREADING OF ROOTS. COMPACT BACKFILL TO ELIMINATE VOIDS AND LEAVE GRADE SLIGHTLY DISHED AT EACH PLANT. WATER THOROUGHLY. APPLY 2" OF MULCH OVER ENTIRE PLANTING BED. LIFTING PLANT FOLIAGE ABOVE MULCH. PURPLE QUEEN GROUNDCOVER, IF SPECIFIED, SHALL ONLY RECEIVE 1" OF MULCH.

DURING PERIODS OF HOT SUN AND/OR WIND AT TIME OF PLANTING, PROVIDE PROTECTIVE COVER FOR SEVERAL DAYS OR AS NEEDED.

5. PLANTING LAWNS

SODDING: SOD TYPE SPECIFIED ON PLANT LIST SHALL BE MACHINE STRIPPED MORE THAN 24 HOURS PRIOR TO LAYING.

LOOSEN SUBGRADE TO DEPTH OF 4" AND GRADE WITH TOPSOIL EITHER PROVIDED ON SITE OR IMPORTED TO FINISH DESIGN ELEVATIONS. ROLL PREPARED LAWN SURFACE. WATER THOROUGHLY, BUT DO NOT CREATE MUDDY SOIL CONDITION.

FERTILIZE SOIL AT THE RATE OF APPROXIMATELY 10 LBS. PER 1,000 S.F. SPREAD FERTILIZER OVER THE AREA TO RECEIVE GRASS BY USING AN APPROVED DISTRIBUTION DEVICE CALIBRATED TO DISTRIBUTE THE APPROPRIATE QUANTITY. DO NOT FERTILIZE WHEN WIND VELOCITY EXCEEDS 15 M.P.H. THOROUGHLY MIX FERTILIZER INTO THE TOP 2" OF TOPSOIL.

LAY SOD STRIPS WITH TIGHT JOINTS, DO NOT OVERLAP. STAGGER STRIPS TO OFFSET JOINTS IN ADJACENT COURSES. WORK SIFTED SOIL MIX INTO MINOR CRACKS BETWEEN PIECES OF SOD AND REMOVE EXCESS SOIL DEPOSITS FROM SODDED AREAS. SOD ON SLOPES GREATER THAN 3:1 SHALL BE STAKED IN PLACE. ROLL OR STAMP LIGHTLY AND WATER THOROUGHLY WITH A FINE SPRAY IMMEDIATELY AFTER PLANTING.

6. MISCELLANEOUS LANDSCAPE WORK

LANDSCAPE MAINTENANCE

MAINTAIN LANDSCAPE WORK UNTIL FINAL ACCEPTANCE IS ISSUED BY THE OWNER'S REPRESENTATIVE. INCLUDE WATERING, WEEDING, CULTIVATING, RESTORATION OF GRADE, MOWING AND TRIMMING GRASS, PRUNING TREES AND SHRUBS, PROTECTION FROM INSECTS AND DISEASES, FERTILIZING AND SIMILAR OPERATIONS AS NEEDED TO INSURE NORMAL GROWTH AND GOOD HEALTH FOR LIVE PLANT MATERIAL.

PLANT MATERIAL SUBSTITUTION

NO SUBSTITUTION OF PLANT MATERIAL, TYPE OR SIZES WILL BE PERMITTED WITHOUT AUTHORIZATION FROM THE LANDSCAPE ARCHITECT.

PLANTING BED PREPARATION

ALL PLANTING BEDS SHALL BE PROPERLY PREPARED PRIOR TO THE COMMENCEMENT OF ANY PLANTING. PLANTING AREAS, INCLUDING LAWNS SHALL BE FREE OF ALL WEEDS AND NUISANCE VEGETATION. IF TORPEDO GRASS (PANICUM REPENS) IS PRESENT OR ENCOUNTERED DURING PLANTING, THE LANDSCAPE CONTRACTOR SHALL STOP ALL PLANTING UNTIL IT CAN BE DEMONSTRATED THAT IT HAS BEEN COMPLETELY REMOVED OR ERADICATED. THERE SHALL BE NO EXCEPTIONS TO THIS PROVISION.

ALL LANDSCAPE ISLANDS AND BEDS WILL BE FREE OF SHELL ROCK AND CONSTRUCTION DEBRIS AND WILL BE EXCAVATED TO A DEPTH OF 30 INCHES OR TO CLEAN, NATIVE SOIL AND FILLED WITH THE SPECIFIED BACKFILL MIXTURE.

LANDSCAPE NOTES

ALL LANDSCAPING AND SITE IMPROVEMENTS SHALL CONFORM TO ALL APPLICABLE PROVISIONS OF THE CITY OF PORT ST. LUCIE'S CHAPTER 153, LANDSCAPE AND LAND CLEARING CODE, CURRENT ADDITION AND ANY OTHER APPLICABLE CITY REGULATIONS.

THE LANDSCAPE CONTRACTOR SHALL NOT MAKE ANY SUBSTITUTIONS OR CHANGES WITHOUT THE AUTHORIZATION OF THE OWNER AND THE LANDSCAPE ARCHITECT.

THE LANDSCAPE CONTRACTOR SHALL REVIEW THE PROJECT DRAINAGE PLANS AND VERIFY THE LOCATION OF ALL UNDERGROUND UTILITIES PRIOR TO CONSTRUCTION AND AVOID ALL CONFLICTS.

THE LANDSCAPE CONTRACTOR BE RESPONSIBLE FOR ALL PERMITS RELATING TO HIS/HER WORK.

ALL LANDSCAPE PLANTED IN THE RIGHT-OF-WAY AND ON PRIVATE PROPERTY SHALL BE LOCATED SO THAT NO CONFLICT OCCURS WITH VEHICULAR SIGHT DISTANCES AT INTERSECTIONS AND AT DESIGNATED PEDESTRIAN CROSSWALKS.

NO FENCE, WALL, HEDGE, OR SHRUB PLANTING WHICH OBSTRUCTS SIGHT LINES AND ELEVATIONS BETWEEN TWO (2) AND SIX (6) FEET ABOVE THE CROWN OF THE ROAD SHALL BE PLACED OR PERMITTED TO REMAIN ON ANY CORNER LOT IN ANY ZONING DISTRICT WITHIN THE TRIANGULAR AREA FORMED BY THE STREET PROPERTY LINES AND A LINE CONNECTING THEM AT POINTS TWENTY-FIVE (25) FEET FROM THE INTERSECTION OF THE STREET LINES, OR IN THE CASE OF A ROUNDED PROPERTY CORNER FROM THE INTERSECTION OF THE STREET PROPERTY LINES EXTENDED. THE SAME SIGHT LINE LIMITATIONS SHALL APPLY ON ANY LOT WITHIN TEN (10) FEET FROM THE EDGE OF A DRIVEWAY OR ALLEY. NO TREE SHALL BE PERMITTED TO REMAIN WITHIN THE ABOVE DESCRIBED LIMITS OF INTERSECTIONS UNLESS THE POLAGE LINE IS MAINTAINED AT OR ABOVE SIX (6) FEET ABOVE THE ROADWAY INTERSECTION ELEVATION TO PREVENT OBSTRUCTION OF SIGHT LINES.

ALL LANDSCAPING SHALL BE LOCATED IN THE RIGHT-OF-WAY AND ON PRIVATE PROPERTY SO THAT NO CONFLICT OCCURS WITH DESIGNATED CITY DRAINAGE AND / OR UTILITY EASEMENTS, OVERHEAD AND UNDERGROUND UTILITY LINES AND OR UTILITY STRUCTURES. NO TREE ARE ALLOWED IN UTILITY EASEMENTS OR CLOSER THAN TEN FEET TO ANY CITY UTILITY LINES.

TREES AT ENTRANCEWAYS SHALL BE LIMBED UP TO MAXIMIZE SITE DISTANCE. CLEAR VISIBILITY SHALL BE MAINTAINED BETWEEN 24" AND 8". TREES SHALL BE POSITIONED TO AVOID CONFLICTS WITH SITE LIGHTING.

PLANTING ISLANDS WITHIN AND ADJACENT TO PARKING AREAS SHALL BE FREE OF LINE ROCK AND OTHER FOREIGN MATERIALS TO A DEPTH OF 30". IF NECESSARY, RECYCLED PLANTING SOIL MIXTURE SHOULD BE USED TO REPLACE UNSUITABLE SOIL, WHICH IS EXCAVATED.

THE SURFACE OF ALL AREAS TO RECEIVE LANDSCAPING WILL BE FINELY GRADED AND SO DO DIPS AND DEPRESSIONS ARE REMOVED AND POSITIVE DRAINAGE IS ACHIEVED. THE FINISHED GRADE OF SOD AND MULCH AREAS SHALL BE SET SO THAT MULCH WASHOUTS DO NOT OCCUR AND THERE IS A SMOOTH TRANSITION FROM PAVED SURFACES TO ADJACENT LAWN AREAS.

ALL TREES, SHRUBS AND GROUNDCOVER BEDS ARE REQUIRED TO BE MULCHED WITH A 3" MIN. THICK LAYER OF MULCH. TREES LOCATED IN TURF AREAS ARE REQUIRED TO HAVE A 3" THICK MULCHED WATERING RING PROVIDED AROUND THE TRUNK. THE TREE RING IS REQUIRED TO BE A MINIMUM DIAMETER OF 3' AROUND SMALL TREES AND 5' AROUND LARGE TREES, TO FACILITATE MOWING. MULCH SHALL BE KEPT THREE FEET AWAY FROM THE TRUNK.

ALL TREE STAKING MATERIALS SHALL BE LOCATED WITHIN MULCH BEDS AND OR RINGS.

ALL AREAS SHALL BE FULLY IRRIGATED IN ACCORDANCE WITH THE REQUIREMENTS OF THE CITY OF PORT ST. LUCIE. IRRIGATION SHOP DRAWINGS SHALL BE SUBMITTED TO THE OWNER AND LANDSCAPE ARCHITECT FOR APPROVAL PRIOR TO CONSTRUCTION. THE IRRIGATION SYSTEM SHALL BE DESIGNED TO PROVIDE 100% OVERLAP COVERAGE TO ALL LANDSCAPE AND SOD AREAS.

THE IRRIGATION WATER SOURCE SHALL BE WELL WATER OR SUCTION FROM AN ONSITE STORMWATER MANAGEMENT AREA. THE IRRIGATION SYSTEM SHALL BE EQUIPPED WITH A RAIN SENSOR/CUT OFF SWITCH IN ACCORDANCE WITH STATE AND LOCAL REQUIREMENTS.

ALL ABOVE GROUND UTILITIES I.E. TRANSFORMERS, SWITCH BOXES, AIR CONDITIONER CONDENSERS, SHALL BE FULLY SCREENED WITH LANDSCAPING WHICH MUST EXTEND ONE FOOT HIGHER THAN THE TALLEST POINT OF SAID EQUIPMENT AT TIME OF PLANTING.

NO LANDSCAPING SHALL BE LOCATED WITHIN 10' OF A CITY LINE OR APPURTENANCE. ALL OTHER UTILITIES SHALL BE A MINIMUM OF 5' HORIZONTAL SEPARATION FROM CITY UTILITY MAINS FOR PARALLEL INSTALLATIONS AND A MINIMUM OF 18" BELOW CITY UTILITY MAINS. (ALL MEASUREMENTS ARE TAKEN FROM OUTSIDE TO OUTSIDE)

NO LANDSCAPING SHALL BE PLACED IN A MANNER THAT WOULD CREATE CONFLICTS WITH THE INTENDED OPERATION AND MAINTENANCE OF ANY EXISTING UTILITY.

ST. AUGUSTINE SOD WILL BE UTILIZED FOR ALL TURF AREAS, EXCEPT AS NOTED. BAHIA SOD WILL BE UTILIZED IN DRY RETENTION AREAS AND IN AREAS OF EXISTING TREES TO REMAIN.

ALL TREES PLANTED UNDER OR ADJACENT TO FPLR POWERLINES WILL COMPLY WITH THE FPLR "RIGHT TREE, RIGHT PLACE" GUIDELINES.

NO LANDSCAPING SHALL BE PLANTED IN A MANNER THAT WOULD ADVERSELY AFFECT UTILITY EASEMENTS. LANDSCAPING SHALL BE IN COMPLIANCE WITH CHAPTER 154 OF THE CITY OF PORT ST. LUCIE CODES AND ORDINANCES. PSLUSD TECHNICAL SPECIFICATIONS AND POLICIES.

ALL LANDSCAPING WITHIN CITY UTILITY EASEMENTS SHALL COMPLY WITH PSLUSD TECHNICAL SPECIFICATIONS, POLICIES, AND CODES.  
2. ALL LANDSCAPING SHALL MEET THE LATEST PSLUSD LANDSCAPE POLICY AND SHALL NOT BE PLACED IN A MANNER THAT WOULD CREATE CONFLICTS WITH THE INTENDED OPERATION AND MAINTENANCE OF ANY EXISTING UTILITY.

3. TREES SHALL NOT BE PLANTED WITHIN 10' OF ANY PSLUSD UNDERGROUND INFRASTRUCTURE.  
4. NO LANDSCAPING OTHER THAN SOD GRASSES MAY BE PLANTED WITHIN 5' OF A PSLUSD APPURTENANCE SUCH AS A WATER METER ASSEMBLY, BACKFLOW DEVICE, FIRE HYDRANT, OR SEWER CLEANOUT, ETC.

PSLUSD LANDSCAPE NOTES:  
1. NO TREE OR OTHER INTRUSIVE ROOT PLANTINGS SHALL BE LOCATED WITHIN 10' OF A CITY UTILITY MAIN. ALL OTHER UTILITIES SHALL BE A MINIMUM OF 5' HORIZONTAL SEPARATION FROM CITY UTILITY MAINS FOR PARALLEL INSTALLATIONS AND A MINIMUM OF 18" BELOW CITY UTILITY MAINS. (ALL MEASUREMENTS ARE FROM OUTSIDE TO OUTSIDE).

2. NO LANDSCAPING SHALL BE PLACED IN A MANNER THAT WOULD CREATE CONFLICTS WITH THE INTENDED OPERATION AND MAINTENANCE OF ANY EXISTING OR PROPOSED WATERWATERWATER UTILITY LINES.

3. ALL LANDSCAPE MATERIAL TO BE FL NO. 1.

4. ALL LANDSCAPING MEETS FDOT CLEAR ZONE AND SIGHT DISTANCE CRITERIA.

5. NO LANDSCAPING SHALL BE PLANTED IN SUCH A MANNER AS TO ADVERSELY AFFECT UTILITY INSTALLATION, OPERATION AND MAINTENANCE.

6. BERMS AND STRUCTURAL LANDSCAPE FEATURES SUCH AS ROCK, FOUNDATIONS, SCULPTURE, DECORATIVE WALL AND TREE WELLS AND GENERALLY NOT ALLOWED IN PSLUSD EASEMENTS, BUT MAY BE REVIEWED ON A CASE BY CASE BASIS.

7. ALL MEASUREMENTS ARE FROM OUTSIDE TO OUTSIDE, NOT CENTERLINE TO CENTERLINE. EXAMPLE: OUTSIDE OF PIPE TO NEAREST POINT ON TREE TRUNK.

8. TREES SHALL NOT BE PLANTED WITHIN 10 FEET OF ANY PSLUSD MAINS OR APPURTENANCES.

9. NO LANDSCAPING OTHER THAN SOD GRASSES MAY BE PLANTED WITHIN A 5' RADIUS MAINTENANCE AREA OF ANY PSLUSD APPURTENANCE SUCH AS WATER METERS, BACKFLOW DEVICES, FIRE HYDRANTS, SANITARY SEWER CLEANOUTS, AND MANHOLES, AIR RELEASE VALVES, ETC.

10. ALL LANDSCAPING WITHIN PORT ST. LUCIE UTILITY SYSTEMS DEPARTMENT (PSLUSD) UTILITY EASEMENTS SHALL COMPLY WITH PSLUSD TECHNICAL SPECIFICATIONS, POLICIES, AND CODES. TREES SHALL NOT BE PLANTED WITHIN TEN (10) FEET OF ANY PSLUSD UNDERGROUND INFRASTRUCTURE.

LANDSCAPE IRRIGATION NOTES:  
A. ALL AREAS TO RECEIVE 100% IRRIGATION COVERAGE  
B. ALL ZONES TO BE AUTOMATICALLY CONTROLLED  
C. CLOCKS TO HAVE AUTOMATIC "RAIN SENSORS"  
D. WATER SOURCES (WATER SOURCES) MAY BE POTABLE OR WELL AND SHALL BE DETERMINED AT TIME OF BUILDING PERMIT APPLICATION  
E. THE IRRIGATION SYSTEM SHALL BE DESIGNED TO ACCEPT RECLAIMED WASTEWATER ONCE IT BECOMES AVAILABLE TO THE PROPERTY.

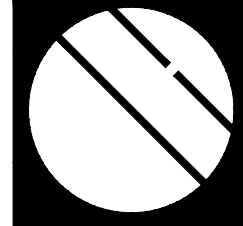
NO LIGHT POLE OR ASSOCIATED CONDUIT SHALL BE LOCATED WITHIN 5' OF A PSLUSD FACILITY.

GENERAL NOTES:

1. THE PROPERTY OWNER, CONTRACTOR, AND AUTHORIZED REPRESENTATIVES SHALL PROVIDE PICKUP, REMOVAL, AND DISPOSAL OF LITTER WITHIN THE PROJECT LIMITS AND SHALL BE RESPONSIBLE FOR MAINTENANCE OF THE AREA FROM THE EDGE OF PAVEMENT TO THE PROPERTY LINE WITHIN THE CITY'S RIGHT-OF-WAY IN ACCORDANCE WITH CITY CODE, SECTION 41.08(G).

PSLUSD # 11-681-A4  
PSL# P24-195

PARCEL A PLAT 2



Cotleur & Hearing

Landscape Architects  
Land Planners  
Environmental Consultants

1934 Commerce Lane  
Suite 1  
Jupiter, Florida 33458  
561.747.6336 • Fax 747.1377

.....  
Lic# LC-C000239

MPUD PARCEL A  
CATALINA PALMS  
Port St. Lucie, Florida

DESIGNED \_\_\_\_\_ PRP  
DRAWN \_\_\_\_\_ PRP  
APPROVED \_\_\_\_\_ LAH  
JOB NUMBER \_\_\_\_\_ 20-0518  
DATE \_\_\_\_\_ 04-11-25  
REVISIONS \_\_\_\_\_

SHEET L8 OF 8

© COTLEUR & HEARING, INC.  
These drawings are the property of the architect and are not to be used for extensions or on other projects except by agreement in writing with the architect. Immediately report any discrepancies to the architect.