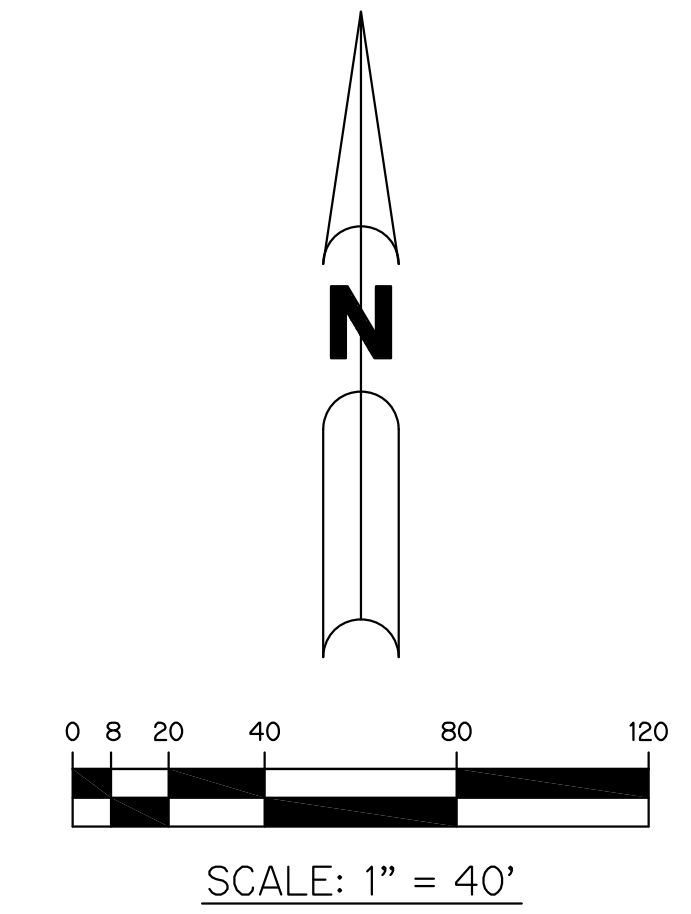


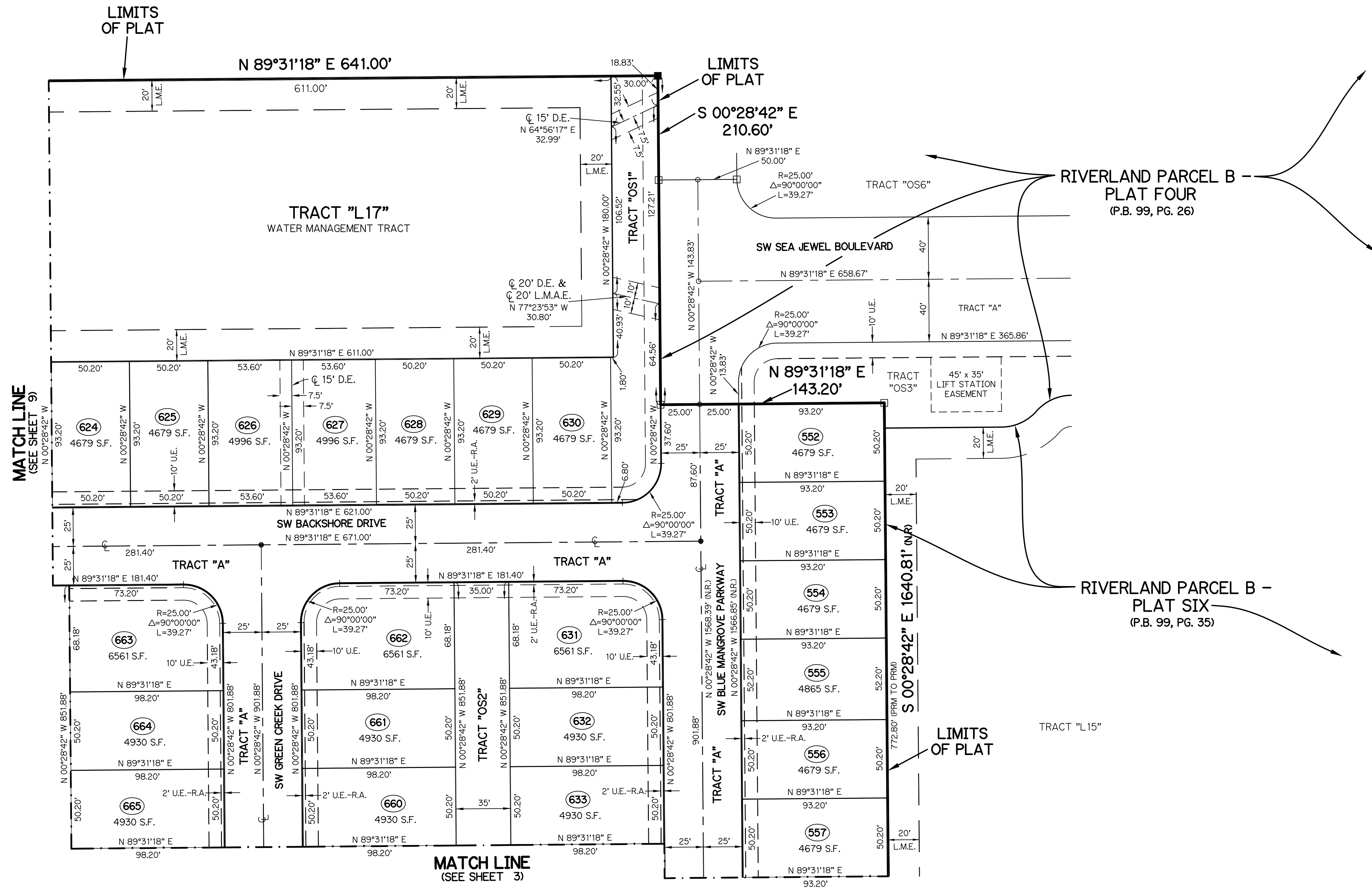
RIVERLAND PARCEL B - PLAT SEVEN

A PARCEL OF LAND LYING IN SECTION 21, TOWNSHIP 37 SOUTH,
RANGE 39 EAST, CITY OF PORT ST. LUCIE, ST. LUCIE COUNTY, FLORIDA

SHEET 2 OF 11



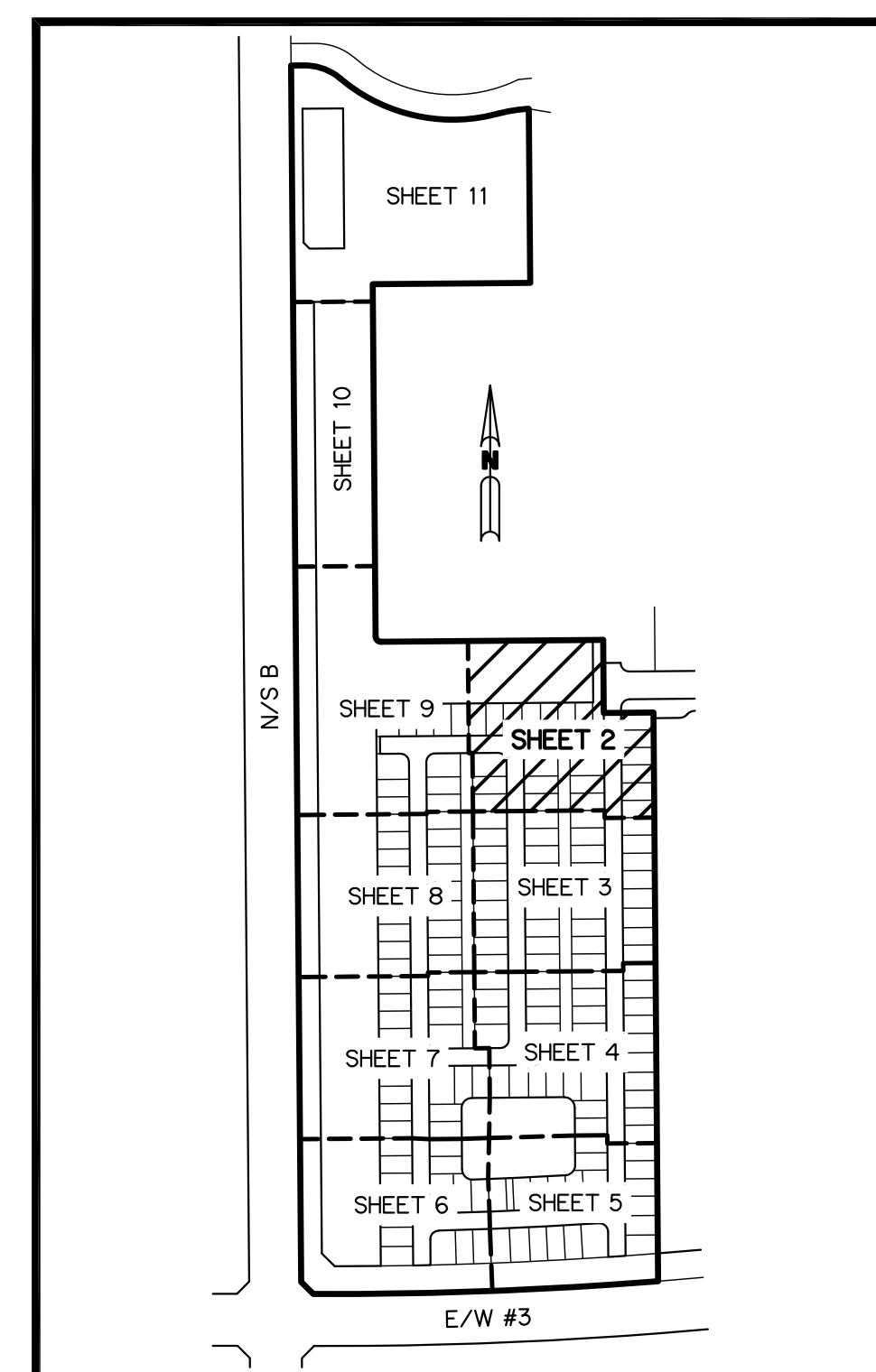
UNPLATTED
SECTION 21,
TOWNSHIP 37 SOUTH,
RANGE 39 EAST



RIVERLAND PARCEL B -
PLAT FOUR
(P.B. 99, PG. 26)

RIVERLAND PARCEL B -
PLAT SIX
(P.B. 99, PG. 35)

- LEGEND:**
- - SET PERMANENT REFERENCE MONUMENT
5/8" IRON ROD WITH 1.5" CAP
STAMPED L.B. #7741
 - - FOUND PERMANENT REFERENCE MONUMENT
5/8" IRON ROD WITH 1.5" CAP
STAMPED L.B. #7741
 - - SET PERMANENT CONTROL POINT
NAIL WITH 1.25" DISK STAMPED L.B. #7741
 - - FOUND PERMANENT CONTROL POINT
NAIL WITH 1.25" DISK STAMPED L.B. #7741
 - △ - DELTA ANGLE
 - B.E. - BUFFER EASEMENT
 - CB - CHORD BEARING
 - CH - CHORD DISTANCE
 - CL - CENTERLINE
 - D.B. - DEED BOOK
 - D.E. - DRAINAGE EASEMENT
 - D.S.E. - DRAINAGE SWALE EASEMENT
 - L - ARC LENGTH
 - L.A.E. - LIMITED ACCESS EASEMENT
 - L.E. - LANDSCAPE EASEMENT
 - L.M.A.E. - LAKE MAINTENANCE ACCESS EASEMENT
 - L.M.E. - LAKE MAINTENANCE EASEMENT
 - N.R. - NOT RADIAL
 - N.R.T.R. - NOT RADIAL TO REAR
 - N.T.S. - NOT TO SCALE
 - O.R.B. - OFFICIAL RECORD BOOK
 - O.E. - MAINTENANCE & ROOF OVERHANG EASEMENT
 - P.B. - PLAT BOOK
 - P.C.P. - PERMANENT CONTROL POINT
 - PGS. - PAGES
 - P.O.B. - POINT OF BEGINNING
 - P.O.C. - POINT OF COMMENCEMENT
 - P.S.L.U.E. - PORT ST. LUCIE UTILITY EASEMENT
 - P.S.M. - PROFESSIONAL SURVEYOR AND MAPPER
 - R - RADIUS
 - R/W - RIGHT-OF-WAY
 - S.F. - SQUARE FEET
 - S.T. - SURVEY TIE
 - U.E. - UTILITY EASEMENT
 - RAD - RADIAL LINE
 - U.E.-R.A. - UTILITY EASEMENT-RESTRICTED AREA

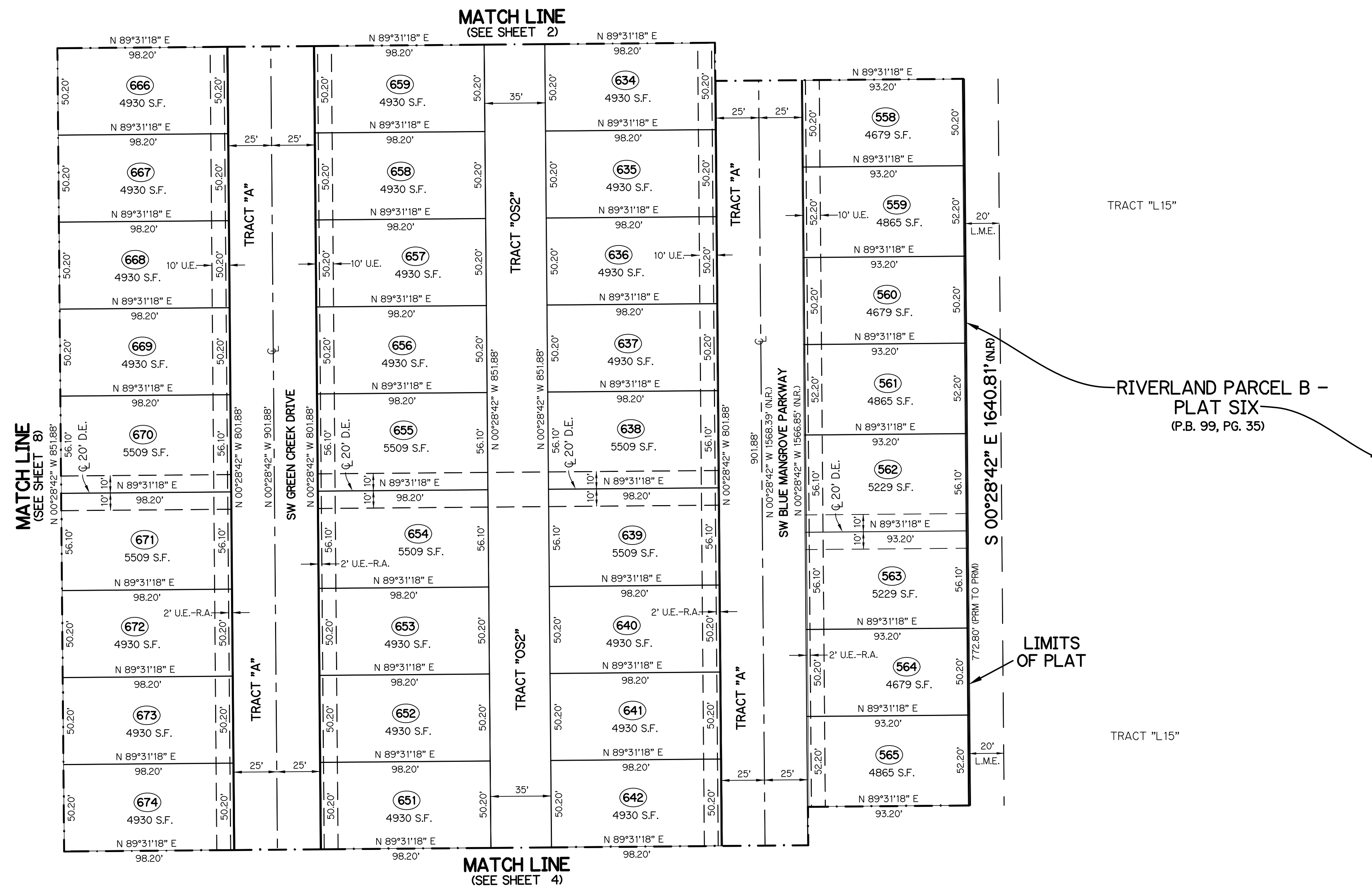
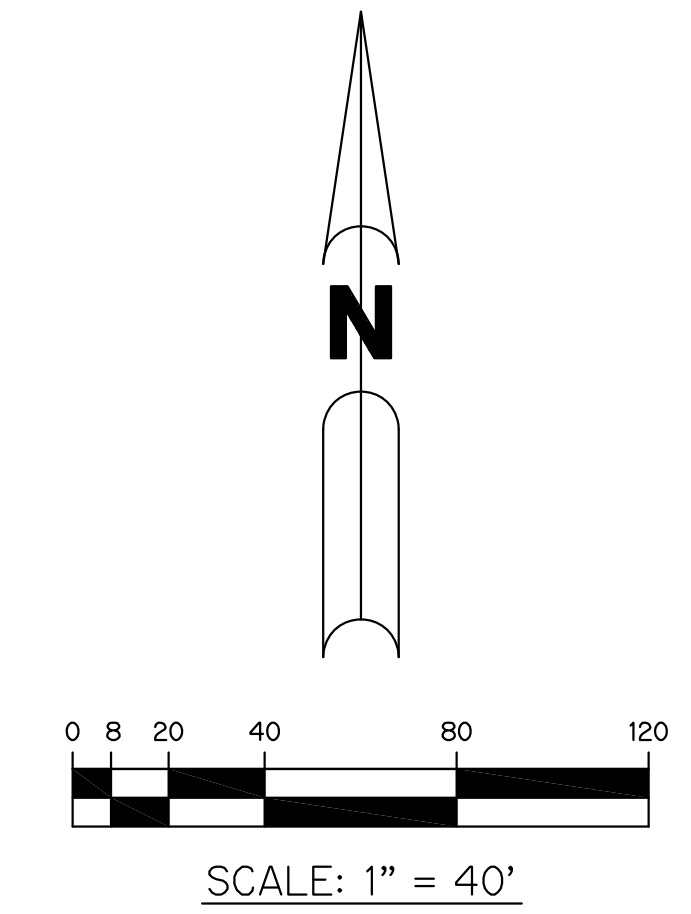


THIS INSTRUMENT WAS PREPARED BY
PERRY C. WHITE, P.S.M. 4213, STATE OF FLORIDA
SAND & HILLS SURVEYING, INC.
8461 LAKE WORTH ROAD, SUITE 410
LAKE WORTH, FLORIDA 33467
LB-7741

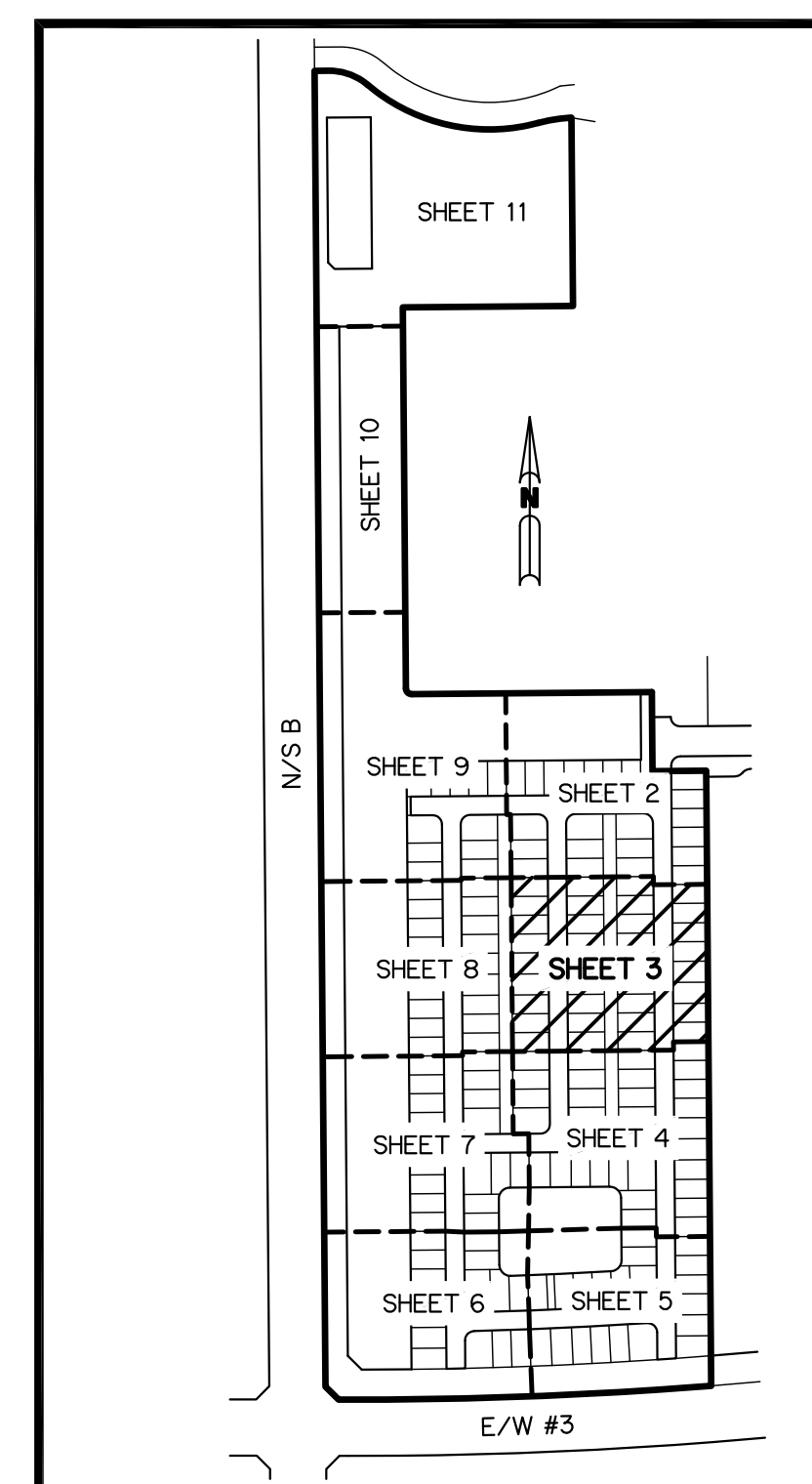
RIVERLAND PARCEL B - PLAT SEVEN

A PARCEL OF LAND LYING IN SECTION 21, TOWNSHIP 37 SOUTH,
RANGE 39 EAST, CITY OF PORT ST. LUCIE, ST. LUCIE COUNTY, FLORIDA

SHEET 3 OF 11



- LEGEND:**
- - SET PERMANENT REFERENCE MONUMENT
5/8" IRON ROD WITH 1.5" CAP
STAMPED L.B. #7741
 - - FOUND PERMANENT REFERENCE MONUMENT
5/8" IRON ROD WITH 1.5" CAP
STAMPED L.B. #7741
 - - SET PERMANENT CONTROL POINT
NAIL WITH 1.25" DISK STAMPED L.B. #7741
 - - FOUND PERMANENT CONTROL POINT
NAIL WITH 1.25" DISK STAMPED L.B. #7741
 - △ - DELTA ANGLE
 - B.E. - BUFFER EASEMENT
 - CB - CHORD BEARING
 - CH - CHORD DISTANCE
 - C - CENTERLINE
 - D.B. - DEED BOOK
 - D.E. - DRAINAGE EASEMENT
 - D.S.E. - DRAINAGE SWALE EASEMENT
 - L - ARC LENGTH
 - L.A.E. - LIMITED ACCESS EASEMENT
 - L.E. - LANDSCAPE EASEMENT
 - L.M.A.E. - LAKE MAINTENANCE ACCESS EASEMENT
 - L.M.E. - LAKE MAINTENANCE EASEMENT
 - N.R. - NOT RADIAL
 - N.R.T.R. - NOT RADIAL TO REAR
 - N.T.S. - NOT TO SCALE
 - O.R.B. - OFFICIAL RECORD BOOK
 - O.E. - MAINTENANCE & ROOF OVERHANG EASEMENT
 - P.B. - PLAT BOOK
 - P.C.P. - PERMANENT CONTROL POINT
 - PGS. - PAGES
 - P.O.B. - POINT OF BEGINNING
 - P.O.C. - POINT OF COMMENCEMENT
 - P.S.L.U.E. - PORT ST. LUCIE UTILITY EASEMENT
 - P.S.M. - PROFESSIONAL SURVEYOR AND MAPPER
 - R - RADIUS
 - R/W - RIGHT-OF-WAY
 - S.F. - SQUARE FEET
 - S.T. - SURVEY TIE
 - U.E. - UTILITY EASEMENT
 - RAD - RADIAL LINE
 - U.E.-R.A. - UTILITY EASEMENT-RESTRICTED AREA

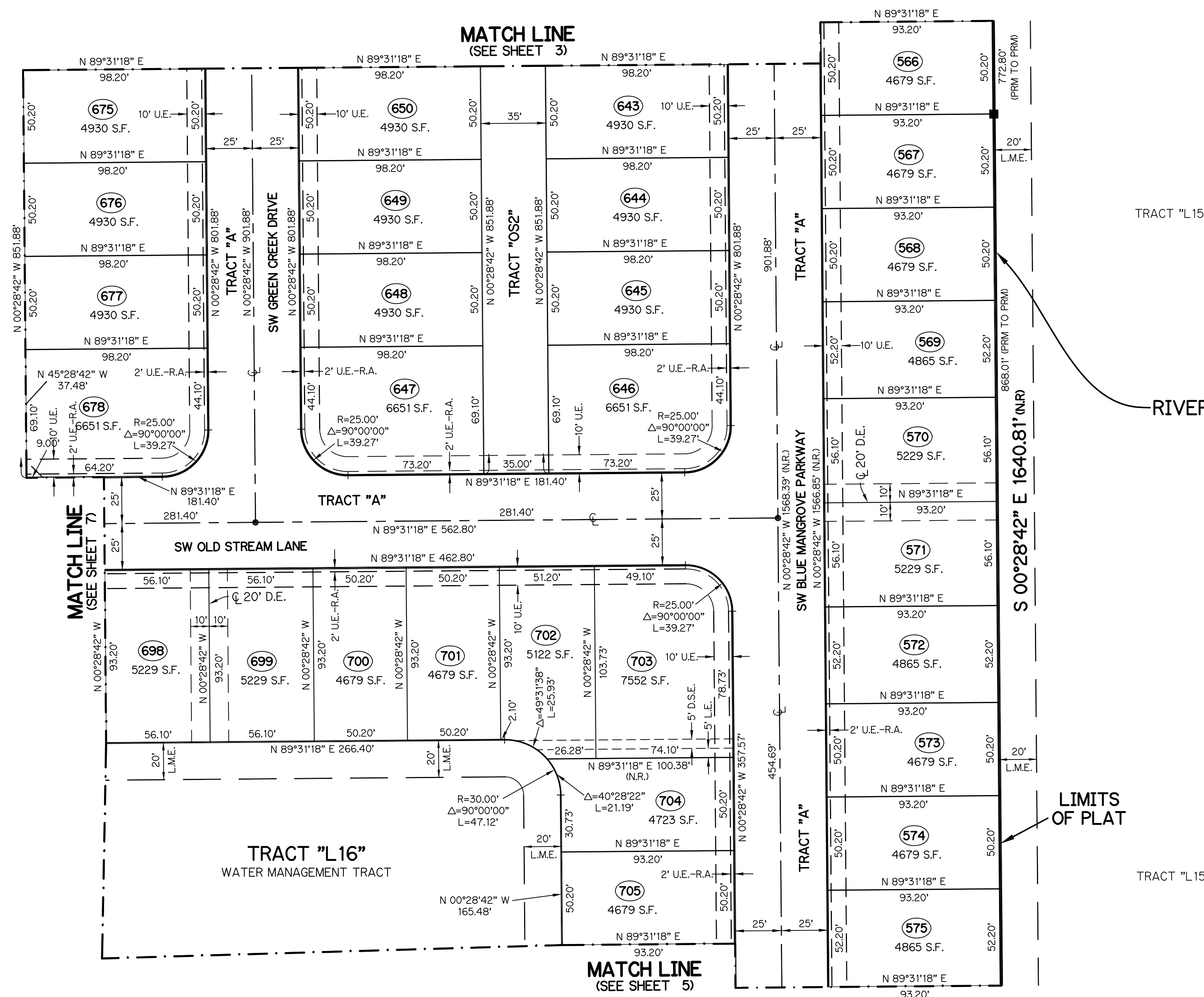
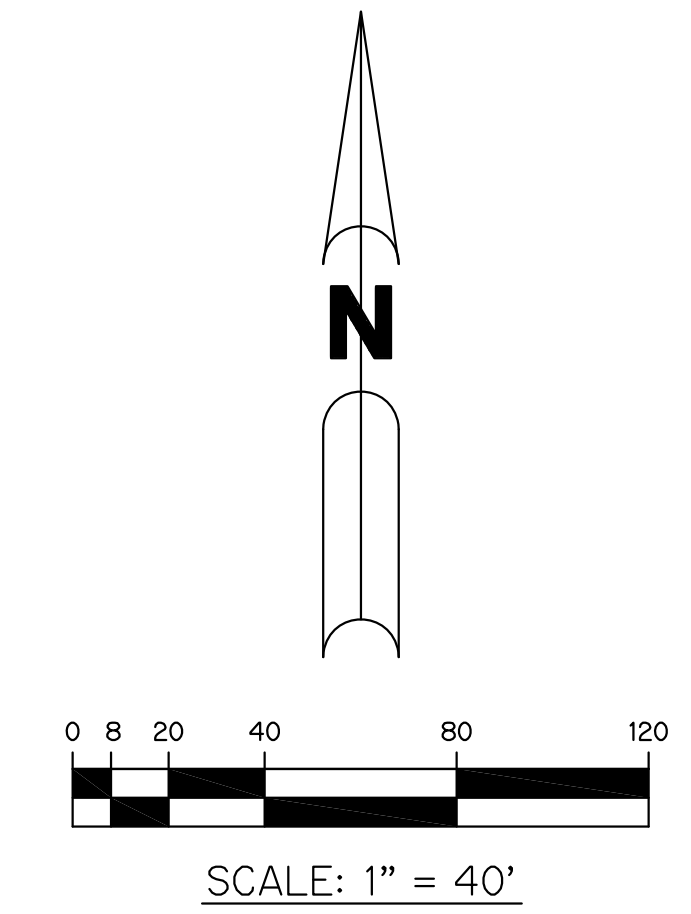


THIS INSTRUMENT WAS PREPARED BY
PERRY C. WHITE, P.S.M. 4213, STATE OF FLORIDA
SAND & HILLS SURVEYING, INC.
8461 LAKE WORTH ROAD, SUITE 410
LAKE WORTH, FLORIDA 33467
LB-7741

RIVERLAND PARCEL B - PLAT SEVEN

A PARCEL OF LAND LYING IN SECTION 21, TOWNSHIP 37 SOUTH,
RANGE 39 EAST, CITY OF PORT ST. LUCIE, ST. LUCIE COUNTY, FLORIDA

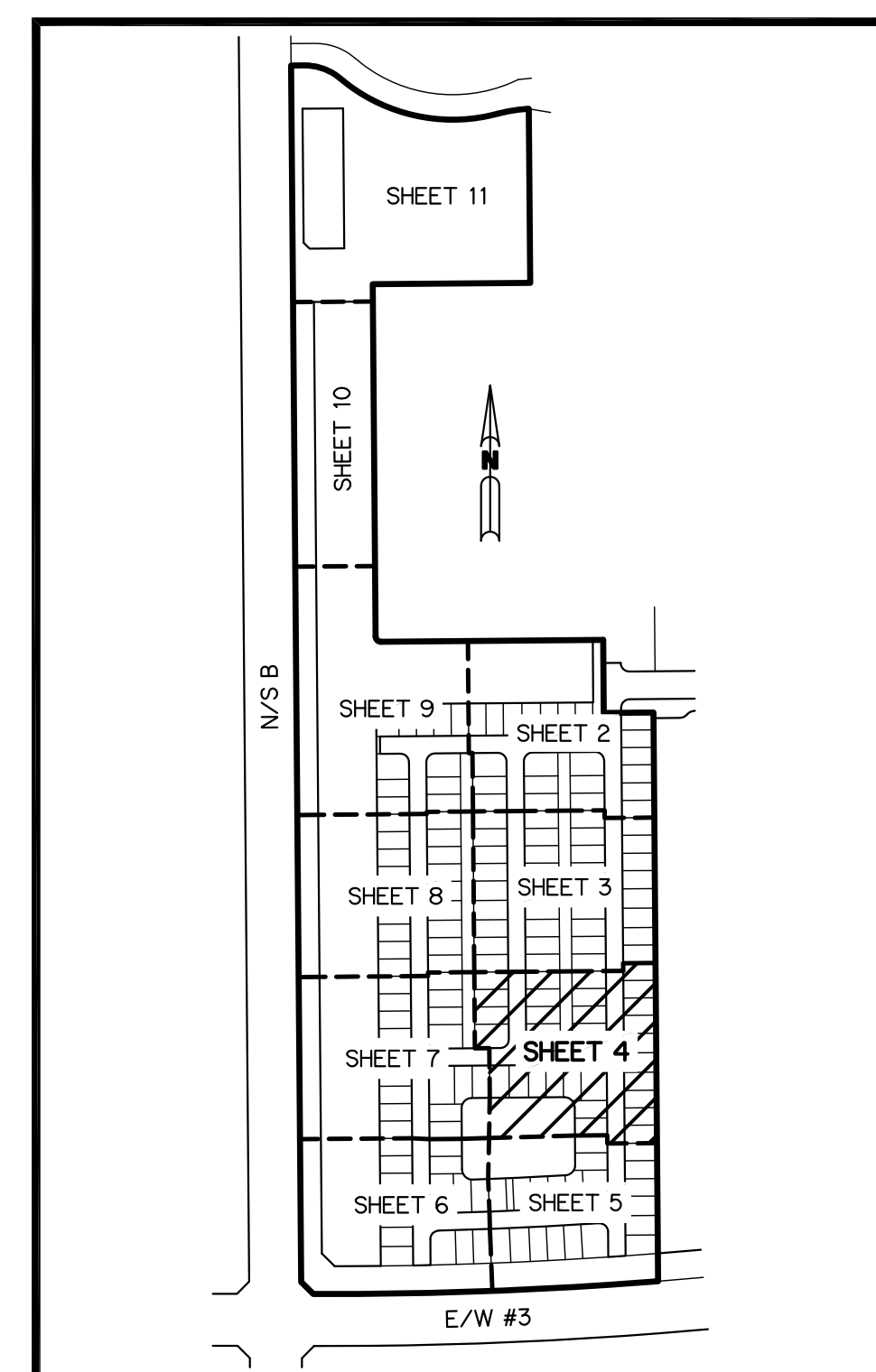
SHEET 4 OF 11



RIVERLAND PARCEL B -
PLAT SIX
(P.B. 99, PG. 35)

LIMITS
OF PLAT

- LEGEND:**
- - SET PERMANENT REFERENCE MONUMENT
5/8" IRON ROD WITH 1.5" CAP
STAMPED L.B. #7741
 - - FOUND PERMANENT REFERENCE MONUMENT
5/8" IRON ROD WITH 1.5" CAP
STAMPED L.B. #7741
 - - SET PERMANENT CONTROL POINT
NAIL WITH 1.25" DISK STAMPED L.B. #7741
 - - FOUND PERMANENT CONTROL POINT
NAIL WITH 1.25" DISK STAMPED L.B. #7741
 - △ - DELTA ANGLE
 - B.E. - BUFFER EASEMENT
 - CB - CHORD BEARING
 - CH - CHORD DISTANCE
 - CL - CENTERLINE
 - D.B. - DEED BOOK
 - D.E. - DRAINAGE EASEMENT
 - D.S.E. - DRAINAGE SWALE EASEMENT
 - L - ARC LENGTH
 - L.A.E. - LIMITED ACCESS EASEMENT
 - L.E. - LANDSCAPE EASEMENT
 - L.M.A.E. - LAKE MAINTENANCE ACCESS EASEMENT
 - L.M.E. - LAKE MAINTENANCE EASEMENT
 - NR - NOT RADIAL
 - N.R.T.R. - NOT RADIAL TO REAR
 - N.T.S. - NOT TO SCALE
 - O.R.B. - OFFICIAL RECORD BOOK
 - O.E. - MAINTENANCE & ROOF OVERHANG EASEMENT
 - P.B. - PLAT BOOK
 - P.C.P. - PERMANENT CONTROL POINT
 - PGS. - PAGES
 - P.O.B. - POINT OF BEGINNING
 - P.O.C. - POINT OF COMMENCEMENT
 - P.S.L.U.E. - PORT ST. LUCIE UTILITY EASEMENT
 - P.S.M. - PROFESSIONAL SURVEYOR AND MAPPER
 - R - RADIUS
 - R/W - RIGHT-OF-WAY
 - S.F. - SQUARE FEET
 - S.T. - SURVEY TIE
 - U.E. - UTILITY EASEMENT
 - RAD - RADIAL LINE
 - U.E.-R.A. - UTILITY EASEMENT-RESTRICTED AREA



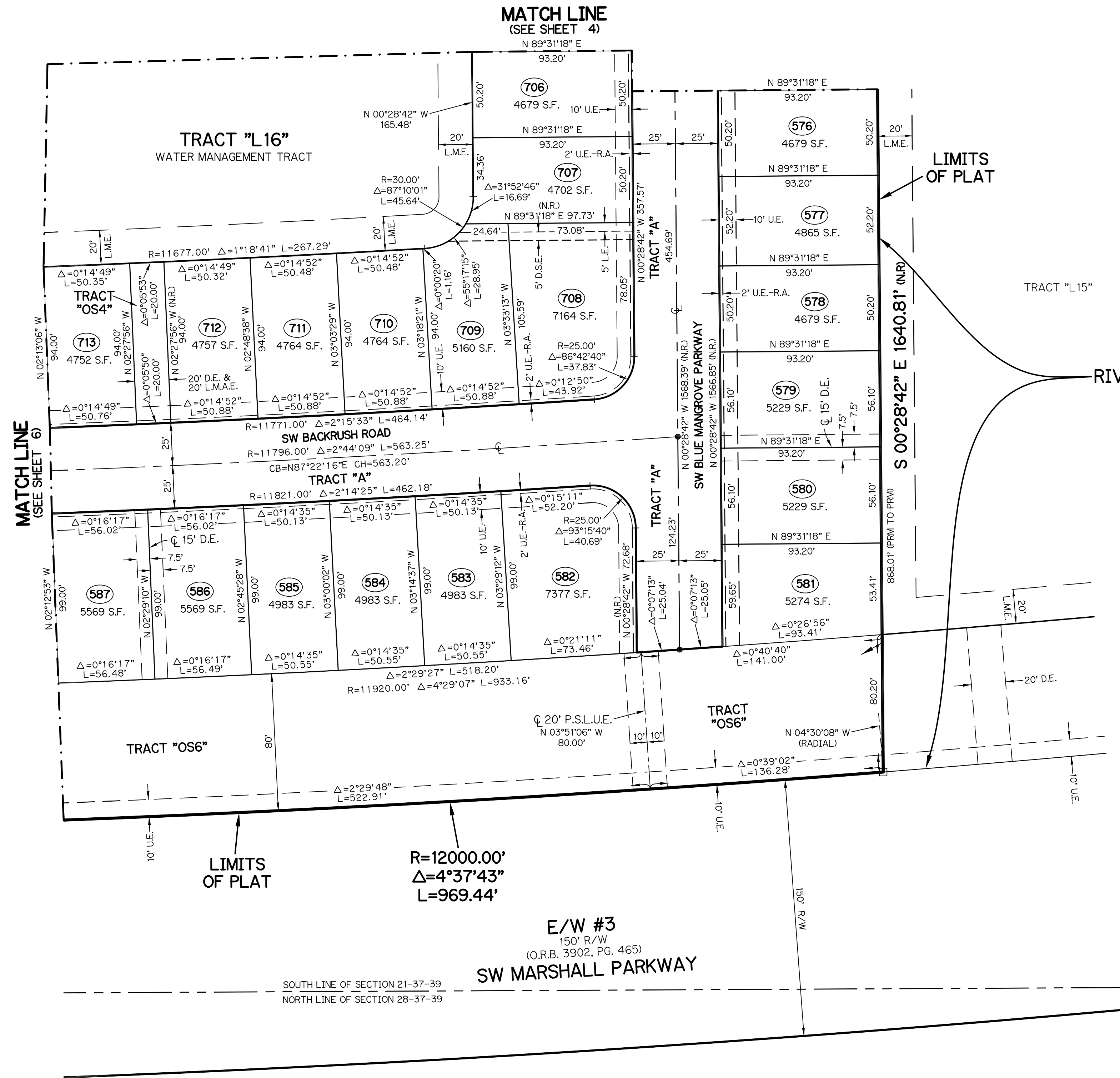
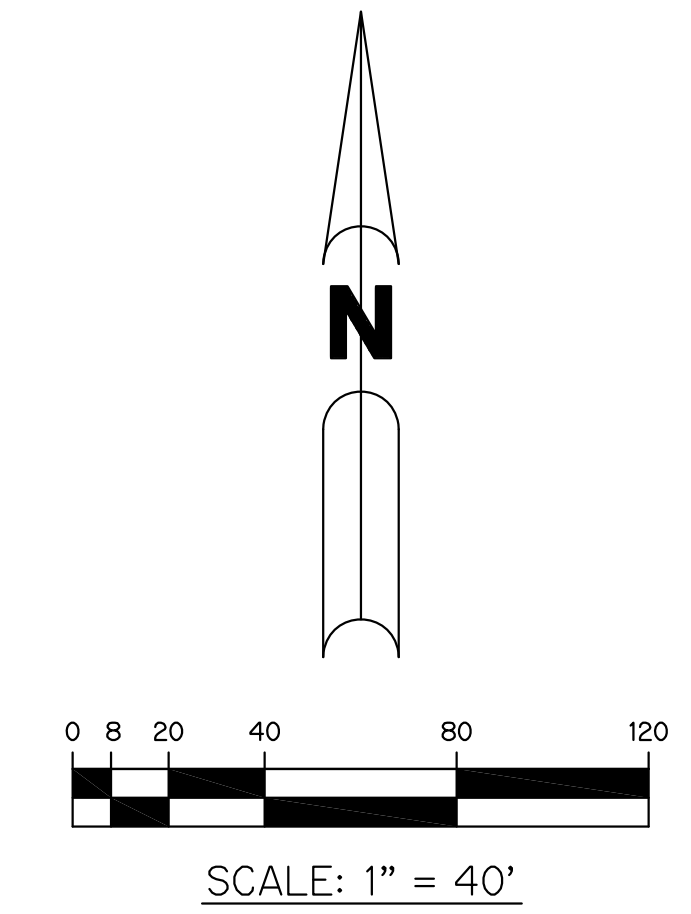
KEY MAP
N.T.S.

THIS INSTRUMENT WAS PREPARED BY
PERRY C. WHITE, P.S.M. 4213, STATE OF FLORIDA
SAND & HILLS SURVEYING, INC.
8461 LAKE WORTH ROAD, SUITE 410
LAKE WORTH, FLORIDA 33467
LB-7741

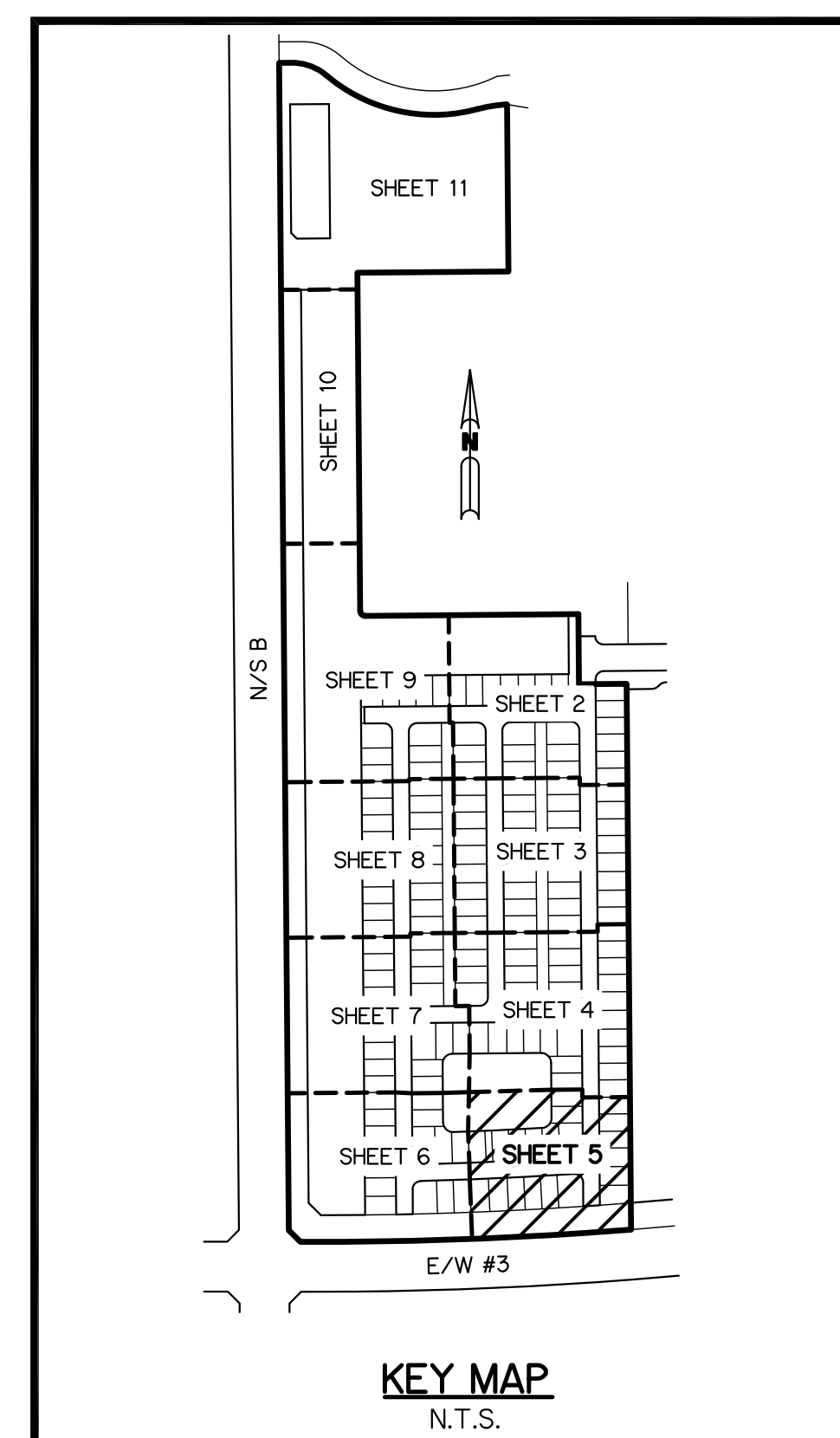
RIVERLAND PARCEL B - PLAT SEVEN

A PARCEL OF LAND LYING IN SECTION 21, TOWNSHIP 37 SOUTH,
RANGE 39 EAST, CITY OF PORT ST. LUCIE, ST. LUCIE COUNTY, FLORIDA

SHEET 5 OF 11



- LEGEND:**
- - SET PERMANENT REFERENCE MONUMENT
5/8" IRON ROD WITH 1.5" CAP
STAMPED L.B. #7741
 - - FOUND PERMANENT REFERENCE MONUMENT
5/8" IRON ROD WITH 1.5" CAP
STAMPED L.B. #7741
 - - SET PERMANENT CONTROL POINT
NAIL WITH 1.25" DISK STAMPED L.B. #7741
 - - FOUND PERMANENT CONTROL POINT
NAIL WITH 1.25" DISK STAMPED L.B. #7741
 - Δ - DELTA ANGLE
 - B.E. - BUFFER EASEMENT
 - CB - CHORD BEARING
 - CH - CHORD DISTANCE
 - C - CENTERLINE
 - D.B. - DEED BOOK
 - D.E. - DRAINAGE EASEMENT
 - D.S.E. - DRAINAGE SWALE EASEMENT
 - L - ARC LENGTH
 - L.A.E. - LIMITED ACCESS EASEMENT
 - L.E. - LANDSCAPE EASEMENT
 - L.M.A.E. - LAKE MAINTENANCE ACCESS EASEMENT
 - L.M.E. - LAKE MAINTENANCE EASEMENT
 - NR - NOT RADIAL
 - N.R.T.R. - NOT RADIAL TO REAR
 - N.T.S. - NOT TO SCALE
 - O.R.B. - OFFICIAL RECORD BOOK
 - O.E. - MAINTENANCE & ROOF OVERHANG EASEMENT
 - P.B. - PLAT BOOK
 - P.C.P. - PERMANENT CONTROL POINT
 - PGS. - PAGES
 - P.O.B. - POINT OF BEGINNING
 - P.O.C. - POINT OF COMMENCEMENT
 - P.S.L.U.E. - PORT ST. LUCIE UTILITY EASEMENT
 - P.S.M. - PROFESSIONAL SURVEYOR AND MAPPER
 - R - RADIUS
 - R/W - RIGHT-OF-WAY
 - S.F. - SQUARE FEET
 - S.T. - SURVEY TIE
 - U.E. - UTILITY EASEMENT
 - RAD - RADIAL LINE
 - U.E.-RA. - UTILITY EASEMENT-RESTRICTED AREA

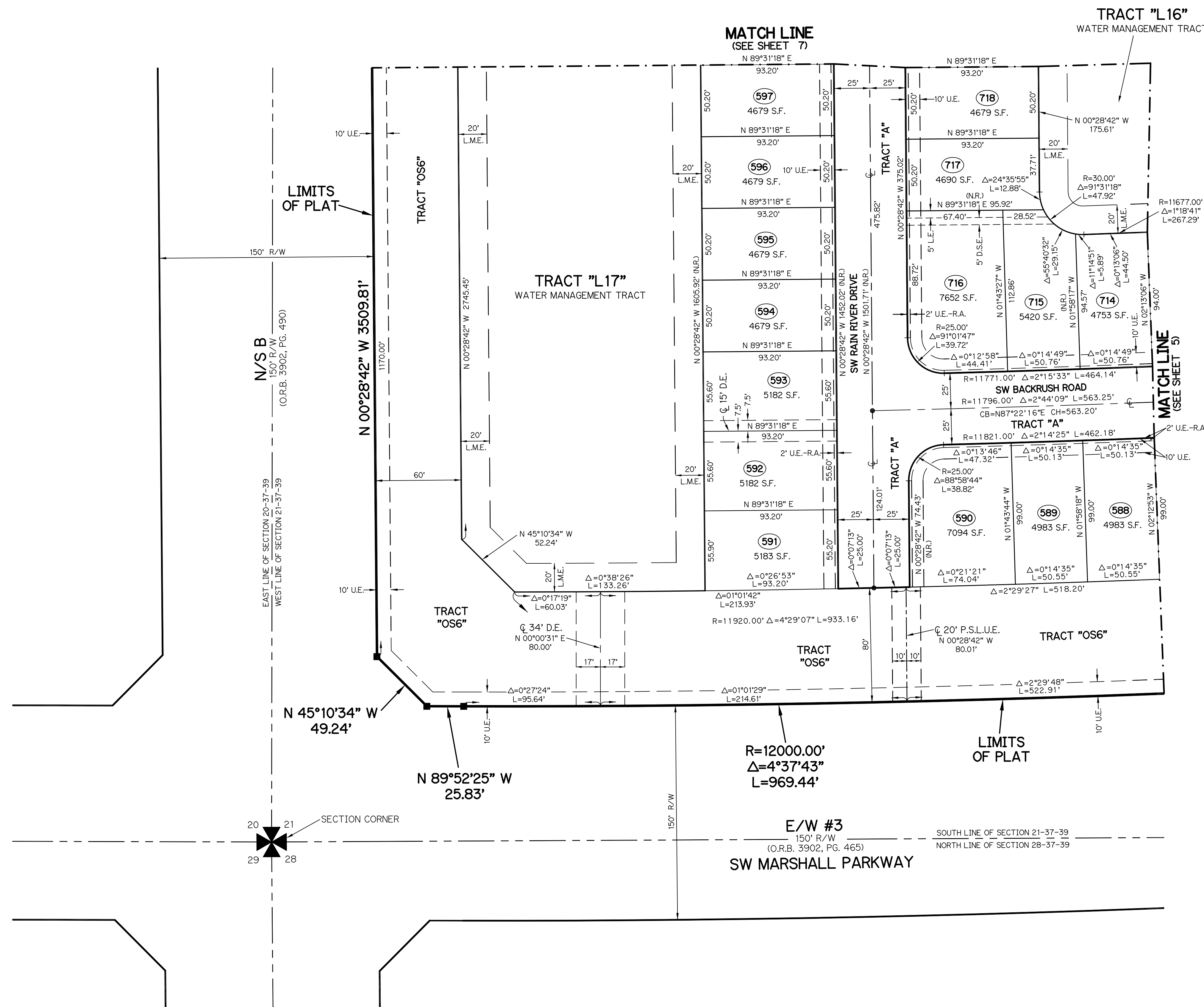
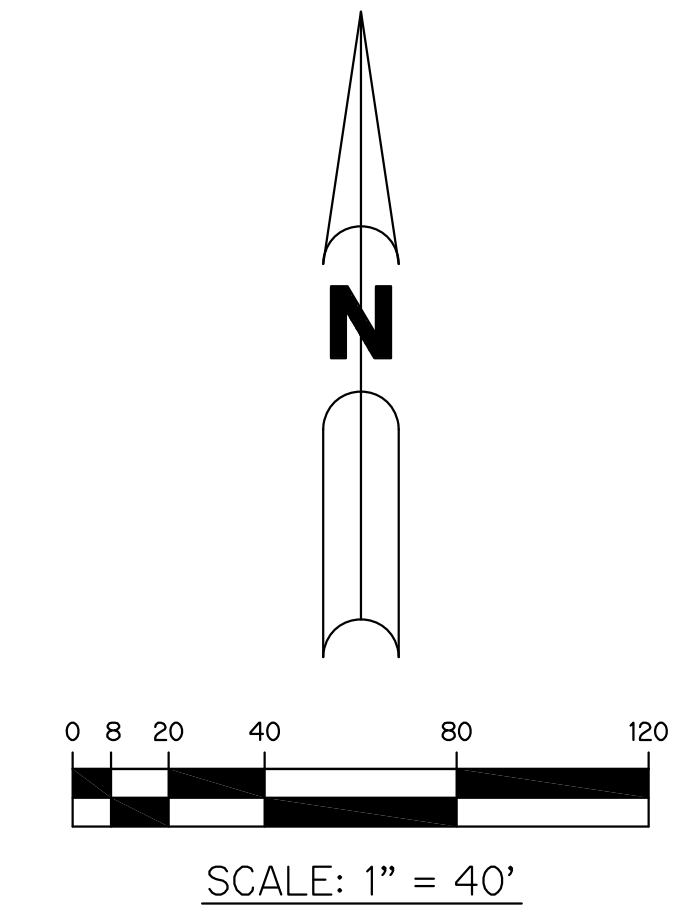


THIS INSTRUMENT WAS PREPARED BY
PERRY C. WHITE, P.S.M. 4213, STATE OF FLORIDA
SAND & HILLS SURVEYING, INC.
8461 LAKE WORTH ROAD, SUITE 410
LAKE WORTH, FLORIDA 33467
LB-7741

RIVERLAND PARCEL B - PLAT SEVEN

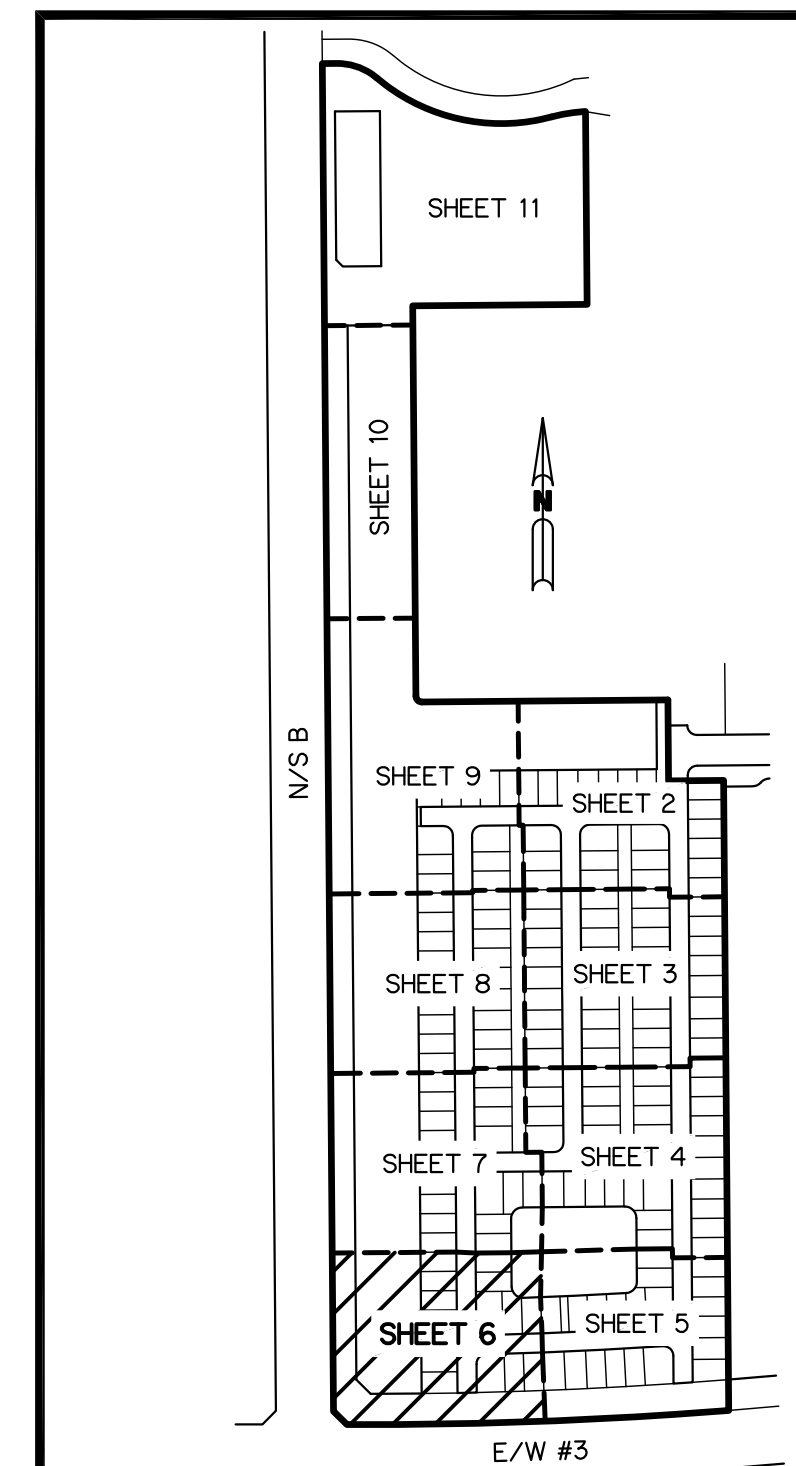
A PARCEL OF LAND LYING IN SECTION 21, TOWNSHIP 37 SOUTH,
RANGE 39 EAST, CITY OF PORT ST. LUCIE, ST. LUCIE COUNTY, FLORIDA

SHEET 6 OF 11



- LEGEND:**
- - SET PERMANENT REFERENCE MONUMENT
5/8" IRON ROD WITH 1.5" CAP
STAMPED L.B. #7741
 - - FOUND PERMANENT REFERENCE MONUMENT
5/8" IRON ROD WITH 1.5" CAP
STAMPED L.B. #7741
 - - SET PERMANENT CONTROL POINT
NAIL WITH 1.25" DISK STAMPED L.B. #7741
 - - FOUND PERMANENT CONTROL POINT
NAIL WITH 1.25" DISK STAMPED L.B. #7741
 - △ - DELTA ANGLE
 - B.E. - BUFFER EASEMENT
 - CB - CHORD BEARING
 - CH - CHORD DISTANCE
 - ⊕ - CENTERLINE
 - D.B. - DEED BOOK
 - D.E. - DRAINAGE EASEMENT
 - D.S.E. - DRAINAGE SWALE EASEMENT
 - L - ARC LENGTH
 - L.A.E. - LIMITED ACCESS EASEMENT
 - L.E. - LANDSCAPE EASEMENT
 - L.M.A.E. - LAKE MAINTENANCE ACCESS EASEMENT
 - L.M.E. - LAKE MAINTENANCE EASEMENT
 - NR - NOT RADIAL
 - N.R.T.R. - NOT RADIAL TO REAR
 - N.T.S. - NOT TO SCALE
 - O.R.B. - OFFICIAL RECORD BOOK
 - O.E. - MAINTENANCE & ROOF OVERHANG EASEMENT
 - P.B. - PLAT BOOK
 - P.C.P. - PERMANENT CONTROL POINT
 - PGS. - PAGES
 - P.O.B. - POINT OF BEGINNING
 - P.O.C. - POINT OF COMMENCEMENT
 - P.S.L.U.E. - PORT ST. LUCIE UTILITY EASEMENT
 - P.S.M. - PROFESSIONAL SURVEYOR AND MAPPER
 - R - RADIUS
 - R/W - RIGHT-OF-WAY
 - S.F. - SQUARE FEET
 - S.T. - SURVEY TIE
 - U.E. - UTILITY EASEMENT
 - RAD - RADIAL LINE
 - U.E.-R.A. - UTILITY EASEMENT-RESTRICTED AREA

THIS INSTRUMENT WAS PREPARED BY
PERRY C. WHITE, P.S.M. 4213, STATE OF FLORIDA
SAND & HILLS SURVEYING, INC.
8461 LAKE WORTH ROAD, SUITE 410
LAKE WORTH, FLORIDA 33467
LB-7741

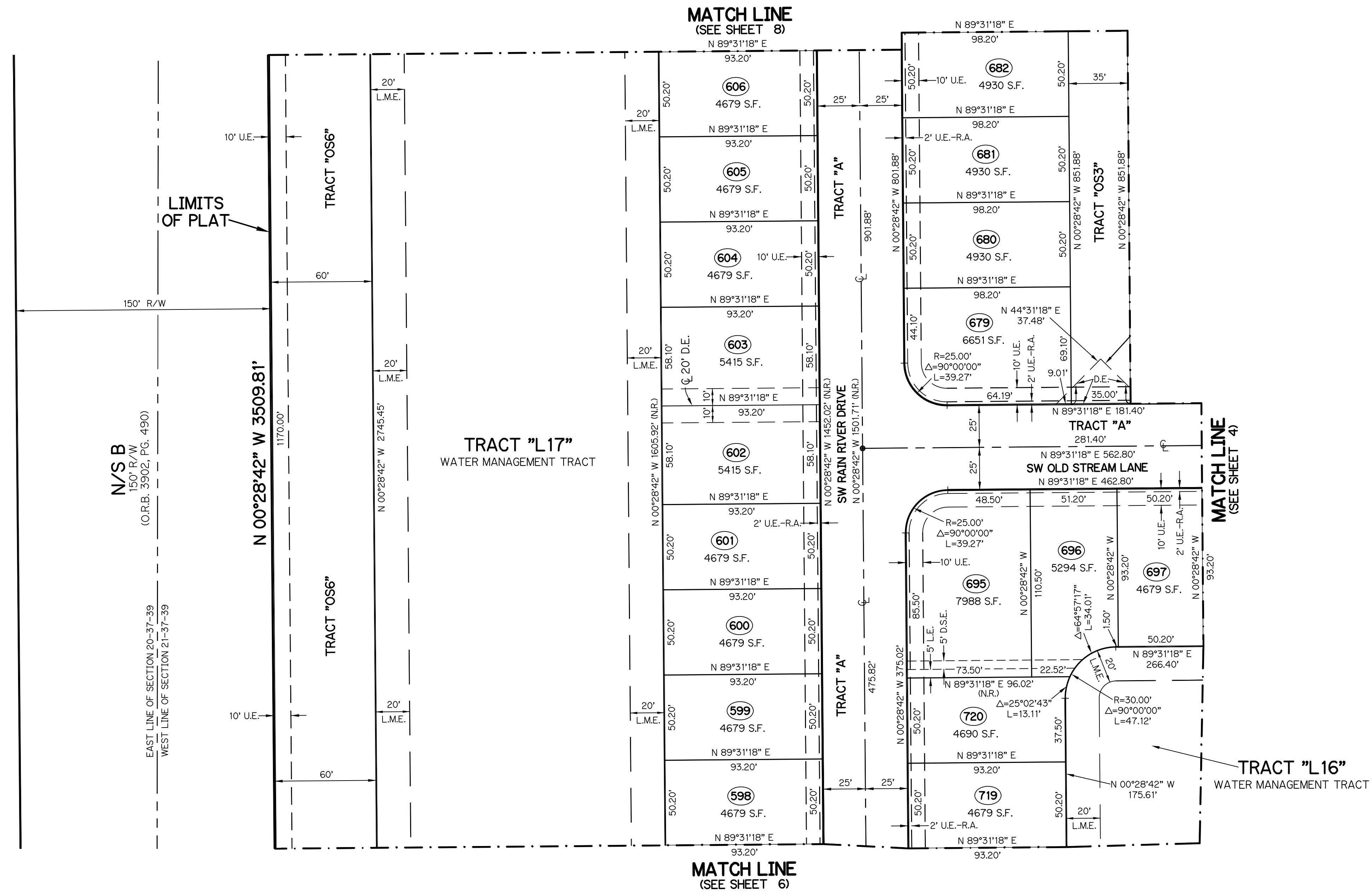
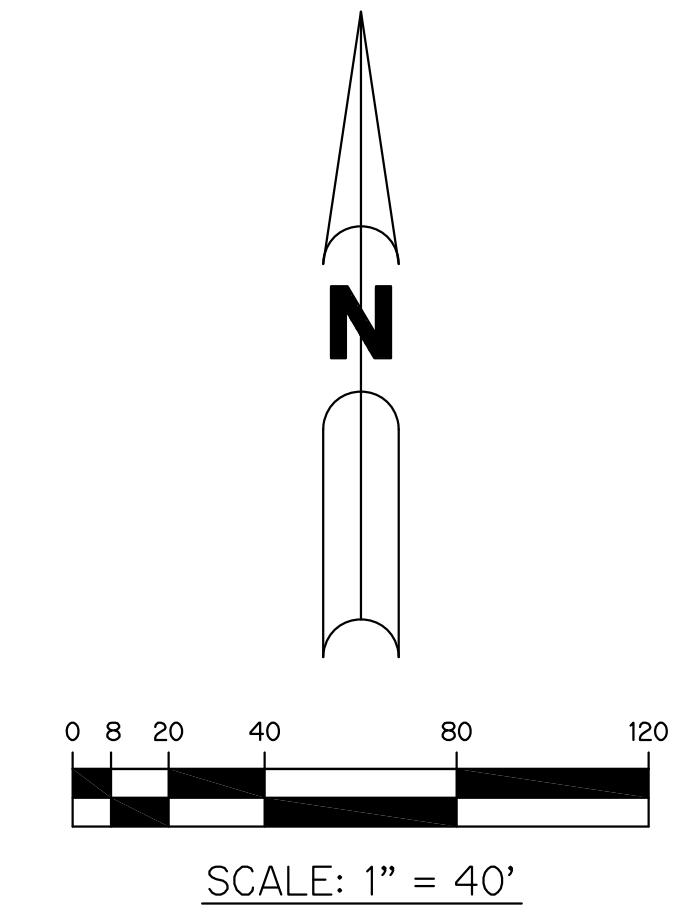


KEY MAP
N.T.S.

RIVERLAND PARCEL B - PLAT SEVEN

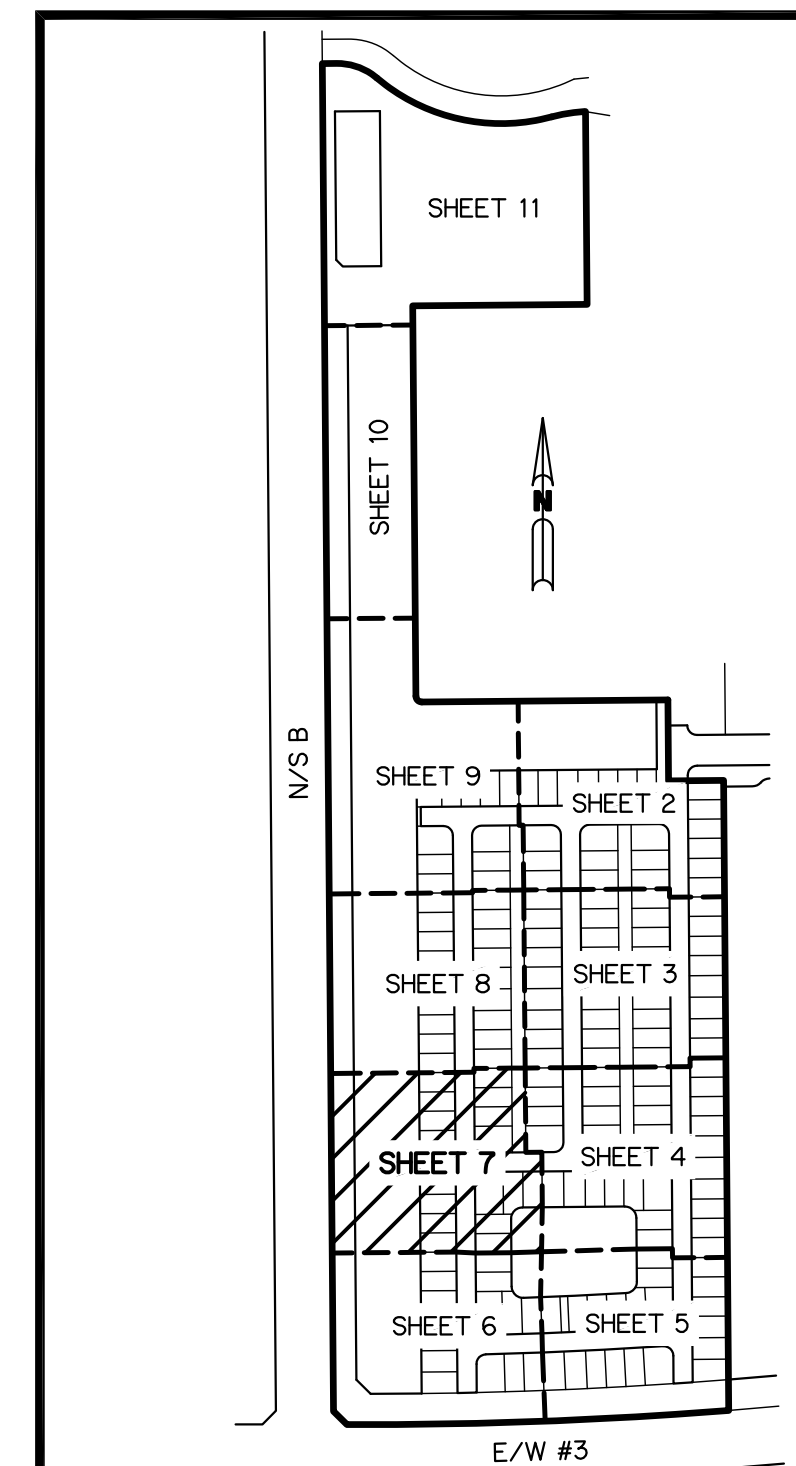
A PARCEL OF LAND LYING IN SECTION 21, TOWNSHIP 37 SOUTH,
RANGE 39 EAST, CITY OF PORT ST. LUCIE, ST. LUCIE COUNTY, FLORIDA

SHEET 7 OF 11



- LEGEND:**
- - SET PERMANENT REFERENCE MONUMENT
5/8" IRON ROAD WITH 1.5" CAP
STAMPED L.B. #7741
 - - FOUND PERMANENT REFERENCE MONUMENT
5/8" IRON ROD WITH 1.5" CAP
STAMPED L.B. #7741
 - - SET PERMANENT CONTROL POINT
NAIL WITH 1.25" DISK STAMPED L.B. #7741
 - - FOUND PERMANENT CONTROL POINT
NAIL WITH 1.25" DISK STAMPED L.B. #7741
 - △ - DELTA ANGLE
 - B.E. - BUFFER EASEMENT
 - CB - CHORD BEARING
 - CH - CHORD DISTANCE
 - C - CENTERLINE
 - D.B. - DEED BOOK
 - D.E. - DRAINAGE EASEMENT
 - D.S.E. - DRAINAGE SWALE EASEMENT
 - L - ARC LENGTH
 - L.A.E. - LIMITED ACCESS EASEMENT
 - L.E. - LANDSCAPE EASEMENT
 - L.M.A.E. - LAKE MAINTENANCE ACCESS EASEMENT
 - L.M.E. - LAKE MAINTENANCE EASEMENT
 - N.R. - NOT RADIAL
 - N.R.T.R. - NOT RADIAL TO REAR
 - N.T.S. - NOT TO SCALE
 - O.R.B. - OFFICIAL RECORD BOOK
 - O.E. - MAINTENANCE & ROOF OVERHANG EASEMENT
 - P.B. - PLAT BOOK
 - P.C.P. - PERMANENT CONTROL POINT
 - PGS. - PAGES
 - P.O.B. - POINT OF BEGINNING
 - P.O.C. - POINT OF COMMENCEMENT
 - P.S.L.U.E. - PORT ST. LUCIE UTILITY EASEMENT
 - P.S.M. - PROFESSIONAL SURVEYOR AND MAPPER
 - R - RADIUS
 - R/W - RIGHT-OF-WAY
 - S.F. - SQUARE FEET
 - S.T. - SURVEY TIE
 - U.E. - UTILITY EASEMENT
 - RAD - RADIAL LINE
 - U.E.-R.A. - UTILITY EASEMENT-RESTRICTED AREA

THIS INSTRUMENT WAS PREPARED BY
PERRY C. WHITE, P.S.M. 4213, STATE OF FLORIDA
SAND & HILLS SURVEYING, INC.
8461 LAKE WORTH ROAD, SUITE 410
LAKE WORTH, FLORIDA 33467
LB-7741

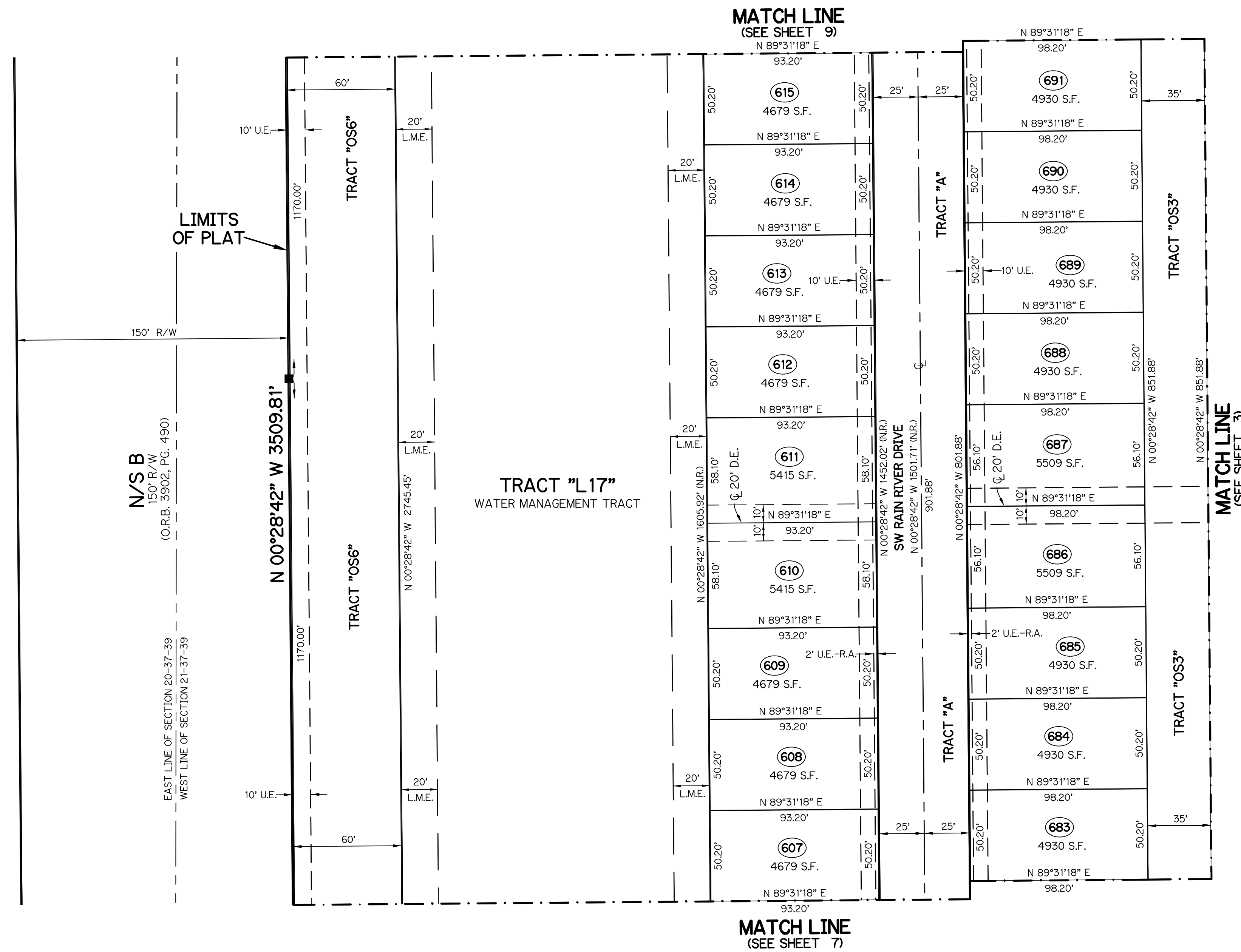
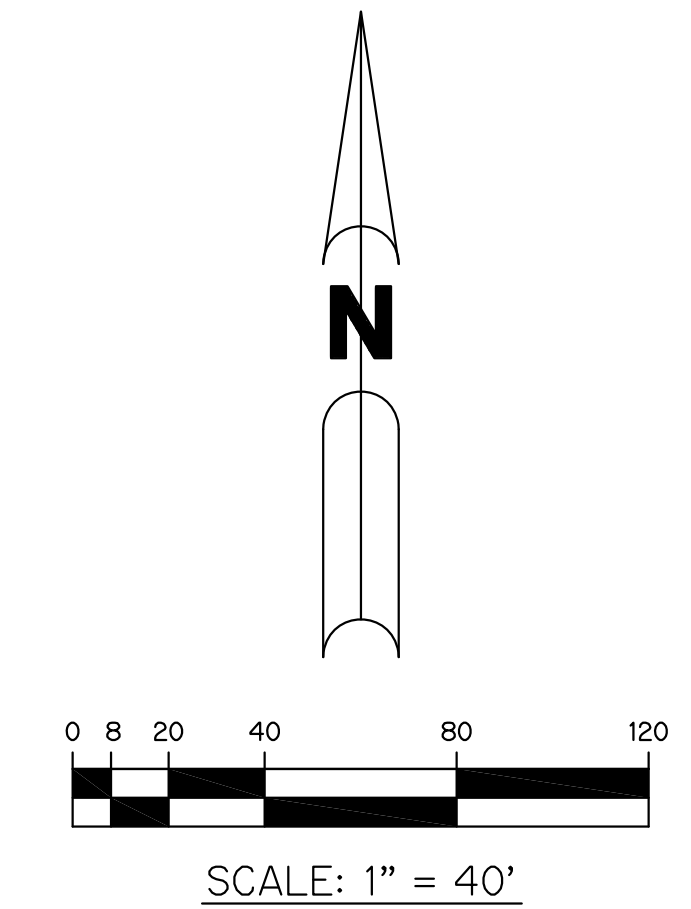


KEY MAP
N.T.S.

RIVERLAND PARCEL B - PLAT SEVEN

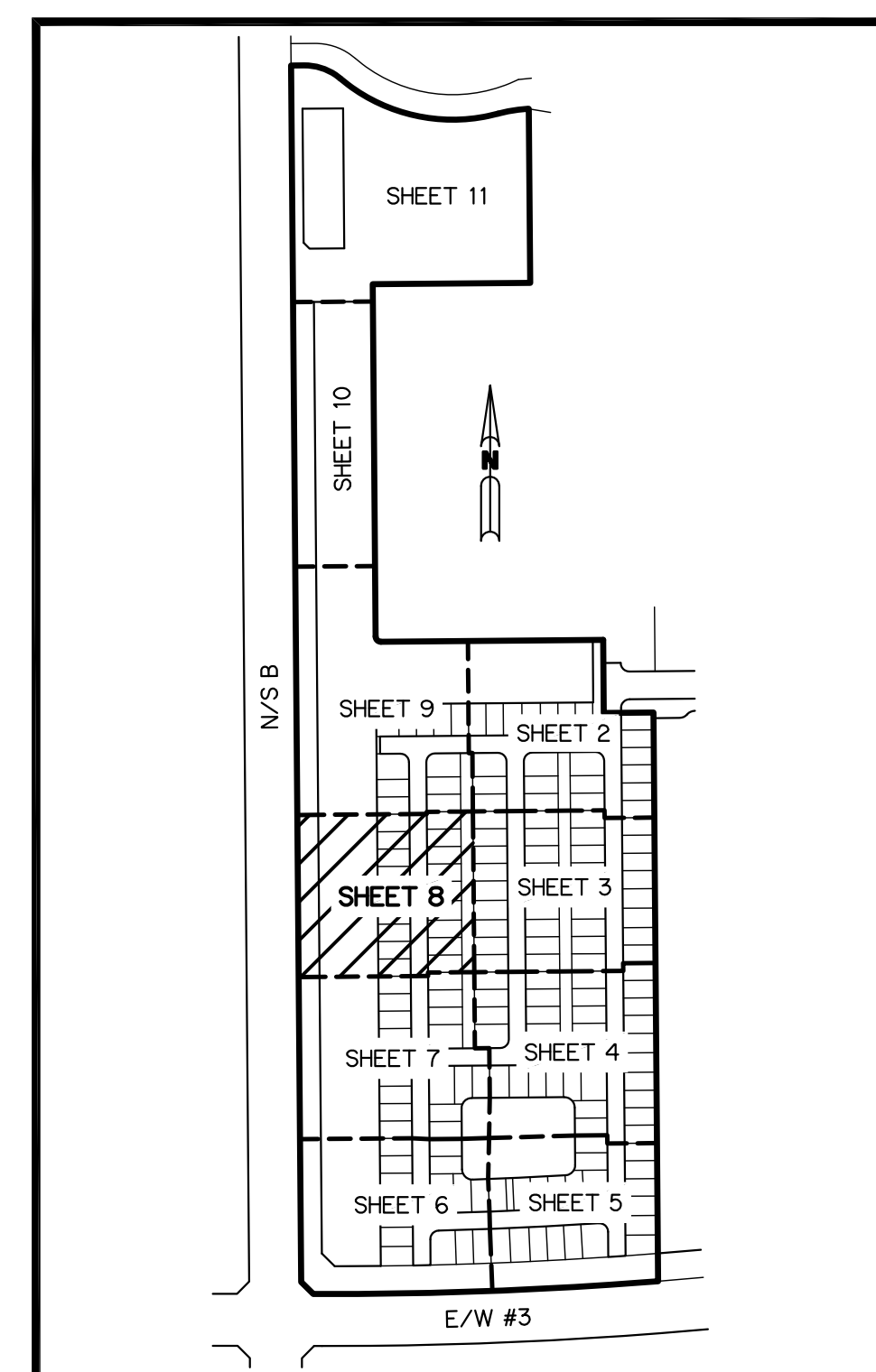
A PARCEL OF LAND LYING IN SECTION 21, TOWNSHIP 37 SOUTH,
RANGE 39 EAST, CITY OF PORT ST. LUCIE, ST. LUCIE COUNTY, FLORIDA

SHEET 8 OF 11



- LEGEND:**
- - SET PERMANENT REFERENCE MONUMENT
5/8" IRON ROAD WITH 1.5" CAP
STAMPED L.B. #7741
 - - FOUND PERMANENT REFERENCE MONUMENT
5/8" IRON ROD WITH 1.5" CAP
STAMPED L.B. #7741
 - - SET PERMANENT CONTROL POINT
NAIL WITH 1.25" DISK STAMPED L.B. #7741
 - - FOUND PERMANENT CONTROL POINT
NAIL WITH 1.25" DISK STAMPED L.B. #7741
 - △ - DELTA ANGLE
 - B.E. - BUFFER EASEMENT
 - CB - CHORD BEARING
 - CH - CHORD DISTANCE
 - CL - CENTERLINE
 - D.B. - DEED BOOK
 - D.E. - DRAINAGE EASEMENT
 - D.S.E. - DRAINAGE SWALE EASEMENT
 - L - ARC LENGTH
 - L.A.E. - LIMITED ACCESS EASEMENT
 - L.E. - LANDSCAPE EASEMENT
 - L.M.A.E. - LAKE MAINTENANCE ACCESS EASEMENT
 - L.M.E. - LAKE MAINTENANCE EASEMENT
 - N.R. - NOT RADIAL
 - N.R.T.R. - NOT RADIAL TO REAR
 - N.T.S. - NOT TO SCALE
 - O.R.B. - OFFICIAL RECORD BOOK
 - O.E. - MAINTENANCE & ROOF OVERHANG EASEMENT
 - P.B. - PLAT BOOK
 - P.C.P. - PERMANENT CONTROL POINT
 - P.G.S. - PAGES
 - P.O.B. - POINT OF BEGINNING
 - P.O.C. - POINT OF COMMENCEMENT
 - P.S.L.U.E. - PORT ST. LUCIE UTILITY EASEMENT
 - P.S.M. - PROFESSIONAL SURVEYOR AND MAPPER
 - R - RADIUS
 - R/W - RIGHT-OF-WAY
 - S.F. - SQUARE FEET
 - S.T. - SURVEY TIE
 - U.E. - UTILITY EASEMENT
 - RAD - RADIAL LINE
 - U.E.-R.A. - UTILITY EASEMENT-RESTRICTED AREA

THIS INSTRUMENT WAS PREPARED BY
PERRY C. WHITE, P.S.M. 4213, STATE OF FLORIDA
SAND & HILLS SURVEYING, INC.
8461 LAKE WORTH ROAD, SUITE 410
LAKE WORTH, FLORIDA 33467
LB-7741

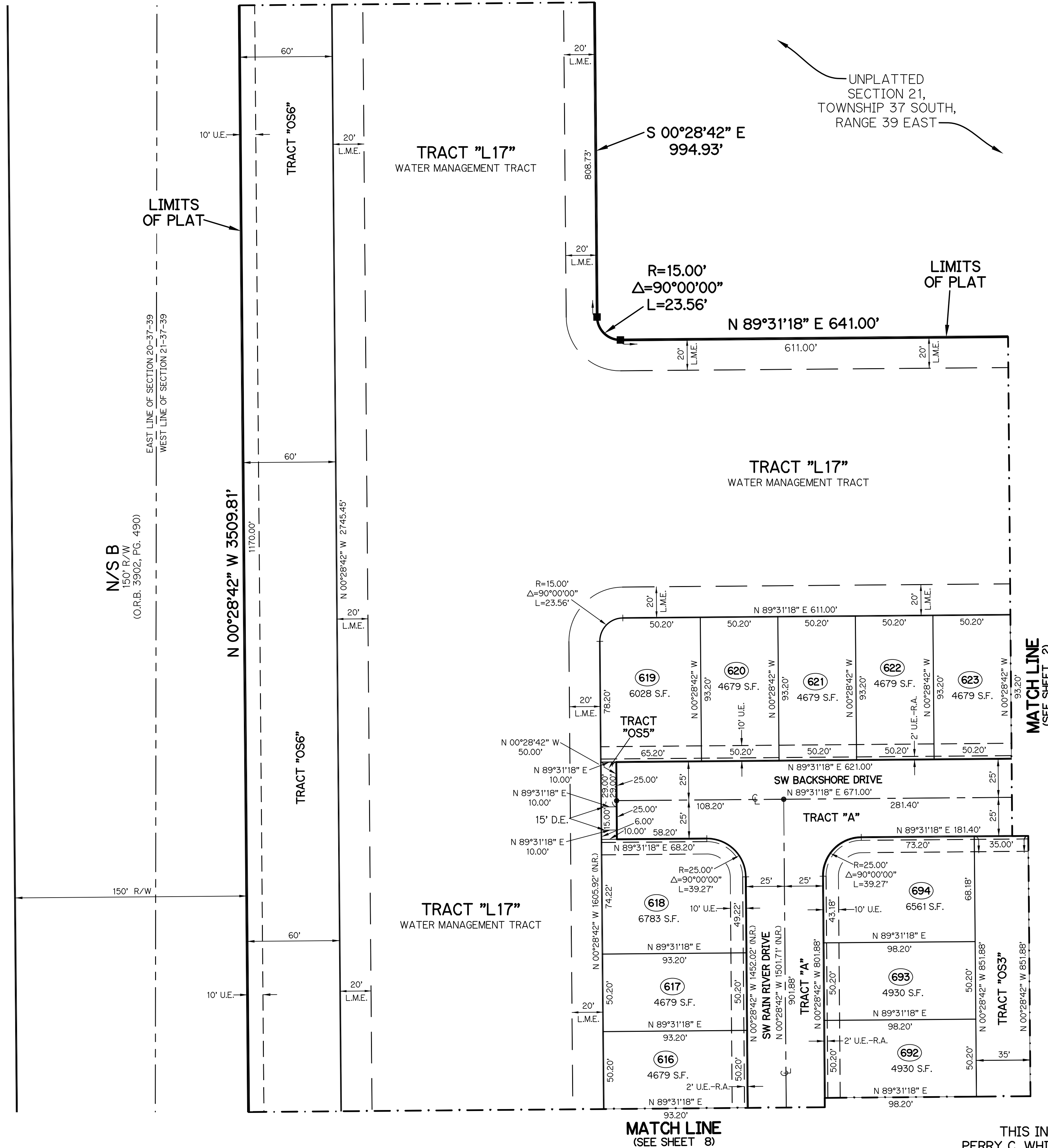
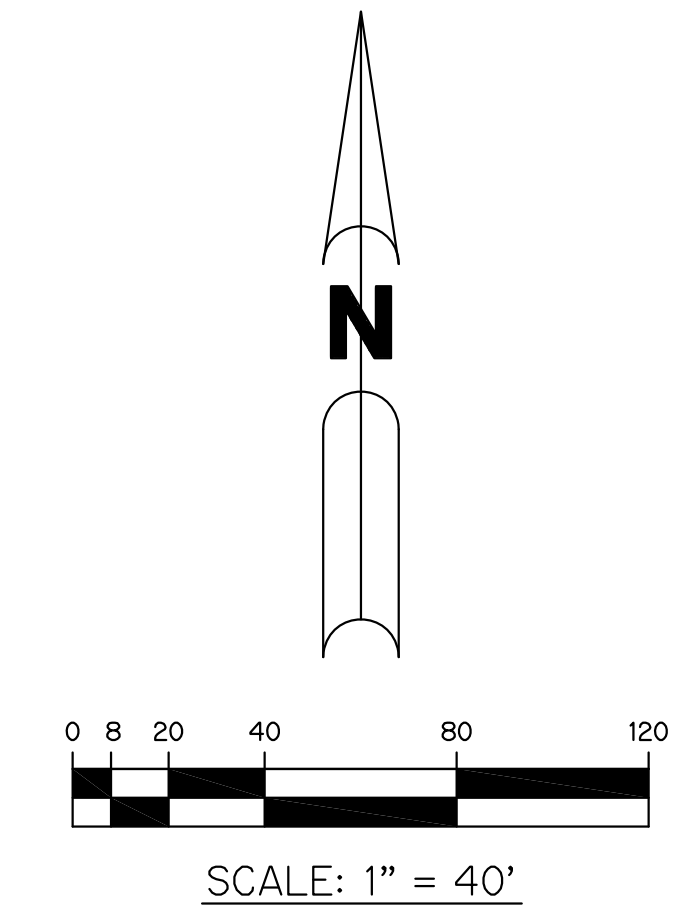


RIVERLAND PARCEL B - PLAT SEVEN

A PARCEL OF LAND LYING IN SECTION 21, TOWNSHIP 37 SOUTH,
RANGE 39 EAST, CITY OF PORT ST. LUCIE, ST. LUCIE COUNTY, FLORIDA

SHEET 9 OF 11

MATCH LINE
(SEE SHEET 10)

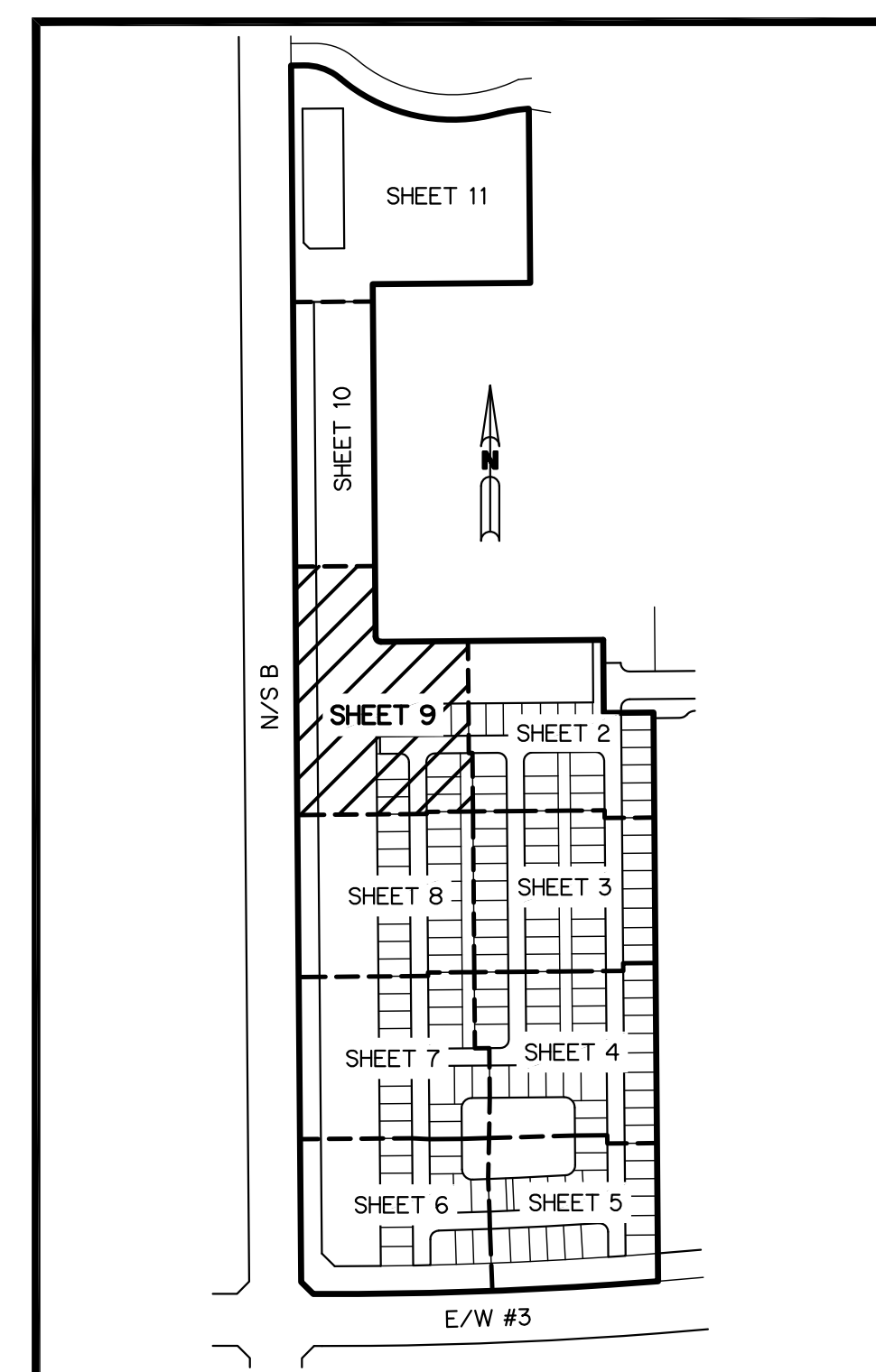


N/S B
150' R/W
(O.R.B. 33902, PG. 490)

EAST LINE OF SECTION 20-37-39
WEST LINE OF SECTION 21-37-39

UNPLATTED SECTION 21,
TOWNSHIP 37 SOUTH,
RANGE 39 EAST

- LEGEND:**
- - SET PERMANENT REFERENCE MONUMENT
5/8" IRON ROD WITH 1.5" CAP
STAMPED L.B. #7741
 - - FOUND PERMANENT REFERENCE MONUMENT
5/8" IRON ROD WITH 1.5" CAP
STAMPED L.B. #7741
 - - SET PERMANENT CONTROL POINT
NAIL WITH 1.25" DISK STAMPED L.B. #7741
 - - FOUND PERMANENT CONTROL POINT
NAIL WITH 1.25" DISK STAMPED L.B. #7741
 - △ - DELTA ANGLE
 - B.E. - BUFFER EASEMENT
 - CB - CHORD BEARING
 - CH - CHORD DISTANCE
 - C - CENTERLINE
 - D.B. - DEED BOOK
 - D.E. - DRAINAGE EASEMENT
 - D.S.E. - DRAINAGE SWALE EASEMENT
 - L - ARC LENGTH
 - L.A.E. - LIMITED ACCESS EASEMENT
 - L.E. - LANDSCAPE EASEMENT
 - L.M.A.E. - LAKE MAINTENANCE ACCESS EASEMENT
 - L.M.E. - LAKE MAINTENANCE EASEMENT
 - NR - NOT RADIAL
 - N.R.T.R. - NOT RADIAL TO REAR
 - N.T.S. - NOT TO SCALE
 - O.R.B. - OFFICIAL RECORD BOOK
 - O.E. - MAINTENANCE & ROOF OVERHANG EASEMENT
 - P.B. - PLAT BOOK
 - P.C.P. - PERMANENT CONTROL POINT
 - PGS. - PAGES
 - P.O.B. - POINT OF BEGINNING
 - P.O.C. - POINT OF COMMENCEMENT
 - P.S.L.U.E. - PORT ST. LUCIE UTILITY EASEMENT
 - P.S.M. - PROFESSIONAL SURVEYOR AND MAPPER
 - R - RADIUS
 - R/W - RIGHT-OF-WAY
 - S.F. - SQUARE FEET
 - S.T. - SURVEY TIE
 - U.E. - UTILITY EASEMENT
 - RAD - RADIAL LINE
 - U.E.-R.A. - UTILITY EASEMENT-RESTRICTED AREA

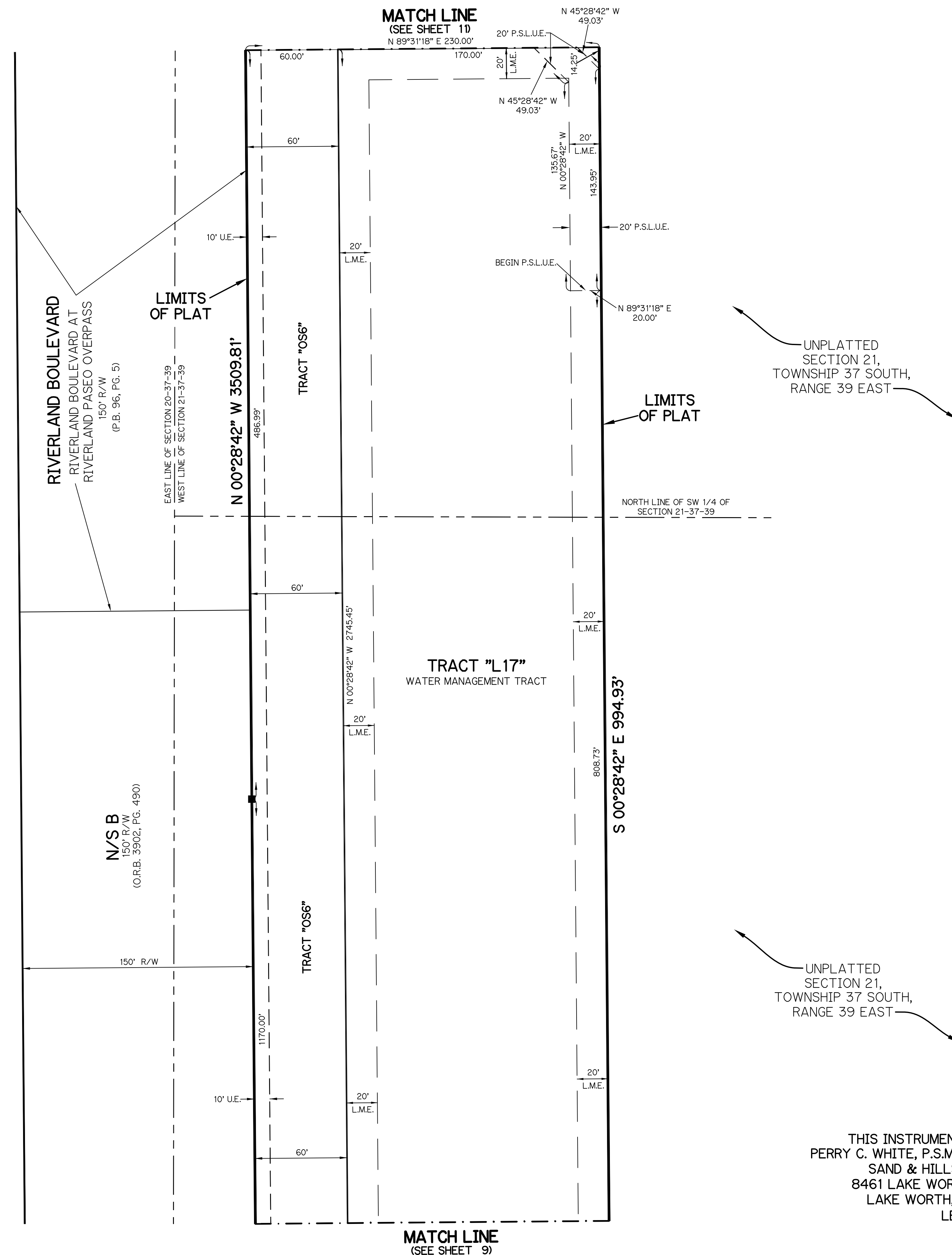
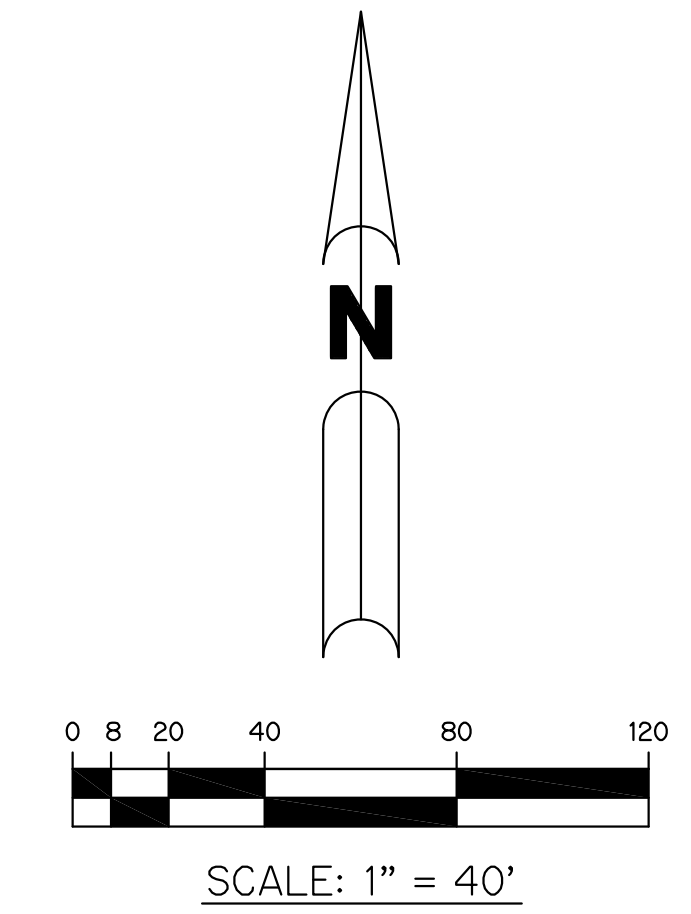


THIS INSTRUMENT WAS PREPARED BY
PERRY C. WHITE, P.S.M. 4213, STATE OF FLORIDA
SAND & HILLS SURVEYING, INC.
8461 LAKE WORTH ROAD, SUITE 410
LAKE WORTH, FLORIDA 33467
LB-7741

RIVERLAND PARCEL B - PLAT SEVEN

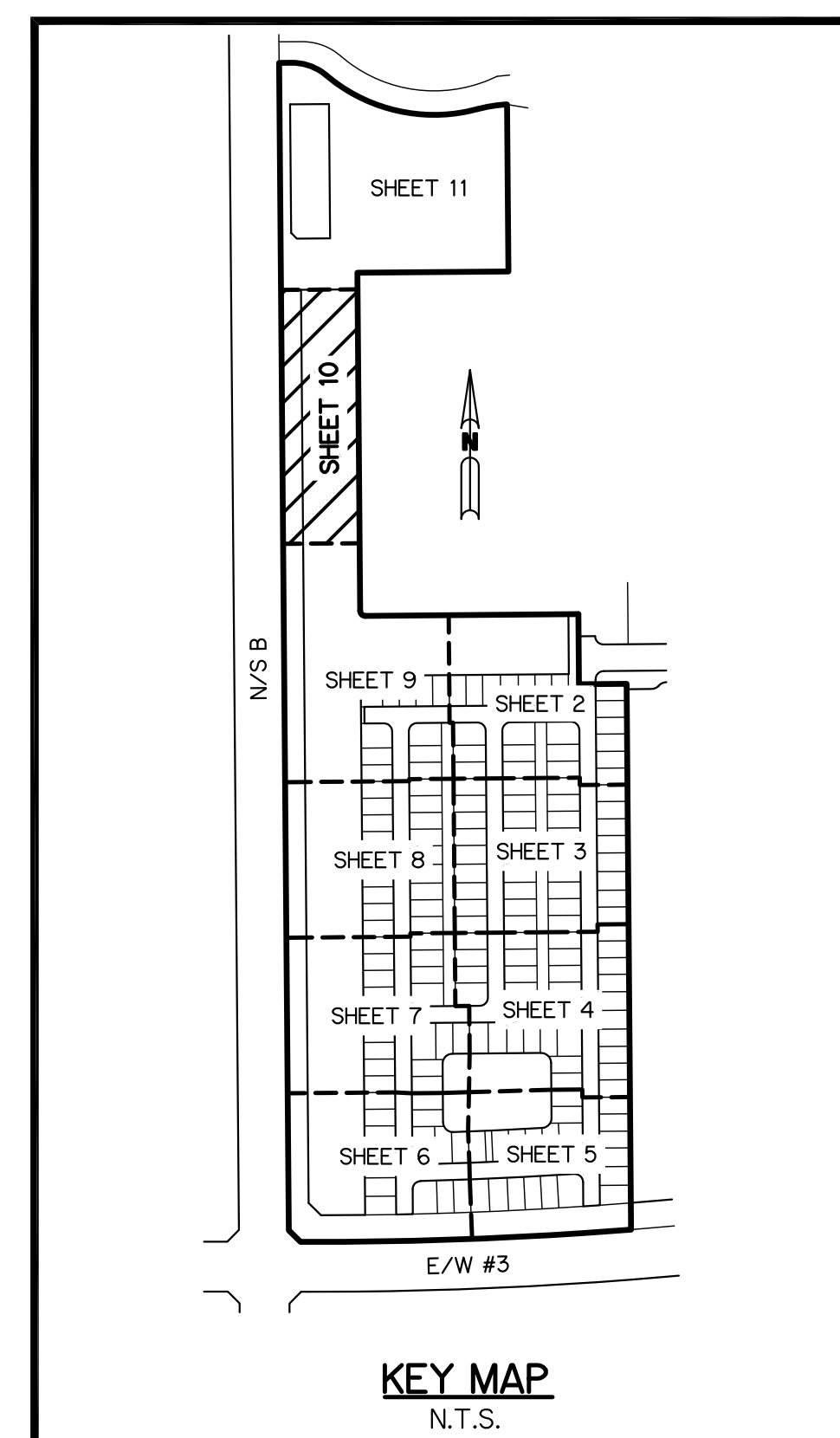
A PARCEL OF LAND LYING IN SECTION 21, TOWNSHIP 37 SOUTH,
RANGE 39 EAST, CITY OF PORT ST. LUCIE, ST. LUCIE COUNTY, FLORIDA

SHEET 10 OF 11



- LEGEND:**
- - SET PERMANENT REFERENCE MONUMENT
5/8" IRON ROD WITH 1.5" CAP
STAMPED L.B. #7741
 - - FOUND PERMANENT REFERENCE MONUMENT
5/8" IRON ROD WITH 1.5" CAP
STAMPED L.B. #7741
 - - SET PERMANENT CONTROL POINT
NAIL WITH 1.25" DISK STAMPED L.B. #7741
 - - FOUND PERMANENT CONTROL POINT
NAIL WITH 1.25" DISK STAMPED L.B. #7741
 - △ - DELTA ANGLE
 - B.E. - BUFFER EASEMENT
 - CB - CHORD BEARING
 - CH - CHORD DISTANCE
 - C - CENTERLINE
 - D.B. - DEED BOOK
 - D.E. - DRAINAGE EASEMENT
 - D.S.E. - DRAINAGE SWALE EASEMENT
 - L - ARC LENGTH
 - L.A.E. - LIMITED ACCESS EASEMENT
 - L.E. - LANDSCAPE EASEMENT
 - L.M.A.E. - LAKE MAINTENANCE ACCESS EASEMENT
 - L.M.E. - LAKE MAINTENANCE EASEMENT
 - N.R. - NOT RADIAL
 - N.R.T.R. - NOT RADIAL TO REAR
 - N.T.S. - NOT TO SCALE
 - O.R.B. - OFFICIAL RECORD BOOK
 - O.E. - MAINTENANCE & ROOF OVERHANG EASEMENT
 - P.B. - PLAT BOOK
 - P.C.P. - PERMANENT CONTROL POINT
 - PGS. - PAGES
 - P.O.B. - POINT OF BEGINNING
 - P.O.C. - POINT OF COMMENCEMENT
 - P.S.L.U.E. - PORT ST. LUCIE UTILITY EASEMENT
 - P.S.M. - PROFESSIONAL SURVEYOR AND MAPPER
 - R - RADIUS
 - R/W - RIGHT-OF-WAY
 - S.F. - SQUARE FEET
 - S.T. - SURVEY TIE
 - U.E. - UTILITY EASEMENT
 - RAD - RADIAL LINE
 - U.E.-R.A. - UTILITY EASEMENT-RESTRICTED AREA

THIS INSTRUMENT WAS PREPARED BY
PERRY C. WHITE, P.S.M. 4213, STATE OF FLORIDA
SAND & HILLS SURVEYING, INC.
8461 LAKE WORTH ROAD, SUITE 410
LAKE WORTH, FLORIDA 33467
LB-7741

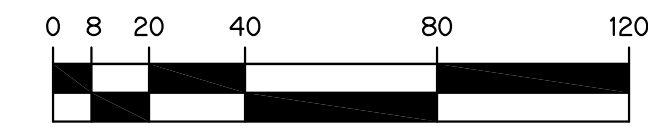


KEY MAP
N.T.S.

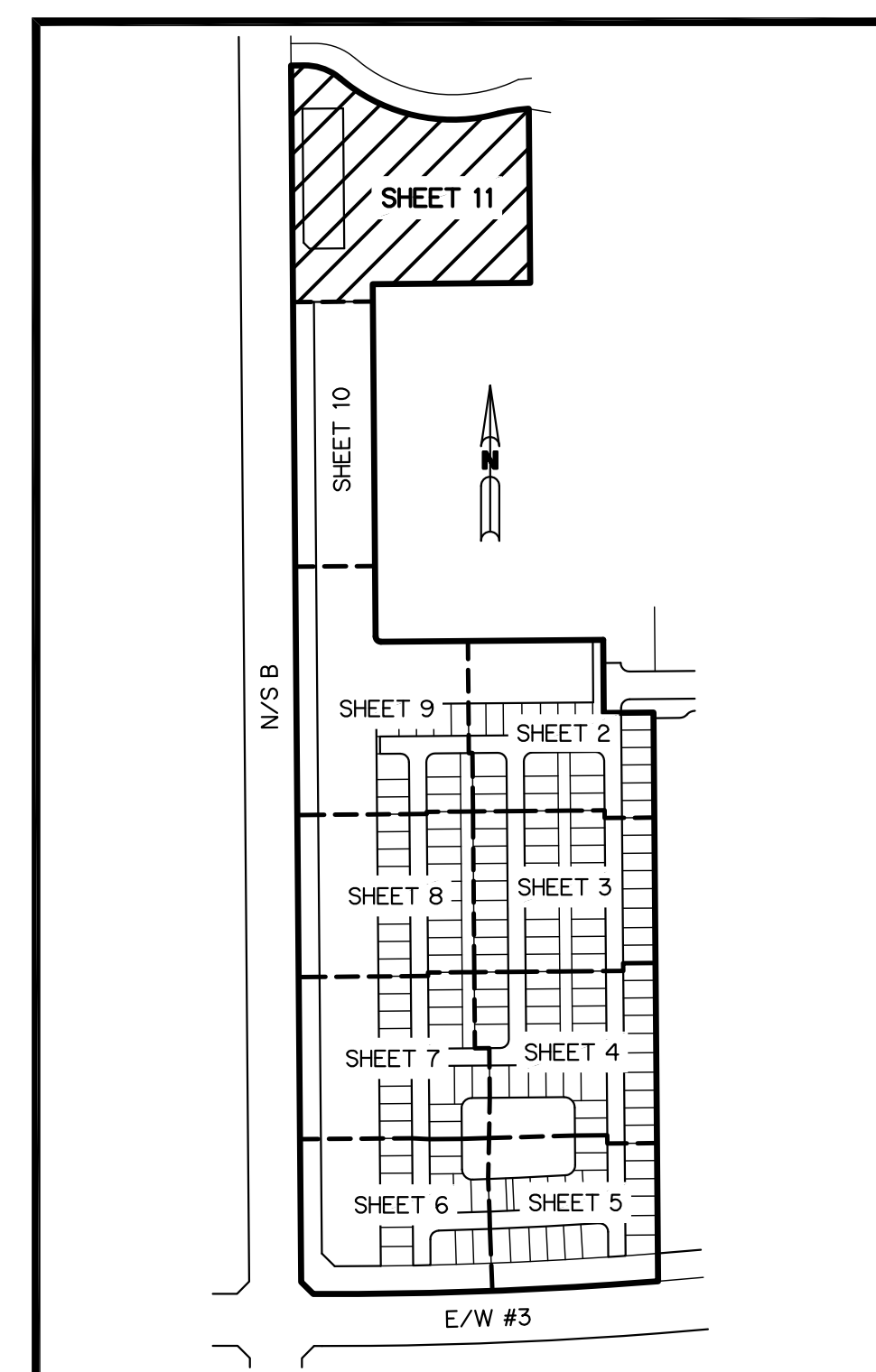
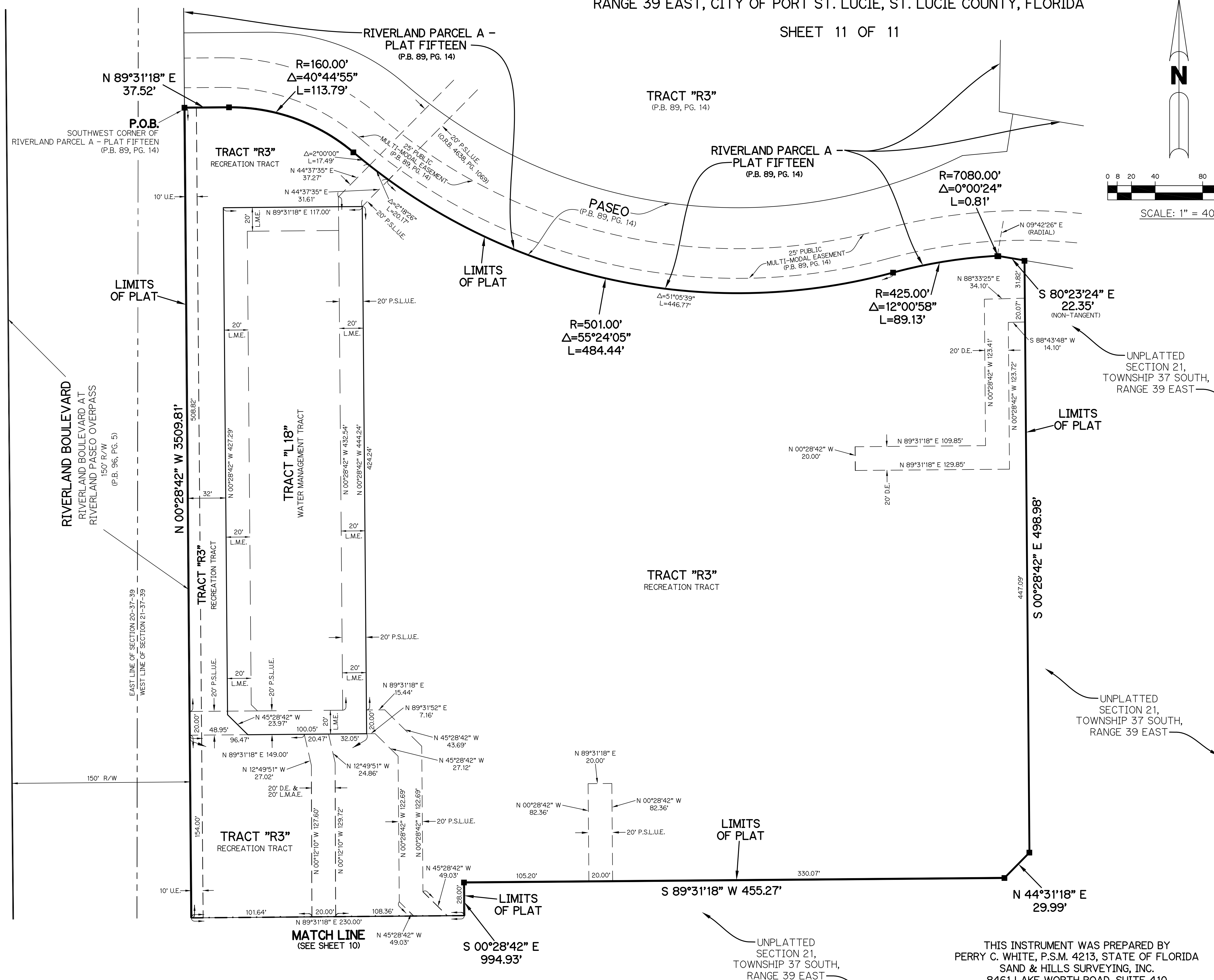
RIVERLAND PARCEL B - PLAT SEVEN

A PARCEL OF LAND LYING IN SECTION 21, TOWNSHIP 37 SOUTH,
RANGE 39 EAST, CITY OF PORT ST. LUCIE, ST. LUCIE COUNTY, FLORIDA

SHEET 11 OF 11



- LEGEND:**
- - SET PERMANENT REFERENCE MONUMENT
5/8" IRON ROD WITH 1.5" CAP
STAMPED L.B. #7741
 - - FOUND PERMANENT REFERENCE MONUMENT
5/8" IRON ROD WITH 1.5" CAP
STAMPED L.B. #7741
 - - SET PERMANENT CONTROL POINT
NAIL WITH 1.25" DISK STAMPED L.B. #7741
 - - FOUND PERMANENT CONTROL POINT
NAIL WITH 1.25" DISK STAMPED L.B. #7741
 - △ - DELTA ANGLE
 - B.E. - BUFFER EASEMENT
 - CB - CHORD BEARING
 - CH - CHORD DISTANCE
 - C - CENTERLINE
 - D.B. - DEED BOOK
 - D.E. - DRAINAGE EASEMENT
 - D.S.E. - DRAINAGE SWALE EASEMENT
 - L - ARC LENGTH
 - L.A.E. - LIMITED ACCESS EASEMENT
 - L.E. - LANDSCAPE EASEMENT
 - L.M.A.E. - LAKE MAINTENANCE ACCESS EASEMENT
 - L.M.E. - LAKE MAINTENANCE EASEMENT
 - N.R. - NOT RADIAL
 - N.R.T.R. - NOT RADIAL TO REAR
 - N.T.S. - NOT TO SCALE
 - O.R.B. - OFFICIAL RECORD BOOK
 - O.E. - MAINTENANCE & ROOF OVERHANG EASEMENT
 - P.B. - PLAT BOOK
 - P.C.P. - PERMANENT CONTROL POINT
 - PGS. - PAGES
 - P.O.B. - POINT OF BEGINNING
 - P.O.C. - POINT OF COMMENCEMENT
 - P.S.L.U.E. - PORT ST. LUCIE UTILITY EASEMENT
 - P.S.M. - PROFESSIONAL SURVEYOR AND MAPPER
 - R - RADIUS
 - R/W - RIGHT-OF-WAY
 - S.F. - SQUARE FEET
 - S.T. - SURVEY TIE
 - U.E. - UTILITY EASEMENT
 - RAD - RADIAL LINE
 - U.E.-R.A. - UTILITY EASEMENT-RESTRICTED AREA



THIS INSTRUMENT WAS PREPARED BY
PERRY C. WHITE, P.S.M. 4213, STATE OF FLORIDA
SAND & HILLS SURVEYING, INC.
8461 LAKE WORTH ROAD, SUITE 410
LAKE WORTH, FLORIDA 33467
LB-7741