



Project No. 1682.4 SAGAMORE BASIN STA-2 EAST

Construction Plans and Specifications Of **CITY OF PORT ST. LUCIE** **SAGAMORE BASIN** **STA-2 EAST** For **PORT ST. LUCIE, FL** Lying In **Section 20, Township 36 S., Range 40 E.** **St. Lucie County, Florida**

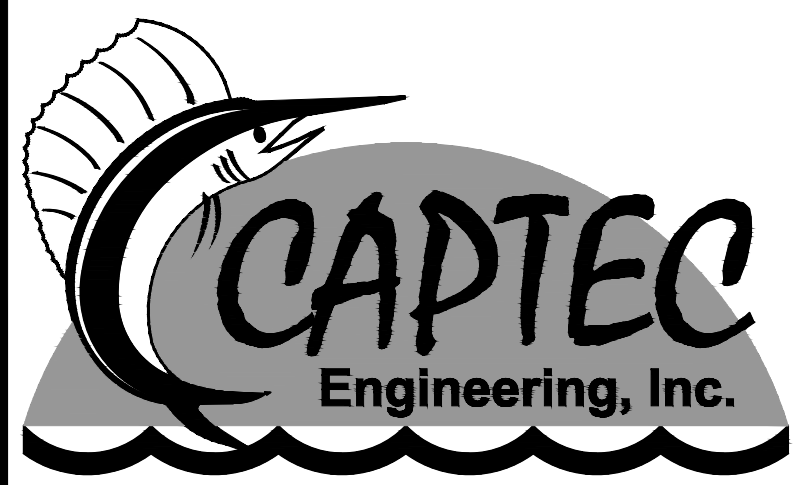


Location Map

NOTES:
THESE PLANS ARE IN ENGLISH UNITS
ALL ELEVATIONS HEREIN REFERENCE N.A.V.D.
1988 DATUM. ADD 1.48 FEET TO CONVERT TO
N.G.V.D. 1929 DATUM. ALL CONSTRUCTION IS TO
BE IN ACCORDANCE WITH FLORIDA DEPARTMENT
OF TRANSPORTATION STANDARDS AND
SPECIFICATIONS.

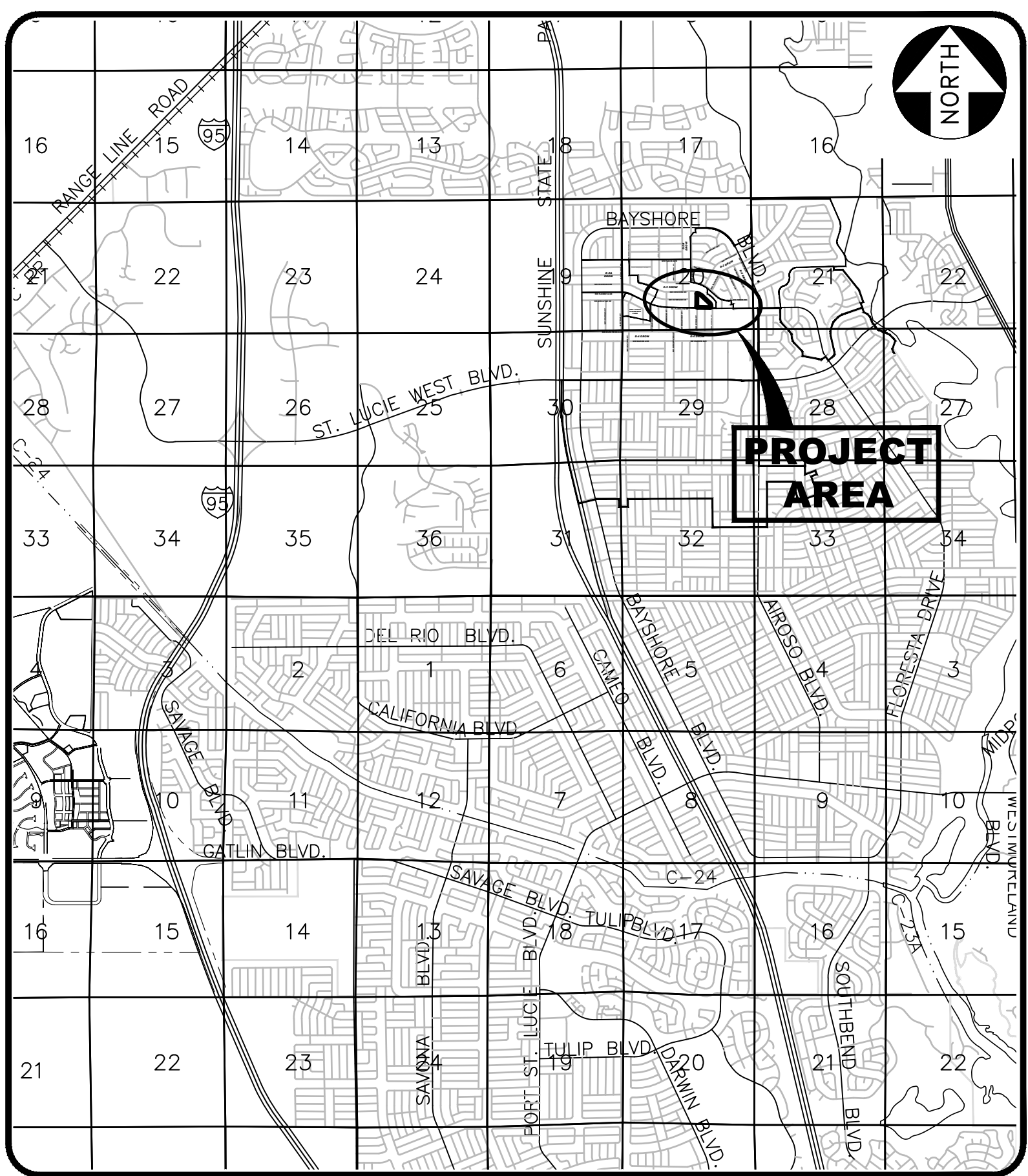
ENGINEER

MR. JOSEPH W. CAPRA, P.E.
CAPTEC ENGINEERING, INC.
301 N.W. FLAGLER AVENUE
STUART, FLORIDA 34994
PHONE: (772)-692-4344
FAX: (772)-692-4341

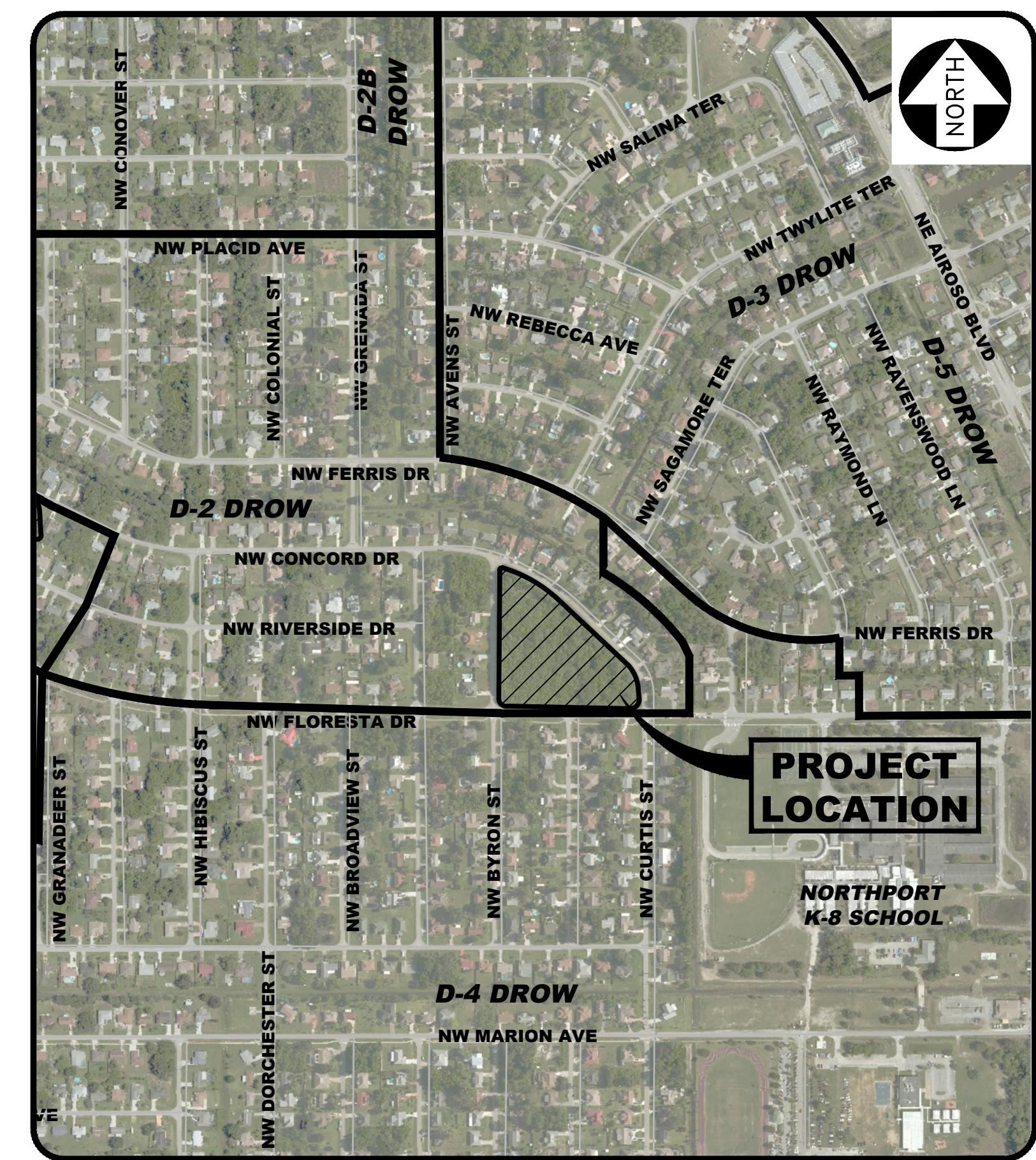


Civil Engineering Professionals
Engineering Business
No. EB-0007657

301 N.W. Flagler Avenue
Stuart, Florida 34994
Phone: (772) 692-4344
Fax: (772) 692-4341



Vicinity Map
N.T.S.



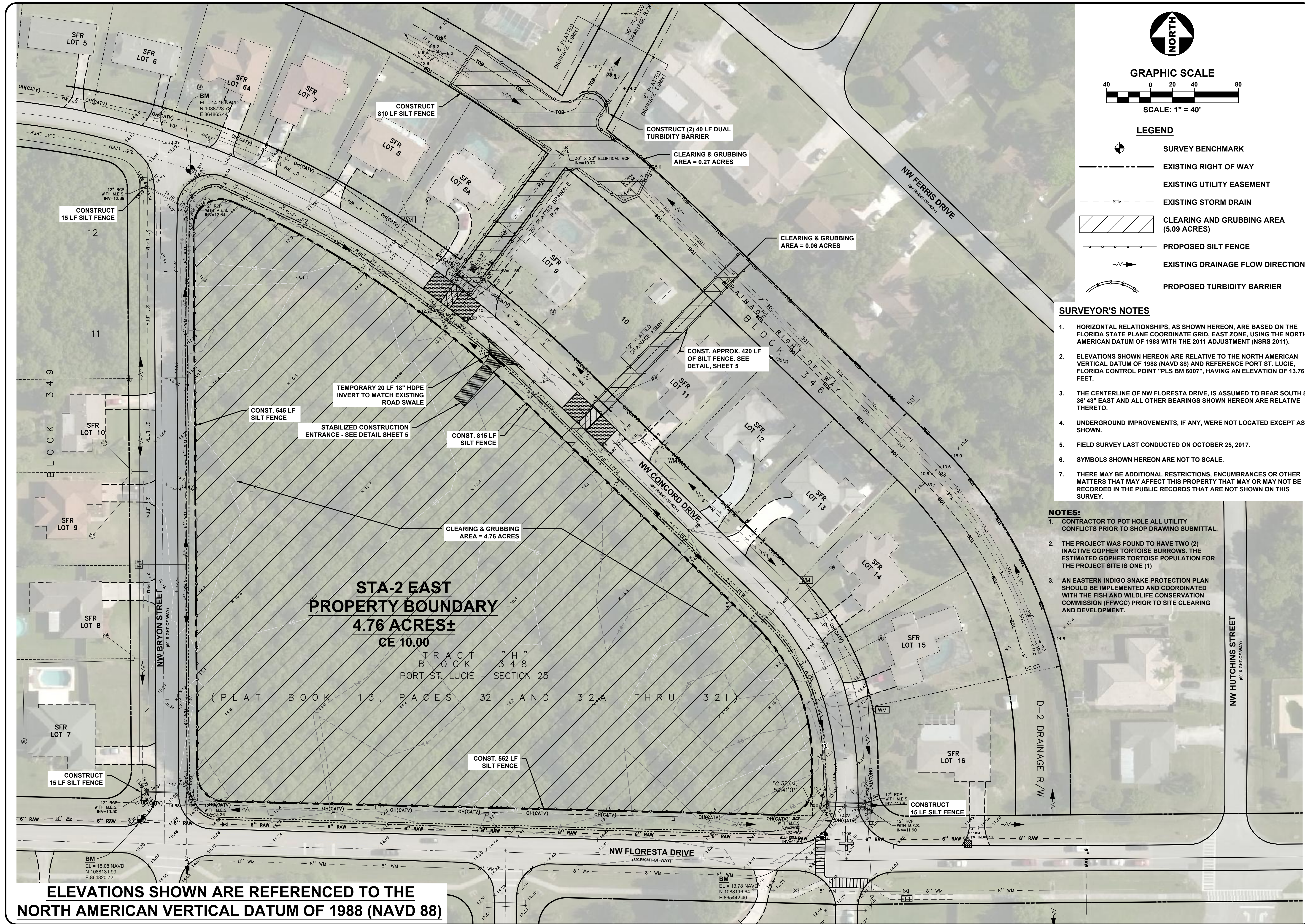
Site Map
N.T.S.

SHEET INDEX

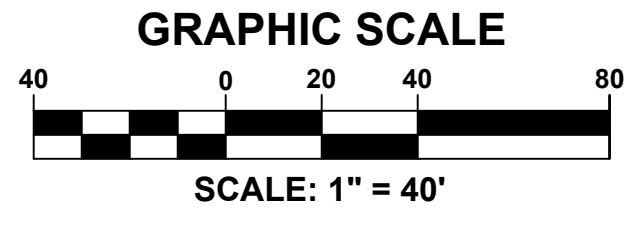
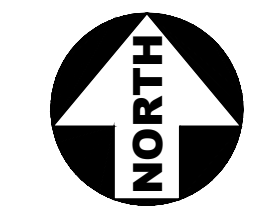
SHEET NUMBER	SHEET TITLE/DESCRIPTION
1	COVER
2	CLEARING AND GRUBBING / EROSION CONTROL PLAN STA-2 EAST
3	SITE PLAN STA-2 EAST
4	SECTIONS EAST
5	MISCELLANEOUS DETAILS STA-2 EAST
6	DETAILS, CROSS - SECTION, & WEIR SECTION STA-2 EAST
7	QUANTITIES
8	GENERAL NOTES STA-2 EAST
9	SURVEY

BID SET
8/19/2020





ELEVATIONS SHOWN ARE REFERENCED TO THE NORTH AMERICAN VERTICAL DATUM OF 1988 (NAVD 88)



- LEGEND**
- SURVEY BENCHMARK
 - EXISTING RIGHT OF WAY
 - EXISTING UTILITY EASEMENT
 - EXISTING STORM DRAIN
 - CLEARING AND GRUBBING AREA (5.09 ACRES)
 - PROPOSED SILT FENCE
 - EXISTING DRAINAGE FLOW DIRECTION
 - PROPOSED TURBIDITY BARRIER

- SURVEYOR'S NOTES**
- HORIZONTAL RELATIONSHIPS, AS SHOWN HEREON, ARE BASED ON THE FLORIDA STATE PLANE COORDINATE GRID, EAST ZONE, USING THE NORTH AMERICAN DATUM OF 1983 WITH THE 2011 ADJUSTMENT (NSRS 2011).
 - ELEVATIONS SHOWN HEREON ARE RELATIVE TO THE NORTH AMERICAN VERTICAL DATUM OF 1988 (NAVD 88) AND REFERENCE POINT ST. LUCIE, FLORIDA CONTROL POINT "PLS BM 6007", HAVING AN ELEVATION OF 13.76 FEET.
 - THE CENTERLINE OF NW FLORESTA DRIVE, IS ASSUMED TO BEAR SOUTH 88° 36' 43" EAST AND ALL OTHER BEARINGS SHOWN HEREON ARE RELATIVE THERETO.
 - UNDERGROUND IMPROVEMENTS, IF ANY, WERE NOT LOCATED EXCEPT AS SHOWN.
 - FIELD SURVEY LAST CONDUCTED ON OCTOBER 25, 2017.
 - SYMBOLS SHOWN HEREON ARE NOT TO SCALE.
 - THERE MAY BE ADDITIONAL RESTRICTIONS, ENCUMBRANCES OR OTHER MATTERS THAT MAY AFFECT THIS PROPERTY THAT MAY OR MAY NOT BE RECORDED IN THE PUBLIC RECORDS THAT ARE NOT SHOWN ON THIS SURVEY.

- NOTES:**
- CONTRACTOR TO POT HOLE ALL UTILITY CONFLICTS PRIOR TO SHOP DRAWING SUBMITTAL.
 - THE PROJECT WAS FOUND TO HAVE TWO (2) INACTIVE GOPHER TORTOISE BURROWS. THE ESTIMATED GOPHER TORTOISE POPULATION FOR THE PROJECT SITE IS ONE (1)
 - AN EASTERN INDIGO SNAKE PROTECTION PLAN SHOULD BE IMPLEMENTED AND COORDINATED WITH THE FISH AND WILDLIFE CONSERVATION COMMISSION (FWCC) PRIOR TO SITE CLEARING AND DEVELOPMENT.

301 N.W. Flagler Ave.
Stuart, Florida 34984
Phone: (772) 692-4344
Fax: (772) 692-4341

Engineering Business
No. EP-007657
Civil Engineering Professionals

DATE: 8/19/20
DRAWN BY: MMH
DESIGNED BY: RRR
CHECKED BY: JWC
PROJECT NO.: 1682.4
HORZ SCALE: 1" = 40'
VERT SCALE: N/A
1682.4-02-ERBN CTRL PLAN.dwg

NO.	DATE	BY	BID SET	REVISIONS
1	8/19/20	JWC		

SCALE VERIFICATION

1
0

SOLID BAR IS EQUAL TO ONE INCH ON ORIGINAL DRAWING. AS SHOWN DIMENSIONS ACCORDINGLY

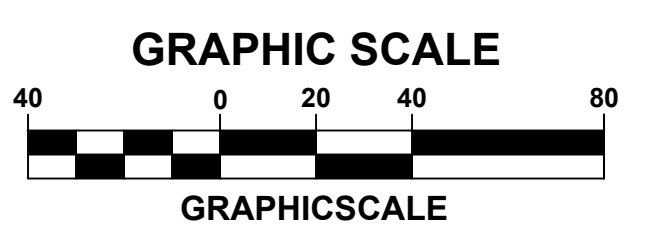
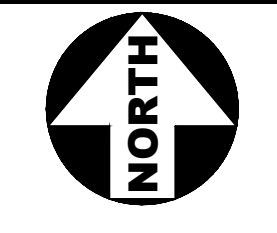
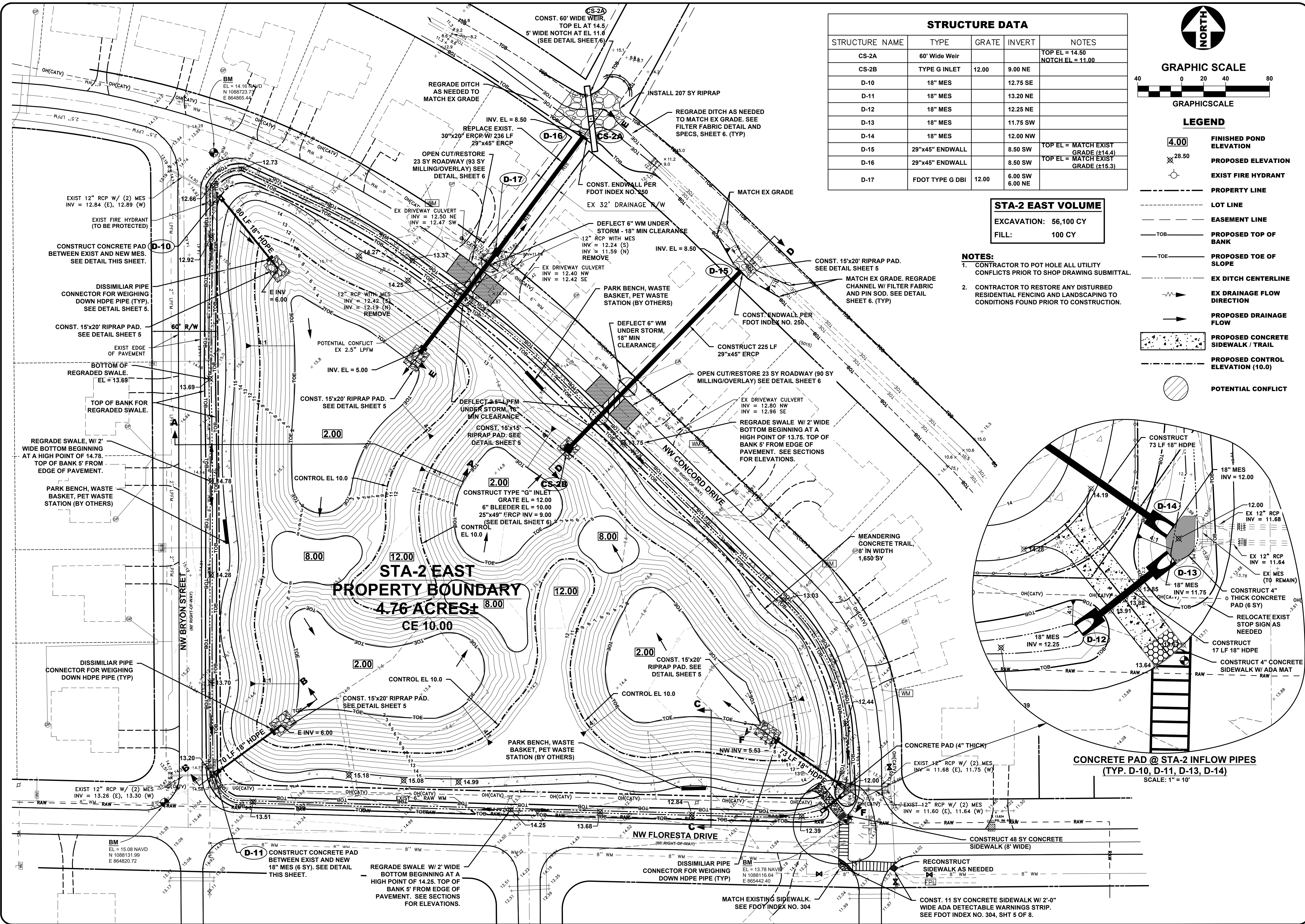
**CITY OF PORT ST. LUCIE
SAGAMORE BASIN
PORT ST. LUCIE, FL**

**CLEARING AND GRUBBING /
EROSION CONTROL PLAN
STA-2 EAST**

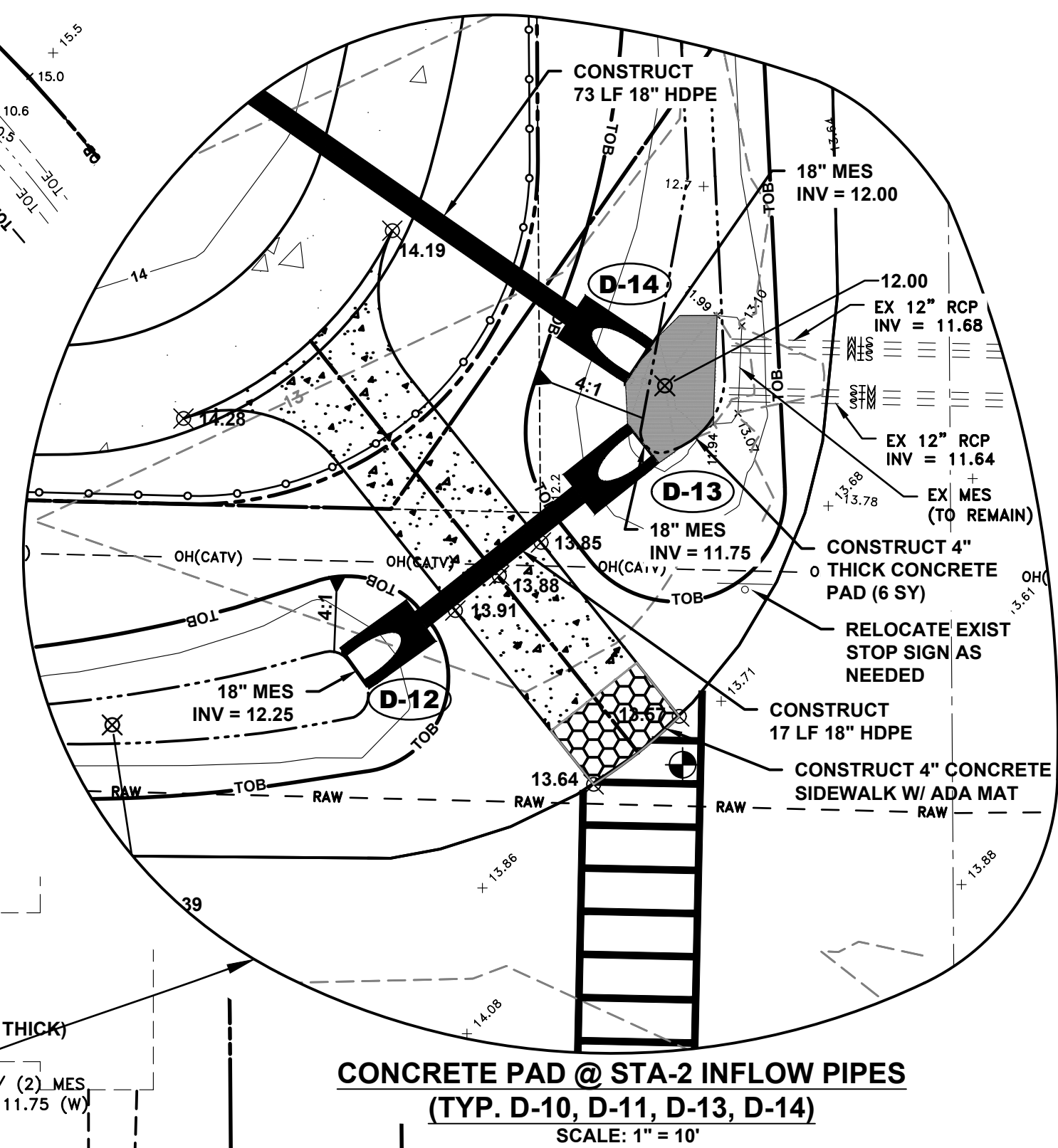
JOSEPH W. CAPRA, P.E.
301 N.W. Flagler Ave.
Stuart, Florida 34994
P.E. No. 37638

Printed Date:
JOB No.: 1682.4
SHEET
2 OF 9

P:\1682.4 - City of Sagamore Basin STA-2 EAST\02-ERBN CTRL PLAN.dwg, 8/19/2020 9:53:34 AM, AutoCAD PDF (General Documentation).pc3



- LEGEND**
- 4.00 FINISHED POND ELEVATION
 - 28.50 PROPOSED ELEVATION
 - X EXIST FIRE HYDRANT
 - PROPERTY LINE
 - LOT LINE
 - EASEMENT LINE
 - TOB --- PROPOSED TOP OF BANK
 - TOE --- PROPOSED TOE OF SLOPE
 - EX DITCH CENTERLINE
 - EX DRAINAGE FLOW DIRECTION
 - PROPOSED DRAINAGE FLOW
 - PROPOSED CONCRETE SIDEWALK / TRAIL
 - PROPOSED CONTROL ELEVATION (10.0)
 - POTENTIAL CONFLICT



CAPTEC Engineering, Inc.
Civil Engineering Professionals

901 N.W. Flagler Ave.
Stuart, Florida 34984
Phone: (772) 692-4344
Fax: (772) 692-4341

DATE: 8/19/20
DRAWN BY: MWH
DESIGNED BY: RRK
CHECKED BY: JWC
PROJECT NO.: 1682.4
JOB SCALE: 1" = 40'
VERT. SCALE: N/A
1682.403_Site Plan.dwg

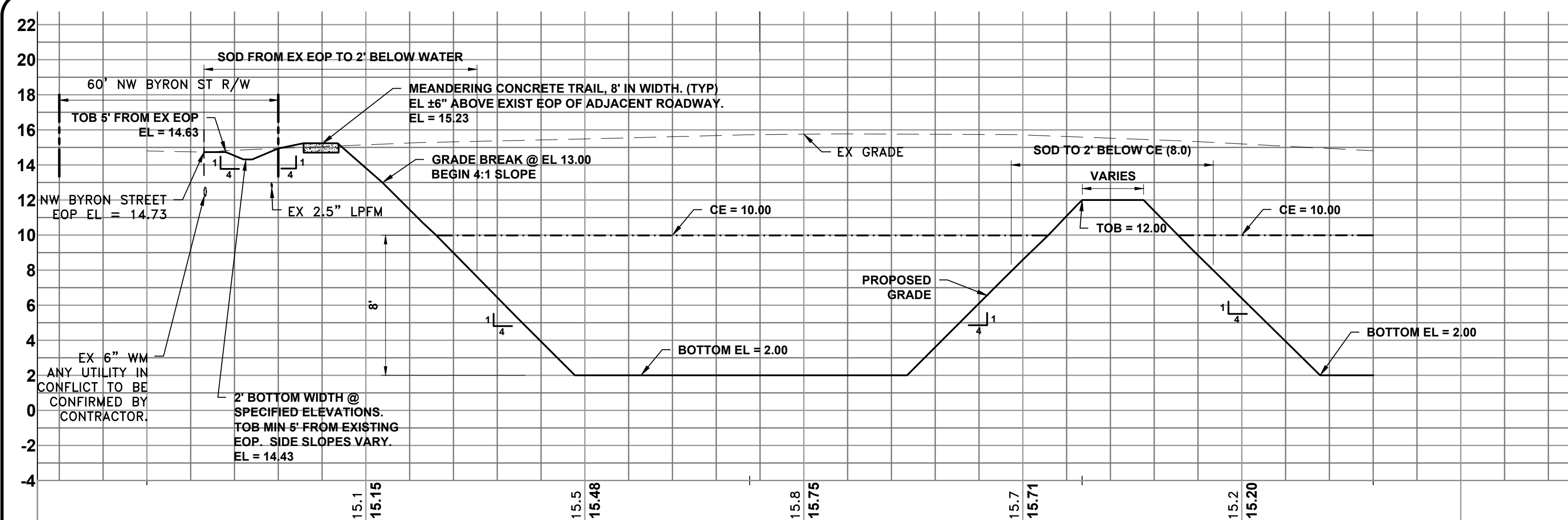
NO.	DATE	JWC	BY	BID SET	REVISIONS
1	8/19/20	JWC			

SCALE VERIFICATION
1
SOLID BAR IS EQUAL TO ONE INCH ON ORIGINAL DRAWING. ADJUST ALL SCALED ACCORDINGLY.

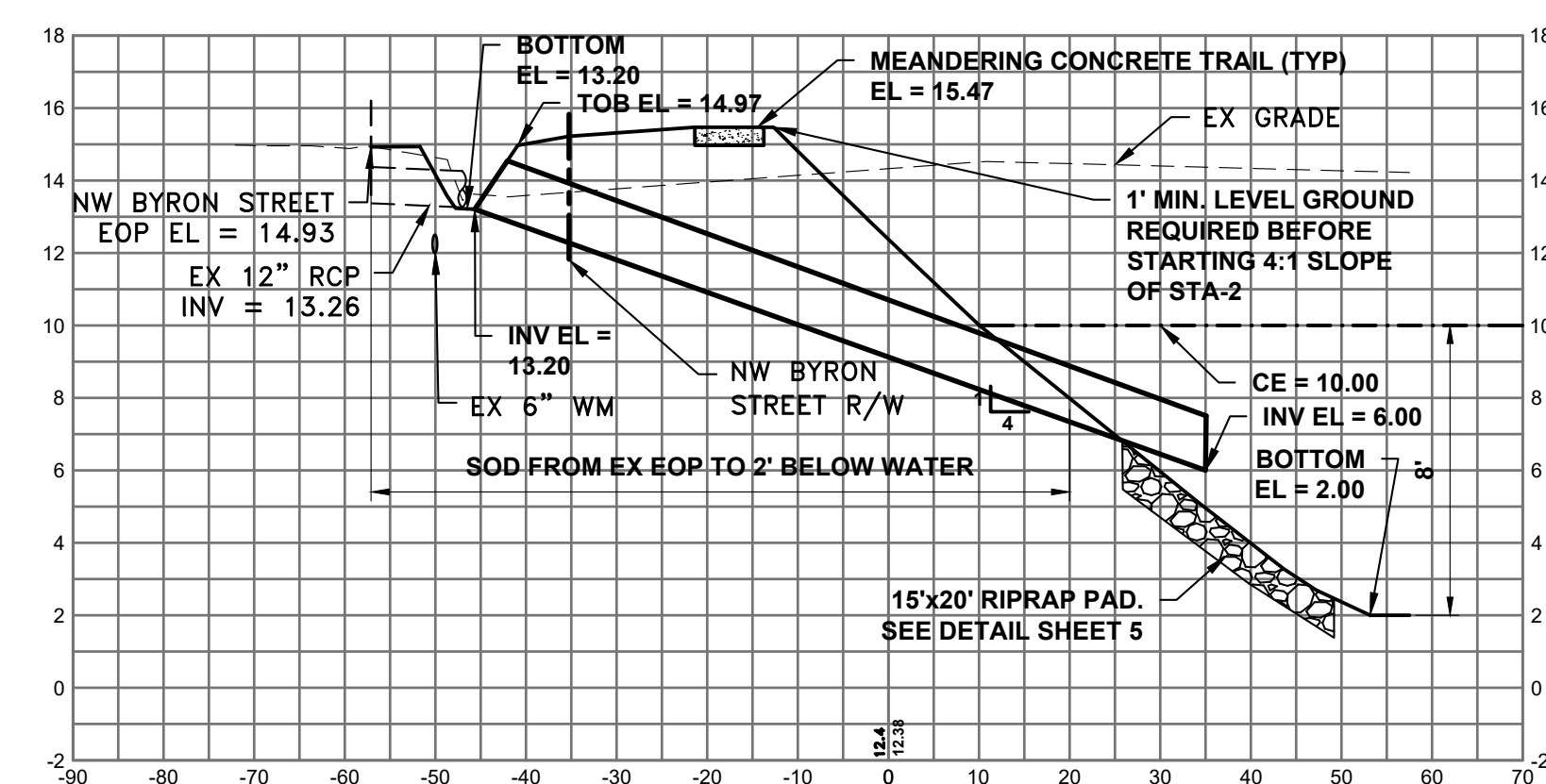
**CITY OF PORT ST. LUCIE
SAGAMORE BASIN
PORT ST. LUCIE, FL
SITE PLAN
STA-2 EAST**

JOSEPH W. CAPRA, P.E.
301 N.W. Flagler Ave.
Stuart, Florida 34984
P.E. No. 37638

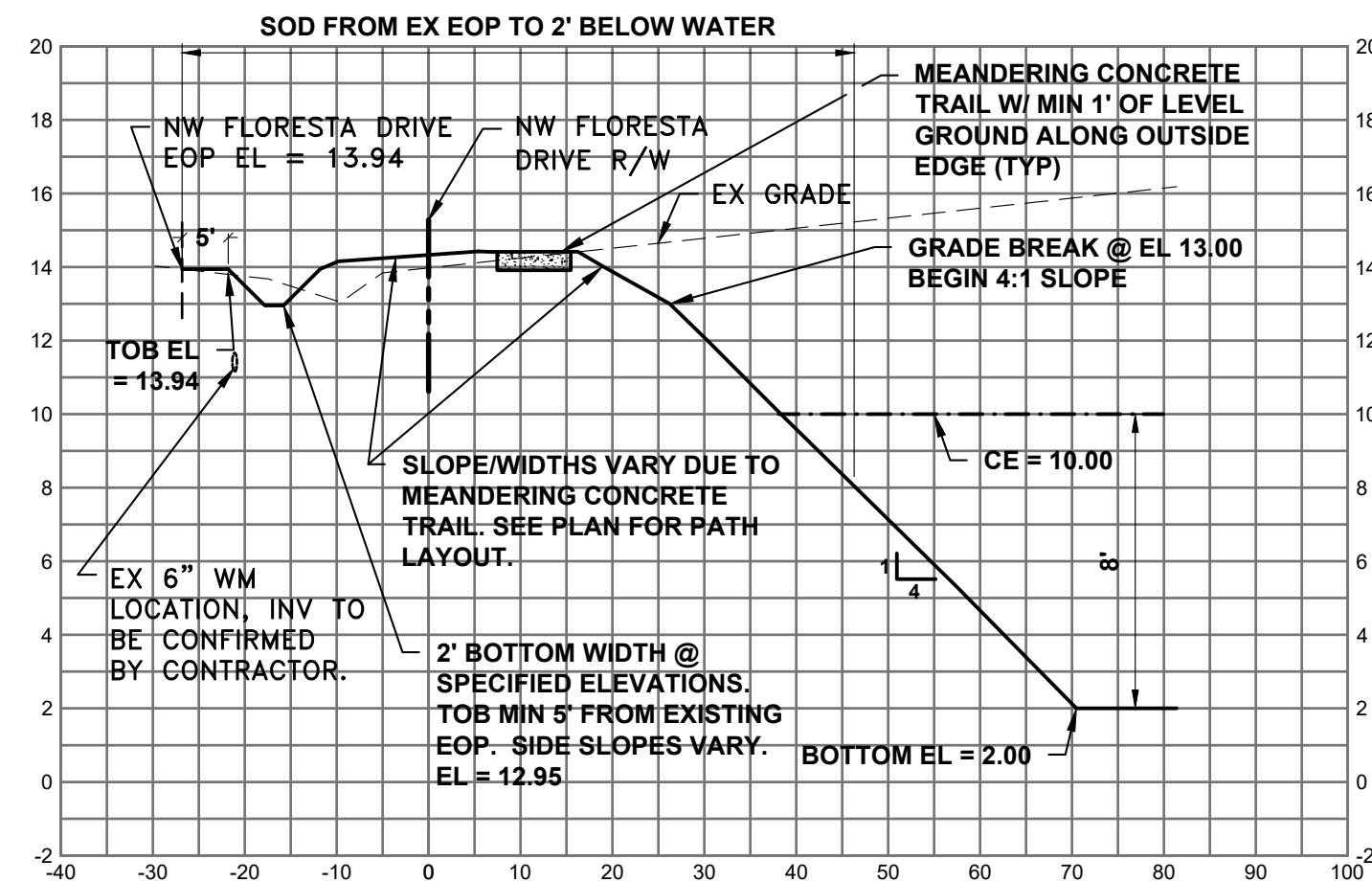
Printed Date:
JOB No.: **1682.4**
SHEET **3** OF **9**



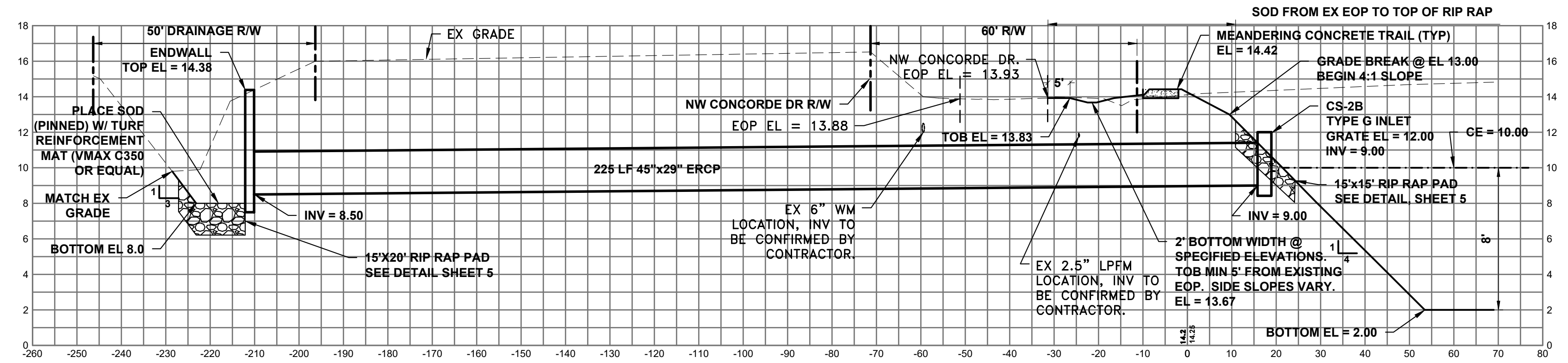
SECTION A
SCALE H: 1" = 20'
SCALE V: 1" = 5'



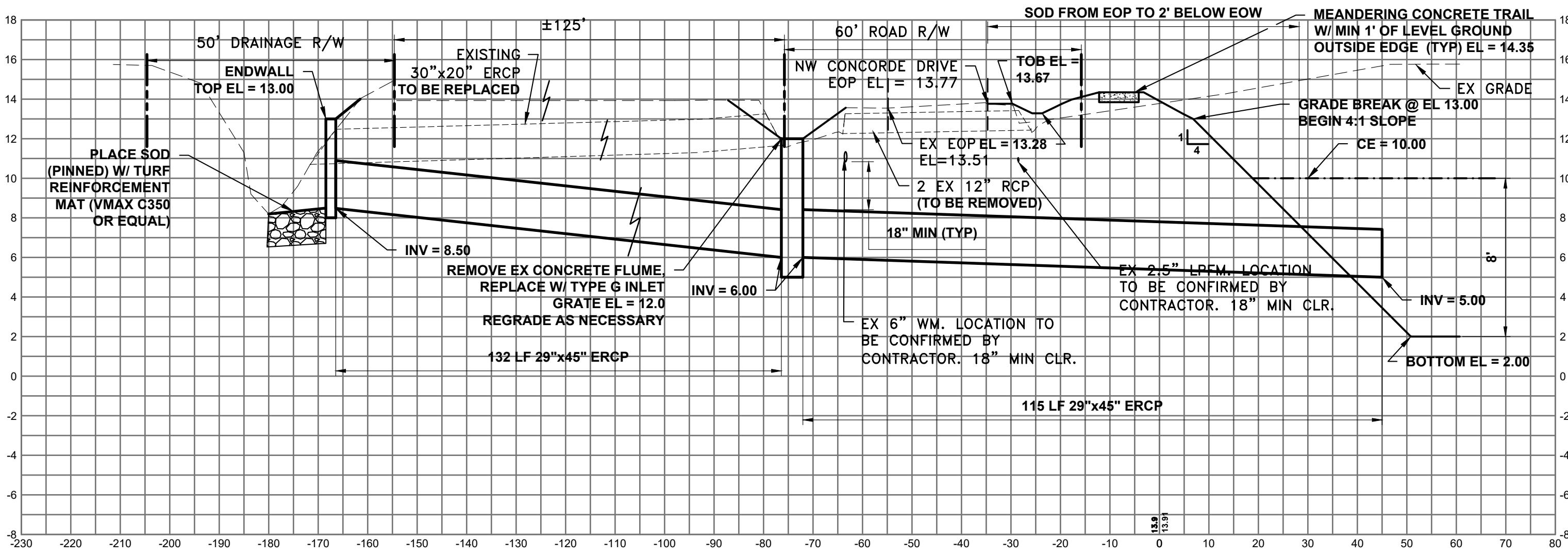
SECTION B
SCALE H: 1" = 20'
SCALE V: 1" = 5'



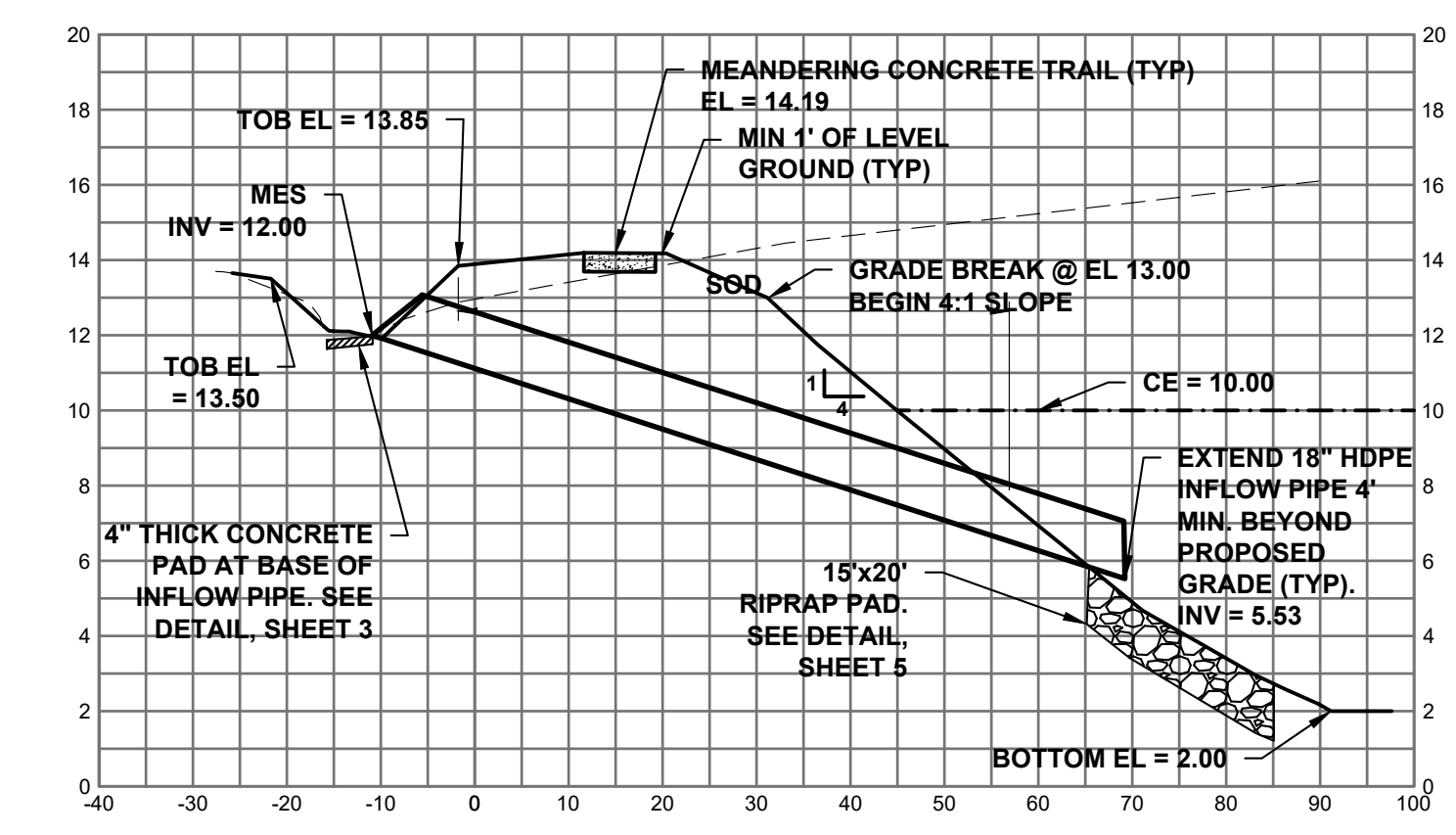
SECTION C
SCALE H: 1" = 20'
SCALE V: 1" = 5'



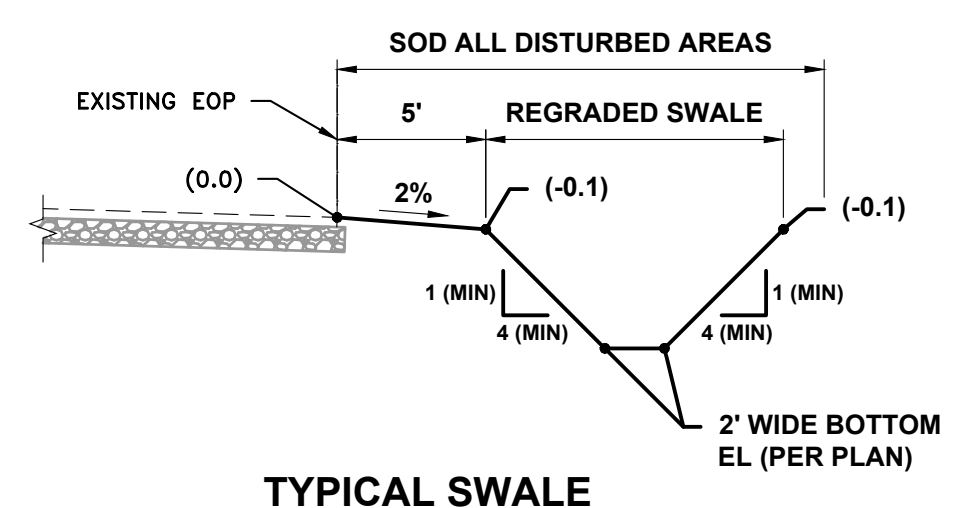
SECTION D
SCALE H: 1" = 20'
SCALE V: 1" = 5'



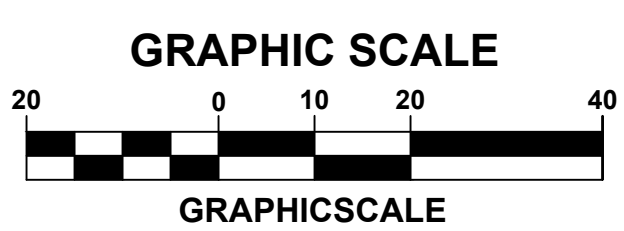
SECTION E
SCALE H: 1" = 20'
SCALE V: 1" = 5'



SECTION F
SCALE H: 1" = 20'
SCALE V: 1" = 5'



TYPICAL SWALE REGRADING
SCALE: NTS



- LEGEND**
- PROPERTY LINE
 - LOT LINE
 - EASEMENT LINE
 - EX DITCH CENTERLINE
 - EX DRAINAGE FLOW DIRECTION

*CONTRACTOR TO POTHOLE EXISTING UTILITIES PRIOR TO SHOP DRAWING SUBMITTAL

NOTE: ALL DISTURBED AREAS TO BE STABILIZED WITH SOD.



DATE:	8/19/2020
DRAWN BY:	MMH
DESIGNED BY:	RRK
CHECKED BY:	JWC
PROJECT NO.:	1682.4
HORIZ. SCALE:	1" = 20'
VERT. SCALE:	1" = 5'
1682.4-04-SECTIONS.dwg	

NO.	DATE	BY	BID SET REVISIONS
1	8/19/20	JWC	

SCALE VERIFICATION

1
0

SOLID BAR IS EQUAL TO ONE INCH ON ORIGINAL DRAWING. DIMENSIONS AGREE ACCORDINGLY

CITY OF PORT ST. LUCIE
SAGAMORE BASIN
PORT ST. LUCIE, FL

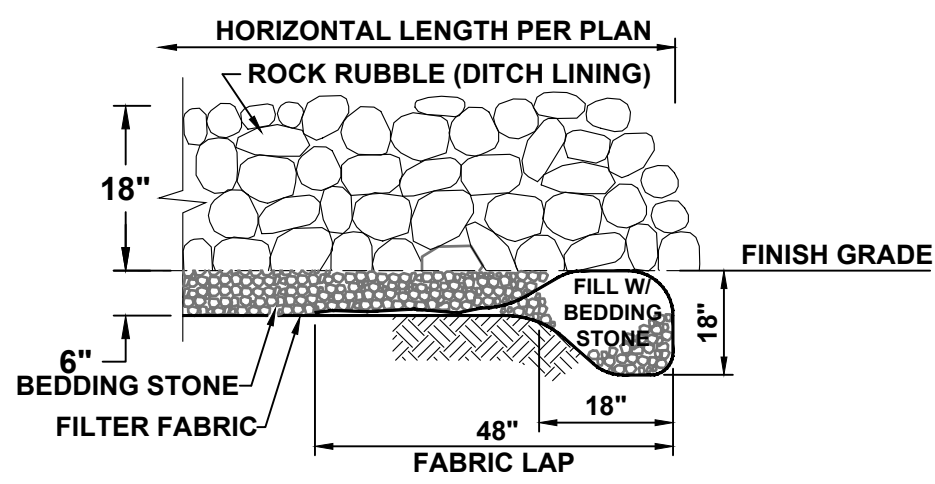
SECTIONS EAST

JOSEPH W. CAPRA, P.E.
301 N.W. Flagler Ave.
Stuart, Florida 34994
P.E. No. 37638

Printed Date:

JOB No.: **1682.4**
SHEET
4 OF **9**

THIS DOCUMENT, TOGETHER WITH THE CONCEPTS AND DESIGNS PRESENTED HEREIN, IS AN INSTRUMENT OF SERVICE. IT IS INTENDED ONLY FOR THE SPECIFIC PURPOSE AND CLIENT FOR WHICH IT WAS PREPARED. REUSE OF AND IMPROPER RELIANCE ON THIS DOCUMENT WITHOUT WRITTEN AUTHORIZATION AND ADOPTION BY CAPTEC ENGINEERING, INC. SHALL BE WITHOUT LIABILITY TO CAPTEC ENGINEERING, INC.

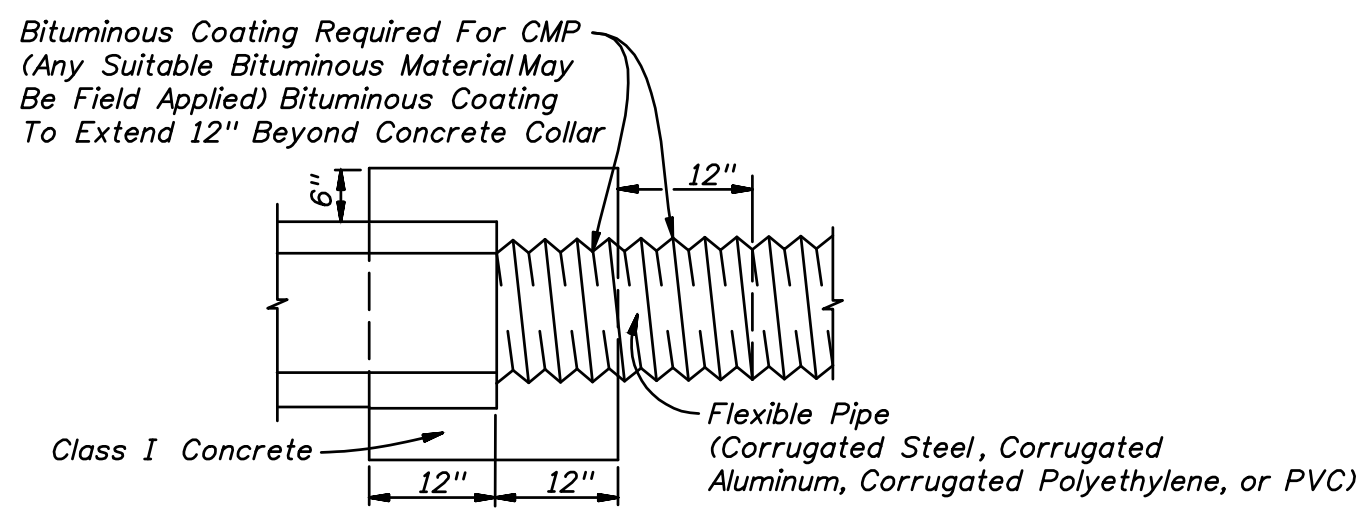


NOTES:

1. INSTALLATION SHALL BE IN ACCORDANCE WITH THESE SPECIFICATIONS. THE AREAS TO RECEIVE RIPRAP SHALL BE LINED WITH FILTER FABRIC AND 6" OF BEDDING STONE. ROCK RUBBLE SHALL BE PLACED IN 2 LAYERS FOR A TOTAL DEPTH OF 18" TO PRODUCE WELL GRADED MASS OF STONE WITH THE MINIMUM PRACTICAL PERCENTAGE OF VOIDS.
2. THE ROCK RUBBLE SHALL BE BROKEN STONE CONFORMING TO THESE SPECIFICATIONS.
3. THE BEDDING STONE SHALL CONFORM TO SECTION 901-1 OF THE FDOT SPECIFICATIONS FOR NUMBER 4 COURSE AGGREGATE.
4. CONTRACTOR SHALL USE WOVEN GEOTEXTILE AMOCO FABRIC TYPE 2044 OR EQUAL NON-BIODEGRADABLE.

RIPRAP DETAIL

N.T.S.

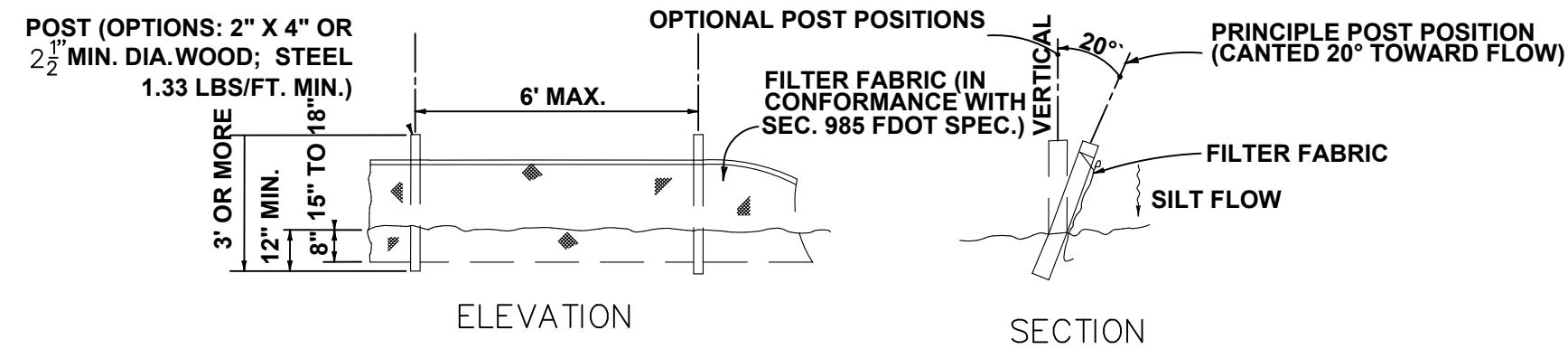


Note: Cost of concrete and bituminous coating to be included in contract unit price for either new pipe or Mitered End Section.

Alternate connection must be approved by the State Drainage Engineer.

- A concrete jacket shall not be used to join:
- (a) metal pipe of dissimilar materials
 - (b) flexible pipe when the minimum cover required in accordance with Index No. 205 cannot be obtained

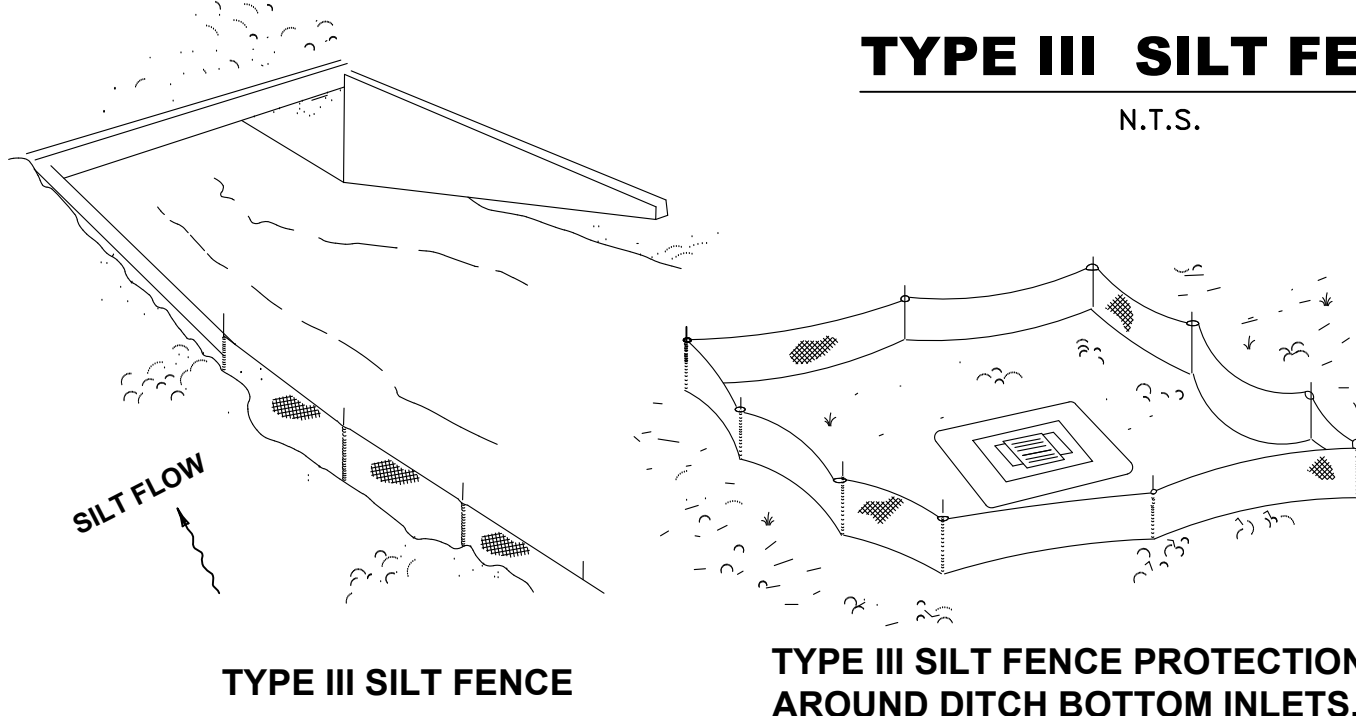
DISSIMILAR TYPES CONCRETE JACKET FOR CONNECTING DISSIMILAR TYPES OF PIPE AND CONCRETE PIPES WITH DISSIMILAR JOINTS



NOTE: SILT FENCE TO BE PAID FOR UNDER THE CONTRACT UNIT PRICE FOR STAKED SILT FENCE (LF).

TYPE III SILT FENCE

N.T.S.



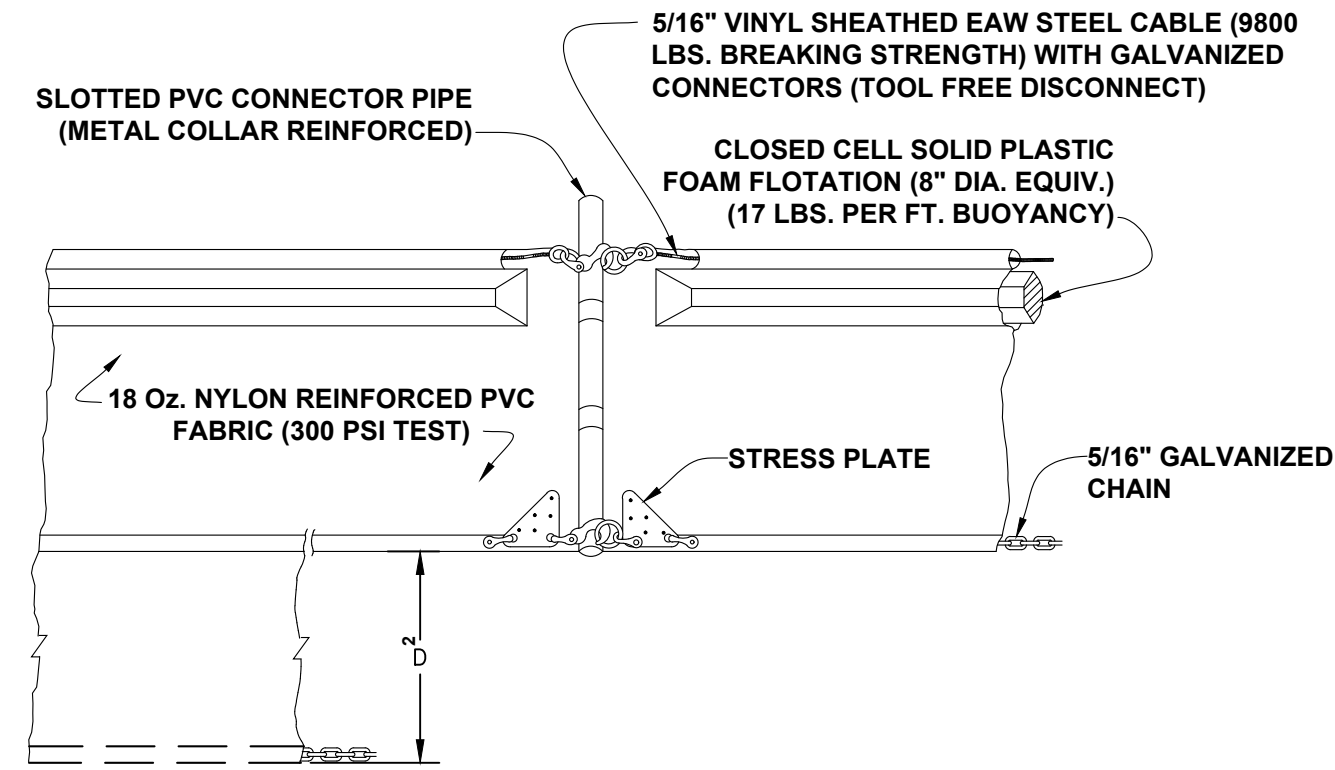
TYPE III SILT FENCE

TYPE III SILT FENCE PROTECTION AROUND DITCH BOTTOM INLETS.

DO NOT DEPLOY IN A MANNER THAT SILT FENCES WILL ACT AS A DAM ACROSS PERMANENT FLOWING WATERCOURSES. SILT FENCES ARE TO BE USED AT UPLAND LOCATIONS AND TURBIDITY BARRIERS USED AT PERMANENT BODIES OF WATER.

SILT FENCE APPLICATIONS

N.T.S.



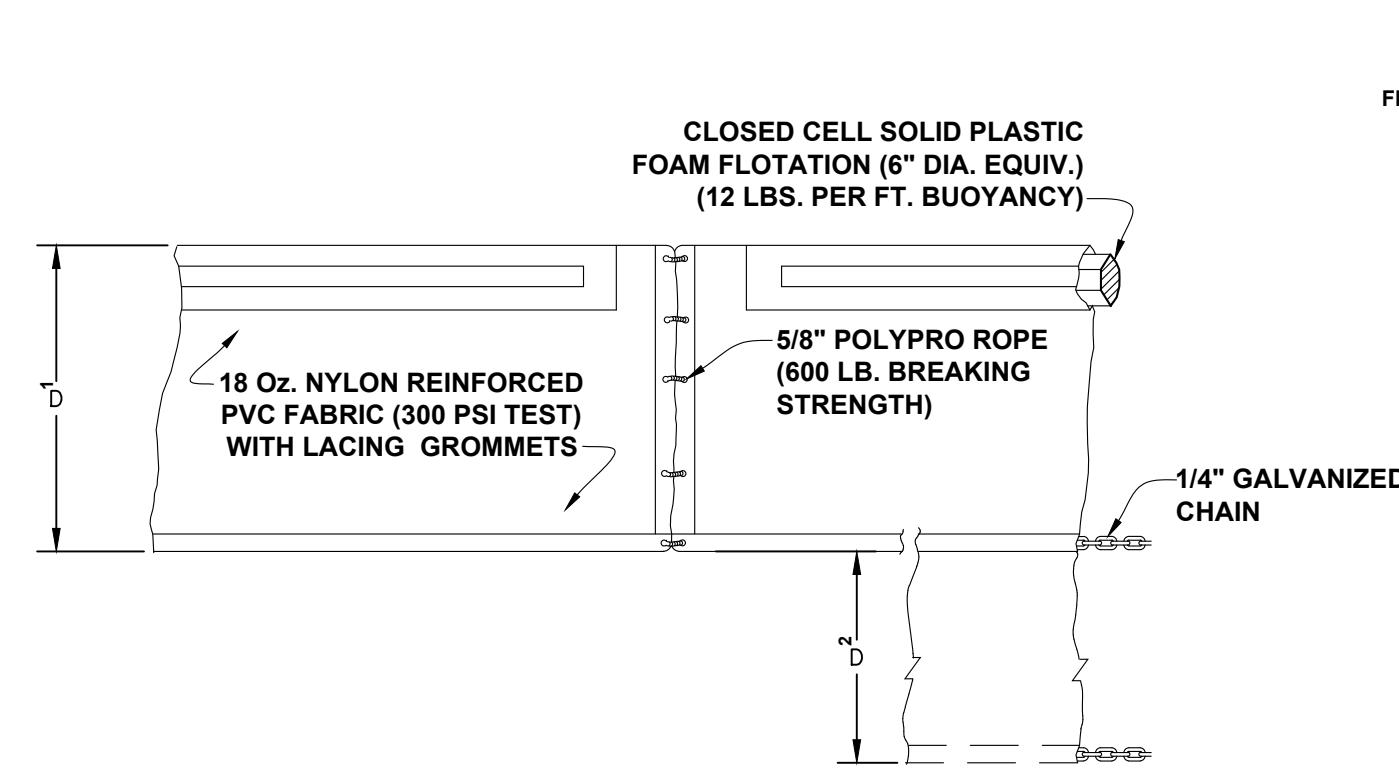
TYPE II

$D_s = 5'$ STD. (SINGLE PANEL FOR DEPTHS 5' OR LESS)
 $D_s = 5'$ STD. (ADDITIONAL PANEL FOR DEPTHS > 5')
CURTAIN TO REACH BOTTOM UP TO DEPTHS OF 10 FEET.
TWO (2) PANELS TO BE USED FOR DEPTHS GREATER THAN 10 FEET UNLESS SPECIAL DEPTH CURTAINS SPECIFICALLY CALLED FOR IN THE PLANS OR AS DETERMINED BY THE ENGINEER.

NOTICE: COMPONENTS OF TYPES I AND 11 MAY BE SIMILAR OR IDENTICAL TO PROPRIETARY DESIGNS. ANY INFRINGEMENT ON THE PROPRIETARY RIGHTS OF THE DESIGNER SHALL BE THE SOLE RESPONSIBILITY OF THE USER. SUBSTITUTIONS FOR TYPES I AND II SHALL BE AS APPROVED BY THE ENGINEER.

FLOATING TURBIDITY BARRIERS

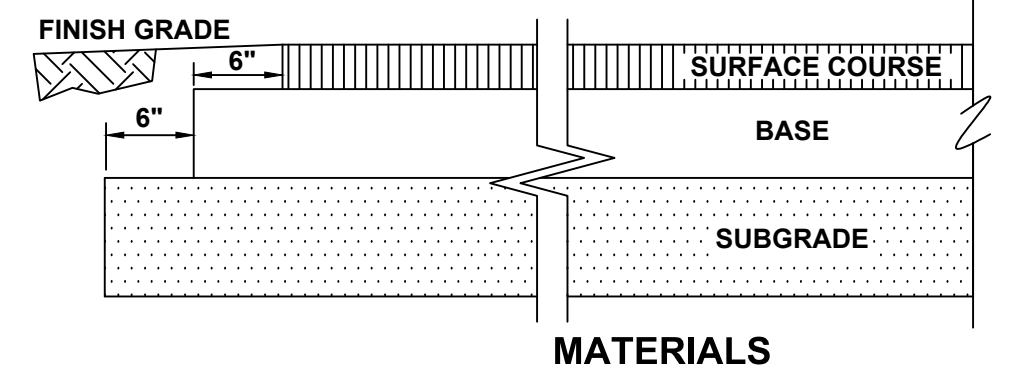
N.T.S.



TYPE I

FLOATING TURBIDITY BARRIERS

N.T.S.

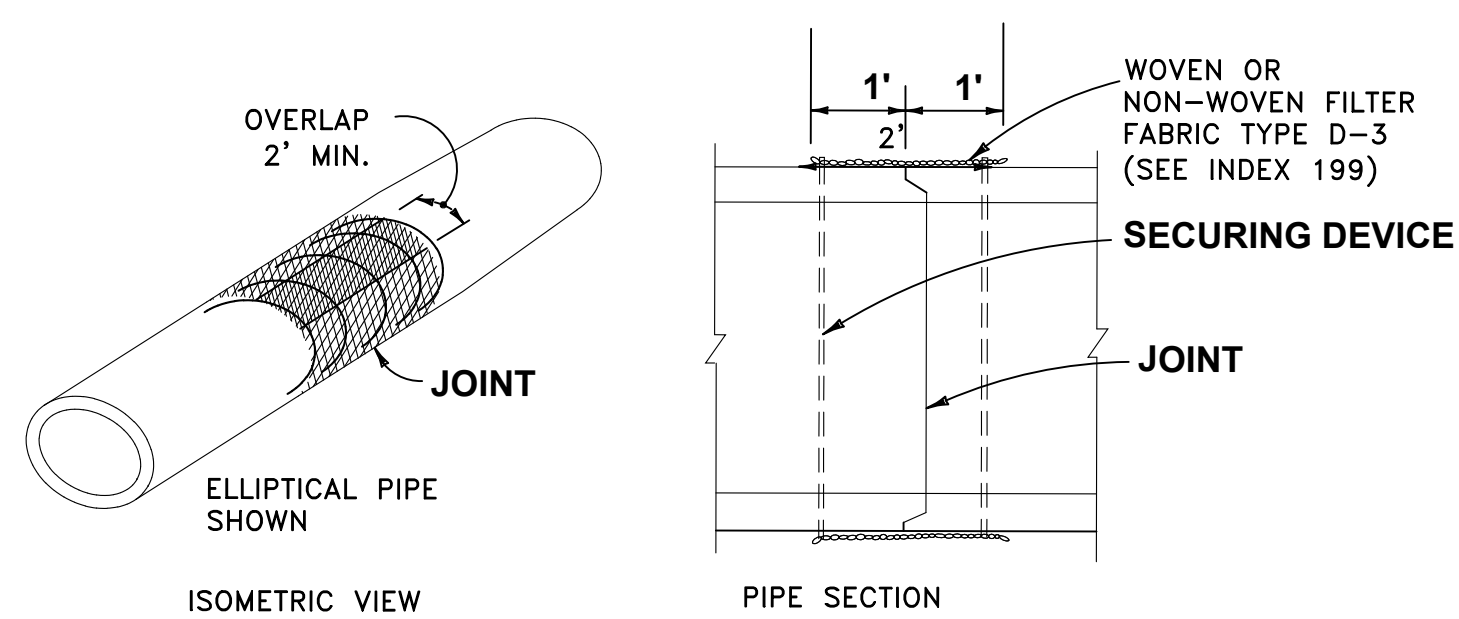


MATERIALS

PARKING LOT/STACK LANES ASPHALT SECTION
SURFACE COURSE: 2" TYPE SP-9.5 ASPHALT PAVEMENT (2 LIFTS)
BASE: 8" COQUINA BASE, LBR 100, UNIFORMLY COMPACTED TO 98% OF THE T-180 MAX. DRY DENSITY
SUBGRADE: 12" STABILIZED SUBGRADE, LBR 40, TYPICAL (TYPE B STABILIZATION) COMPACTED TO 98% OF THE T-180 MAX. DRY DENSITY

PAVEMENT SECTION

N.T.S.



COST OF FILTER FABRIC JACKET TO BE INCLUDED IN COST OF PIPE CULVERTS

FOR ALL PIPE TYPES - CONCRETE PIPE SHOWN

ALL STORM PIPE JOINTS SHALL BE WRAPPED

STORM PIPE JOINTS SHALL BE WRAPPED ACCORDING TO THIS DETAIL. COMPLETELY WRAP THE OUTSIDE OF EACH JOINT WITH EITHER A WOVEN OR NON-WOVEN FILTER FABRIC WHICH PROVIDES AN AOS OF A NO. 70 TO NO. 100 SIEVE (150 TO 212 μ m). A MINIMUM OF 24 INCHES (600 mm) IN WIDTH AND A LENGTH TO PROVIDE A MINIMUM OVERLAP OF 24 INCHES (600 mm). SECURE FILTER FABRIC AGAINST THE OUTSIDE OF THE PIPE BY STEEL OR PLASTIC STRAPPING OR BY OTHER METHODS APPROVED BY THE ENGINEER. (REF: F.D.O.T. INDEX 280 FOR DETAILS OF CONSTRUCTION).

FILTER FABRIC JACKET DETAIL

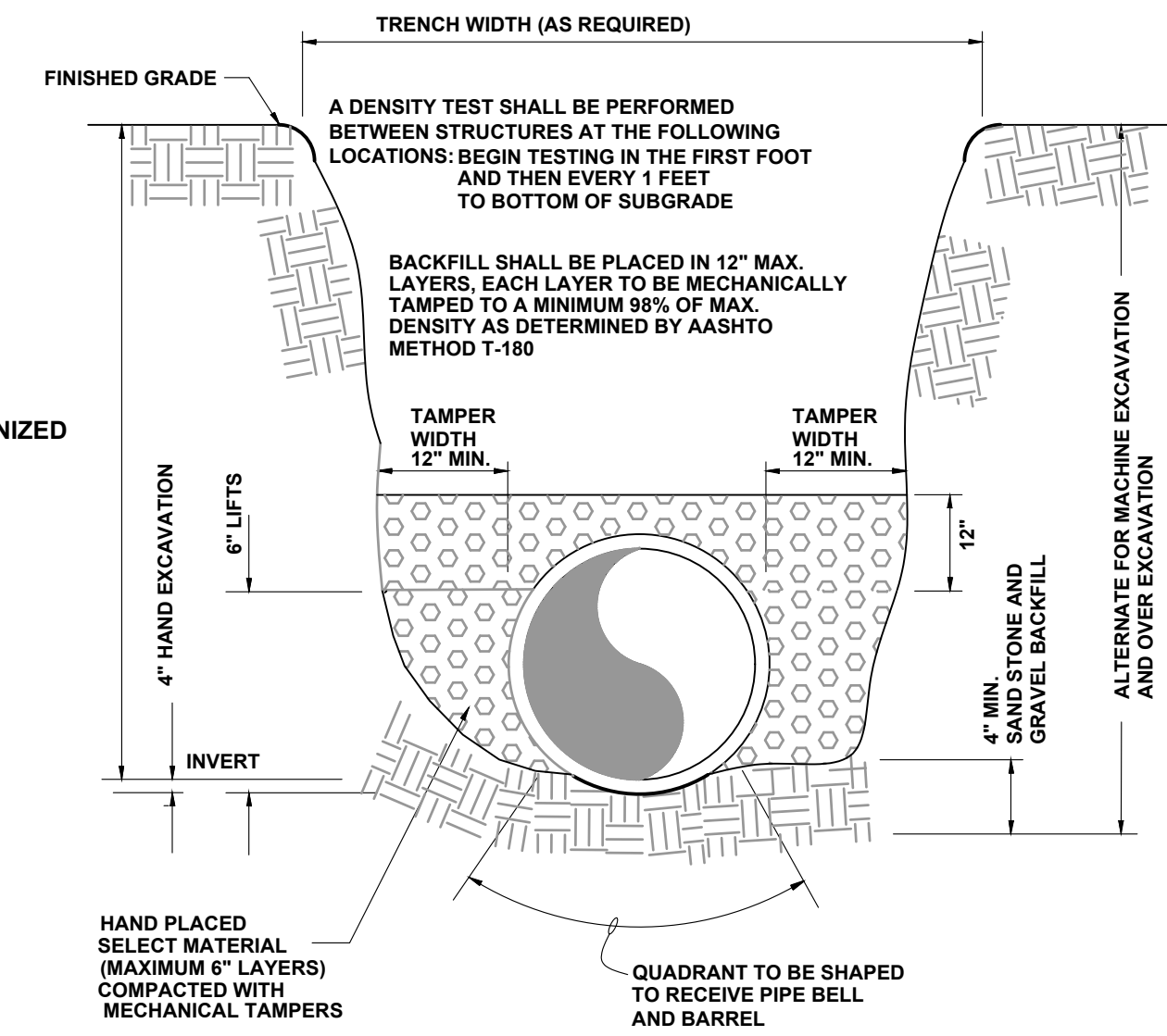
N.T.S.

LOCATION OF PUBLIC UTILITY SYSTEM FACILITIES IN ACCORDANCE WITH PSLUSD SPECIFICATIONS			
OTHER PIPE	HORIZONTAL SEPARATION	CROSSINGS (1)	JOINT SPACING @ CROSSINGS (FULL JOINT CENTERED)
GRAVITY OR PRESSURE SANITARY SEWER, SANITARY SEWER FORCE MAIN, RECLAIMED WATER (3), VACUUM SANITARY SERVICE	 10' MINIMUM	 18" MINIMUM	 ALTERNATE 6' MINIMUM
ALL OTHER FACILITIES, INCLUDING BUT NOT LIMITED TO: STORM SEWER, STORMWATER FORCE MAIN, RECLAIMED WATER (2), TELEPHONE, CABLE TV, POWER, ETC.	 5' MINIMUM	 18" MINIMUM	 ALTERNATE 3' MINIMUM
ON-SITE SEWAGE TREATMENT AND DISPOSAL SYSTEM	10' MINIMUM

1. WATER MAIN SHOULD CROSS OVER OTHER PIPE. WHEN WATER MAIN MUST BE BELOW OTHER PIPE, THE MINIMUM SEPARATION IS 18".
2. RECLAIMED WATER REGULATED UNDER PART III OF CHAPTER 62-610, F.A.C.
3. RECLAIMED WATER NOT REGULATED UNDER PART III OF CHAPTER 62-610, F.A.C.

UTILITY SEPARATION

N.T.S.

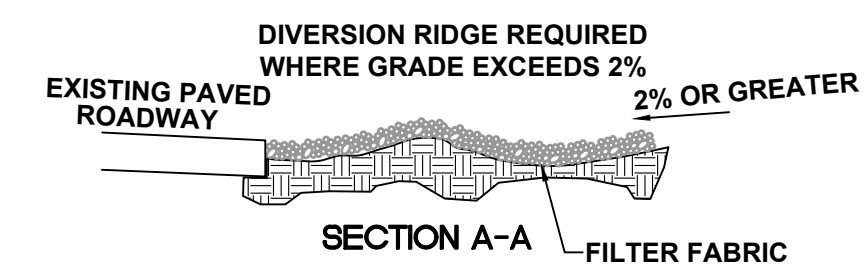


NOTES:

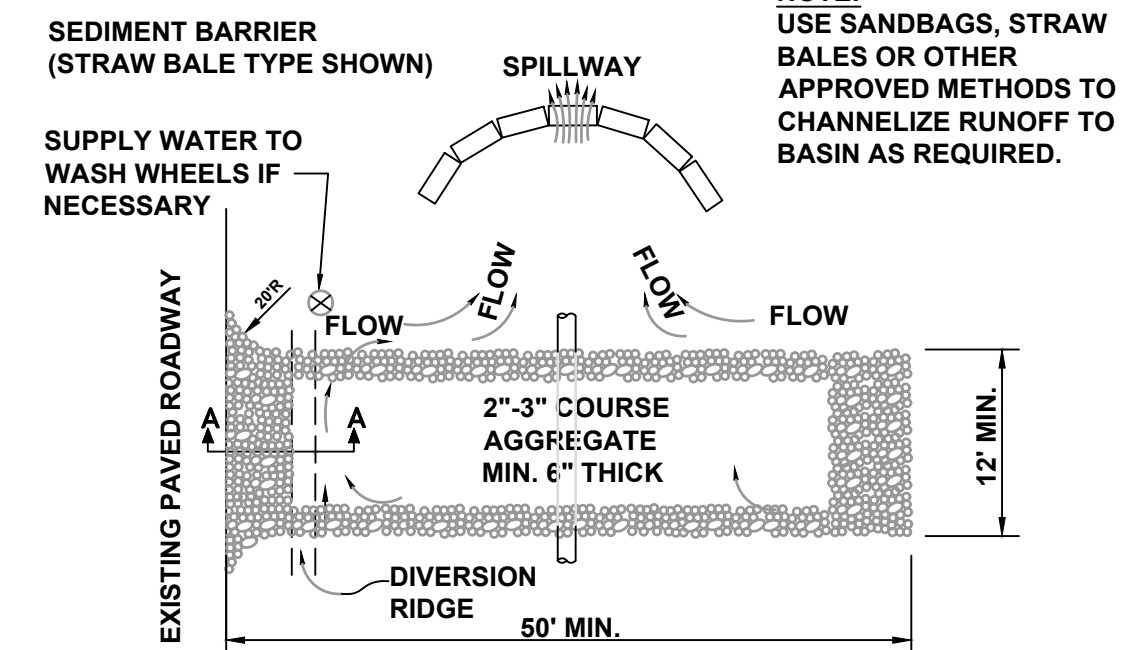
1. FOR TRENCHES REQUIRING SHEETING, SHORING, STAY BRACING, TRENCH JACKS OR TRENCH BOX, DIMENSIONS SHALL BE TAKEN FROM THE INSIDE FACE OF THE SUPPORTS.
2. IF THE MAXIMUM TRENCH WIDTH MUST BE EXCEEDED, THE AREA OUTSIDE OF THE MAXIMUM EMBEDMENT SHALL BE COMPACTED TO FINAL BACKFILL REQUIREMENTS. IF THE PIPE IS INSTALLED IN A COMPACTED EMBANKMENT, THE EMBANKMENT SHALL BE IN PLACE AND COMPACTED TO 12" MIN. COVER BEFORE INSTALLATION OF UTILITY.
3. IF BEDDING IS REQUIRED TO BRING TRENCH BOTTOM UP TO GRADE AND PROVIDE UNIFORM AND ADEQUATE LONGITUDINAL SUPPORT UNDER THE PIPE, THEN A MINIMUM COMPACTED DEPTH OF 4 TO 6 INCHES OF SELECT EMBEDMENT MATERIAL IS REQUIRED.
4. THE CONTRACTOR SHALL COMPLY WITH REQUIREMENTS OF THE FLORIDA TRENCH SAFETY ACT.
5. ALL UTILITY EXCAVATING, BACKFILLING AND COMPACTING SHALL BE IN ACCORDANCE WITH SECTION 02220 OF THE CITY OF PORT ST. LUCIE UTILITY SYSTEMS DEPARTMENT TECHNICAL SPECIFICATIONS AND CONSTRUCTION STANDARDS, LATEST EDITION.

UTILITY TRENCH DETAIL

N.T.S.



SECTION A-A



NOTES:

1. THE ENTRANCE SHALL BE MAINTAINED IN A CONDITION THAT WILL PREVENT TRACKING OR FLOWING OF SEDIMENT ONTO PUBLIC RIGHTS-OF-WAY. THIS MAY REQUIRE TOP DRESSING, REPAIR AND/OR CLEANOUT OF ANY MEASURES USED TO TRAP SEDIMENT.
2. WHEN NECESSARY, WHEELS SHALL BE CLEANED PRIOR TO ENTRANCE ONTO PUBLIC RIGHTS-OF-WAY.
3. WHEN WASHING IS REQUIRED, IT SHALL BE DONE ON AN AREA STABILIZED WITH CRUSHED STONE THAT DRAINS INTO AN APPROVED SEDIMENT BASIN.

STABILIZED CONSTRUCTION ENTRANCE

301 N.W. Flagler Ave.
Stuart, Florida 34994
Phone: (772) 692-4344
Fax: (772) 692-4341

CAPEC
Engineering, Inc.
Civil Engineering Professionals
No. EB000707

DATE:	8/19/20
DRAWN BY:	MWH
DESIGNED BY:	RRK
CHECKED BY:	JMC
PROJECT NO.:	1682.4
HORIZ. SCALE:	N/A
VERT. SCALE:	N/A
1682.4-06-DETAILS 1	

NO.	DATE	BY	REVISIONS
1	8/19/20	JMC	BID SET

SCALE VERIFICATION

0 1 2

SOLID BAR IS EQUAL TO ONE INCH ON ORIGINAL DRAWING. ADJUST ALL SCALED ACCORDINGLY.

CITY OF PORT ST. LUCIE
SAGAMORE BASIN
PORT ST. LUCIE, FLORIDA

MISCELLANEOUS DETAILS
STA-2 EAST

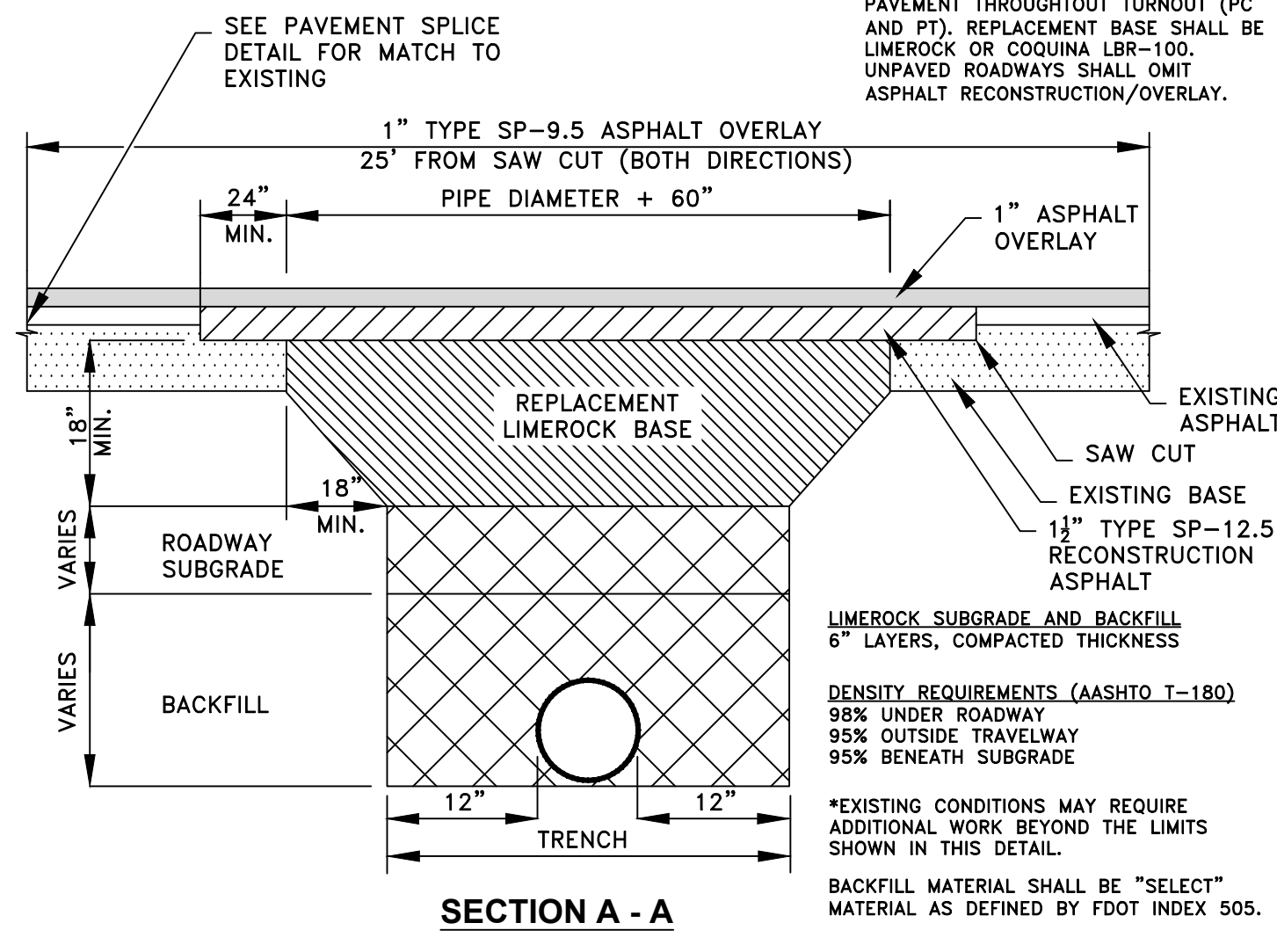
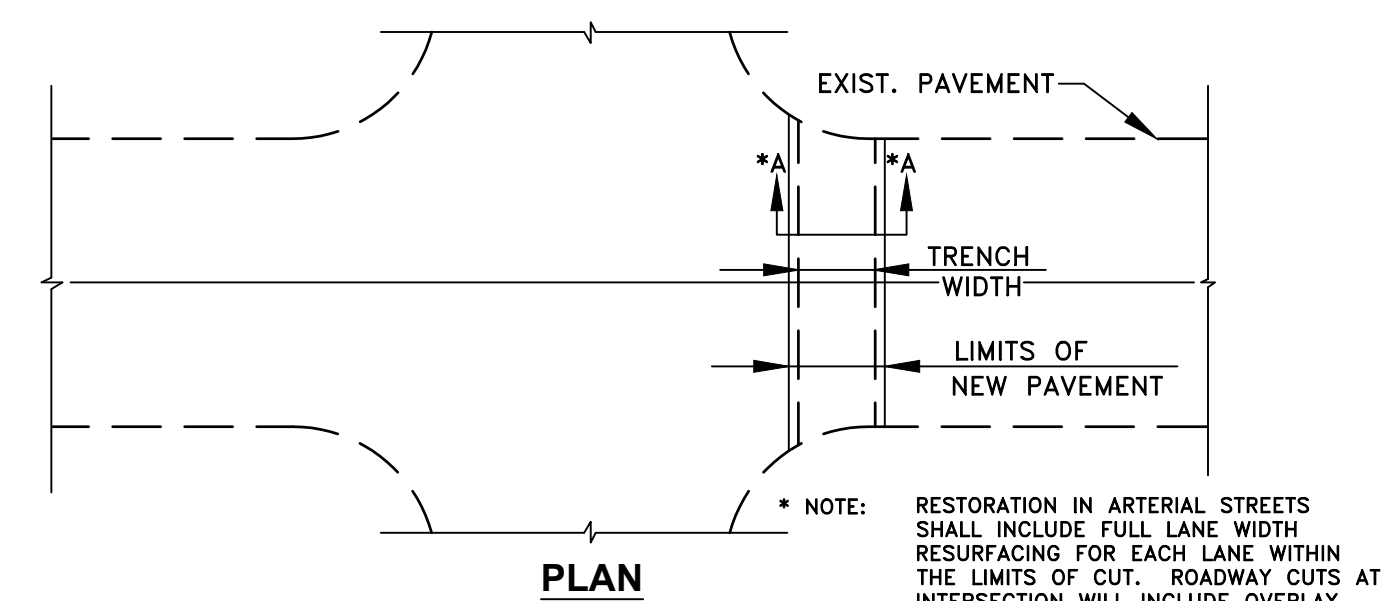
JOSEPH W. CAPRA, P.E.
301 N.W. Flagler Ave.
Stuart, Florida 34994
P.E. No. 37638

Printed Date:

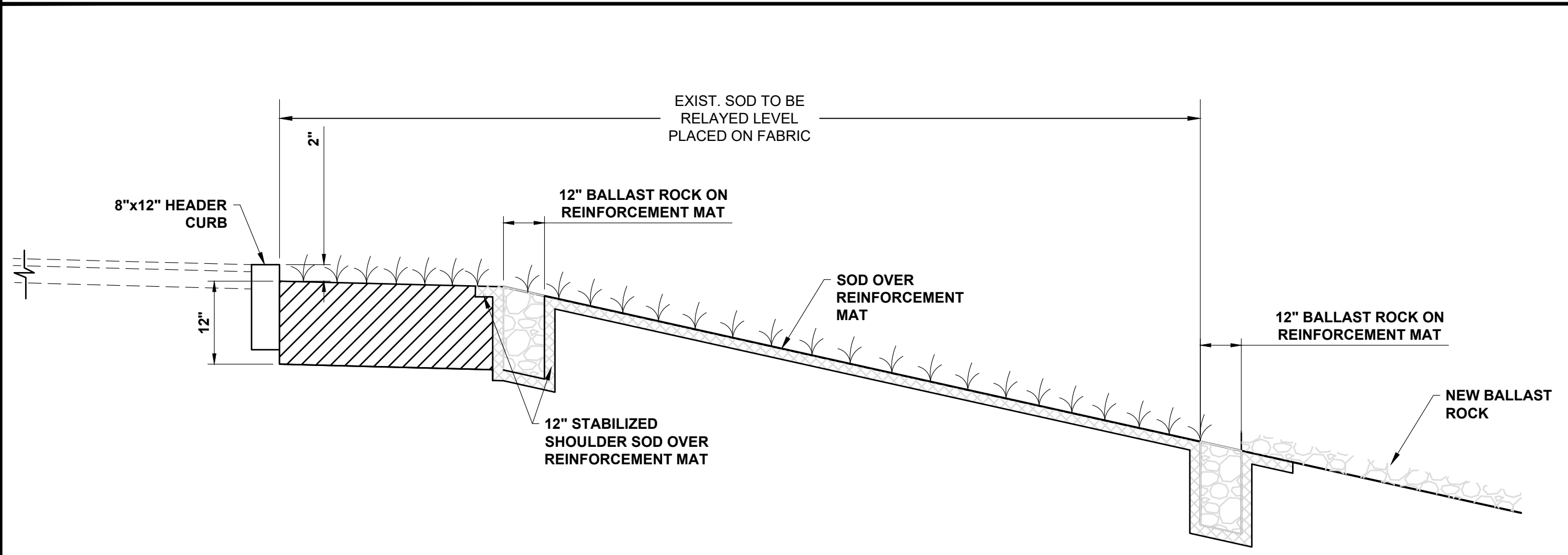
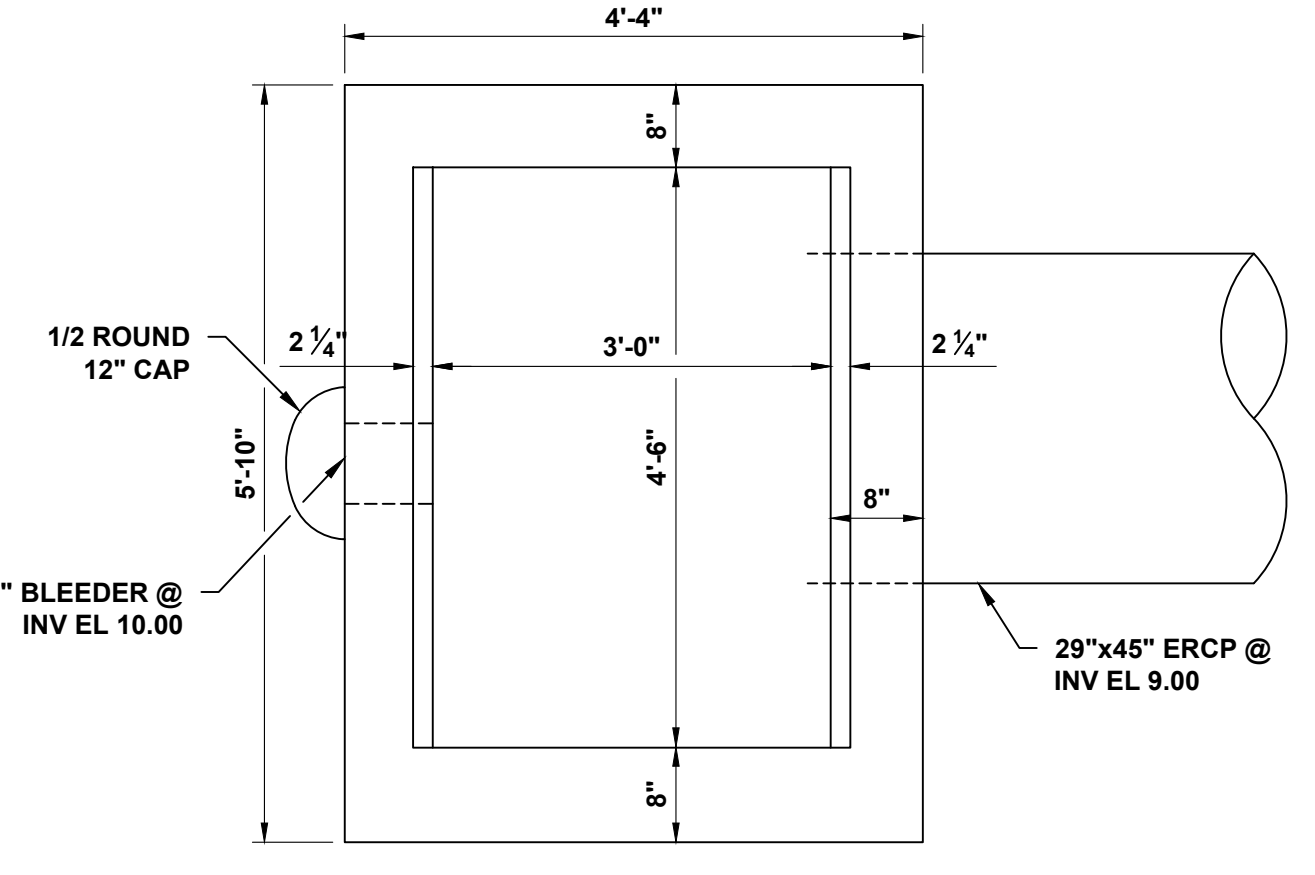
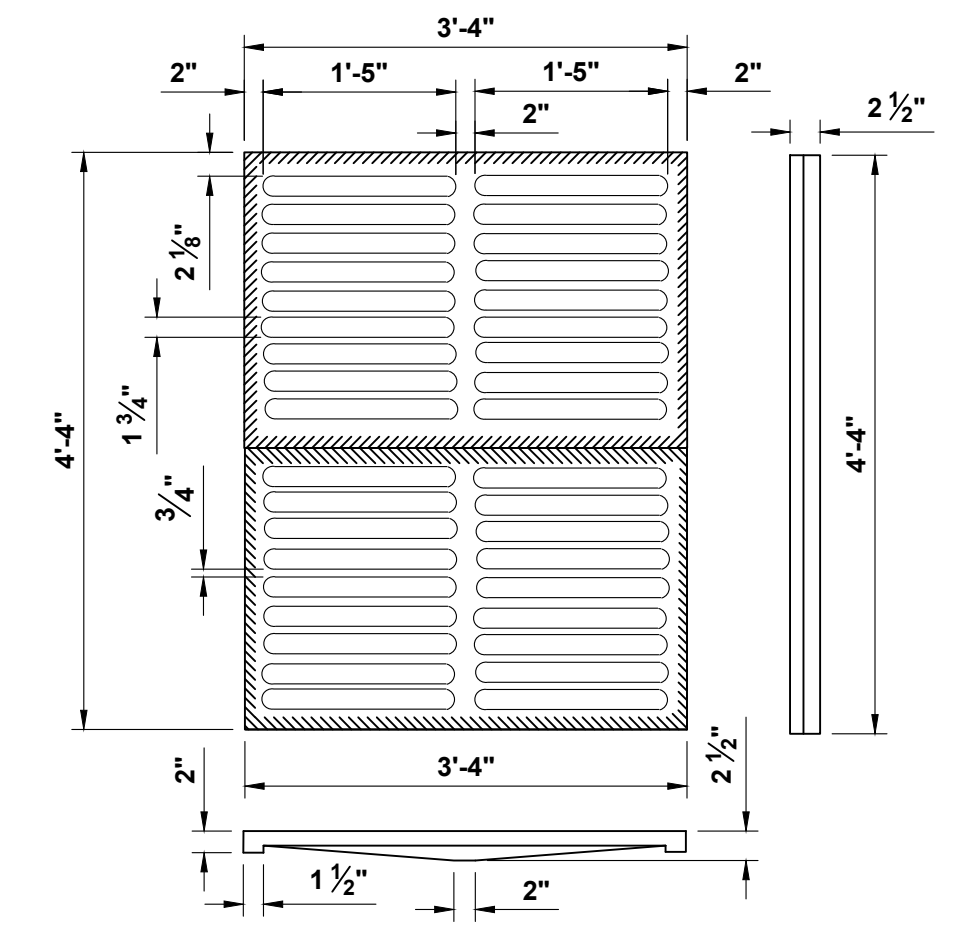
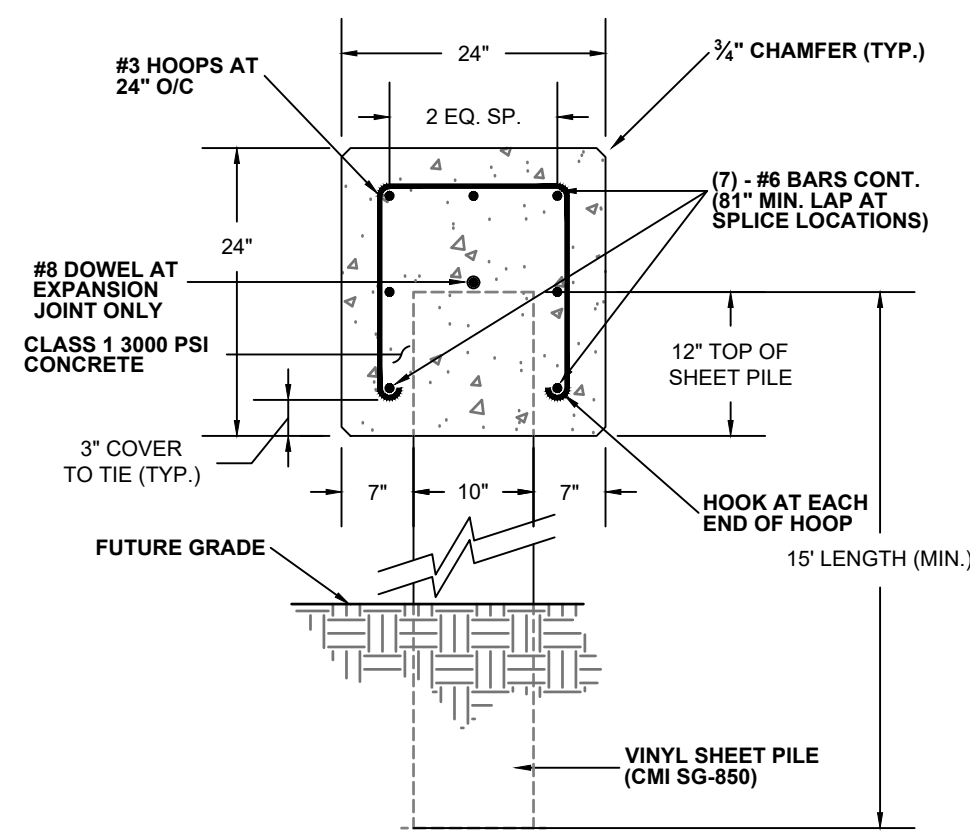
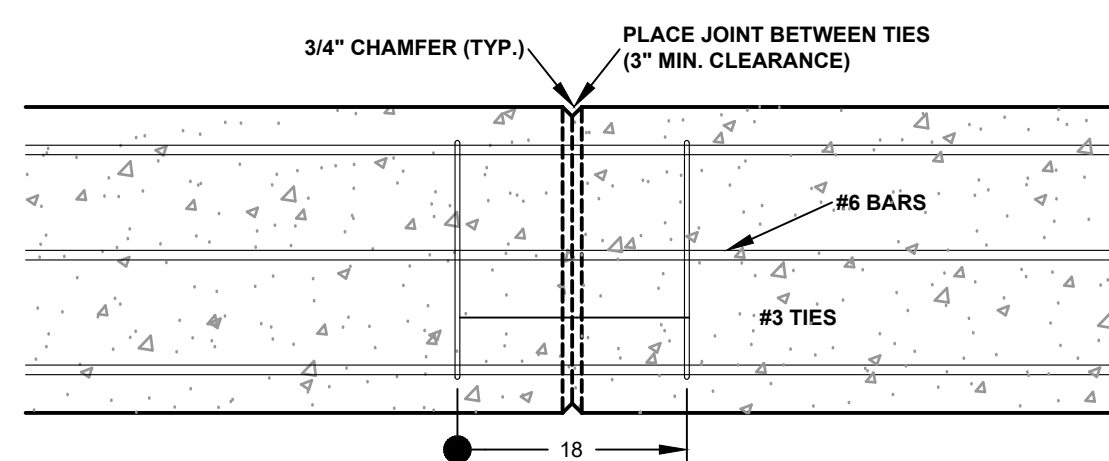
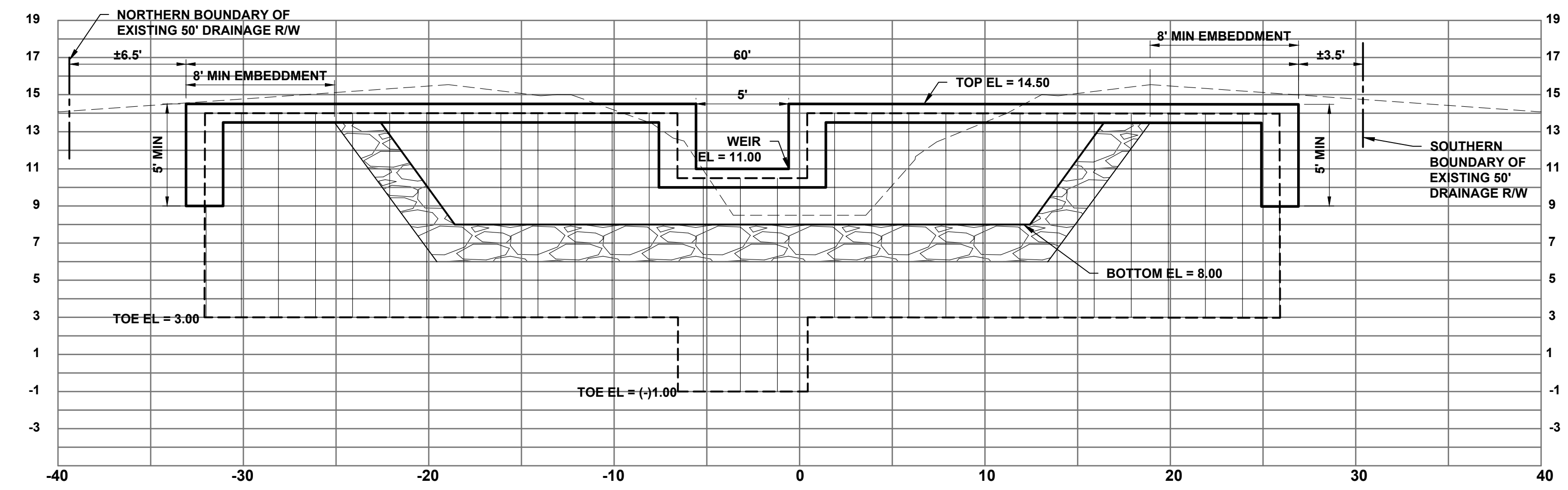
JOB No.: **1682.4**
SHEET
5 OF **9**

P:\16001\1682.4 - CPCL Sagamore Basin STA-DWG-2-SHEETS\1682.4-06-DETAILS 1.dwg, 8/19/2020 9:58:08 AM, AutoCAD PDF (General Documentation).pl

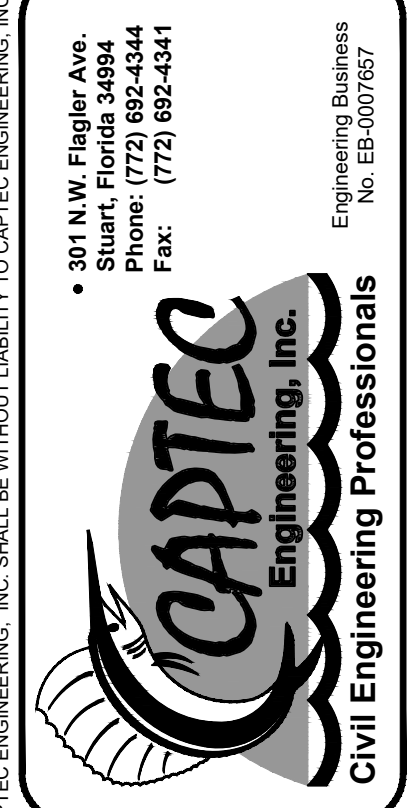
THIS DOCUMENT, TOGETHER WITH THE CONCEPTS AND DESIGNS PRESENTED HEREIN, IS AN INSTRUMENT OF SERVICE. IT IS INTENDED ONLY FOR THE SPECIFIC PURPOSE AND CLIENT FOR WHICH IT WAS PREPARED. REUSE OF AND IMPROPER RELIANCE ON THIS DOCUMENT WITHOUT WRITTEN AUTHORIZATION AND ADOPTION BY CAPEC ENGINEERING, INC. SHALL BE WITHOUT LIABILITY TO CAPEC ENGINEERING, INC.



PAVEMENT RESTORATION STANDARD DETAILS
NTS



- SOD**
- RELAY EXISTING SOD, PUT ALL SOD OVER REINFORCEMENT MAT. GARY JONES TO GET SPEC FROM CONTRACTOR.
 - PIN SOD.
- BALLAST ROCK**
- SAME SIZE AS EXISTING / 1 SIZE LARGER PREFERRED.
- EXISTING PLANTINGS**
- PLACE BALLAST ROCK AROUND EXISTING PLANTINGS.
- VMAX C350 TURF REINFORCEMENT MAT**
- ALLOWS FLORATAM SOD TO GROW THRU.
 - PIN FABRIC.



DATE:	8/19/20
DRAWN BY:	MWH
DESIGNED BY:	RRK
CHECKED BY:	JWC
PROJECT NO.:	1682.4
HORIZ. SCALE:	N/A
VERT. SCALE:	N/A
NO.	1
DATE	8/19/20
BY	JWC
BID SET	
REVISIONS	

SCALE	1
VERIFICATION	0
SOLID BAR IS EQUAL TO ONE INCH ON ORIGINAL DRAWING, ADJUST ALL SCALED ACCORDINGLY.	

CITY OF PORT ST. LUCIE	SAGAMORE BASIN
PORT ST. LUCIE, FLORIDA	DETAILS, CROSS - SECTION, & WEIR SECTION
STA-2 EAST	

JOSEPH W. CAPRA, P.E.
301 N.W. Flagler Ave.
Stuart, Florida 34994
P.E. No. 37638

Printed Date:
JOB No.: 1682.4
SHEET 6 OF 9

THIS DOCUMENT, TOGETHER WITH THE CONCEPTS AND DESIGNS PRESENTED HEREIN, IS AN INSTRUMENT OF SERVICE, IS INTENDED ONLY FOR THE SPECIFIC PURPOSE AND CLIENT FOR WHICH IT WAS PREPARED. REUSE OF AND IMPROPER RELIANCE ON THIS DOCUMENT WITHOUT WRITTEN AUTHORIZATION AND ADOPTION BY CAPTEC ENGINEERING, INC. SHALL BE WITHOUT LIABILITY TO CAPTEC ENGINEERING, INC.

CPSL Sagamore Basin Stormwater Treatment Area 2 - East

City of Port St. Lucie, FL

Bid Form - 8/19/20

This item includes all equipment, materials, labor, supervision, and all other work necessary for the pipe replacements and resurfacing for CPSL Sagamore Basin Project located in Port St. Lucie, FL 34987. The STA construction and pipe replacement work shall include but is not limited to grading, installation of drainage structures and pipes, excavation and embankment. All work for CPSL Sagamore Basin Project as depicted on the Construction Drawings; Sheets I-9. This item shall include general conditions, bonds, indemnification, mobilization, demobilization, dewatering, coatings, connections, restoration, testing, record drawings, owner training, and all other necessary items to provide a complete and fully functioning system.

No.	FDOT Pay Item	Item Description	Unit	Quantity	Unit Cost	Item Cost
GENERAL ITEMS						
1	999-1	Mobilization (Video)	LS	1		\$ -
2	999-2	Dewatering	LS	1		\$ -
3	999-3	Erosion Control	LS	1		\$ -
4	104 11	Turbidity Barrier	LF	80		\$ -
5	104-13-1	Staked Silt Fence, Type III	LF	3,187		\$ -
6	104-15	Stabilized Construction Entrance/Sweeping/15" HDPE	LS	1		\$ -
7	199-1	Survey Staking & As-Builts	LS	1		\$ -
8	999-4	Restore Residential Fencing / Landscaping	LS	1		\$ -
9	110-1-1	Clearing & Grubbing / Demolition / Plug Pipes	AC	5.09		\$ -
SUBTOTAL			---	---	---	\$ -
DRAINAGE						
10	120-1	Regular Excavation (10% Contingency)	CY	56,100		\$ -
11	120-6	Embankment (Swale Regrading - Use Onsite Material)	CY	60		\$ -
12	455-33-3	Sheet Pile Weir	SF	660		\$ -
13	400-2-2	Concrete Cap (Class I)	CY	15		\$ -
14	530-3-3	Riprap, Bank and Shore	TN	277		\$ -
15	425-1-572	DT Bot Type G Inlet < 10' (Steel Grate - Galv)	EA	2		\$ -
16	430-75-18	Pipe Culvert 18" HDPE	LF	229		\$ -
17	999-5	Concrete Jacket	EA	4		\$ -
18	999-6	Concrete Pad (4" Thick)	SY	18		\$ -
19	430-75-230	Pipe Culvert, 29" x 45" ERCP	LF	461		\$ -
20	430-982-38	Mitered End Section, 18" Round	EA	5		\$ -
21	999-7	Concrete Endwall	LS	2		\$ -
22	999-8	Utility Adjustment	ALLOW	2		\$ -
SUBTOTAL			---	---	---	\$ -
ROADWAY						
23	999-9	Open / Cut Restore Asphalt	SY	46		\$ -
24	327-70-1	Mill and Overlay Asphalt	SY	183		\$ -
25	999-10	Street Signage and Pavement Markings	LS	1		\$ -
26	999-10	ADA Mats	SF	40		\$ -
27	522-1	Concrete Sidewalk, 4" Thick	SY	1,709		\$ -
SUBTOTAL			---	---	---	\$ -
PLANTING & GRASSING						
28	570-1-2A	Performance Turf (Bahia Sod - Includes Pinning)	SY	16,000		\$ -
SUBTOTAL			---	---	---	\$ -

TOTAL	\$ -
--------------	-------------

NOTES:

430 - PIPES: THE COST OF PIPE WILL INCLUDE REMOVAL/DISPOSAL/GROUT OF EXIST. PIPE & REPLACEMENT OF PIPE/BACKFILL/MATERIAL/OVERLAY/ETC. PRICE TO INCLUDE REMOVE/REINSTALL FENCES TO BUILD LINES.

425 - INLETS: THE COST OF INLET WILL INCLUDE WEEP HOLE/SUMPS AND REMOVAL/DISPOSAL OF EXISTING INLET AND REPLACEMENT INLETS/MANHOLES/ETC.

999-3 - EROSION CONTROL: LUMP SUM TO INCLUDE PERMITTING/MONITORING/INLET PROTECTION. THE LENGTH OF SILT FENCE AND TURBIDITY BARRIER TO BE SEPARATE.

UTILITY STATUS REPORT

CPSL - Sagamore STA

CAPTEC Project #1682.4

Sunshine One Call Design Ticket #338706493

SUBMITTED TO: <small>(Utility Company or Govt. Agency, Contact Person & Address)</small>	DATE SUBMITTED:	RESPONSE DATE /RESPONDENT'S NAME	ITEMS SUBMITTED/ COMMENTS
FLORIDA POWER & LIGHT Armlight Marjan armlight.marjan@fpl.com	12/4/17 email	Follow-up / no response	site plan / location map
AT&T Mark Gutierrez mark.gutierrez@att.com	12/4/17 email	Follow-up / no response	site plan / location map
COMCAST Anthony Springsteel anthony_springsteel@cable.comcast.com	12/4/17 email	Rcvd markups 12/8 (Rick Johnson)	site plan / location map
FLORIDA CITY GAS Ron Muller rmuller@aglresources.com	12/4/17 email	No conflicts 12/4	site plan / location map
CITY OF PORT ST. LUCIE TRAFFIC Paul Johnson pjohnson@cityofpsl.com	12/4/17 email	No conflicts 12/8	site plan / location map
CITY OF PORT ST. LUCIE UTILITIES Colleen Jacobsen cjacobsen@cityofpsl.com	12/4/17 email	Rcvd markups 12/11	site plan / location map

P:\1600\1682.4 - CPSL Sagamore Basin STA\utl\locates\Utility Status Report.doc

NOTES:

THE FOLLOWING UTILITY COORDINATION EFFORTS HAVE BEEN COMPLETED FOR THIS PROJECT. BEFORE BEGINNING CONSTRUCTION, CONTRACTOR TO CONTACT EACH UTILITY AND CONFIRM "NO CONFLICTS" WITH THE PROPOSED WORK.



**CITY OF PORT ST. LUCIE
SAGAMORE BASIN
PORT ST. LUCIE, FL
QUANTITIES
STA-2 EAST**

JOSEPH W. CAPRA, P.E.
301 N.W. Flagler Ave.
Stuart, Florida 34994
P.E. No. 37638

Printed Date: _____
JOB No.: **1682.4**
SHEET
7 OF **9**

DATE: 8/19/2020
DRAWN BY: MMH
DESIGNED BY: RRK
CHECKED BY: JWC
PROJECT NO.: 1682.4
HORIZ. SCALE: 1"=100'
VERT. SCALE: 1"=10'
1682.4-06-QUANTITIES

NO.	DATE	BY	REVISED	REVISIONS
1	8/19/20	JWC		

SCALE VERIFICATION
1
0
SOLID BAR IS EQUAL TO ONE INCH ON ORIGINAL DRAWING. ALL DIMENSIONS ACCORDINGLY



THIS DOCUMENT, TOGETHER WITH THE CONCEPTS AND DESIGNS PRESENTED HEREIN, IS AN INSTRUMENT OF SERVICE. IT IS INTENDED ONLY FOR THE SPECIFIC PURPOSE AND CLIENT FOR WHICH IT WAS PREPARED. REUSE OF AND IMPROPER RELIANCE ON THIS DOCUMENT WITHOUT WRITTEN AUTHORIZATION AND ADOPTION BY CAPTEC ENGINEERING, INC. SHALL BE WITHOUT LIABILITY TO CAPTEC ENGINEERING, INC.

