

CODE COMPLIANCE DATA:

1. PROJECT SCOPE: THE WORK CONSISTS OF A PROVIDING A NEW DOOR TO CONNECT TWO UNITS IN A SHOPPING CENTER . BOTH UNITS USED AS A CHILDREN'S DAY CARE CENTER
2. APPLICABLE CODES:
- FLORIDA BUILDING CODE- BUILDING 2023 (FBC -B)8TH EDITION
FLORIDA BUILDING CODE- ACCESSIBILITY (FBC -A)2023 8TH EDITION
FLORIDA BUILDING CODE- ENERGY CONSERVATION (FBC-E) 2023 8TH EDITION
FLORIDA BUILDING CODE- MECHANICAL (FBC-M) 2023 8TH EDITION
FLORIDA BUILDING CODE- PLUMBING (FBC -P)2023 8TH EDITION
FLORIDA FIRE PROTECTION CODE 2023 8TH EDITION INCORPORATING NFPA1 & 101 2021 EDITION
NATIONAL ELECTRIC CODE (NEC)2020 EDITION

3. DESIGN PARAMETERS FOR WIND LOAD COMPLIANCE:
- BUILDING CATEGORY: II
CODE REFERENCE: FBC-B, CHAP 6 ASCE-7 22
BUILDING DESIGN: ENCLOSED

4. OCCUPANCY CLASSIFICATION:
- EDUCATIONAL
- B- (FBC-B 305.2: FFPC 6.1.11
NFPA101 17.1.1
BUILDING SPRINKLERED

5. CONSTRUCTION CLASSIFICATION:
- TYPE II -B - (FBC -B TABLE 506.2-51, 602.2)
(ASSUMED)

6. HEIGHT & AREA:
- EDUCATIONAL (E)(ALLOWABLE):
- EDUCATIONAL (DESIGN):
7. OCCUPANT LOAD:
- EDUCATIONAL(LOAD FACTOR):
- EDUCATIONAL (DESIGN):

75' FT HEIGHT, 3 STORIES, 58,000 S.F.
(FBC TABLE 504.3, 504.4, 506.2 -51)

38'-0" FT HEIGHT, 1 STORIES, 5520 S.F GROSS (BOTH UNITS COMBINED)
5131 S.F NET -EXCLUDES WALLS, & HALLS (BOTH UNITS COMBINED)

20 NET PER CLASSROM FBC-B TABLE 1004.1.2
35 NET NFPA 101 TABLE 7.3.1.2

CLASSROOM 1 - 498 S.F
CLASSROOM 2 - 706 S.F
CLASSROOM 3 - 826 S.F
CLASSROOM 4 - 791 S.F
CLASSROOM 5 - 757 S.F
TOTAL - 3578 S.F.
FBC 3578/20 NET = 178 PERSONS
NFPA 3578/35 NET = 102 PERSONS

8. DAY CARE >12 CLIENTS - REQ'D OCCUPANCY SEPARATION W/ BUSINESS:

DAY CARE OCCUPANCY NFPA 101: 6.1.4)
1 HOUR MINIMUM NFPA 101: TABLE 6.1.14.4.1(b)
BUILDING SPRINKLERED

9. DOOR SIZE:

32" MIN. FBC -B 1010.1.1 NFPA 101 7.2.1.2.3.2

10. TRAVEL DISTANCE:
- EDUCATIONAL
DAY CARE

250' W/ SPRINKLERS (FBC-B 1017.2 NFPA 101 TABLE 42.2.6.)
100' W/ SPRINKLERS (NFPA 17.2.5.2.1)

11. MINIMUM NUMBER OF EXITS
- EDUCATIONAL
- DAY CARE

OCCUPANT LOAD 102 < 500 - (2) EXITS REQUIRED
PER FBC TABLE 1006.3.2
(2) EXITS REQUIRED (NFPA 7.4.1)

12. PLUMBING FIXTURE REQUIREMENTS:
- EDUCATIONAL OCCUPANCY:

SEPARATE FACILITIES REQUIRED (FBC-P TABLE 403.1)
WOMEN'S ROOM -OCCUPANT LOAD 102/2 = 51
- 2 WATER CLOSETS REQUIRED (1 PER 50)
- 2 LAVATORIES REQUIRED (1 PER 50)

MEN'S ROOM - OCCUPANT LOAD 102/2 =51
- 2 WATER CLOSETS REQUIRED (1 PER 50)
- 2 LAVATORIES REQUIRED (1 PER 50)

SERVICE SINK:

EDUCATIONAL : - REQUIRED
(1) SERVICE SINK PROVIDED

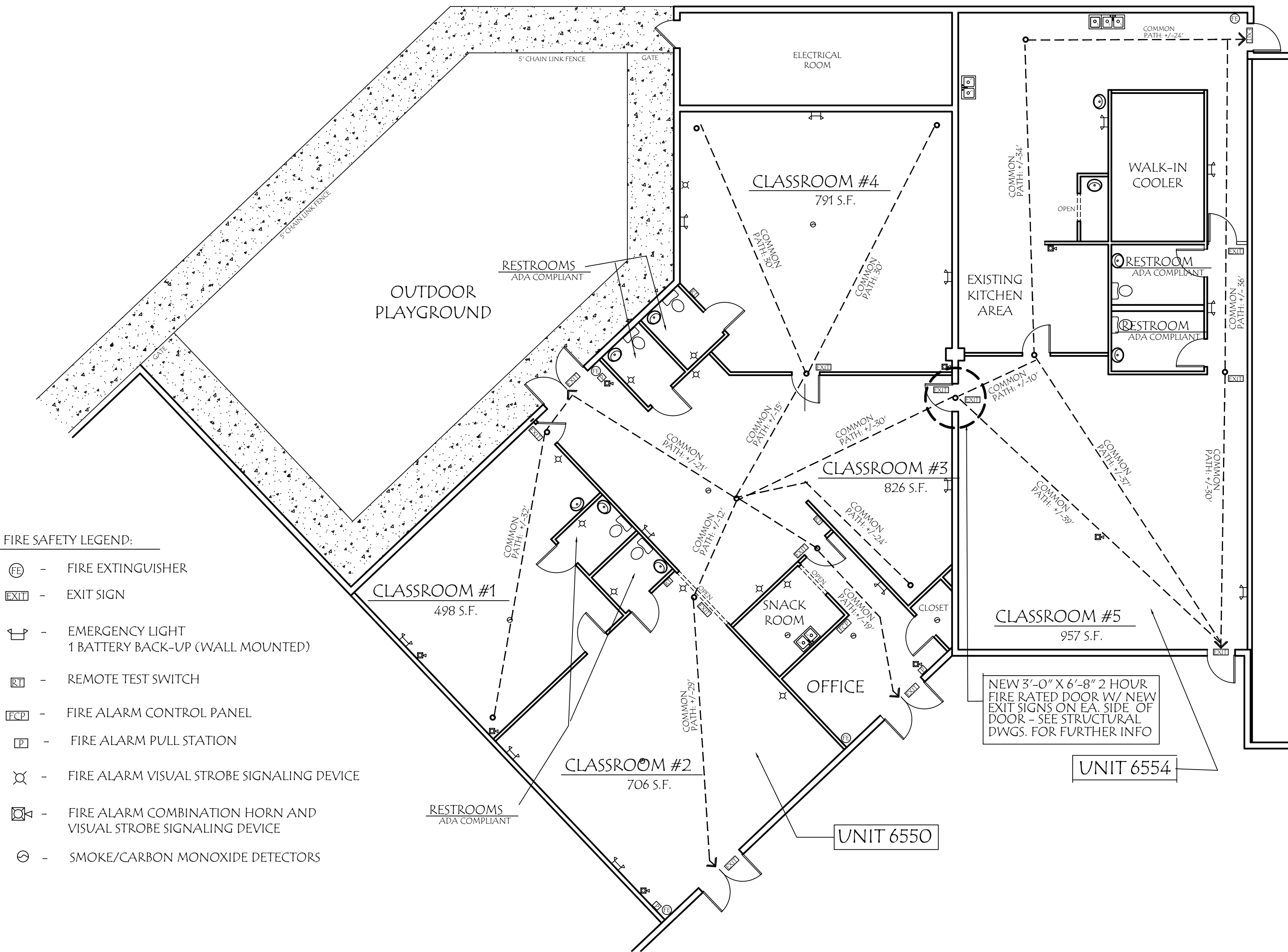
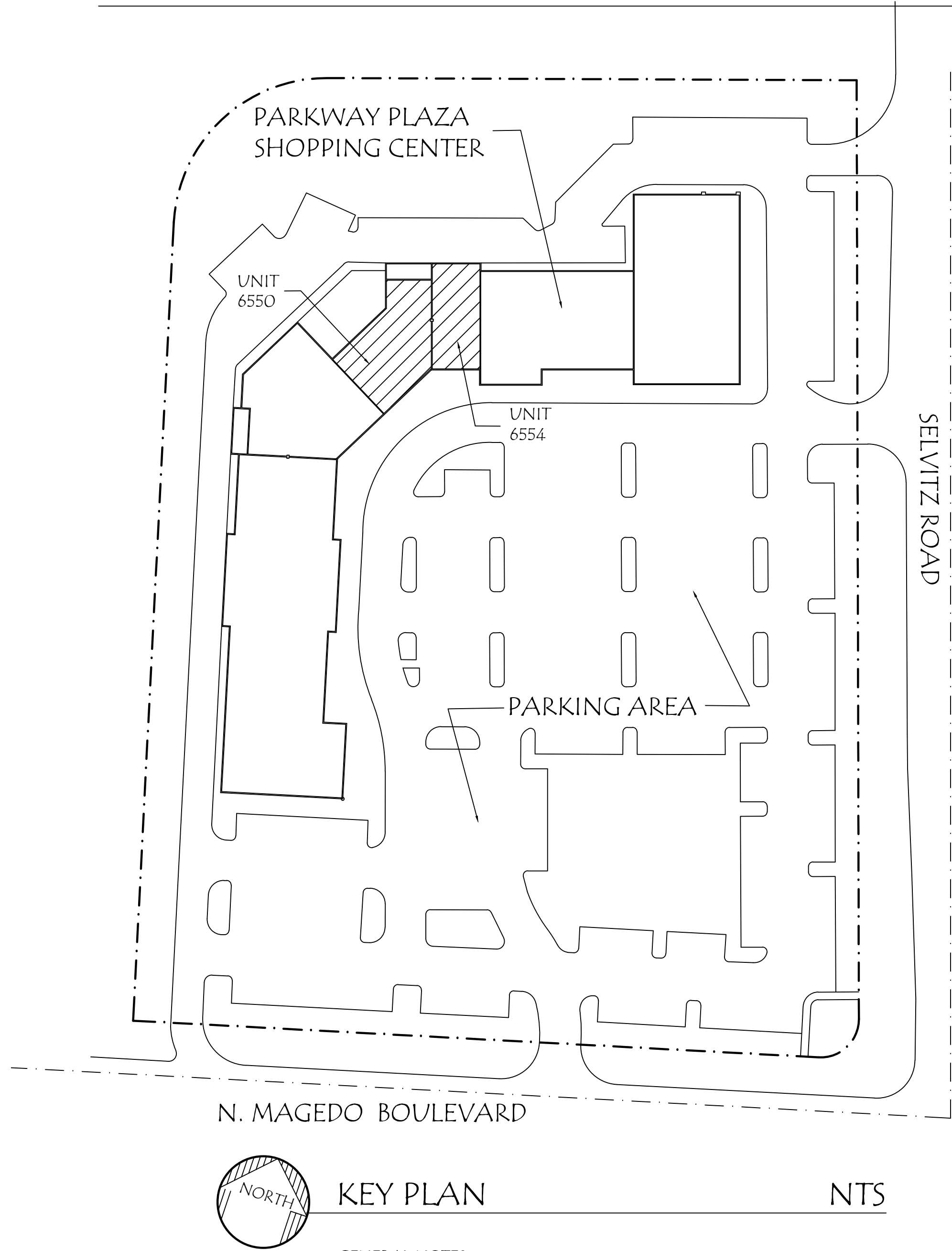
WATER FOUNTAIN:

EDUCATIONAL : 1 PER 100 - REQUIRED
(1) WATER FOUNTAIN PROVIDED

13. FLOOR AREAS:

EXISTING:
UNIT 6550 - 3427 S.F.
UNIT 6554 - 2217 S.F.

PROPOSED W/ NEW DOOR:
UNIT 6550 - 3427 S.F. + UNIT 6554 - 2217 S.F. = 5614 S.F. TOTAL



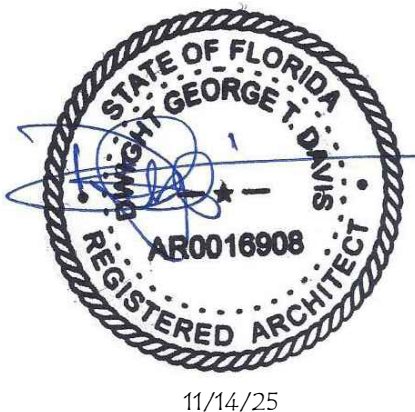
- FIRE SAFETY LEGEND:
- FE - FIRE EXTINGUISHER
 - EXIT - EXIT SIGN
 - EL - EMERGENCY LIGHT
1 BATTERY BACK-UP (WALL MOUNTED)
 - RTS - REMOTE TEST SWITCH
 - FACP - FIRE ALARM CONTROL PANEL
 - PS - FIRE ALARM PULL STATION
 - VSD - FIRE ALARM VISUAL STROBE SIGNALING DEVICE
 - CHS - FIRE ALARM COMBINATION HORN AND VISUAL STROBE SIGNALING DEVICE
 - SCMD - SMOKE/CARRON MONOXIDE DETECTORS



FLOOR PLAN W/ FIRE SAFETY COMPONENTS & COMMON PATH ANALYSIS

1/8" = 1'-0"

PERMIT



DATE
9/22/25
9/23/25
10/24/25
REVISION
11/14/25

Nana's House Academy- New Door
Nana's House Academy LLC
Parkway Plaza Shopping Center
6559 NW Selvitz Rd. - Units 6550 & 6554
Port st. Lucie, Florida

Dwight Davis Architect, P.A.
1045 SE Riverside Drive Stuart, Florida 34996
(772) 781-6695
Florida License Number AR0016908

A-1
SITE PLAN, NOTES
PLAN
JOB NUMBER 2517