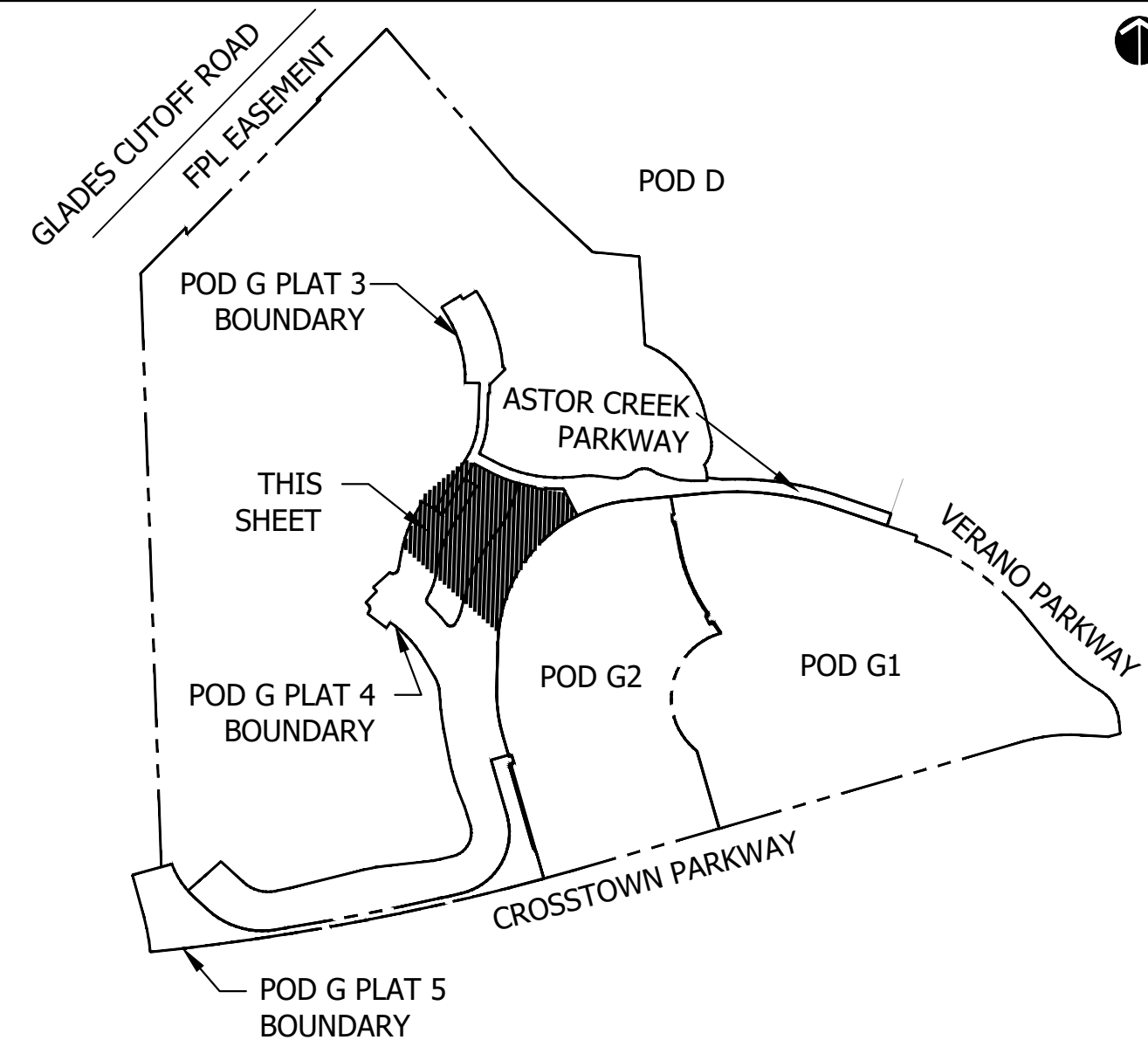
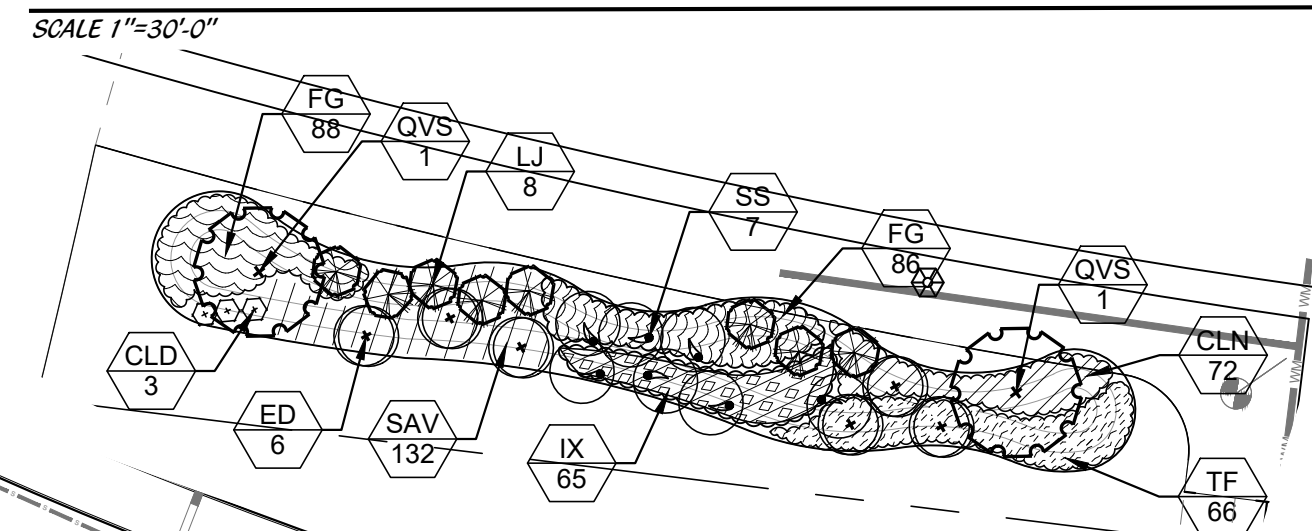


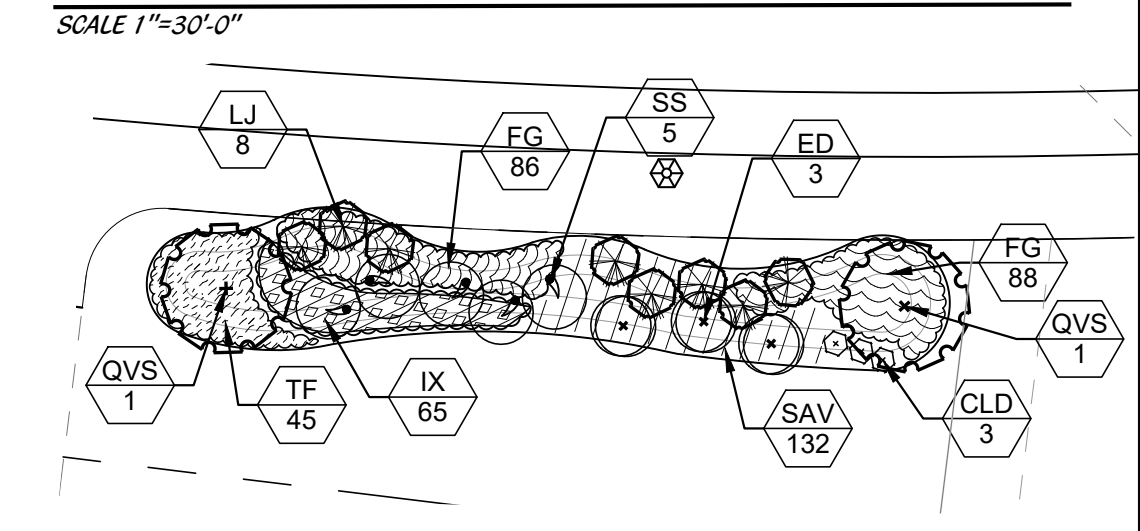
KEY MAP



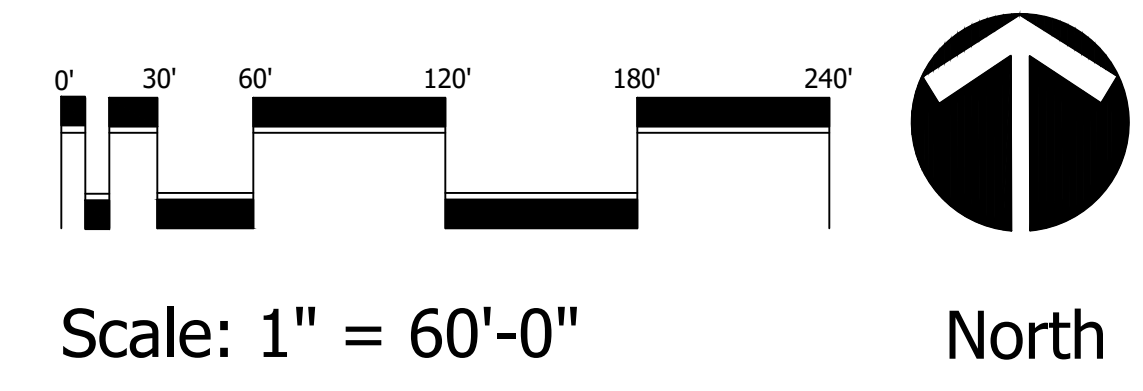
COMMON AREA 3



COMMON AREA 4



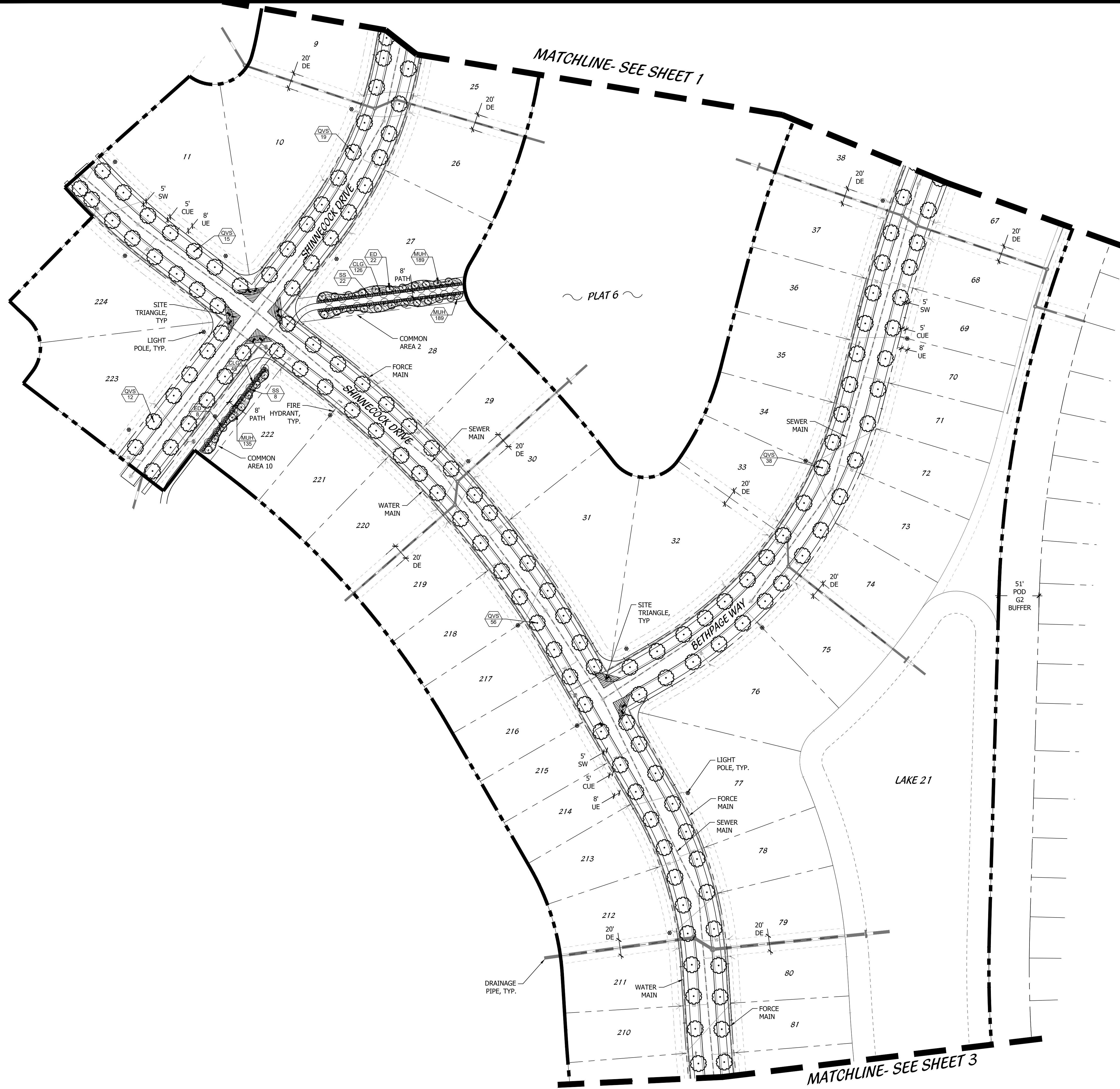
PSLUD # 11-652-36F
 PSL PROJ# 21-207
POD G PLAT 4
LANDSCAPE PLANS



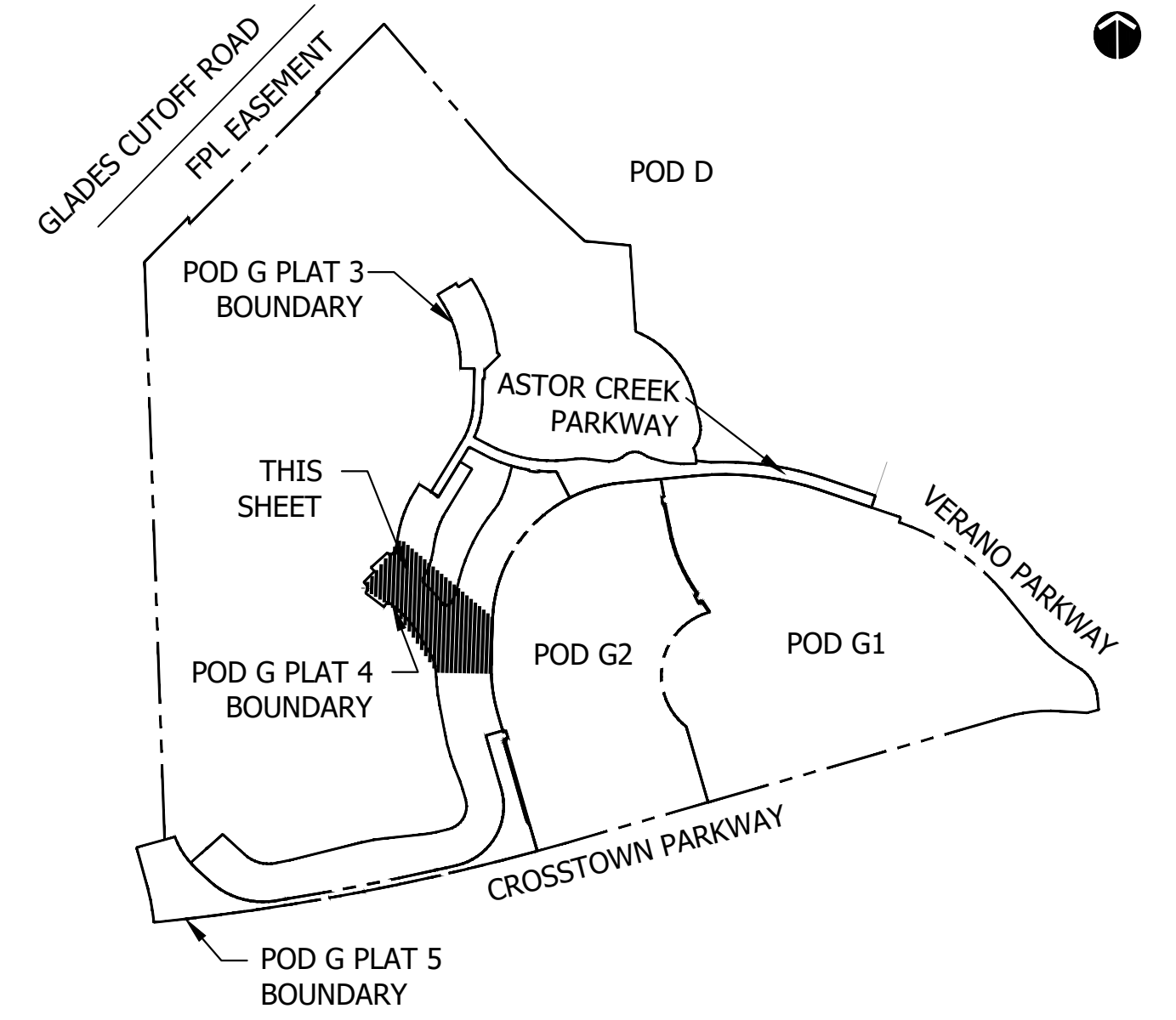
Cotleur & Hearing
 Landscape Architects
 Land Planners
 Environmental Consultants
 1934 Commerce Lane
 Suite 1
 Jupiter, Florida 33458
 561.747.6336 · Fax 747.1377
 www.cotleurhearing.com
 Lic# LC-C000239

VERANO SOUTH
 Kolter Homes
 Port St. Lucie, Florida

DESIGNED	LAH
DRAWN	LAH
DATE	09-01-21
REVISIONS	10-01-21
	11-17-21
	12-28-21



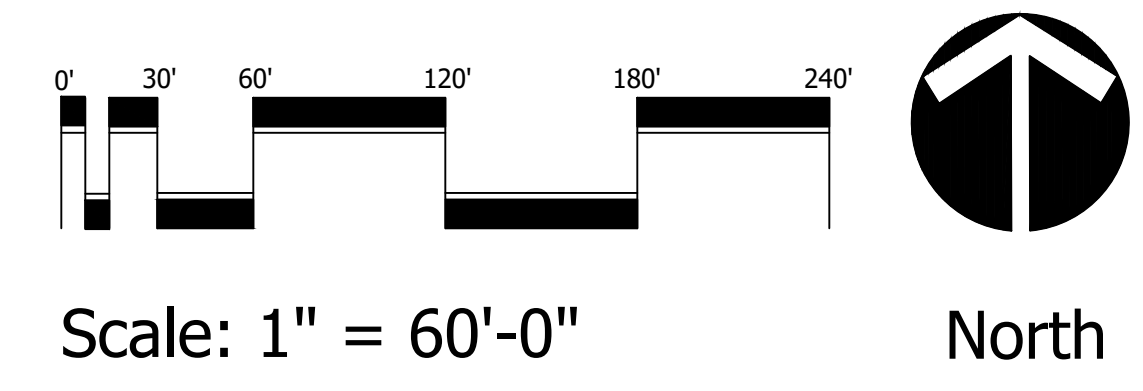
KEY MAP



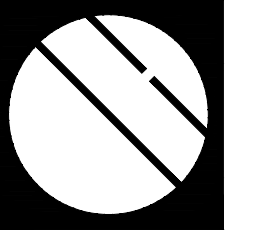
Cotleur & Hearing
 Landscape Architects
 Land Planners
 Environmental Consultants
 1934 Commerce Lane
 Suite 1
 Jupiter, Florida 33458
 561.747.6336 · Fax 747.1377
 www.cotleurhearing.com
 Lic# LC-C000239

VERANO SOUTH
 Kolter Homes
 Port St. Lucie, Florida

PSLUD # 11-652-36F
 PSL PROJ# 21-207
POD G PLAT 4
LANDSCAPE PLANS



DESIGNED	LAH
DRAWN	LAH
DATE	09-01-21
REVISIONS	10-01-21
	11-17-21
	12-28-21



Cotleur & Hearing

Landscape Architects
Land Planners
Environmental Consultants

1934 Commerce Lane
Suite 1
Jupiter, Florida 33458
561.747.6336 · Fax 747.1377
www.cotleurhearing.com
Lic# LC-C000239

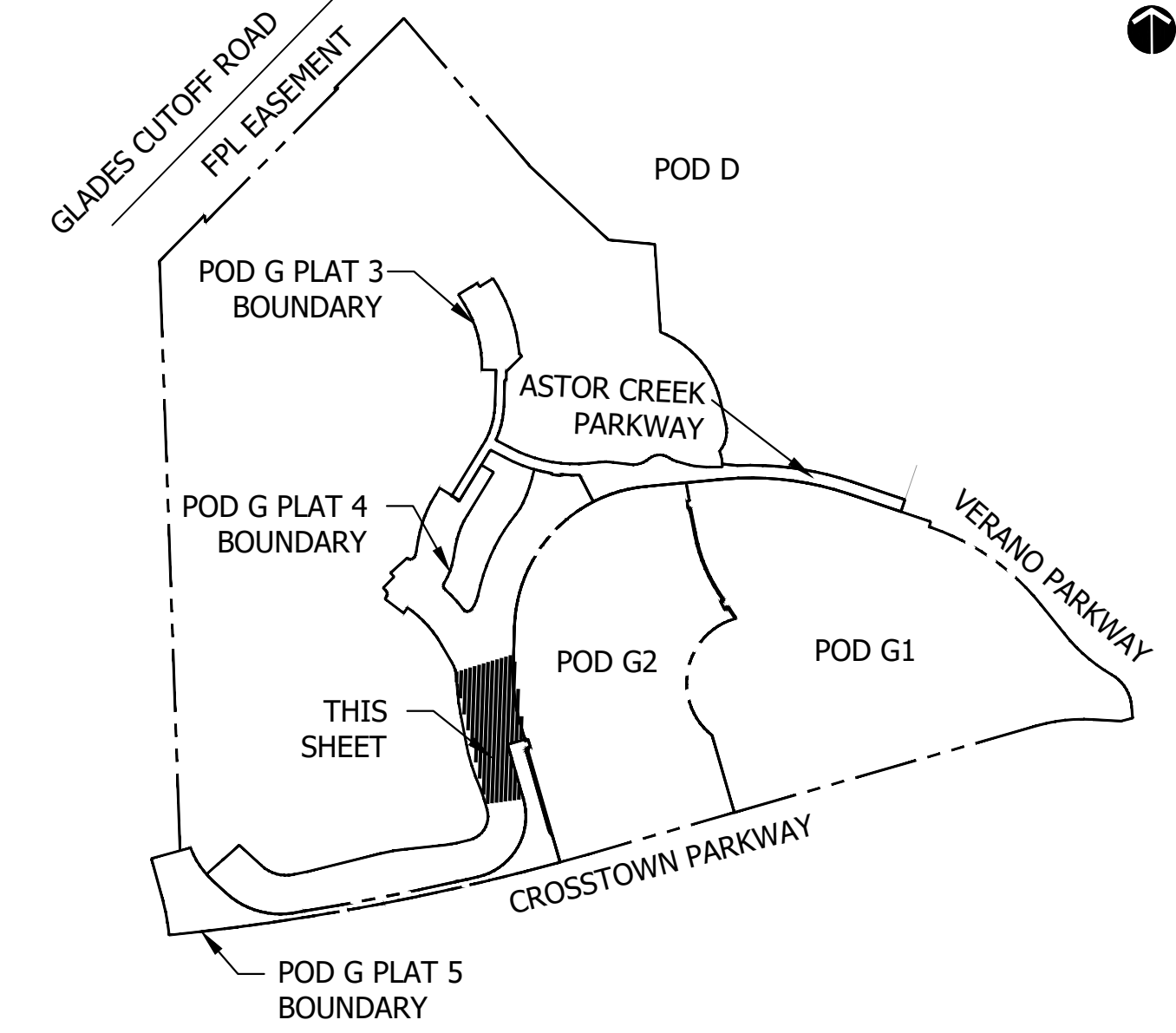
VERANO SOUTH
Kolter Homes
Port St. Lucie, Florida

DESIGNED	LAH
DRAWN	LAH
DATE	09-01-21
REVISIONS	10-01-21
	11-17-21
	12-28-21

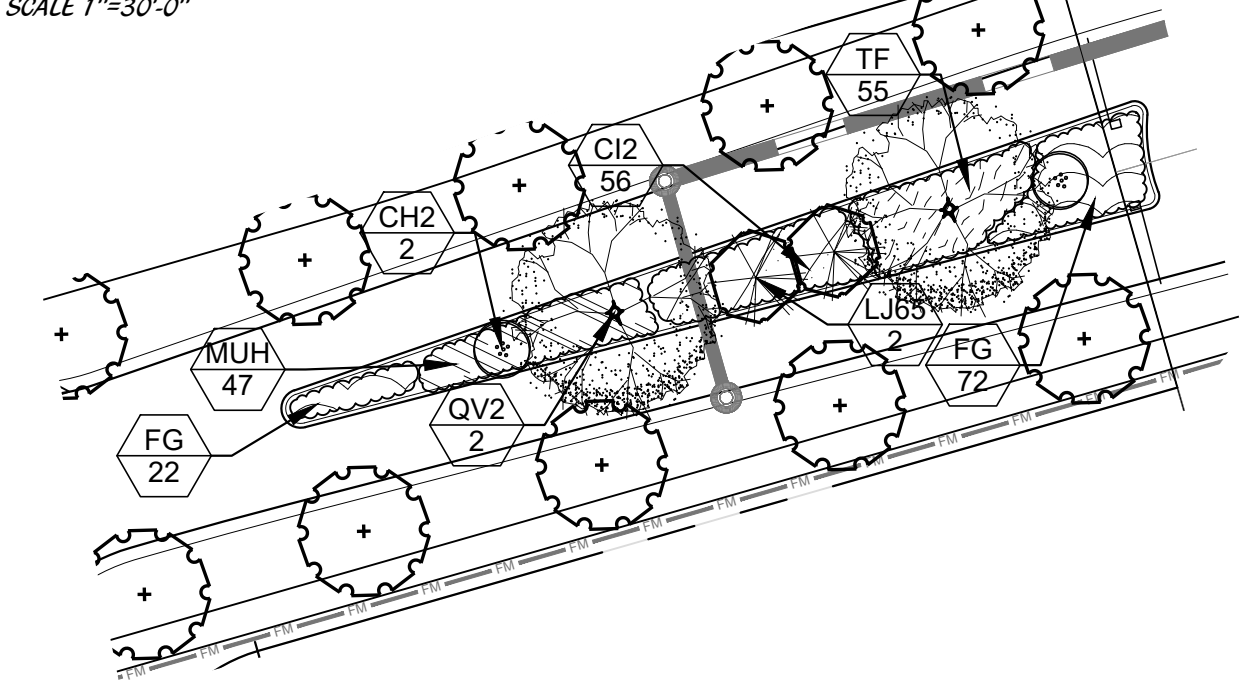
SHEET 3 OF 5

© COTLEUR & HEARING, INC.
These drawings are the property of the architect and are not to be used for alterations or on other projects except by agreement in writing with the architect. Immediately report any discrepancies to the architect.

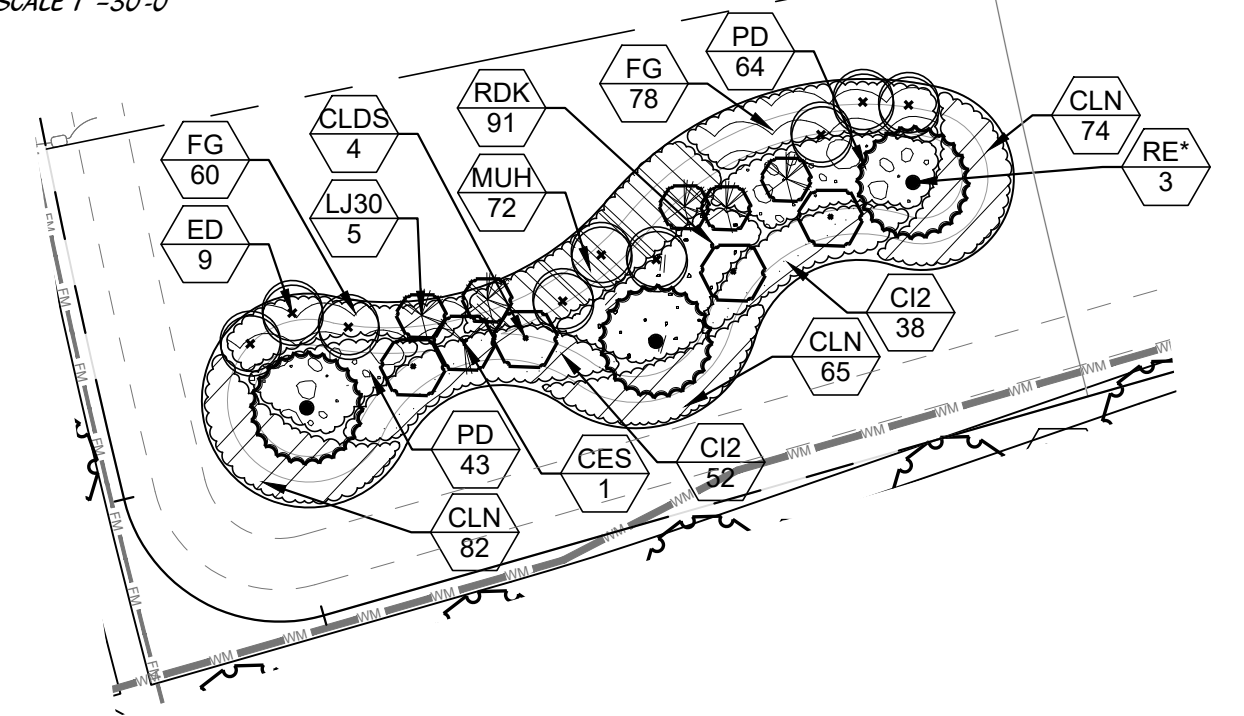
KEY MAP



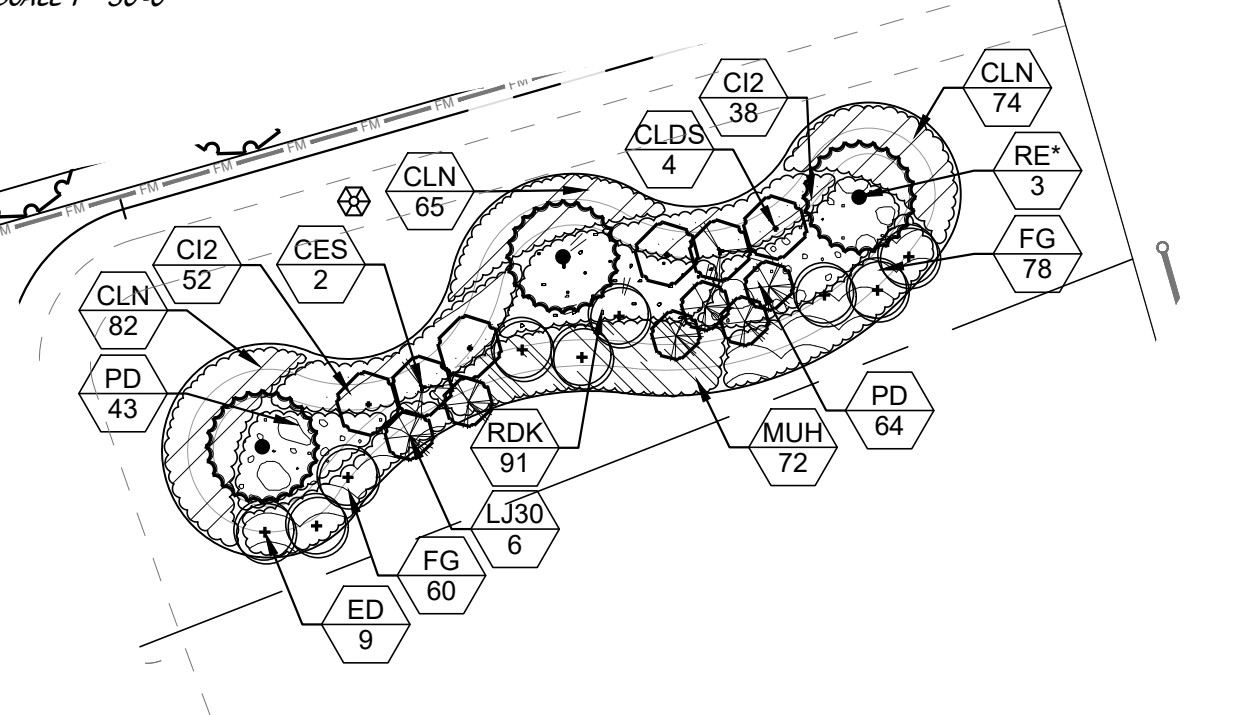
MEDIAN 1
SCALE 1"=30'-0"



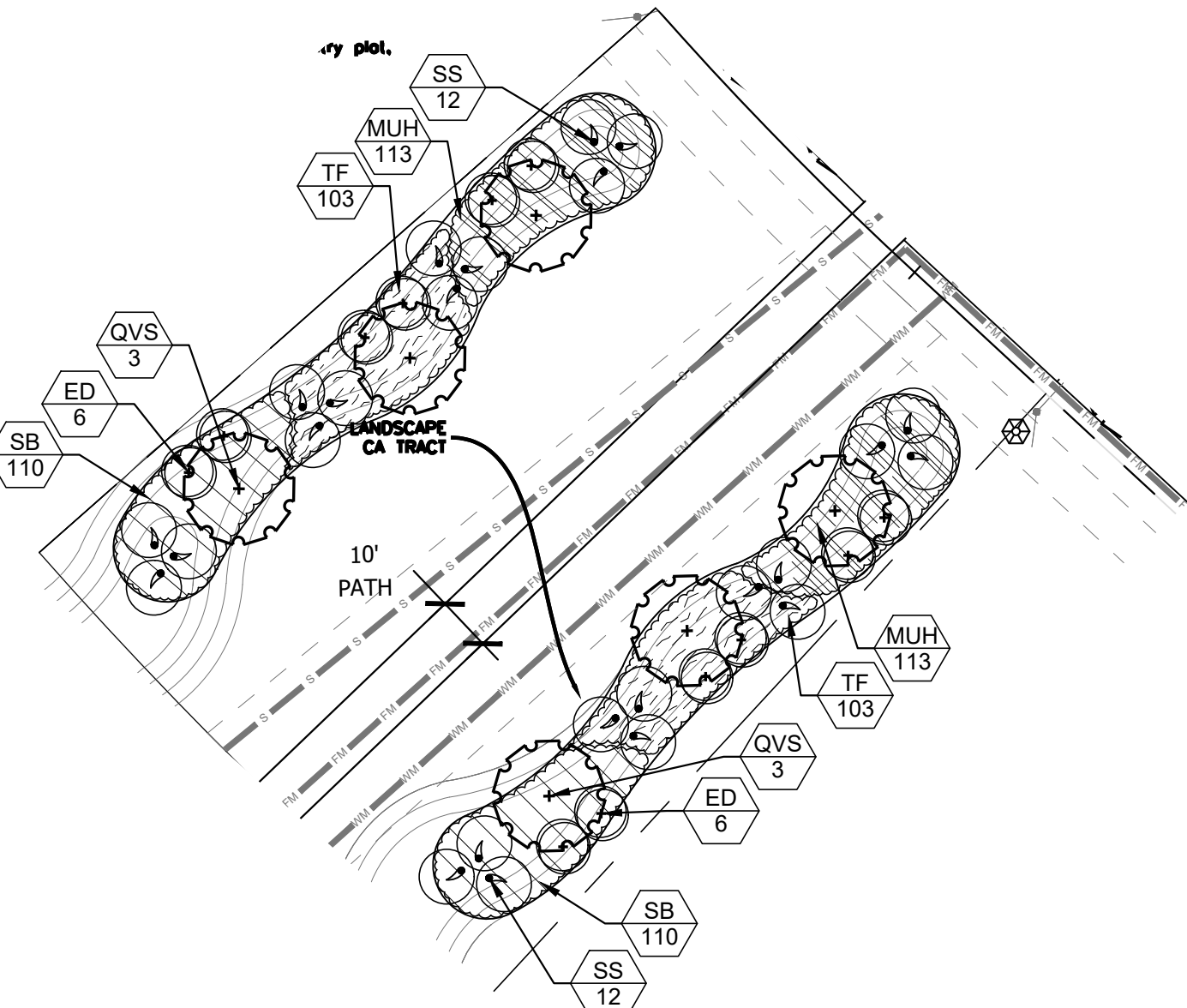
COMMON AREA 5
SCALE 1"=30'-0"



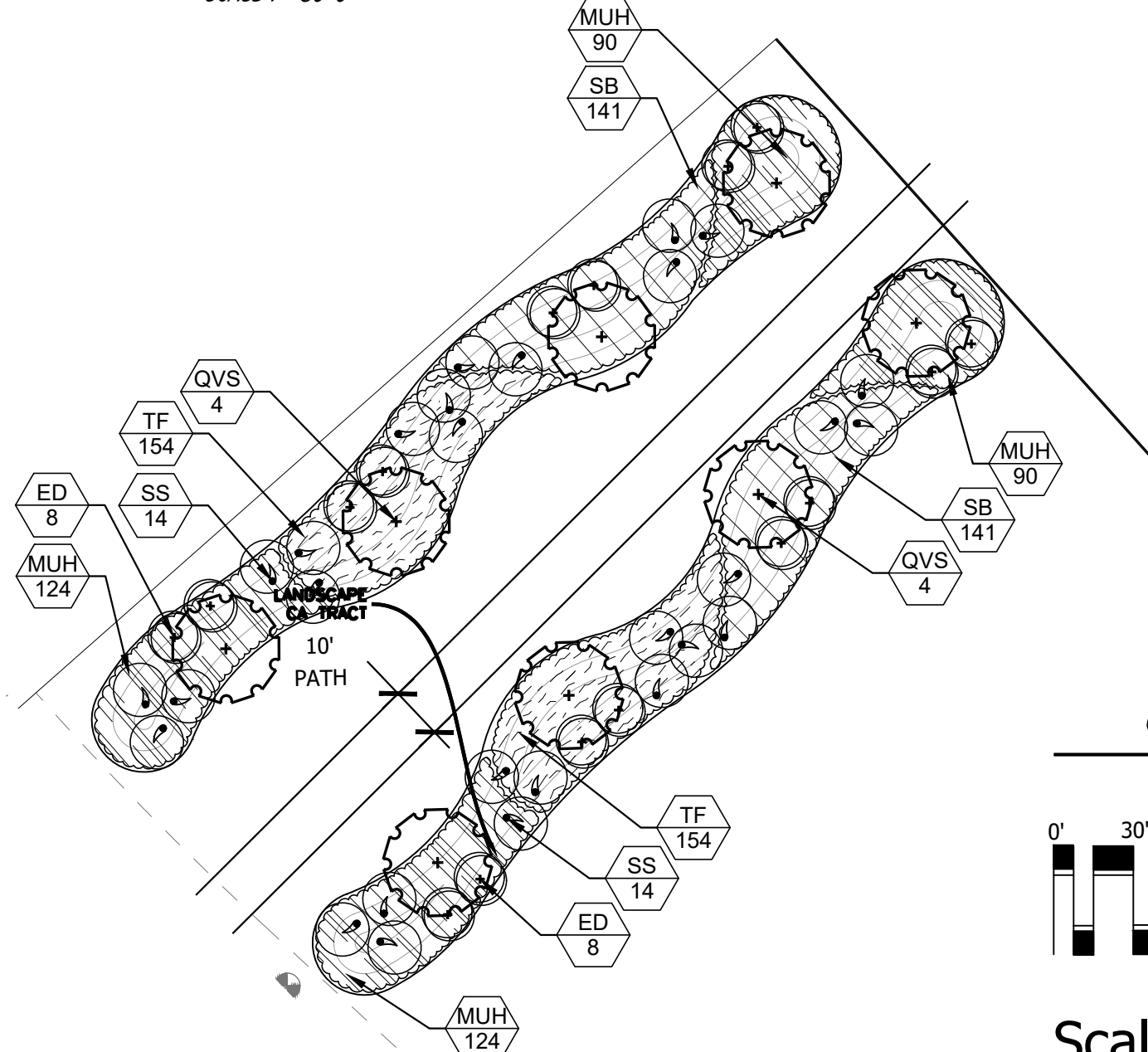
COMMON AREA 7
SCALE 1"=30'-0"



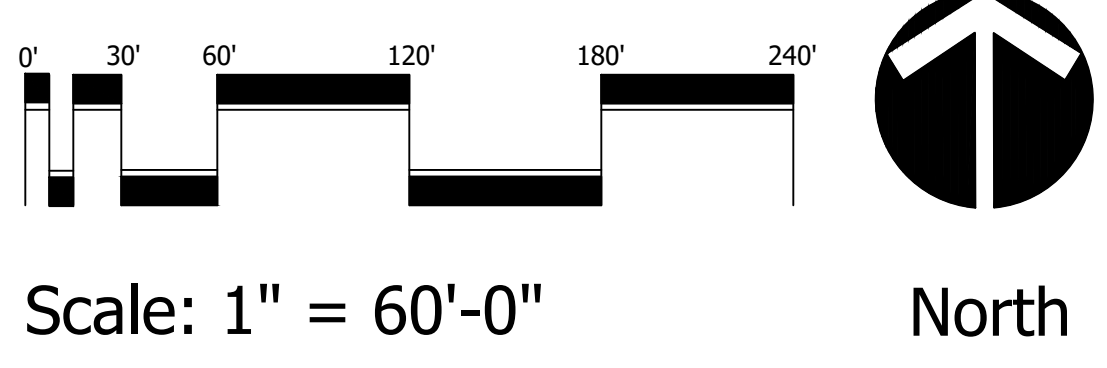
COMMON AREAS 8
SCALE 1"=30'-0"

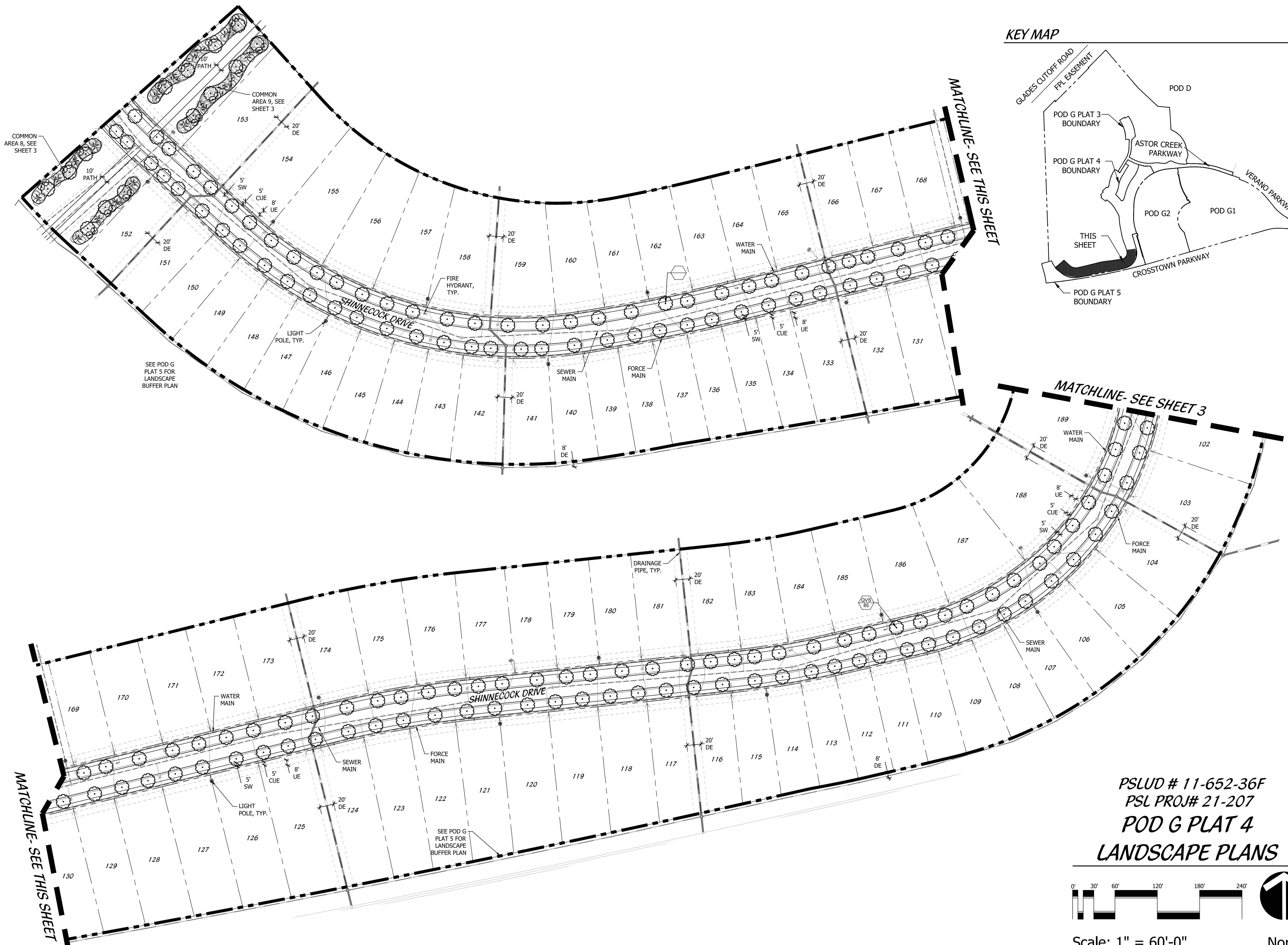


COMMON AREAS 9
SCALE 1"=30'-0"

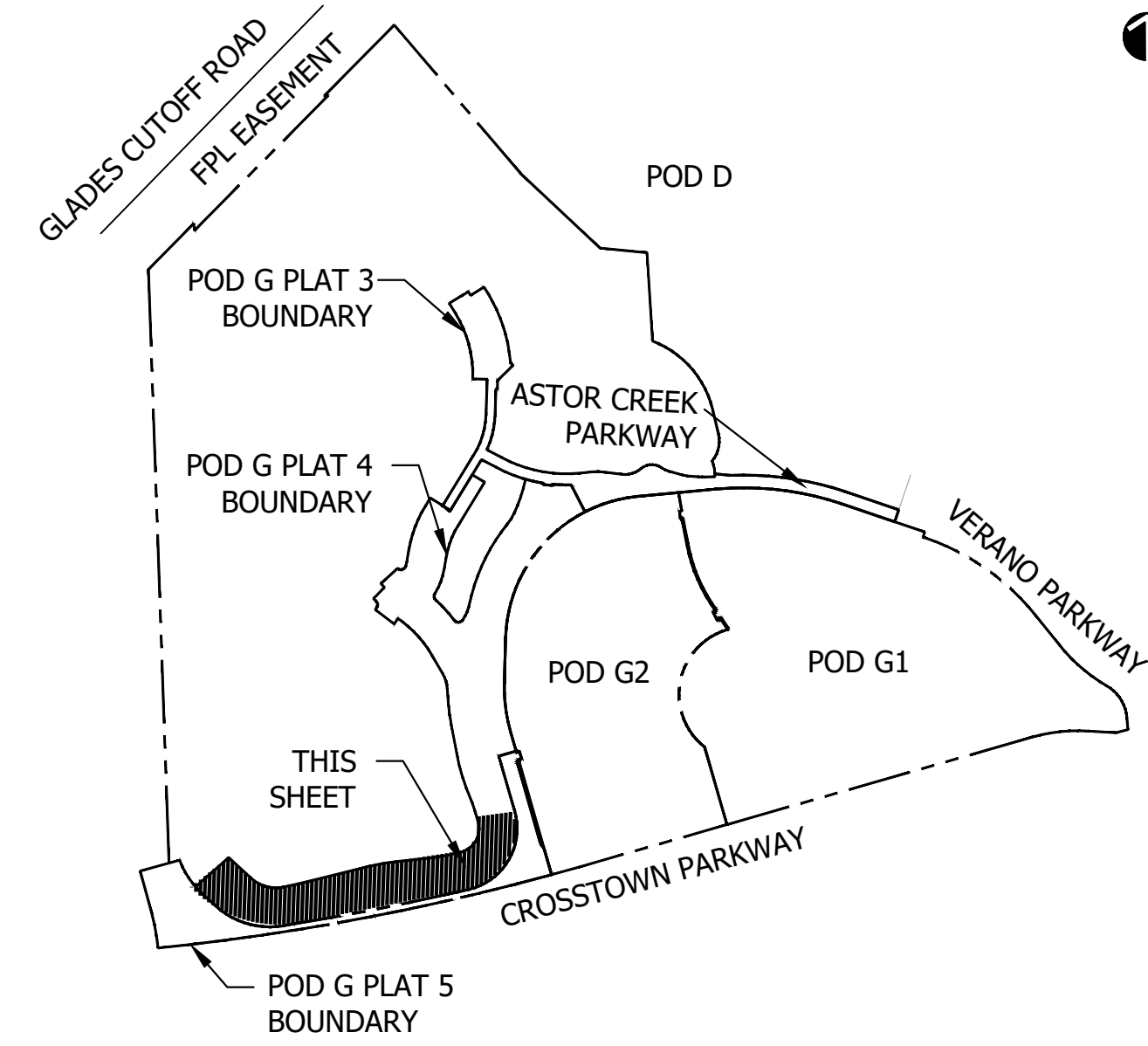


PSLUD # 11-652-36F
PSL PROJ# 21-207
POD G PLAT 4
LANDSCAPE PLANS

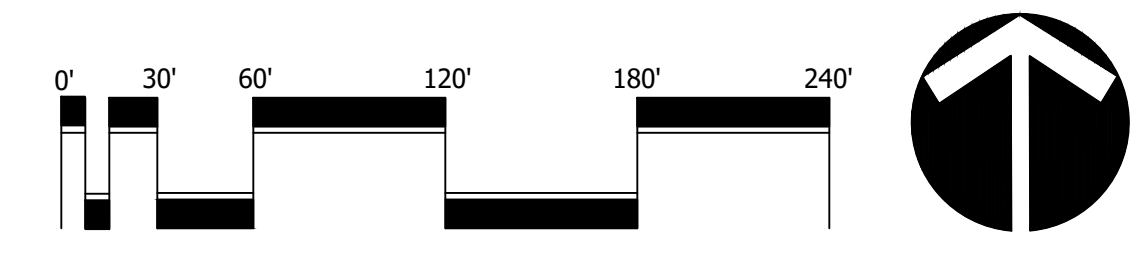




KEY MAP



PSLUD # 11-652-36F
 PSL PROJ# 21-207
POD G PLAT 4
LANDSCAPE PLANS



Scale: 1" = 60'-0"

North

Cotleur & Hearing
 Landscape Architects
 Land Planners
 Environmental Consultants
 1934 Commerce Lane
 Suite 1
 Jupiter, Florida 33458
 561.747.6336 · Fax 747.1377
 www.cotleurhearing.com
 Lic# LC-C000239

VERANO SOUTH
 Kolter Homes
 Port St. Lucie, Florida

DESIGNED	LAH
DRAWN	LAH
DATE	09-01-21
REVISIONS	10-01-21
	11-17-21
	12-28-21

LANDSCAPE SPECIFICATIONS

1. GENERAL LANDSCAPE REQUIREMENTS

LANDSCAPE CONTRACT WORK INCLUDES, BUT IS NOT LIMITED TO, SOIL PREPARATION, FINE OR FINISH GRADING, FURNISHING AND INSTALLING PLANT MATERIAL, WATERING, STAKING, GUYING AND MULCHING.

PLANT SIZE AND QUALITY

TREES, PALMS, SHRUBS, GROUNDCOVERS: PLANT SPECIES AND SIZES SHALL CONFORM TO THOSE INDICATED ON THE DRAWINGS. NURSERY STOCK SHALL BE IN ACCORDANCE WITH GRADES AND STANDARDS FOR NURSERY PLANTS PARTS 1 & II, LATEST EDITION PUBLISHED BY THE FLORIDA DEPARTMENT OF AGRICULTURE AND CONSERVATION...

ALL CONTAINER GROWN MATERIAL SHALL BE HEALTHY, VIGOROUS, WELL-ROOTED PLANTS AND ESTABLISHED IN THE CONTAINER IN WHICH THEY ARE SOLD.

MULCH SHALL BE SHREDDED CYPRESS MULCH. ALL MULCH IS TO BE APPLIED TO A DEPTH OF 3" EXCEPT FOR THOSE SPECIFIC SITUATIONS SHOWN BELOW IN SECTIONS 2.3 & 4

FERTILIZER IN BACKFILL MIXTURE FOR ALL PLANTS SHALL CONSIST OF MILORGANITE ACTIVATED SLUDGE MIXED WITH THE BACKFILL AT A RATE OF NOT LESS THAN 50 LBS. PER CUBIC YARD.

FERTILIZER FOR TREES AND SHRUBS MAY BE TABLET FORM OR GRANULAR. GRANULAR FERTILIZER SHALL BE UNIFORM IN COMPOSITION, DRY AND FREE-FLOWING.

FERTILIZER WILL BE APPLIED AT THE FOLLOWING RATES: PLANT SIZE 16-7-12 AGRIFORM TABLETS* (21 GRAM)

Table with 2 columns: PLANT SIZE and AGRIFORM TABLETS* (21 GRAM)

FERTILIZER FOR TREES AND SHRUBS MAY BE TABLET FORM OR GRANULAR. GRANULAR FERTILIZER SHALL BE UNIFORM IN COMPOSITION, DRY AND FREE-FLOWING.

FIELD GROWN TREES AND PALMS PREVIOUSLY ROOT PRUNED SHALL OBTAIN A ROOT BALL WITH SUFFICIENT ROOTS FOR CONTINUED GROWTH WITHOUT RESULTING SHOCK.

CONTRACTOR SHALL NOT MARK OR SCAR TRUNK IN ANY FASHION.

PLANTS SHALL BE WATERED AS NECESSARY OR WITHIN 24 HOURS AFTER NOTIFICATION BY THE LANDSCAPE ARCHITECT.

THE LOCATIONS OF PLANTS AS SHOWN IN THESE PLANS ARE APPROXIMATE.

ALL PLASTIC FABRIC SHALL BE REMOVED FROM PLANT MATERIAL AT TIME OF INSTALLATION.

ALL TREES MUST BE STAKED AS SHOWN ON THE PLANTING DETAILS WITHIN 24 HOURS OF PLANTING.

ALL TREES MUST BE PRUNED AS PER LANDSCAPE ARCHITECT'S DIRECTION.

ALL SHRUBS, TREES AND GROUND COVER WILL HAVE IMPROVED SOIL AS PER PLANTING SOIL NOTES.

DO NOT ALLOW AIR POCKETS TO FORM WHEN BACKFILLING. ALL TREES SHALL BE SPIKED IN UTILIZING WATER AND A TREE BAR.

THE LANDSCAPE CONTRACTOR SHALL WATER, MULCH, WEED, PRUNE, AND OTHERWISE MAINTAIN ALL PLANTS, INCLUDING SOIL, UNTIL COMPLETION OF CONTRACT OR ACCEPTANCE BY LANDSCAPE ARCHITECT.

UPON COMPLETION OF THE WORK, THE LANDSCAPE CONTRACTOR SHALL NOTIFY THE LANDSCAPE ARCHITECT AND REQUEST A FINAL INSPECTION.

ALL LABOR AND MATERIAL FOR SOIL AMENDMENTS AND FERTILIZER THAT IS REQUIRED TO INSURE THE SUCCESSFUL ESTABLISHMENT AND SURVIVAL OF THE PROPOSED VEGETATION, AS WELL AS ALL THE COST OF REMOVAL OF UNSUITABLE MATERIAL, SHALL BE INCLUDED IN THE CONTRACTOR'S BID TO PERFORM THE WORK REPRESENTED IN THIS PLAN SET.

2. PLANTING TREES

EXCAVATE PIT AS PER PLANTING DETAILS. COMPACT LAYER OF TOPSOIL IN PIT WITH A SLIGHTLY DISHED GRADE TO CENTER.

BACKFILL AROUND BALL WITH TOPSOIL AND SLIGHTLY COMPACT. WATER THOROUGHLY AS LAYERS ARE PLACED TO ELIMINATE VOIDS AND AIR POCKETS.

PRUNE TREE TO REMOVE DAMAGED BRANCHES, IMPROVE NATURAL SHAPE AND THIN OUT STRUCTURE.

3. PLANTING SHRUBS

LAYOUT SHRUBS TO CREATE A CONTINUOUS SMOOTH FRONT LINE AND FILL IN BEHIND.

EXCAVATE PIT OR TRENCH TO 2 TIMES THE DIAMETER OF THE BALLS OR CONTAINERS OR 1'-0" WIDER THAN THE SPREAD OF ROOTS AND 3" DEEPER THAN REQUIRED FOR POSITIONING AT FORMER HEIGHT.

PRUNE SHRUBS TO REMOVE DAMAGED BRANCHES, IMPROVE NATURAL SHAPE AND THIN OUT STRUCTURE.

4. PLANTING GROUND COVER

LOOSEN SUBGRADE TO DEPTH OF 4" IN AREAS WHERE TOPSOIL HAS BEEN STRIPPED AND SPREAD SMOOTH.

SPREAD PLANTS AS OTHERWISE INDICATED. DIG HOLES LARGE ENOUGH TO ALLOW SPREADING OF ROOTS.

DURING PERIODS OF HOT SUN AND/OR WIND AT TIME OF PLANTING, PROVIDE PROTECTIVE COVER FOR SEVERAL DAYS OR AS NEEDED.

5. PLANTING LAWNS

SODDING: SOD TYPE SPECIFIED ON PLANT LIST SHALL BE MACHINE STRIPPED NOT MORE THAN 24 HOURS PRIOR TO LAYING.

LOOSEN SUBGRADE TO DEPTH OF 4" AND GRADE WITH TOPSOIL EITHER PROVIDED ON SITE OR IMPORTED TO FINISH DESIGN ELEVATIONS.

FERTILIZE SOIL AT THE RATE OF APPROXIMATELY 10 LBS. PER 1,000 S.F. SPREAD FERTILIZER OVER THE AREA TO RECEIVE GRASSES BY USING AN APPROVED DISTRIBUTION DEVICE CALIBRATED TO DISTRIBUTE THE APPROPRIATE QUANTITY.

LAY SOD STRIPS WITH TIGHT JOINTS, DO NOT OVERLAP, STAGGER STRIPS TO OFFSET JOINTS IN ADJACENT COURSES.

6. MISCELLANEOUS LANDSCAPE WORK

LANDSCAPE MAINTENANCE

PLANT MATERIAL SUBSTITUTION

PLANTING BED PREPARATION

ALL PLANTING BEDS SHALL BE PROPERLY PREPARED PRIOR TO THE COMMENCEMENT OF ANY PLANTING.

ALL AREAS SHALL BE FULLY IRRIGATED IN ACCORDANCE WITH THE REQUIREMENTS OF THE CITY OF PORT ST. LUCIE.

LANDSCAPE IRRIGATION NOTES:

A. ALL AREAS TO RECEIVE 100% IRRIGATION COVERAGE

B. ALL ZONES TO BE AUTOMATICALLY CONTROLLED

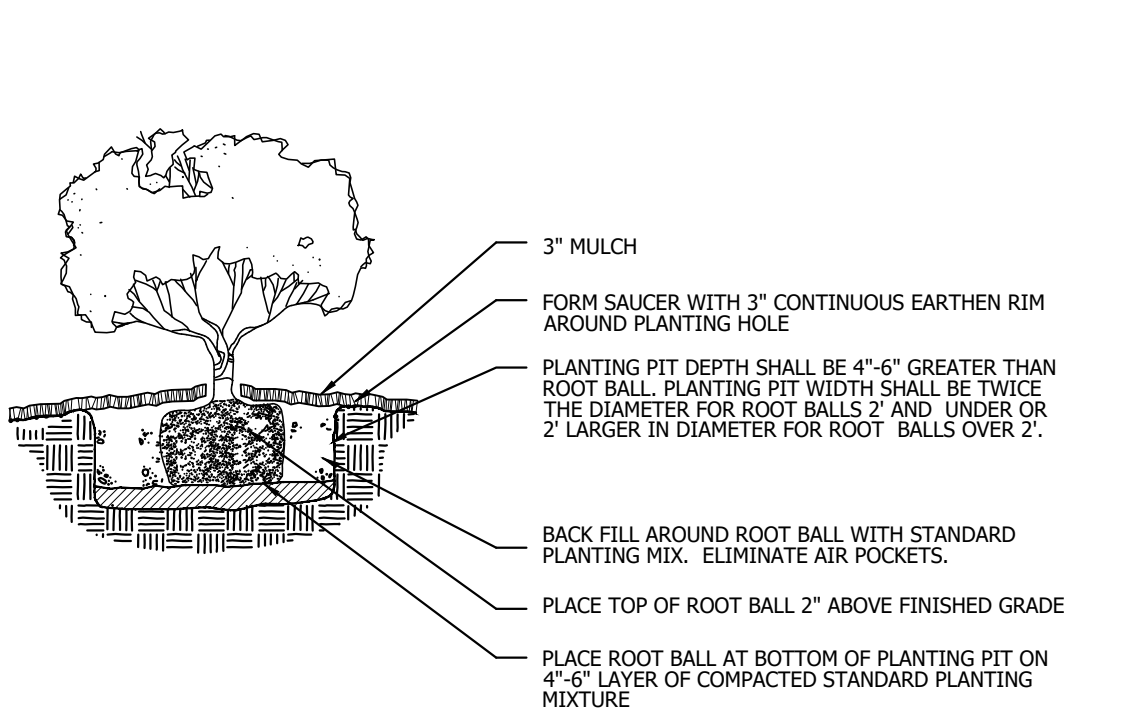
C. CLOCKS TO HAVE AUTOMATIC 'RAIN SENSORS'

D. WATER SOURCE MAY BE POTABLE OR WELL AND SHALL BE DETERMINED AT TIME OF BUILDING PERMIT APPLICATION

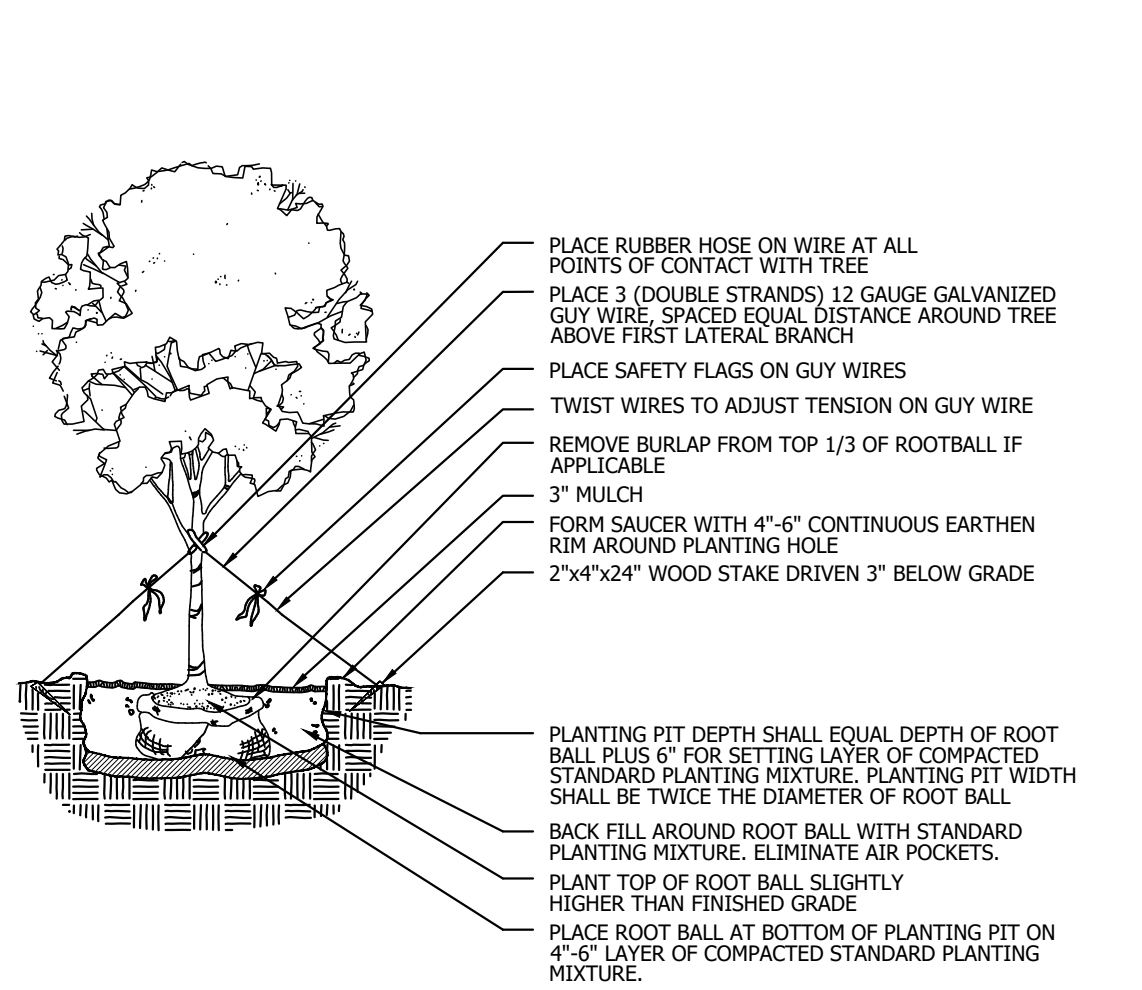
E. THE IRRIGATION SYSTEM WILL BE DESIGNED TO ACCEPT RECLAIMED WASTEWATER ONCE IT BECOMES AVAILABLE TO THE PROPERTY

NO LIGHT POLE OR ASSOCIATED CONDUIT SHALL BE LOCATED WITHIN 5' OF A PSLUD FACILITY.

PLANTING DETAILS



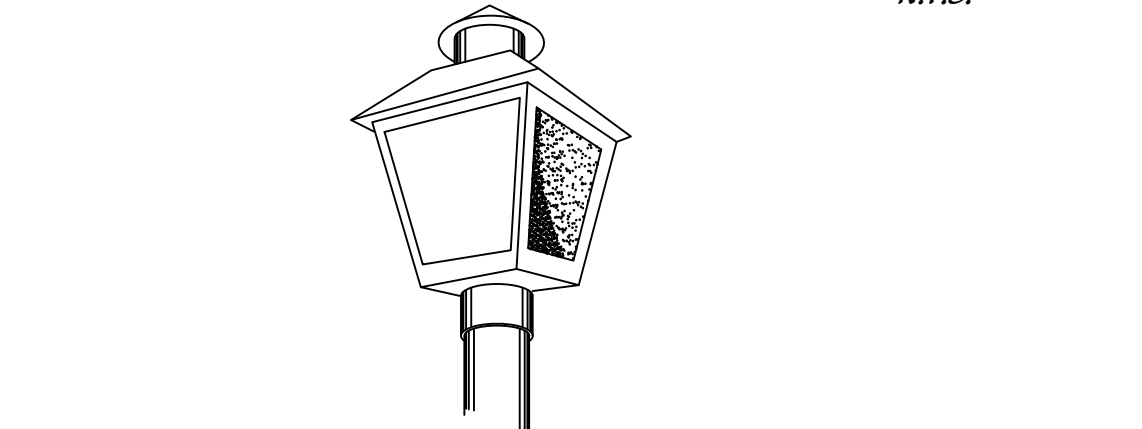
SHRUB/GROUNDCOVER PLANTING DETAIL



LARGE TREE PLANTING DETAIL



COACH LAMP (STREETLIGHTS)



LANDSCAPE NOTES

ALL LANDSCAPING AND SITE IMPROVEMENTS SHALL CONFORM TO ALL APPLICABLE PROVISIONS OF THE CITY OF PORT ST. LUCIE'S CHAPTER 153, LANDSCAPE AND LAND CLEARING CODE.

THE LANDSCAPE CONTRACTOR SHALL NOT MAKE ANY SUBSTITUTIONS OR CHANGES WITHOUT THE AUTHORIZATION OF THE OWNER AND THE LANDSCAPE ARCHITECT.

THE LANDSCAPE CONTRACTOR SHALL REVIEW THE PROJECT DRAINAGE PLANS AND VERIFY THE LOCATION OF ALL UNDERGROUND UTILITIES PRIOR TO CONSTRUCTION AND AVOID ALL CONFLICTS.

ALL LANDSCAPE PLANTED IN THE RIGHT-OF-WAY AND ON PRIVATE PROPERTY SHALL BE LOCATED SO THAT NO CONFLICT OCCURS WITH VEHICULAR SIGHT DISTANCES AT INTERSECTIONS AND AT DESIGNATED PEDESTRIAN CROSSWALKS.

NO FENCE, WALL, HEDGE, OR SHRUB PLANTING WHICH OBSTRUCTS SIGHT LINES AND ELEVATIONS BETWEEN TWO (2) AND SIX (6) FEET ABOVE THE CROWN OF THE ROAD SHALL BE PLACED OR PERMITTED TO REMAIN ON ANY CORNER LOT IN ANY ZONING DISTRICT WITHIN THE TRIANGULAR AREA FORMED BY THE STREET PROPERTY LINES AND A LINE CONNECTING THEM AT POINTS TWENTY-FIVE (25) FEET FROM THE INTERSECTION OF THE STREET LINES, OR IN THE CASE OF A ROUNDED PROPERTY CORNER FROM THE INTERSECTION OF THE STREET PROPERTY LINES EXTENDED.

ALL LANDSCAPING SHALL BE LOCATED IN THE RIGHT-OF-WAY AND OR ON PRIVATE PROPERTY SO THAT NO CONFLICT OCCURS WITH DESIGNATED CITY DRAINAGE AND / OR UTILITY EASEMENTS, OVERHEAD AND UNDERGROUND UTILITY LINES AND OR UTILITY STRUCTURES.

TREES AT ENTRANCEWAYS SHALL BE LIMBED UP TO MAXIMIZE SITE DISTANCE.

PLANTING LINES WITHIN AND ADJACENT TO PARKING AREAS SHALL BE FREE OF LIME ROCK AND OTHER FOREIGN MATERIALS TO A DEPTH OF 30"

THE SURFACE OF ALL AREAS TO RECEIVE LANDSCAPING WILL BE FINELY GRADED AND SET SO DIPS AND DEPRESSIONS ARE REMOVED AND POSITIVE DRAINAGE IS ACHIEVED.

ALL AREAS SHALL BE FULLY IRRIGATED IN ACCORDANCE WITH THE REQUIREMENTS OF THE CITY OF PORT ST. LUCIE.

ALL PLANTS PLANTED IN UNDERGROUND UTILITIES SHALL BE PROTECTED AND MAINTAINED TO REMAIN WITHIN THE ABOVE DESCRIBED LIMITS OF INTERSECTIONS UNLESS THE FOLIAGE LINE IS MAINTAINED AT OR ABOVE SIX (6) FEET ABOVE THE ROADWAY INTERSECTION ELEVATION TO PREVENT OBSTRUCTION OF SIGHT LINES.

ALL LANDSCAPING SHALL BE PLACED IN A MANNER THAT WOULD CREATE CONFLICTS WITH THE INTENDED OPERATION AND MAINTENANCE OF ANY EXISTING OR PROPOSED WATER/WASTEWATER UTILITY LINES.

ALL TREES SHALL NOT BE PLANTED WITHIN 10 FEET OF ANY PSLUD MAINS OR APPURTENANCES.

NO LANDSCAPING OTHER THAN SOD GRASSES MAY BE PLANTED WITHIN A 5' RADIUS MAINTENANCE AREA OF ANY PSLUD APPURTENANCE SUCH AS WATER METERS, BACKFLOW DEVICES, FIRE HYDRANTS, SANITARY SEWER CLEANOUTS, AND MANHOLES, AIR RELEASE VALVES, ETC.

ALL LANDSCAPING WITHIN PORT ST. LUCIE UTILITY SYSTEMS DEPARTMENT (PSLUD) UTILITY EASEMENTS SHALL COMPLY WITH PSLUD TECHNICAL SPECIFICATIONS, POLICIES, AND CODES.

NO LANDSCAPING SHALL BE PLANTED IN A MANNER THAT WOULD ADVERSELY AFFECT UTILITY EASEMENTS, LANDSCAPING SHALL BE IN COMPLIANCE WITH CHAPTER 153 OF THE CITY OF PORT ST. LUCIE CODE OF ORDINANCES, PSLUD TECHNICAL SPECIFICATIONS AND POLICIES.

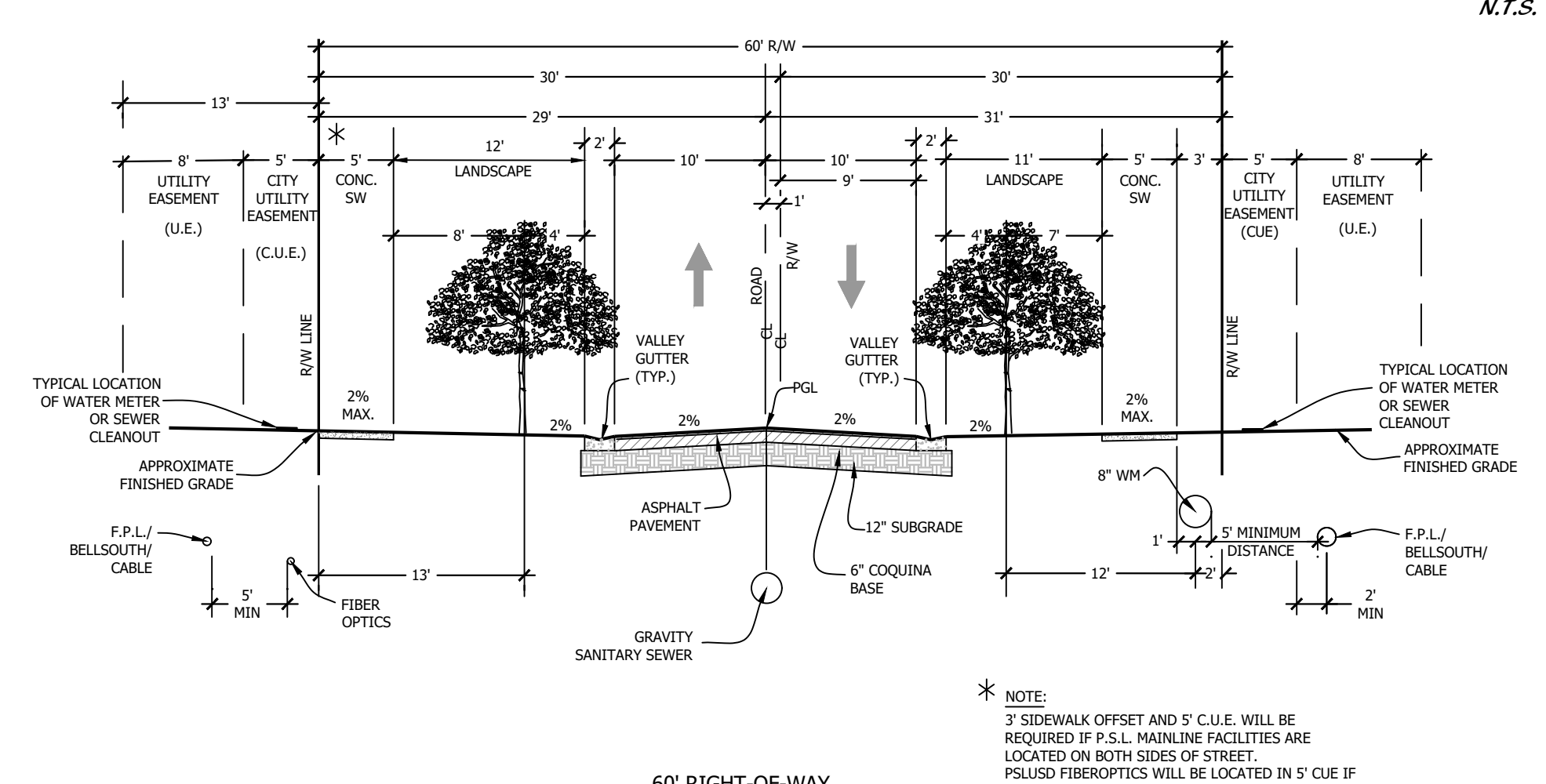
ALL TREES SHALL NOT BE PLANTED WITHIN TEN (10) FEET OF ANY PSLUD UNDERGROUND INFRASTRUCTURE.

NO LANDSCAPING SHALL BE PLANTED IN A MANNER THAT WOULD ADVERSELY AFFECT UTILITY EASEMENTS, LANDSCAPING SHALL BE IN COMPLIANCE WITH CHAPTER 153 OF THE CITY OF PORT ST. LUCIE CODE OF ORDINANCES, PSLUD TECHNICAL SPECIFICATIONS AND POLICIES.

ALL LANDSCAPING WITHIN PORT ST. LUCIE UTILITY SYSTEMS DEPARTMENT (PSLUD) UTILITY EASEMENTS SHALL COMPLY WITH PSLUD TECHNICAL SPECIFICATIONS, POLICIES, AND CODES.

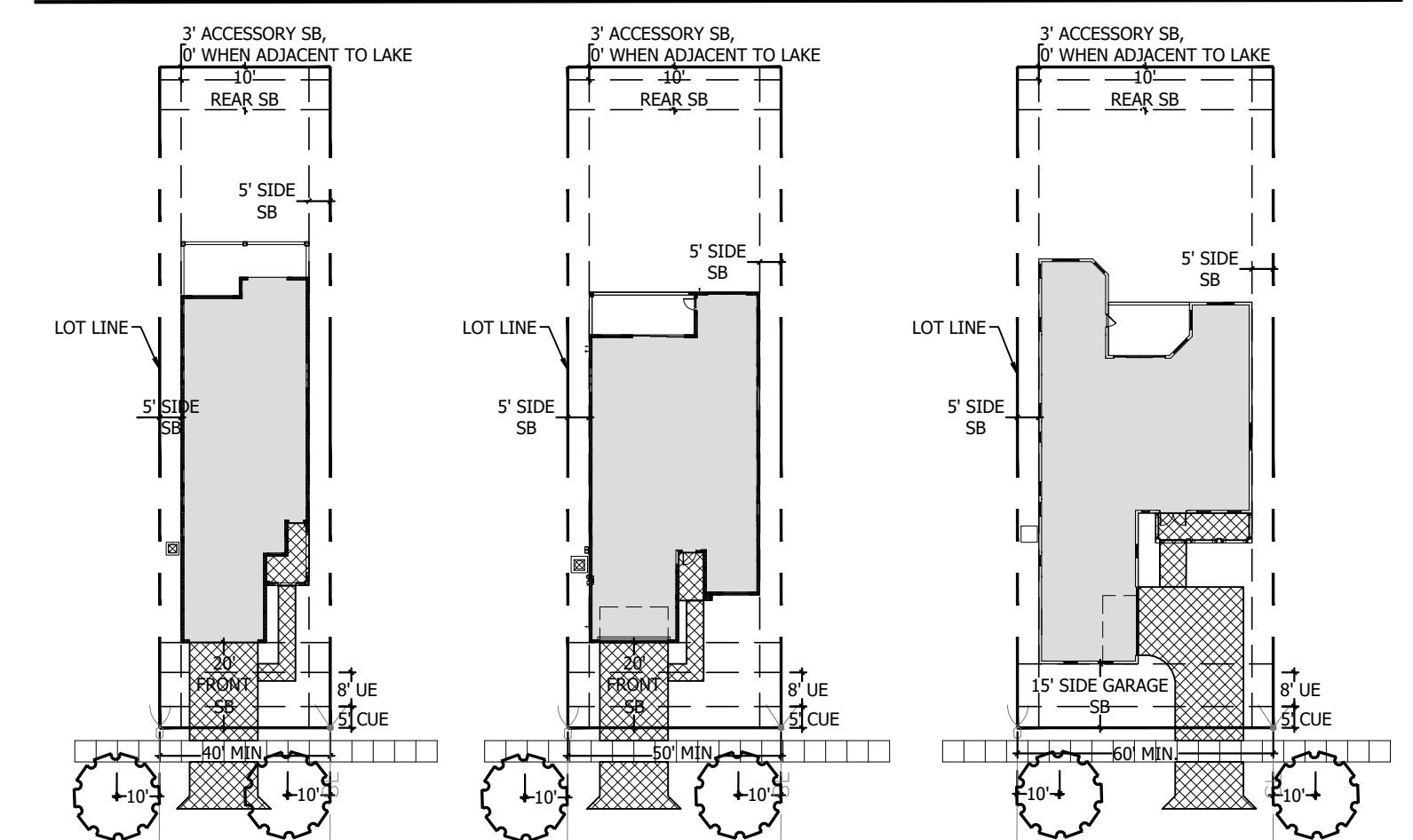
NO LIGHT POLE OR ASSOCIATED CONDUIT SHALL BE LOCATED WITHIN 5' OF A PSLUD FACILITY.

TYPICAL 60' RIGHT-OF-WAY SECTION



NOTE: 3' SIDEWALK OFFSET AND 5' C.U.E. WILL BE REQUIRED IF P.S.I. MAINLINE FACILITIES ARE LOCATED ON BOTH SIDES OF STREET.

LOT TYPICALS



PLANT LIST

Table listing plants with columns for botanical name, common name, quantity, size, and remarks.

Table listing plants with columns for botanical name, common name, quantity, size, and remarks.

PSLUD # 11-652-36F
PSL PROJ# 21-207
POD G PLAT 4
LANDSCAPE DETAILS

Cotleur & Hearing
Landscape Architects
Land Planners
Environmental Consultants
1934 Commerce Lane
Suite 1
Jupiter, Florida 33458
561.747.6336 - Fax 747.1377
www.cotleurhearing.com
Lic# LC-C000239

VERANO SOUTH
Kotler Homes
Port St. Lucie, Florida

DESIGNED LAH
DRAWN LAH
DATE 09-01-21
REVISIONS 10-01-21
11-17-21
12-28-21
SHEET 5 OF 5

© COTLEUR & HEARING, INC.
These drawings are the property of the architect and are not to be used for extensions or other projects except by agreement in writing with the architect.