

Cotleur & Hearing

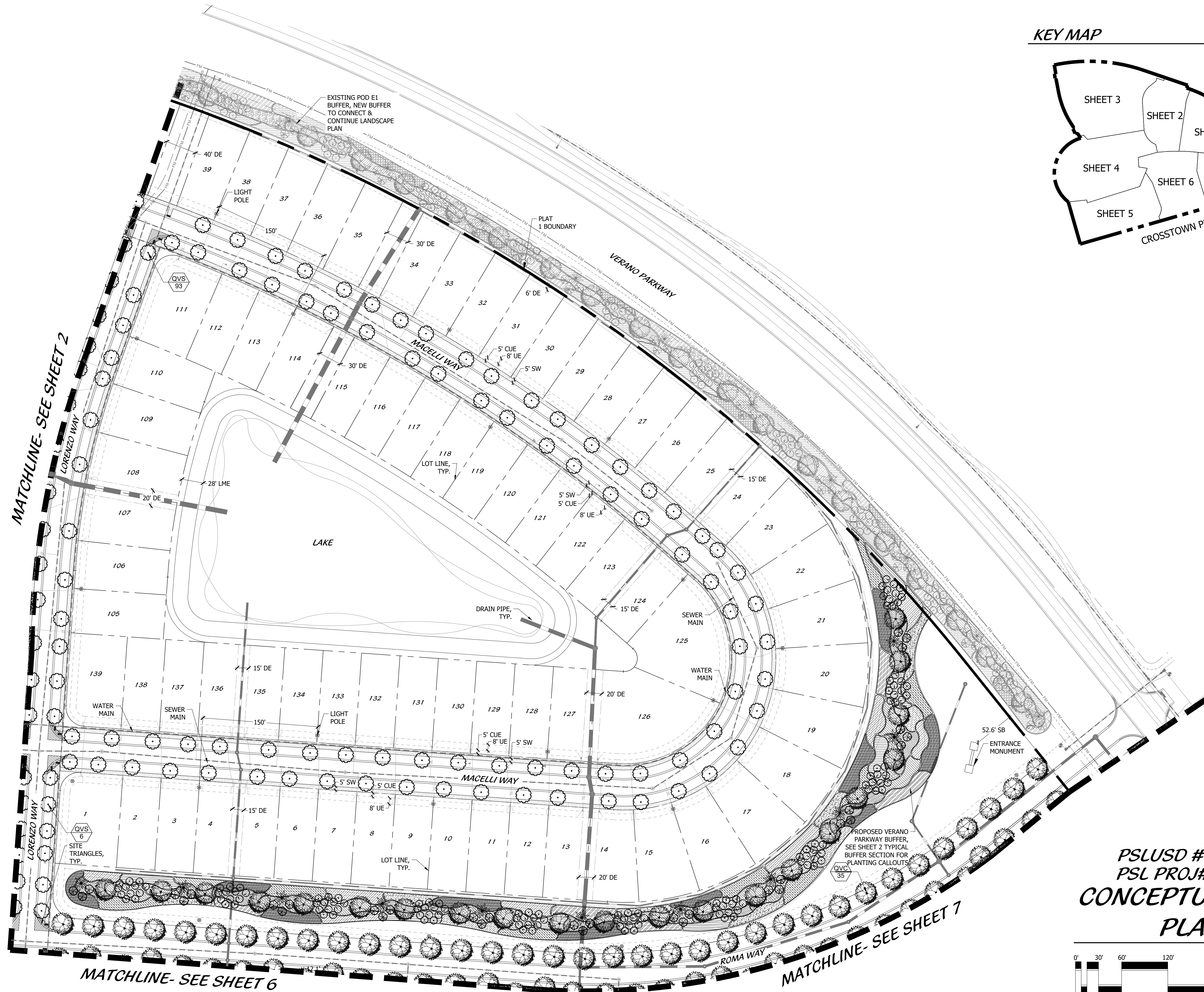
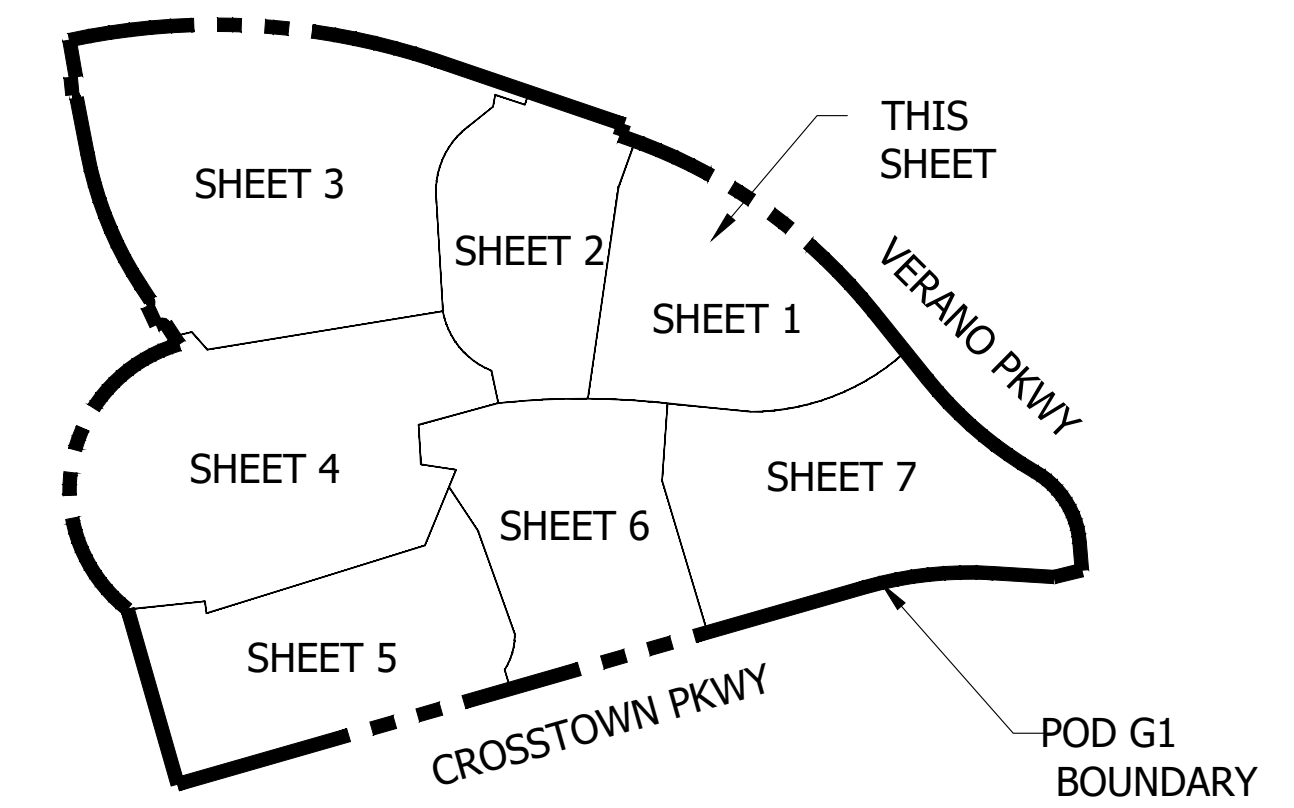
Landscape Architects
Land Planners
Environmental Consultants

1934 Commerce Lane
Suite 1
Jupiter, Florida 33458
561.747.6336 · Fax 747.1377
www.cotleurhearing.com
Lic# LC-C000239

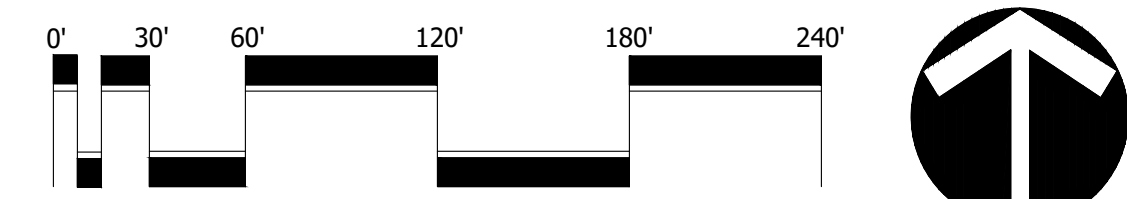
VERANO SOUTH POD G

Kolter Homes
Port St. Lucie, Florida

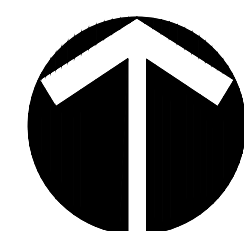
KEY MAP



PSLUSD #11-652-36
PSL PROJ# P20-157
CONCEPTUAL POD G
PLAT 1



Scale: 1" = 60'-0"



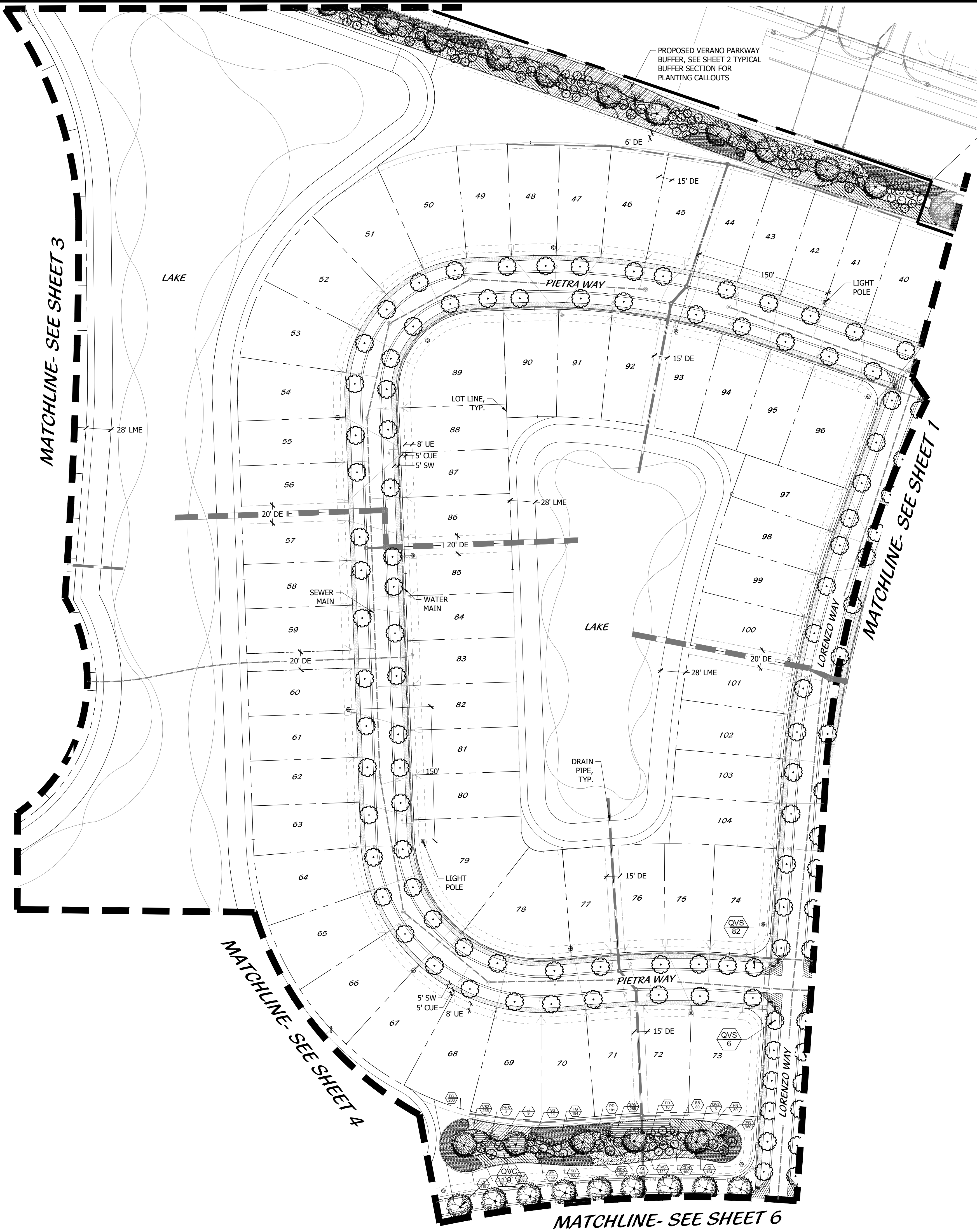
North

DESIGNED	LAH
DRAWN	LAH
APPROVED	DTS
JOB NUMBER	18-1003
DATE	08-19-20
REVISIONS	10-30-20

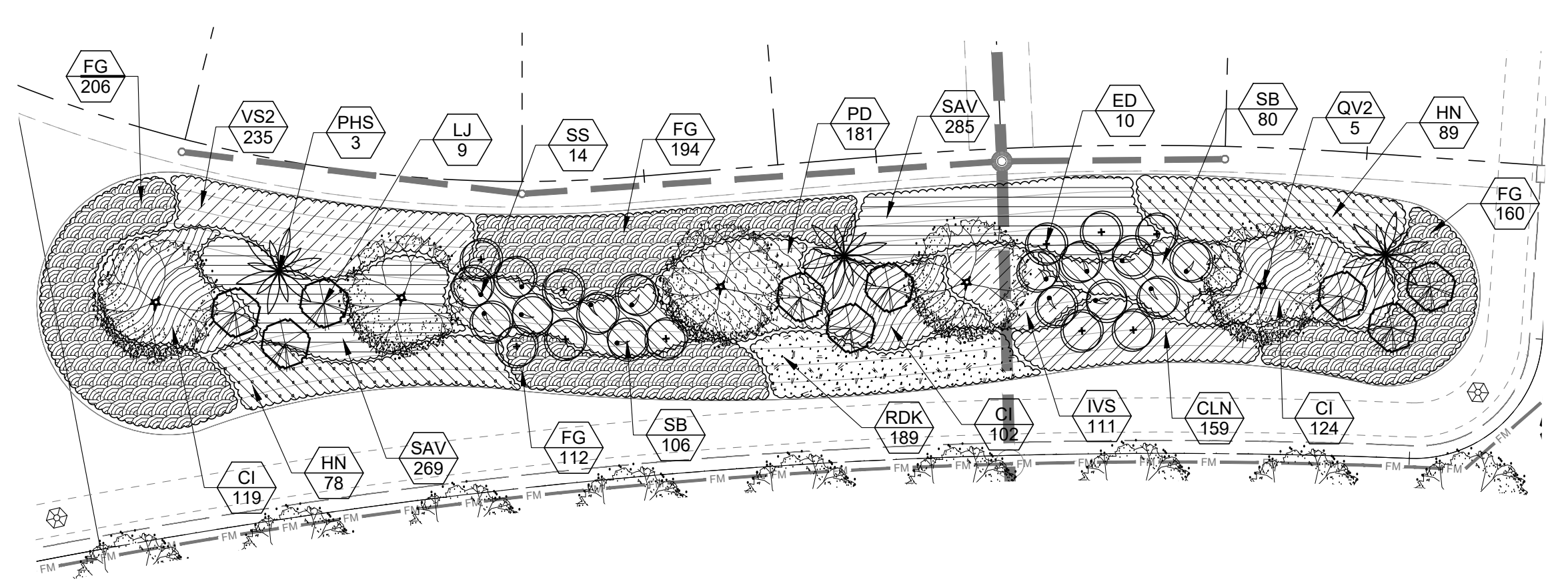
October 30, 2020 9:49:37 a.m.
Drawing: 18-1003_PLAT 1_10-29-20.DWG

SHEET 1 OF 9

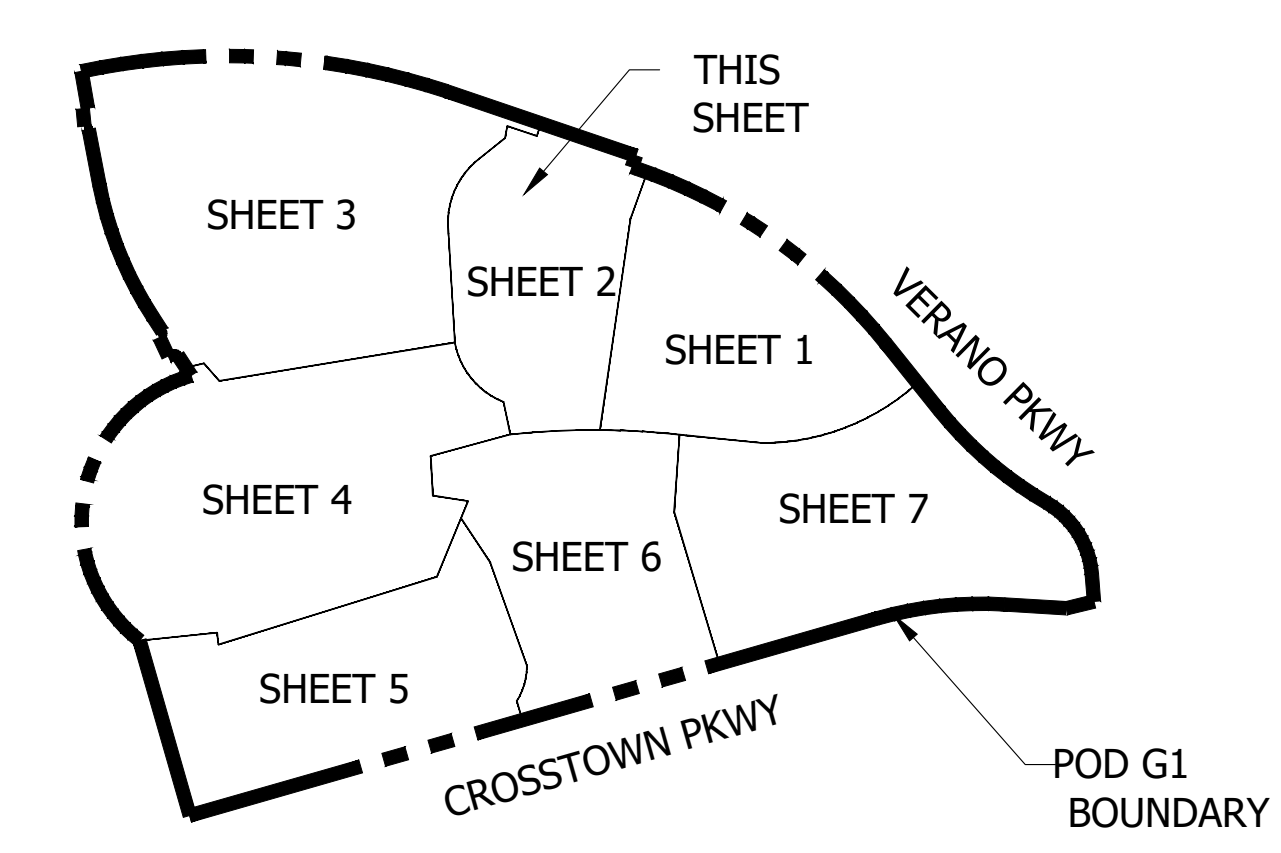
© COTLEUR & HEARING, INC.
These drawings are the property of the architect and are not to be used for extensions or on other projects except by agreement in writing with the architect. Immediately report any discrepancies to the architect.



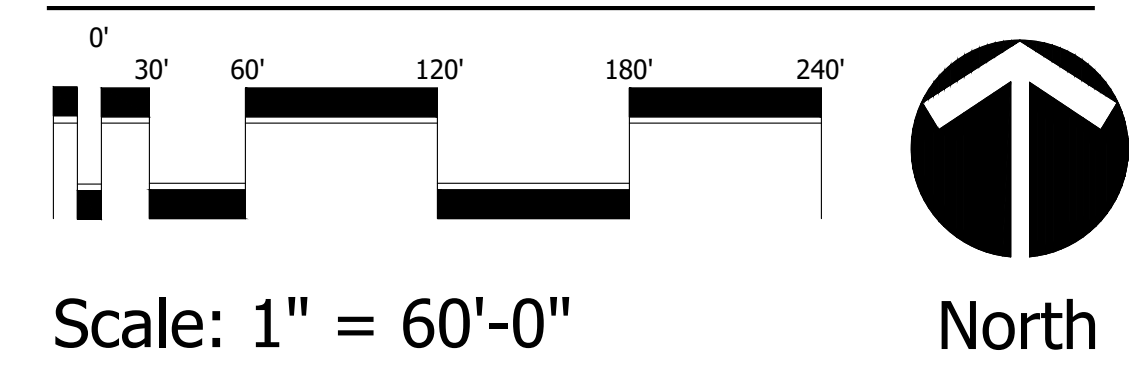
TYPICAL BUFFER SECTION
SCALE 1"=30'-0"



KEY MAP



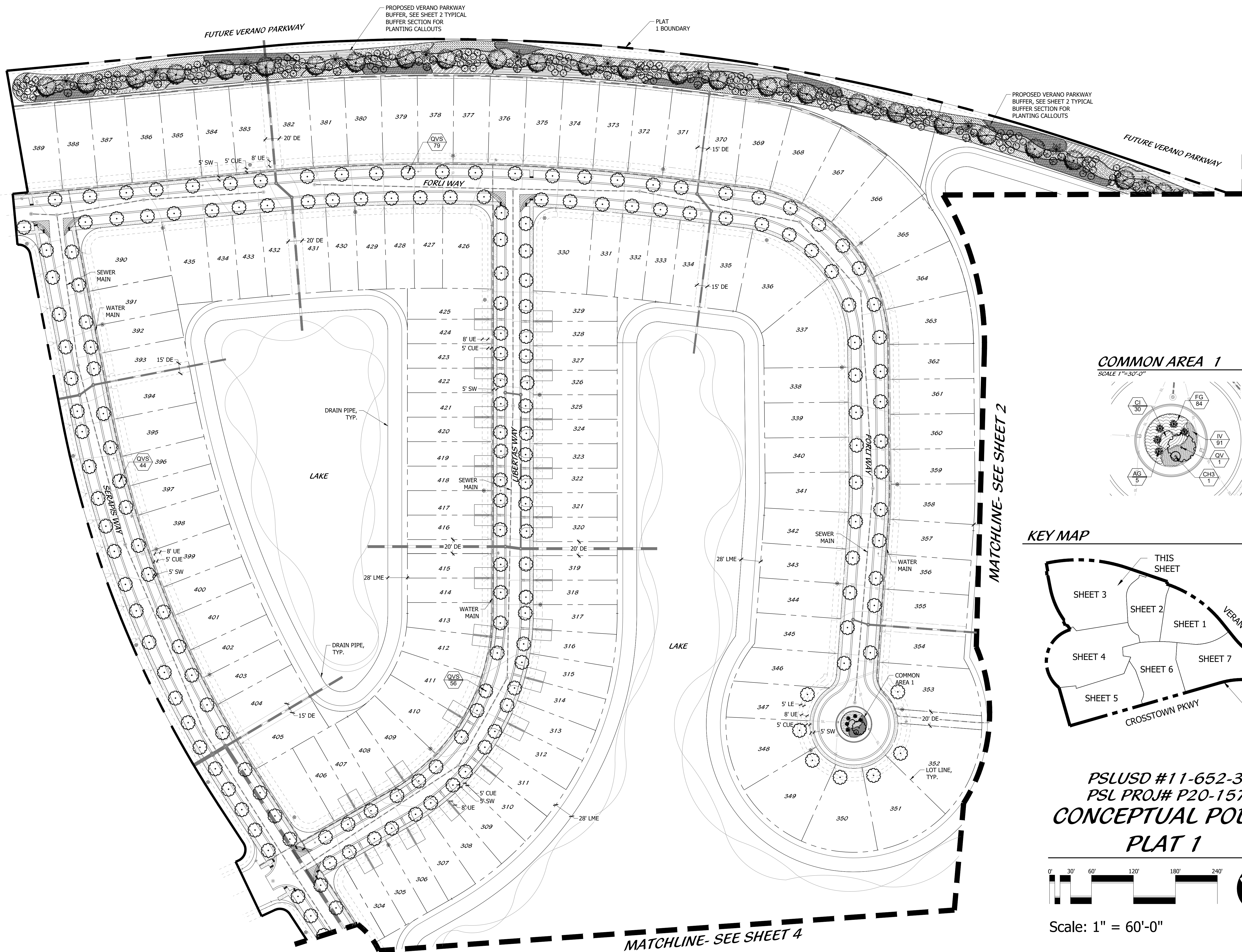
PSLUSD #11-652-36
PSL PROJ# P20-157
CONCEPTUAL POD G
PLAT 1



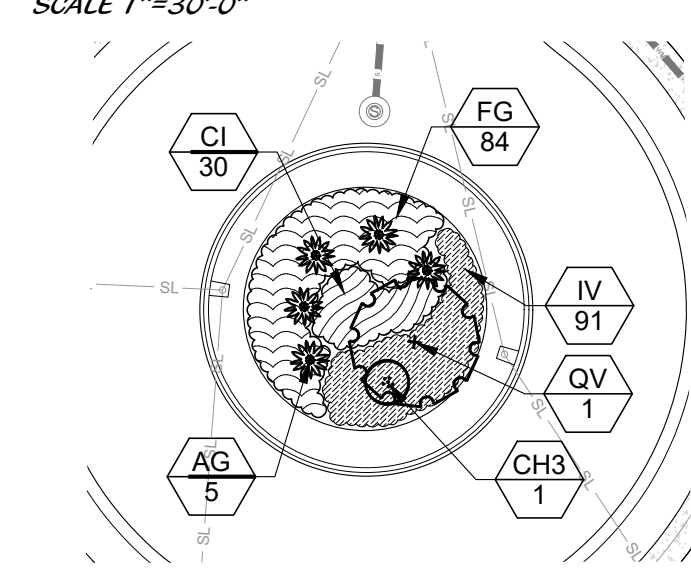
VERANO SOUTH POD G
Kolter Homes
Port St. Lucie, Florida

DESIGNED	LAH
DRAWN	LAH
APPROVED	DTS
JOB NUMBER	18-1003
DATE	08-19-20
REVISIONS	10-30-20

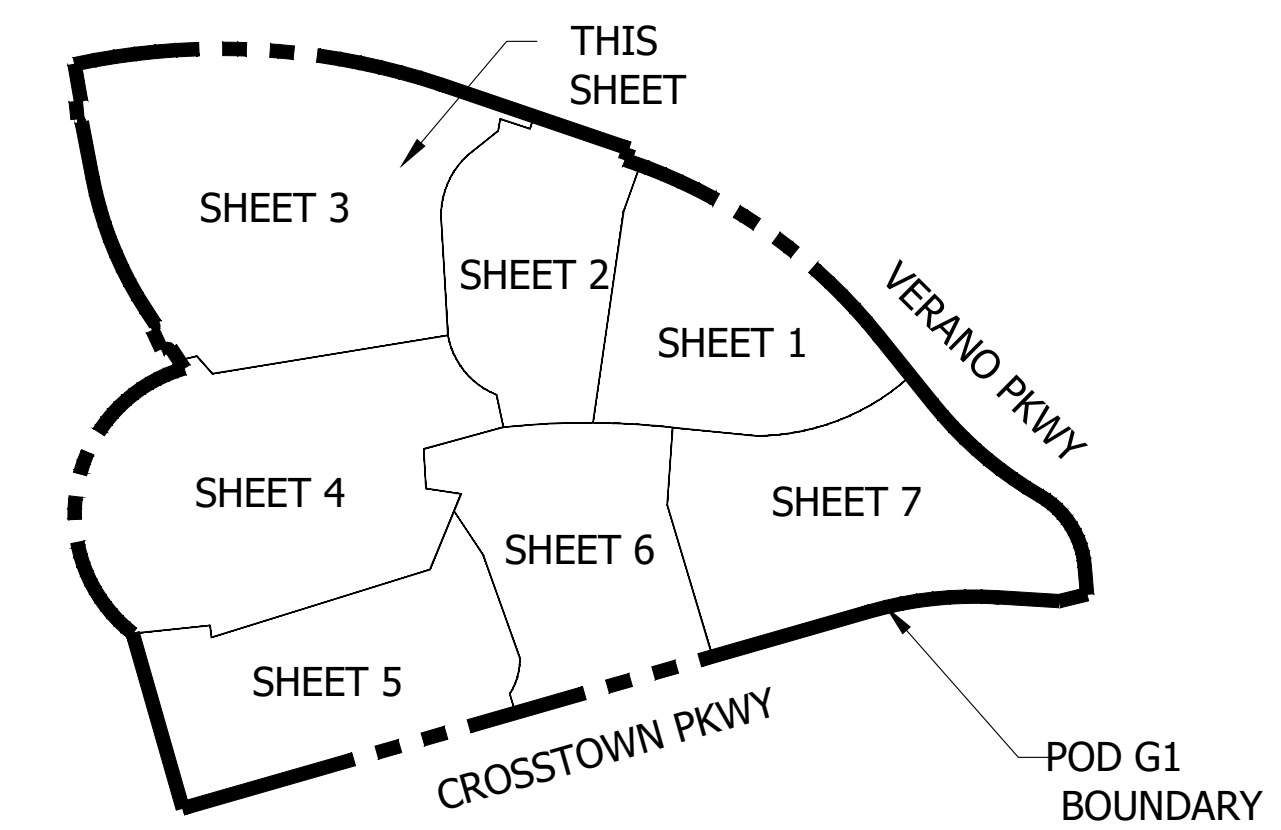
October 30, 2020 9:49:37 a.m.
Drawing: 18-1003_PLAT 1_10-29-20.DWG



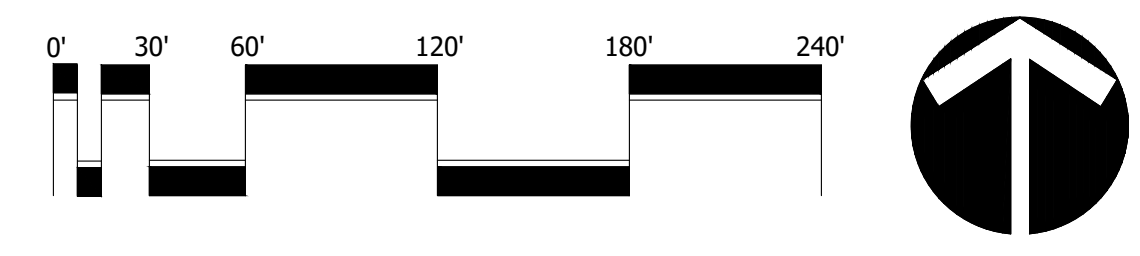
COMMON AREA 1
SCALE 1"=30'-0"



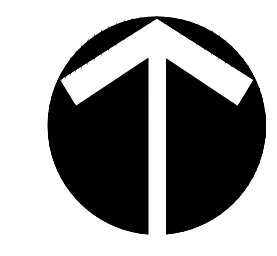
KEY MAP



PSLUSD #11-652-36
PSL PROJ# P20-157
CONCEPTUAL POD G
PLAT 1



Scale: 1" = 60'-0"



North

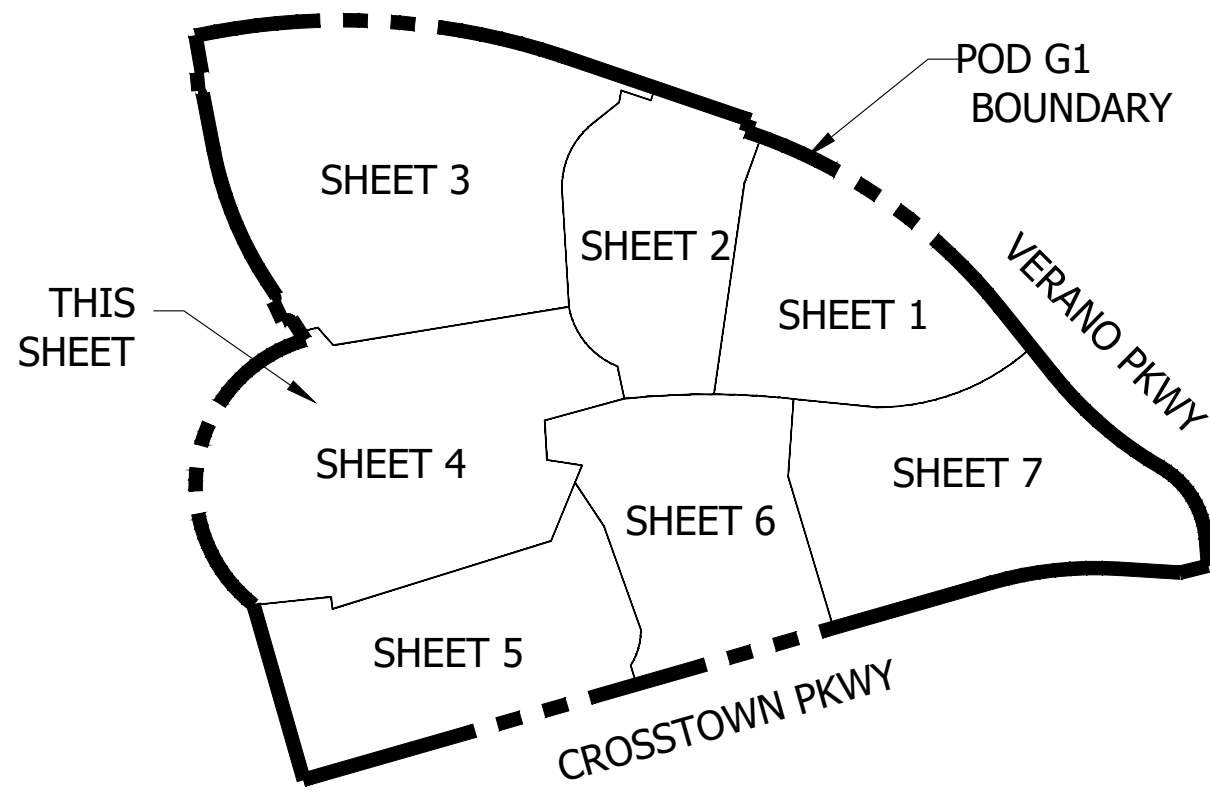
Cotleur & Hearing
Landscape Architects
Land Planners
Environmental Consultants
1934 Commerce Lane
Suite 1
Jupiter, Florida 33458
561.747.6336 • Fax 747.1377
www.cotleurhearing.com
Lic# LC-C000239

VERANO SOUTH POD G
Koiter Homes
Port St. Lucie, Florida

DESIGNED	LAH
DRAWN	LAH
APPROVED	DTS
JOB NUMBER	18-1003
DATE	08-19-20
REVISIONS	10-30-20

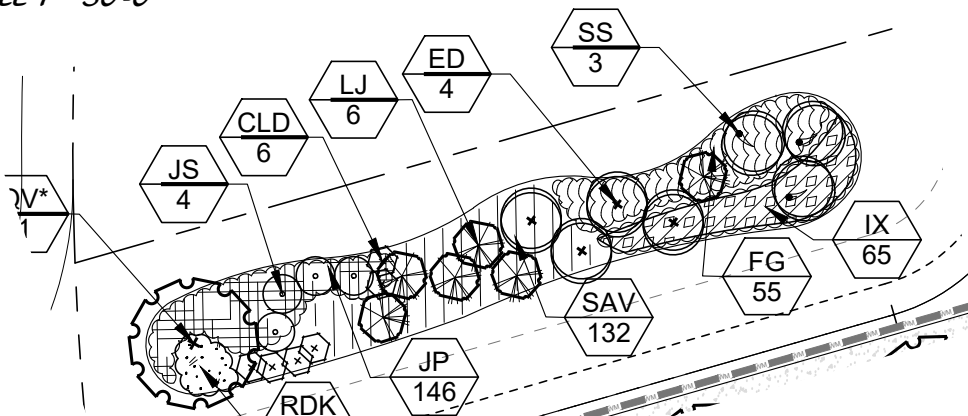
October 30, 2020 9:49:37 a.m.
Drawing: 18-1003_PLAT 1_10-29-20.DWG

KEY MAP



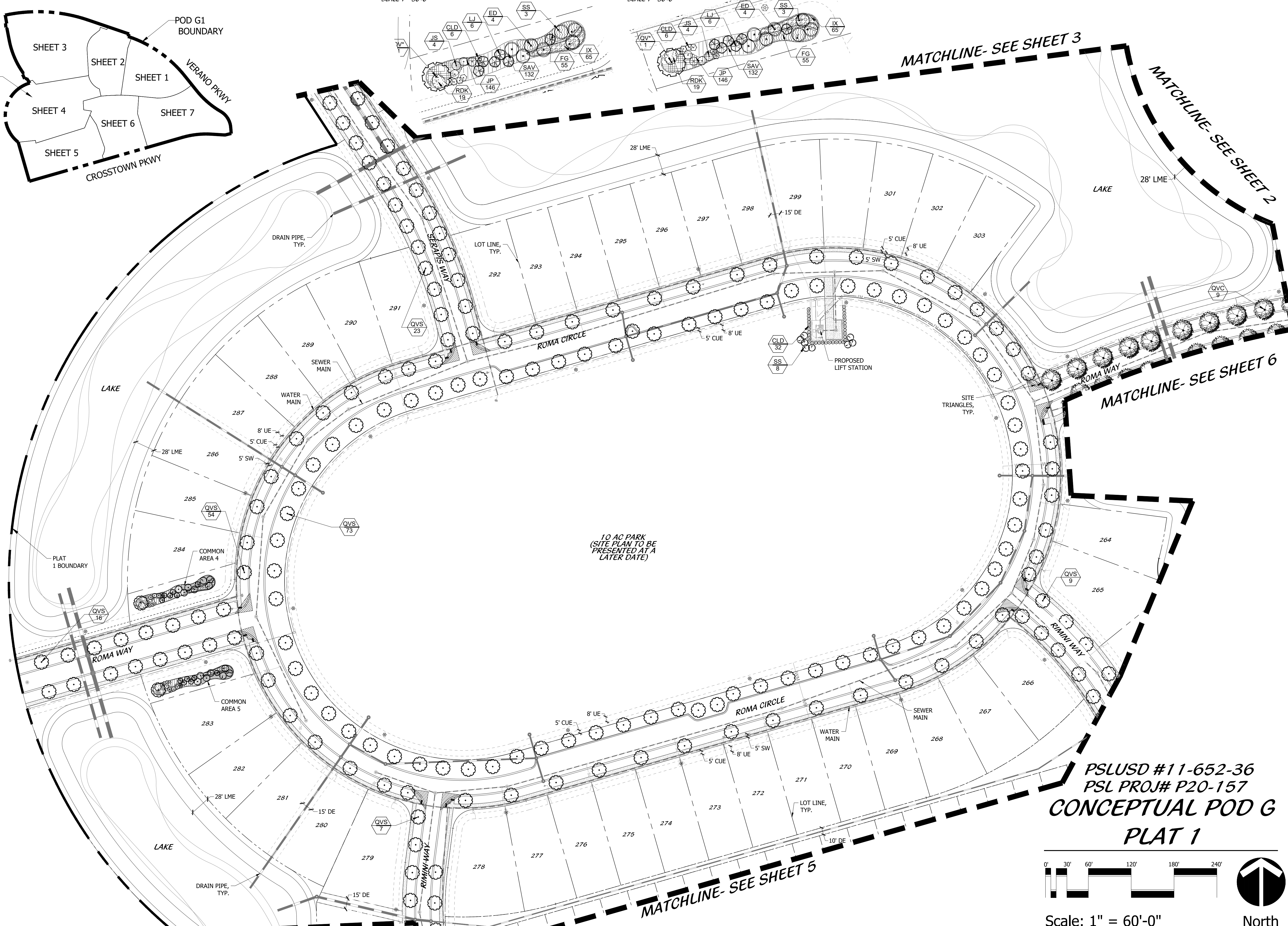
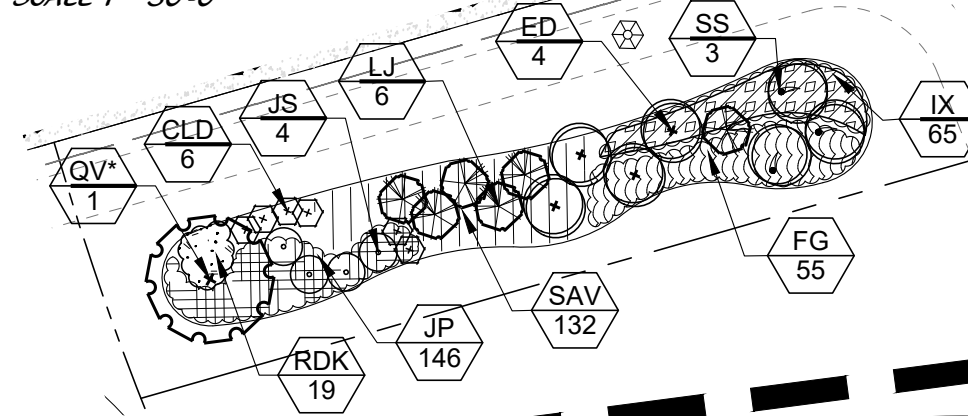
COMMON AREA 4

SCALE 1"=30'-0"



COMMON AREA 45

SCALE 1"=30'-0"



10 AC PARK
(SITE PLAN TO BE
PRESENTED AT A
LATER DATE)

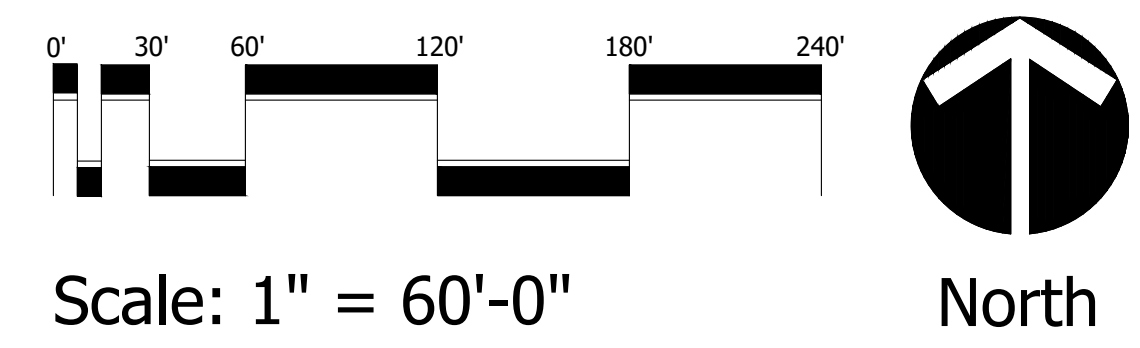
MATCHLINE- SEE SHEET 3

MATCHLINE- SEE SHEET 2

MATCHLINE- SEE SHEET 6

MATCHLINE- SEE SHEET 5

PSLUSD #11-652-36
PSL PROJ# P20-157
CONCEPTUAL POD G
PLAT 1



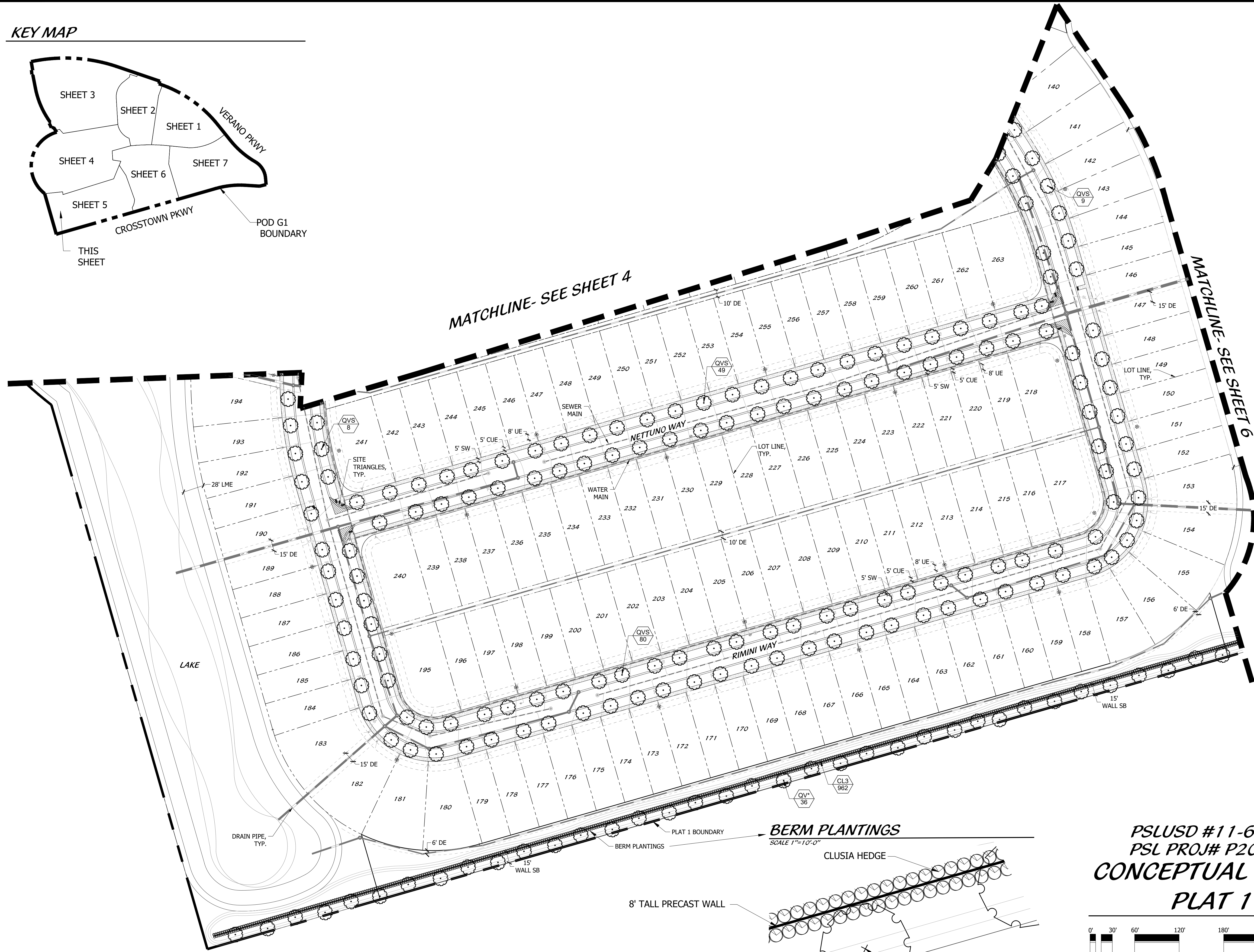
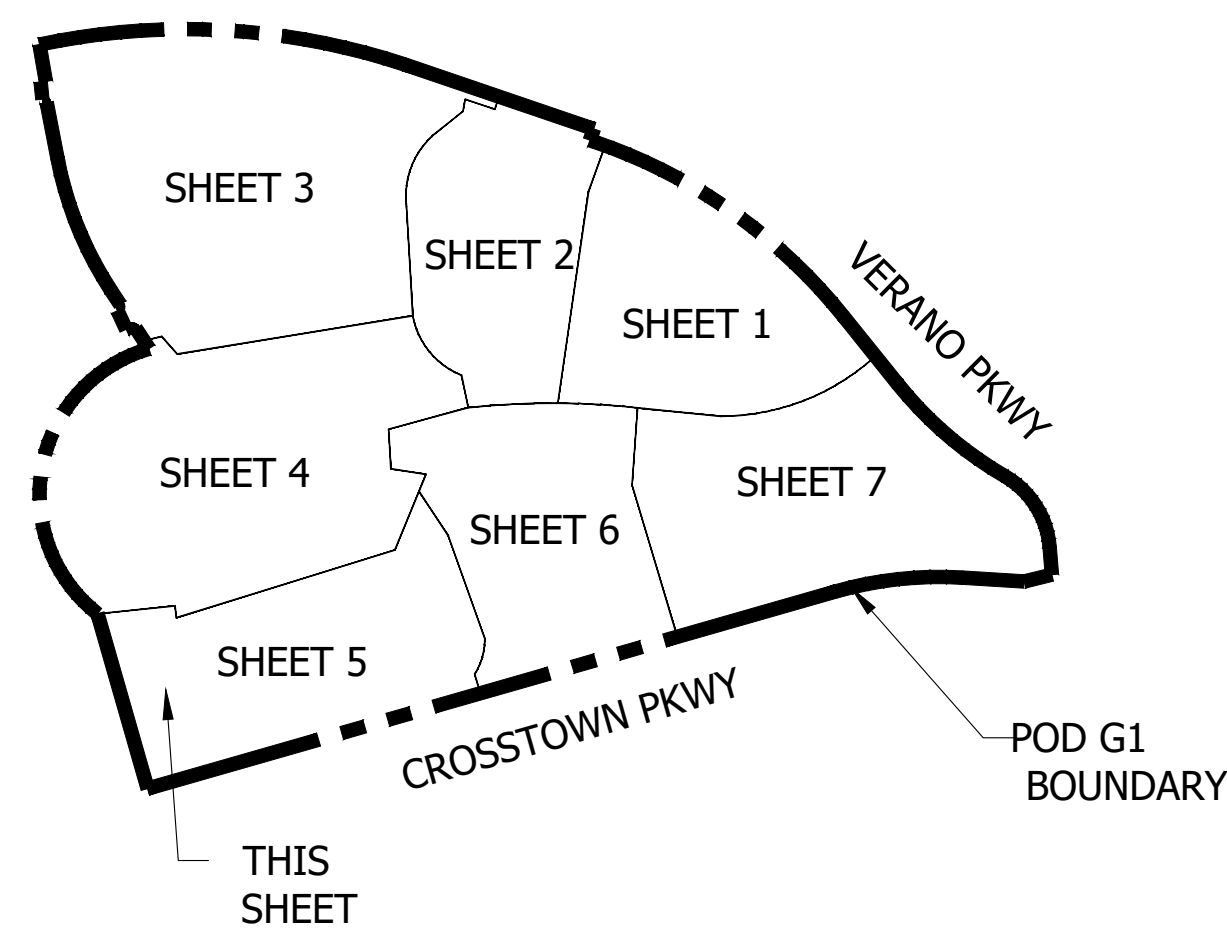
Cotleur & Hearing
Landscape Architects
Land Planners
Environmental Consultants
1934 Commerce Lane
Suite 1
Jupiter, Florida 33458
561.747.6336 • Fax 747.1377
www.cotleurhearing.com
Lic# LC-C000239

VERANO SOUTH POD G
Koiter Homes
Port St. Lucie, Florida

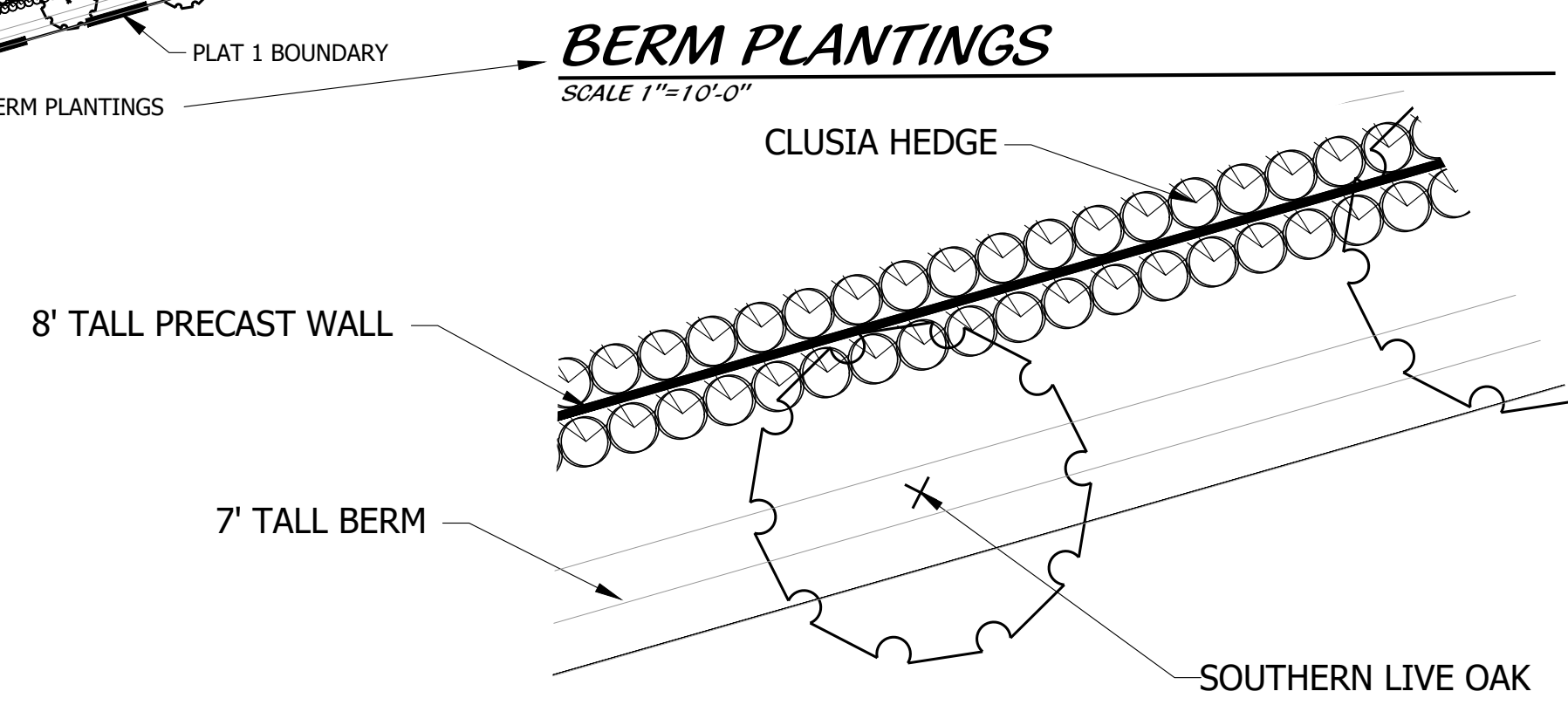
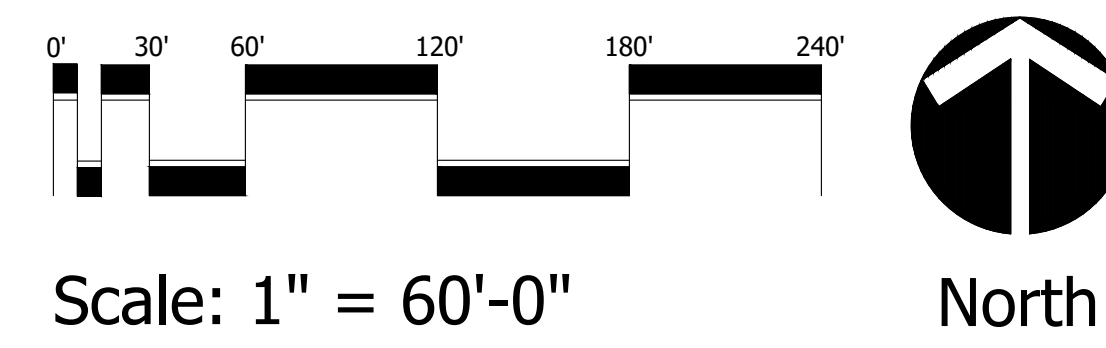
DESIGNED	LAH
DRAWN	LAH
APPROVED	DTS
JOB NUMBER	18-1003
DATE	08-19-20
REVISIONS	10-30-20

October 30, 2020 9:49:37 a.m.
Drawing: 18-1003_PLAT 1_10-29-20.DWG

KEY MAP



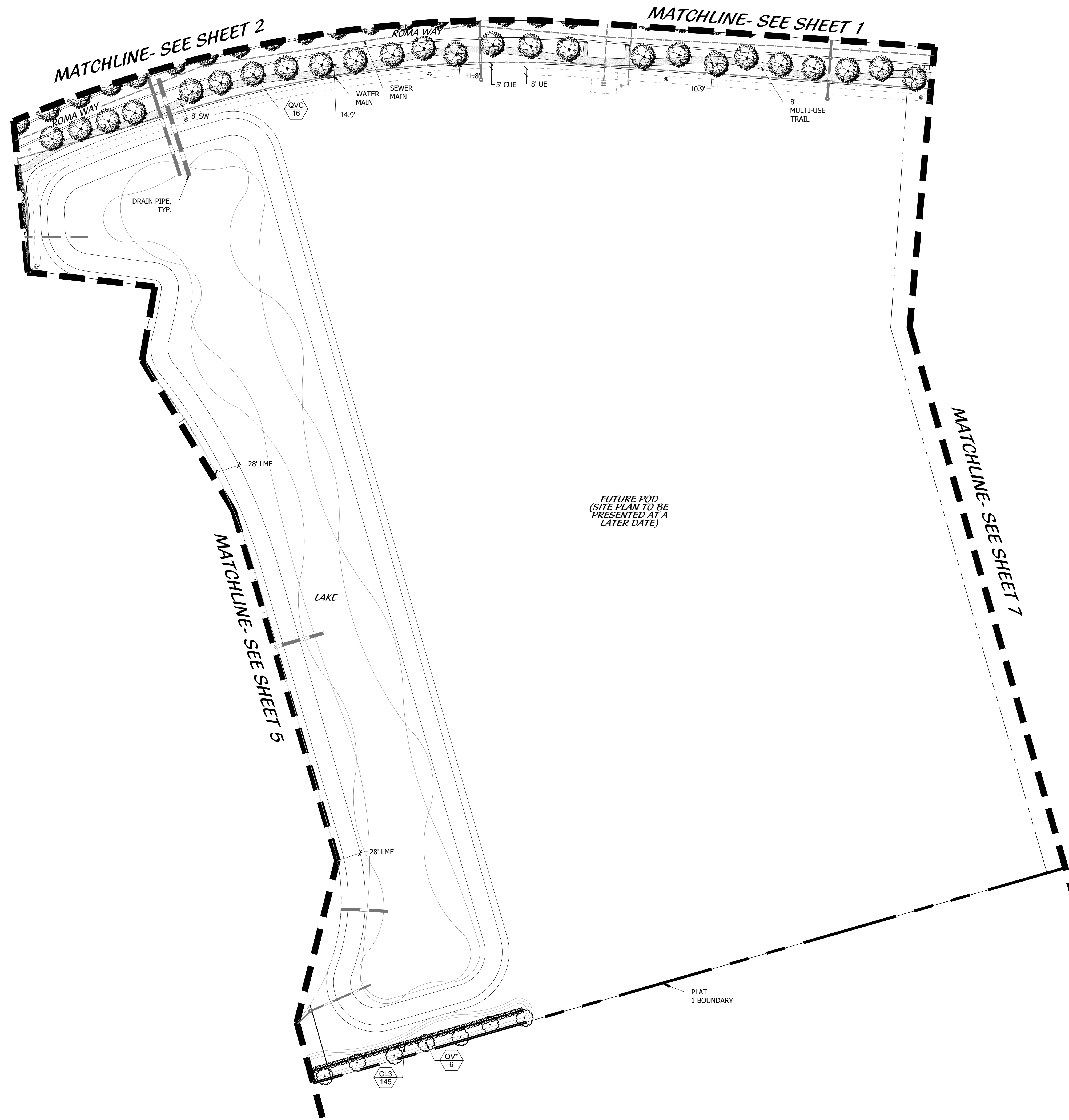
PSLUSD #11-652-36
 PSL PROJ# P20-157
CONCEPTUAL POD G
PLAT 1



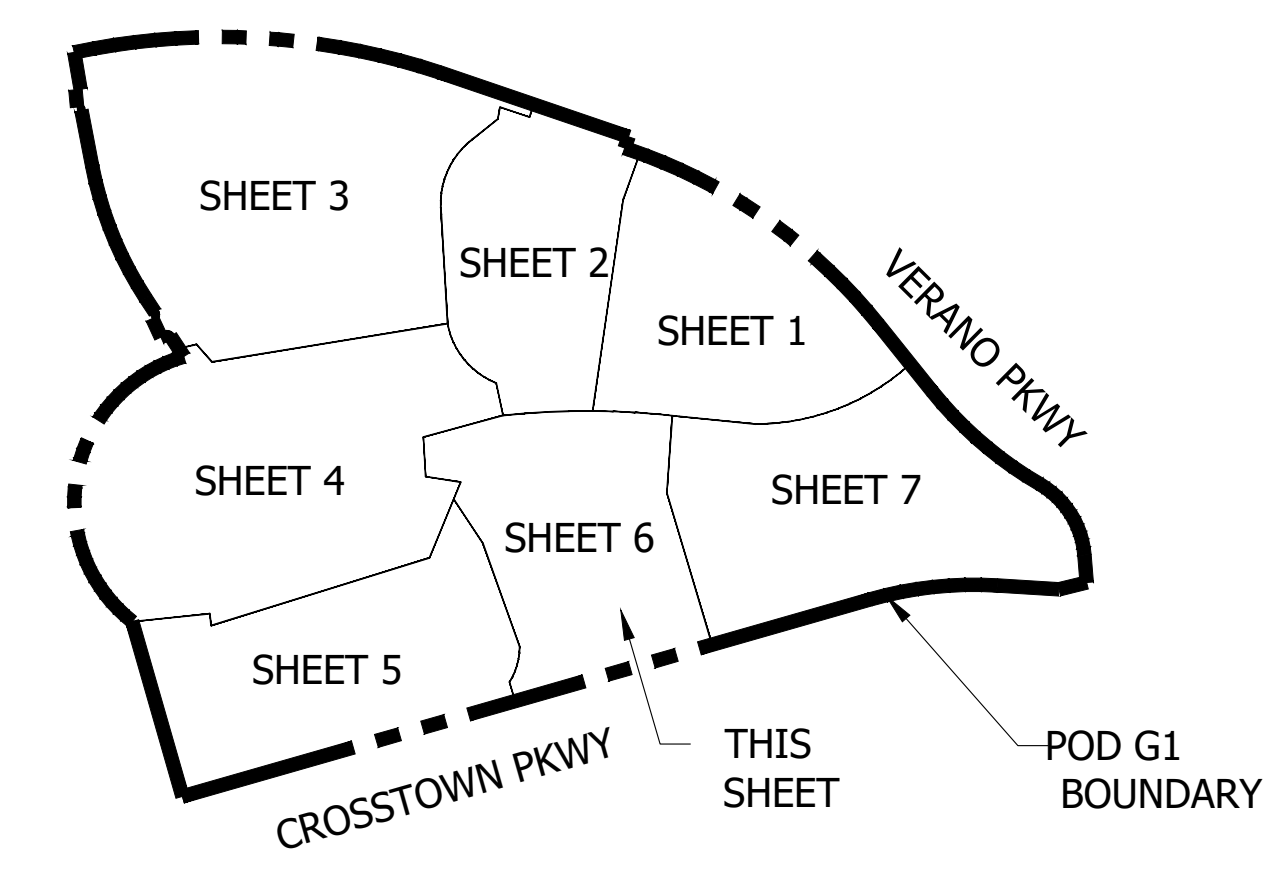
VERANO SOUTH POD G
 Koiter Homes
 Port St. Lucie, Florida

DESIGNED	LAH
DRAWN	LAH
APPROVED	DTS
JOB NUMBER	18-1003
DATE	08-19-20
REVISIONS	10-30-20

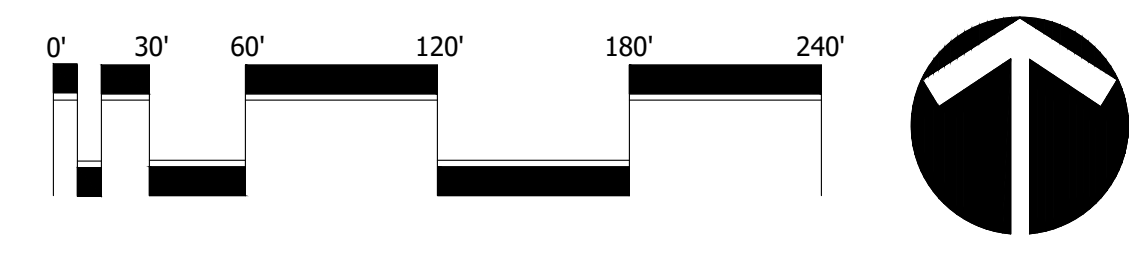
October 30, 2020 9:49:37 a.m.
 Drawing: 18-1003_PLAT 1_10-29-20.DWG



KEY MAP



PSLUSD #11-652-36
 PSL PROJ# P20-157
CONCEPTUAL POD G
PLAT 1

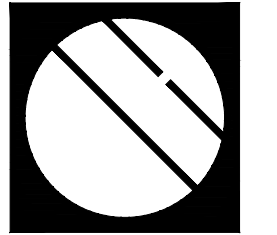


Scale: 1" = 60'-0"

VERANO SOUTH POD G
 Koiter Homes
 Port St. Lucie, Florida

DESIGNED	LAH
DRAWN	LAH
APPROVED	DTS
JOB NUMBER	18-1003
DATE	08-19-20
REVISIONS	10-30-20

October 30, 2020 9:49:37 a.m.
 Drawing: 18-1003_PLAT 1_10-29-20.DWG



Cotleur & Hearing

Landscape Architects
Land Planners
Environmental Consultants

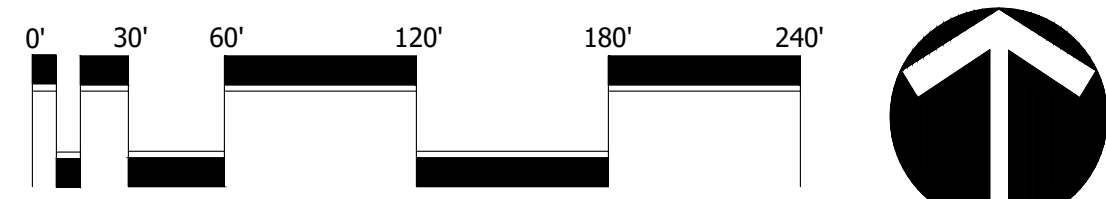
1934 Commerce Lane
Suite 1
Jupiter, Florida 33458
561.747.6336 • Fax 747.1377
www.cotleurhearing.com
Lic# LC-C000239

VERANO SOUTH POD G

Kolter Homes
Port St. Lucie, Florida



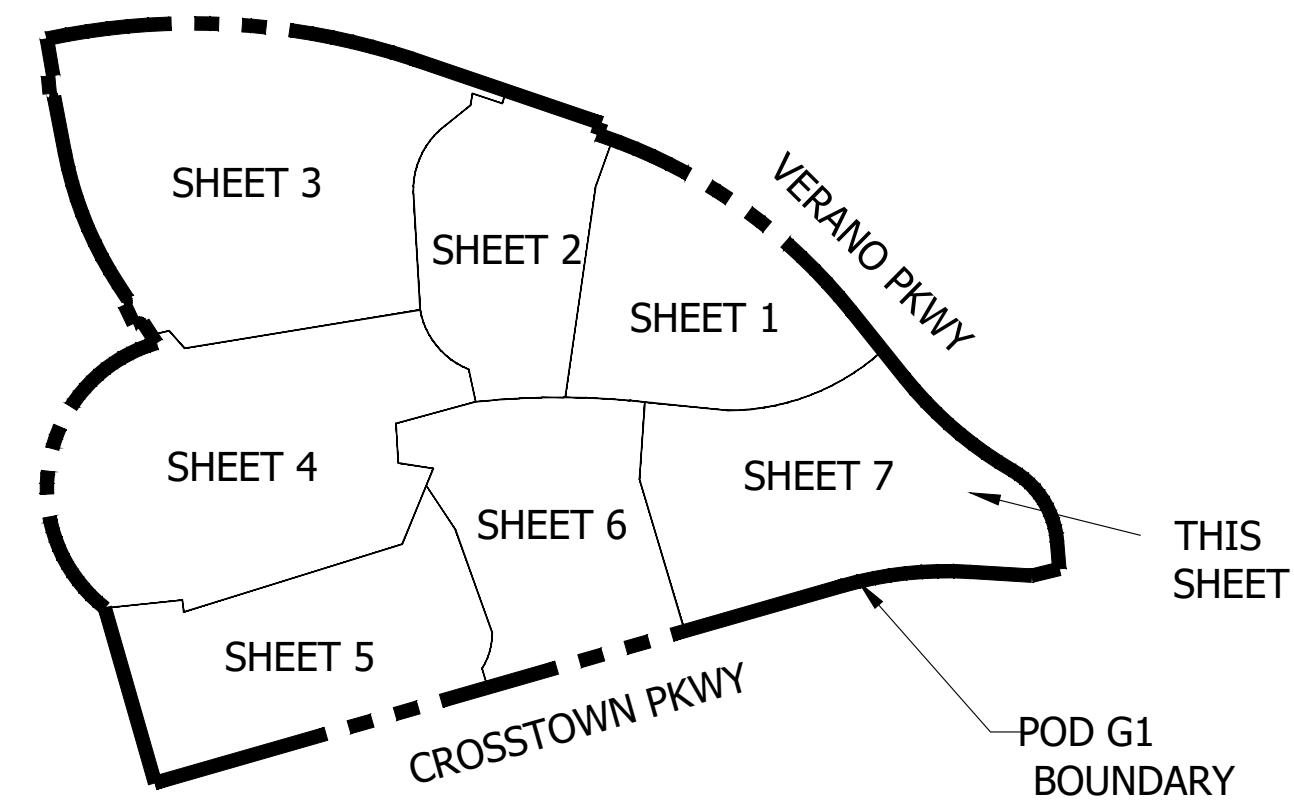
PSLUSD #11-652-36
 PSL PROJ# P20-157
CONCEPTUAL POD G
PLAT 1



Scale: 1" = 60'-0"

North

KEY MAP



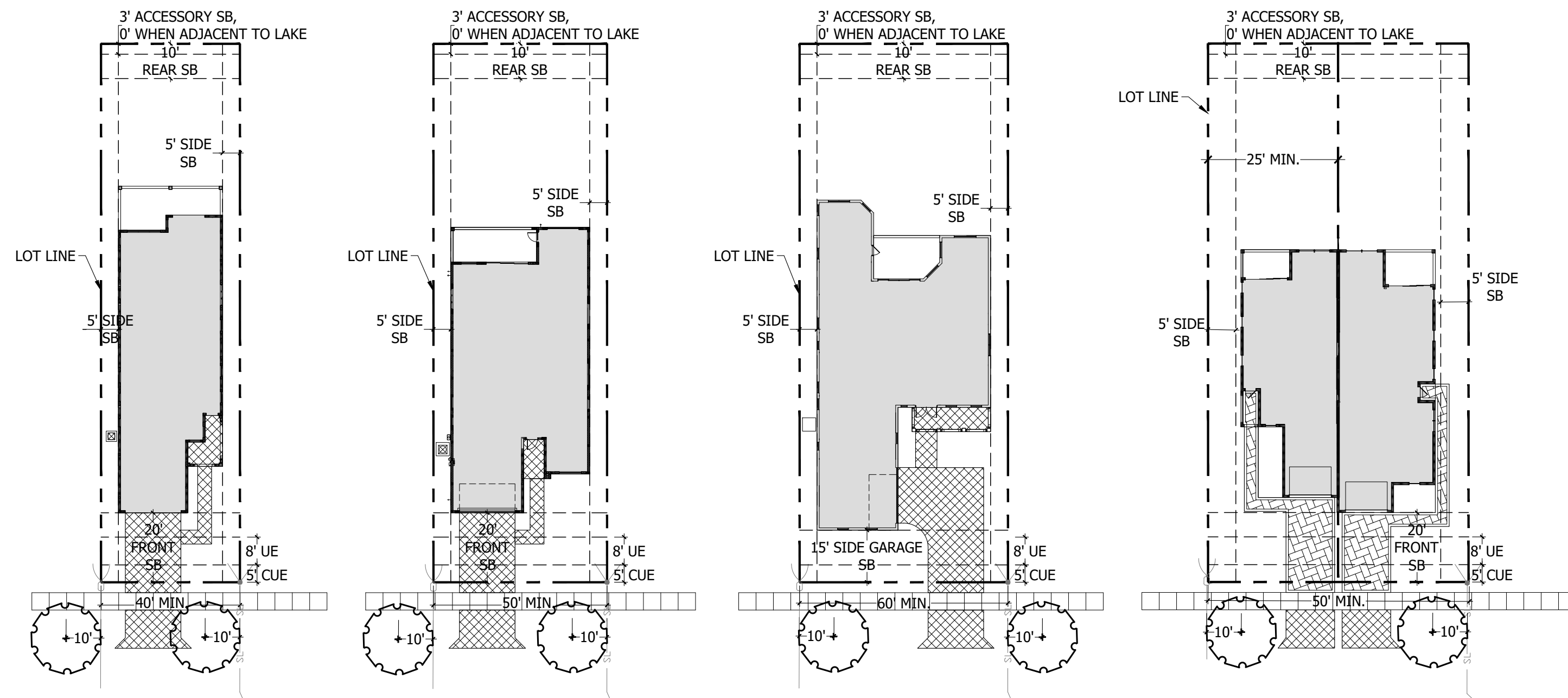
DESIGNED	LAH
DRAWN	LAH
APPROVED	DTS
JOB NUMBER	18-1003
DATE	08-19-20
REVISIONS	10-30-20

October 30, 2020 9:49:37 a.m.
Drawing: 18-1003_PLAT 1_10-29-20.DWG

LANDSCAPE SCHEDULE

TREES	BOTANICAL NAME	COMMON NAME	CONT	CAL	SIZE	NATIVE	QTY	REMARKS
AG	ANNONA GLABRA	POND APPLE	25 gal	2"Cal	8' HT., 3' SPD.	Y	5	FOUR STEM MIN., LIMB UP 2'
CH3	CHAMAEROPS HUMILIS	EUROPEAN FAN PALM	45 GAL	NA	5' O.A., 5' SPRD	Y	1	FULL & THICK CANOPY, SHEARED CONICAL SHAPE, FLORIDA FANCY. SINGLE STRAIGHT TRUNK, 4' CT.
ED	ELAEOCARPUS DECIPENS	JAPANESE BLUEBERRY TREE	30 gal	3"Cal	8' O.A.	Y	168	FULL CANOPY, MULTI TRUNK, LIMB UP 3'
LJ	LIGUSTRUM JAPONICUM	JAPANESE PRIVET	45 GAL	2"Cal	8'-10' HT., 6'-8' SPD.	Y	108	FLORIDA #1, DOUBLE DUG ROOT BALL
QV*	QUERCUS VIRGINIANA	LIVE OAK	100 GAL	3.5" CAL	12' OA	Y	44	FULL CANOPY, SPECIMEN
QV2	QUERCUS VIRGINIANA	LIVE OAK SPECIMEN	200 GAL. OR F.G.	6"-8" CAL.	16'-18' HT., 10'-12' SPD.	Y	62	SINGLE, STRAIGHT TRUNK. FULL CANOPY, SYMMETRICAL. 6' CT MIN.
QV	QUERCUS VIRGINIANA 'CATHEDRAL' ~	CATHEDRAL LIVE OAK	FIELD GROWN	2.5"Cal	12'-14' HT, 6'-8' SPD	Y	1	FULL CANOPY, DOUBLE DUG SPECIMEN, FULL CANOPY, CHARACTER BRANCHING. 8' CT. MIN.
QVS	QUERCUS VIRGINIANA 'SKY CLIMBER'	SKY CLIMBER LIVE OAK	NA	3" CAL	14' HT	Y	700	
QVC	QUERCUS VIRGINIANA ~	CHARACTER LIVE OAK	FIELD GROWN	7"Cal	24' O.A.	Y	105	
PALM TREES	BOTANICAL NAME	COMMON NAME	CONT	CAL	SIZE	NATIVE	QTY	REMARKS
PHS	PHOENIX SYLVESTRIS ~	SYLVESTER DATE PALM	FIELD GROWN	N.A.	10' CT	N	32	STRAIGHT TRUNK, FULL CANOPY, MATCHED, DIAMOND CUT.
SS	SABAL PALMETTO ~	CURVED CABBAGE PALM	N.A.	N.A.	18", 22", 26" O.A. STGG.	Y	238	STRONG, UNIQUE CURVES, SLICK TRUNKS.
SHRUBS	BOTANICAL NAME	COMMON NAME	CONT	SIZE	SPACE	NATIVE	QTY	REMARKS
CLD	CLUSIA GUTTIFERA	SMALL-LEAF CLUSIA	15 GAL	5'-6" O.A	3'-4' O.C.	N	44	FULL & THICK, FLORIDA FANCY
CL3	CLUSIA GUTTIFERA	SMALL-LEAF CLUSIA	7 GAL	3' X 3'	3' O.C.	Y	1,107	FULL & THICK, FF
JS	JUNIPERUS CHINENSIS 'SPARTAN'	SPARTAN JUNIPER	B & B	8'-10' O.A. HT.	AS	N	8	CONICAL, FULL TO BASE, MATCHED
GROUND COVERS	BOTANICAL NAME	COMMON NAME	CONT	SIZE	SPACE	NATIVE	QTY	REMARKS
CI	CHRYSOBALANUS ICACO 'RED TIP'	RED TIPPED COCOPLUM	3 GAL	2' X 2'	2.5' OC	N	3,222	FULL & THICK
CLN	CLUSIA GUTTIFERA 'NANA'	DWARF CLUSIA	3 GAL	2' x 2'	2' OC	N	2,964	FULL & THICK, FLORIDA FANCY
FG	FICUS MACROPHYLLA 'GREEN ISLAND'	GREEN ISLAND FICUS	7 GAL	2' X 2'	2' O.C.	Y	4,636	FULL & THICK, FLORIDA FANCY
HN	HAMELIA PATENS 'NANA'	DWARF FIREBUSH	3 GAL	3' HT. X 2' SPRD	2.5' OC	Y	2,377	FULL & THICK
IVS	ILEX VOMITORIA 'STOKES DWARF'	DWARF YAUPON HOLLY	3 GAL	2' X 2'	2' OC	N	2,396	FULL & THICK
IV	ILEX VOMITORIA 'STOKES DWARF'	DWARF YAUPON HOLLY	5 GAL	1.5' x 1.5'	2' OC	Y	91	FULL & THICK
IX	IKORA 'NORA GRANT'	PINK IKORA	3 gal.	24" X 24"	24" O.C.	N	130	FULL & THICK
JP	JUNIPERUS CHINENSIS 'PARSONII'	PARSONI JUNIPER	3 GAL	1' HT. X 1.5' SPRD.	1.5' OC	N	292	FULL & THICK
PD	PODOCARPUS MACR. 'PRINGLES' OR 'META'	DWARF PODOCARPUS	3 gal.	12" X 18"	24" O.C.	N	3,379	FULL & THICK
RDK	ROSA 'KNOCKOUT'	RED KNOCKOUT ROSE	3 GAL	2' HT., 2' SPD., 2' OC.	2' O.C.	N	3,422	FULL & THICK, UNIFORM GROWTH
SAV	SCHOFFLERA ARBORICOLA 'TRINETTE'	DWARF VARIEGATED SCHEFFLERA	3 GAL	1.5' x 1.5'	2' OC	N	4,913	FULL & THICK
SB	SPARTINA BAKERI	SAND CORD GRASS	3 GAL	2' x 2'	2.5' OC	Y	2,857	FULL & THICK
VS2	VIBURNUM SUSPENSUM	SANDANKWA VIBURNUM	3 GAL	2' X 1.5'	2' OC	N	4,997	FULL & THICK

TYPICAL DRIVEWAY CONFIGURATION



Cotleur & Hearing
 Landscape Architects
 Land Planners
 Environmental Consultants
 1934 Commerce Lane
 Suite 1
 Jupiter, Florida 33458
 561.747.6336 Fax 747.1377
 www.cotleurhearing.com
 Lic# LC-C000239

VERANO SOUTH POD G
 Koiter Homes
 Port St. Lucie, Florida

DESIGNED	LAH
DRAWN	LAH
APPROVED	DTS
JOB NUMBER	18-1003
DATE	08-19-20
REVISIONS	10-30-20

PSLUSD #11-652-36
 PSL PROJ# P20-157
POD G1
LANDSCAPE DETAILS