

Naturally PSL

Land Bank and Community Trust

February 2026



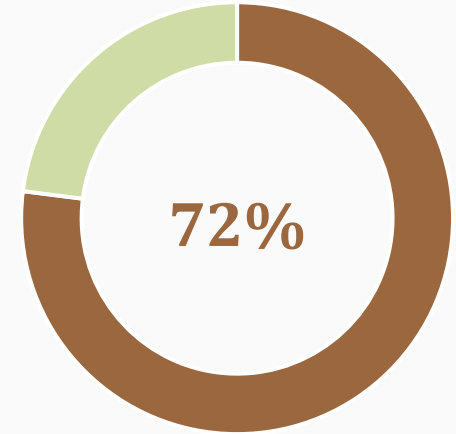
The Context



Residents ranked **Neighborhood Parks/Natural Preserves** as top priorities since 2023

+ 49,108
new residents

have moved to the City of
Port St. Lucie since 2020
(2024 BEBR Estimate)



Out of total developable land
per city land use and zoning,
72% has been developed.

Port St. Lucie is growing faster than its green spaces

Naturally PSL Land Bank

The City's Policy Initiative to *Acquire, Conserve* and *Activate* City Land



Increasing residents access to parks, trails, natural preserves and recreational green spaces and public spaces through **land acquisitions**



Enhancing **resiliency** through stormwater management, education, and green infrastructure.



Improving the quality of **environmental-sensitive lands, wildlife habitats and connectivity.**



Improving the **quality of life** of residents and neighborhoods

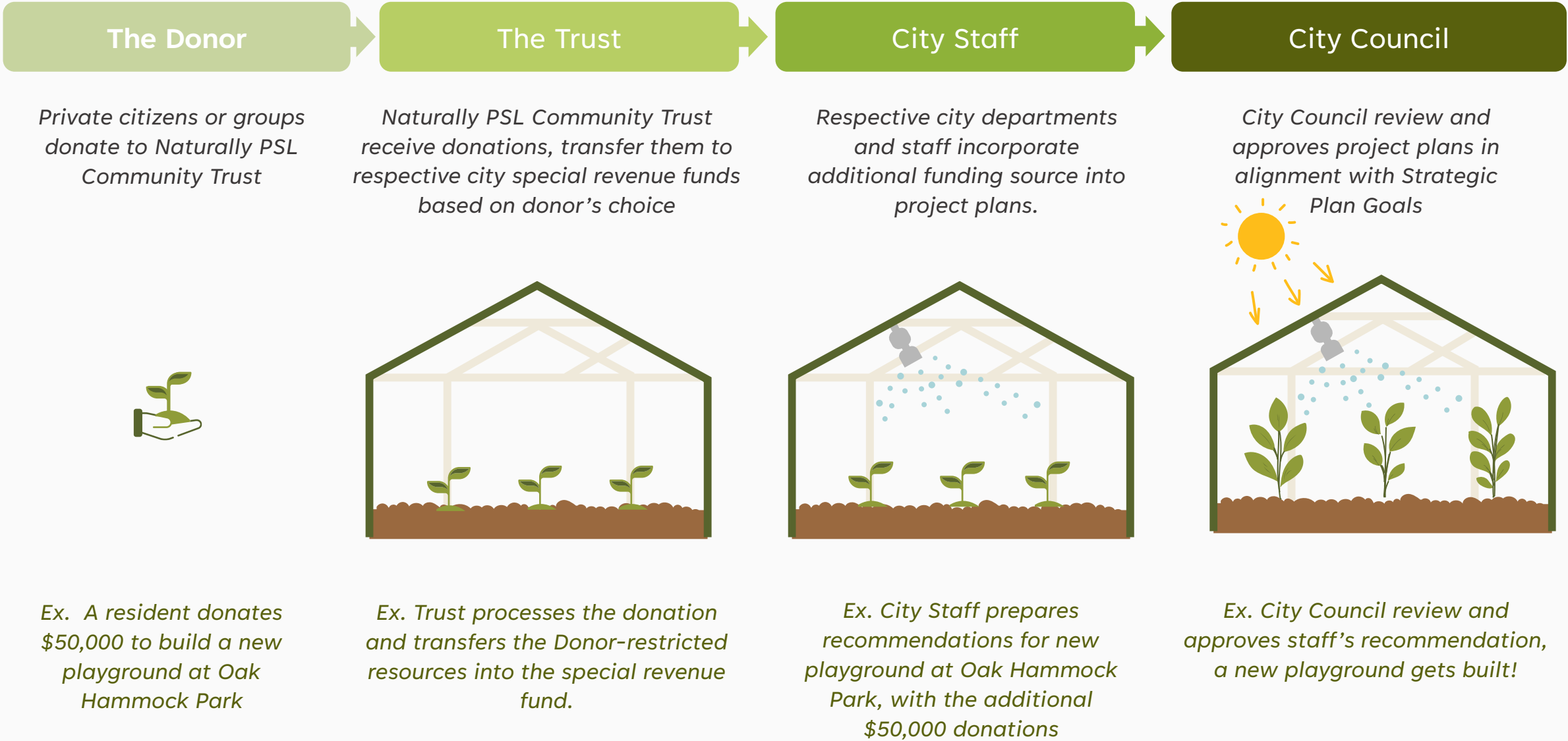
Naturally PSL Community Trust

A Mechanism that Tackles Funding Challenge to Increase Green Spaces in PSL

As a nonprofit 501(c)(3) partner to the City of Port St. Lucie, Naturally PSL Community Trust aims to support Naturally PSL Land Bank to acquire, conserve and activate land for public uses **through fundraising and/or direct monetary or in-kind contributions.**

It serves as a fundraising arm to leverage public and private funding to **acquire properties** and to **maximize public benefits on city land.**

How Does the Trust Support The City?



What Would the Trust Support?



Land Acquisitions (Naturally PSL Land Bank)



“I’d like to help the city to acquire this piece of land across my home, so they stay as a green space”

“I’d like to donate this piece of land I no longer wish to develop for the community to enjoy”

Parks, Trails, and Amenities (Parks and Recreation)



“I’d like to contribute more money to put a new trail around this green space in neighborhood”

“I’d like to expand the City capacity to support more youth actions in environmental stewardship”

Trees (KPSLB and Urban Beautifications)



“I’d like to help plant more trees on the streets in my neighborhood!”

Where Could the Trust Support?

Improve and Optimize use of Existing City Lands

198 Acres
City-owned Natural
Preserves



46
City Parks



1,460 acres
lakes and ponds

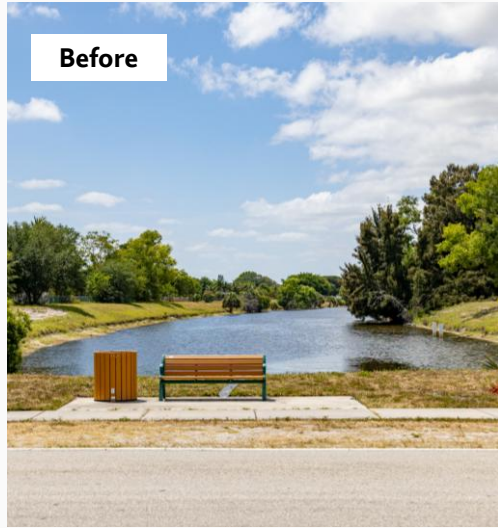


3,097 Acres
McCarty Ranch Preserve,
Recreation and Water
Quality



Where Could the Trust Support?

Turn Green Spaces into *Places* through Community Actions



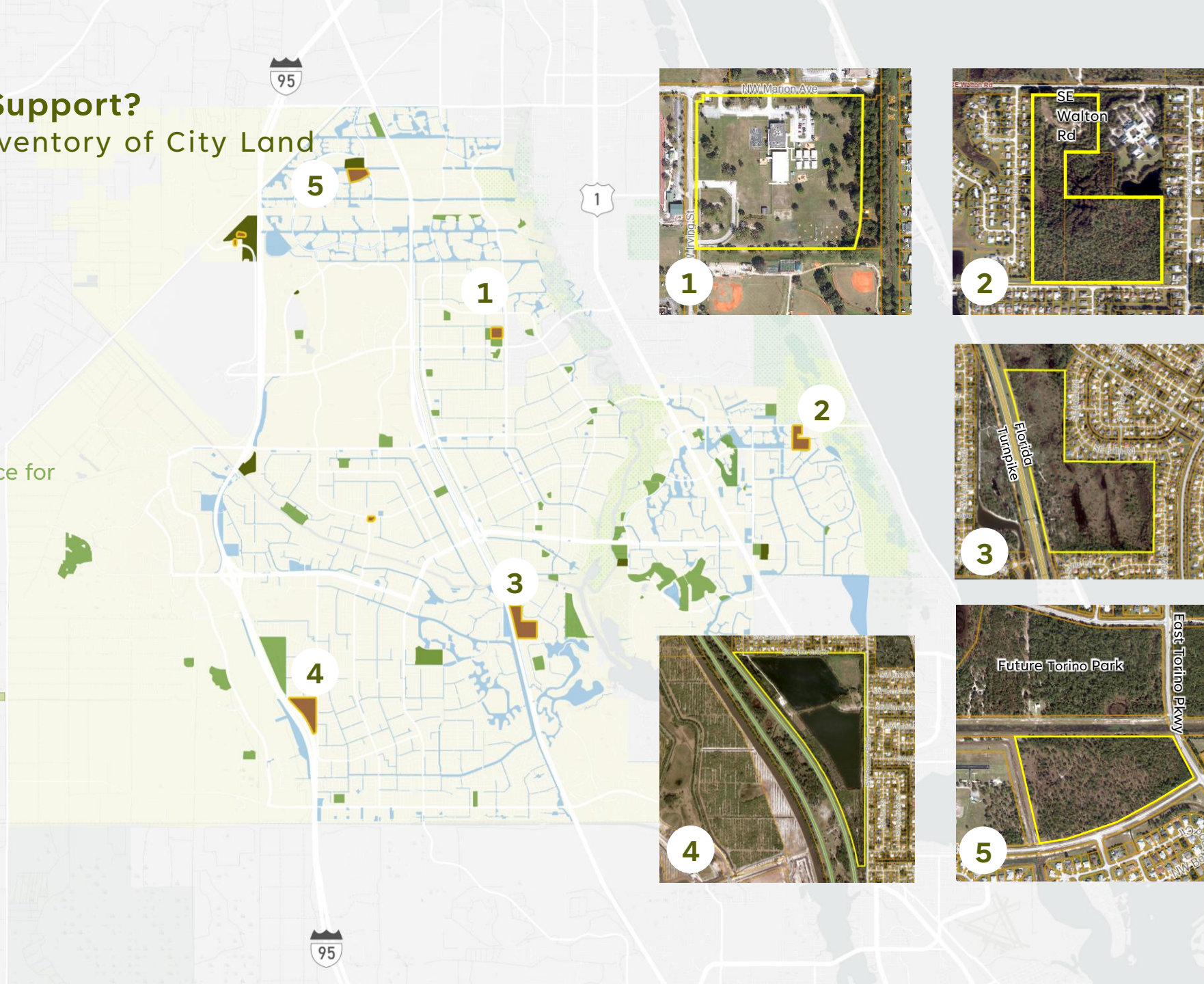
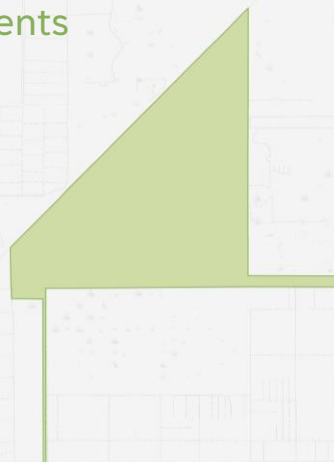
Where Could the Trust Support?

Continue to Expand the Inventory of City Land

~273 acres of
Pending/completed
acquisitions in 2025



~1 acre more future green space for
Every 1000 residents

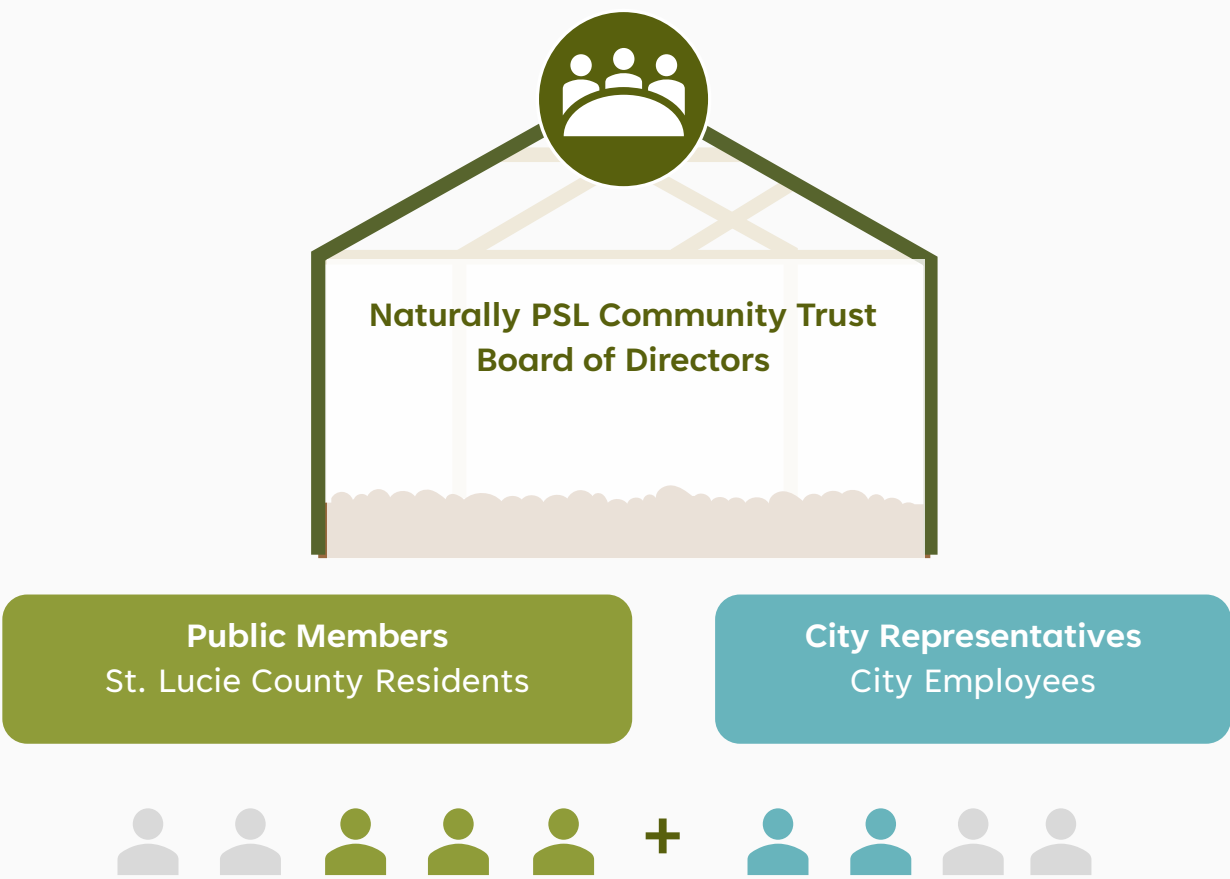


Growing the Trust Together

Board of Directors

The management of the affairs of the corporation shall be vested in its **Board of Directors** and shall function in accordance with the corporation’s **bylaws**.

Directors could solicit contributions and accept contributions on behalf of the corporations.



Total: ≥ 5 Members
With at least 3 being St Lucie County residents not employed by the city

Setting the Priority

For Naturally PSL Community Trust

1 Accelerate Land Acquisitions

- Strategic communications
 - Leverage ribbon cutting events and Naturally PSL brand
- Continue to optimize/innovate



2 Financial Stability

- Remove barriers for public-private partnerships and donations
- Donor database and fundraising strategy
- Land bank policy assurance

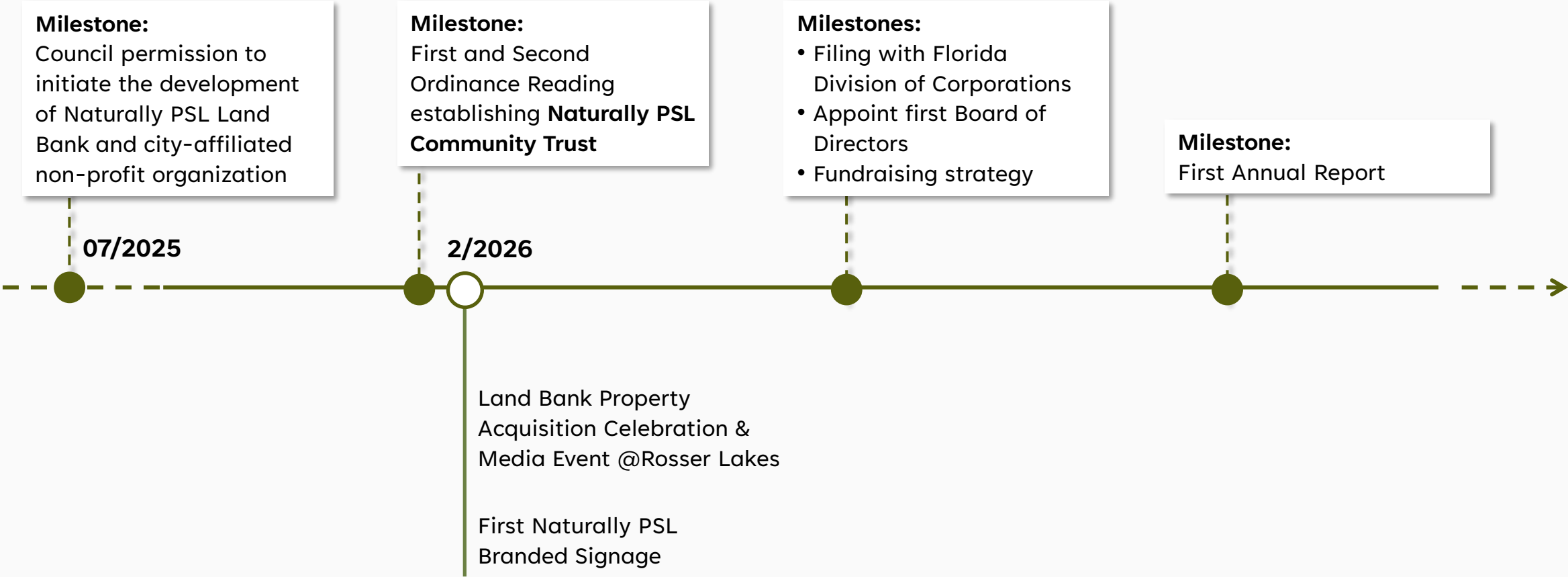
3 Organizational Capacity

- Develop administrative roles for Real Estate Division
- Continue to improve efficiency

4 Performance

- Data-driven strategic goals for 3-year and 5-year
- Annual reporting and quarterly presentations

Next Steps and Milestones



STAFF RECOMMENDATIONS

- Council approval of Ordinance 26-17
- Council permission to move forward with filing for Naturally PSL Community Trust, as a 501(c)(3) non-profit entity to support City Initiative Naturally PSL: Green Spaces and Places through fundraising and/or direct monetary or in-kind contributions.