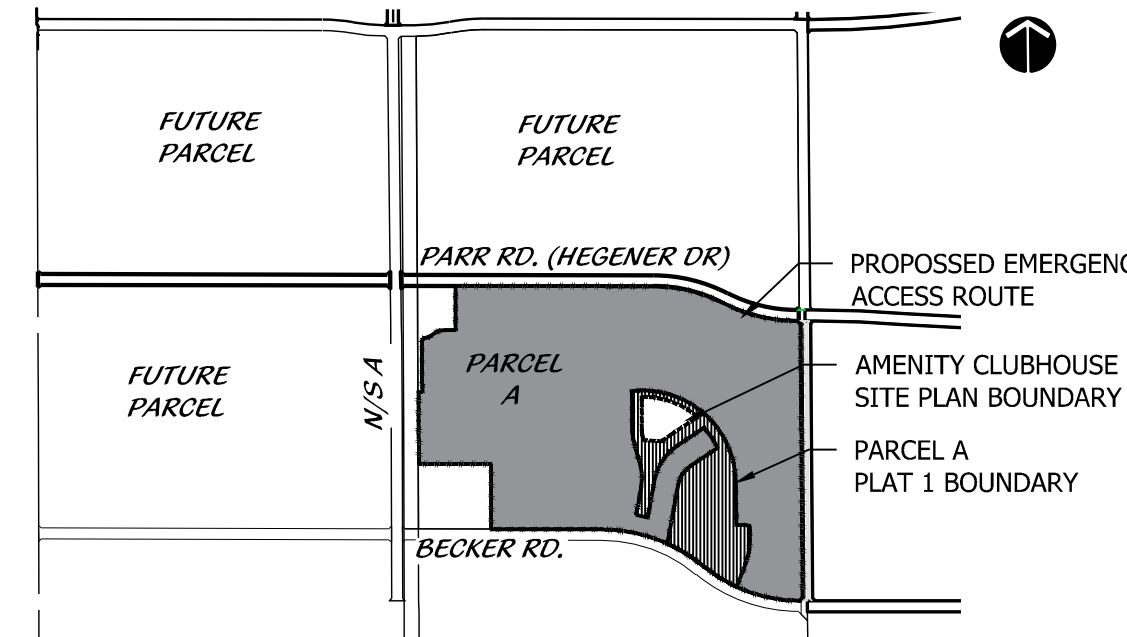


Cotleur & Hearing

Landscape Architects
Land Planners
Environmental Consultants
1934 Commerce Lane
Suite 1
Jupiter, Florida 33458
561.747.6336 · Fax 747.1377
www.cotleurhearing.com
Lic# LC-C000239

MPUD PARCEL A CATALINA PALMS Port St. Lucie, Florida

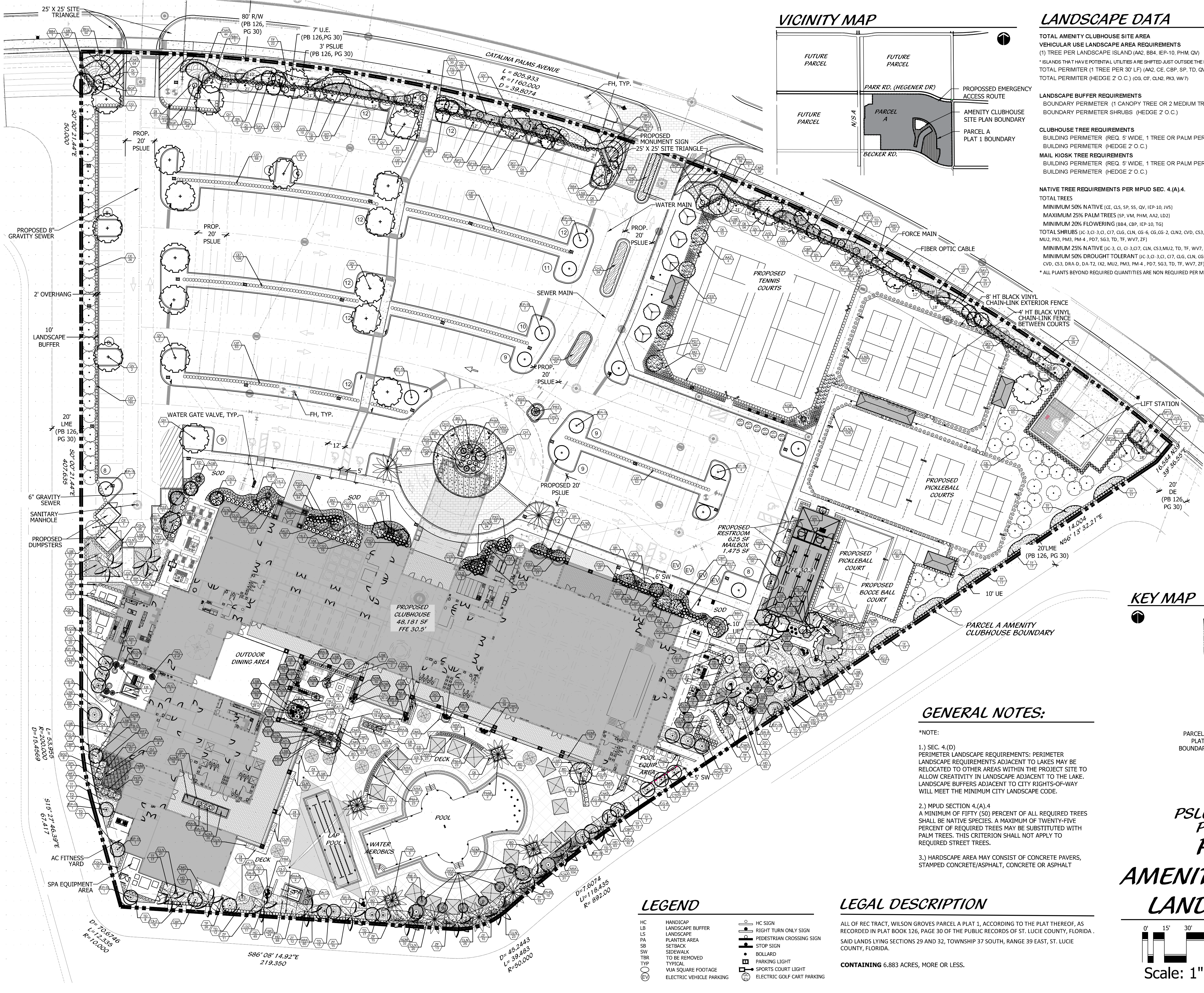
VICINITY MAP



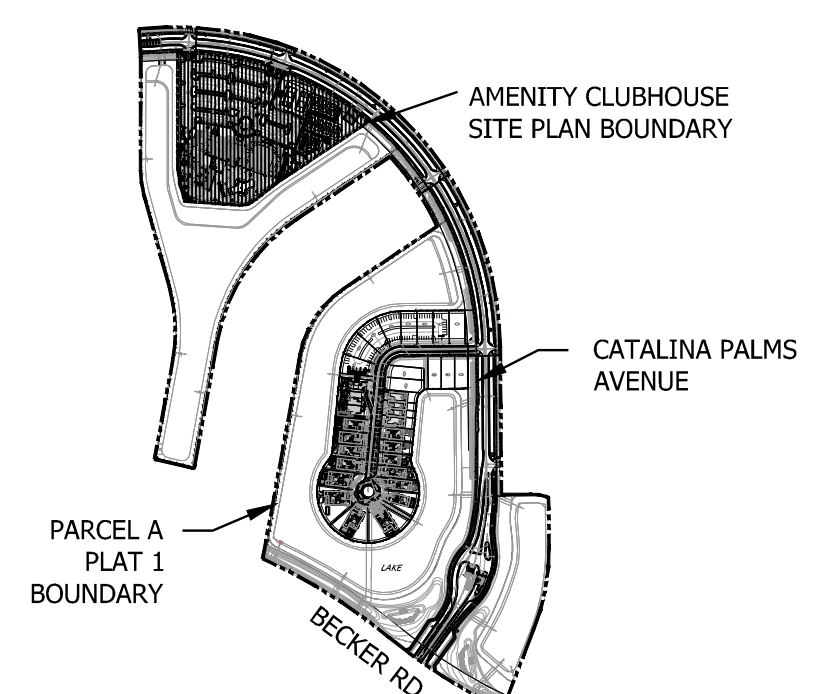
LANDSCAPE DATA

TOTAL AMENITY CLUBHOUSE SITE AREA		299,838.08 S.F. (6.88 ACRES)		
VEHICULAR USE LANDSCAPE AREA REQUIREMENTS	LENGTH	REQUIRED	PROVIDED	
(1) TREE PER LANDSCAPE ISLAND (AA2, BB4, IEP-10, PHM, QV)	32	32		
* ISLANDS THAT HAVE POTENTIAL UTILITIES ARE SHIFTED JUST OUTSIDE THE MEDIAN AREA	969.49	32	32	
TOTAL PERIMETER (1 TREE PER 30' LF) (AA2, CE, CBP, SP, TD, QV)	969.49	485	485	
TOTAL PERIMETER (HEDGE 2' O.C.) (CG3, CF, CLN2, PK3, WW7)				
LANDSCAPE BUFFER REQUIREMENTS		PERIMETER (LF)	REQUIRED	PROVIDED
BOUNDARY PERIMETER (1 CANOPY TREE OR 2 MEDIUM TREES)	2,213.4	74	75	
BOUNDARY PERIMETER SHRUBS (HEDGE 2' O.C.)	2,213.4	1107	1121	
CLUBHOUSE TREE REQUIREMENTS		PERIMETER (LF)	REQUIRED	PROVIDED
BUILDING PERIMETER (REQ. 5' WIDE, 1 TREE OR PALM PER 30')	1,730.9	58	80	
BUILDING PERIMETER (HEDGE 2' O.C.)	1,730.9	865	944	
MAIL KIOSK TREE REQUIREMENTS		PERIMETER (LF)	REQUIRED	PROVIDED
BUILDING PERIMETER (REQ. 5' WIDE, 1 TREE OR PALM PER 30')	206.0	7	7	
BUILDING PERIMETER (HEDGE 2' O.C.)	206.0	103	103	
NATIVE TREE REQUIREMENTS PER MPUD SEC. 4.(A).4.		REQUIRED	PROVIDED	
TOTAL TREES	170	171		
MINIMUM 50% NATIVE (CE, CLS, SP, SS, QV, IEP-10, JVS)	85	85		
MAXIMUM 25% PALM TREES (SP, VM, PHM, AA2, LD3)	43	43		
MINIMUM 20% FLOWERING (BB4, CBP, IEP-10, TG)	34	57		
TOTAL SHRUBS (JC-3, CI-3, CI, CI7, CLG, CLN, CG-6, CG, CG-2, CLN2, CVD, CS3, DRA-D, DA-T2, IX2, MU2, PK3, PM3, PM4, PD7, S63, TD, TF, WW7, ZF)	2560	4494		
MINIMUM 25% NATIVE (JC-3, CI, CI-3, CI7, CLN, CS3, MU2, TD, TF, WW7, ZF)	840	2491		
MINIMUM 50% DROUGHT TOLERANT (JC-3, CI-3, CI, CI7, CLG, CLN, CG-6, CG, CG-2, CLN2, CVD, CS3, DRA-D, DA-T2, IX2, MU2, PM3, PM4, PD7, S63, TD, TF, WW7, ZF)	1280	4379		

* ALL PLANTS BEYOND REQUIRED QUANTITIES ARE NON REQUIRED PER MPUD SEC. 4.(A).4 NOT REPRESENTED IN THIS DATA. SEE GENERAL NOTES, 2.



KEY MAP



GENERAL NOTES:

- *NOTE:
- 1.) SEC. 4.(D) PERIMETER LANDSCAPE REQUIREMENTS: PERIMETER LANDSCAPE REQUIREMENTS ADJACENT TO LAKES MAY BE RELOCATED TO OTHER AREAS WITHIN THE PROJECT SITE TO ALLOW CREATIVITY IN LANDSCAPE ADJACENT TO THE LAKE. LANDSCAPE BUFFERS ADJACENT TO CITY RIGHTS-OF-WAY WILL MEET THE MINIMUM CITY LANDSCAPE CODE.
 - 2.) MPUD SECTION 4.(A).4 A MINIMUM OF FIFTY (50) PERCENT OF ALL REQUIRED TREES SHALL BE NATIVE SPECIES. A MAXIMUM OF TWENTY-FIVE PERCENT OF REQUIRED TREES MAY BE SUBSTITUTED WITH PALM TREES. THIS CRITERION SHALL NOT APPLY TO REQUIRED STREET TREES.
 - 3.) HARDSCAPE AREA MAY CONSIST OF CONCRETE PAVERS, STAMPED CONCRETE/ASPHALT, CONCRETE OR ASPHALT

LEGEND

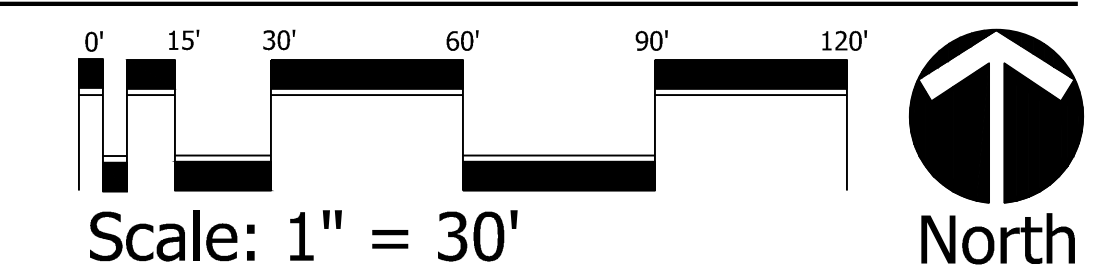
HC	HANDICAP	HC SIGN
LB	LANDSCAPE BUFFER	RIGHT TURN ONLY SIGN
LS	LANDSCAPE	PEDESTRIAN CROSSING SIGN
PA	PLANTER AREA	STOP SIGN
SB	SETBACK	BOLLARD
SW	SIDEWALK TO BE REMOVED	PARKING LIGHT
TBR	TYPICAL	SPORTS COURT LIGHT
TYP	TYPICAL	ELECTRIC GOLF CART PARKING
EV	VIA SQUARE FOOTAGE	
	ELECTRIC VEHICLE PARKING	

LEGAL DESCRIPTION

ALL OF REC TRACT, WILSON GROVES PARCEL A PLAT 1, ACCORDING TO THE PLAT THEREOF, AS RECORDED IN PLAT BOOK 126, PAGE 30 OF THE PUBLIC RECORDS OF ST. LUCIE COUNTY, FLORIDA. SAID LANDS LYING SECTIONS 29 AND 32, TOWNSHIP 37 SOUTH, RANGE 39 EAST, ST. LUCIE COUNTY, FLORIDA.

CONTAINING 6.883 ACRES, MORE OR LESS.

PSLUSD # 11-681-A6 PSL# P25-149 PARCEL A AMENITY CLUBHOUSE LANDSCAPE PLAN



DESIGNED	PRP
DRAWN	PRP/VEJ
APPROVED	LAH
JOB NUMBER	20-0518
DATE	04-06-26
REVISIONS	



LANDSCAPE SPECIFICATIONS

CODE	QTY	BOTANICAL NAME	COMMON NAME	CONTAINER	CALIPER	SIZE	CROWN SPREAD	NATIVE	REMARKS
TREES									
BBI	3	BAUHINIA X BLAKEANA	HONG KONG ORCHID TREE	B & B	2.5" CAL	12' - 14' HT	3'-5' SPRD	N	FULL CANOPY
CE	52	CONOCARPUS ERECTUS	GREEN BUTTWOOD	45 GAL, MIN	2.5" CAL	12' - 14' HT.	3'-5' SPRD	Y	FULL CANOPY, FL #1
CES*	5	CONOCARPUS ERECTUS 'SERICEUS'	SILVER BUTTWOOD	65 GAL	2.5" CAL	12' HT	3'-5' SPRD	Y	FULL CANOPY, STANDARD, SINGLE TRUNK
QV	5	QUERCUS VIRGINIANA	SOUTHERN LIVE OAK	65 GAL OR FG	2.5" CAL	12' - 14' OA	3'-5' SPRD	Y	FLORIDA #1, DOUBLE DUG ROOT BALL
MEDIUM TREES									
CBP	14	CALLIANDRA BREVIPES	PINK POWDERPUFF	25 GAL	2" CAL.	5' - 6' O.A. HT.		N	FULL CANOPY
JVS	4	JUNIPERUS VIRGINIANA SILVICOLA	SOUTHERN RED CEDAR	45 GAL	1" - 1.5"	6' - 8' HT		Y	FULL CANOPY TO BASE, MULTI TRUNK
SHRUBS									
JC-3	162	CAPPARIA CYNOPHALLOPHORA	JAMAICAN CAPER	7 GAL	3" - 4"	2' - 3'		Y	FULL DENSE FOLIAGE TO BASE,
CI-3	73	CHRYSOBALANUS ICACO	GREEN COCOPLUM	CONTAINERIZED	2"	24"		Y	FULL DENSE FOLIAGE TO BASE
CI7	200	CHRYSOBALANUS ICACO 'RED TIP'	RED TIP COCOPLUM	7 GAL	3" X 2"	2.5' O.C.		Y	FULL & THICK
CG-6	3	CLUSIA GUTTIFERA	SMALL LEAF CLUSIA	15 GAL	6"	36"		N	FULL, DENSE FOLIAGE TO BASE
CG	269	CLUSIA GUTTIFERA	SMALL LEAF CLUSIA	7 GAL	2" X 2"	2" O.C.		N	FULL & THICK
GROUND COVERS									
CLN	15	CLUSIA ROSEA 'NANA'	DWARF CLUSIA	3 GAL	1.5" X 1.5"	2" OC		Y	FULL & THICK
ISK	13	IDORA 'SUPER KING'	SUPER KING IDORA	CONTAINERIZED	2" - 3"	2' - 3'		N	FULL & THICK
TD	188	TRIPSACIUM DACTYLOIDES	STANDARD FAKAHATCHEE GRASS	3 GAL	2" X 2"	2.5' OC		Y	FULL & THICK

LANDSCAPE DATA

LANDSCAPE BUFFER REQUIREMENTS	PERIMETER (LF)	REQUIRED	PROVIDED
BOUNDARY PERIMETER (1 CANOPY TREE OR 2 MEDIUM TREES)	2,213.4	74	75
BOUNDARY PERIMETER SHRUBS (HEDGE 2' O.C.)	2,213.4	1107	1121

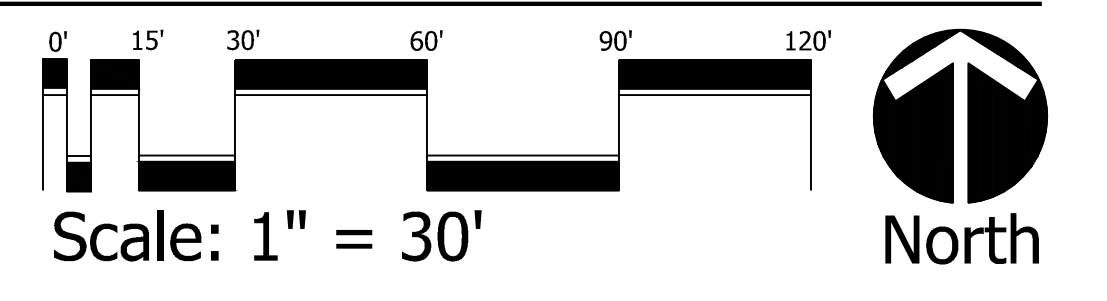
GENERAL NOTES:

- *NOTE:
- 1.) SEC. 4.(D) PERIMETER LANDSCAPE REQUIREMENTS: PERIMETER LANDSCAPE REQUIREMENTS ADJACENT TO LAKES MAY BE RELOCATED TO OTHER AREAS WITHIN THE PROJECT SITE TO ALLOW CREATIVITY IN LANDSCAPE ADJACENT TO THE LAKE. LANDSCAPE BUFFERS ADJACENT TO CITY RIGHTS-OF-WAY WILL MEET THE MINIMUM CITY LANDSCAPE CODE.
- 2.) MPUD SECTION 4.(A).4 A MINIMUM OF FIFTY (50) PERCENT OF ALL REQUIRED TREES SHALL BE NATIVE SPECIES. A MAXIMUM OF TWENTY-FIVE PERCENT OF REQUIRED TREES MAY BE SUBSTITUTED WITH PALM TREES. THIS CRITERION SHALL NOT APPLY TO REQUIRED STREET TREES.
- 3.) HARDSCAPE AREA MAY CONSIST OF CONCRETE PAVERS, STAMPED CONCRETE/ASPHALT, CONCRETE OR ASPHALT

LEGEND

HC	HANDICAP	HC SIGN
LB	LANDSCAPE BUFFER	RIGHT TURN ONLY SIGN
LS	LANDSCAPE	PEDESTRIAN CROSSING SIGN
PA	PLANTER AREA	STOP SIGN
SB	SETBACK	BOLLARD
SW	SIDEWALK	PARKING LIGHT
TBR	TO BE REMOVED	SPORTS COURT LIGHT
TYP	TYPICAL	ELECTRIC GOLF CART PARKING
VIA	SQUARE FOOTAGE	
(E)	ELECTRIC VEHICLE PARKING	

PSLUSD # 11-681-A6
 PSL# P25-149
PARCEL A
AMENITY CLUBHOUSE
 LANDSCAPE BUFFER EXHIBIT



Cotleur & Hearing
 Landscape Architects
 Land Planners
 Environmental Consultants
 1934 Commerce Lane
 Suite 1
 Jupiter, Florida 33458
 561.747.6336 · Fax 747.1377
 www.cotleurhearing.com
 Lic# LC-C000239

MPUD PARCEL A
CATALINA PALMS
 Port St. Lucie, Florida

DESIGNED	PRP
DRAWN	PRP/VEJ
APPROVED	LAH
JOB NUMBER	20-0518
DATE	04-08-26
REVISIONS	

LANDSCAPE DATA

CLUBHOUSE TREE REQUIREMENTS		PERIMETER (LF)	REQUIRED	PROVIDED
BUILDING PERIMETER (REQ. 5' WIDE, 1 TREE OR PALM PER 30')		1,730.9	58	80
BUILDING PERIMETER (HEDGE 2' O.C.)		1,730.9	865	944
MAIL KIOSK TREE REQUIREMENTS		PERIMETER (LF)	REQUIRED	PROVIDED
BUILDING PERIMETER (REQ. 5' WIDE, 1 TREE OR PALM PER 30')		208.0	7	7
BUILDING PERIMETER (HEDGE 2' O.C.)		208.0	103	103

MAIL KIOSK LANDSCAPE SPECIFICATIONS

CODE	QTY	BOTANICAL NAME	COMMON NAME	CONTAINER	CALIPER	SIZE	CROWN SPREAD	NATIVE	REMARKS
TREES									
CLS	3	CLUSIA ROSEA	SMALL-LEAF CLUSIA	65 GAL	2.5" CAL	12" HT.	5' SPRD	Y	SINGLE TRUNK, STANDARD
MEDIUM TREES									
CBP	1	CALLIANDRA BREVIPES	PINK POWDERPUFF	25 GAL	2" CAL	5'-6" O.A. HT.		N	FULL CANOPY
TG	3	TIBOUCHINA GRANULOSA	PURPLE GLORY TREE	45 GAL.	1.5" CAL.	5'-6" O.A. HT.		N	STANDARD, FL #1
PALM TREES									
AM2	2	ADONIDIA MERRILLI DOUBLE	DOUBLE CHRISTMAS PALM	FIELD GROWN	NA	8' C.T.		N	FL #1, 2 TRUNK
SHRUBS									
C17	53	CHRYSOBALANUS ICACO 'RED TIP	RED TIP COCOPLUM	7 GAL	3' X 2'	2.5' O.C.		Y	FULL & THICK
SG3	50	SCHEFFELERA ARBORICOLA 'GOLD CAPELLA'	GOLD CAPELLA SCHEFFELERA	3 GAL	2' X 2'	2' OC		N	FULL & THICK
ACCENTS									
SN	1	STRELITZIA NICOLAI	WHITE BIRD OF PARADISE	25 GAL	7' - 8'	5'		N	FULL, DENSE, MULTI STEMS

CLUBHOUSE LANDSCAPE SPECIFICATIONS

CODE	QTY	BOTANICAL NAME	COMMON NAME	CONTAINER	CALIPER	SIZE	NATIVE	REMARKS
TREES								
BB4	2	BAUHINIA X BLAKEANA	HONG KONG ORCHID TREE	B & B	2.5" CAL	12' - 14' HT	N	FULL CANOPY
CLS	3	CLUSIA ROSEA	SMALL-LEAF CLUSIA	65 GAL	2.5" CAL	12" HT. X 5' SPD	Y	SINGLE TRUNK, STANDARD
ED	3	ELEAOCARPUS DECIPENS	JAPANESE BLUEBERRY TREE	45 GAL	2.5" CAL	12'-14' HT	N	STANDARD, FULL, DENSE, SYMMETRICAL FOLIAGE, FULL SYMMETRICAL CANOPY, STRAIGHT TRUNK, FULL TO BASE
IEP-10	21	ILEX X ATTENATA 'EAGLESTON HOLLY'	EAGLESTON HOLLY	CONTAINERIZED	2.5" CAL	12' - 14' HT	Y	
MEDIUM TREES								
CBP	10	CALLIANDRA BREVIPES	PINK POWDERPUFF	25 GAL	2" CAL.	5'-6" O.A. HT.	N	FULL CANOPY
TG	4	TIBOUCHINA GRANULOSA	PURPLE GLORY TREE	45 GAL.	1.5" CAL	5'-6" O.A. HT	N	STANDARD, FL #1
PALM TREES								
AM2	1	ADONIDIA MERRILLI DOUBLE	DOUBLE CHRISTMAS PALM	FIELD GROWN	NA	8' C.T.	N	FL #1, 2 TRUNK
LD2	15	LIVISTONA DECIPENS	RIBBON PALM	B & B	N/A	10'-12' C.T.	N	MATCHED
PHM	7	PHOENIX DACTYLIFERA 'MEDJOL'	MEDJOL DATE PALM	FIELD GROWN	NA	12' C.T.	N	FULL, MATCHED, SYMMETRICAL, DIAMOND CUT TRUNK, FLORIDA FANCY
PR4	6	PHOENIX ROBELINII	PYGMY DATE PALM	FIELD GROWN	NA	8' C.T.	N	SINGLE TRUNK, FULL CANOPY
RE-5	6	RHAPIS EXCELSA	LADY PALM	25 GAL	NA	7'-8' C.T.	Y	FULL & THICK, FLORIDA FANCY
SL	2	SATAKENTIA LILIUENSIS	SATAKENTIA PALM	B & B	N/A.	10' C.T	N	HEAVY CALIPER, FULL, UNDAMAGED HEAD, MATCHING HEAD HEIGHTS, FULL AND THICK, FLORIDA FANCY
VM	7	VIETCHIA MONTGOMERYANA	MONTGOMERY PALM	FIELD GROWN	NA	8' GW	N	
SHRUBS								
BG2	8	BAMBUSA TEXTILIS 'GRACILIS'	SLENDER WEAVER'S BAMBOO	15 GAL	12'-15' HT	AS	N	FULL AND THICK
JC-3	51	CAPPARIA CYNOPHALLOPHORA	JAMAICAN CAPER	7 GAL	3'-4"	2'-3"	Y	FULL DENSE FOLIAGE TO BASE,
CLG	31	CLUSIA GUTTIFERA	CLUSIA	15 GAL	6' X 3'	3' OC	N	FULL & THICK
CG-6	17	CLUSIA GUTTIFERA	SMALL LEAF CLUSIA	15 GAL	6"	36"	N	FULL, DENSE FOLIAGE TO BASE
CG-2	10	CLUSIA GUTTIFERA	SMALL LEAF CLUSIA	CONTAINERIZED	2"	2' SPR. 2' O.C.	N	FULL, DENSE FOLIAGE TO BASE
CLN2	339	CLUSIA GUTTIFERA 'NANA'	DWARF CLUSIA	3 GAL	2' X 2'	2' OC	N	FULL & THICK, FLORIDA FANCY
CVD	23	CODIAEUM VARIEGATUM 'DREADLOCKS'	DREADLOCKS CROTON	7 GAL.	3' X 2'	A.S.	N	FULL & THICK
CS3	49	CONOCARPUS ERECTUS SERICEUS	SILVER BUTTWOOD	7 GAL	3' X 3'	3' OC	Y	FLORIDA FANCY, FULL & THICK
IX2	34	IXORA 'NORA GRANT'	PINK IXORA	7 GAL	3' X 3'	3' OC	N	FULL & THICK
MU2	32	MUHLENBERGIA CAPILLARIS	PINK MUHLY GRASS	3 GAL	18" X 18"	2.5' OC	Y	FULL & THICK
PX3	115	PHILODENDRON XANADU	XANADU PHILODENDRON	3 GAL	2' X 2'	AS	N	THICK AND FULL
PM3	9	PODOCARPUS 'MAKI'	PODOCARPUS	3 GAL.	3' X 2'	2' OC	N	FULL & THICK.
SG3	65	SCHEFFELERA ARBORICOLA 'GOLD CAPELLA'	GOLD CAPELLA SCHEFFELERA	3 GAL	2' X 2'	2' OC	N	FULL & THICK
VW7	21	VIBURNUM OBOVATUM 'WALTERS'	WALTER'S VIBURNUM	7 GAL	3' X 3'	3' OC	Y	FULL & THICK



GENERAL NOTES:

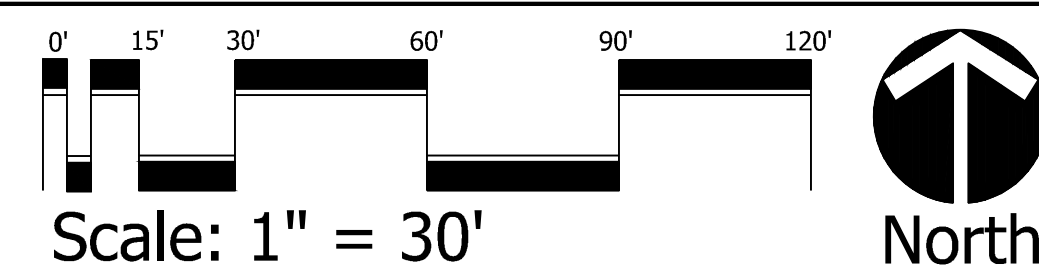
- *NOTE:
 1.) PSL SEC. 154.04(C).4
 NO MORE THAN TWENTY-FIVE (25) PERCENT OF REQUIRED TREES SHALL BE PALM TREES. THE BUILDING FAÇADE LANDSCAPE STRIP IS EXEMPT FROM THIS REQUIREMENT.
 2.) HARDSCAPE AREA MAY CONSIST OF CONCRETE PAVERS, STAMPED CONCRETE/ASPHALT, CONCRETE OR ASPHALT

PSLUSD # 11-681-A6
 PSL# P25-149

**PARCEL A
 AMENITY CLUBHOUSE
 BUILDING FAÇADE LANDSCAPE EXHIBIT**

LEGEND

HC	HANDICAP	HC SIGN
LB	LANDSCAPE BUFFER	RIGHT TURN ONLY SIGN
LS	LANDSCAPE	PEDESTRIAN CROSSING SIGN
PA	PLANTER AREA	STOP SIGN
SB	SETBACK	BOLLARD
SW	SIDEWALK	PARKING LIGHT
TBR	TO BE REMOVED	SPORTS COURT LIGHT
TYP	TYPICAL	ELECTRIC GOLF CART PARKING
CSQ	CURB SQUARE FOOTAGE	
(E)	ELECTRIC VEHICLE PARKING	



Cotleur & Hearing
 Landscape Architects
 Land Planners
 Environmental Consultants
 1934 Commerce Lane
 Suite 1
 Jupiter, Florida 33458
 561.747.6336 · Fax 747.1377
 www.cotleurhearing.com
 Lic# LC-C000239

**MPUD PARCEL A
 CATALINA PALMS
 Port St. Lucie, Florida**

DESIGNED	PRP
DRAWN	PRP/VEJ
APPROVED	LAH
JOB NUMBER	20-0518
DATE	04-06-26
REVISIONS	

LANDSCAPE NOTES

1. GENERAL LANDSCAPE REQUIREMENTS

LANDSCAPE CONTRACT WORK INCLUDES, BUT IS NOT LIMITED TO, SOIL PREPARATION, FINE OR FINISH GRADING, FURNISHING AND INSTALLING PLANT MATERIAL, WATERING, STAKING, GUYING AND MULCHING.

PLANT SIZE AND QUALITY

TREES, PALMS, SHRUBS, GROUNDCOVERS:
 PLANT SPECIES AND SIZES SHALL CONFORM TO THOSE INDICATED ON THE DRAWINGS. NOMENCLATURE SHALL CONFORM TO STANDARD PLANT NAMES, 1942 EDITION. ALL NURSERY STOCK SHALL BE IN ACCORDANCE WITH GRASSES AND STANDARDS FOR NURSERY PLANTS PARTS 1 & II, LATEST EDITION PUBLISHED BY THE FLORIDA DEPARTMENT OF AGRICULTURE AND CONSUMER SERVICES, UNLESS SPECIFIED OTHERWISE. ALL PLANTS SHALL BE FLORIDA GRADE NUMBER 1 OR BETTER AS DETERMINED BY THE FLORIDA DIVISION OF PLANT INDUSTRY. TIGHTLY KNIT PLANT, SO TRAINED OR FAYORED IN ITS DEVELOPMENT THAT FIRST APPEARANCE IS UNQUESTIONABLE AND IT IS OUTSTANDINGLY SUPERIOR IN FORM, NUMBER OF BRANCHES, COMPACTNESS AND SYMMETRY. ALL PLANTS SHALL BE FRESHLY DUG, SOUND, HEALTHY, VIGOROUS, WELL BRANCHED AND FREE OF DISEASE AND INSECT EGGS AND LARVAE AND SHALL HAVE ADEQUATE ROOT SYSTEMS. TREES AND PALMS FOR PLANTING ROWS SHALL BE UNIFORM IN SIZE AND SHAPE. ALL MATERIALS SHALL BE SUBJECT TO APPROVAL BY THE LANDSCAPE ARCHITECT. THE PLANTS FURNISHED SHALL BE NORMAL FOR THE VARIETY AND FLORIDA NUMBER 1. PLANTS SHALL BE PRUNED PRIOR TO DELIVERY ONLY ON THE APPROVAL OF THE LANDSCAPE ARCHITECT.

ALL CONTAINER GROWN MATERIAL SHALL BE HEALTHY, VIGOROUS, WELL-ROOTED PLANTS AND ESTABLISHED IN THE CONTAINER IN WHICH THEY ARE SOLD. THE PLANTS SHALL HAVE TOPS OF GOOD QUALITY AND BE IN A HEALTHY GROWING CONDITION.

AN ESTABLISHED CONTAINER GROWN PLANT SHALL BE TRANSPLANTED INTO A CONTAINER AND GROWN IN THAT CONTAINER SUFFICIENTLY LONG ENOUGH FOR THE NEW FIBROUS ROOTS TO HAVE DEVELOPED SO THAT THE ROOT MASS WILL RETAIN ITS SHAPE AND HOLD TOGETHER WHEN REMOVED FROM THE CONTAINER.

MULCH SHALL BE SHREDDED CYPRESS MULCH. ALL MULCH IS TO BE APPLIED TO A DEPTH OF 3" EXCEPT FOR THOSE SPECIFIC SITUATIONS SHOWN BELOW IN SECTIONS 2.3 & 4

FERTILIZER BACKFILL MIXTURE FOR ALL PLANTS SHALL CONSIST OF MLIORGANITE ACTIVATED SLUDGE MIXED WITH THE BACKFILL AT A RATE OF NOT LESS THAN 50 LBS. PER CUBIC YARD.

FERTILIZER FOR TREES AND SHRUBS MAY BE TABLET FORM OR GRANULAR. GRANULAR FERTILIZER SHALL BE UNIFORM IN COMPOSITION, DRY AND FREE-FLOWING. THIS FERTILIZER SHALL BE DELIVERED TO THE SITE IN THE ORIGINAL UNOPENED BAGS, EACH BEARING THE MANUFACTURER'S STATEMENT OF ANALYSIS, AND SHALL MEET THE FOLLOWING REQUIREMENTS: 16% NITROGEN, 7% PHOSPHORUS, 12% POTASSIUM. PLUS ION-TABLET FERTILIZER (AGRIFORM OR EQUAL) IN 21 GRAM SIZE SHALL MEET THE FOLLOWING REQUIREMENTS: 20% NITROGEN, 10% PHOSPHORUS AND 5% POTASSIUM.

FERTILIZER WILL BE APPLIED AT THE FOLLOWING RATES:

PLANT SIZE	16-7-12	AGRIFORM TABLETS* (21 GRAM)
1 GAL.	1/4 LB.	1
3 GAL.	1/3 LB.	3
7 1/2 GAL.	1/2 LB.	5
1"-6" CALIPER	2 LBS./1" CALIPER	2 PER 1" CALIPER
6" AND LARGER	1 LBS./1" CALIPER	2 PER 1" CALIPER
(*) TABLETS TO BE INSTALLED IN TOP		

FLORIDA EAST COAST PALM SPECIAL SHALL BE APPLIED TO ALL PALMS AT INSTALLATION AT A RATE OF .5 LB. PER INCH OF TRUNK UNLESS OTHERWISE SPECIFIED.

FIELD GROWN TREES AND PALMS PREVIOUSLY ROOT PRUNED SHALL OBTAIN A ROOT BALL WITH SUFFICIENT ROOTS FOR CONTINUED GROWTH WITHOUT RESULTING SHOCK.

CONTRACTOR SHALL NOT MARK OR SCAR TRUNK IN ANY FASHION.

PLANTS SHALL BE WATERED AS NECESSARY OR WITHIN 24 HOURS AFTER NOTIFICATION BY THE LANDSCAPE ARCHITECT.

THE LOCATIONS OF PLANTS, AS SHOWN IN THESE PLANS, ARE APPROXIMATE. THE FINAL LOCATIONS MAY BE ADJUSTED TO ACCOMMODATE UNPRESHEN FIELD CONDITIONS. MAJOR ADJUSTMENTS TO THE LAYOUT ARE TO BE APPROVED BY THE LANDSCAPE ARCHITECT.

ALL PLASTIC FABRIC SHALL BE REMOVED FROM PLANT MATERIAL AT TIME OF INSTALLATION.

ALL TREES MUST BE STAKED AS SHOWN ON THE PLANTING DETAILS WITHIN 24 HOURS OF PLANTING. STAKES TO REMAIN FOR A MINIMUM OF 9 MONTHS, BUT NO LONGER THAN 18 MONTHS. CONTRACTOR IS RESPONSIBLE FOR MAINTENANCE AND REMOVAL OF THE STAKES.

ALL TREES MUST BE PRUNED AS PER LANDSCAPE ARCHITECT'S DIRECTION. SABAL PALMS MAY BE HURRICANE CUT.

ALL SHRUBS, TREES AND GROUND COVER WILL HAVE IMPROVED SOIL AS PER PLANTING SOIL NOTES. THE SOILS SHALL BE PLACED IN THE HOLE DURING PLANTING. TOP DRESSING ONLY IS NOT ACCEPTABLE.

DO NOT ALLOW AIR POCKETS TO FORM WHEN BACKFILLING. ALL TREES SHALL BE SPIKED IN UTILIZING WATER AND A TREE BAR.

THE LANDSCAPE CONTRACTOR SHALL WATER, MULCH, WEED, PRUNE, AND OTHERWISE MAINTAIN ALL PLANTS, INCLUDING SOD, UNTIL COMPLETION OF CONTRACT OR ACCEPTANCE BY LANDSCAPE ARCHITECT. SETTLED PLANTS SHALL BE RESET TO PROPER GRADE, PLANTING SAUCERS RESTORED, AND DEFECTIVE WORK CORRECTED.

THE LANDSCAPE CONTRACTOR SHALL AT ALL TIMES KEEP THE PREMISES FREE FROM ACCUMULATION OF WASTE MATERIALS OR DEBRIS CAUSED BY HIS CREWS DURING THE PERFORMANCE OF THE WORK. UPON COMPLETION OF THE WORK, THE CONTRACTOR SHALL PROMPTLY REMOVE ALL WASTE MATERIALS, DEBRIS, UNUSED PLANT MATERIAL, EMPTY PLANT CONTAINERS AND ALL EQUIPMENT FROM THE PROJECT SITE.

UPON COMPLETION OF THE WORK, THE LANDSCAPE CONTRACTOR SHALL NOTIFY THE LANDSCAPE ARCHITECT AND REQUEST A FINAL INSPECTION. ANY ITEMS THAT ARE JUDGED INCOMPLETE OR UNACCEPTABLE BY THE LANDSCAPE ARCHITECT OR OWNER'S REPRESENTATIVE SHALL BE PROMPTLY CORRECTED BY THE LANDSCAPE CONTRACTOR.

THE LANDSCAPE CONTRACTOR SHALL GUARANTEE ALL PLANT MATERIAL FOR A PERIOD OF SIX (6) MONTHS FROM THE DATE OF CONDITIONAL ACCEPTANCE IN WRITING FROM THE LANDSCAPE ARCHITECT. AT THE TIME OF CONDITIONAL ACCEPTANCE, THE SIX (6) MONTH PERIOD SHALL COMMENCE. ANY MATERIALS WHICH HAVE DIED DURING THIS PERIOD SHALL BE PROMPTLY REPLACED WITH SPECIMENS THAT MEET THE MINIMUM REQUIREMENTS CALLED FOR ON THE DRAWINGS. THE LANDSCAPE CONTRACTOR SHALL NOT BE HELD RESPONSIBLE FOR THE DEATH OR DAMAGE RESULTING FROM LIGHTNING, VANDALISM, AND AUTOMOBILES OR FROM NEGLIGENCE BY THE OWNER. CONTRACTOR SHALL BE RESPONSIBLE FOR WATERING AND OTHERWISE MAINTAINING PLANTS UP TO THE CONDITIONAL ACCEPTANCE PERIOD, UNLESS A WRITTEN AGREEMENT WITH THE LANDSCAPE ARCHITECT PROVIDES FOR A DIFFERENT ARRANGEMENT.

ALL LABOR AND MATERIAL FOR SOIL AMENDMENTS AND FERTILIZER THAT IS REQUIRED TO INSURE THE SUCCESSFUL ESTABLISHMENT AND SURVIVAL OF THE PROPOSED VEGETATION, AS WELL AS ALL THE COST FOR THE REMOVAL OF UNSUITABLE OR EXCESS BACKFILL MATERIAL, SHALL BE INCLUDED IN THE CONTRACTOR'S BID TO PERFORM THE WORK REPRESENTED IN THIS PLAN SET.

2. PLANTING TREES

EXCAVATE PIT AS PER PLANTING DETAILS. COMPACT LAYER OF TOPSOIL IN PIT WITH A SLIGHTLY DISHED GRADE TO CENTER.

BACKFILL AROUND BALL WITH TOPSOIL AND SLIGHTLY COMPACT, WATER THOROUGHLY IN LAYERS ARE PLACED TO ELIMINATE VOIDS AND AIR POCKETS. BUILD A 6" HIGH BERM OF TOPSOIL BEYOND EDGE OF EXCAVATION. APPLY 3" OF MULCH OVER ENTIRE SETTLMENT OF MULCH.

PRUNE TREE TO REMOVE DAMAGED BRANCHES, IMPROVE NATURAL SHAPE AND THIN OUT STRUCTURE. DO NOT REMOVE MORE THAN 15% OF BRANCHES. DO NOT PRUNE BACK TERMINAL LEADER.

GUY AND STAKE TREE IN ACCORDANCE WITH THE STAKING DETAILS IMMEDIATELY AFTER PLANTING.

3. PLANTING SHRUBS

LAYOUT SHRUBS TO CREATE A CONTINUOUS SMOOTH FRONT LINE AND FILL IN BEHIND.

EXCAVATE PIT OR TRENCH TO 2 TIMES THE DIAMETER OF THE BALLS OR CONTAINERS OR 1'-0" WIDER THAN THE SPREAD OF ROOTS AND 3" DEEPER THAN REQUIRED FOR POSITIONING AT PROPER HEIGHT. COVER WITH LAYER OF TOPSOIL IN BOTTOM BEFORE PLACING PLANTS. BACKFILL AROUND PLANTS WITH PLANTING MIXTURE, COMPACTED TO ELIMINATE VOIDS AND AIR POCKETS. FORM GRADE SLIGHTLY DISHED AND BERMED AT EDGES OF EXCAVATION. APPLY 3" OF MULCH.

PRUNE SHRUBS TO REMOVE DAMAGED BRANCHES, IMPROVE NATURAL SHAPE AND THIN OUT STRUCTURE. DO NOT REMOVE MORE THAN 15% OF BRANCHES.

4. PLANTING GROUND COVER

LOOSEN SUBGRADE TO DEPTH OF 4" IN AREAS WHERE TOPSOIL HAS BEEN STRIPPED AND SPREAD SMOOTH.

SPACE PLANTS AS OTHERWISE INDICATED. DIG HOLES LARGE ENOUGH TO ALLOW SPREADING OF ROOTS. COMPACT BACKFILL TO ELIMINATE VOIDS AND LEAVE GRADE SLIGHTLY DISHED AT EACH PLANT. WATER THOROUGHLY. APPLY 3" OF MULCH OVER ENTIRE PLANTING BED, LIFTING PLANT FOLIAGE ABOVE MULCH. PURPLE QUEEN GROUNDCOVER, IF SPECIFIED, SHALL ONLY RECEIVE 1" OF MULCH.

DURING PERIODS OF HOT SUN AND/OR WIND AT TIME OF PLANTING, PROVIDE PROTECTIVE COVER FOR SEVERAL DAYS OR AS NEEDED.

5. PLANTING LAWNS

SODDING: SOD TYPE SPECIFIED ON PLANT LIST SHALL BE MACHINE STRIPPED NOT MORE THAN 24 HOURS PRIOR TO LAYING.

LOOSEN SUBGRADE TO DEPTH OF 4" AND GRADE WITH TOPSOIL EITHER PROVIDED ON SITE OR IMPORTED TO FINISH DESIGN ELEVATIONS. ROLL PREPARED LAWN SURFACE. WATER THOROUGHLY, BUT DO NOT CREATE MUDDY SOIL CONDITION.

FERTILIZE SOIL AT THE RATE OF APPROXIMATELY 10 LBS. PER 1,000 S.F. SPREAD FERTILIZER OVER THE AREA TO RECEIVE GRASS BY USING AN APPROVED DISTRIBUTION DEVICE CALIBRATED TO DISTRIBUTE THE APPROPRIATE QUANTITY. DO NOT FERTILIZE WHEN WIND VELOCITY EXCEEDS 15 M.P.H. THOROUGHLY MIX FERTILIZER INTO THE TOP 2" OF TOPSOIL.

LAY SOD STRIPS WITH TIGHT JOINTS. DO NOT OVERLAP. STAGGER STRIPS TO OFFSET JOINTS IN ADJACENT COURSES. WORK SIFTED SOIL MIX INTO MINOR CRACKS BETWEEN PIECES OF SOD AND REMOVE EXCESS SOIL DEPOSITS FROM SODDED AREAS. SOD ON SLOPES GREATER THAN 3:1 SHALL BE STAKED IN PLACE. ROLL OR STAMP LIGHTLY AND WATER THOROUGHLY WITH A FINE SPRAY IMMEDIATELY AFTER PLANTING.

6. MISCELLANEOUS LANDSCAPE WORK

LANDSCAPE MAINTENANCE
 MAINTAIN LANDSCAPE WORK UNTIL FINAL ACCEPTANCE IS ISSUED BY THE OWNER'S REPRESENTATIVE. INCLUDE WATERING, WEEDING, CULTIVATING, RESTORATION OF GRADE, MOWING AND TRIMMING GRASS, PRUNING TREES AND SHRUBS, PROTECTION FROM INSECTS AND DISEASES, FERTILIZING AND SIMILAR OPERATIONS AS NEEDED TO INSURE NORMAL GROWTH AND GOOD HEALTH FOR LIVE PLANT MATERIAL.

PLANT MATERIAL SUBSTITUTION
 NO SUBSTITUTION OF PLANT MATERIAL, TYPE OR SIZES WILL BE PERMITTED WITHOUT AUTHORIZATION FROM THE LANDSCAPE ARCHITECT.

PLANTING BED PREPARATION
 ALL PLANTING BEDS SHALL BE PROPERLY PREPARED PRIOR TO THE COMMENCEMENT OF ANY PLANTING. PLANTING AREAS, INCLUDING LAWNS SHALL BE FREE OF ALL WEEDS AND NUISANCE VEGETATION. IF TORPEDO GRASS (PANICUM REPENS) IS PRESENT OR ENCOUNTERED DURING PLANTING, THE LANDSCAPE CONTRACTOR SHALL STOP ALL PLANTING UNTIL IT CAN BE DEMONSTRATED THAT IT HAS BEEN COMPLETELY REMOVED OR ERADICATED. THERE SHALL BE NO EXCEPTIONS TO THIS PROVISION.

ALL LANDSCAPE ISLANDS AND BEDS WILL BE FREE OF SHELL ROCK AND CONSTRUCTION DEBRIS AND WILL BE EXCAVATED TO A DEPTH OF 30 INCHES OR TO CLEAN, NATIVE SOIL AND FILLED WITH THE SPECIFIED BACKFILL MIXTURE.

PLANTING DETAILS

ALL LANDSCAPING AND SITE IMPROVEMENTS SHALL CONFORM TO ALL APPLICABLE PROVISIONS OF THE CITY OF PORT ST. LUCIE'S CHAPTER 153, LANDSCAPE AND LAND CLEARING CODE, CURRENT ADDITION AND ANY OTHER APPLICABLE CITY REGULATIONS.

THE LANDSCAPE CONTRACTOR SHALL NOT MAKE ANY SUBSTITUTIONS OR CHANGES WITHOUT THE AUTHORIZATION OF THE OWNER AND THE LANDSCAPE ARCHITECT.

THE LANDSCAPE CONTRACTOR SHALL REVIEW THE PROJECT DRAINAGE PLANS AND VERIFY THE LOCATION OF ALL UNDERGROUND UTILITIES PRIOR TO CONSTRUCTION AND AVOID ALL CONFLICTS.

THE LANDSCAPE CONTRACTOR BE RESPONSIBLE FOR ALL PERMITS RELATING TO HIS/HER WORK.

ALL LANDSCAPE PLANTED IN THE RIGHT-OF-WAY AND ON PRIVATE PROPERTY SHALL BE LOCATED SO THAT NO CONFLICT OCCURS WITH VEHICULAR SIGHT DISTANCES AT INTERSECTIONS AND AT DESIGNATED PEDESTRIAN CROSSWALKS.

NO FENCE, WALL, HEDGE, OR SHRUB PLANTING WHICH OBSTRUCTS SIGHT LINES AND ELEVATIONS BETWEEN TWO (2) AND SIX (6) FEET ABOVE THE CROWN OF THE ROAD SHALL BE PLACED OR PERMITTED TO REMAIN ON ANY CORNER LOT IN ANY ZONING DISTRICT WITHIN THE TRIANGULAR AREA FORMED BY THE STREET PROPERTY LINES AND A LINE CONNECTING THEM AT POINTS TWENTY-FIVE (25) FEET FROM THE INTERSECTION OF THE STREET LINES, OR IN THE CASE OF A ROUNDED PROPERTY CORNER FROM THE INTERSECTION OF THE STREET PROPERTY LINES EXTENDED. THE SAME SIGHT LINE LIMITATIONS SHALL APPLY ON ANY LOT WITHIN TEN (10) FEET FROM THE EDGE OF A DRIVEWAY OR ALLEY. NO TREE SHALL BE PERMITTED TO REMAIN WITHIN THE ABOVE DESCRIBED LIMITS OF INTERSECTIONS UNLESS THE FOLIAGE LINE IS MAINTAINED AT OR ABOVE SIX (6) FEET ABOVE THE ROADWAY INTERSECTION ELEVATION TO PREVENT OBSTRUCTION OF SIGHT LINES.

ALL LANDSCAPING SHALL BE LOCATED IN THE RIGHT-OF-WAY AND OR ON PRIVATE PROPERTY SO THAT NO CONFLICT OCCURS WITH DESIGNATED CITY DRAINAGE AND / OR UTILITY EASEMENTS, OVERHEAD AND UNDERGROUND UTILITY LINES AND OR UTILITY STRUCTURES. NO TREE ARE ALLOWED IN UTILITY EASEMENTS OR CLOSER THAN TEN FEET TO ANY CITY UTILITY LINES.

TREES AT ENTRANCEWAYS AND ADJACENT TO LIGHT POLES SHALL BE LIMBED UP TO MAXIMIZE SITE DISTANCE, CLEAR VISIBILITY SHALL BE MAINTAINED BETWEEN 2'4" AND 8'. TREES SHALL BE POSITIONED TO AVOID CONFLICTS WITH SITE LIGHTING.

PLANTING ISLANDS WITHIN AND ADJACENT TO PARKING AREAS SHALL BE FREE OF LIME ROCK AND OTHER FOREIGN MATERIALS TO A DEPTH OF 30". IF NECESSARY, RECYCLED PLANTING SOIL MIXTURE SHOULD BE USED TO REPLACE UNSUITABLE SOIL, WHICH IS EXCAVATED.

THE SURFACE OF ALL AREAS TO RECEIVE LANDSCAPING WILL BE FINELY GRADED AND SET SO DIPS AND DEPRESSIONS ARE REMOVED AND POSITIVE DRAINAGE IS ACHIEVED. THE FINISHED GRADE OF SOD AND MULCH AREAS SHALL BE SET SO THAT MULCH WASKETS DO NOT OCCUR AND THERE IS A SMOOTH TRANSITION FROM PAVED SURFACES TO ADJACENT LAWN AREAS.

ALL TREES, SHRUBS AND GROUNDCOVER BEDS ARE REQUIRED TO BE MULCHED WITH A 3" MIN. THICK LAYER OF MULCH. TREES LOCATED IN TURF AREAS SHALL BE MULCHED WITH A THICK LAYER OF MULCH. MULCHING SHALL BE PERFORMED WITHIN 24 HOURS OF PLANTING. THE TREE RING IS REQUIRED TO BE A MINIMUM DIAMETER OF 3" AROUND SMALL TREES AND 5" AROUND LARGE TREES, TO FACILITATE MOWING. MULCH SHALL BE KEPT THREE FEET AWAY FROM THE TRUNK.

ALL TREE STAKING MATERIALS SHALL BE LOCATED WITHIN MULCH BEDS AND OR RINGS.

ALL AREAS SHALL BE FULLY IRRIGATED IN ACCORDANCE WITH THE REQUIREMENTS OF THE CITY OF PORT ST. LUCIE. IRRIGATION SHOP DRAWINGS SHALL BE SUBMITTED TO THE OWNER AND LANDSCAPE ARCHITECT FOR APPROVAL PRIOR TO CONSTRUCTION. THE IRRIGATION SYSTEM SHALL BE DESIGNED TO PROVIDE 100% OVERLAP COVERAGE TO ALL LANDSCAPE AND SOD AREAS. THE IRRIGATION WATER SOURCE SHALL BE WELL WATER OR SUCTION FROM AN ONSITE STORMWATER MANAGEMENT AREA. THE IRRIGATION SYSTEM SHALL BE EQUIPPED WITH A RAIN SENSOR/CUT OFF SWITCH IN ACCORDANCE WITH STATE AND LOCAL REQUIREMENTS.

ALL ABOVE GROUND UTILITIES I.E. TRANSFORMERS, SWITCH BOXES, AIR CONDITIONER, CONDENSERS, SHALL BE FULLY SCREENED FROM VIEW ON THREE SIDES WITH LANDSCAPING WHICH MUST EXTEND ONE FOOT HIGHER THAN THE TALLEST POINT OF SAID EQUIPMENT AT TIME OF PLANTING.

NO LANDSCAPING SHALL BE LOCATED WITHIN 10' OF A CITY LINE OR APPURTENANCE. ALL OTHER UTILITIES SHALL BE A MINIMUM OF 5' HORIZONTAL SEPARATION FROM CITY UTILITY MAINS FOR PARALLEL INSTALLATIONS AND A MINIMUM OF 18" BELOW CITY UTILITY MAINS. (ALL MEASUREMENTS ARE TAKEN FROM OUTSIDE TO OUTSIDE)

NO LANDSCAPING SHALL BE PLACED IN A MANNER THAT WOULD CREATE CONFLICTS WITH THE INTENDED OPERATION AND MAINTENANCE OF ANY EXISTING UTILITY.

ST. AUGUSTINE SOD WILL BE UTILIZED FOR ALL TURF AREAS, EXCEPT AS NOTED. BAHIA SOD WILL BE UTILIZED IN DRY RETENTION AREAS AND IN AREAS OF EXISTING TREES TO REMAIN.

ALL TREES PLANTED UNDER OR ADJACENT TO P98L POWERLINES WILL COMPLY WITH THE P98L "RIGHT TREE, RIGHT PLACE" GUIDELINES.

NO LANDSCAPING SHALL BE PLANTED IN A MANNER THAT WOULD ADVERSELY AFFECT UTILITY EASEMENTS, LANDSCAPING SHALL BE IN COMPLIANCE WITH CHAPTER 154 OF THE CITY OF PORT ST. LUCIE CODE OF ORDINANCES, PSLUSD TECHNICAL SPECIFICATIONS AND POLICES.

1. ALL LANDSCAPING WITHIN CITY UTILITY EASEMENTS SHALL COMPLY WITH PSLUSD TECHNICAL SPECIFICATIONS, POLICES, AND CODES.

2. ALL LANDSCAPING SHALL MEET THE LATEST PSLUSD LANDSCAPE POLICY AND SHALL NOT BE PLACED IN A MANNER THAT WOULD CREATE CONFLICTS WITH THE INTENDED OPERATION AND MAINTENANCE OF ANY EXISTING UTILITY.

3. TREES SHALL NOT BE PLANTED WITHIN 10' OF ANY PSLUSD UNDERGROUND INFRASTRUCTURE.

4. NO LANDSCAPING OTHER THAN SOD GRASSES SHALL BE LOCATED WITHIN 5' OF A UTILITY APPURTENANCE SUCH AS A WATER METER ASSEMBLY, BACKFLOW DEVICE, FIRE HYDRANT, OR SEWER CLEANOUT, ETC.

GENERAL LANDSCAPE NOTES:
 1. NO TREE OR OTHER INTRUSIVE ROOT PLANTINGS SHALL BE LOCATED WITHIN 10' OF A CITY UTILITY MAIN. ALL OTHER UTILITIES SHALL BE A MINIMUM OF 5' HORIZONTAL SEPARATION FROM CITY UTILITY MAINS FOR PARALLEL INSTALLATIONS AND A MINIMUM OF 18" BELOW CITY UTILITY MAINS (ALL MEASUREMENTS ARE FOR OUTSIDE TO OUTSIDE).

2. NO LANDSCAPING SHALL BE PLACED IN A MANNER THAT WOULD CREATE CONFLICTS WITH THE INTENDED OPERATION AND MAINTENANCE OF ANY EXISTING OR PROPOSED WATER/WASTEWATER UTILITY LINES.

3. ALL LANDSCAPE MATERIAL TO BE FL NO. 1.

4. ALL LANDSCAPING MEETS FDOT CLEAR ZONE AND SIGHT DISTANCE CRITERIA.

5. NO LANDSCAPING SHALL BE PLANTED IN SUCH A MANNER AS TO ADVERSELY AFFECT UTILITY INSTALLATION, OPERATION AND MAINTENANCE.

6. BERMS AND STRUCTURAL LANDSCAPE FEATURES SUCH AS ROCK, FOUNDATIONS, SCULPTURE, DECORATIVE WALL AND TREE WELLS AND GENERALLY NOT ALLOWED IN PSLUSD EASEMENTS, BUT MAY BE REVIEWED ON A CASE BY CASE BASIS.

7. ALL MEASUREMENTS ARE FROM OUTSIDE TO OUTSIDE, NOT CENTERLINE TO CENTERLINE. EXAMPLE: OUTSIDE OF PIPE TO NEAREST POINT ON TREE TRUNK.

8. TREES SHALL NOT BE PLANTED WITHIN 10 FEET OF ANY PSLUSD MAINS OR APPURTENANCES.

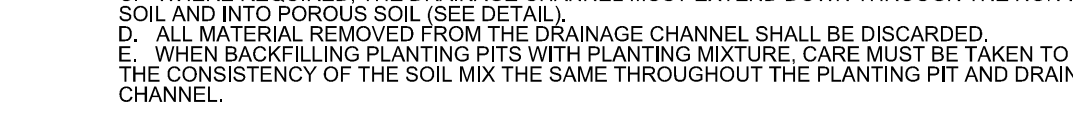
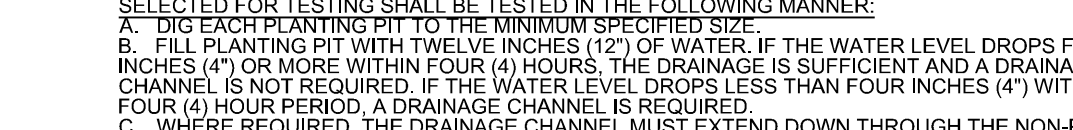
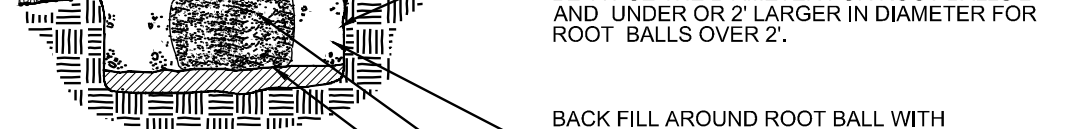
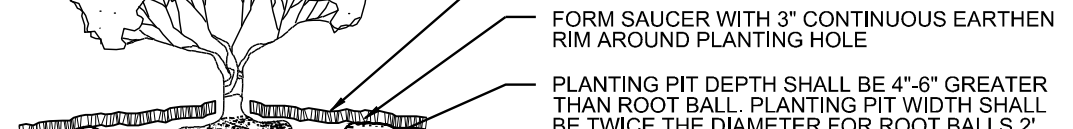
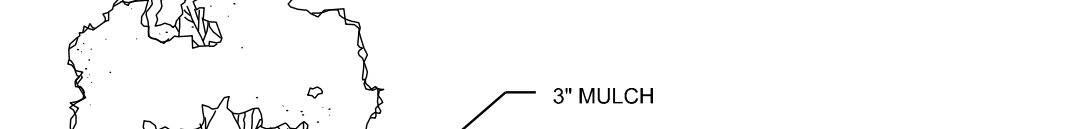
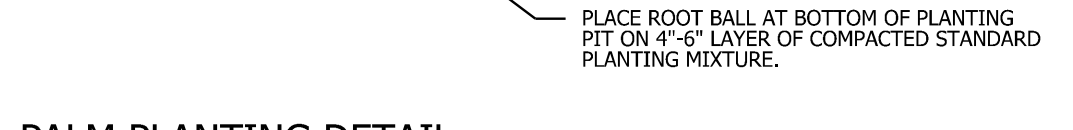
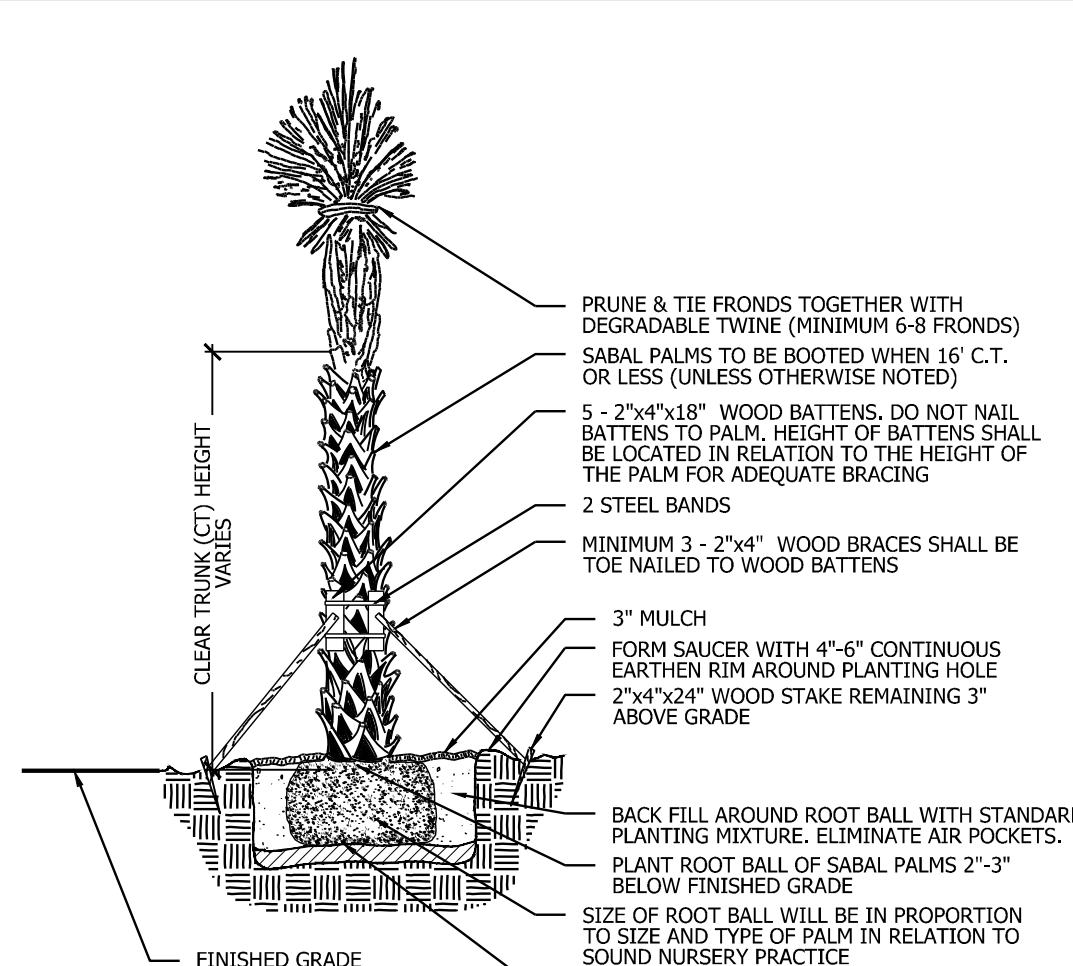
9. NO LANDSCAPING OTHER THAN SOD GRASSES MAY BE PLANTED WITHIN A 5' RADIUS MAINTENANCE AREA OF ANY PSLUSD APPURTENANCE SUCH AS WATER METERS, BACKFLOW DEVICES, FIRE HYDRANTS, SANITARY SEWER CLEANOUTS, AND MANHOLES, AIR RELEASE VALVES, ETC.

10. ALL LANDSCAPING WITHIN PORT ST. LUCIE UTILITY SYSTEMS DEPARTMENT (PSLUSD) UTILITY EASEMENTS SHALL COMPLY WITH PSLUSD TECHNICAL SPECIFICATIONS, POLICES, AND CODES. TREES SHALL NOT BE PLANTED WITHIN TEN (10) FEET OF ANY PSLUSD UNDERGROUND INFRASTRUCTURE.

LANDSCAPE IRRIGATION NOTES:
 A. ALL AREAS TO RECEIVE 100% IRRIGATION COVERAGE
 B. ALL ZONES TO BE AUTOMATICALLY CONTROLLED
 C. CLOCKS TO HAVE AUTOMATIC TRAIN SENSORS
 D. WATER SOURCE MAY BE POTABLE OR WELL AND SHALL BE DETERMINED AT TIME OF BUILDING PERMIT APPLICATION
 E. THE IRRIGATION SYSTEM WILL BE DESIGNED TO ACCEPT RECLAIMED WASTEWATER ONCE IT BECOMES AVAILABLE TO THE PROPERTY

NO LIGHT POLE OR ASSOCIATED CONDUIT SHALL BE LOCATED WITHIN 5' OF A PSLUSD FACILITY.

LANDSCAPE NOTES



LANDSCAPE NOTES

ALL LANDSCAPING AND SITE IMPROVEMENTS SHALL CONFORM TO ALL APPLICABLE PROVISIONS OF THE CITY OF PORT ST. LUCIE'S CHAPTER 153, LANDSCAPE AND LAND CLEARING CODE, CURRENT ADDITION AND ANY OTHER APPLICABLE CITY REGULATIONS.

THE LANDSCAPE CONTRACTOR SHALL NOT MAKE ANY SUBSTITUTIONS OR CHANGES WITHOUT THE AUTHORIZATION OF THE OWNER AND THE LANDSCAPE ARCHITECT.

THE LANDSCAPE CONTRACTOR SHALL REVIEW THE PROJECT DRAINAGE PLANS AND VERIFY THE LOCATION OF ALL UNDERGROUND UTILITIES PRIOR TO CONSTRUCTION AND AVOID ALL CONFLICTS.

THE LANDSCAPE CONTRACTOR BE RESPONSIBLE FOR ALL PERMITS RELATING TO HIS/HER WORK.

ALL LANDSCAPE PLANTED IN THE RIGHT-OF-WAY AND ON PRIVATE PROPERTY SHALL BE LOCATED SO THAT NO CONFLICT OCCURS WITH VEHICULAR SIGHT DISTANCES AT INTERSECTIONS AND AT DESIGNATED PEDESTRIAN CROSSWALKS.

NO FENCE, WALL, HEDGE, OR SHRUB PLANTING WHICH OBSTRUCTS SIGHT LINES AND ELEVATIONS BETWEEN TWO (2) AND SIX (6) FEET ABOVE THE CROWN OF THE ROAD SHALL BE PLACED OR PERMITTED TO REMAIN ON ANY CORNER LOT IN ANY ZONING DISTRICT WITHIN THE TRIANGULAR AREA FORMED BY THE STREET PROPERTY LINES AND A LINE CONNECTING THEM AT POINTS TWENTY-FIVE (25) FEET FROM THE INTERSECTION OF THE STREET LINES, OR IN THE CASE OF A ROUNDED PROPERTY CORNER FROM THE INTERSECTION OF THE STREET PROPERTY LINES EXTENDED. THE SAME SIGHT LINE LIMITATIONS SHALL APPLY ON ANY LOT WITHIN TEN (10) FEET FROM THE EDGE OF A DRIVEWAY OR ALLEY. NO TREE SHALL BE PERMITTED TO REMAIN WITHIN THE ABOVE DESCRIBED LIMITS OF INTERSECTIONS UNLESS THE FOLIAGE LINE IS MAINTAINED AT OR ABOVE SIX (6) FEET ABOVE THE ROADWAY INTERSECTION ELEVATION TO PREVENT OBSTRUCTION OF SIGHT LINES.

ALL LANDSCAPING SHALL BE LOCATED IN THE RIGHT-OF-WAY AND OR ON PRIVATE PROPERTY SO THAT NO CONFLICT OCCURS WITH DESIGNATED CITY DRAINAGE AND / OR UTILITY EASEMENTS, OVERHEAD AND UNDERGROUND UTILITY LINES AND OR UTILITY STRUCTURES. NO TREE ARE ALLOWED IN UTILITY EASEMENTS OR CLOSER THAN TEN FEET TO ANY CITY UTILITY LINES.

TREES AT ENTRANCEWAYS AND ADJACENT TO LIGHT POLES SHALL BE LIMBED UP TO MAXIMIZE SITE DISTANCE, CLEAR VISIBILITY SHALL BE MAINTAINED BETWEEN 2'4" AND 8'. TREES SHALL BE POSITIONED TO AVOID CONFLICTS WITH SITE LIGHTING.

PLANTING ISLANDS WITHIN AND ADJACENT TO PARKING AREAS SHALL BE FREE OF LIME ROCK AND OTHER FOREIGN MATERIALS TO A DEPTH OF 30". IF NECESSARY, RECYCLED PLANTING SOIL MIXTURE SHOULD BE USED TO REPLACE UNSUITABLE SOIL, WHICH IS EXCAVATED.

THE SURFACE OF ALL AREAS TO RECEIVE LANDSCAPING WILL BE FINELY GRADED AND SET SO DIPS AND DEPRESSIONS ARE REMOVED AND POSITIVE DRAINAGE IS ACHIEVED. THE FINISHED GRADE OF SOD AND MULCH AREAS SHALL BE SET SO THAT MULCH WASKETS DO NOT OCCUR AND THERE IS A SMOOTH TRANSITION FROM PAVED SURFACES TO ADJACENT LAWN AREAS.

ALL TREES, SHRUBS AND GROUNDCOVER BEDS ARE REQUIRED TO BE MULCHED WITH A 3" MIN. THICK LAYER OF MULCH. TREES LOCATED IN TURF AREAS SHALL BE MULCHED WITH A THICK LAYER OF MULCH. MULCHING SHALL BE PERFORMED WITHIN 24 HOURS OF PLANTING. THE TREE RING IS REQUIRED TO BE A MINIMUM DIAMETER OF 3" AROUND SMALL TREES AND 5" AROUND LARGE TREES, TO FACILITATE MOWING. MULCH SHALL BE KEPT THREE FEET AWAY FROM THE TRUNK.

ALL TREE STAKING MATERIALS SHALL BE LOCATED WITHIN MULCH BEDS AND OR RINGS.

ALL AREAS SHALL BE FULLY IRRIGATED IN ACCORDANCE WITH THE REQUIREMENTS OF THE CITY OF PORT ST. LUCIE. IRRIGATION SHOP DRAWINGS SHALL BE SUBMITTED TO THE OWNER AND LANDSCAPE ARCHITECT FOR APPROVAL PRIOR TO CONSTRUCTION. THE IRRIGATION SYSTEM SHALL BE DESIGNED TO PROVIDE 100% OVERLAP COVERAGE TO ALL LANDSCAPE AND SOD AREAS. THE IRRIGATION WATER SOURCE SHALL BE WELL WATER OR SUCTION FROM AN ONSITE STORMWATER MANAGEMENT AREA. THE IRRIGATION SYSTEM SHALL BE EQUIPPED WITH A RAIN SENSOR/CUT OFF SWITCH IN ACCORDANCE WITH STATE AND LOCAL REQUIREMENTS.

ALL ABOVE GROUND UTILITIES I.E. TRANSFORMERS, SWITCH BOXES, AIR CONDITIONER, CONDENSERS, SHALL BE FULLY SCREENED FROM VIEW ON THREE SIDES WITH LANDSCAPING WHICH MUST EXTEND ONE FOOT HIGHER THAN THE TALLEST POINT OF SAID EQUIPMENT AT TIME OF PLANTING.

NO LANDSCAPING SHALL BE LOCATED WITHIN 10' OF A CITY LINE OR APPURTENANCE. ALL OTHER UTILITIES SHALL BE A MINIMUM OF 5' HORIZONTAL SEPARATION FROM CITY UTILITY MAINS FOR PARALLEL INSTALLATIONS AND A MINIMUM OF 18" BELOW CITY UTILITY MAINS. (ALL MEASUREMENTS ARE TAKEN FROM OUTSIDE TO OUTSIDE)

NO LANDSCAPING SHALL BE PLACED IN A MANNER THAT WOULD CREATE CONFLICTS WITH THE INTENDED OPERATION AND MAINTENANCE OF ANY EXISTING UTILITY.

ST. AUGUSTINE SOD WILL BE UTILIZED FOR ALL TURF AREAS, EXCEPT AS NOTED. BAHIA SOD WILL BE UTILIZED IN DRY RETENTION AREAS AND IN AREAS OF EXISTING TREES TO REMAIN.

ALL TREES PLANTED UNDER OR ADJACENT TO P98L POWERLINES WILL COMPLY WITH THE P98L "RIGHT TREE, RIGHT PLACE" GUIDELINES.

NO LANDSCAPING SHALL BE PLANTED IN A MANNER THAT WOULD ADVERSELY AFFECT UTILITY EASEMENTS, LANDSCAPING SHALL BE IN COMPLIANCE WITH CHAPTER 154 OF THE CITY OF PORT ST. LUCIE CODE OF ORDINANCES, PSLUSD TECHNICAL SPECIFICATIONS AND POLICES.

1. ALL LANDSCAPING WITHIN CITY UTILITY EASEMENTS SHALL COMPLY WITH PSLUSD TECHNICAL SPECIFICATIONS, POLICES, AND CODES.

2. ALL LANDSCAPING SHALL MEET THE LATEST PSLUSD LANDSCAPE POLICY AND SHALL NOT BE PLACED IN A MANNER THAT WOULD CREATE CONFLICTS WITH THE INTENDED OPERATION AND MAINTENANCE OF ANY EXISTING UTILITY.

3. TREES SHALL NOT BE PLANTED WITHIN 10' OF ANY PSLUSD UNDERGROUND INFRASTRUCTURE.

4. NO LANDSCAPING OTHER THAN SOD GRASSES SHALL BE LOCATED WITHIN 5' OF A UTILITY APPURTENANCE SUCH AS A WATER METER ASSEMBLY, BACKFLOW DEVICE, FIRE HYDRANT, OR SEWER CLEANOUT, ETC.

GENERAL LANDSCAPE NOTES:
 1. NO TREE OR OTHER INTRUSIVE ROOT PLANTINGS SHALL BE LOCATED WITHIN 10' OF A CITY UTILITY MAIN. ALL OTHER UTILITIES SHALL BE A MINIMUM OF 5' HORIZONTAL SEPARATION FROM CITY UTILITY MAINS FOR PARALLEL INSTALLATIONS AND A MINIMUM OF 18" BELOW CITY UTILITY MAINS (ALL MEASUREMENTS ARE FOR OUTSIDE TO OUTSIDE).

2. NO LANDSCAPING SHALL BE PLACED IN A MANNER THAT WOULD CREATE CONFLICTS WITH THE INTENDED OPERATION AND MAINTENANCE OF ANY EXISTING OR PROPOSED WATER/WASTEWATER UTILITY LINES.

3. ALL LANDSCAPE MATERIAL TO BE FL NO. 1.

4. ALL LANDSCAPING MEETS FDOT CLEAR ZONE AND SIGHT DISTANCE CRITERIA.

5. NO LANDSCAPING SHALL BE PLANTED IN SUCH A MANNER AS TO ADVERSELY AFFECT UTILITY INSTALLATION, OPERATION AND MAINTENANCE.

6. BERMS AND STRUCTURAL LANDSCAPE FEATURES SUCH AS ROCK, FOUNDATIONS, SCULPTURE, DECORATIVE WALL AND TREE WELLS AND GENERALLY NOT ALLOWED IN PSLUSD EASEMENTS, BUT MAY BE REVIEWED ON A CASE BY CASE BASIS.

7. ALL MEASUREMENTS ARE FROM OUTSIDE TO OUTSIDE, NOT CENTERLINE TO CENTERLINE. EXAMPLE: OUTSIDE OF PIPE TO NEAREST POINT ON TREE TRUNK.

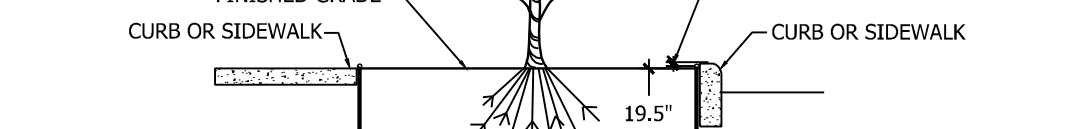
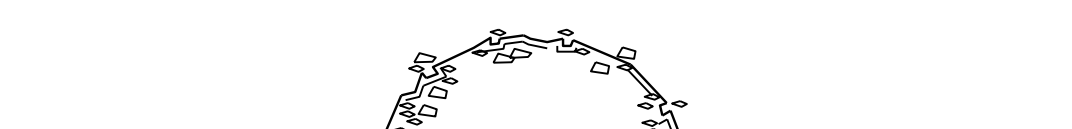
8. TREES SHALL NOT BE PLANTED WITHIN 10 FEET OF ANY PSLUSD MAINS OR APPURTENANCES.

9. NO LANDSCAPING OTHER THAN SOD GRASSES MAY BE PLANTED WITHIN A 5' RADIUS MAINTENANCE AREA OF ANY PSLUSD APPURTENANCE SUCH AS WATER METERS, BACKFLOW DEVICES, FIRE HYDRANTS, SANITARY SEWER CLEANOUTS, AND MANHOLES, AIR RELEASE VALVES, ETC.

10. ALL LANDSCAPING WITHIN PORT ST. LUCIE UTILITY SYSTEMS DEPARTMENT (PSLUSD) UTILITY EASEMENTS SHALL COMPLY WITH PSLUSD TECHNICAL SPECIFICATIONS, POLICES, AND CODES. TREES SHALL NOT BE PLANTED WITHIN TEN (10) FEET OF ANY PSLUSD UNDERGROUND INFRASTRUCTURE.

LANDSCAPE IRRIGATION NOTES:
 A. ALL AREAS TO RECEIVE 100% IRRIGATION COVERAGE
 B. ALL ZONES TO BE AUTOMATICALLY CONTROLLED
 C. CLOCKS TO HAVE AUTOMATIC TRAIN SENSORS
 D. WATER SOURCE MAY BE POTABLE OR WELL AND SHALL BE DETERMINED AT TIME OF BUILDING PERMIT APPLICATION
 E. THE IRRIGATION SYSTEM WILL BE DESIGNED TO ACCEPT RECLAIMED WASTEWATER ONCE IT BECOMES AVAILABLE TO THE PROPERTY

NO LIGHT POLE OR ASSOCIATED CONDUIT SHALL BE LOCATED WITHIN 5' OF A PSLUSD FACILITY.



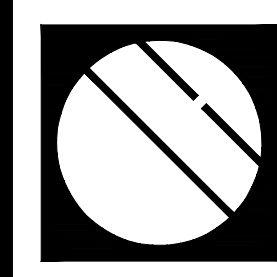
LANDSCAPE SPECIFICATIONS

CODE	QTY	BOTANICAL NAME	COMMON NAME	CONTAINER	CALIPER	SIZE	NATIVE	REMARKS
TREES								
BB4	6	BAUHINIA X BLAKEANA	HONG KONG ORCHID TREE	8 & B	2.5" CAL	12' - 14' HT	N	FULL CANOPY
CS5	6	CLUSIA ROSEA	SMALL-LEAF CLUSIA	65 GAL	2.5" CAL	12' HT. X 5' SPD	Y	SINGLE TRUNK, STANDARD
CE	52	CONOCARPUS ERECTUS	GREEN BUTTONWOOD	45 GAL, MIN	2.5" CAL	12'-14' HT.	Y	FULL CANOPY, FL #1
CBS*	5	CONOCARPUS ERECTUS 'SERICEUS'	SILVER BUTTONWOOD	65 GAL	2.5" CAL	12' HT	Y	FULL CANOPY, STANDARD, SINGLE TRUNK
ED	3	ELAEOCARPUS DECIPIENS	JAPANESE BLUEBERRY TREE	45 GAL	2.5" CAL	12'-14' HT	N	STANDARD, FULL, DENSE, SYMMETRICAL FOLIAGE
IEP-10	37	ILEX X ATTENUATA 'EAGLESTON HOLLY'	EAGLESTON HOLLY	CONTAINERIZED	2.5" CAL	12' - 14' HT	Y	FULL, SYMMETRICAL CANOPY, STRAIGHT TRUNK, FULL TO BASE
QV	24	QUERCUS VIRGINIANA	SOUTHERN LIVE OAK	65 GAL OR FG	2.5" CAL	12'-14' OA	Y	FLORIDA #1, DOUBLE DUG ROOT BALL
MEDIUM TREES								
CBP	26	CALLIANDRA BREVIPES	PINK POWDERPUFF	25 GAL	2" CAL	5' - 6' O.A. HT.	N	FULL CANOPY
JVS	21	JUNIPERUS VIRGINIANA SILVICOLA	SOUTHERN RED CEDAR	45 GAL	1" - 1.5"	6' - 8' HT	Y	FULL CANOPY TO BASE, MULTI TRUNK
TG	8	TIBOUCHINA GRANULOSA	PURPLE GLORY TREE	45 GAL	1.5" CAL	5'-6' OA HT	N	STANDARD, FL #1
PALM TREES								
AM2	3	ADONIDIA MERRILLII DOUBLE	DOUBLE CHRISTMAS PALM	FIELD GROWN	NA	8' C.T.	N	FL #1, 2 TRUNK
AA2	4	ARCHONTOPHOENIX ALEXANDRAE	KING ALEXANDER PALM	FIELD GROWN	NA	8' C.T.	N	FULL CANOPY, MATCHED, FL #1
CAT-5	6	CHAMAEDOREA CATARACTARUM	CAT PALM	CONTAINERIZED	NA	5' OA	N	FULL, DENSE FOLIAGE TO BASE
CR3	2	CHAMAEROPS HUMILIS	EUROPEAN FAN PALM	25 GAL	NA	3' HT X 3' SPRD	N	FOUR STEM MIN., LIMB UP 2'
CH	1	CHAMAEROPS HUMILIS	EUROPEAN FAN PALM	45 GAL	NA	5' OA X 5' SPRD	N	FOUR STEM MIN., LIMB UP 2'
H03	2	HYOPHORBE LAGENICLAUS	BOTTLE PALM	8 & B	NA	4' CT	N	FULL & THICK, 3 TRUNK MIN, MATCHED
LD2	16	LIVISTONA DECIPIENS	RIBBON PALM	8 & B	N/A	10'-12' C.T.	N	MATCHED
PHM	10	PHOENIX DACTYLIFERA 'MEDJOOL'	MEDJOOL DATE PALM	FIELD GROWN	NA	12' C.T.	N	FULL, MATCHED, SYMMETRICAL, DIAMOND CUT TRUNK, FLORIDA FANCY
PR3	1	PHOENIX ROBELENI	PYGYM DATE PALM	25 GAL	N/A	5' O.A., 5' SPRD	N	MULTI-TRUNK, FULL CANOPY, 3 TRUNK MIN.
PR4	7	PHOENIX ROBELENI	PYGYM DATE PALM	FIELD GROWN	NA	8' CT.	N	SINGLE TRUNK, FULL CANOPY
RB-5	6	RHAPIS EXCELSA	LADY PALM	25 GAL	NA	7'-8' C.T.	Y	FULL & THICK, FLORIDA FANCY
SP12	12	SABAL PALMETTO	SABAL PALM	FIELD GROWN	NA	12' CT	Y	STRAIGHT TRUNK W/ BOOTS, CANDLE CUT
SP18	11	SABAL PALMETTO	SABAL PALM	FIELD GROWN	NA	18' CT	Y	STRAIGHT TRUNK, CANDLE CUT
SP21	13	SABAL PALMETTO	SABAL PALM	FIELD GROWN	NA	21' CT	Y	STRAIGHT TRUNK, CANDLE CUT
SP24	7	SABAL PALMETTO	SABAL PALM	FIELD GROWN	NA	24' CT	Y	STRAIGHT TRUNK, CANDLE CUT
SL	3	SATAKENTIA LIUKIENSIS	SATAKENTIA PALM	8 & B	N.A.	10' CT	N	HEAVY CALIPER, FULL, UNDEGRADED HEAD, MATCHING HEAD HEIGHTS.
VM	7	VIETCHIA MONTGOMERYANA	MONTGOMERY PALM	FIELD GROWN	NA	8' GW	N	FULL AND THICK, FLORIDA FANCY
SHRUBS								
AGB	4	AGAVE AMERICANA 'GAINSVILLE BLUE'	GAINSVILLE BLUE AGAVE	15 GAL	3' X 3'	A.S.	N	FULL & THICK
AGA	3	AGAVE ATTENUATA	FOXTAIL AGAVE	15 GAL	4' X 4'	A.S.	N	FULL & THICK
B02	8	BAMBUSA TEXTILIS 'GRACILIS'	SLENDER WEAVER'S BAMBOO	15 GAL	12'-15' HT	AS	N	FULL AND THICK
B0F	9	BOUGAINVILLEA 'FUCHSIA'	FUCHSIA BOUGAINVILLEA	15 GAL	3' X 3' BUSH	AS	N	FULL, SPECIMEN, DENSE FOLIAGE ONLY
B6	4	BOUGAINVILLEA 'NEW RIVER'	NEW RIVER PURPLE BOUGAINVILLEA	15 GAL	3' X 3' BUSH	A.S.	N	THICK AND FULL, SPECIMEN, DENSE FOILAGE ONLY
JO-3	293	CAPPARIA CYNOPHALLOPHORA	JAMAICAN CAPER	7 GAL	3'-4'	2'-3'	Y	FULL DENSE FOLIAGE TO BASE,
CI-3	73	CHRYSOBALANUS ICACO	GREEN COCOPLUM	CONTAINERIZED	2'	24"	Y	FULL DENSE FOLIAGE TO BASE
CI7	769	CHRYSOBALANUS ICACO 'RED TIP'	RED TIP COCOPLUM	7 GAL	3' X 2'	2.5' O.C.	Y	FULL & THICK
CI6	31	CLUSIA GUTTIFERA	CLUSIA	15 GAL	6' X 3'	3' OC	N	FULL & THICK
CI6-6	17	CLUSIA GUTTIFERA	SMALL LEAF CLUSIA	15 GAL	6'	36"	N	FULL, DENSE FOLIAGE TO BASE
CO	320	CLUSIA GUTTIFERA	SMALL LEAF CLUSIA	7 GAL	2' X 2'	2' O.C.	N	FULL & THICK
CO-2	208	CLUSIA GUTTIFERA	SMALL LEAF CLUSIA	CONTAINERIZED	2'	2' SPR. 2' O.C.	N	FULL, DENSE FOLIAGE TO BASE
CO2	570	CLUSIA GUTTIFERA 'NANA'	DWARF CLUSIA	3 GAL	2' X 2'	2' OC	N	FULL & THICK, FLORIDA FANCY
CO2	23	CODIAEUM VARIEGATUM 'DREADLOCKS'	DREADLOCKS CROTON	7 GAL	3' X 2'	A.S.	N	FULL & THICK
CS3	49	CONOCARPUS ERECTUS SERICEUS	SILVER BUTTONWOOD	7 GAL	3' X 3'	3' OC	Y	FLORIDA FANCY, FULL & THICK
DO	18	DENDROBIUM SPP. & VANDA ORCHIDS	ORCHID	1 GAL OR 6" POT	6"	AS	N	INTACT LEAVES, ATTACH TO TRUNK OF ROEBELENI PALM TRUNKS TO BE VIEWED FROM BEDROOM WINDOW AND PERGOLA. INSTALL WITH SPHAGNUM MOSS AND FISHING LINE. COLOR AND SPECIES TO BE APPROVED BY LA OR CLIENT. PROVIDE MIST IRRIGATION
DRA-D	8	DRACAENA ARBOREA	DRACAENA ARBOREA - DOUBLE	8 & B	5'-6'	4'	N	DOUBLE TRUNK, INTACT FOLIAGE, STAGGERED HEADS, TALLEST HEAD AT 5' PROVIDE PHOTOS TO LANDSCAPE ARCHITECT FOR APPROVAL
DA-T2	6	DRACAENA ARBOREA	DRACAENA ARBOREA - TRIPLE	CONTAINERIZED	7-8'	4-5'	N	INTACT FOLIAGE, FULL HEADS, TRIPLE PROVIDE PHOTOS TO LANDSCAPE ARCHITECT FOR APPROVAL
IX2	108	IXORA 'NORA GRANT'	PINK IXORA	7 GAL	3' X 3'	3' OC	N	FULL & THICK
MU2	32	MUHLENBERGIA CAPILLARIS	PINK MUHLY GRASS	3 GAL	18" X 18"	2.5' OC	Y	FULL & THICK
PH3	115	PHILODENDRON XANADU	XANADU PHILODENDRON	3 GAL	2' X 2'	AS	N	THICK AND FULL
PH3	9	PODOCARPUS 'MAKI'	PODOCARPUS	3 GAL	3' X 2'	2' OC	N	FULL & THICK.
PD7	344	PODOCARPUS MACROPHYLLUS 'DWARF PRINGLES'	DWARF PODOCARPUS	7 GAL	1.5' X 1.5'	1.5' OC	N	FULL & THICK
PM-4	135	PODOCARPUS MACROPHYLLUS MAKI	SHRUBBY YEW	CONTAINERIZED	4'	20"	N	FULL DENSE FOLIAGE TO BASE, SHEAR TO 3' OA
SG0	123	SCHEFFLERA ARBORICOLA 'GOLD CAPELLA'	GOLD CAPELLA SCHEFFLERA	3 GAL	2' X 2'	2' OC	N	FULL & THICK
SN-82	15	STRELITZIA NICOLAI	WHITE BIRD OF PARADISE	CONTAINERIZED	7' - 8'	5'	Y	FULL, DENSE, MULTI STEMS. PROVIDE PHOTOS TO LANDSCAPE ARCHITECT FOR APPROVAL
SR-9	60	STRELITZIA REGINAE	ORANGE BIRD OF PARADISE	7 GAL	4'-5'	4'	N	FULL DENSE FOLIAGE TO BASE, SUCKERING
WV7	21	VIBURNUM OBOVATUM 'WALTERS'	WALTER 'S VIBURNUM	7 GAL	3' X 3'	3' OC	Y	FULL & THICK
ACCENTS								
ALC	3	ALCANTAREA IMPERIALIS 'SILVER'	GIANT SILVER BROMELIAD	7 GAL	36"	AS	N	FULL CONTAINER, INTACT LEAVES
NEO-D	10	NEOREGELIA 'DONGER'	DONGER BROMELIAD	6" POT	12"	16"	N	FULL DENSE POTS, NO SPOTS OR DAMAGE TO LEAVES, AVAILABLE FROM BULLIS BROMELIADS
SN	12	STRELITZIA NICOLAI	WHITE BIRD OF PARADISE	25 GAL	7' - 8'	5'	N	FULL, DENSE, MULTI STEMS
SR	5	STRELITZIA REGINAE	ORANGE BIRD OF PARADISE	15 GAL	4' OA	AS	N	FULL & THICK
VINE/ESPALEIR								
CTD	7	CLERODENDRUM THOMSONIAE 'DELECTUM'	RED BOWER	5 GAL	48"	2'	N	FULL TO BASE, MIN 3 STEMS PER POT, REMOVE FROM TRELIS AND ATTACH TO STRUCTURE
CJ22	3	TRACHELOSPERMUM JASMINOIDES	CONFEDERATE JASMINE	3 GAL	3'-4'	A.S.	N	FULL POTS, ATTACHED TO FENCE
TJ-CON	9	TRACHELOSPERMUM JASMINOIDES	CONFEDERATE JASMINE VINE	CONTAINERIZED	8'	3.5'	N	FULL TO BASE, ON TRELIS, FULL WITH RUNNERS, DRAPE OVER WALL OR FENCE

CODE	QTY	BOTANICAL NAME	COMMON NAME	CONTAINER	SIZE	SPACING	NATIVE	REMARKS
GROUND COVERS								
ARA	2,026	ARACHIS GLABRATA 'ECOTURF'	PERENNIAL PEANUT	1 GAL	4"	10"-12"	N	FULL POTS
ADM	363	ASPARAGUS DENISFLORUS 'MYERS'	FOXTAIL FERN	3 GAL	16"	18"	N	FULL & THICK
BH1	161	BOUGAINVILLEA 'HELEN JOHNSON'	HELEN JOHNSON BOUGAINVILLEA	3 GAL	20"	20"	N	FULL & THICK
BGH	46	BOUGAINVILLEA 'HELEN JOHNSON'	HELEN JOHNSON BOUGAINVILLEA	7 GAL	2' X 2'	A.S.	N	THICK AND FULL, SPECIMEN, DENSE FOLIAGE ONLY
BD	77	BOUGAINVILLEA 'MISS ALICE'	THORNLESS WHITE BOUGAINVILLEA	3 GAL	20"	20"	N	FULL DENSE POTS
CMG	334	CARISSA MACROCARPA 'EMERALD BLANKET'	EMERALD BLANKET NATAL PLUM	3 GAL	15" X 15"	2' OC	N	FULL & THICK
CH2	73	CHRYSOBALANUS ICACO 'HORIZONTAL'	HORIZONTAL COCOPLUM	3 GAL	1.5' X 1.5'	3' O.C.	Y	THICK AND FULL
CI	16	CHRYSOBALANUS ICACO 'RED TIP'	RED TIP COCOPLUM	7 GAL	2' X 2'	2.5' OC	Y	FULL & THICK
CLN	304	CLUSIA ROSEA 'NANA'	DWARF CLUSIA	3 GAL	1.5' X 1.5'	2' OC	Y	FULL & THICK
DI	291	DIETES IRIDIODEIDES	AFRICAN WHITE IRIS	3 GAL	1.5' X 1.5'	2' OC	N	NO BURN. FULL & THICK
EB	85	EVOLVULUS GLOMERATUS 'BLUE DAZE'	BRAZILIAN DWARF MORNING GLORY	3 GAL	12"-14"	16-18"	N	FULL DENSE POTS
FG	12	FICUS MICROCARPA 'GREEN ISLAND'	GREEN ISLAND FICUS	3 GAL	15" X 15"	2.5' O.C.	N	FULL & THICK
HO	57	HELIANTHUS DEBILIS	BEACH/DUNE SUNFLOWER	1 GAL	8"	10"	N	FULL, DENSE, SPREADING FOLIAGE
ISK	50	IXORA 'SUPER KING'	SUPER KING IXORA	CONTAINERIZED	2'-3'	2'-3'	N	FULL & THICK
IXY	233	IXORA X 'NORA GRANT'	IXORA 'NORA GRANT'	3 GAL	2' X 2'	2' OC	N	FULL & THICK
LSB	723	LIRIOPE MUSCARI 'SUPER BLUE'	SUPER BLUE LIRIOPE	1 GAL	10"-12"	10"-12"	N	FULL & THICK
OJ	14 5F	OPHIPOGON JAPONICUS	MONDO GRASS	1 GAL	4"	6"	N	FULL, DENSE POTS, NO BROWN TIPS
PEP	100	PEPEROMIA OBTUSIFOLIA	BABY RUBBER PLANT	1 GAL	6"	6"	N	SHADE GROWN
PMM	11	PHILODENDRON 'MOONLIGHT'	MOONLIGHT PHILODENDRON	1 GAL	12-14"	16"-18"	N	FULL DENSE POTS, NO BURN, AVAILABLE FROM EXCELSA GARDENS
PD2	26	PODOCARPUS MACROPHYLLUS	PODOCARPUS	7 GAL	3' X 3'	2' OC	N	FULL & THICK
PD4	81	PODOCARPUS MACROPHYLLUS 'DWARF PRINGLES'	DWARF PODOCARPUS	3 GAL	2.5' X 2.5'	2' O.C.	N	FULL & THICK
WF2	51	POLYPODIUM SCOLOPENDRIA	WART FERN	CONTAINERIZED	1' X 1'	12"	N	FULL, DENSE FOLIAGE TO BASE
SAV	114	SCHEFFLERA ARBORICOLA 'TRINETTE'	DWARF VARIEGATED SCHEFFLERA	3 GAL	1.5' X 1.5'	2' OC	N	FULL & THICK
SPL	6	SPATHOGLOTTIS PPLICATA 'PURPLE'	PURPLE GROUND ORCHID	3 GAL	18"	12"	N	FULL POTS, 16" O.C., PURPLE
TB-G	122	TIBOUCHINA GRANDIFOLIA	TIBOUCHINA GRANDIFOLIA	3 GAL	2' X 2'	24"	N	FULL DENSE FOLIAGE TO BASE
TRJ	142 5F	TRACHELOSPERMUM ASIATICUM 'SNOW & SUMMER MINIMA'	SMALL LEAF CONFEDERATE JASMINE	3 GAL	16"	16"	N	FULL, DENSE, INTACT FOLIAGE
TD	370	TRIPSACUM DACTYLOIDES	STANDARD FAKAHATCHEE GRASS	3 GAL	2' X 2'	2.5' OC	Y	FULL & THICK.
TF	417	TRIPSACUM FLORIDANA	DWARF FAKAHATCHEE GRASS	3 GAL	1' X 1'	2.5' OC	Y	FULL & THICK
ZF	116	ZAMIA FLORIDANA	COONTIE	3 GAL	2' X 2'	3' OC	Y	FULL & THICK

NOTE: 1.) ALL PLANT MATERIAL TO BE FLORIDA NO. 1 OR BETTER
 2.) (O) INDICATES DROUGHT TOLERANT PLANT MATERIAL
 3.) ALL TREE SPECIES AND THEIR RESPECTIVE LIMBS AND FOLIAGE THAT ENCR OACH UPON THE LINE-OF-SITE TRIANGLES SHALL BE MAINTAINED AT OR ABOVE SIX (6) FEET ABOVE THE ROADWAY INTERSECTION ELEVATION TO PROVIDE UNOBSTRUCTED CROSS-VISIBILITY.
 4.) TREE CROWN SPREAD SHALL BE 3-5 FEET MINIMUM AT TIME OF PLANTING.

SOD: ST. AUGUSTINE



Cotleur & Hearing

Landscape Architects
 Land Planners
 Environmental Consultants
 1934 Commerce Lane
 Suite 1
 Jupiter, Florida 33458
 561.747.6336 · Fax 747.1377
 www.cotleurhearing.com
 Lic# LC-C000239

MPUD PARCEL A

CATALINA PALMS

Port St. Lucie, Florida

PSLUSD # 11-681-A6
 PSL# P25-149
PARCEL A
AMENITY CLUBHOUSE
LANDSCAPE DETAILS

DESIGNED _____ PRP
 DRAWN _____ PRP/VEJ
 APPROVED _____ LAH
 JOB NUMBER _____ 20-0518
 DATE _____ 04-06-26
 REVISIONS _____