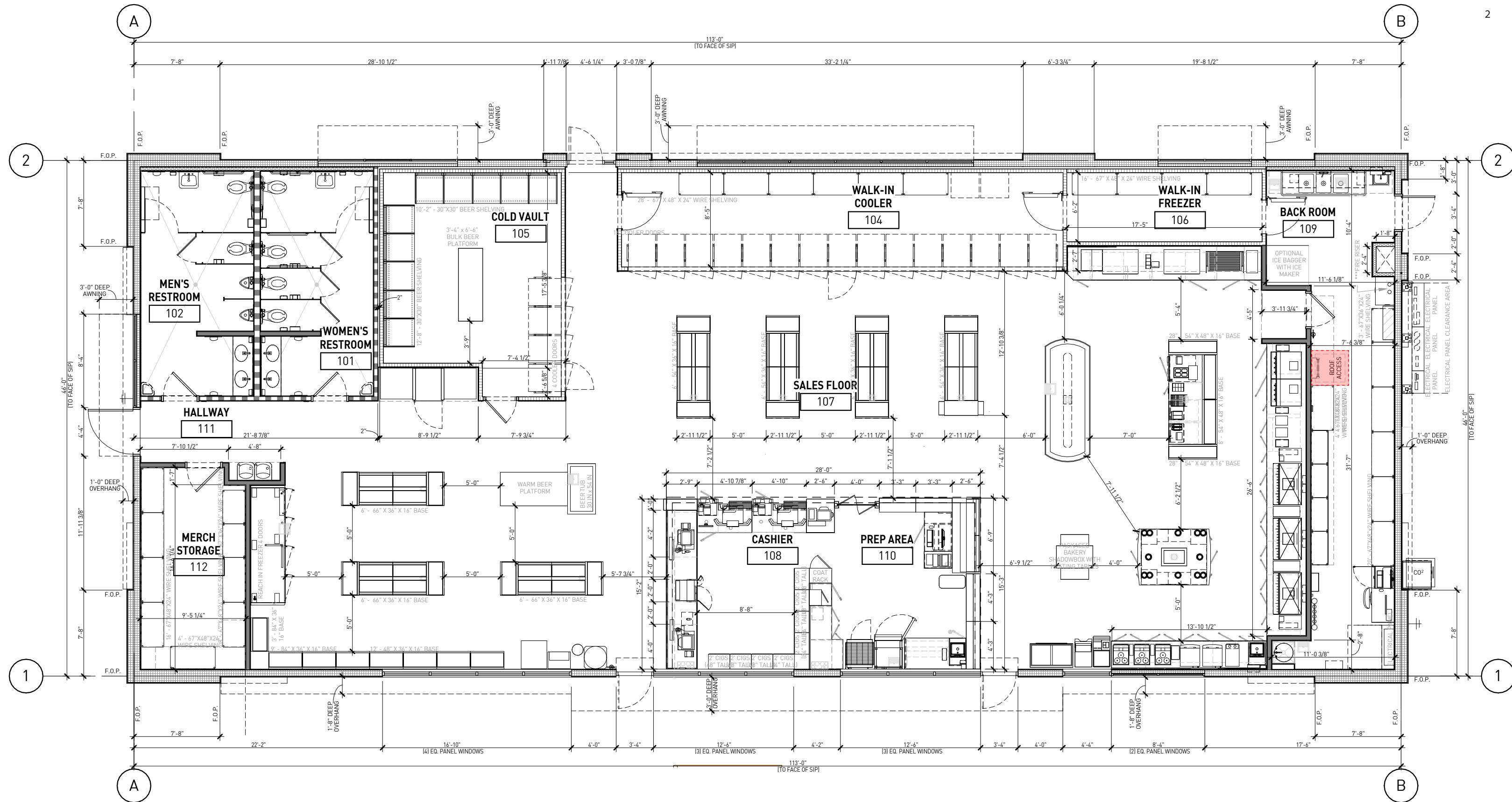


CIRCLE K

PORT ST. LUCIE (BECKER &
PORT ST. LUCIE), FL

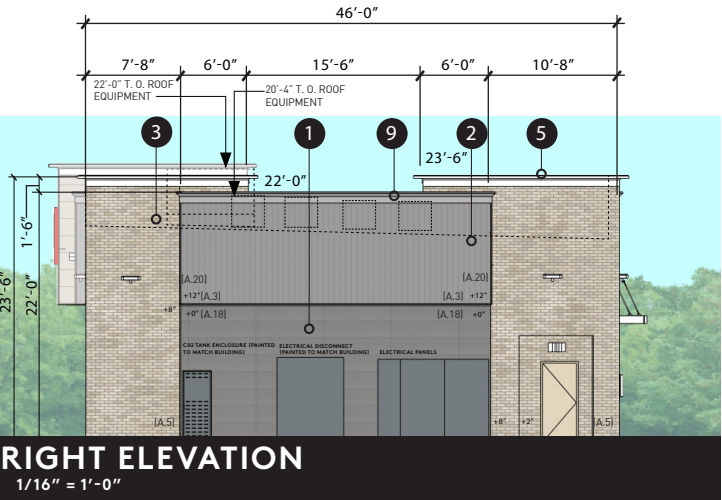
CONCEPT ELEVATIONS
10.29.2025

rdc.

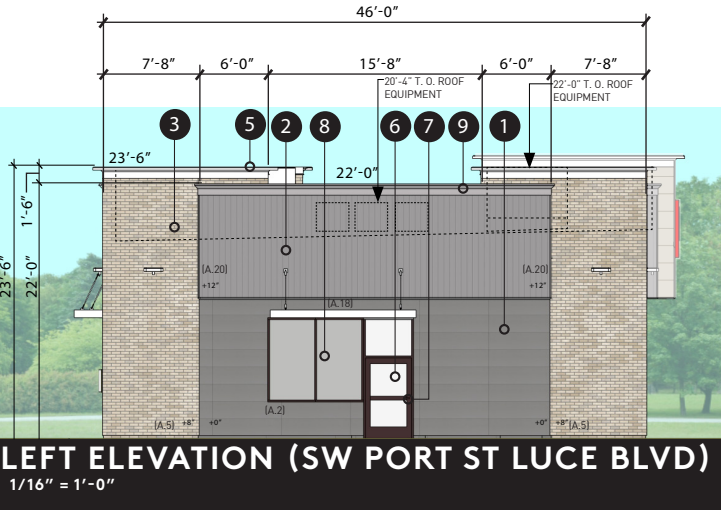


FLOOR PLAN (FOR REFERENCE ONLY)
1/8" = 1'-0"

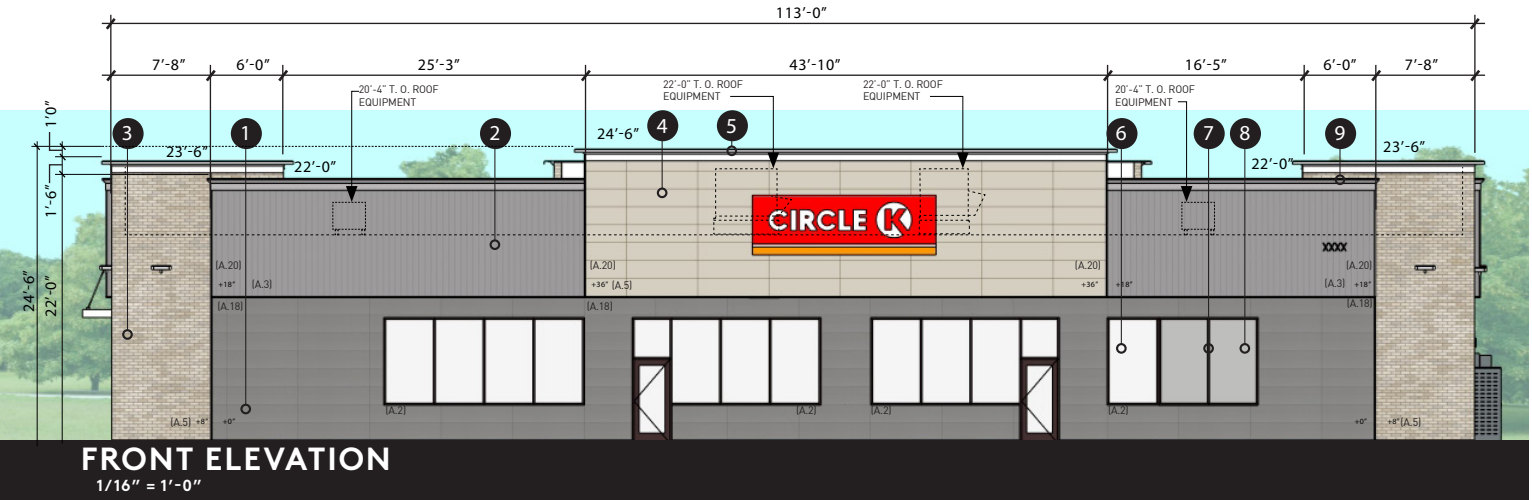
rdc. | CIRCLE K - PROJECT# 25206 PORT ST. LUCIE, FL - 10.29.2025



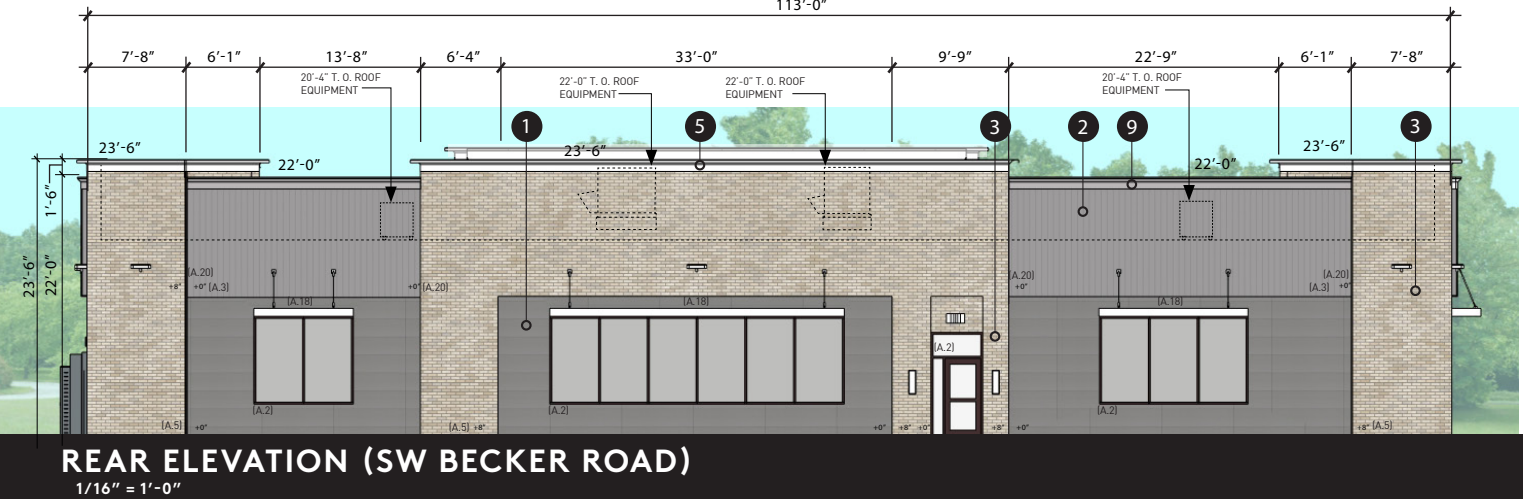
ARCHITECTURAL ELEMENTS
(A.3) - HORIZONTAL GROOVE LINE PATTERN BETWEEN 4" AND 12". (PROPOSE VERTICAL RIBBED PANEL)
(A.5) - TOWER.
(A.18) - CANOPY/AWNING
(A.20) - EXPRESSION LINES



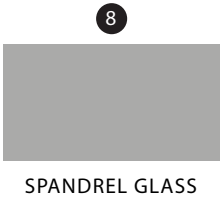
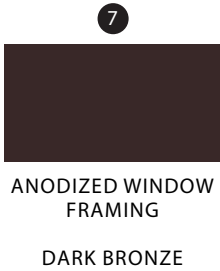
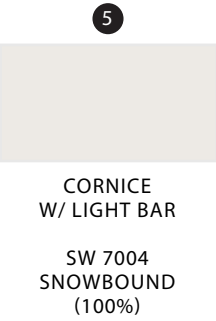
TRANSPARENCY - 30.43% (2 AND 8 FEET AFF)
ARCHITECTURAL ELEMENTS - (5)
(A.2) - VERTICAL, RECTANGULAR WINDOWS
(A.3) - HORIZONTAL GROOVE LINE PATTERN BETWEEN 4" AND 12". (PROPOSE VERTICAL RIBBED PANEL)
(A.5) - TOWER.
(A.18) - CANOPY/AWNING
(A.20) - EXPRESSION LINES



TRANSPARENCY - 53.98% (OF FRONT FACE)
ARCHITECTURAL ELEMENTS - (5)
(A.2) - VERTICAL, RECTANGULAR WINDOWS - AT LEAST 50% OF THE WINDOW AREA ON FRONT BUILDING FACE.
(A.3) - HORIZONTAL GROOVE LINE PATTERN BETWEEN 4" AND 12". (PROPOSE VERTICAL RIBBED PANEL)
(A.5) - TOWER.
(A.18) - CANOPY/AWNING
(A.20) - EXPRESSION LINES



TRANSPARENCY - 43.25% (2 AND 8 FEET AFF)
ARCHITECTURAL ELEMENTS - (5)
(A.2) - VERTICAL, RECTANGULAR WINDOWS
(A.3) - HORIZONTAL GROOVE LINE PATTERN BETWEEN 4" AND 12". (PROPOSE VERTICAL RIBBED PANEL)
(A.5) - TOWER.
(A.18) - CANOPY/AWNING
(A.20) - EXPRESSION LINES





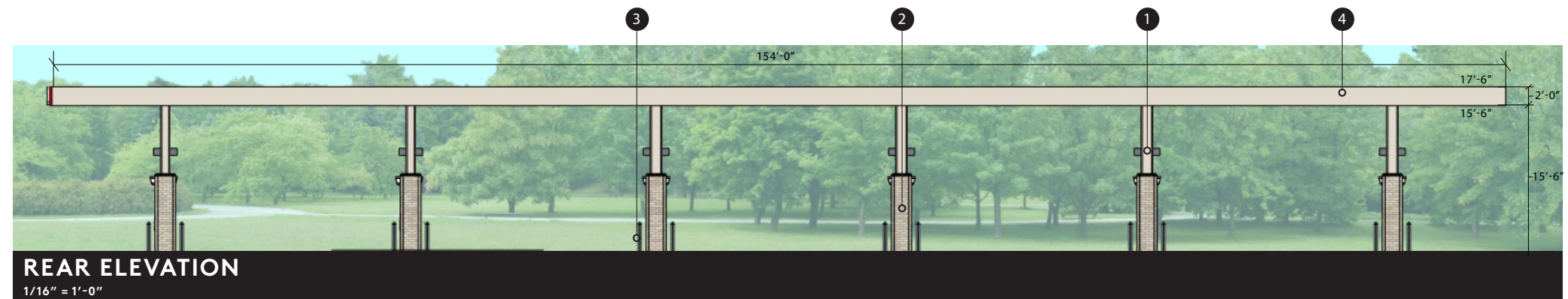
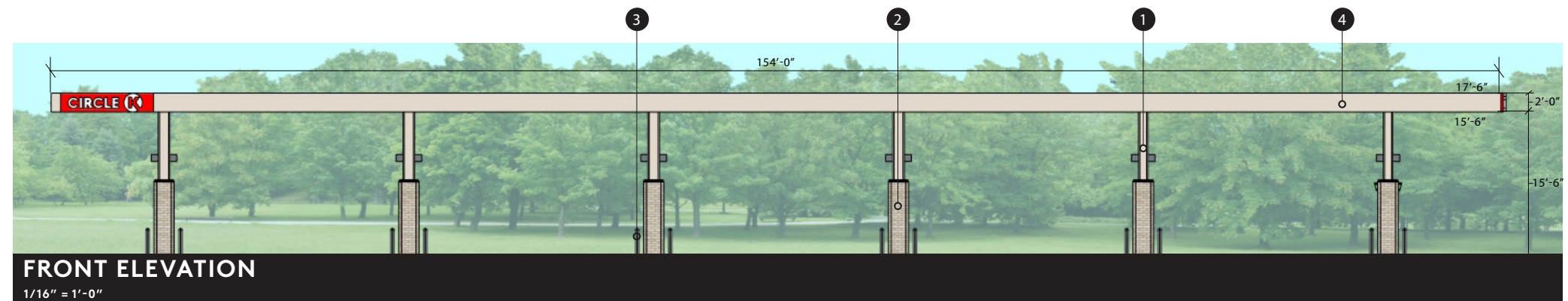
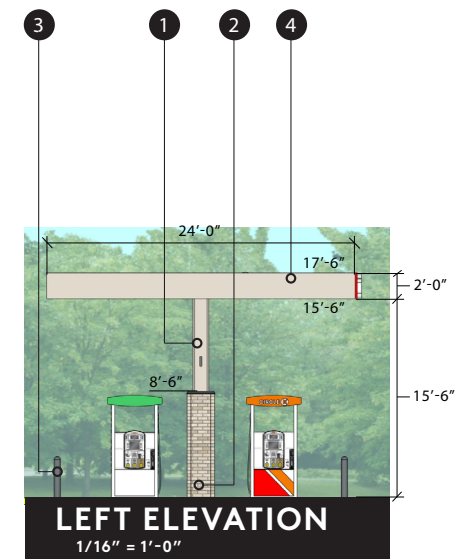
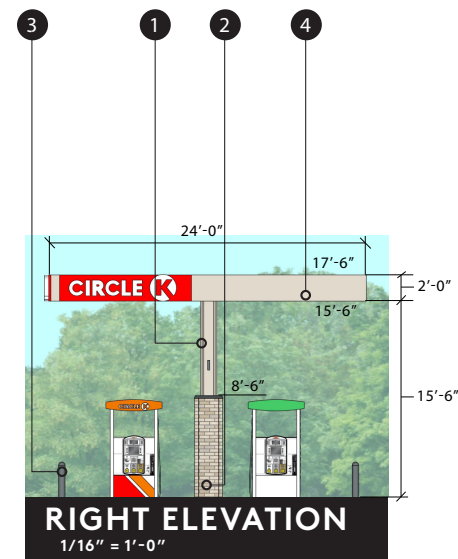
REPRESENTATION ONLY, NOT FOR CONSTRUCTION: ALL IMAGES SHOWN ARE A REPRESENTATION OF THE DESIGN INTENT AND MAY NOT PROTRAY THE EXACT SCALE, COLOR, MATERIALS OR CONSTRUCTION THAT COULD OCCUR DUE TO MATERIAL AVAILABILITY AND FINAL ARCHITECTURAL MODIFICATIONS



REPRESENTATION ONLY, NOT FOR CONSTRUCTION: ALL IMAGES SHOWN ARE A REPRESENTATION OF THE DESIGN INTENT AND MAY NOT PROTRAY THE EXACT SCALE, COLOR, MATERIALS OR CONSTRUCTION THAT COULD OCCUR DUE TO MATERIAL AVAILABILITY AND FINAL ARCHITECTURAL MODIFICATIONS



REPRESENTATION ONLY, NOT FOR CONSTRUCTION: ALL IMAGES SHOWN ARE A REPRESENTATION OF THE DESIGN INTENT AND MAY NOT PROTRAY THE EXACT SCALE, COLOR, MATERIALS OR CONSTRUCTION THAT COULD OCCUR DUE TO MATERIAL AVAILABILITY AND FINAL ARCHITECTURAL MODIFICATIONS



1
STEEL COLUMN
PAINT FINISH

SW 9166
DRIFT OF MIST

2
NICHHA
CANYON BRICK

SHALE BROWN

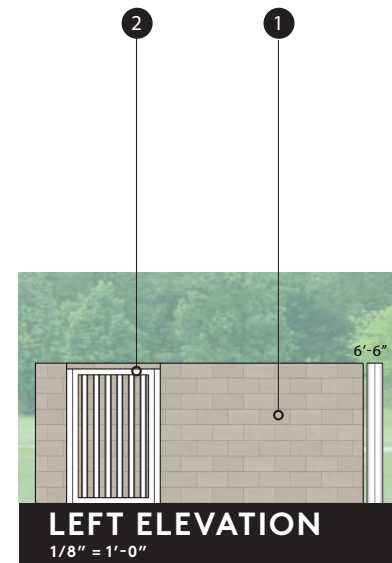
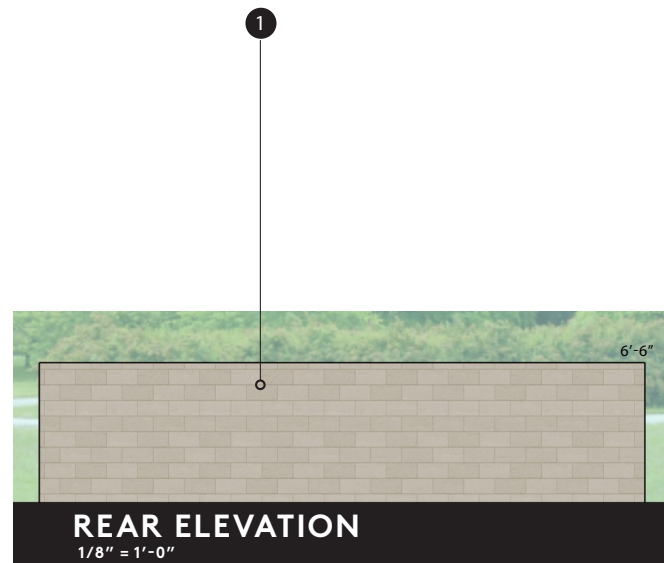
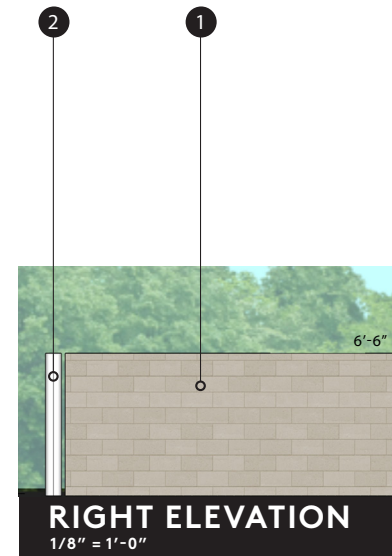
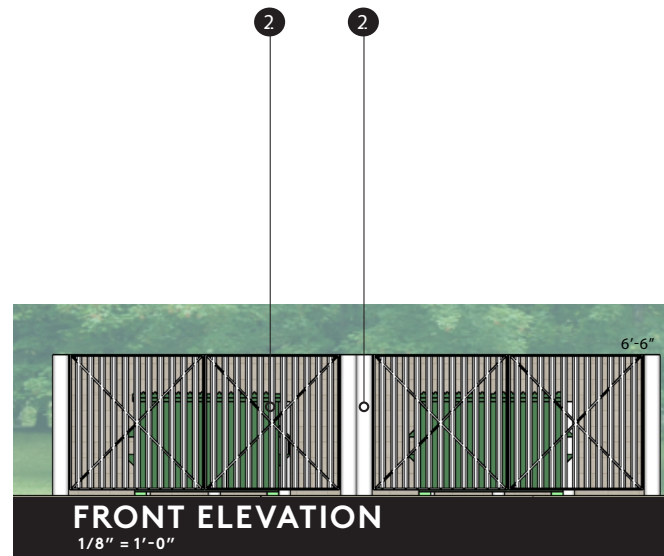
3
PVC BOLLARD
SLEEVE

SW 6236
GRAY'S HARBOR

4
ACM PANEL

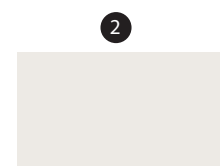
SW 9166
DRIFT OF MIST

ELEVATION DESIGN AND COLORS MAY NOT BE MODIFIED WITHOUT APPROVAL FROM THE CITY. CIVIL SENT OUT APPROVAL FOR CANOPY LENGTH.



ECHELON MASONRY
CMU - SPLIT FACE

DURANGO



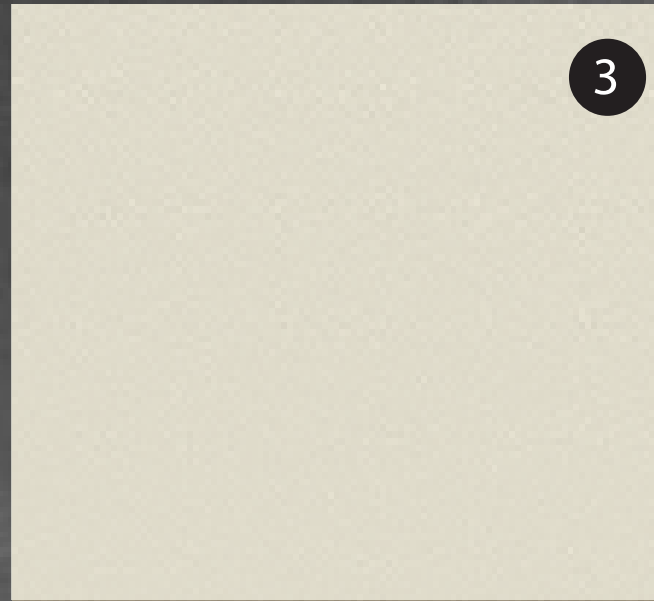
METAL GATE AND
BOLLARD

SW 7004
SNOWBOUND

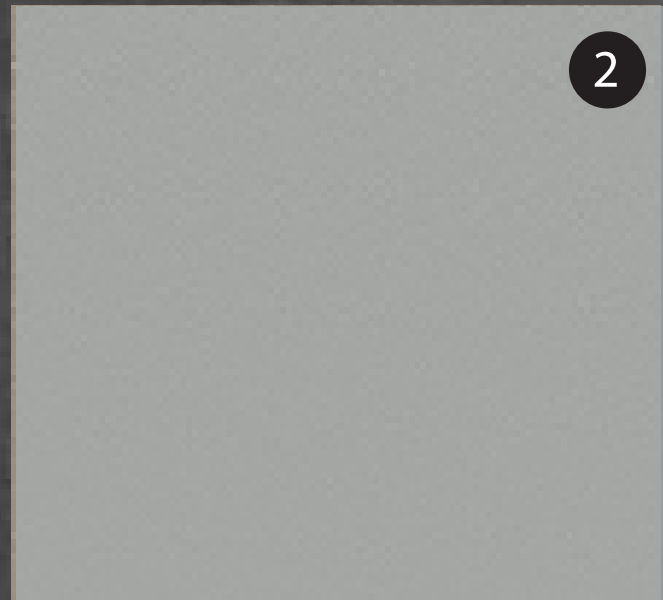
ELEVATION DESIGN AND COLORS MAY NOT BE MODIFIED WITHOUT APPROVAL FROM THE CITY.



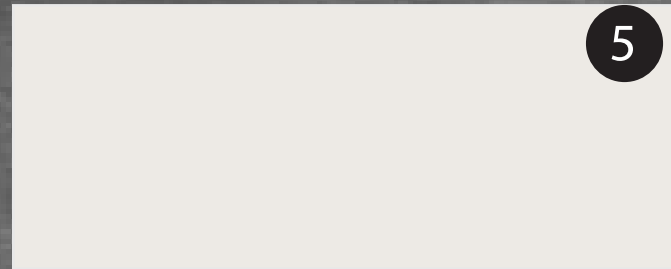
1



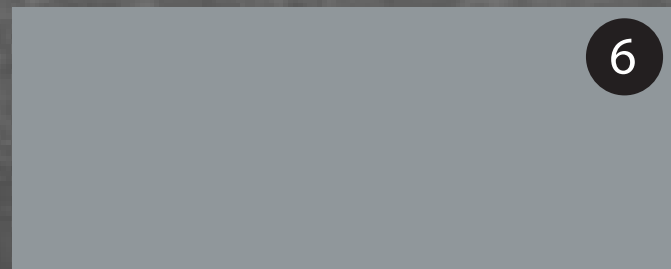
3



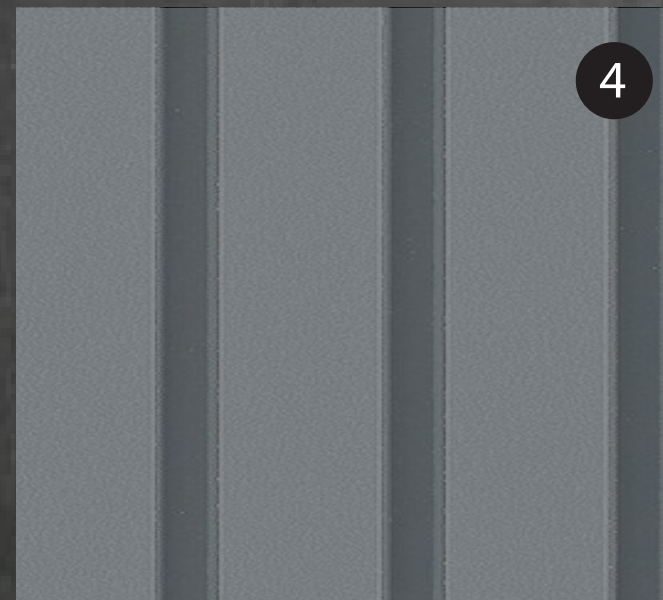
2



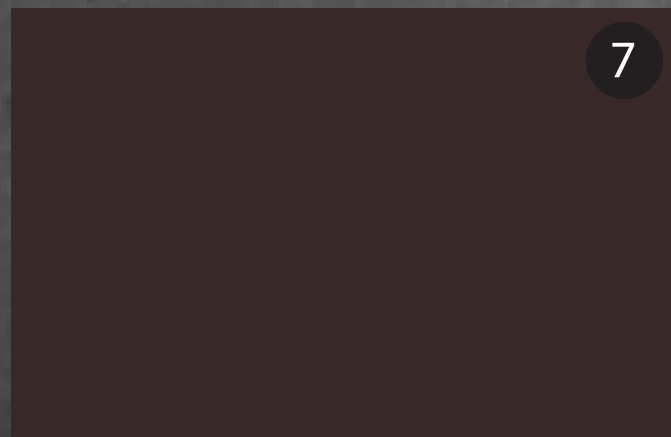
5



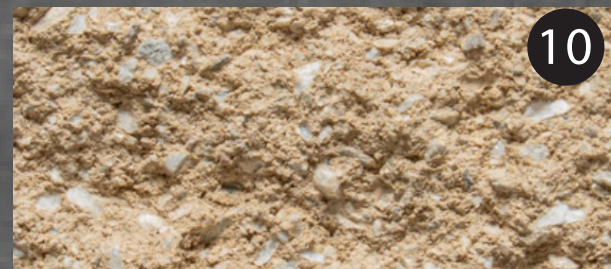
6



4



7



10



8



9

rdc.

Architecture | Planning | Interiors

**CIRCLE K
PECOS & SOSSAMAN
MESA, AZ**

MATERIAL LEGEND

- ① MANUFACTURER: NICHHA
PRODUCT: CANYON BRICK
COLOR: SHALE BROWN
- ② MANUFACTURER: NICHHA
PRODUCT: TUFF BLOCK
COLOR: SW6255 MORNING FOG
- ③ MANUFACTURER: NICHHA
PRODUCT: TUFF BLOCK
COLOR: SW9166 DRIFT OF MIST
- ④ MANUFACTURER: NICHHA
PRODUCT: RIBBED METAL PANEL
COLOR: SW7673 STEELY GRAY
- ⑤ CORNICE W/ LINEAR LIGHT BAR
COLOR: SW7004 SNOWBOUND
- ⑥ CORNICE
COLOR: SW7673 STEELY GRAY
- ⑦ ANODIZED WINDOW FRAMING
DARK BRONZE
- ⑧ INSULATED CLEAR GLASS
- ⑨ SPANDREL GLASS
- ⑩ MANUFACTURER: ECHELON MASONRY
PRODUCT: CMU-SPLIT FACE
COLOR: DURANGO