

**Landscape Legend:**

Qty	Symbol	Tag	Species
2	AR	AR	Red Maple <i>Acer rubrum</i> , FG, 12' Ht
21	CS	CS	Glaucous Cassia <i>Cassia surrattensis</i> , FG, 8' ht
32	LI1	LI1	White Crape Myrtle <i>Lagerstromia indica 'Natchez'</i> , 12' ht, 2.5" cal
74	LI2	LI2	Pink Crape Myrtle <i>Lagerstromia indica 'Sioux'</i> , 12' ht, 2.5" cal
41	LI3	LI3	Coral Red Crape Myrtle <i>Lagerstromia indica 'Tuscarora'</i> , 12' ht, 2.5" cal
18	LL2	LL2	Tree Ligustrum <i>Ligustrum lucidum</i> , 12' Ht
45	KE	KE	Golden Rain Tree <i>Kolreuteria elegans</i> , FG, 12' Ht
11	MG	MG	Southern Magnolia <i>Magnolia grandiflora</i> , FG, 12' Ht
83	QV	QV	Live Oak, <i>Quercus virginiana</i> , 12' ht, 2.5" cal
6	TD	TD	Bald Cypress, <i>Taxodium distichum</i> , 12' ht, 2.5" cal
87	SP	SP	Cabbage Palm <i>Sabal palmetto</i> , 10' CT
33	WR	WR	Mexican Fan Palm <i>Washingtonia robusta</i> , 8' CT
1640	JAS	JAS	Wax Jasmine <i>Jasminum volubile</i> , 1 gal, 12"x12", 24" o.c.
464	JUN	JUN	Shore Juniper <i>Juniperus</i> , 1 gal, 12"x12", 24" o.c.
2058	HAM	HAM	Dwarf Firebush <i>Hamelis macarantha</i> , 3 gal, 18"OA, 24" o.c.
178	MYR	MYR	Wax Myrtle <i>Myrica cerifera</i> , 3 gal, 24"OA, 48" o.c.
594	NER	NER	Dwarf Oleander <i>Nerium oleander 'Ice Pink'</i> , 3 gal, 18"x18", 24" o.c.
305	POD	POD	Japanese Yew <i>Podocarpus japonicus</i> , 3 gal, 18"x18", 24" o.c.
1668	RHA	RHA	Indian Hawthorn <i>Rhaphiolepis indica</i> , 3 Gal, 12" ht, 24" o.c.
207	VIO	VIO	Sweet Viburnum <i>Viburnum odoratissimum</i> , 3 Gal, 30"x24", 36" o.c.
744	VIB	VIB	Sandankwa Viburnum <i>Viburnum suspensum</i> , 3 Gal, 24"x24", 24" o.c.
2990	EUP	EUP	Dwarf Crown of Thorns <i>Euphorbia milli 'Little Red'</i> , 1 gal, 9"OA, 12" o.c.
721	FIC	FIC	

**Landscape Irrigation Notes:**  
 - All areas to receive 100% irrigation coverage  
 - All zones to be automatically controlled.  
 - Clocks to have automatic "Rain sensors".  
 - Water source may be potable or well and shall be determined at time of building permit application  
 - The irrigation system will be designed to accept reclaimed wastewater once it becomes available to the property

**Landscape Data (Trees):**

**Exterior Landscaping:**  
 1,844lf of PL along other Properties (excluding 60lf of Driveways):  
 Total Exterior Trees required: 62 trees

**Interior Landscaping:**  
 Interior Landscape Islands trees required: 126 trees  
 Landscaping along building perimeter:  
 Retail B: 1882lf of perimeter @ 1 tree/30lf = 63 trees  
 Retail C: 438lf of perimeter @ 1 tree/30lf = 15 trees  
 Total Interior Trees required: 226 trees  
 Total Trees required: 288 trees  
 Total Trees provided: 308 trees

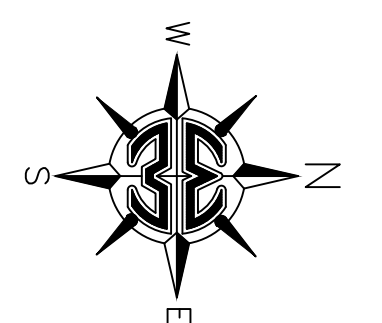
**Landscape Data (Shrubs):**

**Exterior Landscaping:**  
 1,844lf of PL along other Properties (excluding 60lf of Driveways):  
 Total Exterior shrubs required: 922 shrubs  
 Total Exterior Shrubs provided: 922 shrubs

**Interior Landscaping:**  
 Landscaping along building perimeter:  
 Retail B: 1882lf of perimeter @ 1 shrub/1.5lf = 1,255 shrubs  
 Retail C: 1,117lf of perimeter @ 1 shrub/1.5lf = 745 trees  
 Total Interior shrubs required: 2,000 shrubs  
 Total Interior Shrubs provided: 2,000 shrubs  
 Total Shrubs required: 2922 shrubs  
 Total Shrubs provided: 2922 shrubs

**General Notes:**

- All landscaping within (PSLUSD) utility easements shall comply with Chapter 153 of the City's Code of Ordinances and PSLUSD Utility Standards, Details and Policies.
- No landscaping shall be planted in such a manner as to adversely affect utility installation, operation and maintenance.
- Trees shall not be planted within 10 feet of any PSLUSD mains or appurtenances.
- No landscaping other than sod grasses shall be planted within a 5' radius maintenance area of an PSLUD appurtenance such as water meters, backflow devices, fire hydrants, sanitary sewer cleanouts, and manholes, air release valves, etc.
- All landscape material to be Florida No. 1
- All sod areas to be St. Augustine 'Floritam' Sod



PSLUD#  
 City of Port St. Lucie Project No: P17-057-A2

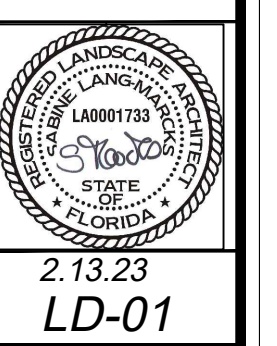
Landscape Design Associates  
 25110 NW 182nd Ave  
 High Springs, FL 32643  
 772-971-6060 ph, smarcks@landscapedesign.com

Scale: 1" = 80'  
 Drawn by: SM  
 Checked by: SM  
 CADD No.: 22-114 (p.dwg)  
 Date: 2.12.23

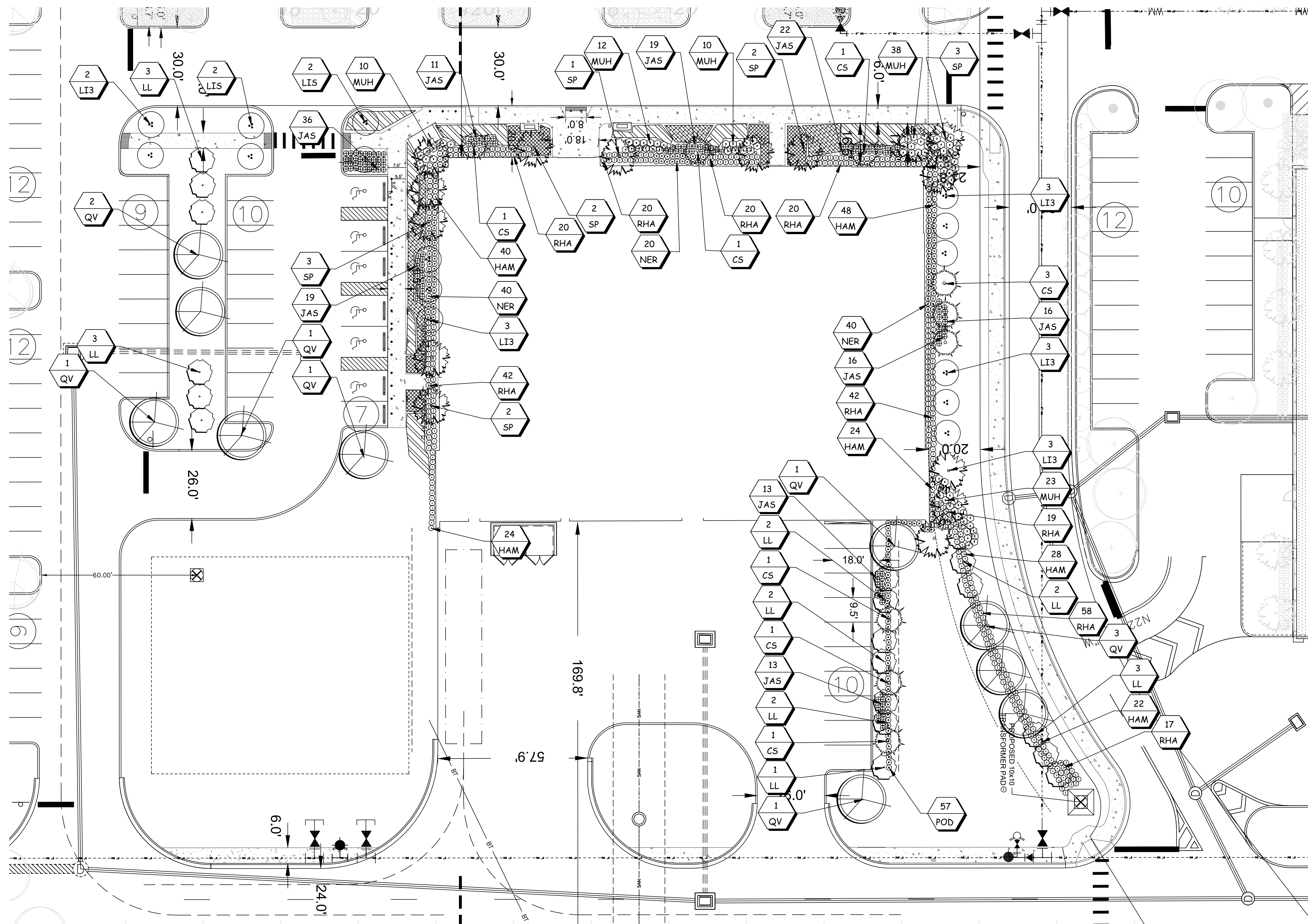
Revisions	Date	Comments

© 2018 THE PLANS SHOWN HEREIN ARE THE PROPERTY OF LANDSCAPE DESIGN ASSOCIATES AND SHALL BE USED ONLY FOR THE PROJECT AND SITE SPECIFICALLY IDENTIFIED HEREON. NO PART IS TO BE REPRODUCED OR TRANSMITTED IN ANY FORM OR BY ANY MEANS, WITHOUT CONSENT.

**Gatin Plaza Phase 1 - Dave & Buster's**  
 City of Port St. Lucie  
**Overall Landscape Plan - Amendment**



2.13.23  
 LD-01

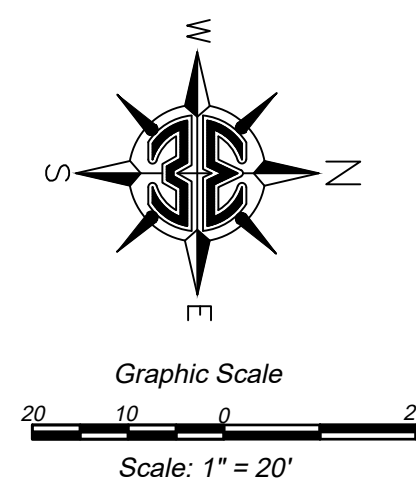


**Landscape Legend:**

Qty	Symbol	Tag	Species
19		LL	Tree Ligustrum <i>Ligustrum lucidum</i> , FG, 12' Ht, 5' Spr, Multi
9		CS	Glaucous Cassia <i>Cassia surrattensis</i> , FG, 8' ht
15		LI3	Coral Red Crape Myrtle <i>Lagerstromia indica 'Tuscarora'</i> , 12' ht, 5' Spr, 2.5" cal, Multi
10		QV	Live Oak, <i>Quercus virginiana</i> , 12' ht, 5' Spr, 2.5" cal
15		SP	Cabbage Palm <i>Sabal palmetto</i> , 10' CT, matched
186		HAM	Dwarf Firebush <i>Hamelis macarantha</i> , 3 gal, 18"OA, 24" o.c.
149		JAS	Wax Jasmine <i>Jasminum volubile</i> , 3 gal, 18"OA, 24" o.c.
93		MUH	Muhly Grass <i>Muhlenbergia capillaris</i> , 3 gal, 36" o.c.
100		NER	Dwarf Oleander <i>Nerium oleander 'Ice'</i> , 3 gal, 18"OA, 24" o.c.
259		RHA	Indian Hawthorn <i>Rhaphiolepis indica</i> , 3 Gal, 12" ht, 24" o.c.
57		POD	Podocarpus <i>Podocarpus macrophyllus</i> , 7 Gal, 36" ht, 24" o.c.
254		FIC	Green Island Ficus <i>Ficus macrocarpa 'Green Island'</i> , 1 gal, 6"x10", 24" o.c.
121		LAN	Purple & White Trailing Lantana <i>Lantana montevidensis &amp; alba</i> , 1 gal, 24" o.c., even mix
104		TRF	Dwarf Fakahatchee Grass <i>Tripsacum floridana</i> , 3 gal, 24" o.c.

**General Notes:**

1. All landscaping within (PSLUSD) utility easements shall comply with Chapter 153 of the City's Code of Ordinances and PSLUSD Utility Standards, Details and Policies.
2. No landscaping shall be planted in such a manner as to adversely affect utility installation, operation and maintenance.
3. Trees shall not be planted within 10 feet of any PSLUSD mains or appurtenances.
4. No landscaping other than sod grasses shall be planted with in a 5' radius maintenance area of an PSLUD appurtenance such as water meters, backflow devices, fire hydrants, sanitary sewer cleanouts, and manholes, air release valves, etc.
5. All landscape material to be Florida No. 1
6. All sod areas to be St. Augustine 'Floritam' Sod



PSLUD#  
City of Port St. Lucie Project No: P17-057-A2

Landscape Design Associates  
25110 NW 182nd Ave  
High Springs, FL 32643  
772-971-6060 ph, smarcks@landscapeda.com

Scale: 1" = 20'  
Drawn by: SM  
Checked by: SM  
CADD No.: 22-114 lp.dwg  
Date: 2.13.23

© 2011 THESE PLANS  
SHOWN HEREIN ARE THE  
PROPERTY OF LANDSCAPE  
DESIGN ASSOCIATES AND  
LANDSCAPE DESIGN  
ASSOCIATES AND  
ENGINEERS OF FLORIDA  
NO PART IS TO BE REPRODUCED  
OR TRANSMITTED IN ANY FORM OR BY ANY  
MEANS, WITHOUT CONSENT.

**Gatlin Plaza Phase 1 - Dave & Buster's**  
City of Port St. Lucie  
**Landscape Plan - Amendment**

