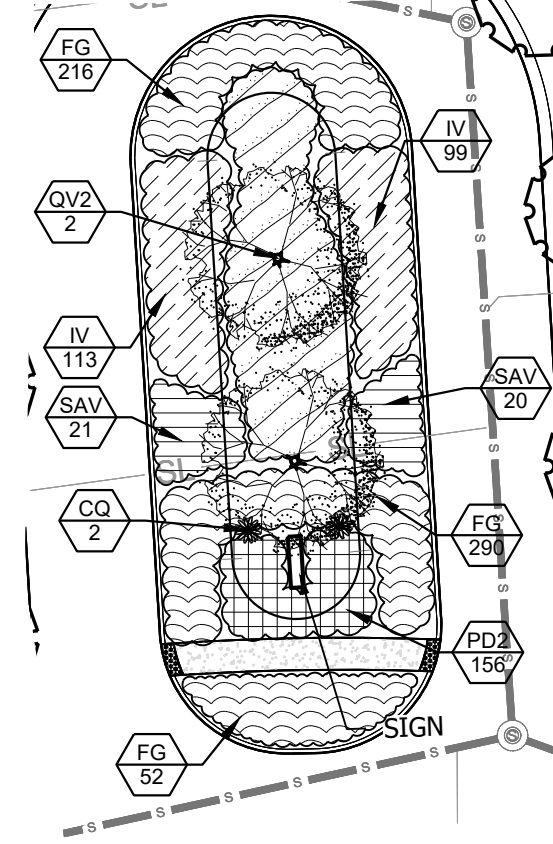


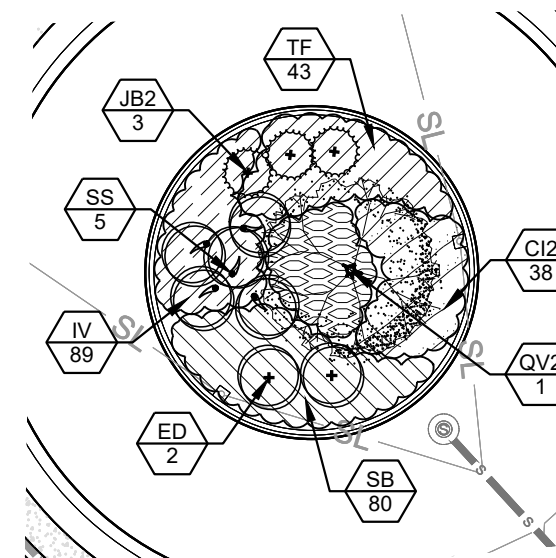
### MEDIAN 1

SCALE 1"=30'-0"



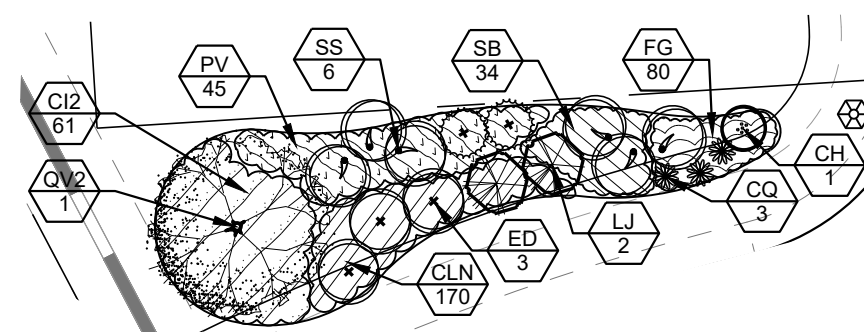
### CUL-DE-SAC 1

SCALE 1"=30'-0"



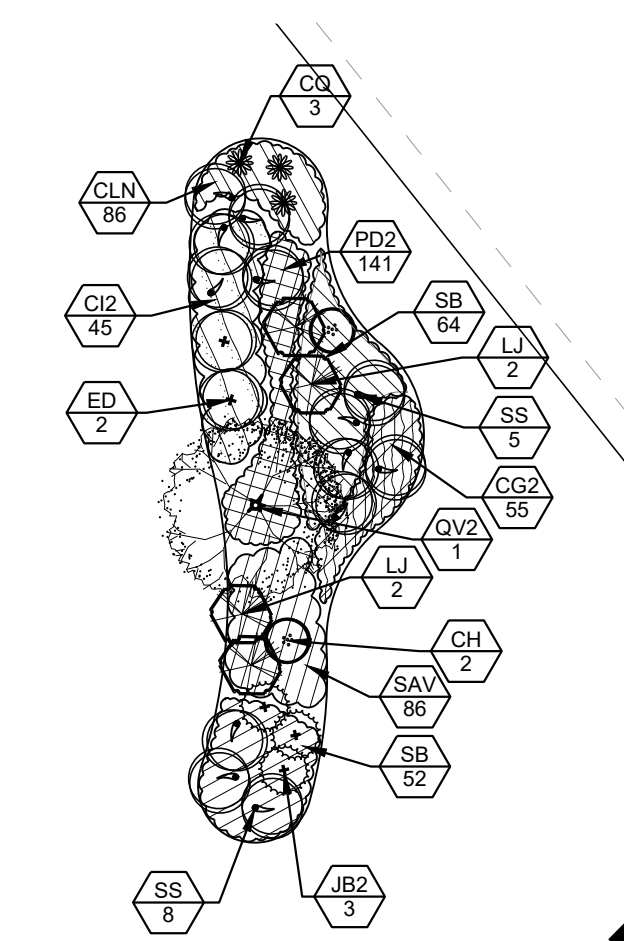
### COMMON AREA 7

SCALE 1"=30'-0"



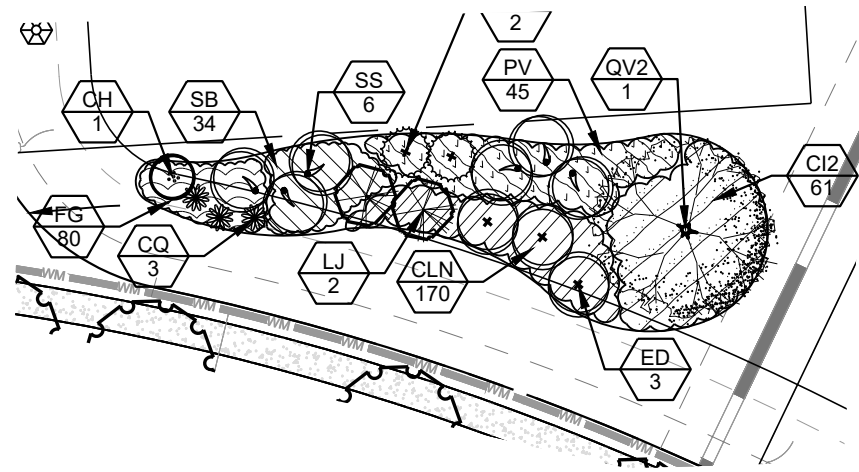
### COMMON AREA 12

SCALE 1"=30'-0"



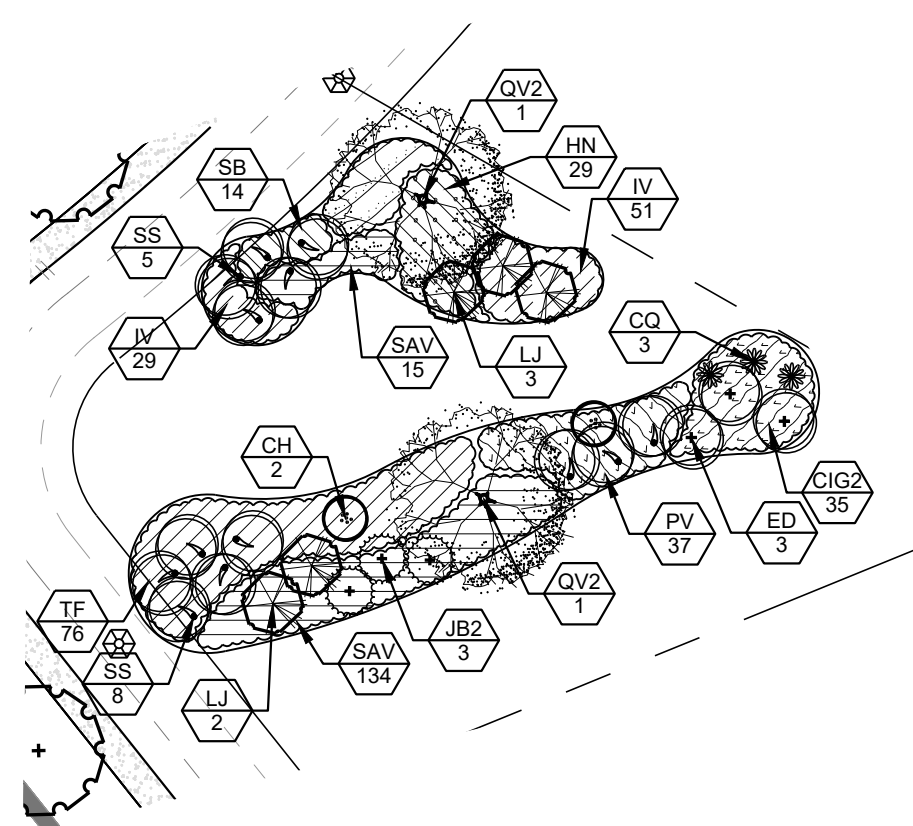
### COMMON AREA 6

SCALE 1"=30'-0"



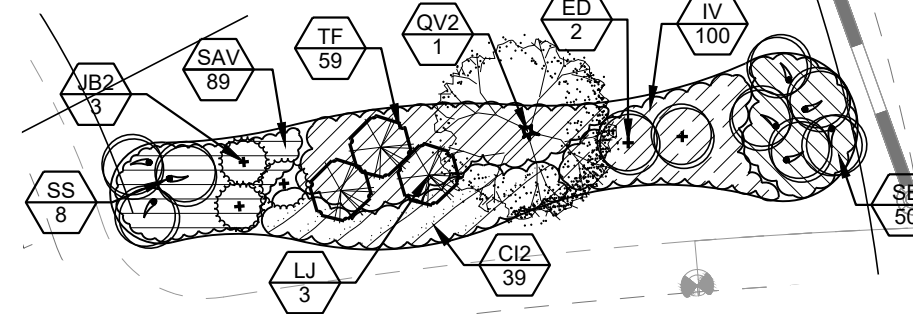
### COMMON AREA 13

SCALE 1"=30'-0"



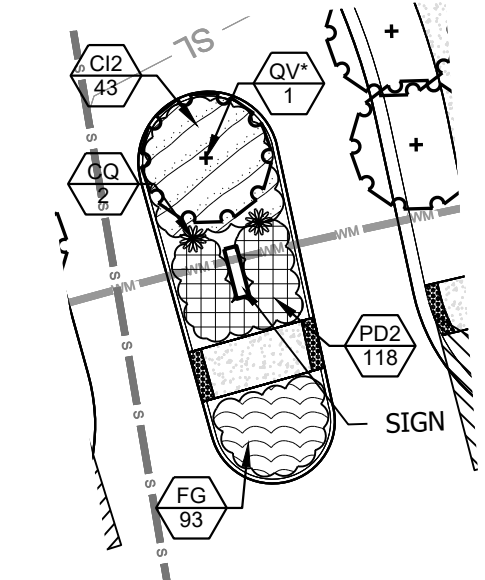
### COMMON AREA 2

SCALE 1"=30'-0"

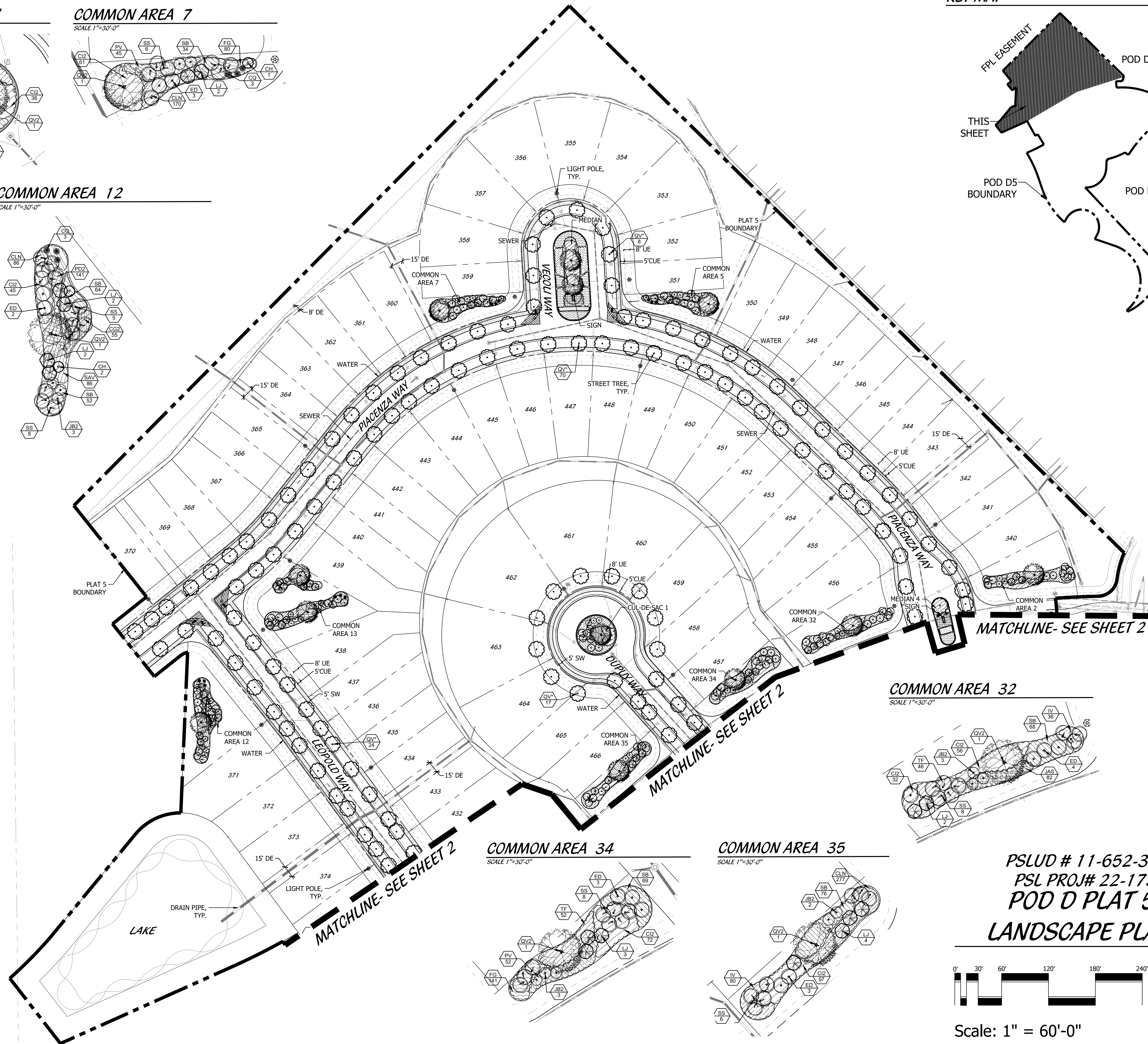
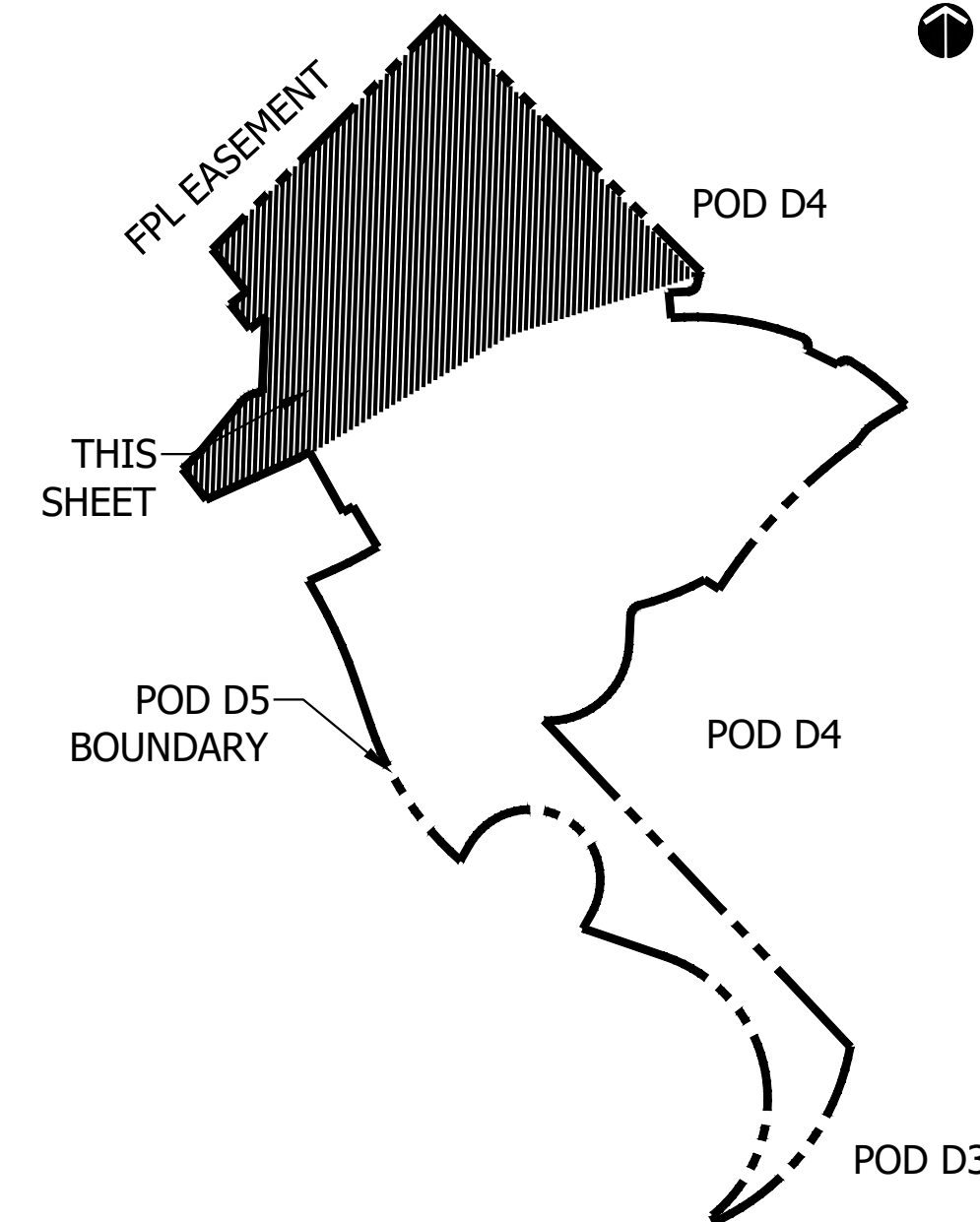


### MEDIAN 4

SCALE 1"=30'-0"

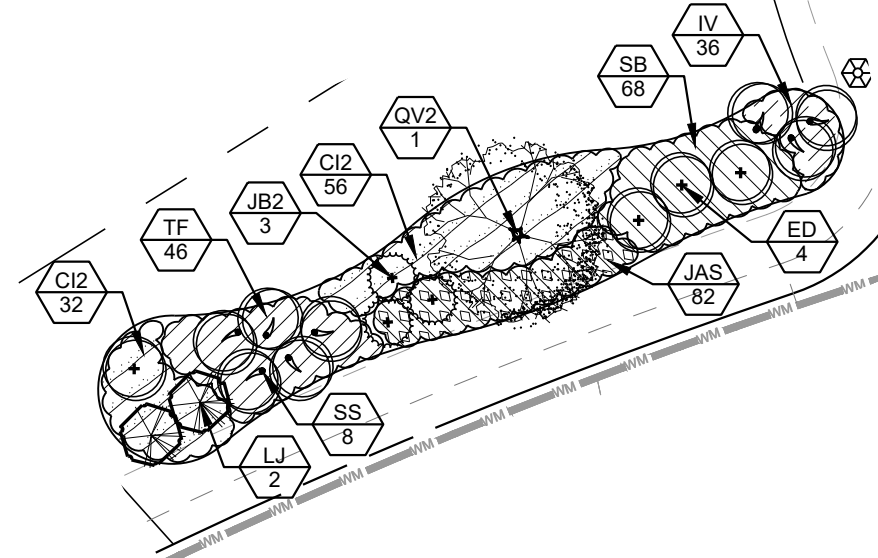


### KEY MAP



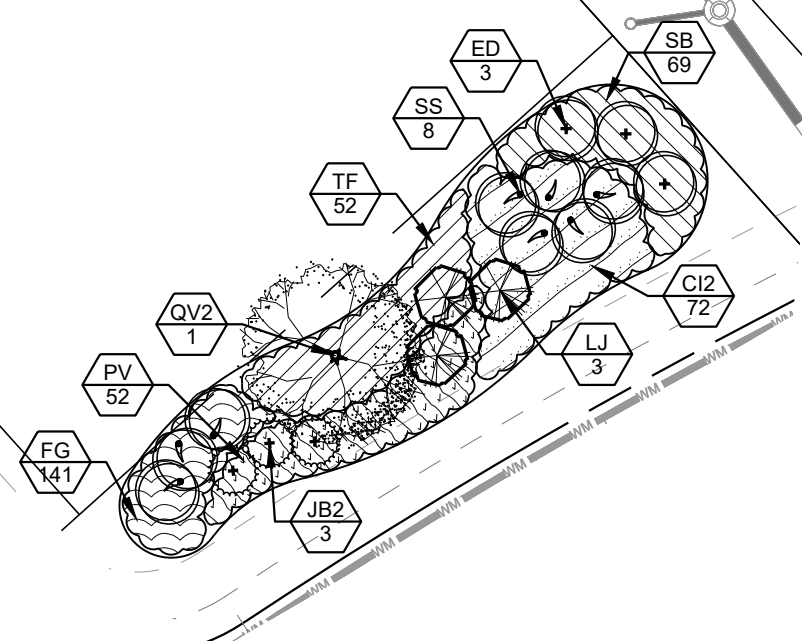
### COMMON AREA 32

SCALE 1"=30'-0"



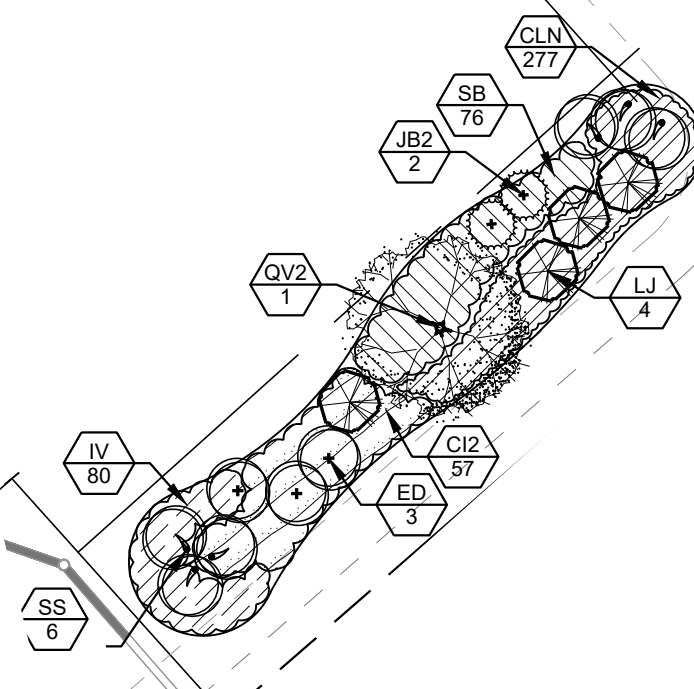
### COMMON AREA 34

SCALE 1"=30'-0"



### COMMON AREA 35

SCALE 1"=30'-0"

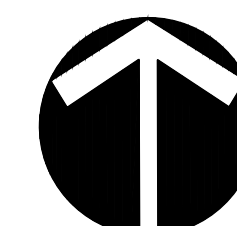
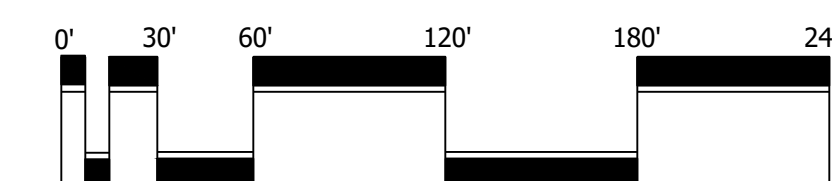


PSLUD # 11-652-33D

PSL PROJ# 22-173

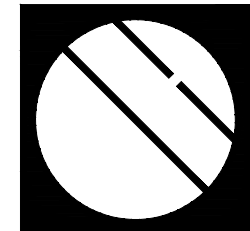
POD D PLAT 5

LANDSCAPE PLAN



Scale: 1" = 60'-0"

North



**Cotleur & Hearing**

Landscape Architects  
Land Planners  
Environmental Consultants

1934 Commerce Lane  
Suite 1  
Jupiter, Florida 33458  
561.747.6336 • Fax 747.1377  
www.cotleurhearing.com  
Lic# LC-C000239

**VERANO SOUTH**  
Kolter Homes  
Port St. Lucie, Florida

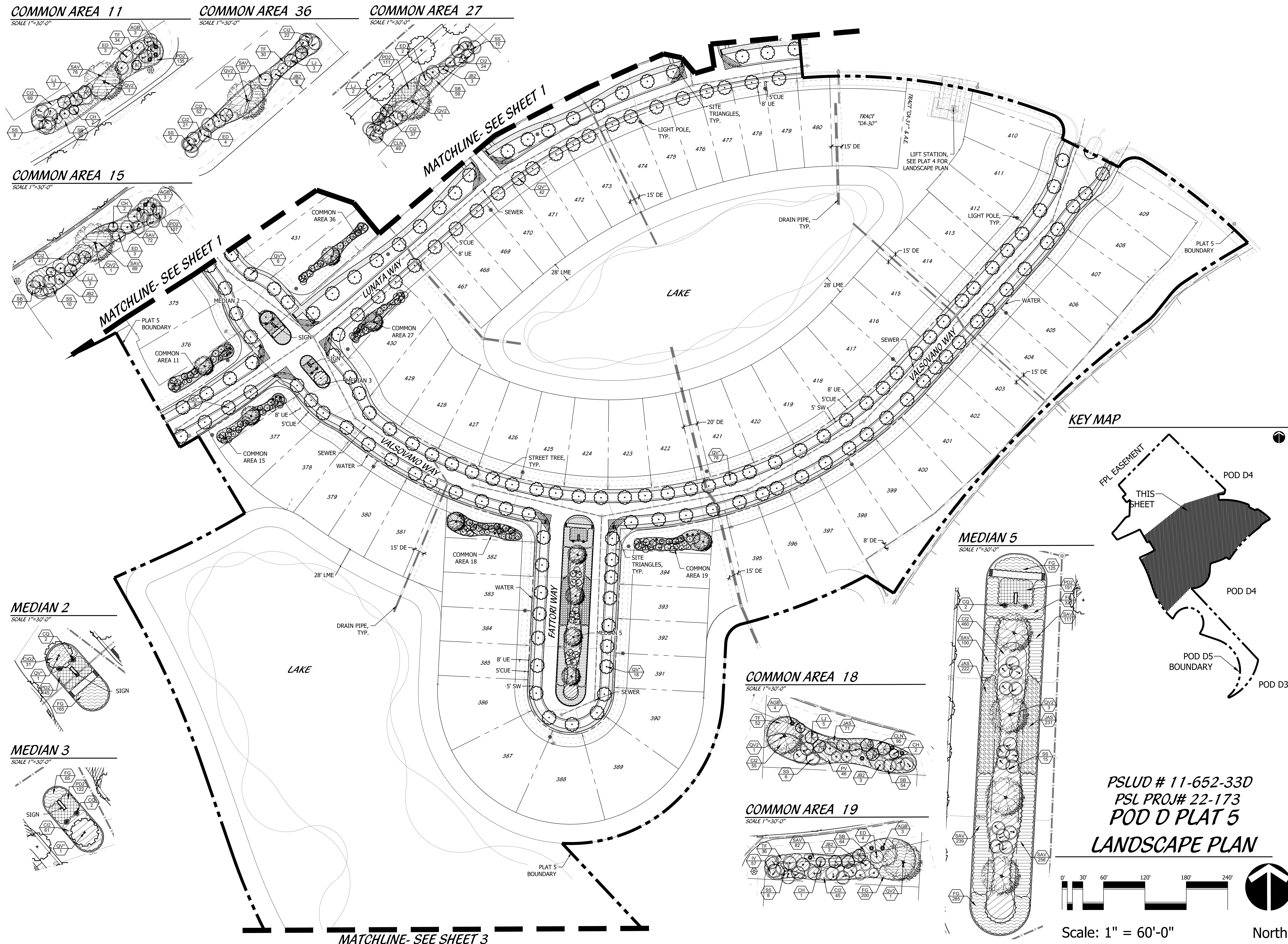
DESIGNED	DTS
DRAWN	LAH
DATE	05-18-22
REVISIONS	07-05-22
	08-15-22
	09-27-22

SHEET 1 OF 4  
© COTLEUR & HEARING, INC.  
These drawings are the property of the architect and are not to be used for extensions or on other projects except by agreement in writing with the architect. Immediately report any discrepancies to the architect.

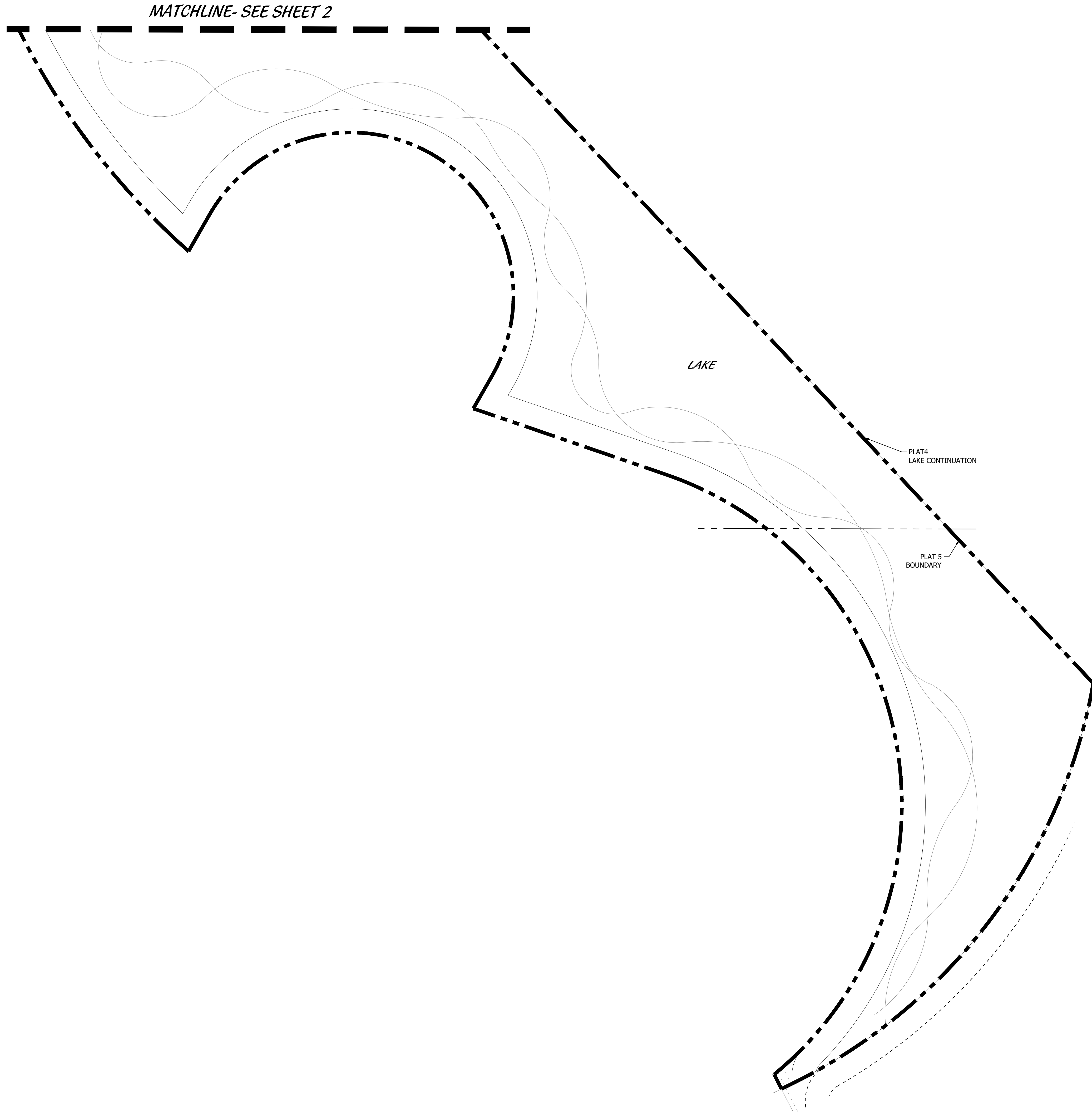


**VERANO SOUTH**  
Kolter Homes  
Port St. Lucie, Florida

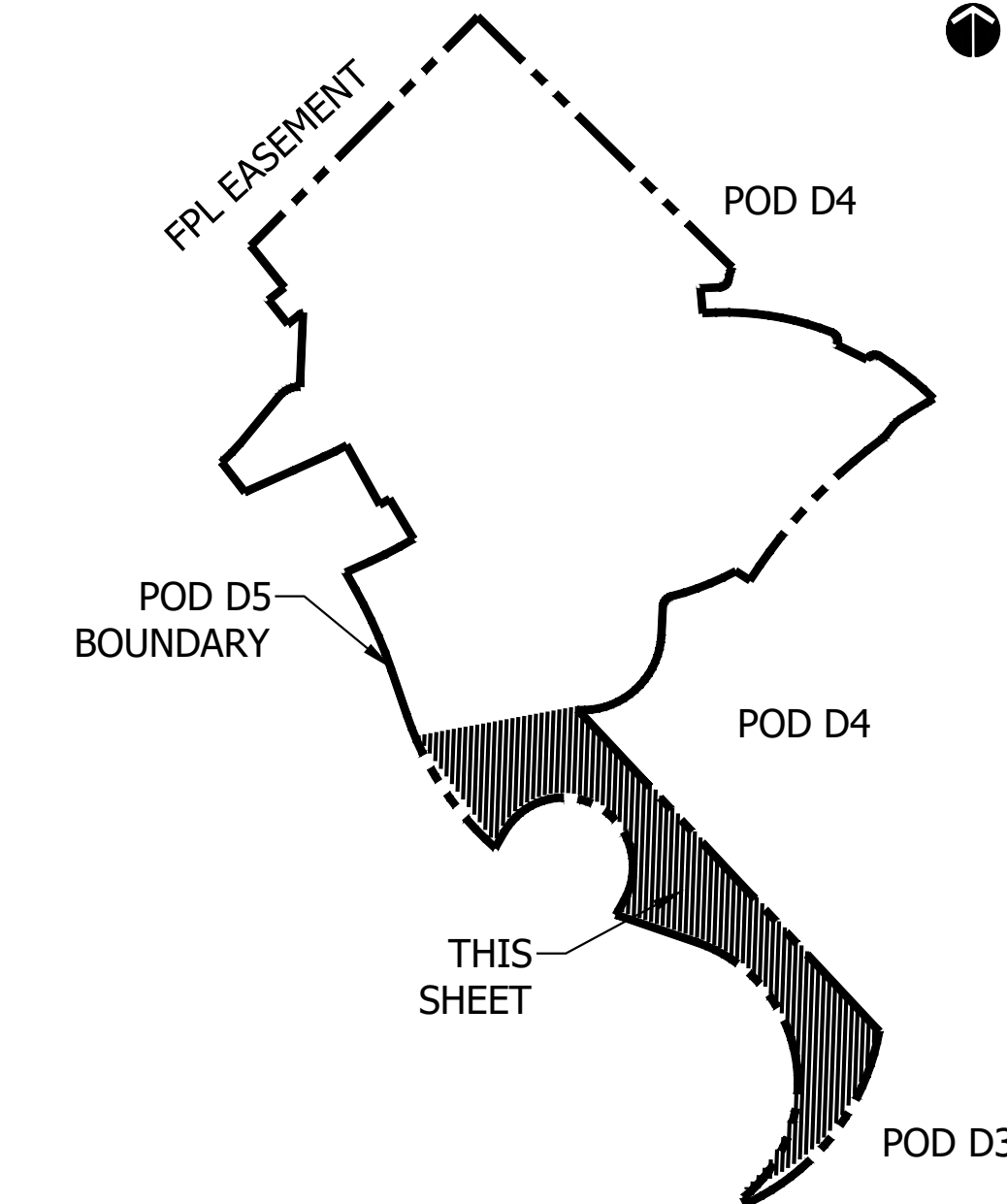
DESIGNED _____	DTS
DRAWN _____	LAH
DATE _____	05-18-22
REVISIONS _____	07-05-22
	08-15-22
	09-27-22



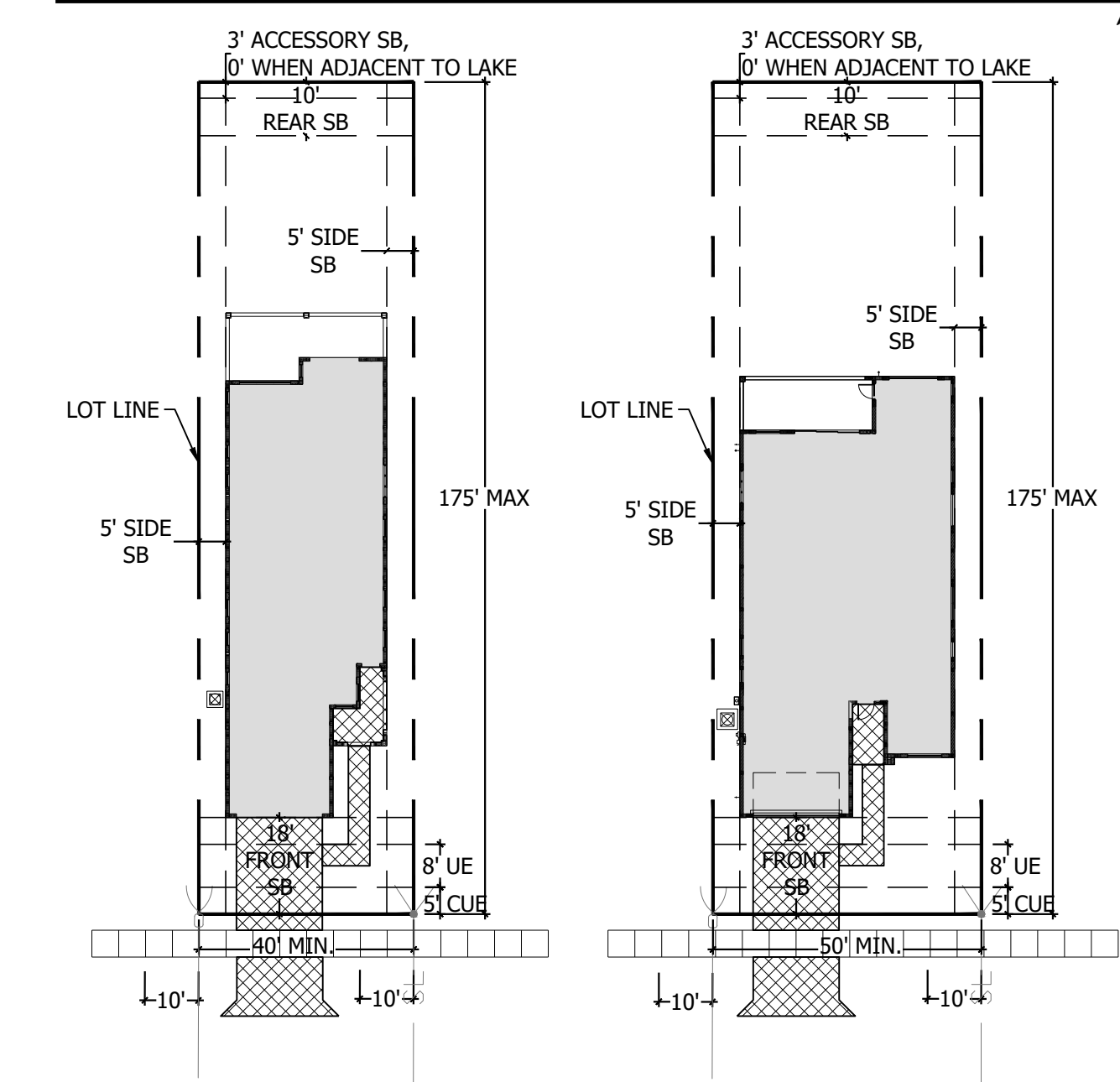




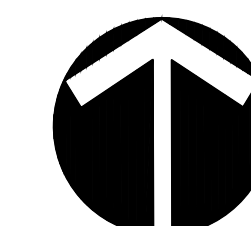
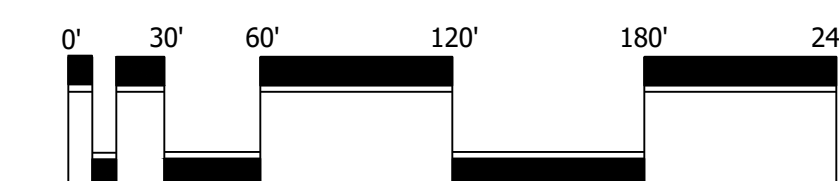
KEY MAP



TYPICAL DRIVEWAY LAYOUTS

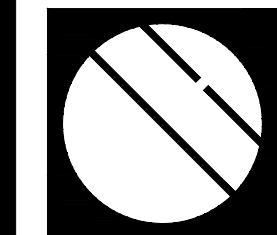


PSLUD # 11-652-33D  
PSL PROJ# 22-173  
POD D PLAT 5  
LANDSCAPE PLAN



Scale: 1" = 60'-0"

North



Cotleur & Hearing

Landscape Architects  
Land Planners  
Environmental Consultants  
1934 Commerce Lane  
Suite 1  
Jupiter, Florida 33458  
561.747.6336 · Fax 747.1377  
www.cotleurhearing.com  
Lic# LC-C000239

VERANO SOUTH  
Kolter Homes  
Port St. Lucie, Florida

DESIGNED	DTS
DRAWN	LAH
DATE	05-18-22
REVISIONS	07-05-22
	08-15-22
	09-27-22

SHEET 3 OF 4

© COTLEUR & HEARING, INC.  
These drawings are the property of the architect and are not to be used for extensions or on other projects except by agreement in writing with the architect. Immediately report any discrepancies to the architect.

