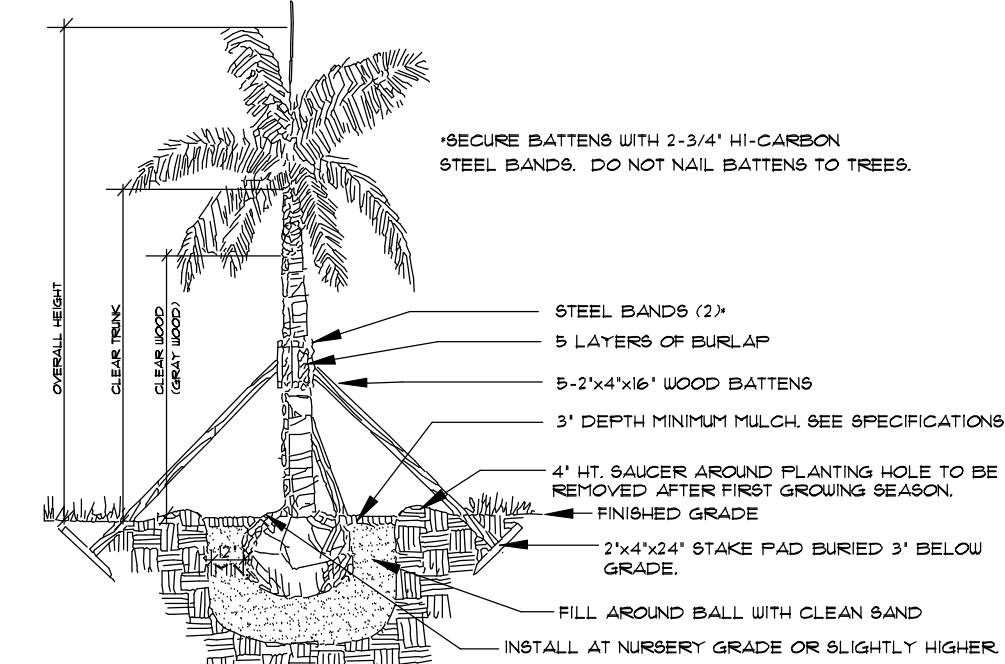


# Symbols Legend

- |           |                                                                 |        |                         |
|-----------|-----------------------------------------------------------------|--------|-------------------------|
| D.E.      | DRAINAGE EASEMENT                                               | O.E.   | OVERHANG EASEMENT       |
| L.M.E.    | LAKE MAINTENANCE EASEMENT                                       | G.E.   | GRADING EASEMENT        |
| L.M.A.E.  | LAKE MAINTENANCE ACCESS EASEMENT                                | PSL    | PORT ST LUCIE           |
| R.O.W.    | RIGHT OF WAY                                                    | L.E.   | LANDSCAPE EASEMENT      |
| U.E.      | UTILITY EASEMENT                                                | D.S.E. | DRAINAGE SWALE EASEMENT |
| U.E.-R.A. | UTILITY EASEMENT - RESTRICTED AREA (SEE "U.E." PLAT DEDICATION) | O.S.   | OPEN SPACE              |
- 
- |     |                                   |   |              |
|-----|-----------------------------------|---|--------------|
| STM | STORM SEWER LINE WITH MANHOLE     | ● | SIGN         |
| STM | STORM SEWER LINE WITH CATCH BASIN | ① | LOT NUMBER   |
| SAN | SANITARY SEWER LINE WITH MANHOLE  | ⊕ | FIRE HYDRANT |
| WM  | WATER MAIN                        |   |              |
- 
- |  |                                         |
|--|-----------------------------------------|
|  | WATER SVC. TO LOT WITH METER W.M.       |
|  | SANITARY SVC. TO LOT WITH CLEANOUT C.O. |

## PSLUD Notes:

- LANDSCAPE PLANS SHALL BE SUBMITTED FOR THE PROJECT INDICATING THE LOCATION OF LANDSCAPE AREAS, PERIMETER WALLS, FOUNDATIONS, BERRIS, TREE WELLS, FENCES, GATES, SIGNS, DECORATIVE ROCKS, SCULPTURE, FOUNTAINS, AND ANY OTHER FEATURES THAT MAY INFLUENCE THE LOCATION OF WATER / WASTEWATER / RECLAIMED WATER FACILITIES. ALSO EXISTING AND PROPOSED WATER / WASTEWATER / RECLAIMED FACILITIES, AND RIGHT-OF-WAY, LOT LINES AND ALL EASEMENT INFORMATION, SHOWING OFFICIAL RECORD BOOK AND PAGE NUMBER SHALL BE INCLUDED. THE PLANS SHALL INCLUDE AND CONFORM TO THE FOLLOWING STANDARD NOTES:
- ALL LANDSCAPING WITHIN PSLUD UTILITY EASEMENTS AND WITHIN 10' OF PSLUD INFRASTRUCTURE SHALL COMPLY WITH CHAPTER 84 OF THE CITY'S CODE OF ORDINANCES AND PSLUD UTILITY STANDARDS.
  - NO LANDSCAPING SHALL BE PLANTED IN SUCH A MANNER AS TO ADVERSELY AFFECT UTILITY INSTALLATION, OPERATION, OR MAINTENANCE.
  - NO LANDSCAPING OTHER THAN SOG GRASSES MAY BE PLANTED WITHIN A 5' RADII MAINTENANCE AREA OF ANY PSLUD APPURTENANCE SUCH AS WATER METERS, BACKFLOW DEVICES, FIRE HYDRANTS, SANITARY SEWER CLEANOUTS, MANHOLES, AIR RELEASE VALVES, ETC. WITH THE EXCEPTION OF FOXTAIL PALMS. TREES SHALL NOT BE PLANTED WITHIN 10' OF ANY PSLUD INFRASTRUCTURE. AS SPECIFICALLY APPROVED BY THE PSLUD, FOXTAIL PALMS MAY BE A DISTANCE NOT LESS THAN SEVEN (7) FEET OF ANY PSLUD INFRASTRUCTURE. ALL MEASUREMENTS ARE FROM OUTSIDE TO OUTSIDE, NOT CENTERLINE TO CENTERLINE. EXAMPLE: OUTSIDE OF PIPE TO NEAREST POINT ON TREE TRUNK.
  - TREES SHALL NOT BE PLANTED WITHIN TEN (10) FEET OF ANY PSLUD MAINS OR APPURTENANCES (UNLESS OTHERWISE APPROVED BY PSLUD).
  - UTILITY & DRAINAGE EASEMENTS TO REMAIN CLEAR OF TREES.



## Palm Planting

- APPLIES TO: ROYAL PALMS, QUEEN PALMS, ALEXANDER PALMS, FOXTAIL PALMS.
- SEE SPECIFICATIONS FOR BACKFILL MIXTURE AND FERTILIZATION.
  - BRACING: SPECIAL SITE CONDITIONS MAY REQUIRE MODIFICATION TO BRACING TECHNIQUE. LANDSCAPE CONTRACTOR WILL ADEQUATELY BRACE ALL PALMS TO PREVENT EXCESSIVE MOVEMENT AND MAINTAIN A VERTICAL POSITION.

## Plant Specifications

SPECIES AND SIZE shall conform to those indicated on the drawings. Nomenclature shall conform to STANDARDIZED PLANT NAMES, current edition. All nursery stock shall be in accordance with Florida Grades and Standards for Nursery Plants, latest edition published by the Florida Department of Agriculture and Consumer Services. All plants not otherwise specified as being Florida Fancy or Specimen, shall be Florida Grade Number 1 or better as determined by the Florida Division of Plant Industry. Specimen means an exceptionally heavy, symmetrical, tightly knotted plant, so trained or favored in its development that first appearance is unquestionable and outstandingly superior in form, number of branches, compactness and symmetry.

### GENERAL REQUIREMENTS

All plants shall be freshly dug, sound, healthy, vigorous, well branched, and free of disease and insect eggs and larvae, and shall have adequate root systems. Trees for planting shall be uniform in size and shape. All materials shall be subject to approval by the Landscape Architect. Where any requirements are omitted from the plant list, the plants furnished shall be normal for the variety. Plants shall be pruned prior to delivery only upon the approval of the Landscape Architect.

### CONTAINER GROWN STOCK

All container grown material shall be healthy, vigorous, well rooted plants, and established in the container in which they are sold. The plants shall have tops which are good quality and in a healthy growing condition. An established container grown plant shall be grown in that container sufficiently long enough for the new fibrous roots to have developed so that the root mass will retain its shape and hold together when removed from the container. Plant root bound in containers are unacceptable.

### MEASUREMENTS

**Trees:** Height shall be measured from ground to the top most portion of the tree. Small, multi-trunked trees are measured to the top of main body of the crown. Spread shall be measured to the end of branching equally around the crown from the center of the trunk. Measurements are not to include any terminal growth. Single trunk trees shall be free of "Y" crotches that could be points of weak line structure or disease infestation.

**Shrubs:** Heights shall be measured from the ground to the average points where mature plant growth stops. Spread shall be measured to the end of branching equally around the shrub mass. Measurements are not to include any terminal growth.

**Palms:** Clear Trunk (C.T.) shall be measured from the ground at the time of installation to the point where the mature aged trunk joins the immature or green portion of the trunk or the head.

Overall height (OH) shall be measured from the ground at the time of installation to a point three quarters the length of the unopened bud. Palms with matted or banded trunks will not be accepted.

### SOIL

Planting soil for use in preparing backfill for plant pits shall be free from heavy clay, stones, lime plants, roots or other foreign materials or noxious grasses (such as Bermuda or nut grass) and noxious weeds. It shall not contain toxic substances which may be harmful to plant growth.

### COMMERCIAL FERTILIZER

Two fertilizers shall be used in all types of plantings, except palms. Granular fertilizer shall be uniform in composition, dry and free flowing. This fertilizer shall be delivered to the site in the original unopened bags, each bearing the Manufacturer's statement of analysis, and shall meet the following requirements: sixteen (16%) percent nitrogen, seven (7%) percent phosphorus, twelve (12%) percent potassium, plus iron. Tablet fertilizer ("Agriform" or equal) in 21 gram size shall meet the following requirements: twenty (20%) percent nitrogen, ten (10%) percent phosphorus, five (5%) percent potassium.

The two fertilizers will be applied at the following rates:

PLANT SIZE	16-7-12	"AGRIFORM"™ TABLET (21 Grams)
1 gal.	1/4 lb.	1
3 gal.	1/3 lb.	2
1-lb gal.	1/2 lb.	4
1"-6" caliper	2 lbs./1" caliper	2/1" caliper
6" and larger	3 lbs./1" caliper	2/1" caliper

"Florida East Coast Palm Special" will be applied to all palms at installation at a rate of 1/2 lb. per inch of trunk caliper unless otherwise specified.

### MULCH

Mulch material shall be three (3) inches of shredded melaleuca mulch (sterilized and free of seeds) or approved equal, moistened at the time of application to prevent wind displacement.

### SUBSTITUTIONS

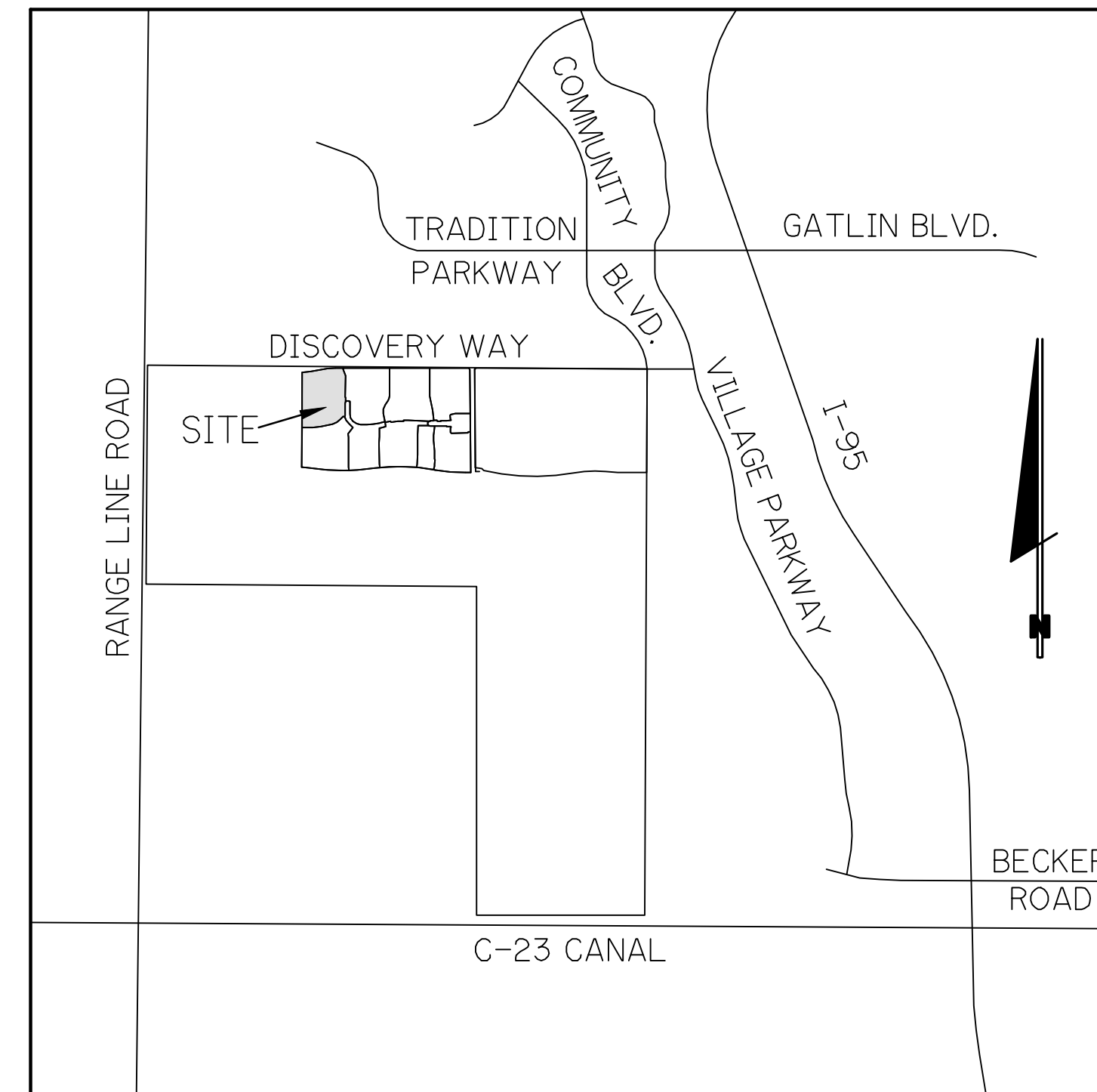
No substitutions of plant material types or size will be allowed without written consent of the Landscape Architect. B4B material will not be accepted as substitute for container grown material unless previously approved. Alternate substitutions shall be indicated in bid.

# RIVERLAND - PARCEL 'C'

## (RIVERLAND MPUD)

# LANDSCAPE PLANS

# PLAT TEN REPLAT



## LOCATION MAP

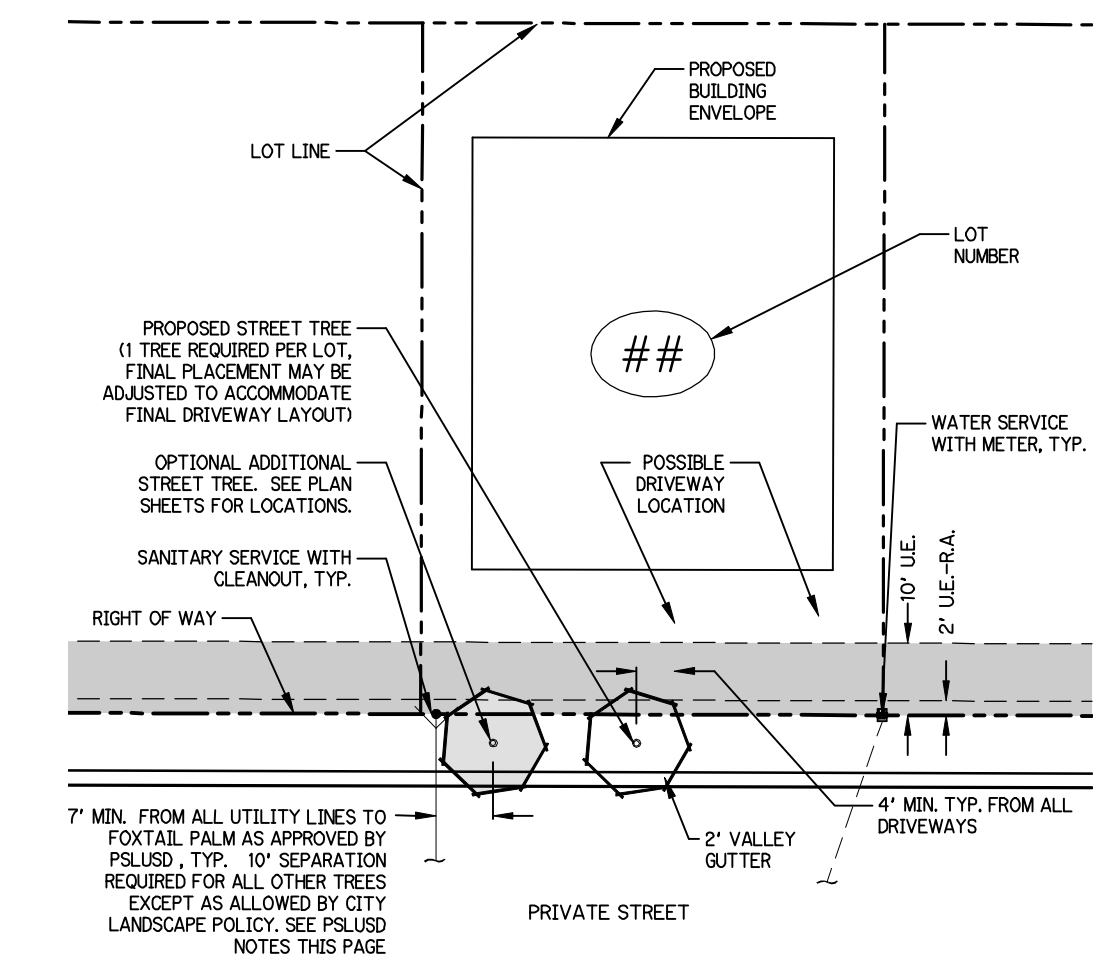
N.T.S.

SEC. 17/20 TWP. 37S RGE. 39E

## Sheet Index

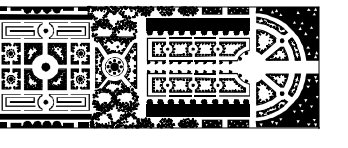
P10-1 - Cover Sheet, Index, General Notes

P10-2 thru P10-10 Plat Ten Replat Landscape Plans



## Typical Lot Layout Detail

N.T.S.



PARKER-YANNETTE  
design group, inc.

LANDSCAPE ARCHITECTURE  
PLANNING • GRAPHICS  
825 South U.S. Highway One  
Suite 330  
Jupiter, Florida 33477

Telephone: (561) 747-5069  
Fax: (561) 747-2041  
Email: mail@pydg.com  
License #LC-0000297

RIVERLAND - PARCEL 'C' - PLAT 10 REPLAT

Developer: Riverland Associates III, LLLP  
PORT ST. LUCIE, FLORIDA

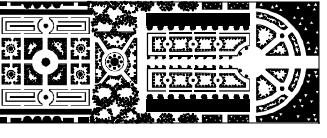
COVER SHEET

DATE: 6.12.20  
DRAWN BY: AJO/TY  
JOB NO.: 19-095  
SCALE: N/A  
FILENAME: RLC 01 STP

REVISIONS:  
8.6.20 Add proj. num.  
10.21 Replat  
2.021 P&L cmnts.

SHEET:

P10-1



PARKER-YANNETTE  
design group, inc.

LANDSCAPE ARCHITECTURE  
PLANNING • GRAPHICS  
825 South U.S. Highway One  
Suite 330  
Jupiter, Florida 33477

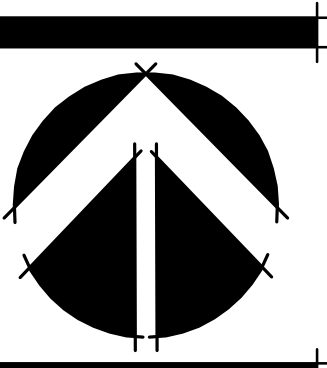
Telephone: (561) 747-5069  
Fax: (561) 747-2041  
Email: mail@pydg.com

License #LC-0000297

RIVERLAND - PARCEL 'C' - PLAT 10 REPLAT  
Developer: Riverland Associates III, LLLP  
PORT ST. LUCIE, FLORIDA  
PLAT TEN LANDSCAPE PLAN

DATE: 6.12.20  
DRAWN BY: AJ/OTY  
JOB NO.: 18-095  
SCALE: 1" = 40'-0"  
FILENAME: RLC 01 STP

REVISIONS:  
8.6.20 Add proj. num.  
10.21 Replat  
2.0.21 PSL cmnts.



SHEET:

P10-2

Plant List (Sheet P10-2 Only)

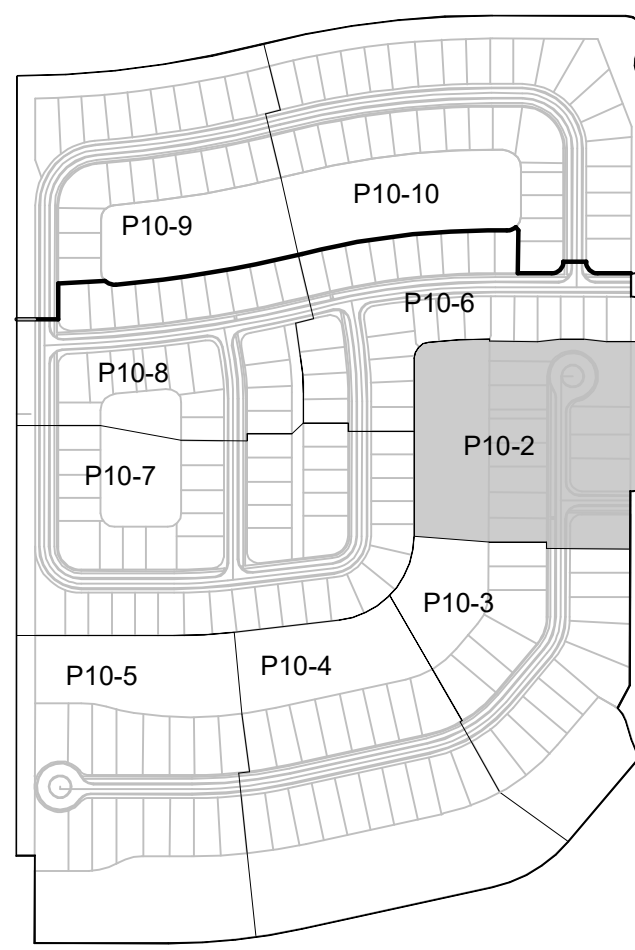
SYM	QTY	NAME	SPECIFICATIONS
<b>PALMS</b>			
WB6	1	Wodyetia bifurcata / Foxtail Palm	6' c.t. straight trunk, full head, unscarred trunk, intact fronds
WB10	13	Wodyetia bifurcata / Foxtail Palm	10' c.t. straight trunk, full head, unscarred trunk, intact fronds
WBOP	4	Optional Additional Street Tree - Wodyetia bifurcata / Foxtail Palm	10' c.t. straight trunk, full head, unscarred trunk, intact fronds
<b>SHRUBS, ACCENTS, AND GROUNDCOVERS</b>			
CPK	1	Cordyline fruticosa 'Kerou' / Ti Plant	3 gal. 16" x 18" full
CRN	35	Clusia rosea 'Nana' / Dwarf Pitch Apple	3 gal. 14" x 18" full, 18" o.c.
SAT	25	Schefflera arboricola 'Trinetta' / Variegated Dwarf Schefflera	3 gal. 22" x 20" full, 24" o.c.

NOTE:  
ALL PLANT MATERIAL SHALL MEET OR EXCEED SIZE AND CONTAINER SPECIFICATIONS IN PLANT LIST. PLANT MATERIALS NOT MEETING SPECIFICATIONS WILL BE REJECTED. CONTRACTOR TO COORDINATE AVAILABILITY ISSUES WITH OWNER PRIOR TO COMMENCING WORK.

\* DENOTES NATIVE SPECIES

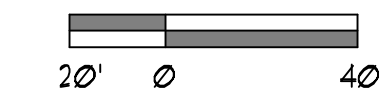
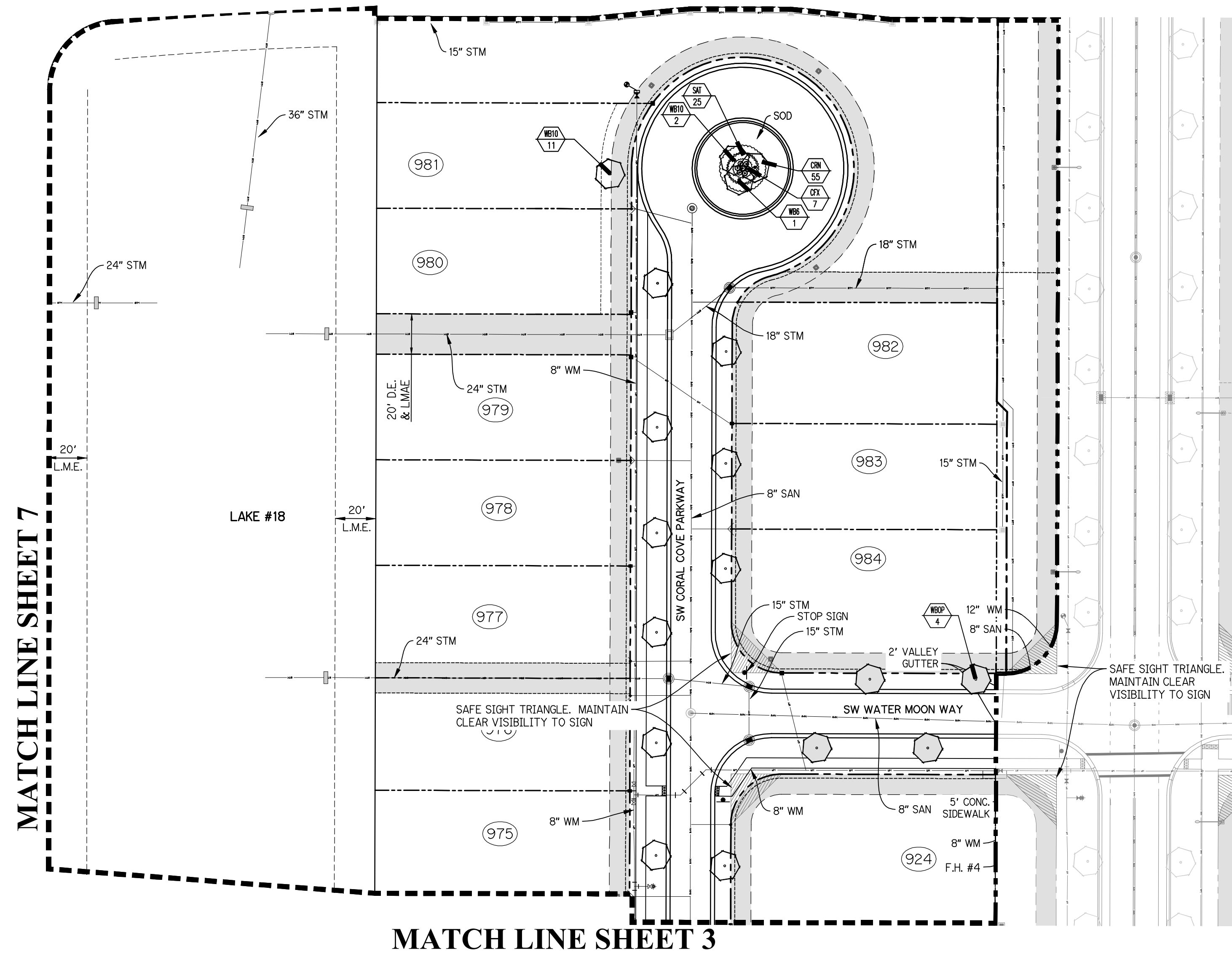
Symbols Legend

D.E.	DRAINAGE EASEMENT	O.E.	OVERHANG EASEMENT
L.M.E.	LAKE MAINTENANCE EASEMENT	G.E.	GRADING EASEMENT
L.M.A.E.	LAKE MAINTENANCE ACCESS EASEMENT	P.S.L.	PORT ST. LUCIE
R.O.W.	RIGHT OF WAY	L.E.	LANDSCAPE EASEMENT
U.E.	UTILITY EASEMENT	D.S.E.	DRAINAGE SWALE EASEMENT
U.E.-R.A.	UTILITY EASEMENT - RESTRICTED AREA (SEE "U.E." PLAT DEDICATION)	O.S.	OPEN SPACE
STM	STORM SEWER LINE WITH MANHOLE	⊠	SIGN
STM	STORM SEWER LINE WITH CAT/BASIN	⊙	LOT NUMBER
SAN	SANITARY SEWER LINE WITH MANHOLE	⊠	FIRE HYDRANT
WM	WATER MAIN		
⊠	WATER SVC. TO LOT WITH METER		
⊠	SANITARY SVC. TO LOT WITH CLEANOUT		

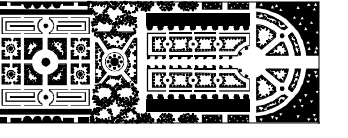


KEY MAP  
N.T.S.

MATCH LINE SHEET 6



PSL PROJECT NO. P21-008



**PARKER-YANNETTE**  
design group, inc.

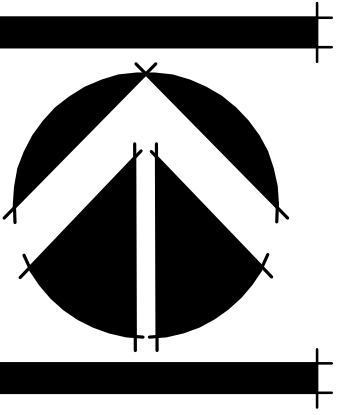
LANDSCAPE ARCHITECTURE  
PLANNING • GRAPHICS  
825 South U.S. Highway One  
Suite 330  
Jupiter, Florida 33477

Telephone: (561) 747-5069  
Fax: (561) 747-2041  
Email: mail@pydg.com  
License #LC-0000297

**RIVERLAND - PARCEL 'C' - PLAT 10 REPLAT**  
Developer: Riverland Associates III, LLLP  
PORT ST. LUCIE, FLORIDA  
PLAT TEN LANDSCAPE PLAN

DATE: 6.12.20  
DRAWN BY: AJ/OTY  
JOB NO.: 18-095  
SCALE: 1" = 40'-0"  
FILENAME: RLC 01 STP

REVISIONS:  
8.6.20 Add proj. num.  
10.21 Replat  
2.21 P&L cmnts.



SHEET:  
**P10-3**

**Plant List** (Sheet P10-3 Only)

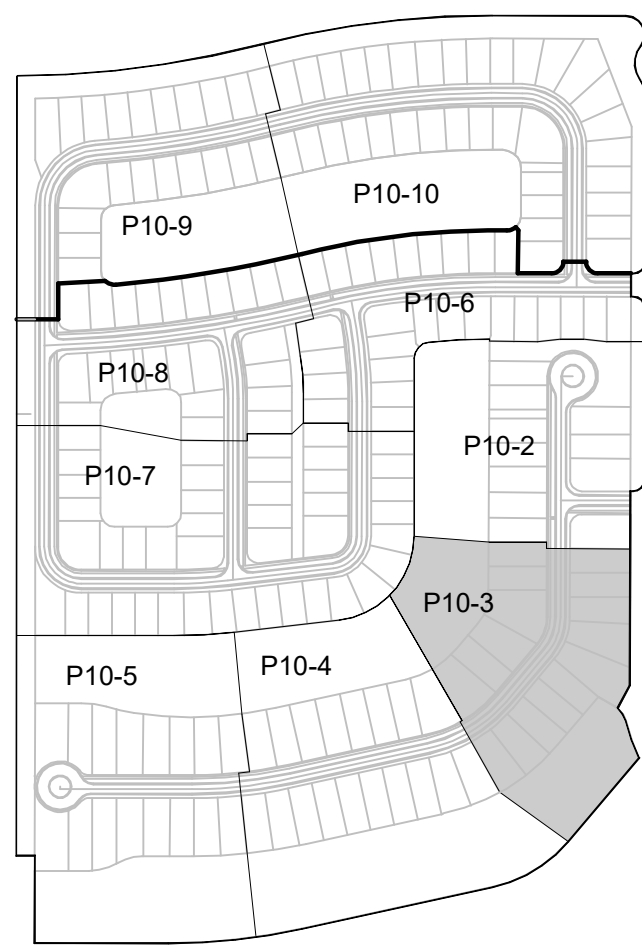
SYM	CITY	NAME	SPECIFICATIONS
PALM5			
WB10	16	Wodyetia bifurcata / Foxtail Palm	10' c.t., straight trunk, full head, unscarred trunk, intact fronds
WBOP	4	Optional Additional Street Tree - Wodyetia bifurcata / Foxtail Palm	10' c.t., straight trunk, full head, unscarred trunk, intact fronds

**NOTE:**  
ALL PLANT MATERIAL SHALL MEET OR EXCEED SIZE AND CONTAINER SPECIFICATIONS IN PLANT LIST. PLANT MATERIALS NOT MEETING SPECIFICATIONS WILL BE REJECTED. CONTRACTOR TO COORDINATE AVAILABILITY ISSUES WITH OWNER PRIOR TO COMMENCING WORK.

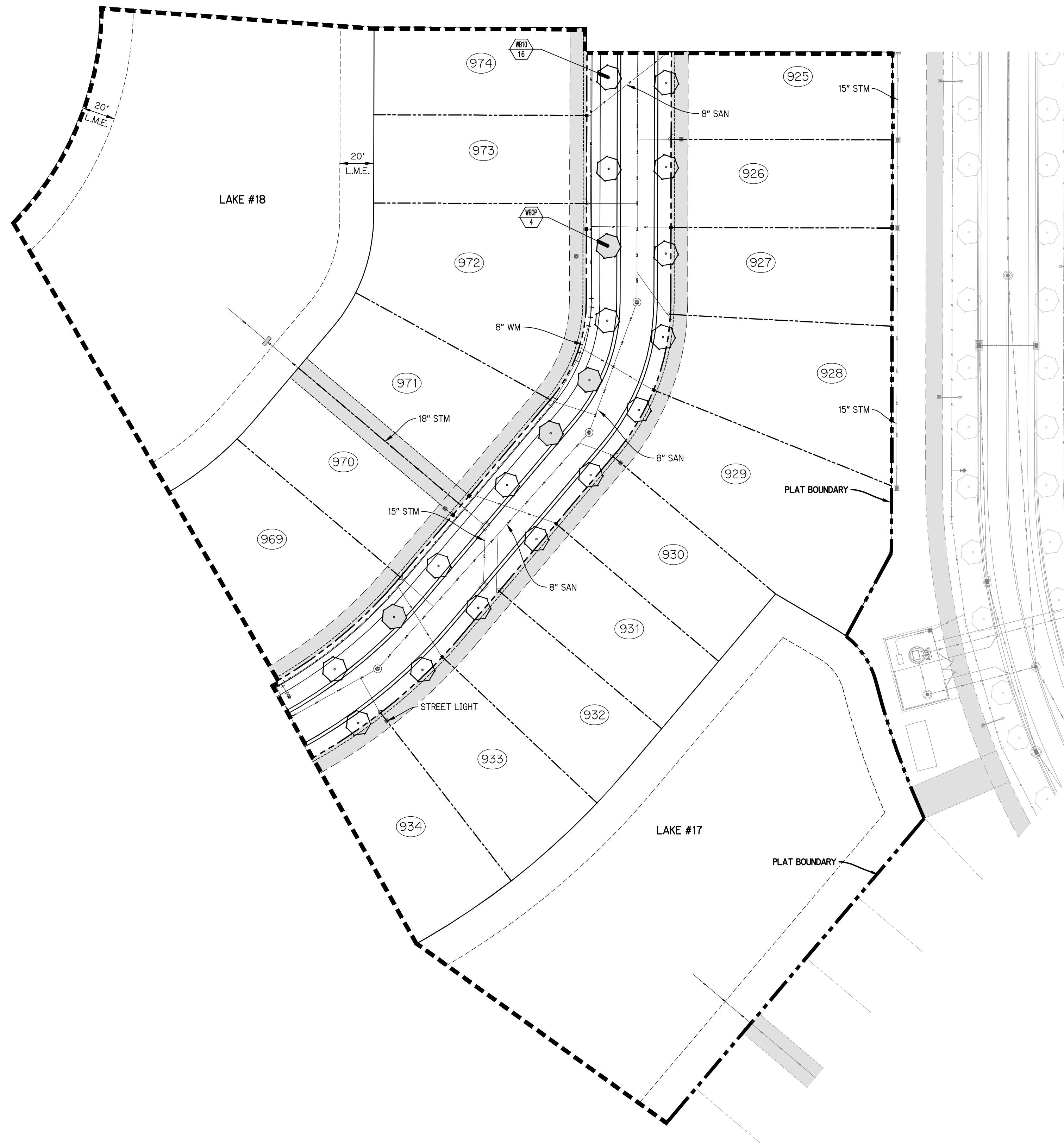
\* DENOTES NATIVE SPECIES

**Symbols Legend**

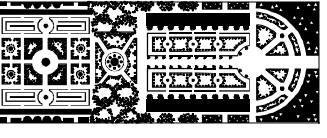
D.E.	DRAINAGE EASEMENT	O.E.	OVERHANG EASEMENT
L.M.E.	LAKE MAINTENANCE EASEMENT	G.E.	GRADING EASEMENT
L.M.A.E.	LAKE MAINTENANCE ACCESS EASEMENT	PSL	PORT ST LUCE
R.O.W.	RIGHT OF WAY	L.E.	LANDSCAPE EASEMENT
U.E.	UTILITY EASEMENT	D.S.E.	DRAINAGE SWALE EASEMENT
U.E.-R.A.	UTILITY EASEMENT - RESTRICTED AREA (SEE "R.A." PLAT DESIGNATION)	O.S.	OPEN SPACE
STM	STORM SEWER LINE WITH MANHOLE	1	LOT NUMBER
STM-C	STORM SEWER LINE WITH CATCH BASIN	⊕	FIRE HYDRANT
SAN	SANITARY SEWER LINE WITH MANHOLE		
WM	WATER MAIN		
	WATER SVC. TO LOT WITH METER (W.M.)		
	SANITARY SVC. TO LOT WITH CLEANOUT (C.O.)		



KEY MAP  
N.T.S.



PSL PROJECT NO. P21-008



**PARKER-YANNETTE**  
design group, inc.

LANDSCAPE ARCHITECTURE  
PLANNING • GRAPHICS  
825 South U.S. Highway One  
Suite 330  
Jupiter, Florida 33477

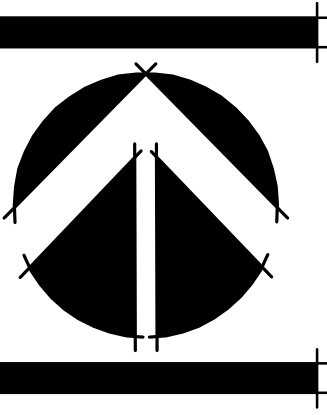
Telephone: (561) 747-5069  
Fax: (561) 747-2041  
Email: mail@pydg.com

License #LC-0000297

**RIVERLAND - PARCEL 'C' - PLAT 10 REPLAT**  
Developer: Riverland Associates III, LLLP  
PORT ST. LUCIE, FLORIDA  
PLAT TEN LANDSCAPE PLAN

DATE: 6.12.20  
DRAWN BY: AJ/OTY  
JOB NO.: 18-095  
SCALE: 1" = 40'-0"  
FILENAME: RLC 01 STP

REVISIONS:  
8.6.20 Add proj. num.  
10.21 Replat  
2.2.21 P&L cmnts.



SHEET:

**P10-4**

**Plant List** (Sheet P10-4 Only)

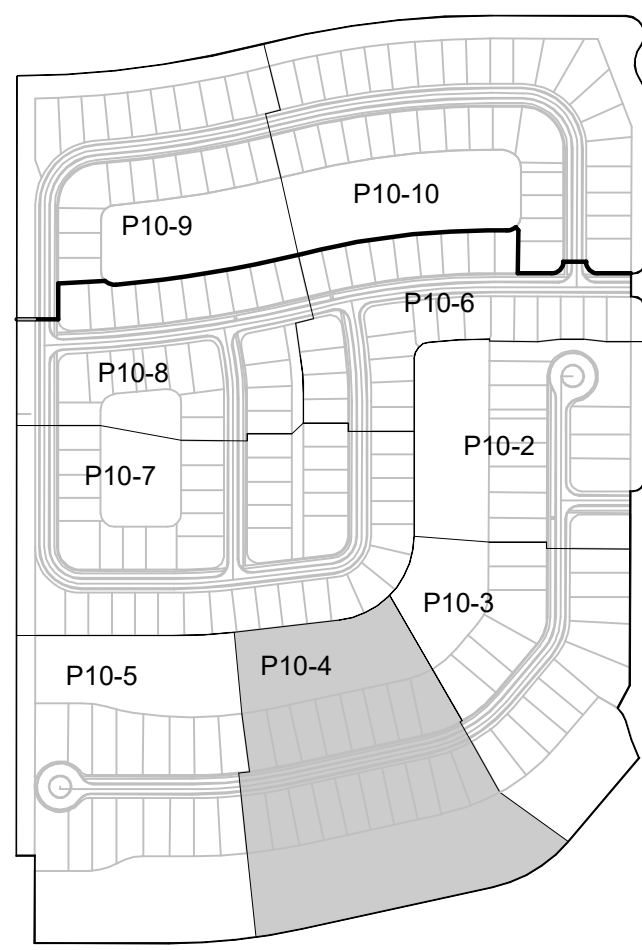
SYM.	QTY.	NAME	SPECIFICATIONS
PALM16			
UB10	18	Wodyetia bifurcata / Foxtail Palm	10" c.t., straight trunk, full head, unscarred trunk, intact fronds
UBOP	1	Optional Additional Street Tree - Wodyetia bifurcata / Foxtail Palm	10" c.t., straight trunk, full head, unscarred trunk, intact fronds

**NOTE:**  
ALL PLANT MATERIAL SHALL MEET OR EXCEED SIZE AND CONTAINER SPECIFICATIONS IN PLANT LIST. PLANT MATERIALS NOT MEETING SPECIFICATIONS WILL BE REJECTED. CONTRACTOR TO COORDINATE AVAILABILITY ISSUES WITH OWNER PRIOR TO COMMENCING WORK.

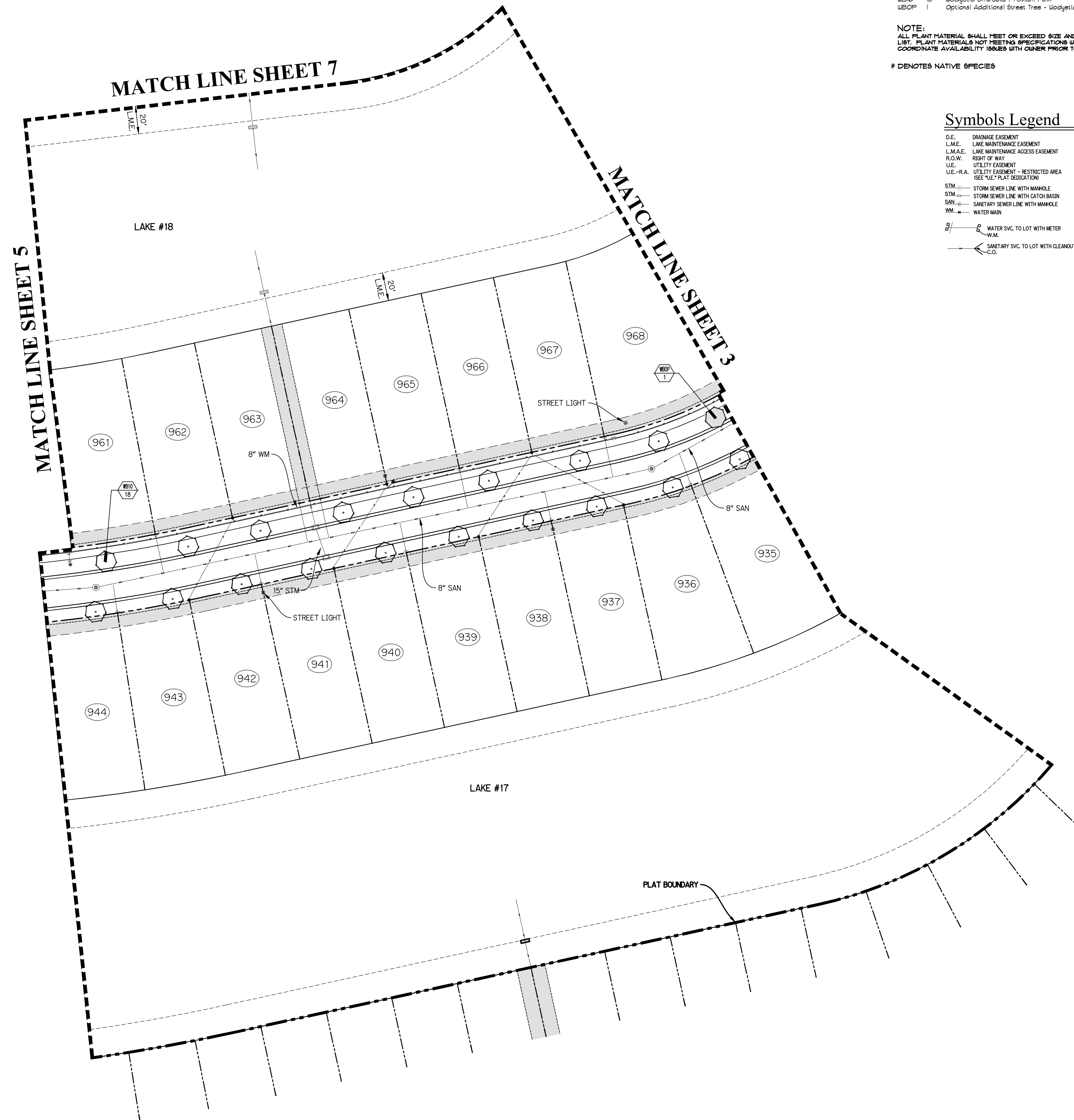
\* DENOTES NATIVE SPECIES

**Symbols Legend**

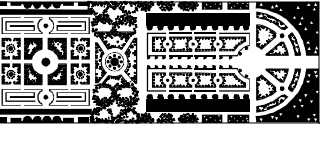
D.E.	DRAINAGE EASEMENT	O.E.	OVERHANG EASEMENT
L.M.E.	LAKE MAINTENANCE EASEMENT	G.E.	GRADING EASEMENT
L.M.A.E.	LAKE MAINTENANCE ACCESS EASEMENT	PSL	PORT ST LUCIE
R.O.W.	RIGHT OF WAY	L.E.	LANDSCAPE EASEMENT
U.E.	UTILITY EASEMENT	D.S.E.	DRAINAGE SWALE EASEMENT
U.E.-R.A.	UTILITY EASEMENT - RESTRICTED AREA (SEE "R.A." PLAT DESIGNATION)	O.S.	OPEN SPACE
STM	STORM SEWER LINE WITH MANHOLE	SN	SIGN
STM-C	STORM SEWER LINE WITH CATCH BASIN	①	LOT NUMBER
SAN	SANITARY SEWER LINE WITH MANHOLE	⊕	FIRE HYDRANT
WM	WATER MAIN		
W.S.	WATER SVC. TO LOT WITH METER		
W.M.	WATER MAIN		
S.S.	SANITARY SVC. TO LOT WITH CLEANOUT		
C.O.	CLEANOUT		



KEY MAP  
N.T.S.



PSL PROJECT NO. P21-008



PARKER-YANNETTE  
design group, inc.

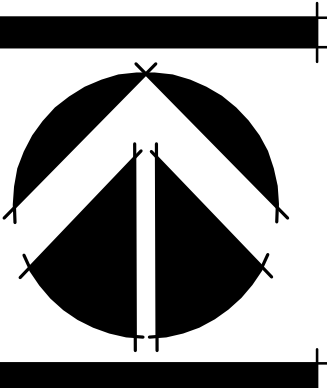
LANDSCAPE ARCHITECTURE  
PLANNING • GRAPHICS  
825 South U.S. Highway One  
Suite 330  
Jupiter, Florida 33477

Telephone: (561) 747-5069  
Fax: (561) 747-2041  
Email: mail@pydg.com  
License #LC-0000297

RIVERLAND - PARCEL 'C' - PLAT 10 REPLAT  
Developer: Riverland Associates III, LLLP  
PORT ST. LUCIE, FLORIDA  
PLAT TEN LANDSCAPE PLAN

DATE: 6.12.20  
DRAWN BY: AJJOTY  
JOB NO.: 18-095  
SCALE: 1" = 40'-0"  
FILENAME: RLC 01 STP

REVISIONS:  
8.6.20 Add proj. num.  
10.21 Replat  
2.0.21 PSL cmnts.



SHEET:  
P10-5

Plant List (Sheet P10-5 Only)

SYM.	QTY.	NAME	SPECIFICATIONS
<b>TREES</b>			
* CE56	14	Conocarpus erectus sericeus / Silver Buttonwood	6' ht. x 4' spr., multi-stem, limbed up, full canopy
* QV2	2	Quercus virginiana / Live Oak	12' x 6', 25' cal., straight trunk, full canopy
<b>PALMS</b>			
CH14	18	Chrysalidopsis / Fishtail Palm	14'-16' o.a., full to base, dense
WB6	1	Wodyetia bifurcata / Foxtail Palm	6' cal., straight trunk, full head, unscarred trunk, intact fronds
WB10	16	Wodyetia bifurcata / Foxtail Palm	10' cal., straight trunk, full head, unscarred trunk, intact fronds
<b>SHRUBS, ACCENTS, AND GROUNDCOVERS</b>			
CFX	1	Cordyline fruticosa 'Kerax' / Ti Plant	3 gal., 16" x 18", full
CG6	5	Clusia guttifera / Small Leaf Clusia	29 gal., 6' x 4', full to base, dense
CI	238	Chrysobalanus icaco / Cocoplum	3 gal., 20" x 20", full to base
CRN	55	Clusia rosea 'Nana' / Dwarf Pitch Apple	3 gal., 14 x 18", full, 18" o.c.
BAT	25	Schefflera arboricola 'Trinette' / Variegated Dwarf Schefflera	3 gal., 22" x 20", full, 24" o.c.

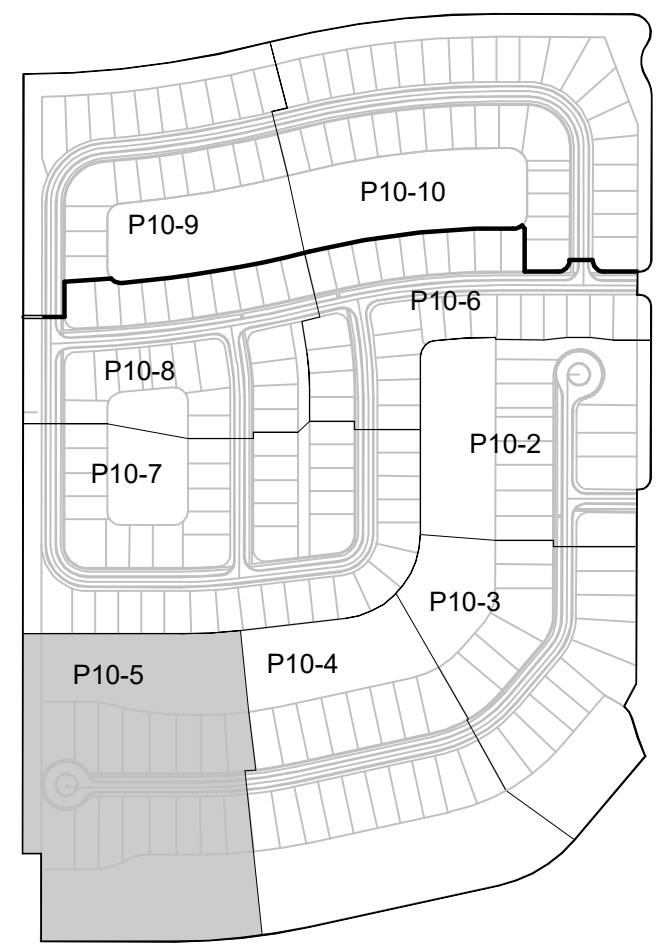
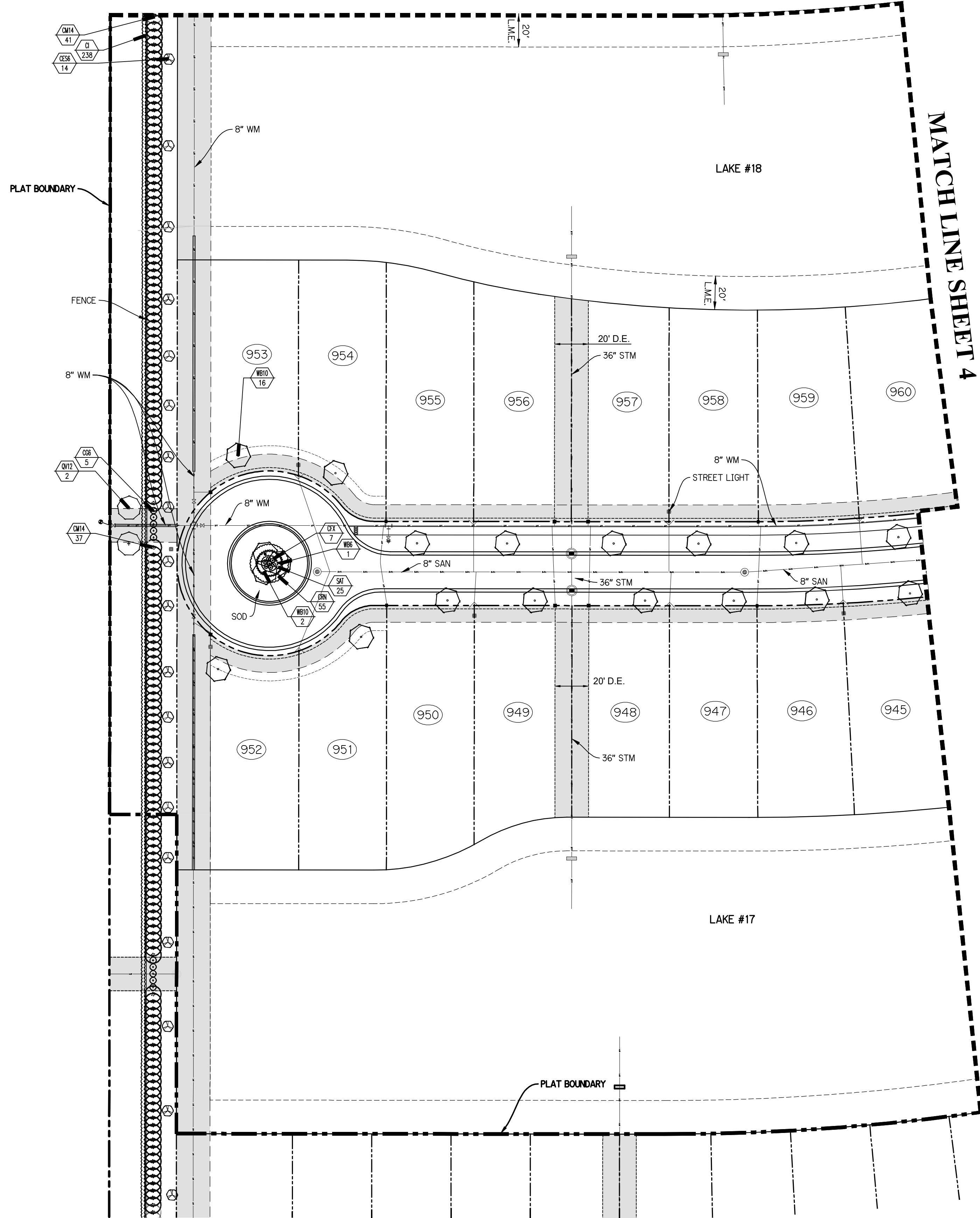
NOTE:  
ALL PLANT MATERIAL SHALL MEET OR EXCEED SIZE AND CONTAINER SPECIFICATIONS IN PLANT LIST. PLANT MATERIALS NOT MEETING SPECIFICATIONS WILL BE REJECTED. CONTRACTOR TO COORDINATE AVAILABILITY ISSUES WITH OWNER PRIOR TO COMMENCING WORK.

\* DENOTES NATIVE SPECIES

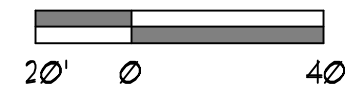
Symbols Legend

D.E.	DRAINAGE EASEMENT	O.E.	OVERHANG EASEMENT
L.M.E.	LAKE MAINTENANCE EASEMENT	G.E.	GRADING EASEMENT
L.M.A.E.	LAKE MAINTENANCE ACCESS EASEMENT	PSL	PORT ST LUCIE
R.O.W.	RIGHT OF WAY	L.E.	LANDSCAPE EASEMENT
U.E.	UTILITY EASEMENT	D.S.E.	DRAINAGE SWALE EASEMENT
U.E.-R.A.	UTILITY EASEMENT - RESTRICTED AREA (SEE "U.E." PLAT DEDICATION)	O.S.	OPEN SPACE
STM	STORM SEWER LINE WITH MANHOLE	STN	STATION
STM	STORM SEWER LINE WITH CATCH BASIN	LOT	LOT NUMBER
SAN	SANITARY SEWER LINE WITH MANHOLE	HYD	FIRE HYDRANT
WM	WATER MAIN		
W.M.	WATER SVC. TO LOT WITH METER		
S.V.C.	SANITARY SVC. TO LOT WITH CLEANOUT		
C.O.			

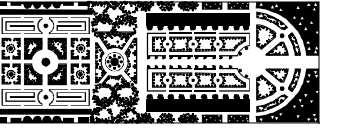
MATCH LINE SHEET 7



KEY MAP  
N.T.S.



PSL PROJECT NO. P21-008



PARKER-YANNETTE  
design group, inc.

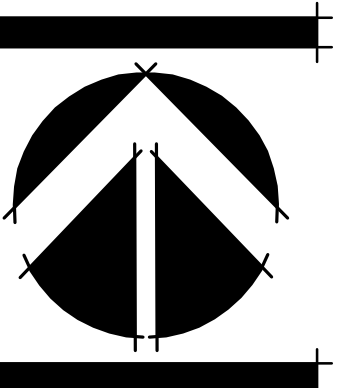
LANDSCAPE ARCHITECTURE  
PLANNING • GRAPHICS  
825 South U.S. Highway One  
Suite 330  
Jupiter, Florida 33477

Telephone: (561) 747-5069  
Fax: (561) 747-2041  
Email: mail@pydg.com  
License #LC-0000297

RIVERLAND - PARCEL 'C' - PLAT 10 REPLAT  
Developer: Riverland Associates III, LLLP  
PORT ST. LUCIE, FLORIDA  
PLAT TEN LANDSCAPE PLAN

DATE: 6.12.20  
DRAWN BY: AJOTY  
JOB NO.: 18-095  
SCALE: 1" = 40'-0"  
FILENAME: RLC 01 STP

REVISIONS:  
8.6.20 Add proj. num.  
10.21 Replat  
2.221 PSL cmnts.



SHEET:  
P10-6

Plant List (Sheet P10-6 Only)

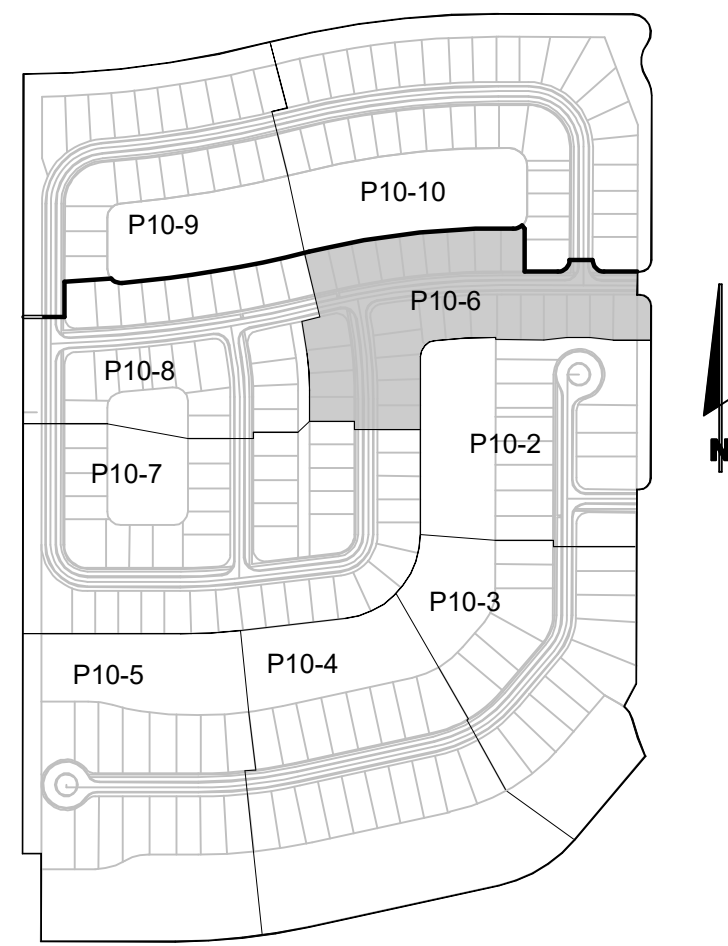
SYM.	QTY.	NAME	SPECIFICATIONS
WBP10	21	Wodyetia bifurcata / Foxtail Palm	10' c.t. straight trunk, full head, unscarred trunk, intact fronds
WBP01	1	Optional Additional Street Tree - Wodyetia bifurcata / Foxtail Palm	10' c.t. straight trunk, full head, unscarred trunk, intact fronds

NOTE:  
ALL PLANT MATERIAL SHALL MEET OR EXCEED SIZE AND CONTAINER SPECIFICATIONS IN PLANT LIST. PLANT MATERIALS NOT MEETING SPECIFICATIONS WILL BE REJECTED. CONTRACTOR TO COORDINATE AVAILABILITY ISSUES WITH OWNER PRIOR TO COMMENCING WORK.

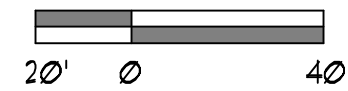
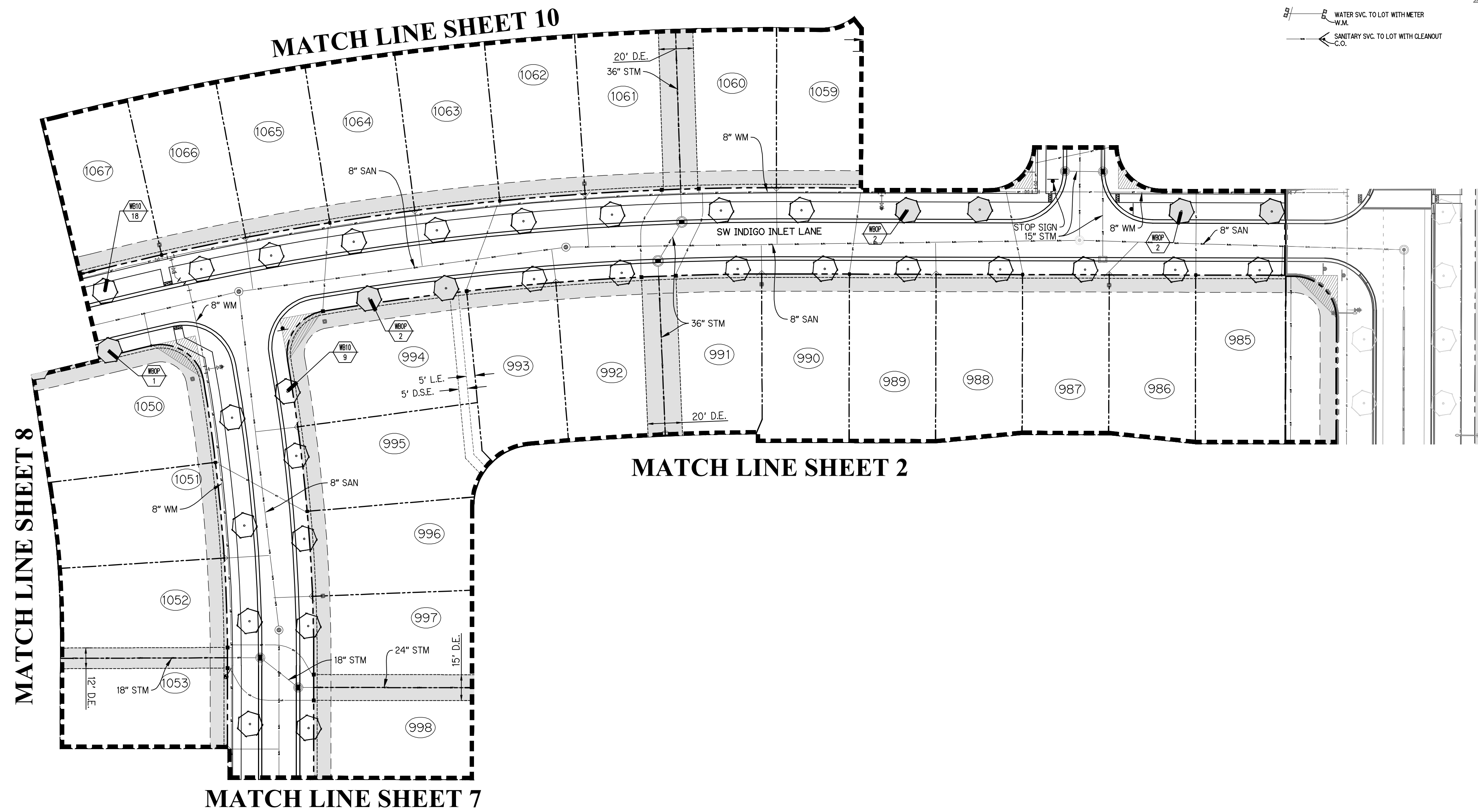
\* DENOTES NATIVE SPECIES

Symbols Legend

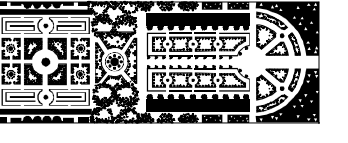
D.E.	DRAINAGE EASEMENT	O.E.	OVERHANG EASEMENT
L.M.E.	LAKE MAINTENANCE EASEMENT	G.E.	GRADING EASEMENT
L.M.A.E.	LAKE MAINTENANCE ACCESS EASEMENT	PSL	PORT ST LUCIE
R.O.W.	RIGHT OF WAY	L.E.	LANDSCAPE EASEMENT
U.E.	UTILITY EASEMENT	D.S.E.	DRAINAGE SWALE EASEMENT
U.E.-R.A.	UTILITY EASEMENT - RESTRICTED AREA (SEE "U.E." PLAT DEDICATION)	O.S.	OPEN SPACE
STM	STORM SEWER LINE WITH MANHOLE	SM	STOP SIGN
STM	STORM SEWER LINE WITH CATCH BASIN	LOT	LOT NUMBER
SAN	SANITARY SEWER LINE WITH MANHOLE	HYD	FIRE HYDRANT
WM	WATER MAIN		
W.M.	WATER SVC. TO LOT WITH METER		
S.V.C.	SANITARY SVC. TO LOT WITH CLEANOUT		



KEY MAP  
N.T.S.



PSL PROJECT NO. P21-008



PARKER-YANNETTE  
design group, inc.

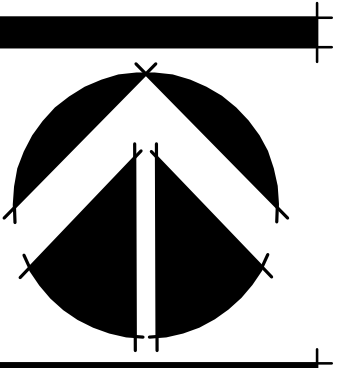
LANDSCAPE ARCHITECTURE  
PLANNING • GRAPHICS  
825 South U.S. Highway One  
Suite 330  
Jupiter, Florida 33477

Telephone: (561) 747-5069  
Fax: (561) 747-2041  
Email: mail@pydg.com  
License #LC-0000297

RIVERLAND - PARCEL 'C' - PLAT 10 REPLAT  
Developer: Riverland Associates III, LLLP  
PORT ST. LUCIE, FLORIDA  
PLAT TEN LANDSCAPE PLAN

DATE: 6.12.20  
DRAWN BY: AJOTY  
JOB NO.: 18-095  
SCALE: 1" = 40'-0"  
FILENAME: RLC 01 STP

REVISIONS:  
8.6.20 Add proj. num.  
10.21 Replat  
2.021 PSL cmnts.



SHEET:  
P10-7

Plant List (Sheet P10-7 Only)

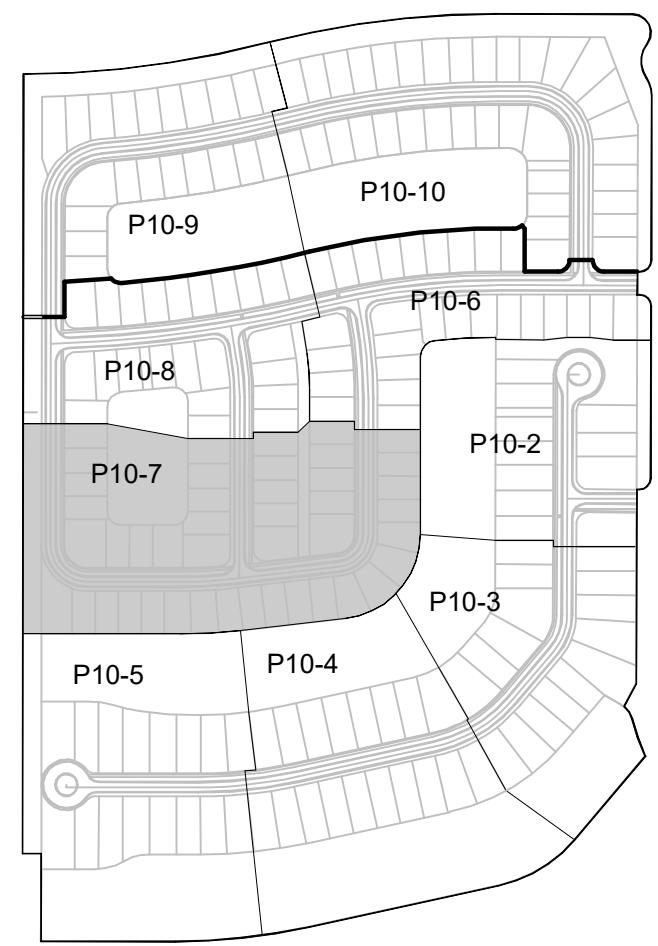
SYM	QTY	NAME	SPECIFICATIONS
TREES			
* CE56	9	Conocarpus erectus sericeus / Silver Buttonwood	6' Ht. x 4' spt., multi-stem, limbed up, full canopy
PALMS			
CM14	104	Corypha mitis / Fichtall Palm	14'-16" o.d., full to base, dense
UB10	43	Wodyetia bifurcata / Foxhall Palm	10' o.d., straight trunk, full head, unscarred trunk, intact fronds
UBOP	16	Optional Additional Street Tree - Wodyetia bifurcata / Foxhall Palm	10' o.d., straight trunk, full head, unscarred trunk, intact fronds
SHRUBS, ACCENTS, AND GROUNDCOVERS			
CI	228	Chrysothamnus toxicus / Coccolupum	3 gal., 20" x 20", full to base

NOTE:  
ALL PLANT MATERIAL SHALL MEET OR EXCEED SIZE AND CONTAINER SPECIFICATIONS IN PLANT LIST. PLANT MATERIALS NOT MEETING SPECIFICATIONS WILL BE REJECTED. CONTRACTOR TO COORDINATE AVAILABILITY ISSUES WITH OWNER PRIOR TO COMMENCING WORK.

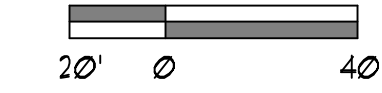
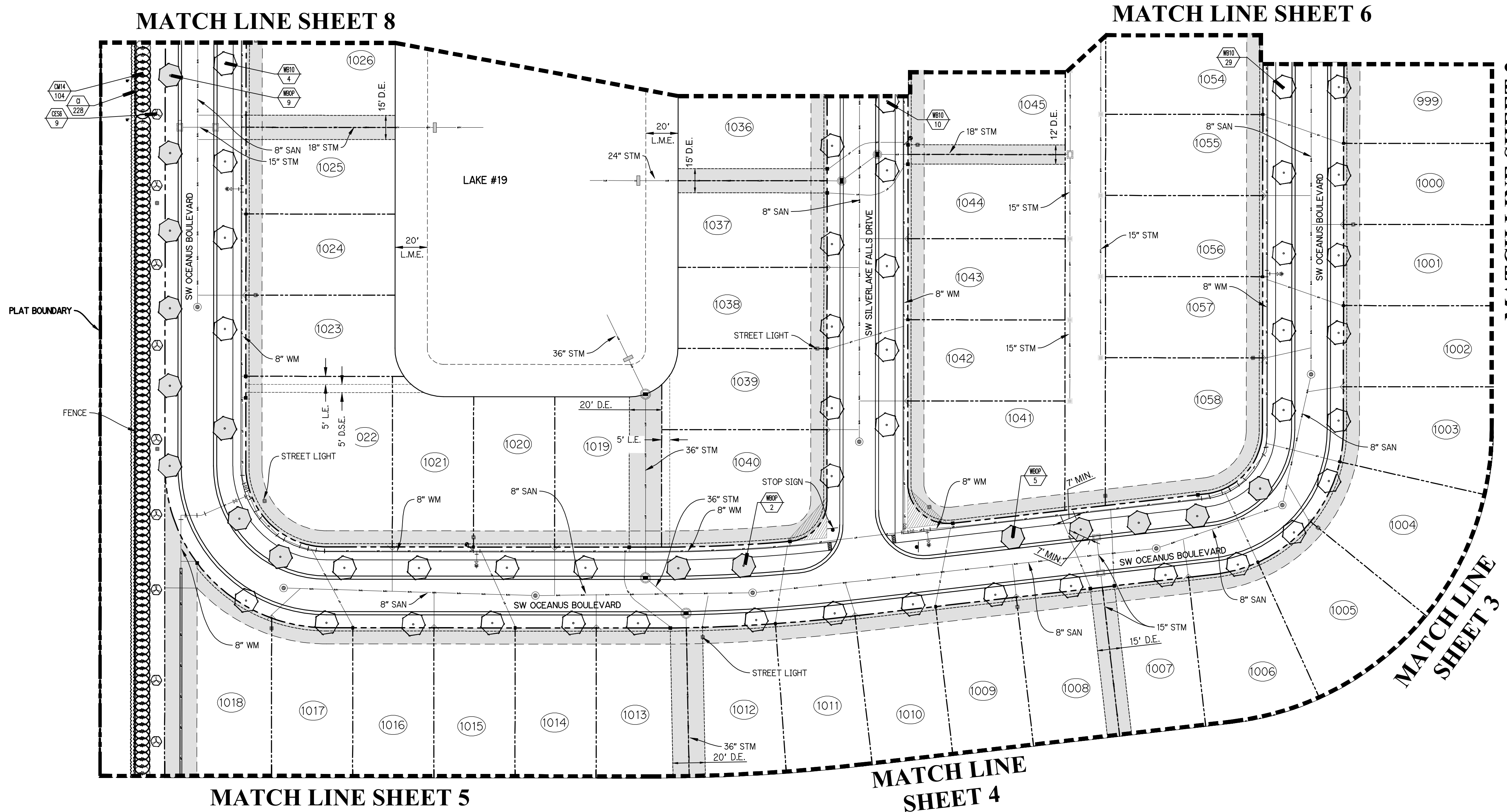
\* DENOTES NATIVE SPECIES

Symbols Legend

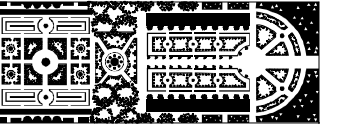
D.E.	DRAINAGE EASEMENT	O.E.	OVERHANG EASEMENT
L.M.E.	LAKE MAINTENANCE EASEMENT	G.E.	GRADING EASEMENT
L.M.A.E.	LAKE MAINTENANCE ACCESS EASEMENT	PSL	PORT ST LUCIE
R.O.W.	RIGHT OF WAY	L.E.	LANDSCAPE EASEMENT
U.E.	UTILITY EASEMENT	D.S.E.	DRAINAGE SWALE EASEMENT
U.E.-R.A.	UTILITY EASEMENT - RESTRICTED AREA (SEE "U.E." PLAT DEDICATION)	O.S.	OPEN SPACE
STM	STORM SEWER LINE WITH MANHOLE	SSN	STORM
STM	STORM SEWER LINE WITH CATCH BASIN	LOT	LOT NUMBER
SAN	SANITARY SEWER LINE WITH MANHOLE	HYD	FIRE HYDRANT
WM	WATER MAIN		
W.M.	WATER SVC. TO LOT WITH METER		
SAN	SANITARY SVC. TO LOT WITH CLEANOUT		



KEY MAP  
N.T.S.



PSL PROJECT NO. P21-008

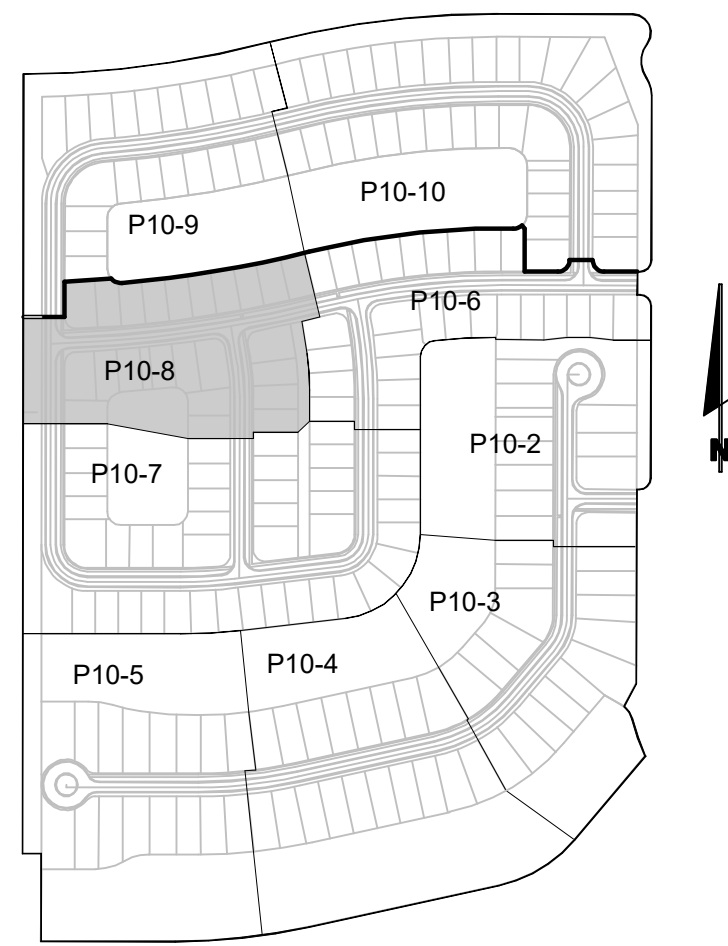


PARKER-YANNETTE  
design group, inc.

LANDSCAPE ARCHITECTURE  
PLANNING • GRAPHICS  
825 South U.S. Highway One  
Suite 330  
Jupiter, Florida 33477

Telephone: (561) 747-5069  
Fax: (561) 747-2041  
Email: mail@pydg.com

License #LC-0000297



KEY MAP  
N.T.S.

Plant List (Sheet P10-8 Only)

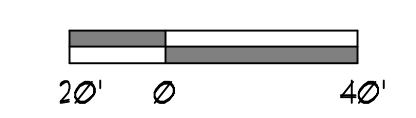
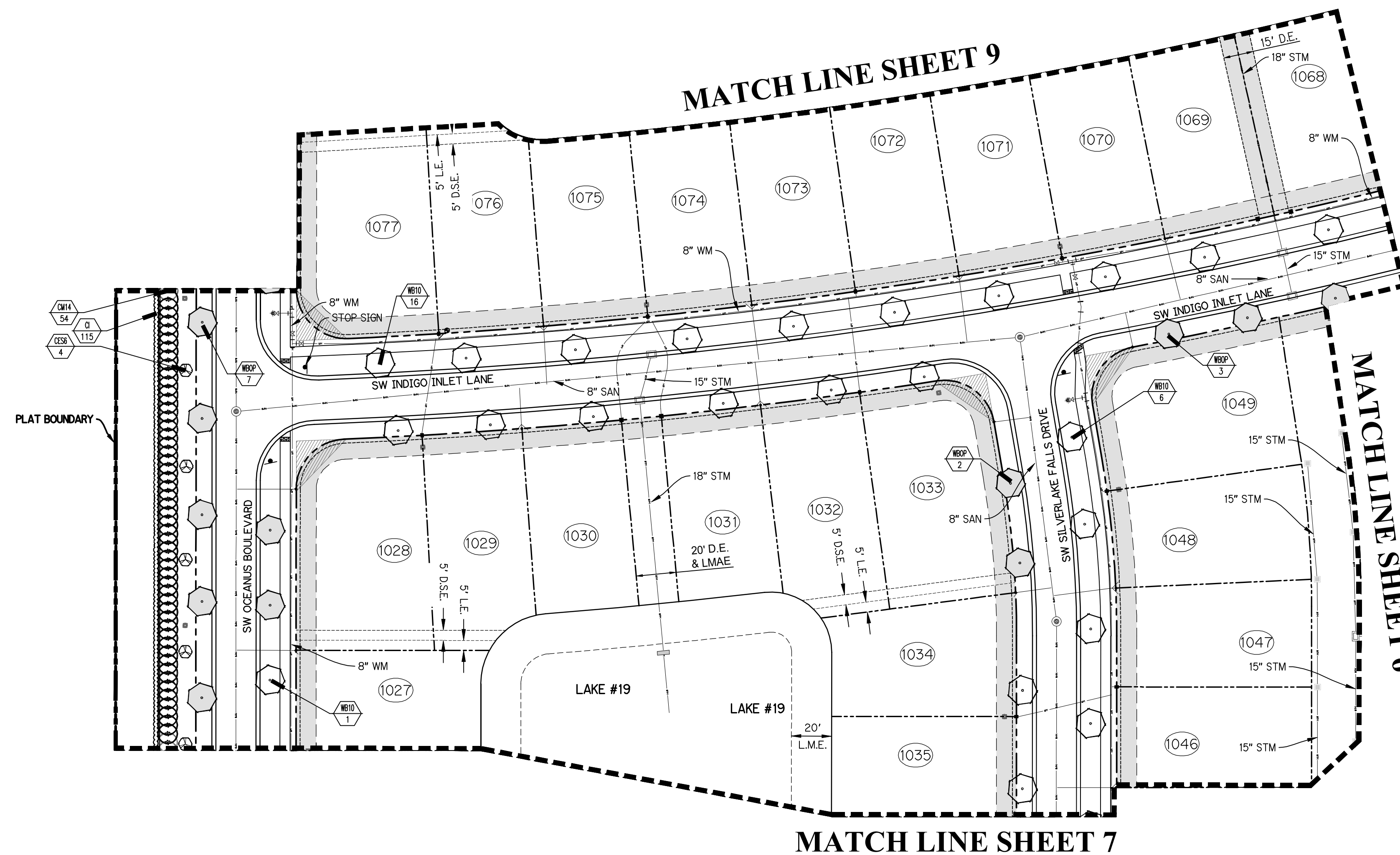
SYM.	QTY.	NAME	SPECIFICATIONS
<b>TREES</b>			
* CE56	4	Conocarpus erectus sericeus / Silver Buttonwood	6' ht. x 4' spr, multi-stem, limbed up, full canopy
<b>PALMS</b>			
CH14	54	Caryota mitis / Fishtail Palm	14'-16' o.a., full to base, dense
WB20	23	Wodyetia bifurcata / Foxtail Palm	10' c.t., straight trunk, full head, unscarred trunk, intact fronds
WB09	9	Optional Additional Street Tree - Wodyetia bifurcata / Foxtail Palm	10' c.t., straight trunk, full head, unscarred trunk, intact fronds
<b>SHRUBS, ACCENTS, AND GROUNDCOVERS</b>			
CI	15	Chrysobalanus icaco / Coccoloba	3 gal, 20" x 20", full to base

NOTE:  
ALL PLANT MATERIAL SHALL MEET OR EXCEED SIZE AND CONTAINER SPECIFICATIONS IN PLANT LIST. PLANT MATERIALS NOT MEETING SPECIFICATIONS WILL BE REJECTED. CONTRACTOR TO COORDINATE AVAILABILITY ISSUES WITH OWNER PRIOR TO COMMENCING WORK.

\* DENOTES NATIVE SPECIES

Symbols Legend

D.E.	DRAINAGE EASEMENT	O.E.	OVERHANG EASEMENT
L.M.E.	LAKE MAINTENANCE EASEMENT	G.E.	GRADING EASEMENT
L.M.A.E.	LAKE MAINTENANCE ACCESS EASEMENT	PSL	PORT ST LUCE
R.O.W.	RIGHT OF WAY	L.E.	LANDSCAPE EASEMENT
U.E.	UTILITY EASEMENT	D.S.E.	DRAINAGE SWALE EASEMENT
U.E.-R.A.	UTILITY EASEMENT - RESTRICTED AREA (SEE "U.E." PLAT DEDICATION)	O.S.	OPEN SPACE
STM	STORM SEWER LINE WITH MANHOLE	STN	STATION
STM	STORM SEWER LINE WITH CATCH BASIN	LOT	LOT NUMBER
SAN	SANITARY SEWER LINE WITH MANHOLE	HYD	FIRE HYDRANT
WM	WATER MAIN		
W.M.	WATER SVC. TO LOT WITH METER		
S.W.C.	SANITARY SVC. TO LOT WITH CLEANOUT		

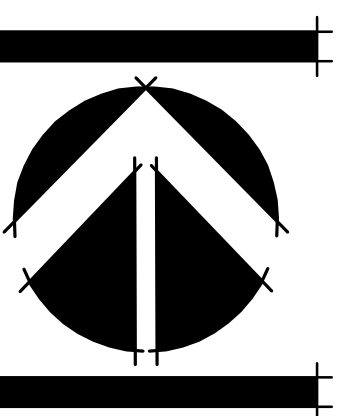


PSL PROJECT NO. P21-008

RIVERLAND - PARCEL 'C' - PLAT 10 REPLAT  
Developer: Riverland Associates III, LLLP  
PORT ST. LUCIE, FLORIDA  
PLAT TEN LANDSCAPE PLAN

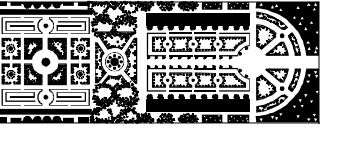
DATE: 6.12.20  
DRAWN BY: AJOTTY  
JOB NO.: 18-095  
SCALE: 1" = 40'-0"  
FILENAME: RLC 01 STP

REVISIONS:  
8.6.20 Add proj. num.  
10.21 Replat  
2.021 PSL cmnts.



SHEET:  
P10-8





PARKER-YANNETTE  
design group, inc.

LANDSCAPE ARCHITECTURE  
PLANNING • GRAPHICS  
825 South U.S. Highway One  
Suite 330  
Jupiter, Florida 33477

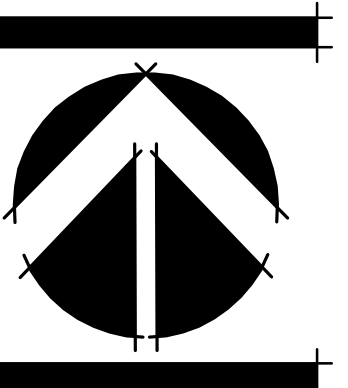
Telephone: (561) 747-5069  
Fax: (561) 747-2041  
Email: mail@pydg.com

License #LC-0000297

RIVERLAND - PARCEL 'C' - PLAT 10 REPLAT  
Developer: Riverland Associates III, LLLP  
PORT ST. LUCIE, FLORIDA  
PLAT TEN LANDSCAPE PLAN

DATE: 6.12.20  
DRAWN BY: AJOTY  
JOB NO.: 18-095  
SCALE: 1" = 40'-0"  
FILENAME: RLC 01 STP

REVISIONS:  
8.6.20 Add proj. num.  
10.21 Replat  
2.21 PSL cmnts.



SHEET:

P10-9

Plant List (Sheet P10-9 Only)

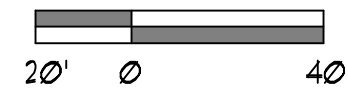
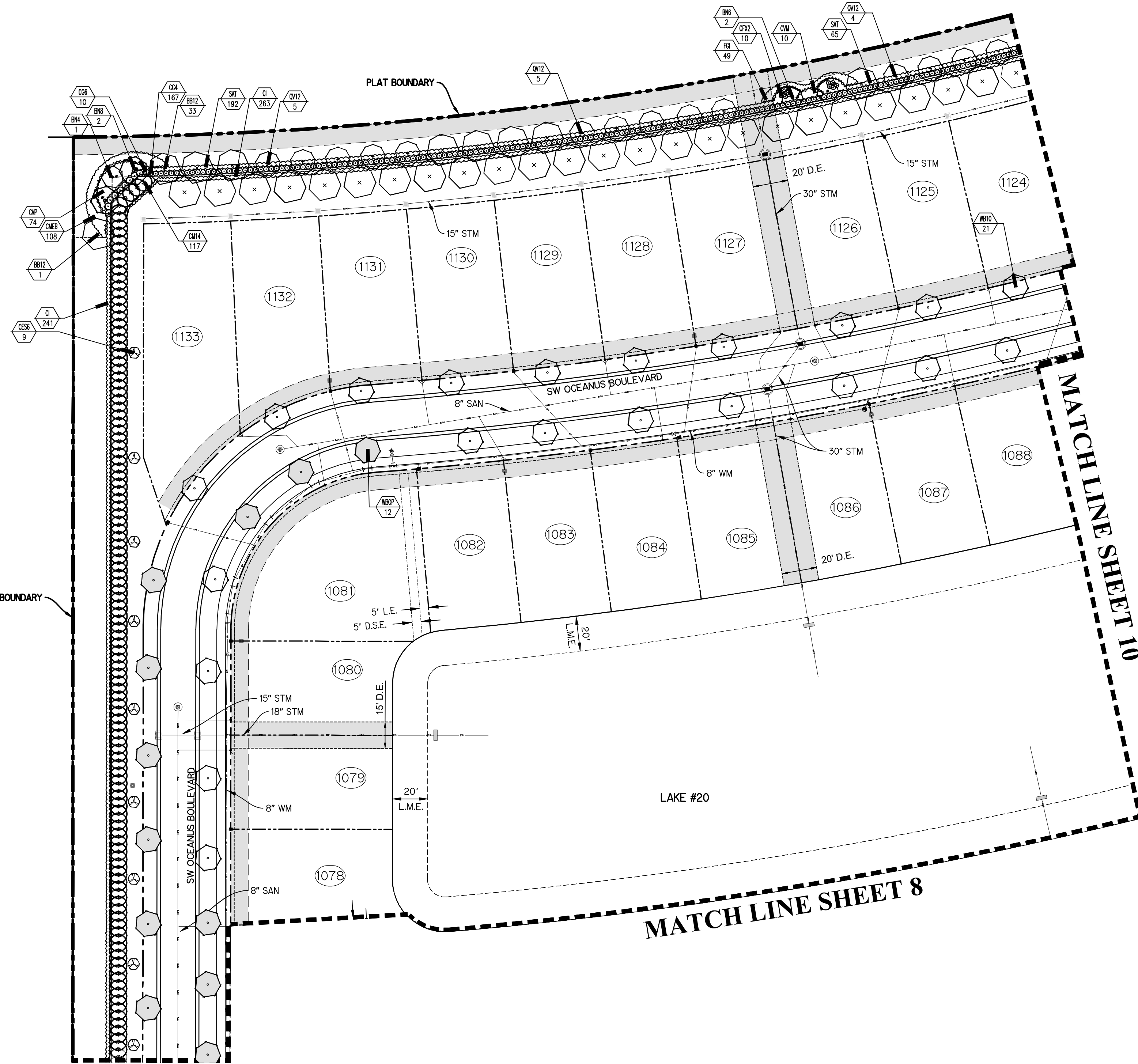
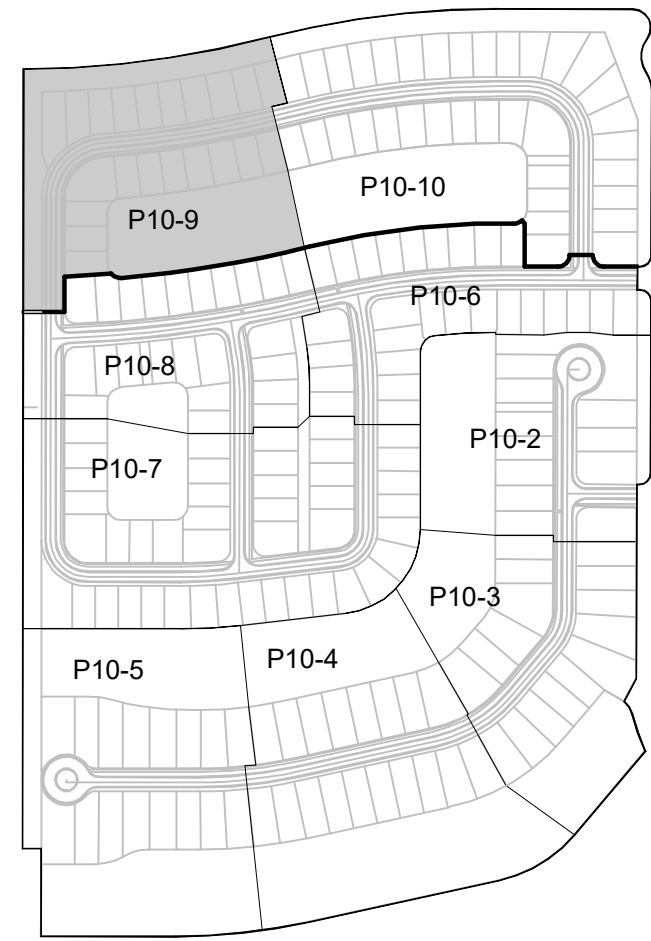
SYM	QTY	NAME	SPECIFICATIONS
<b>TREES</b>			
BSE12	33	Bucida buceras 'Shady Lady' / Black Olive	12" H. x 6" apr. 15" cal. full, B 4 B
*QV12	14	Quercus virginiana / Live Oak	12" x 6" 25" cal. straight trunk, full canopy
<b>PALMS</b>			
BN4	1	Bismarckia nobilis / Bismarck Palm	4' c.t. heavy cal. full frond
BN6	2	Bismarckia nobilis / Bismarck Palm	6' c.t. heavy cal. full frond
BN8	2	Bismarckia nobilis / Bismarck Palm	8' c.t. heavy cal. full frond
CH14	234	Chrysalidopsis / Fireball Palm	14-16" o.d. full to base, dense
UBOP	21	Wodyetia bifurcata / Foxtail Palm	10' c.t. straight trunk, full head unscarred trunk, intact fronds
UBOP	9	Optional Additional Street Tree - Wodyetia bifurcata / Foxtail Palm	10' c.t. straight trunk, full head unscarred trunk, intact fronds
<b>SHRUBS, ACCENTS, AND GROUNDCOVERS</b>			
CP12	10	Cordyline multicaulis 'Meraki' / Ti Plant	3 gal, 16" x 18", full
CG4	167	Clusia guttifera / Small Leaf Clusia	1 gal, 4" x 3", full to base, dense
CG6	10	Clusia guttifera / Small Leaf Clusia	25 gal, 6" x 4", full to base, dense
CI	241	Chrysobalanus icaco / Cocoplum	3 gal, 20" x 20", full to base
CP18	108	Carlisa macrocarpa 'Emerald Blanket' / Dwarf Carlisa	3 gal, 14" x 14", full, dense foliage to base, 24" o.c.
CV1	10	Codiaeum variegatum 'Mammy'	3 gal, 14" x 14", full, 24" o.c.
CV1	14	Codiaeum variegatum 'Petra'	3 gal, 14" x 14", full, 24" o.c.
FC1	49	Ficus 'Green Island' / Green Island Ficus	3 gal, 14" x 18", full, 24" o.c.
SA1	251	Schefflera arboricola 'Trinette' / Variegated Dwarf Schefflera	3 gal, 22" x 20", full, 24" o.c.

NOTE:  
ALL PLANT MATERIAL SHALL MEET OR EXCEED SIZE AND CONTAINER SPECIFICATIONS IN PLANT LIST. PLANT MATERIALS NOT MEETING SPECIFICATIONS WILL BE REJECTED. CONTRACTOR TO COORDINATE AVAILABILITY ISSUES WITH OWNER PRIOR TO COMMENCING WORK.

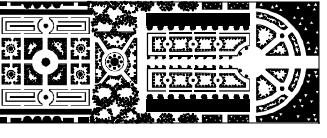
\* DENOTES NATIVE SPECIES

Symbols Legend

D.E.	DRAINAGE EASEMENT	O.E.	OVERHANG EASEMENT
L.M.E.	LAKE MAINTENANCE EASEMENT	G.E.	GRADING EASEMENT
L.M.A.E.	LAKE MAINTENANCE ACCESS EASEMENT	P.S.L.	PORT ST. LUCIE
R.O.W.	RIGHT OF WAY	L.E.	LANDSCAPE EASEMENT
U.E.	UTILITY EASEMENT	D.S.E.	DRAINAGE SWALE EASEMENT
U.E.-R.A.	UTILITY EASEMENT - RESTRICTED AREA (SEE "U.E." PLAT DEDICATION)	O.S.	OPEN SPACE
STM	STORM SEWER LINE WITH MANKLE	SSN	SSN
STM	STORM SEWER LINE WITH CATCH BASIN	1	LOT NUMBER
SAN	SANITARY SEWER LINE WITH MANKLE	⊙	FIRE HYDRANT
WM	WATER MAIN		
W	WATER SVC. TO LOT WITH METER		
W	SANITARY SVC. TO LOT WITH CLEANOUT		
C.O.			



PSL PROJECT NO. P21-008



PARKER-YANNETTE  
design group, inc.

LANDSCAPE ARCHITECTURE  
PLANNING • GRAPHICS  
825 South U.S. Highway One  
Suite 330  
Jupiter, Florida 33477

Telephone: (561) 747-5069  
Fax: (561) 747-2041  
Email: mail@pydg.com

License #LC-0000297

### Plant List (Sheet P10-10 Only)

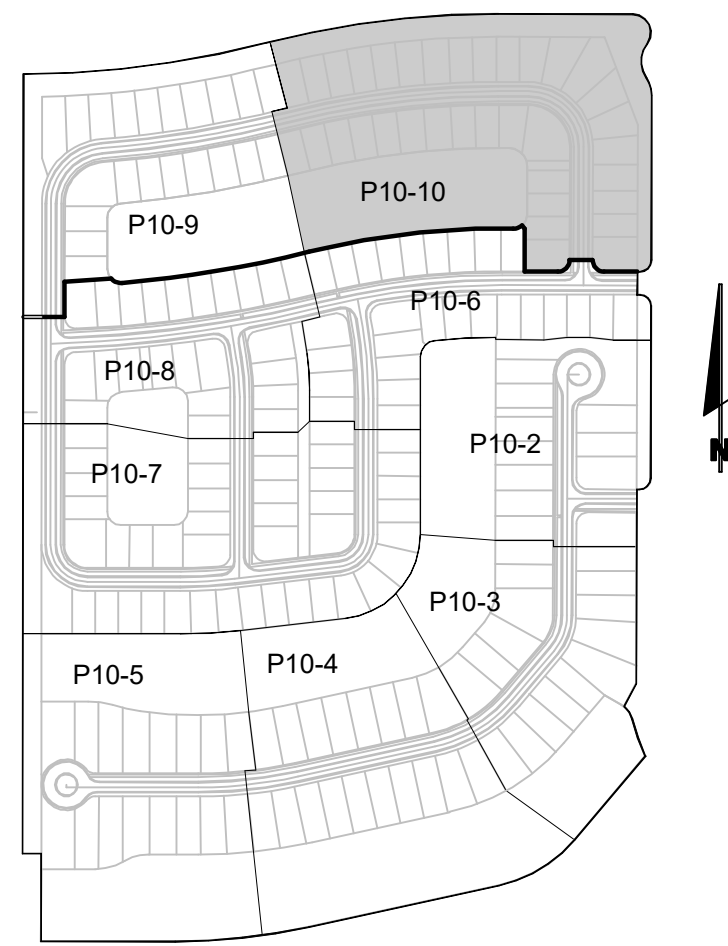
SYM	QTY	NAME	SPECIFICATIONS
<b>TREES</b>			
BAU2	3	Bauhinia blakeana / Hong Kong Orchid	12' x 5', 25' cal, 5' c.t., straight trunk, full canopy
BB2	48	Bucida buceras 'Shady Lady' / Black Olive	12' ht. x 6' spr, 25" cal, full, B 4 B
* QV2	23	Quercus virginiana / Live Oak	12' x 6', 25' cal, straight trunk, full canopy
* QV4	3	Quercus virginiana / Live Oak	14' x 11', 3' cal, straight trunk, full canopy
<b>PALMS</b>			
BN6	4	Bismarckia nobilis / Bismarck Palm	6' c.t., heavy cal, full frond
* SP	3	Sabal palmetto / Cabbage Palm	10' - 22' c.t. Hts., staggered Hts., hurricane cut, straight trunk, 8/10c
WB2	35	Wodyetia bifurcata / Foxtail Palm	10' c.t., straight trunk, full head, unscarred trunk, intact fronds
WBOP	3	Optional Additional Street Tree - Wodyetia bifurcata / Foxtail Palm	10' c.t., straight trunk, full head, unscarred trunk, intact fronds
<b>SHRUBS, ACCENTS, AND GROUNDCOVERS</b>			
CPX2	20	Cordyline fruticosa 'Xerox' / TI Plant	3 gal, 16" x 18", full
CG4	274	Clusia guttifera / Small Leaf Clusia	1 gal, 4" x 3", full to base, dense
CG6	51	Clusia guttifera / Small Leaf Clusia	25 gal, 6" x 4", full to base, dense
CI	313	Chrysobalanus icaco / Coccolum	3 gal, 20" x 20", full to base
CV1	20	Codiaeum variegatum 'Mamey'	3 gal, 14" x 14", full, 24" o.c.
Fdi	98	Ficus 'Green Island' / Green Island Ficus	3 gal, 14" x 18", full, 24" o.c.
BAT	436	Borreria eriopetala 'Trinette' / Variegated Dwarf Schefflera	3 gal, 22" x 20", full, 24" o.c.

NOTE:  
ALL PLANT MATERIAL SHALL MEET OR EXCEED SIZE AND CONTAINER SPECIFICATIONS IN PLANT LIST. PLANT MATERIALS NOT MEETING SPECIFICATIONS WILL BE REJECTED. CONTRACTOR TO COORDINATE AVAILABILITY ISSUES WITH OWNER PRIOR TO COMMENCING WORK.

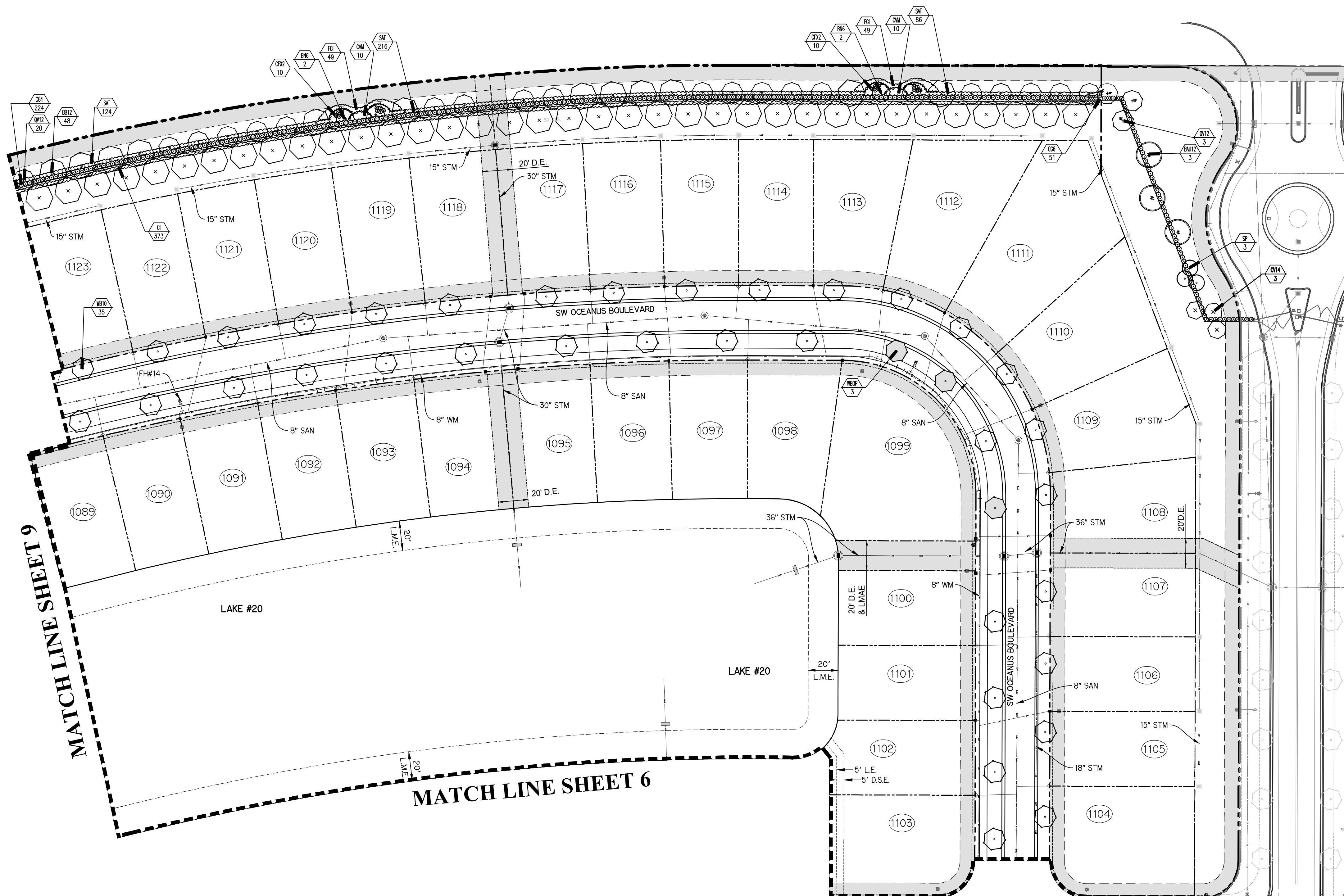
\* DENOTES NATIVE SPECIES

### Symbols Legend

D.E.	DRAINAGE EASEMENT	O.E.	OVERHANG EASEMENT
L.M.E.	LAKE MAINTENANCE EASEMENT	G.E.	GRADING EASEMENT
L.M.A.E.	LAKE MAINTENANCE ACCESS EASEMENT	PSL	PORT ST. LUCIE
R.O.W.	RIGHT OF WAY	L.E.	LANDSCAPE EASEMENT
U.E.	UTILITY EASEMENT	D.S.E.	DRAINAGE SWALE EASEMENT
U.E.-R.A.	UTILITY EASEMENT - RESTRICTED AREA (SEE "U.E." PLAT DEDICATION)	O.S.	OPEN SPACE
STM	STORM SEWER LINE WITH MANHOLE	SN	SIGN
STM	STORM SEWER LINE WITH CATCH BASIN	○	LOT NUMBER
SAN	SANITARY SEWER LINE WITH MANHOLE	⊕	FIRE HYDRANT
WM	WATER MAIN		
W	WATER SVC. TO LOT WITH METER		
W.M.	WATER MAIN		
S	SANITARY SVC. TO LOT WITH CLEANOUT		
C.O.	CLEANOUT		

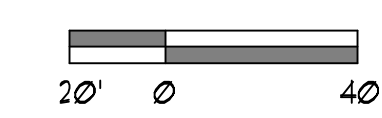


KEY MAP  
N.T.S.



MATCH LINE SHEET 9

MATCH LINE SHEET 6

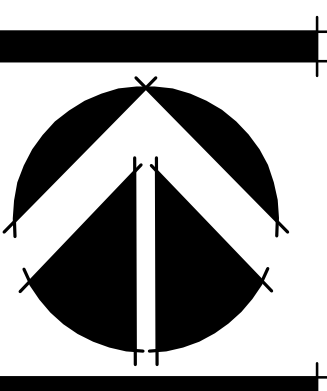


PSL PROJECT NO. P21-008

RIVERLAND - PARCEL 'C' - PLAT 10 REPLAT  
Developer: Riverland Associates III, LLLP  
PORT ST. LUCIE, FLORIDA  
PLAT TEN LANDSCAPE PLAN

DATE: 6.12.20  
DRAWN BY: AJLOTY  
JOB NO.: 18-095  
SCALE: 1" = 40'-0"  
FILENAME: RLC 01 STP

REVISIONS:  
8.6.20 Add proj. num.  
10.21 Replat  
2.0.21 PSL cmnts.



SHEET:  
P10-10