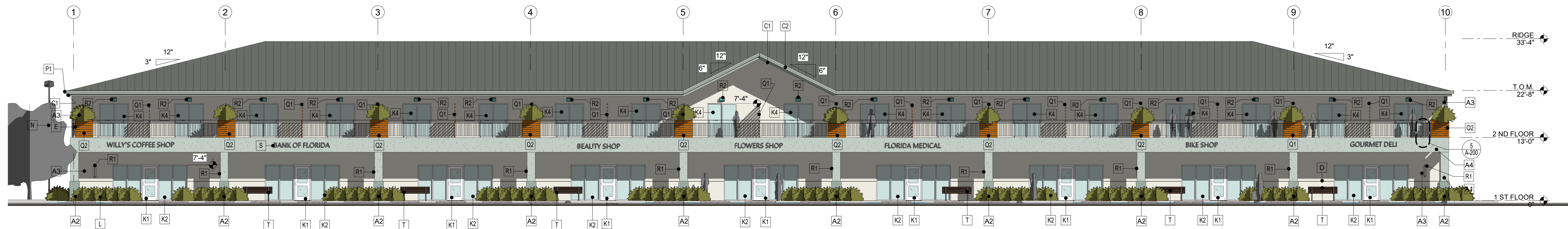
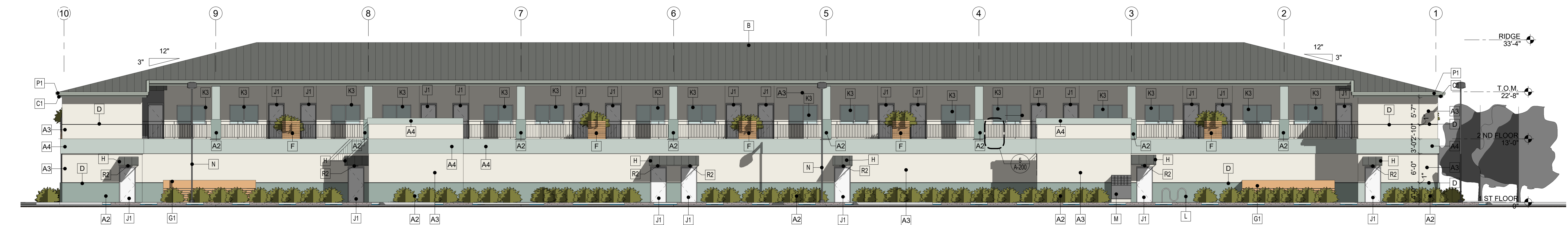


PROPOSED MIXED-USE BUILDING FOR
SAGEVIEW PARTNERS, LLC
2491 SW GRECO LN, PORT SAINT LUCIE, FL 34953

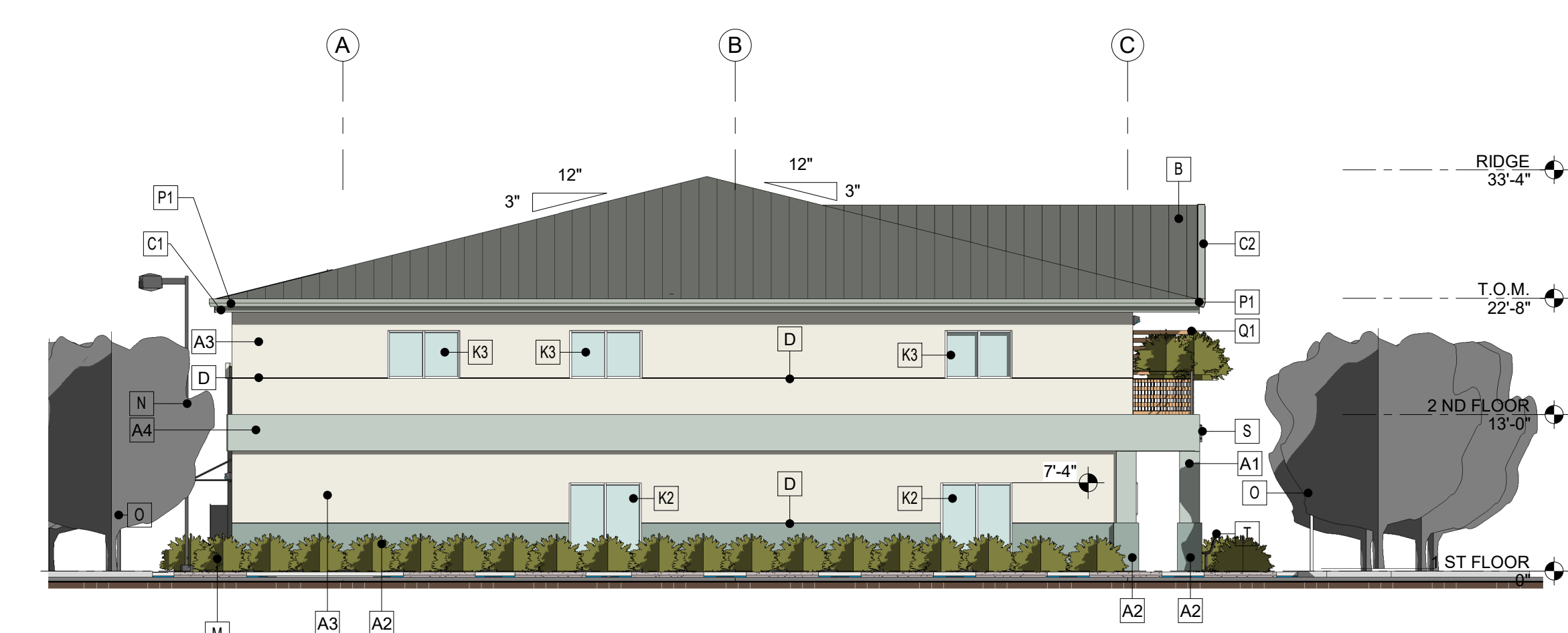
NO.	REVISION	DATE
1	PAZ COMMENTS	10/05/21



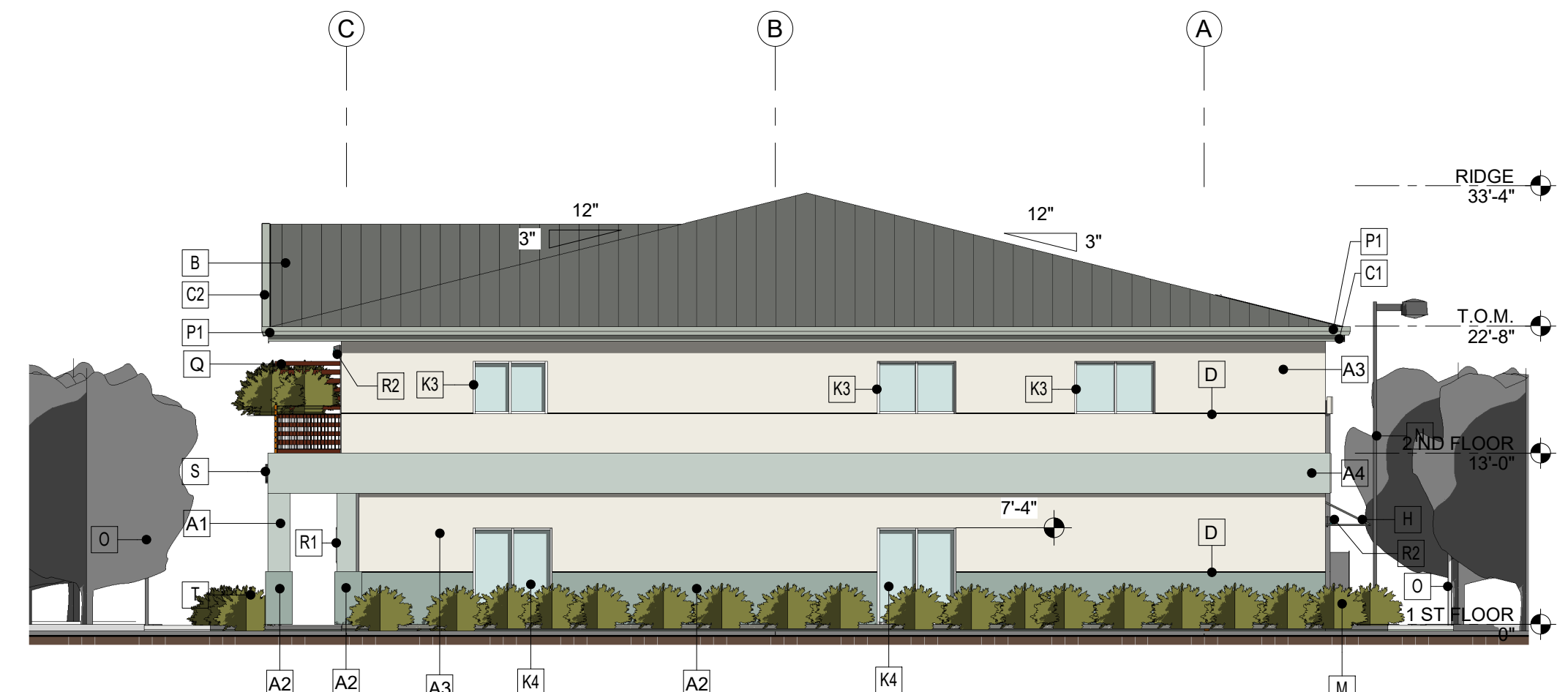
1 SOUTH ELEVATION
3/32" = 1'-0"



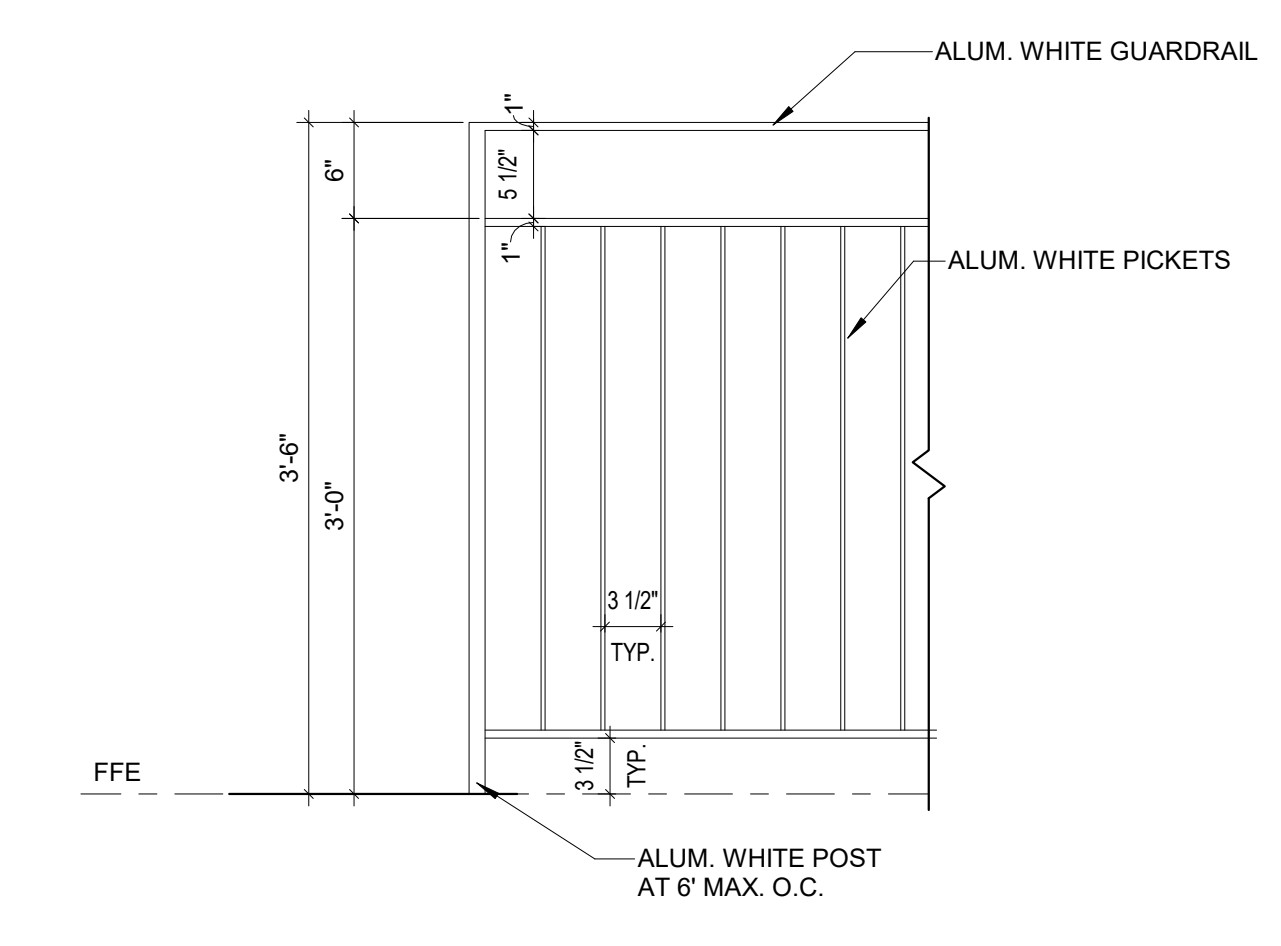
4 NORTH ELEVATION
3/32" = 1'-0"



2 WEST ELEVATION
3/32" = 1'-0"



3 EAST ELEVATION
3/32" = 1'-0"

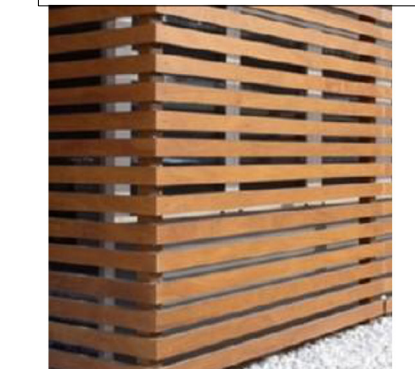


5 ALUM. PICKET BALCONY RAILING DETAIL(TYP)
1" = 1'-0"

STUCCO COLORS

SW 6211 Rainwashed	A1	SW 7008 Alabaster	A3
SW 6213 Halcyon Green	A2		

TREATED WOOD SLATS
CLADDING PLANTERS AND
SCREEN WALL IN BETWEEN
BALCONIES



STANDING SEAM 5V CRIMP
ROOF PANELS



GALVALUME

WALL COLORS AND TRANSPARENCY PERCENTAGE TABLE

COLOR	NORTH 6,690		EAST 1,646 SF		WEST 1,646 SF		SOUTH 6,200 SF	
	AREA (SF)	%	AREA (SF)	%	AREA (SF)	%	AREA (SF)	%
SW 6211 RAINWASHED	987	14.75	265	16.09	265	16.09	962	15.51
SW 6213 HALCYON GREEN	1,058	15.81	260	15.79	260	15.79	572	9.22
SW 7008 ALABASTER	2,486	37.15	981	59.59	981	59.59	2,890	46.61
WINDOWS/STOREFRONT/ SLIDING GLASS DOORS	384	5.74	160	9.72	160	9.72	831	13.40
	576	8.61	0	0	0	0	945	15.24

MATERIAL AND COLOR LEGEND

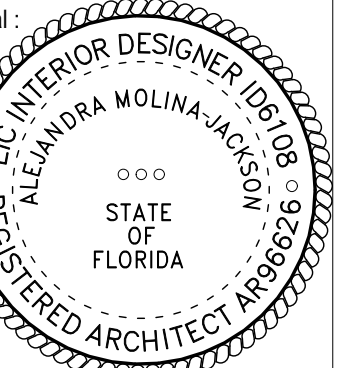
MARK	DESCRIPTION	MATERIAL	COLOR
A1	LIGHT TEXTURE STUCCO	STUCCO	SW 6211 'RAINWASHED'
A2	LIGHT TEXTURE STUCCO	STUCCO	SW 6213 'HALCYON GREEN'
A3	LIGHT TEXTURE STUCCO	STUCCO	SW 7008 'ALABASTER'
A4	LIGHT TEXTURE STUCCO ARCH. BAND	STUCCO	SW 6211 'RAINWASHED'
B	STANDING SEAM 5V CRIMP ROOF	METAL - 24 GA.	'GALVALUME' FINISH
C1	FASCIAL	-	'GRAY' MFR. SIG-200 FINISH
C2	RAKE TRIM	-	'GRAY' MFR. SIG-200 FINISH
D	1" REVEAL	-	SW 7008 'ALABASTER'
E	PICKET RAILING AT BALCONIES	ALUM.	WHITE POWDER COATING
F	-	-	-
G1	TREATED WOOD SLATS CLADDING SCREEN WALL	VINYL	WOOD TEXTURE VINYL
H	CANOPY / AWNING	METAL - 24 GA.	'ASH GRAY' MFR. SIG-200 FINISH
J1	HM DOOR - SINGLE	HM	MFR. STANDARD WHITE
J2	HM DOOR - DOUBLE	HM	MFR. STANDARD WHITE
K1	STOREFRONT DOOR	GLASS/ALUM.	MFR. STD. NON-REFLECTIVE GLASS / CLEAR ANODIZED FRAME
K2	STOREFRONT	GLASS/ALUM.	MFR. STD. NON-REFLECTIVE GLASS / CLEAR ANODIZED FRAME
K3	WINDOWS	GLASS/ALUM.	MFR. STD. NON-REFLECTIVE GLASS / CLEAR ANODIZED FRAME
K4	SLIDING DOORS	GLASS/ALUM.	MFR. STD. NON-REFLECTIVE GLASS / CLEAR ANODIZED FRAME
L	BIKE RACK	GLAV.	GALVANIZED
M	MAILBOX	-	-
N	LIGHT POLE - SEE SHEET AS-003	-	-

MATERIAL AND COLOR LEGEND

MARK	DESCRIPTION	MATERIAL	COLOR
O	SIGNS, SEE SITE PLAN	-	-
P1	GUTTER	METAL	'ASH GRAY' MFR. SIG-200 FINISH
P2	DOWNSPOUT	METAL	MFR. STANDARD WHITE
Q1	TREATED WOOD SLATS CLADDING SCREEN WALL	VINYL	WOOD TEXTURE VINYL
Q2	TREATED WOOD SLATS CLADDING PLANTERS	VINYL	WOOD TEXTURE VINYL
R1	WALL SCONCE LIGHTING FIXTURE	-	MFR. STANDARD WHITE
R2	WALL PACK LIGHTING FIXTURE	-	MFR. STANDARD WHITE
S	SIGNAGE N.I.C.	-	-
T	BENCH	METAL/VINYL	BACK FRAME / WOOD TEXTURE VINYL PLANKS

NOTE:

- THE ELEVATION DESIGN AND COLORS MAY NOT BE MODIFIED WITHOUT APPROVAL FROM THE SITE PLAN REVIEW COMMITTEE (SPRC) OR PLANNING AND ZONING DEPARTMENT.
- NO MECHANICAL EQUIPMENT SHALL BE VISIBLE.
- CITYWIDE DESIGN STANDARDS ARCHITECTURAL ELEMENTS: STANDING SEAM METAL ROOF 2) PREDOMINANTLY VERTICAL, RECTANGULAR WINDOWS 3) SQUARE COLUMNS 4) WOOD STYLE RAILING (PICKET) 5) COLONNADE 6) BALCONIES 7) BRICK PAVERS (MIN 300 SF), 8) CANOPY / AWNINGS.



NAME: ALEJANDRA MOLINA-JACKSON
LICENSE #: AR96626
DATE: 08/30/2021
SCALE: As Indicated
DRAWN: WA
JOB: 20-000028
SHEET TITLE: EXTERIOR ELEVATIONS
SHEET #: **A-200**
CITY OF PORT ST. LUCIE PROJECT #: P21-056