

S. W. GATLIN BLVD.

TREE DATA BLOCK

REQUIRED BUFFER PLANTING	PROPOSED BUFFER PLANTING
1460 l. ft. of required perimeter buffer minus 70 ft. access way = 1390 l. ft. of buffer. one tree for every 30' of required buffer = 46.33 = 47 required trees.	48
one shrub for every 2' of required buffer = 1460 l. ft. minus 70 ft. access way 1390 l. ft. divided by 2 = 695 required shrubs	696 shrubs
REQUIRED PARKING LOT ISLAND TREES	PARKING LOT ISLAND TREES
one tree required for each parking lot islands = 7 parking lot islands required	7 trees
REQUIRED BUILDING FACADE PLANTING	PROPOSED FOUNDATION PLANTING
163 l. ft. of required building foundation planting one tree for every 30' of required buffer = 163 l. ft. divided by 30 = 5 required trees.	6
one shrub per 2' of foundation = l. ft. 163 divided by 2 = 67.75 = 81 required shrubs	154 shrubs

ADDITIONAL REQUIREMENTS

- 50% of trees shall be native varieties
- 20% of trees shall be flowering trees
- 5 varieties of trees if over 41 trees required
- * identifies native varieties on plant list
- ∅ identifies drought tolerant plants
- 0% of required buffer trees are palms
- 100% of trees are native varieties
- 20% of buffer trees are flowering trees
- 5 varieties are proposed

LANDSCAPE CONTRACTOR NOTES

ALL PLANT MATERIAL SHALL BE FLORIDA #1 OR BETTER. PLANTS WILL BE INSPECTED BY THE LANDSCAPE ARCHITECT. THOSE PLANTS THAT DO NOT MEET THE SPECIFICATIONS IN SIZE OR GRADE WILL BE REJECTED.

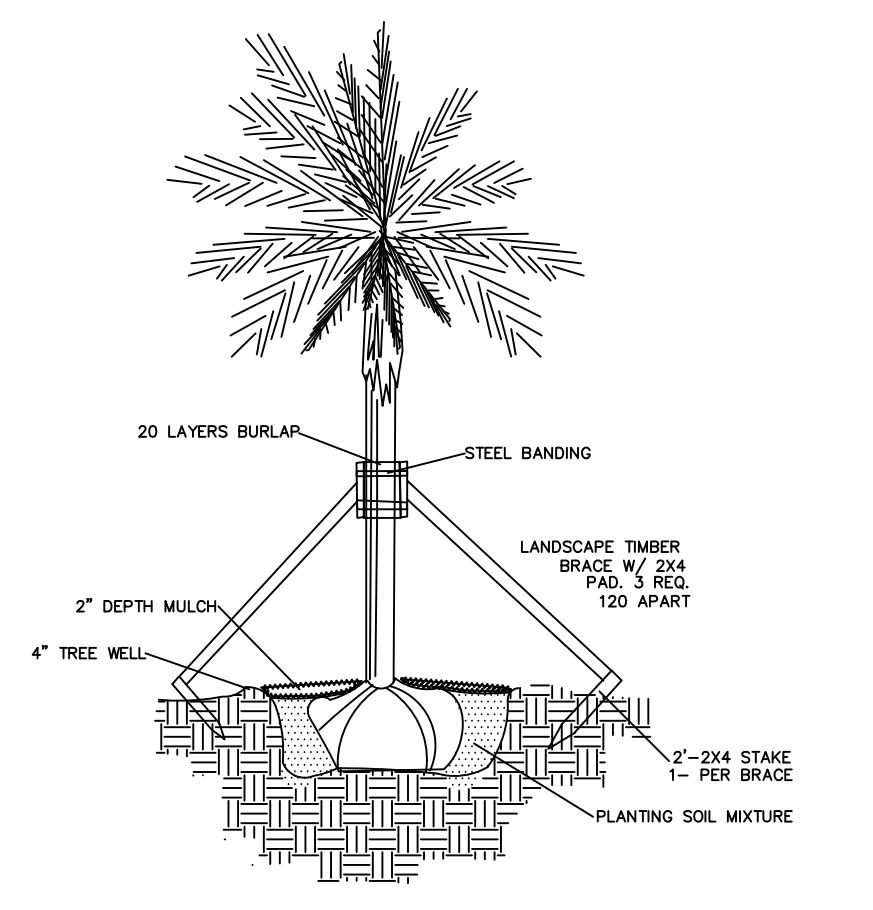
THE LANDSCAPE CONTRACTOR SHALL HAVE A COMPETENT FOREMAN IDENTIFIED AT THE BEGINNING OF THE JOB WHO WILL BE ON THE JOB THROUGHOUT THE INSTALLATION OF PLANTING. THIS PERSON SHALL BE RESPONSIBLE FOR DIRECTING THE CREW AND ANY SUBCONTRACTORS WORKING FOR THE LANDSCAPE CONTRACTOR AND SHALL ACT AS THE LANDSCAPE CONTRACTOR'S REPRESENTATIVE TO THE OWNER AND LANDSCAPE ARCHITECT.

THE LANDSCAPE CONTRACTOR SHALL LAY OUT AREAS TO BE PLANTED AND ARRANGE A MEETING WITH THE LANDSCAPE ARCHITECT FOR APPROVAL BEFORE PLANTING.

THE LANDSCAPE CONTRACTOR SHALL BE RESPONSIBLE FOR THE PREPARATION OF ALL AREAS TO RECEIVE PLANTS. ALL PLANTS, GRASSES AND WEEDS SHALL BE REMOVED BY HAND, ROOTKILLING OR BY SCRAPING. GROUND IS TO BE LEVELED AND WATERED IF DRY. FILL TREE AND PALM HOLES WITH WATER PRIOR TO PLANTING. IF WATER DOES NOT COMPLETELY DRAIN FROM HOLE WITHIN FOUR HOURS, CONTACT THE LANDSCAPE ARCHITECT FOR APPROVAL BEFORE PLANTING. PLANT HOLES ARE TO BE BACKFILLED WITH A HOMOGENEOUS SOIL MIX CONSISTING OF 2 PARTS SANDY TOPSOIL, 2 PARTS PEAT MOSS AND 1 PART COW MANURE OR MILKORGANITE. AGRIFORM 20-10-15 PLANTING TABLETS SHALL BE ADDED TO EACH PLANT HOLE ACCORDING TO THE MANUFACTURER'S RECOMMENDED APPLICATION RATES. BACKFILL HALF WAY UP THE ROOTBALL, PLACE THE TABLETS BESIDE THE ROOTBALL, ABOUT 1 INCH FROM THE ROOT TIPS. DO NOT PLACE TABLETS IN BOTTOM OF HOLE.

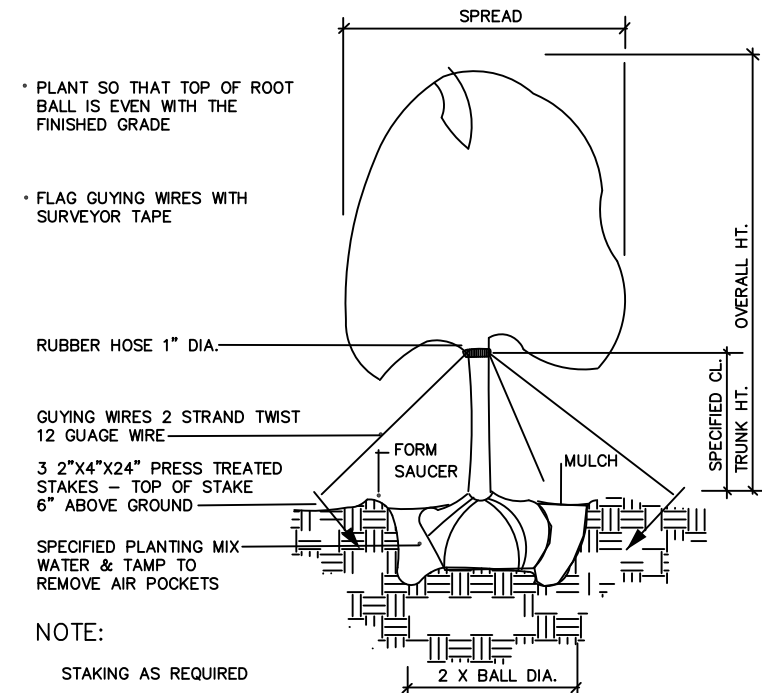
THE CONTRACTOR SHALL PROVIDE THE SPECIFIED MULCH. INSTALL 3" DEPTH OF SPECIFIED MULCH TO ALL AREAS INDICATED ON THE PLAN. THE MULCH SHALL BE INSTALLED AS SHOWN ON THE DETAILS TO ENSURE THAT IT IS NOT INSTALLED TOO CLOSE TO THE PLANT TRUNK OR STEM.

THE LANDSCAPE CONTRACTOR SHALL GUARANTEE THAT ALL PLANT MATERIAL SHALL BE ALIVE AND THRIVING FOR A PERIOD OF ONE YEAR FOLLOWING PLANTING. THE LANDSCAPE CONTRACTOR SHALL REPLACE DEAD OR SICK PLANTS AT NO ADDITIONAL COST TO THE OWNER.



PALM PLANTING

SCALE: NOT TO SCALE



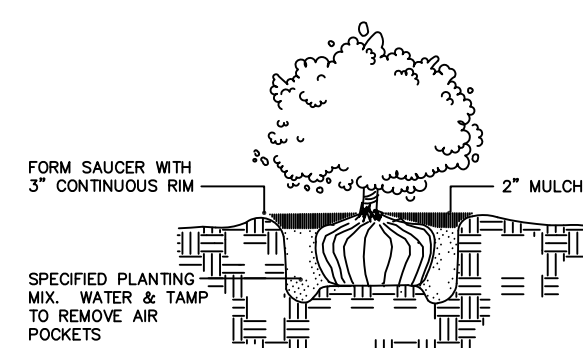
TREE PLANTING - GUY WIRES

SCALE: NOT TO SCALE

PLANT MATERIAL LIST

TREES & PALMS		(* indicates native tree)		
Code Name	Quantity	Scientific Name	Common Name	Planting Size
* AR	15	ACER RUBRUM	RED MAPLE	12' X 6', 4'CT ± 1/2"DBH
* CD	12	COCCOLOBA DIVERSIFOLIA	PIGEON PLUM	12' X 6', 4'CT ± 1/2"DBH
* IXA	24	ILEX X ATTENUATA	EAST PATLATKA HOLLY	12' X 6', 4'CT ± 1/2"DBH
* PE	13	PINUS ELLIOTTI	PINE	12' X 6', 4'CT ± 1/2"DBH
WB	8	WODYETIA BIFURCATA	FOXTAIL PALM	15' OA, 12' DBH
SHRUBS & GROUNDCOVERS		(* indicates native shrub or ground cover)		
Code Name	Quantity	Scientific Name	Common Name	Planting Size
* CI	635	CHRYSOBALANUS ICACO	RED TIP COCCOPLUM	20" X 20" #3, 2' OC
LJ	128	LIGISTRUM JAPONICUM	WAX LEAF LIGISTRUM	20" X 20" #3, 2' OC
* MC	61	MUHLBERGIA CAPILLARIS	PINK MUHLY GRASS	18" X 18" #3, 2' OC
OTHER MATERIALS				
MULCH	17	CU. YDS. ENVIRD MULCH (EST.)		
SDD	10,000	SQ. FT. BAHIA SDD (EST.)		

ALL PLANT MATERIAL TO BE INSTALLED ARE TO CONFORM TO THE STANDARDS OF FLORIDA NO. 1 OR BETTER ALL LANDSCAPING TO BE IRRIGATED BY AUTOMATIC MEANS PARCEL SHALL BE MAINTAINED FREE OF ALL FEPPC CATEGORY 1 SPECIES

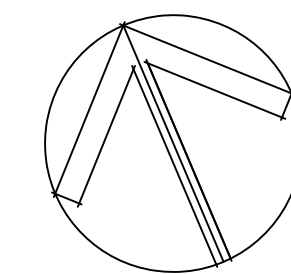


SHRUB PLANTING

P122-155

NOTES:

- NO LANDSCAPING SHALL BE PLANTED IN A MANNER THAT WOULD ADVERSELY AFFECT UTILITY EASEMENTS. LANDSCAPING SHALL BE IN COMPLIANCE WITH CHAPTER 154 OF THE CITY OF PORT ST. LUCIE CODE OF ORDINANCES, PSLUSD TECHNICAL SPECIFICATIONS AND POLICIES.
- ALL LANDSCAPING WITHIN CITY UTILITY EASEMENTS SHALL COMPLY WITH PSLUSD TECHNICAL SPECIFICATIONS AND CODES.
- ALL LANDSCAPING SHALL MEET THE LATEST PSLUSD LANDSCAPING POLICY AND SHALL NOT BE PLACED IN A MANNER THAT WOULD CREATE CONFLICTS WITH THE INTENDED OPERATION AND MAINTENANCE OF ANY EXISTING UTILITY.
- TREES SHALL NOT BE PLANTED WITHIN 10 FEET OF ANY PSLUSD UNDERGROUND INFRASTRUCTURE.
- NO LANDSCAPING OTHER THAN SDD GRASSES SHALL BE LOCATED WITHIN 5' OF A PSLUSD APPURTENANCE SUCH AS WATER METER ASSEMBLY, BACK FLOW DEVICE, FIRE HYDRANT OR SEWER CLEANDUT, ETC.



REV. 5/23/23
REV. 4/27/23
REV. 3/28/23
REV. 1/28/23
REV. 9/16/22
DATE: 4/30/22
SCALE 1" = 20'



LANDSCAPE PLAN

CAR WASH

PORT ST. LUCIE, FLORIDA

DANIEL J. SUGG, LANDSCAPE ARCHITECT, FL. LIC. #766
POST OFFICE BOX 335, JENSEN BEACH, FLORIDA 34958
TEL. 772-485-1776 danlandarch@gmail.com