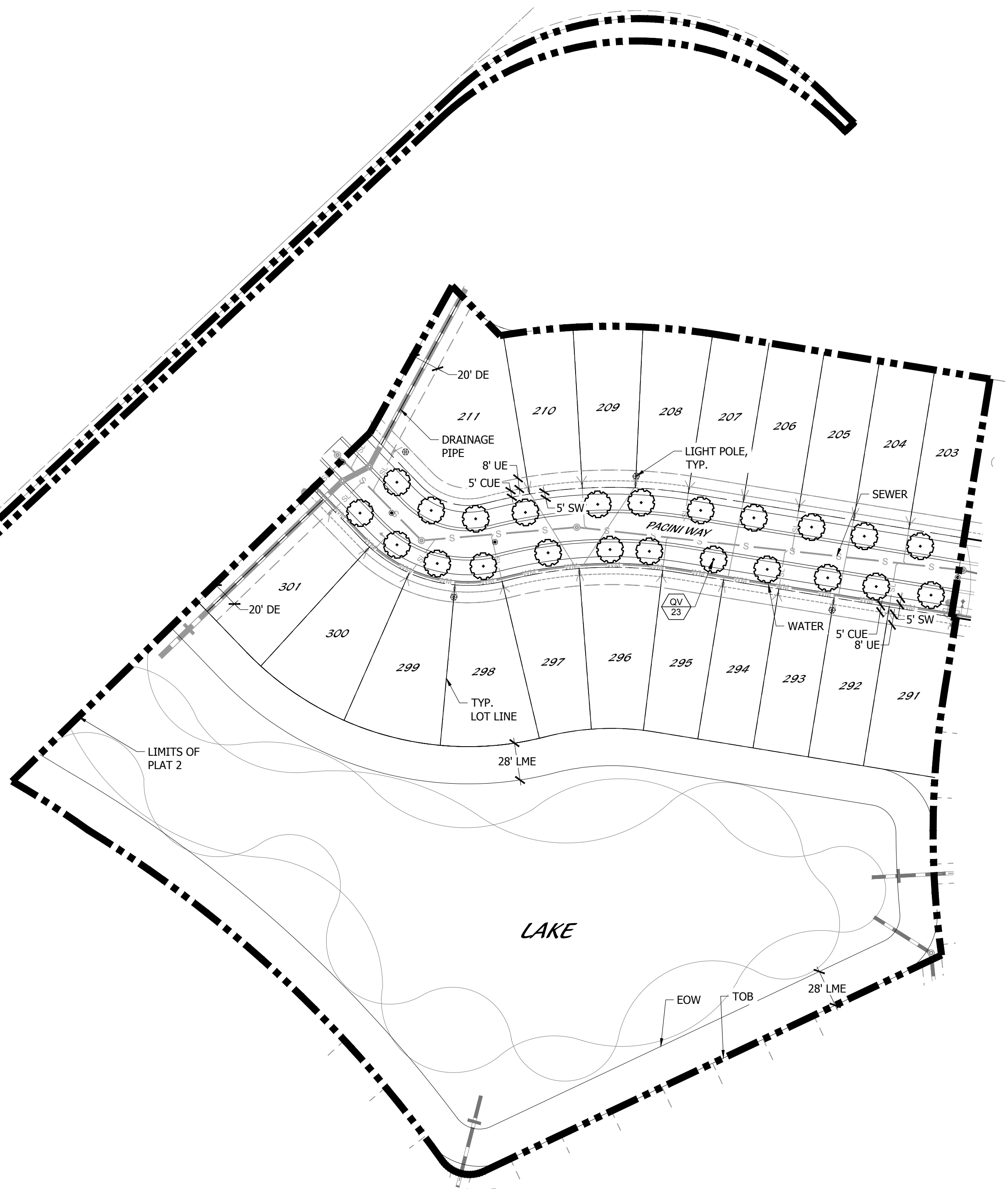
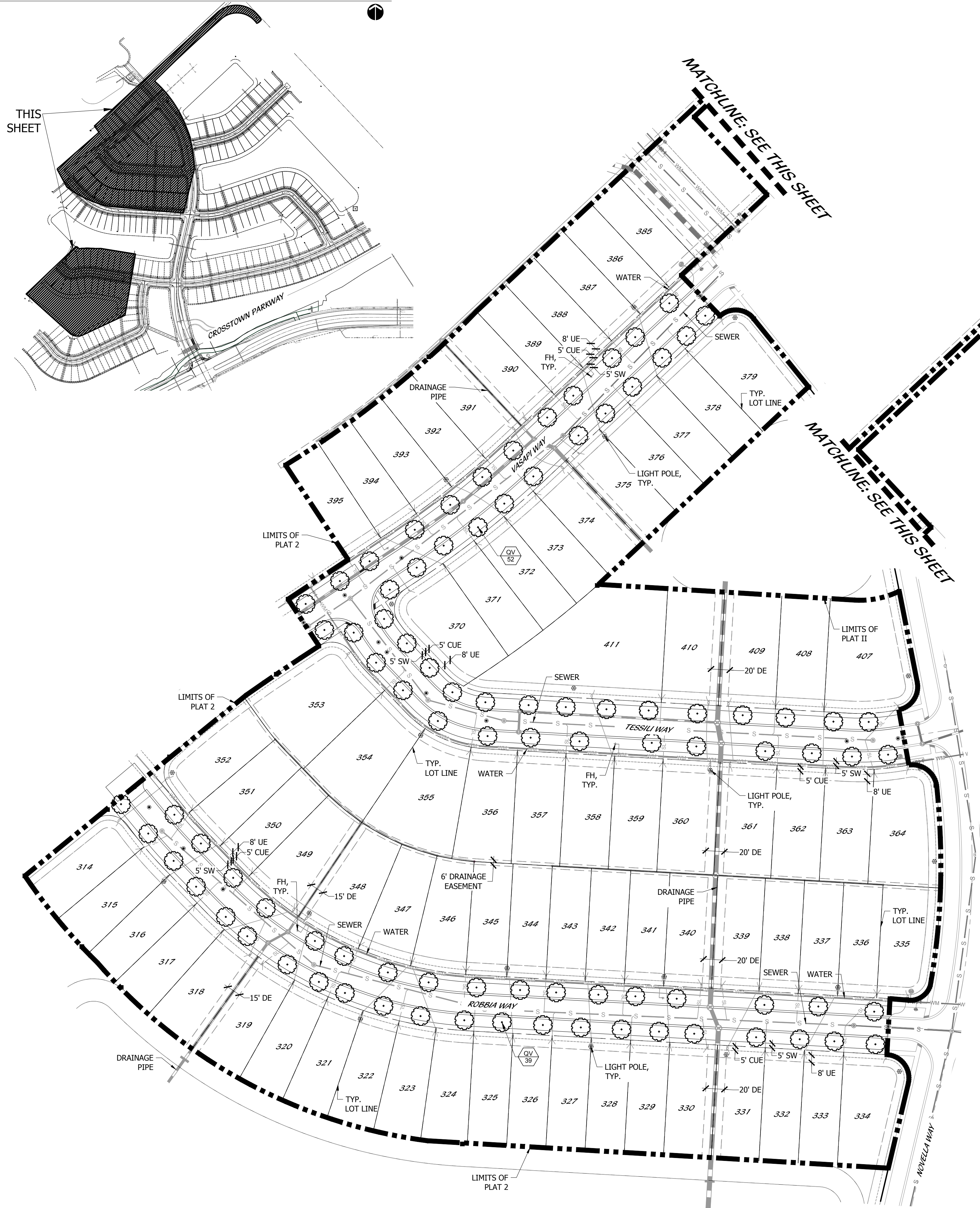
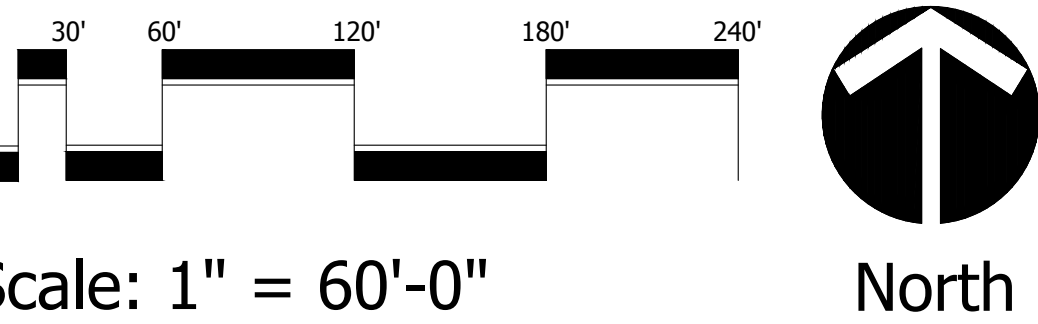


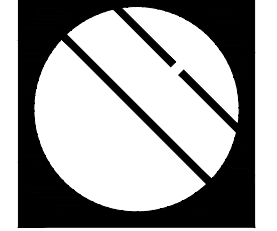
KEY MAP



PSL PROJ #: P19-005
POD C PLAT II
LANDSCAPE PLANS



Scale: 1" = 60'-0"



Cotleur & Hearing

Landscape Architects
Land Planners
Environmental Consultants

1934 Commerce Lane
Suite 1
Jupiter, Florida 33458

www.cotleurhearing.com
Lic# LC-C000239

VERANO SOUTH
Port Saint Lucie, Florida

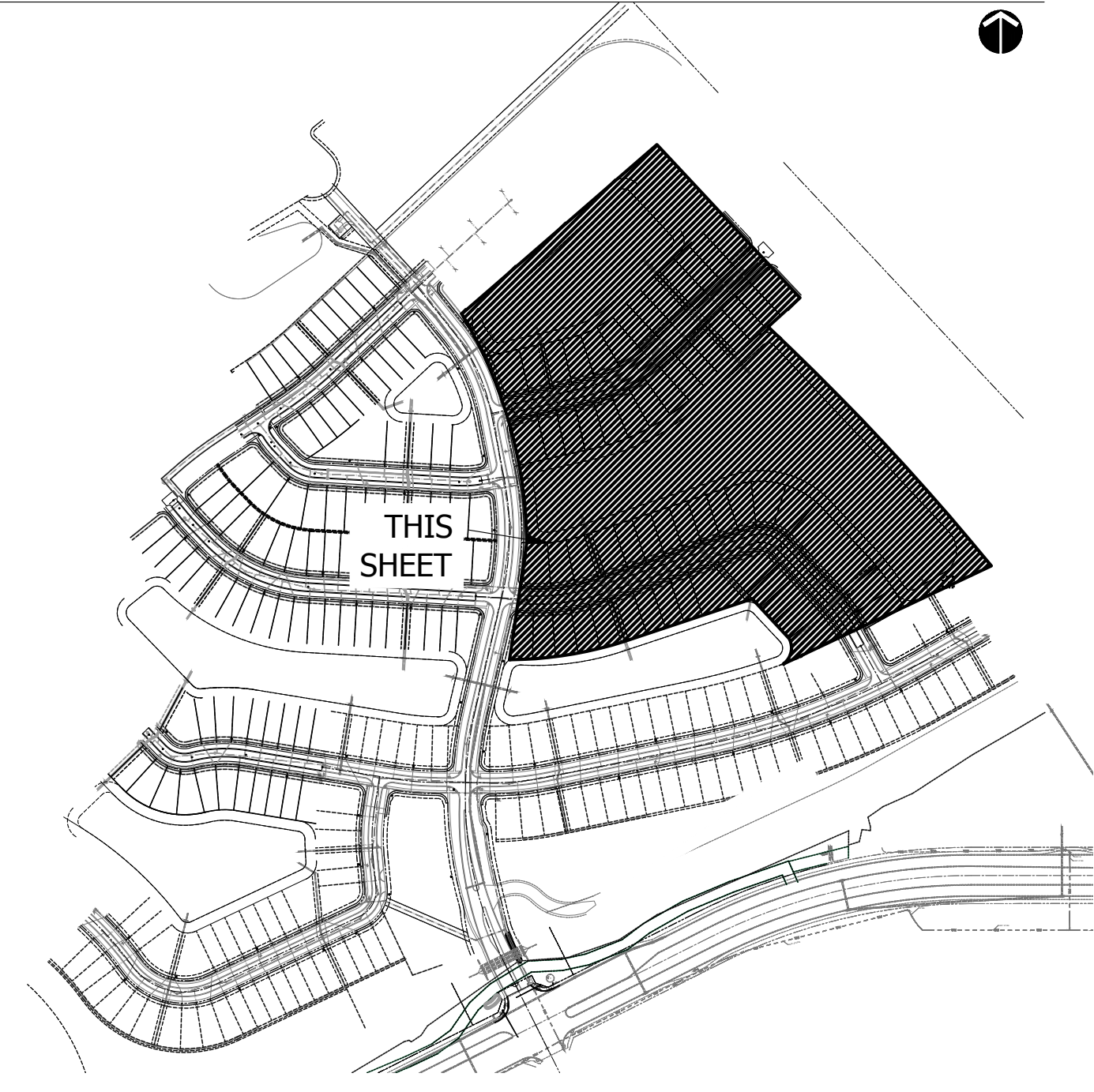
DESIGNED	LAH
DRAWN	LAH
APPROVED	DTS
JOB NUMBER	17-0810
DATE	01-16-19
REVISIONS	02-27-19
	04-17-19
	04-25-19

SHEET 1 OF 3

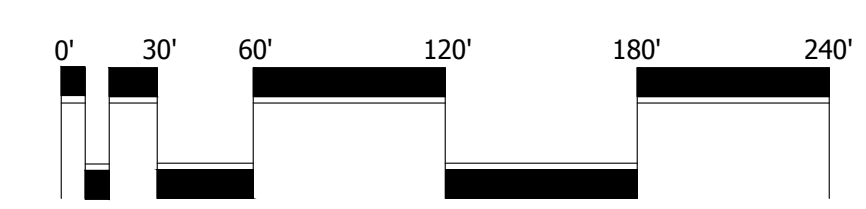
© COTLEUR & HEARING, INC.
These drawings are the property of the architect and are not to be used for extensions or on other projects except by agreement in writing with the architect. Immediately report any discrepancies to the architect.



KEY MAP



PSL PROJ #: P19-005
POD C PLAT II
LANDSCAPE PLANS



Scale: 1" = 60'-0"





Cotleur & Hearing
Landscape Architects
Land Planners
Environmental Consultants
1934 Commerce Lane
Suite 1
Jupiter, Florida 33458
www.cotleurhearing.com
Lic# LC-C000239

VERANO SOUTH

Port Saint Lucie, Florida

DESIGNED	LAH
DRAWN	LAH
APPROVED	DTS
JOB NUMBER	17-0810
DATE	01-16-19
REVISIONS	02-27-19
	04-17-19
	04-25-19

LANDSCAPE SPECIFICATIONS

1. GENERAL LANDSCAPE REQUIREMENTS

LANDSCAPE CONTRACT WORK INCLUDES, BUT IS NOT LIMITED TO, SOIL PREPARATION, FINE OR FINISH GRADING, FURNISHING AND INSTALLING PLANT MATERIAL, WATERING, STAKING, GUYING AND MULCHING.

PLANT SIZE AND QUALITY

TREES, PALMS, SHRUBS, GROUNDCOVERS:
PLANT SPECIES AND SIZES SHALL CONFORM TO THOSE INDICATED ON THE DRAWINGS. NOMENCLATURE SHALL CONFORM TO STANDARD PLANT NAMES, 1942 EDITION. ALL NURSERY STOCK SHALL BE IN ACCORDANCE WITH GRADES AND STANDARDS FOR NURSERY PLANTS PARTS 1 & 2, LATEST EDITION PUBLISHED BY THE FLORIDA DEPARTMENT OF AGRICULTURE AND CONSUMER SERVICES. UNLESS SPECIFIED OTHERWISE, ALL PLANTS SHALL BE FLORIDA GRADE NUMBER 1 OR BETTER AS DETERMINED BY THE FLORIDA DIVISION OF PLANT INDUSTRY. TIGHTLY KNIT PLANT, SO TRAINED OR FAVORED IN ITS DEVELOPMENT THAT FIRST APPEARANCE IS UNQUESTIONABLE AND IT IS OUTSTANDINGLY SUPERIOR IN FORM, NUMBER OF BRANCHES, COMPACTNESS AND SYMMETRY. ALL PLANTS SHALL BE FRESHLY DUG, SOUND, HEALTHY, VIGOROUS, WELL BRANCHED AND FREE OF DISEASE AND INSECT EGGS AND LARVAE AND SHALL HAVE ADEQUATE ROOT SYSTEMS. TREES AND PALMS FOR PLANTING ROWS SHALL BE UNIFORM IN SIZE AND SHAPE. ALL MATERIALS SHALL BE SUBJECT TO APPROVAL BY THE LANDSCAPE ARCHITECT. THE PLANTS FURNISHED SHALL BE NONE FLORIDA GRADE NUMBER 1. PLANTS SHALL BE PRUNED PRIOR TO DELIVERY ONLY UPON THE APPROVAL OF THE LANDSCAPE ARCHITECT.

ALL CONTAINER GROWN PLANT MATERIAL SHALL BE HEALTHY, VIGOROUS, WELL-ROOTED PLANTS AND ESTABLISHED IN THE CONTAINER IN WHICH THEY ARE SOLD. THE PLANTS SHALL HAVE TOPS OF GOOD QUALITY AND BE IN A HEALTHY GROWING CONDITION.

AN ESTABLISHED CONTAINER GROWN PLANT SHALL BE TRANSPLANTED INTO A CONTAINER AND GROWN IN THAT CONTAINER SUFFICIENTLY LONG ENOUGH FOR THE NEW FIBROUS ROOTS TO HAVE DEVELOPED SO THAT THE ROOT MASS WILL RETAIN ITS SHAPE AND HOLD TOGETHER WHEN REMOVED FROM THE CONTAINER.

MULCH SHALL BE SHREDDED CYPRESS MULCH. ALL MULCH IS TO BE APPLIED TO A DEPTH OF 3" EXCEPT FOR THOSE SPECIFIC SITUATIONS SHOWN BELOW IN SECTIONS 2.3 & 4.

FERTILIZER IN BACKFILL MIXTURE FOR ALL PLANTS SHALL CONSIST OF MILORIGANITE ACTIVATED SLUDGE MIXED WITH THE BACKFILL AT A RATE OF NOT LESS THAN 50 LBS. PER CUBIC YARD.

FERTILIZER FOR TREES AND SHRUBS MAY BE TABLET FORM OR GRANULAR. GRANULAR FERTILIZER SHALL BE UNIFORM IN COMPOSITION, DRY AND FREE-FLOWING. THIS FERTILIZER SHALL BE DELIVERED TO THE SITE IN THE ORIGINAL UNOPENED BAGS, EACH BEARING THE MANUFACTURER'S STATEMENT OF ANALYSIS, AND SHALL MEET THE FOLLOWING REQUIREMENTS: 16% NITROGEN, 7% PHOSPHORUS, 12% POTASSIUM, PLUS ROTTEN TABLET. TABLETS SHALL BE 2 1/2" DIAMETER. 2 1/2" DIAMETER SIZE SHALL MEET THE FOLLOWING REQUIREMENTS: 20% NITROGEN, 10% PHOSPHORUS AND 5% POTASSIUM.

FERTILIZER WILL BE APPLIED AT THE FOLLOWING RATES:

PLANT SIZE 16-7-12 AGRIFORM TABLETS* (21 GRAM)

1 GAL. 1 1/4 LB. 1

7-15 GAL. 1 1/2 LB. 3

1"-6" CALIPER 2 LBS./1" CALIPER 2 PER 1" CALIPER

6" AND LARGER 3 LBS./1" CALIPER 2 PER 1" CALIPER

(*) TABLETS TO BE INSTALLED IN TOP 6-8"

"FLORIDA EAST COAST PALM SPECIAL" SHALL BE APPLIED TO ALL PALMS AT INSTALLATION AT A RATE OF .5 LB. PER INCH OF TRUNK UNLESS OTHERWISE SPECIFIED.

FIELD GROWN TREES AND PALMS PREVIOUSLY ROOT PRUNED SHALL OBTAIN A ROOT BALL WITH SUFFICIENT ROOTS FOR CONTINUED GROWTH WITHOUT RESULTING IN DAMAGE TO THE PLANT.

CONTRACTOR SHALL NOT MARK OR SCAR TRUNK IN ANY FASHION.

PLANTS SHALL BE WATERED AS NECESSARY OR WITHIN 24 HOURS AFTER NOTIFICATION BY THE LANDSCAPE ARCHITECT.

THE LOCATIONS OF PLANTS, AS SHOWN IN THESE PLANS, ARE APPROXIMATE. THE FINAL LOCATIONS MAY BE ADJUSTED TO ACCOMMODATE UNFORESEEN FIELD CONDITIONS. MAJOR ADJUSTMENTS TO THE LAYOUT ARE TO BE APPROVED BY THE LANDSCAPE ARCHITECT.

ALL PLASTIC FABRIC SHALL BE REMOVED FROM PLANT MATERIAL AT TIME OF INSTALLATION.

ALL TREES MUST BE STAKED AS SHOWN ON THE PLANTING DETAILS WITHIN 24 HOURS OF PLANTING. STAKES TO REMAIN FOR A MINIMUM OF 9 MONTHS, BUT NO LONGER THAN 18 MONTHS. CONTRACTOR IS RESPONSIBLE FOR MAINTENANCE AND REMOVAL OF THE STAKES.

ALL TREES MUST BE PRUNED AS PER LANDSCAPE ARCHITECT'S DIRECTION. SABAL PALMS MAY BE HURRICANE CUT.

ALL SHRUBS, TREES AND GROUND COVER WILL HAVE IMPROVED SOIL AS PER PLANTING SOD NOTES. THE SOILS SHALL BE PLACED IN THE HOLE DURING PLANTING. TOP DRESSING ONLY IS NOT ACCEPTABLE.

DO NOT ALLOW AIR POCKETS TO FORM WHEN BACKFILLING. ALL TREES SHALL BE SPIKED IN UTILIZING WATER AND A TREE BAK.

THE LANDSCAPE CONTRACTOR SHALL WATER, MULCH, WEED, PRUNE, AND OTHERWISE MAINTAIN ALL PLANTS, INCLUDING SOD, UNTIL COMPLETION OF CONTRACT OR ACCEPTANCE BY LANDSCAPE ARCHITECT. SETTLED PLANTS SHALL BE RESET TO PROPER GRADE, PLANTING SAUCERS RESTORED, AND DEFECTIVE WORK CORRECTED.

THE LANDSCAPE CONTRACTOR SHALL AT ALL TIMES KEEP THE PREMISES FREE FROM ACCUMULATION OF WASTE MATERIALS OR DEBRIS CAUSED BY HIS CREWS DURING THE PERFORMANCE OF THE WORK. UPON COMPLETION OF THE WORK, THE CONTRACTOR SHALL PROMPTLY REMOVE ALL WASTE MATERIALS, DEBRIS, UNUSED PLANT MATERIAL, EMPTY PLANT CONTAINERS AND ALL EQUIPMENT FROM THE PROJECT SITE.

UPON COMPLETION OF THE WORK, THE LANDSCAPE CONTRACTOR SHALL NOTIFY THE LANDSCAPE ARCHITECT AND REQUEST A FINAL INSPECTION. ANY ITEMS THAT ARE JUDGED INCOMPLETE OR UNACCEPTABLE BY THE LANDSCAPE ARCHITECT OR OWNERS REPRESENTATIVE SHALL BE PROMPTLY CORRECTED BY THE LANDSCAPE CONTRACTOR.

THE LANDSCAPE CONTRACTOR SHALL GUARANTEE ALL PLANT MATERIAL FOR A PERIOD OF SIX (6) MONTHS FROM THE DATE OF CONDITIONAL ACCEPTANCE IN WRITING FROM THE LANDSCAPE ARCHITECT. AT THE TIME OF CONDITIONAL ACCEPTANCE, THE SIX (6) MONTH PERIOD SHALL COMMENCE. ANY MATERIALS WHICH HAVE DIED DURING THIS PERIOD SHALL BE PROMPTLY REPLACED WITH SPECIMENS THAT MEET THE MINIMUM REQUIREMENTS CALLED FOR ON THE DRAWINGS. THE LANDSCAPE CONTRACTOR SHALL NOT BE HELD RESPONSIBLE FOR THE DEATH OR DAMAGE RESULTING FROM LIGHTNING, VANDALISM, AND AUTOMOBILES OR FROM NEGLIGENCE BY THE OWNER. CONTRACTOR SHALL BE RESPONSIBLE FOR WATERING AND OTHERWISE MAINTAINING PLANTS UP TO THE CONDITIONAL ACCEPTANCE PERIOD, UNLESS A WRITTEN AGREEMENT WITH THE LANDSCAPE ARCHITECT PROVIDES FOR A DIFFERENT ARRANGEMENT.

ALL LABOR AND MATERIAL FOR SOIL AMENDMENTS AND FERTILIZER THAT IS REQUIRED TO INSURE THE SUCCESSFUL ESTABLISHMENT AND SURVIVAL OF THE PROPOSED VEGETATION, AS WELL AS ALL THE COST FOR THE REMOVAL OF UNSUITABLE OR EXCESS BACKFILL MATERIAL, SHALL BE INCLUDED IN THE CONTRACTORS BID TO PERFORM THE WORK REPRESENTED IN THIS PLAN SET.

2. PLANTING TREES

EXCAVATE PIT AS PER PLANTING DETAILS. COMPACT LAYER OF TOPSOIL IN PIT WITH A SLIGHTLY DISHED GRADE TO CENTER.

BACKFILL AROUND BALL WITH TOPSOIL, AND SLIGHTLY COMPACT, WATER THOROUGHLY AS LAYERS ARE PLACED TO ELIMINATE VOIDS AND AIR POCKETS. BUILD A 6" HIGH BERM OF TOPSOIL BEYOND EDGE OF EXCAVATION. APPLY 3" OF MULCH (AFTER SETTLEMENT) OF MULCH.

PRUNE TREE TO REMOVE DAMAGED BRANCHES, IMPROVE NATURAL SHAPE AND THIN OUT STRUCTURE. DO NOT REMOVE MORE THAN 15% OF BRANCHES. DO NOT PRUNE BACK TERMINAL LEADER.

GUY AND STAKE TREE IN ACCORDANCE WITH THE STAKING DETAILS IMMEDIATELY AFTER PLANTING.

3. PLANTING SHRUBS

LAYOUT SHRUBS TO CREATE A CONTINUOUS SMOOTH FRONT LINE AND FILL IN BEHIND.

EXCAVATE PIT OR TRENCH TO 2 TIMES THE DIAMETER OF THE BALLS OR CONTAINERS OR 1'-0" WIDER THAN THE SPREAD OF ROOTS AND 3" DEEPER THAN REQUIRED FOR POSITIONING AT PROPER HEIGHT. COMPACT A LAYER OF TOPSOIL IN BOTTOM BEFORE PLACING PLANTS. BACKFILL AROUND PLANTS WITH PLANTING MIXTURE, COMPACTED TO ELIMINATE VOIDS AND AIR POCKETS. FORM GRADE SLIGHTLY DISHED AND BERMED AT EDGES OF EXCAVATION. APPLY 3" OF MULCH.

PRUNE SHRUBS TO REMOVE DAMAGED BRANCHES, IMPROVE NATURAL SHAPE AND THIN OUT STRUCTURE. DO NOT REMOVE MORE THAN 15% OF BRANCHES.

4. PLANTING GROUND COVER

LOOSEN SUBGRADE TO DEPTH OF 4" IN AREAS WHERE TOPSOIL HAS BEEN STRIPPED AND SPREAD SMOOTH.

SPACE PLANTS AS OTHERWISE INDICATED. DIG HOLES LARGE ENOUGH TO ALLOW SPREADING OF ROOTS. COMPACT BACKFILL TO ELIMINATE VOIDS AND LEAVE GRADE SLIGHTLY DISHED AT EACH PLANT. WATER THOROUGHLY. APPLY 3" OF MULCH OVER ENTIRE PLANTING BED, LIFTING PLANT FOLiage ABOVE MULCH. PAPER OR QUEEN GROUNDCOVER, IF SPECIFIED, SHALL ONLY RECEIVE 1" OF MULCH.

DURING PERIODS OF HOT SUN AND/OR WIND AT TIME OF PLANTING, PROVIDE PROTECTIVE COVER FOR SEVERAL DAYS OR AS NEEDED.

5. PLANTING LAWNS

SODDING: SOD TYPE SPECIFIED ON PLANT LIST SHALL BE MACHINE STRIPPED NOT MORE THAN 24 HOURS PRIOR TO LAYING.

LOOSEN SUBGRADE TO DEPTH OF 4" AND GRADE WITH TOPSOIL EITHER PROVIDED ON SITE OR IMPORTED TO FINISH DESIGN ELEVATIONS. ROLL PREPARED LAWN SURFACE. WATER THOROUGHLY, BUT DO NOT CREATE MUDDY SOIL CONDITION.

FERTILIZE SOIL AT THE RATE OF APPROXIMATELY 10 LBS. PER 1,000 S.F. SPREAD FERTILIZER OVER THE AREA TO RECEIVE GRASS BY USING AN APPROVED DISTRIBUTION DEVICE CALIBRATED TO DISTRIBUTE THE APPROPRIATE QUANTITY. DO NOT FERTILIZE WHEN WIND VELOCITY EXCEEDS 15 M.P.H. THOROUGHLY MIX FERTILIZER INTO THE TOP 2" OF TOPSOIL.

LAY SOD STRIPS WITH TIGHT JOINTS. DO NOT OVERLAP. STAGGER STRIPS TO OFFSET JOINTS IN ADJACENT COURSES. WORK SIFTED SOIL MIX INTO MINOR CRACKS BETWEEN PIECES OF SOD AND REMOVE EXCESS SOIL DEPOSITED FROM SODDED AREAS. SOD ON SLOPES GREATER THAN 3:1 SHALL BE STAKED IN PLACE. ROLL OR STAMP LIGHTLY AND WATER THOROUGHLY WITH A FINE SPRAY IMMEDIATELY AFTER PLANTING.

6. MISCELLANEOUS LANDSCAPE WORK

LANDSCAPE MAINTENANCE

MAINTAIN LANDSCAPE WORK UNTIL FINAL ACCEPTANCE IS ISSUED BY THE OWNER'S REPRESENTATIVE. INCLUDE WEEDING, CULTIVATING, RESTORATION OF GRADE, MOWING AND TRIMMING GRASS, PRUNING TREES AND SHRUBS, PROTECTION FROM INSECTS AND DISEASES, FERTILIZING AND SIMILAR OPERATIONS AS NEEDED TO INSURE NORMAL GROWTH AND GOOD HEALTH FOR LIVE PLANT MATERIAL.

PLANT MATERIAL SUBSTITUTION

NO SUBSTITUTION OF PLANT MATERIAL, TYPE OR SIZES WILL BE PERMITTED WITHOUT AUTHORIZATION FROM THE LANDSCAPE ARCHITECT.

PLANTING BED PREPARATION

ALL PLANTING BEDS SHALL BE PROPERLY PREPARED PRIOR TO THE COMMENCEMENT OF ANY PLANTING. PLANTING AREAS, INCLUDING LAWNS SHALL BE FREE OF ALL WEEDS AND NUISANCE VEGETATION. IF TONNED GRASS (PAVING) IS PROVIDED PRIOR TO PLANTING, THE CONTRACTOR SHALL STOP ALL PLANTING UNTIL IT CAN BE DEMONSTRATED THAT IT HAS BEEN COMPLETELY REMOVED OR ERADICATED. THERE SHALL BE NO EXCEPTIONS TO THIS PROVISION.

ALL LANDSCAPE ISLANDS AND BEDS WILL BE FREE OF SLEET ROCK AND CONSTRUCTION DEBRIS AND WILL BE EXCAVATED TO A DEPTH OF 30 INCHES OR TO CLEAN, NATIVE SOIL, AND FILLED WITH THE SPECIFIED BACKFILL MIXTURE.

PLANTING DETAILS

