

**CONCEPTUAL TRAFFIC CALMING
AND COST ESTIMATES REPORT**

**SOUTHBEND BOULEVARD
AND WESTMORELAND BOULEVARD**

Project No. 1813.4

PORT ST LUCIE, FLORIDA

Prepared for:



THE CITY OF PORT ST LUCIE

By



Civil Engineering Professionals

Engineering Business No. EB-0007657

**CAPTEC ENGINEERING, INC.
301 NW FLAGLER AVENUE
STUART, FLORIDA 34994
(772) 692-4344 OFFICE
(772) 692-4341 FAX**

October 8, 2019

**JOSEPH W. CAPRA, P.E.
FLORIDA P.E. # 37638**



Conceptual Traffic Calming



Introduction

CAPTEC Engineering was awarded the conceptual design-work for traffic calming along a segment of Southbend Boulevard and Westmoreland Boulevard. The proposed traffic calming devices and configuration have been uniquely selected and laid out specifically to each location.

Southbend Boulevard

The total length of the Southbend traffic calmed area is 3.90 miles stretching from the boat ramps near Eagle Drive all the way south to Becker Road. The following is a list of the selected traffic calming items and what is included:

- Intersection Artwork
 - To be coordinated with the NICE program
 - Total quantity: 2 locations
- Flashing Traffic Calmed Area Signage
 - LED flashing signage
 - Total quantity: 6
- Raised Crosswalk at Jessica Clinton Park
 - Asphalt 3 inches max height
 - Includes striping
 - Existing push-button crosswalk system to be re-used / adjusted
- Landscape Pods
 - Trees to be 4 feet off face of curb per FDOT lateral clearance
 - Medium size palm trees and Fakahatchee grass suggested
 - Includes edging and mulch
 - Irrigation not included
 - Total quantity: 10
- Thermoplastic Striping
 - 6 inch white outside lines
 - 6 inch double yellow middle lines
 - 3.90 miles total length of route

Cost Estimate

	Item	Qty	Unit	Unit Cost	Total
1	Intersection Artwork "NICE project"	2	EA	\$ 8,000	\$ 16,000
2	Flashing Traffic Calmed Area Signage	6	EA	\$ 2,400	\$ 14,400
3	Raised Crosswalk	1	EA	\$ 12,000	\$ 12,000
4	Landscape Pods	10	EA	\$ 2,500	\$ 25,000
5	Thermoplastic Striping	16	GM	\$ 6,600	\$ 105,600
6	VMS Boards Temporary Awareness	4	EA	\$ 1,200	\$ 4,800
	Total				\$ 177,800

Please refer to the overall Southbend Conceptual Traffic Calming Exhibit.

Conceptual Traffic Calming

Westmoreland Boulevard

The total length of the Westmoreland traffic calmed area is 2.45 miles stretching from the Bakersfield Street Roundabout heading west all the way to the entrance to the Anchorage Subdivision at Palm Beach Road. The following is a list of the selected traffic calming items and what is included:

- Green Bike Lane Markings
 - Epoxy resin green and Bike Marking
 - Total quantity: 16 locations
- Flashing Traffic Calmed Area Signage
 - LED flashing signage
 - Total quantity: 2
- Standard Traffic Calmed Area Signage
 - Near the intersection of Pine Valley St
 - Total quantity: 2
- Upgrade Existing Chicanes
 - Includes high performance white delineators
 - Includes white and yellow thermoplastic striping
 - Total quantity: 4

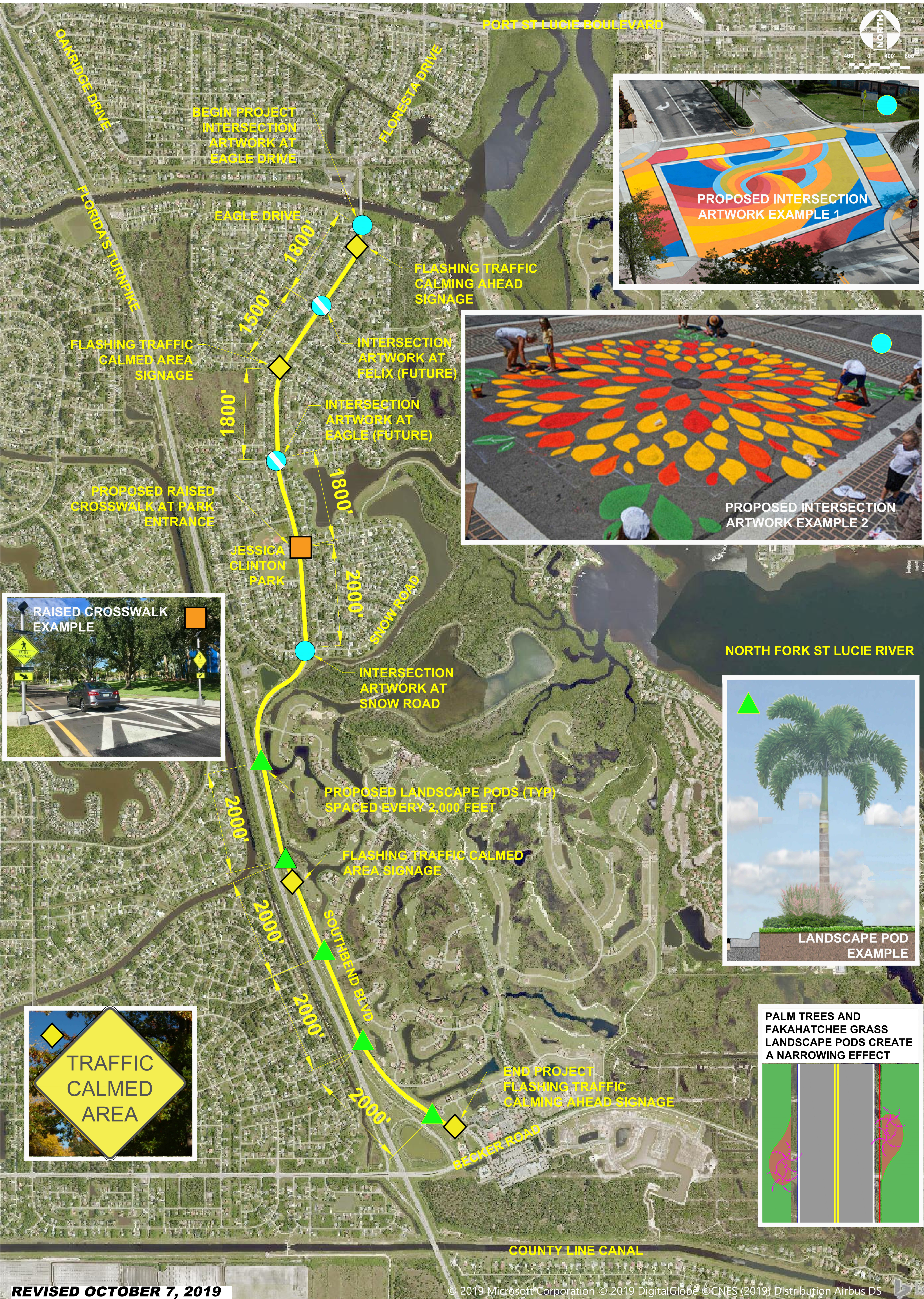
Cost Estimate

	Item	Qty	Unit	Unit Cost	Total
1	Green Bike Lane Markings Epoxy resin	16	EA	\$ 4,000	\$ 64,000
2	Flashing Traffic Calmed Area Signage	2	EA	\$ 2,400	\$ 4,800
3	Standard Traffic Calmed Area Signage	2	EA	\$ 400	\$ 800
4	Upgrade Existing Chicanes	4	EA	\$ 4,000	\$ 16,000
	Total				\$ 85,600

Please refer to the overall Westmoreland Conceptual Traffic Calming Exhibit.

Conclusion

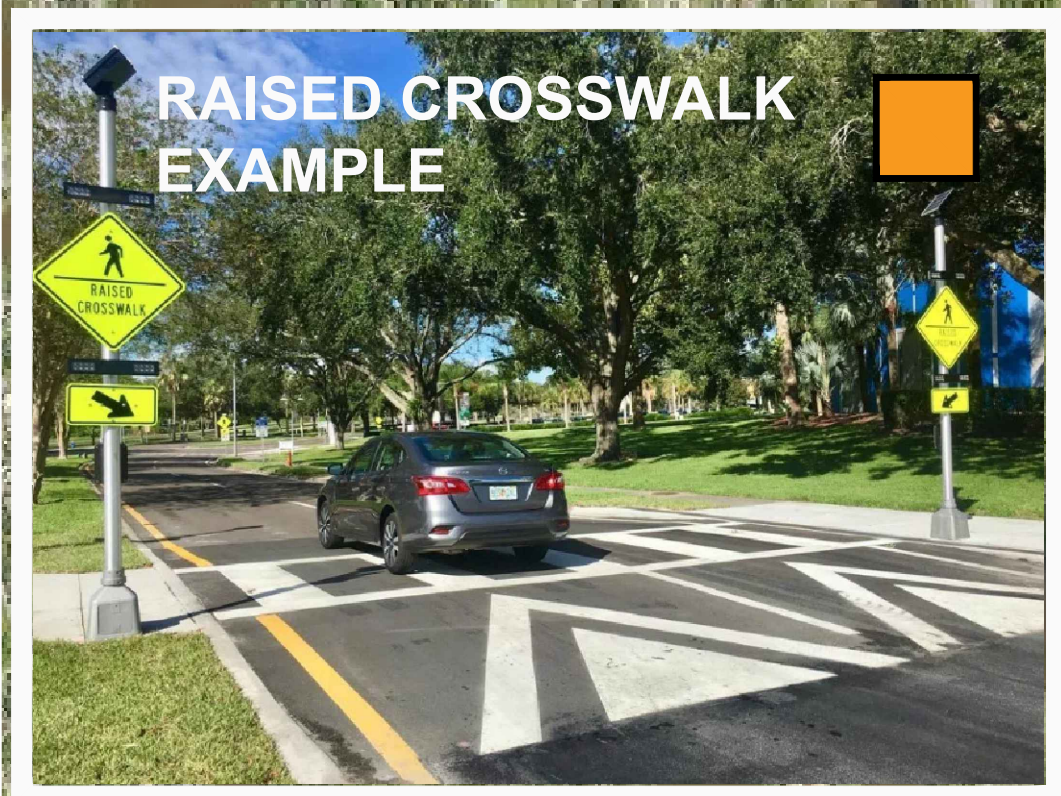
The conceptual traffic calming designs along Southbend Boulevard and Westmoreland Boulevard have been spaced and chosen with the expectation to control the speed of traffic with unique items. It is recommended to conduct a traffic volume and speed analysis six months after the final installation of the devices.



PROPOSED INTERSECTION ARTWORK EXAMPLE 1



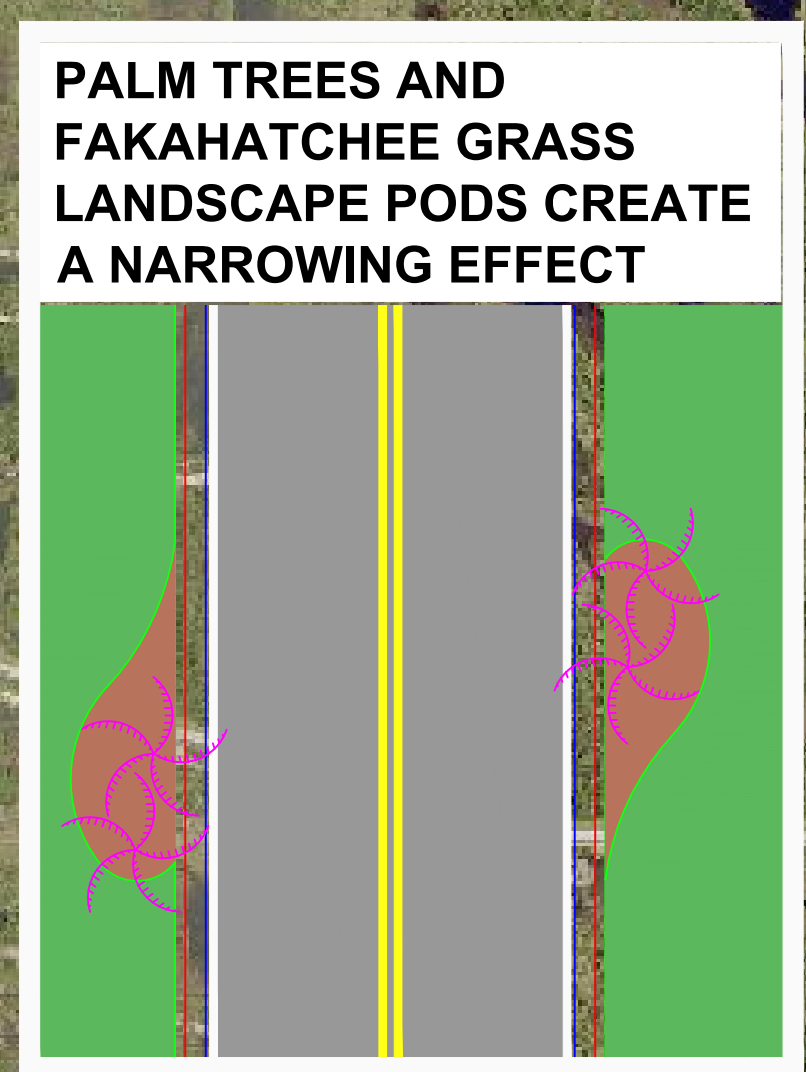
PROPOSED INTERSECTION ARTWORK EXAMPLE 2



RAISED CROSSWALK EXAMPLE



LANDSCAPE POD EXAMPLE



PALM TREES AND FAKAHATCHEE GRASS LANDSCAPE PODS CREATE A NARROWING EFFECT

REVISED OCTOBER 7, 2019

© 2019 Microsoft Corporation © 2019 DigitalGlobe © CNES (2019) Distribution Airbus DS



CITY OF PORT ST LUCIE SOUTHBEND BOULEVARD CONCEPTUAL TRAFFIC CALMING EXHIBIT





CITY OF PORT ST LUCIE
WESTMORELAND BOULEVARD
CONCEPTUAL TRAFFIC CALMING EXHIBIT

