

PLANT SCHEDULE

SYMBOL	CODE	QTY	BOTANICAL NAME	COMMON NAME	CONTAINER	HEIGHT	WIDTH	NOTES	NATIVE	CALIPER
TREES										
	ELF	7	Elaeocarpus decipiens	Japanese Blueberry Tree	25G	6'HT	4'W	2' CT, STD. F. SP	Non-native	2" Caliper
	IAE	5	Ilex x attenuata 'Eagleston'	Eagleston Holly	45G	14' HT	5'W	SP, 5' CT	Native	2.5" Caliper
	LMM	10	Lagerstroemia indica 'Muskogee'	Muskogee Crape Myrtle	45G	12' HT	6' SPR	ML SP	Non-native	2.5" Caliper
	MB	4	Magnolia grandiflora 'D.D. Blanchard'	D.D Blanchard Southern Magnolia	45G	14' HT	5'W	FTB, SP	Native	2.5" Caliper
	QV	14	Quercus virginiana	Southern Live Oak	45G	14' HT	6'W	F, SP, 8' CT	Native	2.5" Caliper
EXISTING TREES TO REMAIN										
	QUV	1	Quercus virginiana	Southern Live Oak	Existing to Remain	25' HT	20' W		Native	16" DBH
PALM TREES										
	CP	26	Sabal palmetto	Sabal Palm	FG	10'-18' CT		SLK, HC, SP	Native	
SYMBOL CODE QTY BOTANICAL NAME COMMON NAME CONTAINER HEIGHT WIDTH NOTES NATIVE										
SHRUBS										
	ALI	4	Alcantarea imperialis	Imperial Bromeliad	CG	24" OA	18"W	F	Non-native	
	CHM	230	Chrysobalanus icaco 'Red Tip'	Red Tip Coccolupum	CG	24" HT	24"W	F, SP	Native	
	CLL	144	Clusia guttifera	Small-Leaf Clusia	CG	24" HT	3'W	F	Non-native	
	HCA	101	Hamelia patens 'Compacta'	Dwarf Firebush	CG	24" HT	18"W	F	Non-native	
	MFF	70	Myrcianthes fragrans	Simpson's Stopper	CG	24" HT	24"W	F	Native	
	PLU	37	Plumbago auriculata 'Imperial Blue'	Plumbago	CG	24" HT	18"W	F	Non-native	
	RON	20	Rondeletia leucophylla	Panama Rose	CG	24" HT	24"W	F	Non-native	
	SRS	21	Serenoa repens 'Cinerea'	Silver Saw Palmetto	CG	24" HT	18"W	F	Native	
	TF	79	Tripsacum dactyloides	Fakahatchee Grass	CG	24" HT	18"W	F	Native	
SYMBOL CODE QTY BOTANICAL NAME COMMON NAME CONTAINER HEIGHT WIDTH NOTES NATIVE										
GROUND COVERS										
	EB	93	Evolvulus glomeratus 'Blue Daze'	Blue Daze	CG	12"HT	12"W	F	Non-native	
	SOD	TBD	Stenotaphrum secundatum 'Floratum'	Floratum St. Augustine Sod	SOD				Free of Weeds and Pests	

Overall Site Data:

Total Site Area: 50,981 sf. (1.17 Ac.)
 Zoning: CG
 Existing Use: Vacant

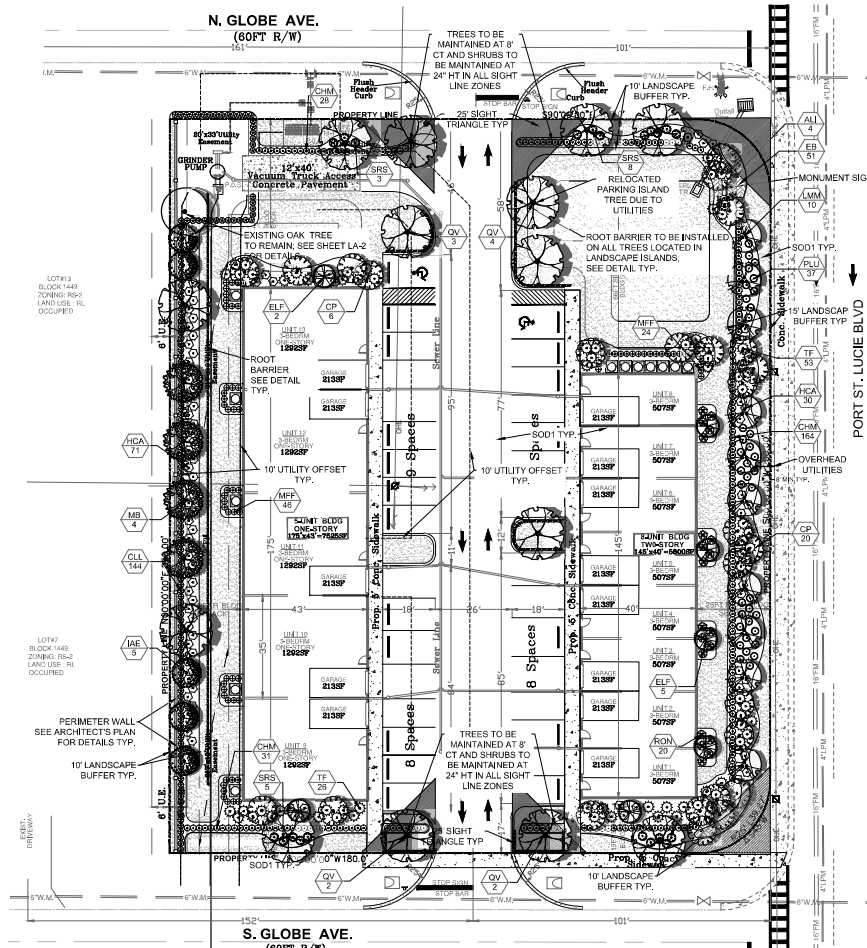
Required Trees:	Native%	# of Species	Flowering%	Drought Tolerant%	*Palm%
Perimeter: (888/30)	30	50%=15			
Building(s) Foundation Perimeter: (Units 1-8: 228/30)	8	50%=9			
(Units 9-13: 266/30)	9				
Parking Islands: (6)	6	75%=5			*Building Facade is exempt from this requirement
Total:	53	29	5	20%=11	50%=27
*25%=29 (Max)					

Provided Trees:	Native	# of Species	Flowering	Drought Tolerant	Palm
Total:	53	41	6	14	41

Required Shrubs:	Native%	Drought Tolerant%	
Perimeter: (888/2)	444	25%=111	50%=222
Building(s) Foundation Perimeter: (Units 1-8: 228/2)	114	25%=62	50%=124
(Units 9-13: 266/2)	133		
Total:	691	173	346

Provided Shrubs:	Native	Drought Tolerant	
Total:	702	400	400

Index of Drawings
 Landscape Plan LA-1
 Tree Disposition Plan LA-2
 Details & Specifications LA-3



PSLUSD Notes for Landscape Plan

- No landscaping shall be planted in a manner that would adversely affect utility easements. Landscaping shall be in compliance with Chapter 154 of the City of Port Saint Lucie Code of Ordinances, PSLUSD technical specifications and policies.
- All landscaping within City utility easements shall comply with PSLUSD technical specifications, policies, and codes.
- All landscaping shall meet the latest PSLUSD Landscape Policy and shall not be placed in a manner that would create conflicts with the intended operation and maintenance of any existing utility.
- Trees shall not be planted within ten (10) feet of any PSLUSD underground infrastructure.
- No landscaping other than sod grasses shall be located within 5' of a PSLUSD appurtenance such as a water meter assembly, backflow device, fire hydrant, or sewer cleanout, etc.

General Landscape Notes

- At least 50% of all required trees shall be of a native species.
- All plant material to be Florida No. 1 or better.
- All landscape & sod areas to be irrigated by an automated system that provides 100% coverage with 100% overlap with a minimum d.u. of .70.
- All landscaping at intersection and corners complies with Section 158.204 of the Port St Lucie Code of Ordinances to provide a clear sight zone between 2' - 6' above the final road crown elevation. All hedges and shrubs within the 25' sight triangle will be maintained at a height no higher than 2' above the crown elevation of the road. In addition, the foliage line any tree within the 25' sight triangle will be maintained at a height of no less than 6' above the road crown.

Project Team
 Landscape Architect

 LANDSCAPE ARCHITECTURAL SERVICES, LLC
 1708 SE Jay Haven Street
 Port St. Lucie, FL 34983
 (772) 631-9000 | Paul@lgs-arc.com
 Civil Engineer

 ABRAHAM CHABAB, P.E.
 7,700 S. PORT ST. LUCIE BLVD. SUITE 200
 PORT ST. LUCIE, FL 34983
 Email: a.chabab@pslusa.com
 Tel: 772-372-8755

Globe Town Homes
 913 S. SW Globe Avenue
 City of Port Saint Lucie, Florida
 Landscape Plan
 P24-117

Revisions		
Date	Init.	Description
6.17.24	PG	1st Submittal
10.02.24	PG	Submittal

PAUL GOULAS, RLA
 FLORIDA REG. # LA6668607

Drawn By: PG
 Checked By: PG
 Municipal Project:
 Scale:

 SCALE: 1" = 20'
 0 10' 20' 40'
LA-1

Know what's below. Call before you dig.
 Digitally signed by Paul A. Goulas
 Date: 2024.10.01 20:53:38 -0407
 Adobe Acrobat version 2024.003.20112

NOTE: TREE DIAMETER MEASURED AT BREAST HEIGHT

TREE NUMBER	TYPE OF TREE	DIAMETER IN INCHES	TREE NUMBER	TYPE OF TREE	DIAMETER IN INCHES
T-1	PINE	5"	T-56	OAK	8"
T-2	PINE	10"	T-57	*PINE	12"
T-3	*PINE	19"	T-58	PINE	7"
T-4	PINE	7"	T-59	PINE	6"
T-5	*** OAK	12"	T-60	PINE	10"
T-6	** OAK	15"	T-61	PINE	10"
T-7	PINE	6"	T-62	PINE	10"
T-8	PINE	7"	T-63	PINE	9"
T-9	PINE	9"	T-64	OAK	10"
T-10	PINE	11"	T-65	OAK	6"
T-11	PINE	10"	T-66	PINE	11"
T-12	*PINE	13"	T-67	*PINE	12"
T-13	*PINE	12"	T-68	OAK	6"
T-14	OAK	6"	T-69	*PINE	13"
T-15	PINE	8"	T-70	PINE	9"
T-16	PINE	10"	T-71	*PINE	12"
T-17	*PINE	12"	T-72	*PINE	12"
T-18	PINE	7"	T-73	PINE	8"
T-19	PALM	18"	T-74	*PINE	15"
T-20	PALM	18"	T-75	PINE	9"
T-21	PALM	18"	T-76	*PINE	14"
T-22	PALM	18"	T-77	PINE	8"
T-23	PALM	16"	T-78	OAK	6"
T-24	PALM	16"	T-79	PINE	9"
T-25	PALM	16"	T-80	PINE	11"
T-26	*PINE	12"	T-81	PINE	6"
T-27	PALM	16"	T-82	*PINE	15"
T-28	PALM	12"	T-83	PINE	9"
T-29	*PINE	13"	T-84	PINE	10"
T-30	PINE	11"	T-85	*PINE	18"
T-31	PINE	8"	T-86	*PINE	16"
T-32	*PINE	13"	T-87	PALM	18"
T-33	PALM	12"	T-88	PALM	15"
T-34	PALM	13"	T-89	PALM	18"
T-35	OAK	9"	T-90	PINE	11"
T-36	*PINE	14"	T-91	PALM	18"
T-37	PINE	8"	T-92	PINE	10"
T-38	PINE	11"	T-93	PALM	18"
T-39	PINE	8"	T-94	PALM	18"
T-40	PINE	7"	T-95	*PINE	14"
T-41	*PINE	12"	T-96	PALM	20"
T-42	PINE	6"	T-97	PALM	15"
T-43	OAK	6"	T-98	PALM	12"
T-44	PALM	18"	T-99	*PINE	20"
T-45	PINE	10"	T-100	PALM	15"
T-46	PINE	10"	T-101	*PINE	12"
T-47	PALM	12"	T-102	*PINE	18"
T-48	*PINE	18"	T-103	PINE	9"
T-49	*PINE	21"	T-104	*PINE	12"
T-50	PINE	8"	T-105	PINE	6"
T-51	PINE	8"	T-106	PINE	9"
T-52	PINE	11"	T-107	PINE	9"
T-53	*PINE	12"	T-108	PINE	11"
T-54	PINE	10"	T-109	PINE	7"
T-55	PINE	10"	T-110	OAK	10"

*386" DBH TOTAL PINES REMOVED REQUIRING MITIGATION; MITIGATION TO BE MET BY FEE TBD

**15" DBH TOTAL OAKS REMOVED REQUIRING MITIGATION; MITIGATION TO BE MET BY PRESERVING (1)12" DBH OAK & FEE TBD (3" DEFICIT)

***12" DBH OAK TO BE PRESERVED; SEE TREE PROTECTION DETAIL

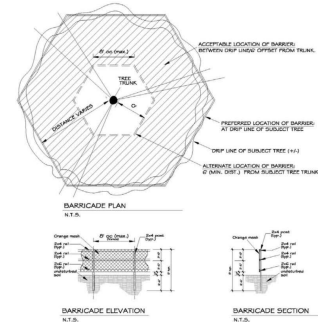


EXISTING TREE SURVEY PROVIDED BY:

ROLAND E. ROLLINS
PROFESSIONAL LAND SURVEYOR
 3221 SW CRUMPACKER STREET
 PORT ST. LUCIE, FLORIDA 34953
 772-873-4700

EXISTING TREE SCHEDULE KEY:

OAK: *Quercus species*
PINE: *Pinus elliptica*
PALM: *Sabal palmetto*



- BARRICADE ELEVATION**
 N.T.S.
- BARRICADE SECTION**
 N.T.S.
- BARRICADE NOTES:**
1. TREE PROTECTION BARRICADE TO BE ESCORTED FROM TO COMMENCEMENT OF ANY WORK.
 2. NO CONSTRUCTION WITHIN BARRICADE WITHOUT OWNER APPROVAL.
 3. EXCAVATION IS APPROVED BY OWNER WITHIN TREE PROTECTION AREA IS LIMITED TO HAND TOOLS (NO MACHINERY).

TREE PROTECTION DETAIL
 NOT TO SCALE

Project Team
 Landscape Architect
LA6
 LANDSCAPE ARCHITECTURAL SERVICES, LLC
 1708 SE Jay Haven Street
 Port St. Lucie, FL 34983
 (772) 631-9400 | Paul@las-arc.com
 Civil Engineer
 ABRAHAM CHABARON
 ABRAHAM CHABARON, P.E.
 1708 SE Jay Haven Street
 Port St. Lucie, FL 34983
 (772) 631-9400 | Paul@las-arc.com

Globe Town Homes
 913 S. SW Globe Avenue
 City of Port Saint Lucie, Florida
Tree Disposition Plan
 P24-117

Revisions

Date	Init.	Description
6.17.24	PG	1st Submittal
10.02.24	PG	Submittal

PAUL GOULAS, RLA
 FLORIDA REG. # LA6668807

Drawn By: PG
 Checked By: PG
 Municipal Project:
 Scale:

NORTH

SCALE: 1" = 20'

0 10' 20' 40'

LA-2

